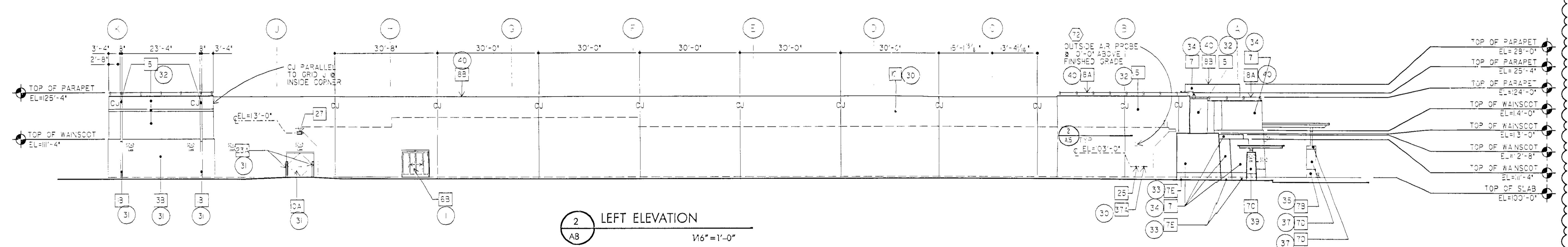
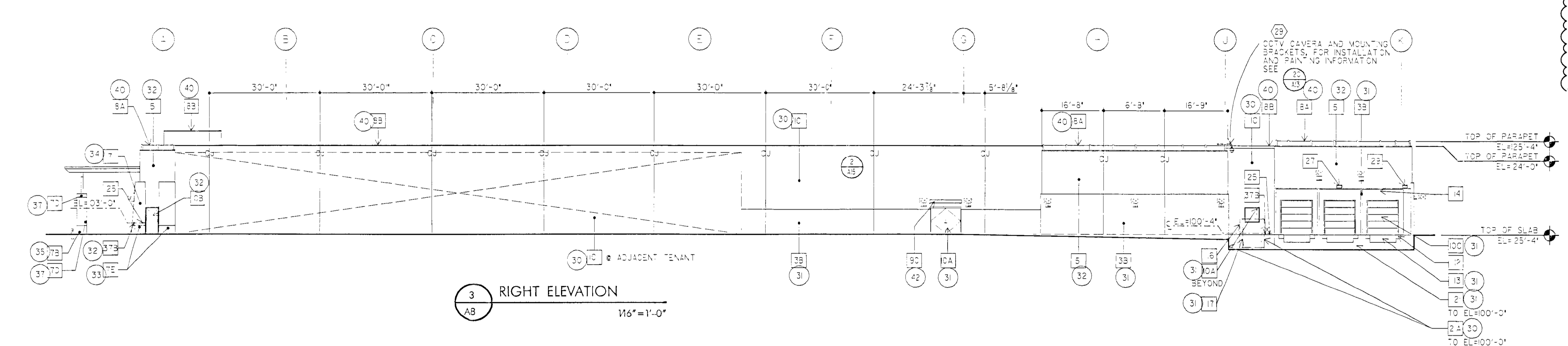


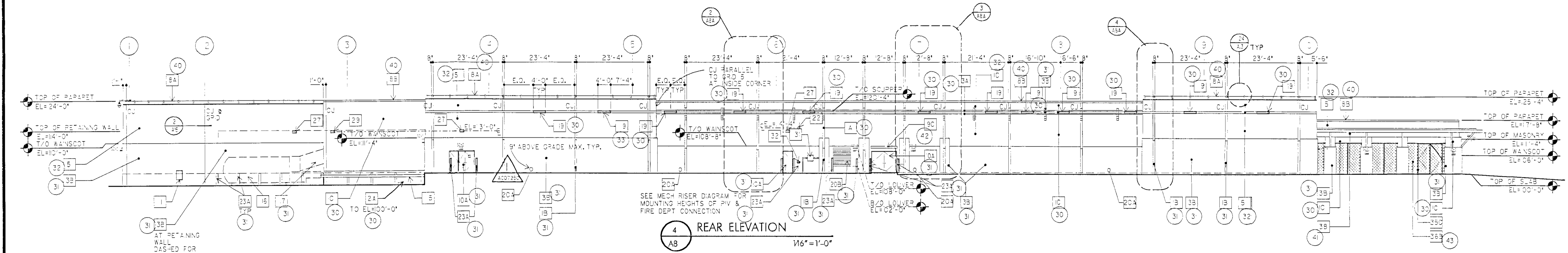
1 FRONT ELEVATION
1/6" = 1'-0"



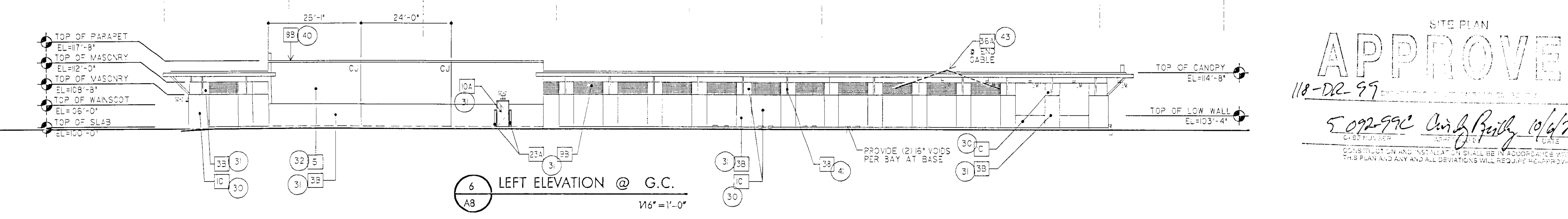
2 LEFT ELEVATION
1/6" = 1'-0"



3 RIGHT ELEVATION
1/6" = 1'-0"



4 REAR ELEVATION
1/6" = 1'-0"



6 LEFT ELEVATION @ G.C.
1/6" = 1'-0"

KEYNOTES (REFERENCE SQUARES)			
KEYNOTE	BASE MATERIAL	FINISH	COLOR
1	CMU-2 (SMOOTH)	EPS-6	C-30
2	CMU-2 (SMOOTH)	EPS-6	C-31
3	CMU-2 (SMOOTH)	EPS-6	C-32
4	CMU-2 (SMOOTH)	EPS-6	C-33
5	NOT USED		
6	CMU-3 (SPLIT FACE)	EPS-6	C-30
7	CMU-3 (SPLIT FACE)	EPS-6	C-31
8	CMU-3 (SPLIT FACE)	EPS-6	C-32
9	CMU-3 (SPLIT FACE)	EPS-6	C-33
10	EXT. SERV. PANEL SYS.	EPS-4	C-30
11	STOPEFRONT	PREFIN	C-38
12	STOPEFRONT	PREFIN	C-39
13	SS-1		C-34
14	SS-1		C-35
15	SS-1		C-36
16	SS-1		C-37
17	RUBBLE STONE		C-38
18	SS-		C-37
19	SS-		C-38
20	Metal Coring	PREFIN	C-40
21	Metal Coring	PREFIN	C-41
22	NOT USED		
23	NOT USED		
24	Metal Downspout	EPS-1	C-40
25	Metal Screen	PREFIN	C-38
26	Metal Screen	PREFIN	C-39
27	Metal Canopy	PREFIN	C-42
28	HV Door & Frame	EPS-1	C-31
29	HV Door & Frame	EPS-1	C-32
30	CH Door	EPS-2	C-31
31	NOT USED		
32	LOCK BOX	PREFIN	
33	DOCK BUMPER	PREFIN	
34	DOCK BUMPER	EPS-1	C-31
35	DOCK SEAL	PREFIN	
36	GUARD RAIL	DALV	
37	CONTR. CONTAINER	PREFIN	
38	DOOR CHUTE ENCL.	EPS-1	C-31
39	RTJ		
40	SOLPPER	EPS-1	C-30
41	ROOF DRAIN OUTLET		
42	Metal Louver	EPS-1	C-31
43	POURED CONG.	EPS-1	C-31
44	POURED CONG.	EPS-1	C-32
45	ALARM BELL	PREFIN	
46	BOLLARD	EPS-1	C-31
47	BOLLARD	EPS-1	C-32
48	CONC CURB		
49	WALL MOUNT	PREFIN	
50	INDICATOR VALVE	PREFIN	
51	SECURITY LIGHTS	PREFIN	
52	TARGET SIGN	PREFIN	C-1
53	NOT USED		
54	G.C. SIGN	PREFIN	C-1
55	MOTION ACTIV. LIGHT		
56	NOT USED		
57	GAS METER		
58	FIRE DEPT. CONNECT		
59	CO. FIL. BOX		
60	GAS PIPING	EPS-1	C-31
61	FENCE TYPE 1	EPS-1	C-38
62	FENCE TYPE 2	DALV	
63	FENCE TYPE 3	DALV	
64	FAB SCR TYPE 1	PREFIN	C-43
65	FAB SCR TYPE 2	PREFIN	C-43
66	FIRE INSP. TEST	EPS-1	C-32
67	HEAVY MEMBER	EPS-1	C-41

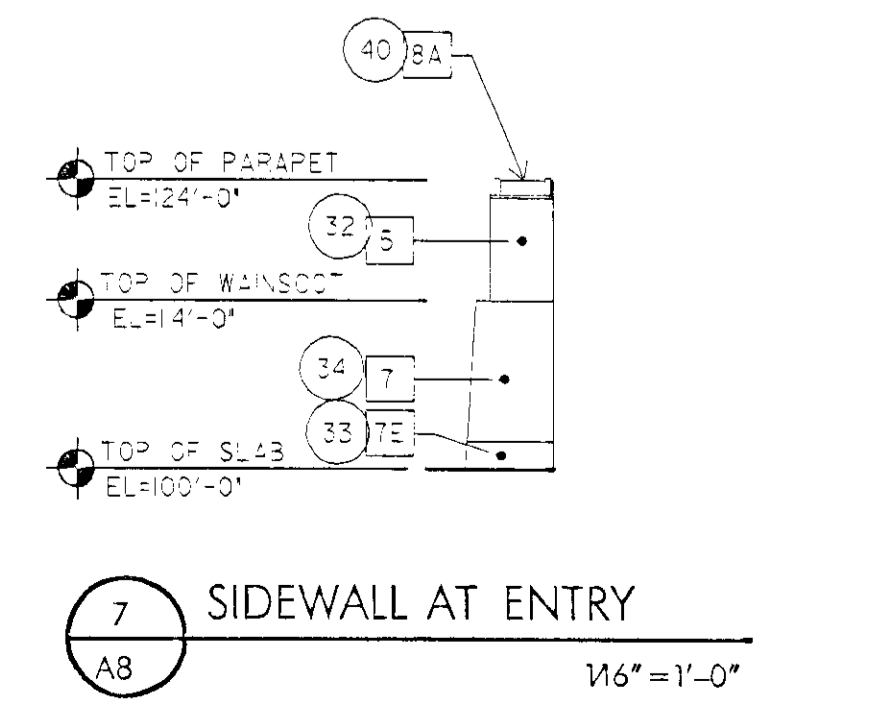
GENERAL NOTES CMU

- SEE A.C. FINISH MATERIAL & COLOR KEY FOR EXTERIOR COLOR AND PA-S SYSTEMS.
- FOR TYPICAL CONTROL JUNT DETAILS SEE 1, 2, 3, 4, 5, 6.
- PROVIDE MINIMUM 300' WATERPROOF MEMBRANE AT ALL WALLS WITHIN 10' OF FINISH.
- FOR CMU FOUNDATION WALLS, EXTEND WALL 1' TO 1/2' FOOTINGS.
- SEE SHEET A8A FOR ADDITIONAL INFORMATION.

COLOR KEY (REFERENCE CIRCLES)	
RED	C-1
DARK BUFF- 2K	C-30
DARK BUFF- 4K	C-31
CAVELOCA*	C-32
PALO VERDE	C-33
SANDSTONE BLEND	C-34
ROSA	C-35
ARIZONA SUNSET	C-36
SUNSET	C-37
MANORHOUSE	C-38
MARYLAND COBBLE DC	C-39
GALVA*QUE	C-40
NATURAL CEDAR	C-41
CLEAR COATED S*SEL	C-42
SPICED SAND	C-43

LIGHTING KEY	
SYMBOL	SHEET #
SM	A8A
SK	AL 02
SC-1	AL 03
SC-2	AL 03
CA	AL 03

SITE PLAN
APPROVED
118-DR-99
5092-99C
10/1/2001



7 SIDEWALL AT ENTRY
1/6" = 1'-0"

5 NOT USED
A8

TARGET
A DIVISION OF TARGET CORPORATION

RSP+SLL
RSP Architects, Ltd.
Sutter Leach & Linsington, Inc.
120 First Avenue North

TEMP
10/1/2001

DATE ISSUED	28 MARCH 2000
DATE REV.	03/20/00
DATE REV.	03/20/00
DATE REV.	03/20/00
DATE REV.	03/20/00

PROJECT: T-1327 P2001
DRAWING: EXTERIOR ELEVATIONS

FAR NORTH SCOTTSDALE
EXTERIOR ELEVATIONS

A8