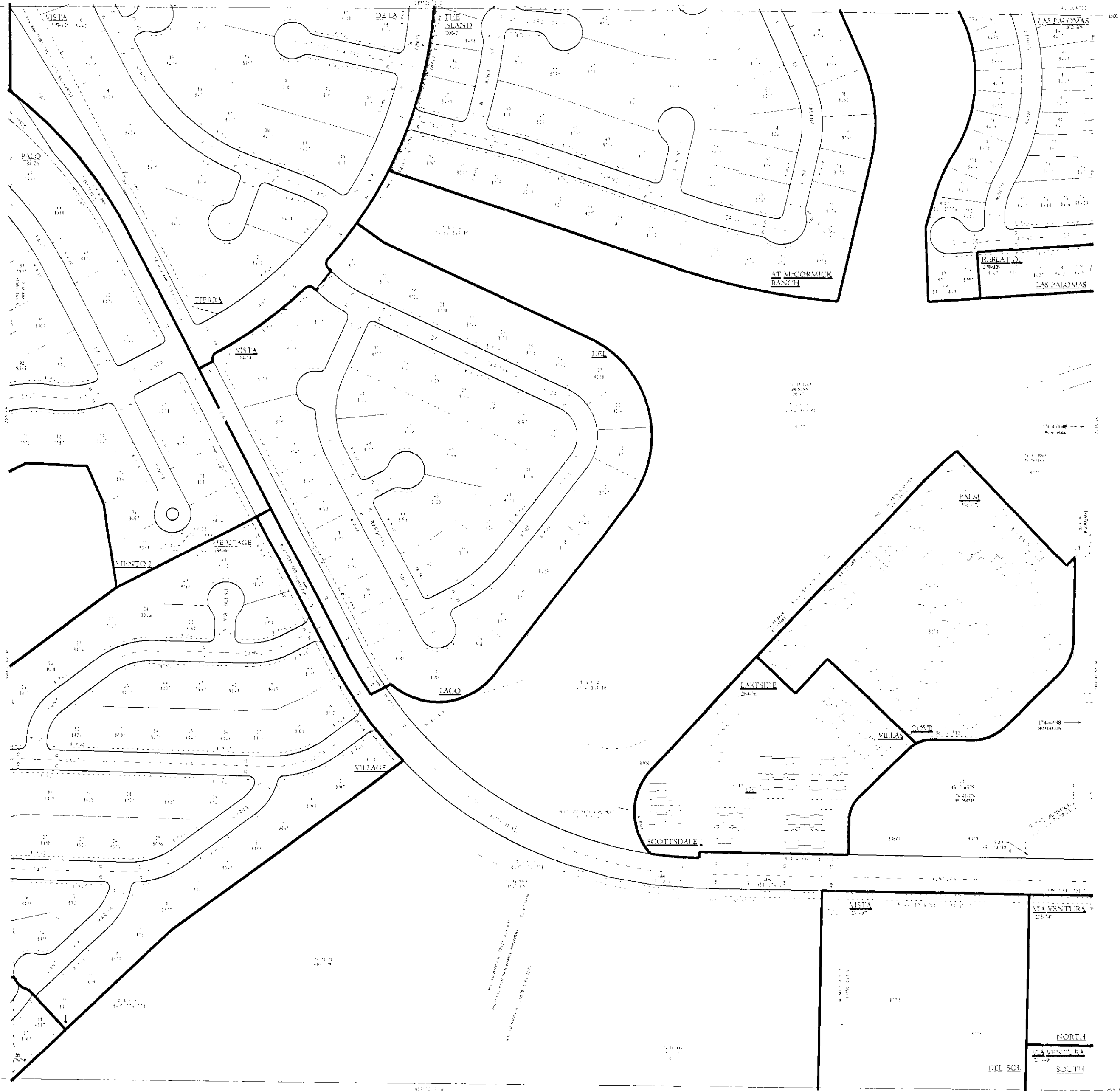


GENERAL NOTES

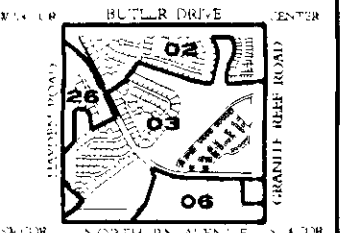
- 1. THIS MAP IS A REPRODUCTION OF THE ORIGINAL RECORD MAP AS FILED IN THE PUBLIC RECORDS OFFICE OF THE COUNTY OF MARICOPA, ARIZONA.
- 2. THE DISTANCES AND BEARINGS SHOWN ON THIS MAP ARE BASED ON THE ASSUMPTION THAT THE EARTH IS A FLAT PLANE AND THAT THE CURVATURE OF THE EARTH IS NEGLIGIBLE.
- 3. THE DISTANCES AND BEARINGS SHOWN ON THIS MAP ARE BASED ON THE ASSUMPTION THAT THE EARTH IS A FLAT PLANE AND THAT THE CURVATURE OF THE EARTH IS NEGLIGIBLE.
- 4. THE DISTANCES AND BEARINGS SHOWN ON THIS MAP ARE BASED ON THE ASSUMPTION THAT THE EARTH IS A FLAT PLANE AND THAT THE CURVATURE OF THE EARTH IS NEGLIGIBLE.

NOTES:

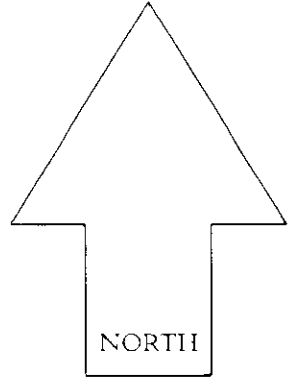


25-48

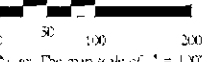
VICINITY MAP



Book 174



SCALE 1" = 100'



The map scale of 1" = 100' is based on a datum of NAD 83.

LAND
 QUARTER SECTION MAP
25-47
 SW 1/4 SEC 36 T3N R4E

SCOTTSDALE GEOGRAPHIC INFORMATION SYSTEMS
 3425 North Drexel Avenue, Boulevard
 Scottsdale, Arizona 85251

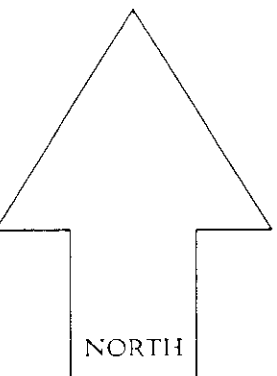
N O T I C E
 THE CITY OF SCOTTSDALE
 2004

GENERAL NOTES
1. THIS MAP IS A COMPUTER GENERATED DRAWING FOR INFORMATIONAL PURPOSES ONLY. IT IS NOT A LEGAL INSTRUMENT. THE CITY OF SCOTTSDALE RESERVES THE RIGHT TO REVISIONS AT ANY TIME.
2. THE CITY OF SCOTTSDALE DOES NOT WARRANT THE ACCURACY OF THE INFORMATION PROVIDED ON THIS MAP. THE CITY OF SCOTTSDALE DOES NOT WARRANT THE ACCURACY OF THE INFORMATION PROVIDED ON THIS MAP.

NOTES:

VICINITY MAP

Book 174



SCALE: 1" = 100'

Note: This map scale of 1" = 100' is based on a 1/4" x 1/4" print of 30" x 42"

LAND
QUARTER SECTION MAP
25-48
SE 1/4 SEC. 36 T33N R4E

SCOTTSDALE GEOGRAPHIC INFORMATION SYSTEMS
3629 North Derringer Boulevard
Scottsdale, Arizona 85251

THE CITY OF SCOTTSDALE
THIS DRAWING IS PROVIDED FOR INFORMATIONAL PURPOSES ONLY. THE CITY OF SCOTTSDALE DOES NOT WARRANT THE ACCURACY OF THE INFORMATION PROVIDED ON THIS MAP. THE CITY OF SCOTTSDALE DOES NOT WARRANT THE ACCURACY OF THE INFORMATION PROVIDED ON THIS MAP.

25-47

