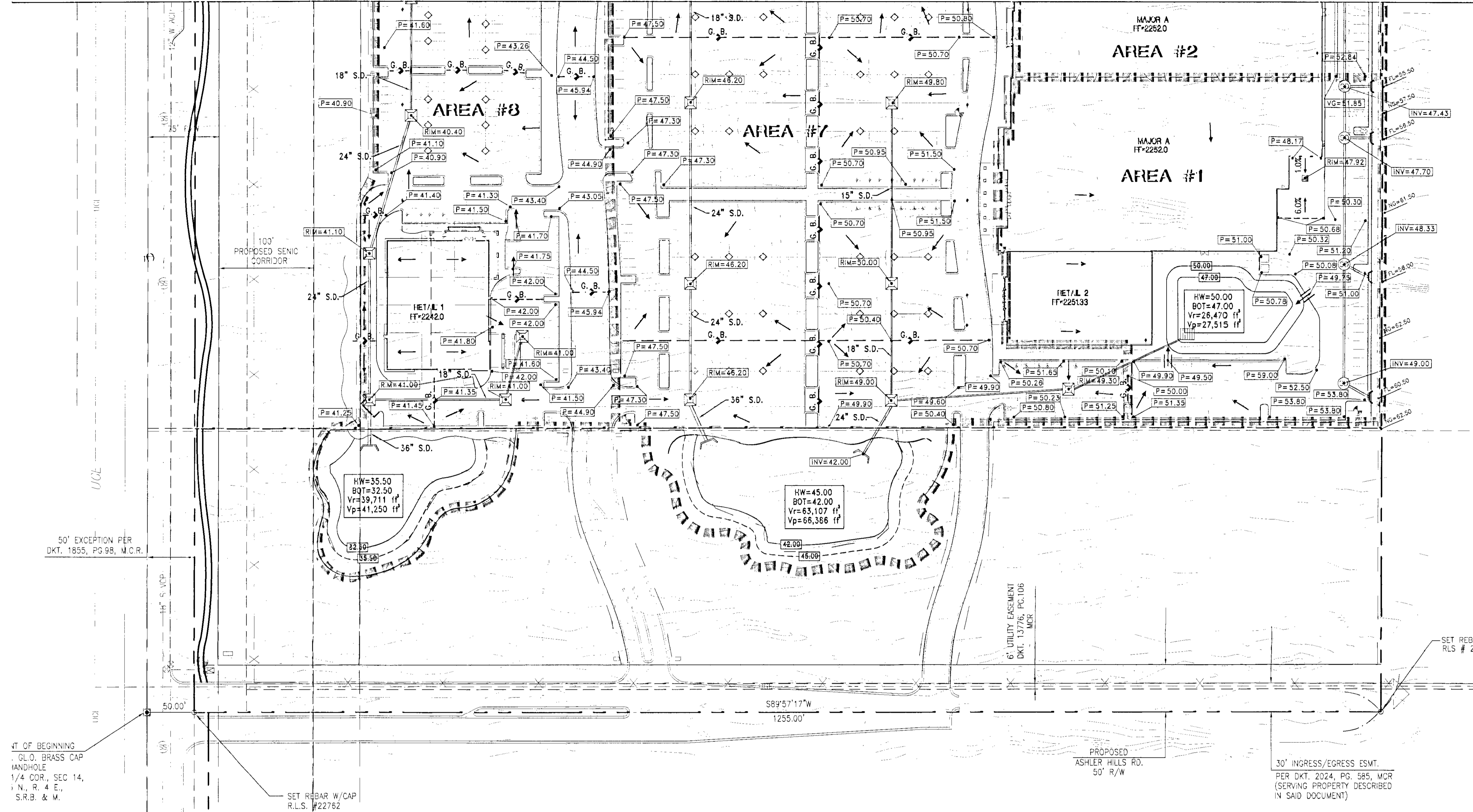


MATCHLINE - SEE SHEET 1 OF 2



DEI
 PROFESSIONAL SERVICES, L.L.C.
 7000 N. 10th Street, Suite 200
 Phoenix, Arizona 85020
 Phone: (602) 924-0033
 Fax: (602) 924-0034
 1982-1999
17
 YEARS OF
 EXCELLENCE
 DEI Professional
 Services, L.L.C.

SUMMIT AT SCOTTSDALE
 SCOTTSDALE, ARIZONA
 CONCEPTUAL GRADING AND DRAINAGE PLAN

RETENTION CALCULATIONS

Volume Required = $\frac{D}{12} CA$
 D = 2.82 inch
 C = 0.84
 A = Area, Acres

Volume Provided=

AREA #1	AREA #2	AREA #3	AREA #4	AREA #5	AREA #6	AREA #7	AREA #8
A=134,091 ft ²	A=124,698 ft ²	A=82,683 ft ²	A=82,304 ft ²	A=272,874 ft ²	A=248,031 ft ²	A=319,693 ft ²	A=201,168 ft ²
C=0.84	C=0.84	C=0.84	C=0.84	C=0.84	C=0.84	C=0.84	C=0.84
Vr=26,785 ft ³	Vr=24,908 ft ³	Vr=16,322 ft ³	Vr=16,247 ft ³	Vr=53,865 ft ³	Vr=48,961 ft ³	Vr=63,107 ft ³	Vr=39,711 ft ³
Vp=29,538 ft ³	Vp=26,810 ft ³	Vp=18,231 ft ³	Vp=21,243 ft ³	Vp=53,873 ft ³	Vp=57,624 ft ³	Vp=66,384 ft ³	Vp=41,250 ft ³

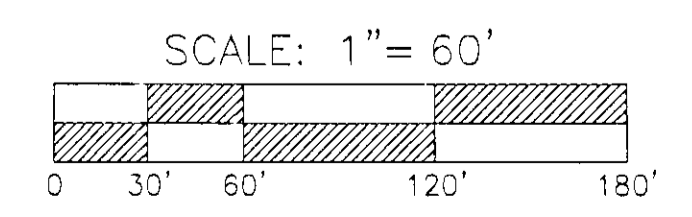
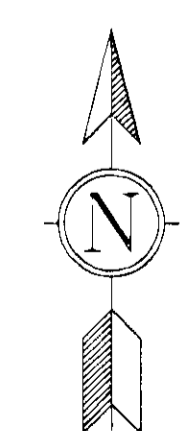
PT OF BEGINNING
 G.L.O. BRASS CAP
 HANDHOLE
 1/4 COR., SEC 14,
 1 N., R. 4 E.,
 S.R.B. & M.

SET REBAR W/CAP
 R.L.S. #22782

6" UTILITY EASEMENT
 DKT. 13776; PG. 106
 M.C.R.

PROPOSED
 ASHLER HILLS RD.
 50' R/W

30' INGRESS/EGRESS ESMT.
 PER DKT. 2024, PG. 585, MCR
 (SERVING PROPERTY DESCRIBED
 IN SAID DOCUMENT)



PRELIMINARY
 NOT FOR CONSTRUCTION
 OR RECORDING

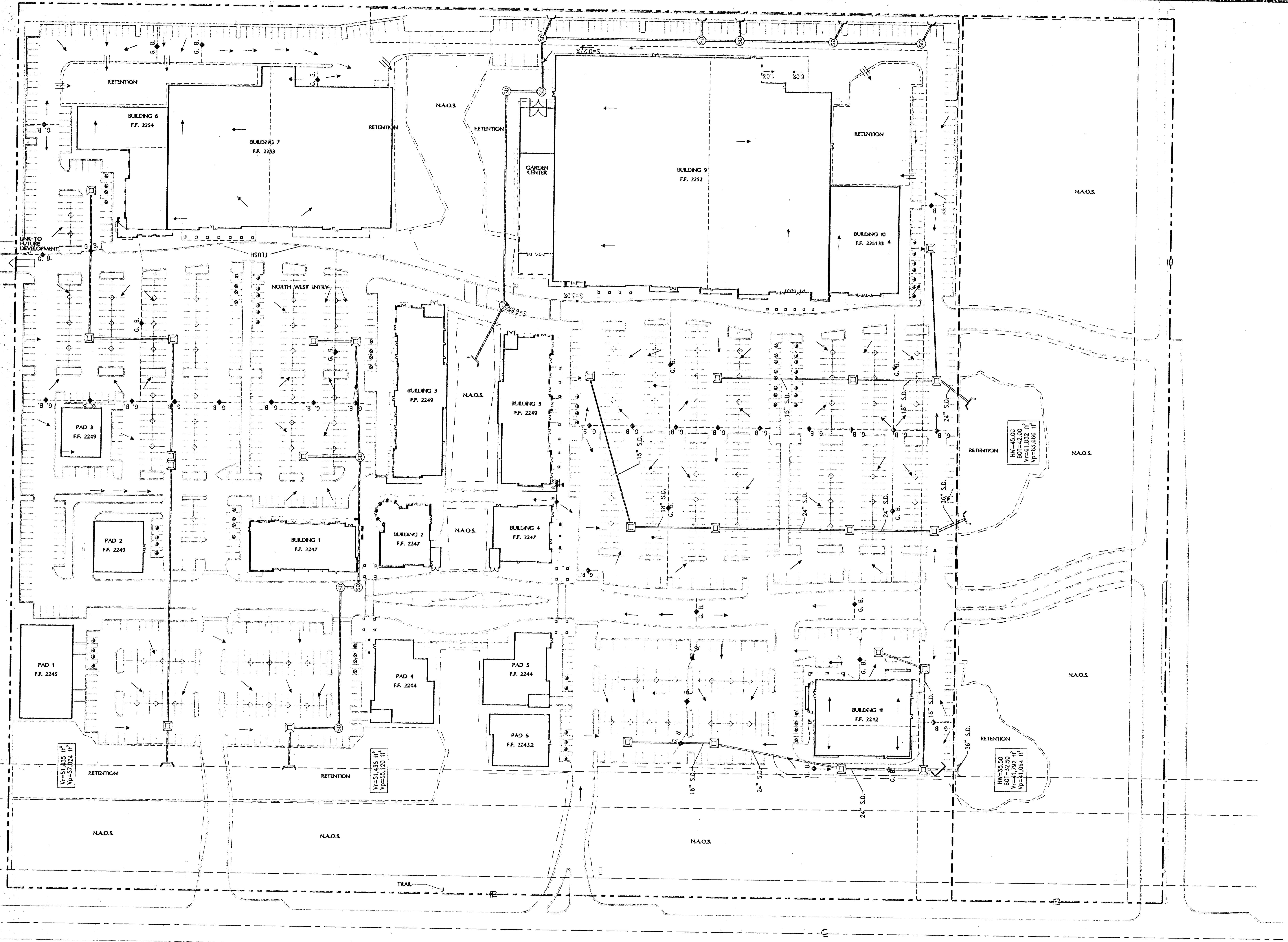
REVISIONS

NO.	DATE	DESCRIPTION

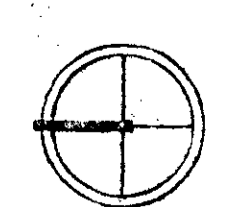
DATE: 11/22/09
 PROJ. NO.: 9102
 DESIGN: JSE
 DRAWN: RWS
 CHECK: JSE
 SCALE: 1"=60'
 CAD FILE: 9102C602



5097 74-25 11/22/09



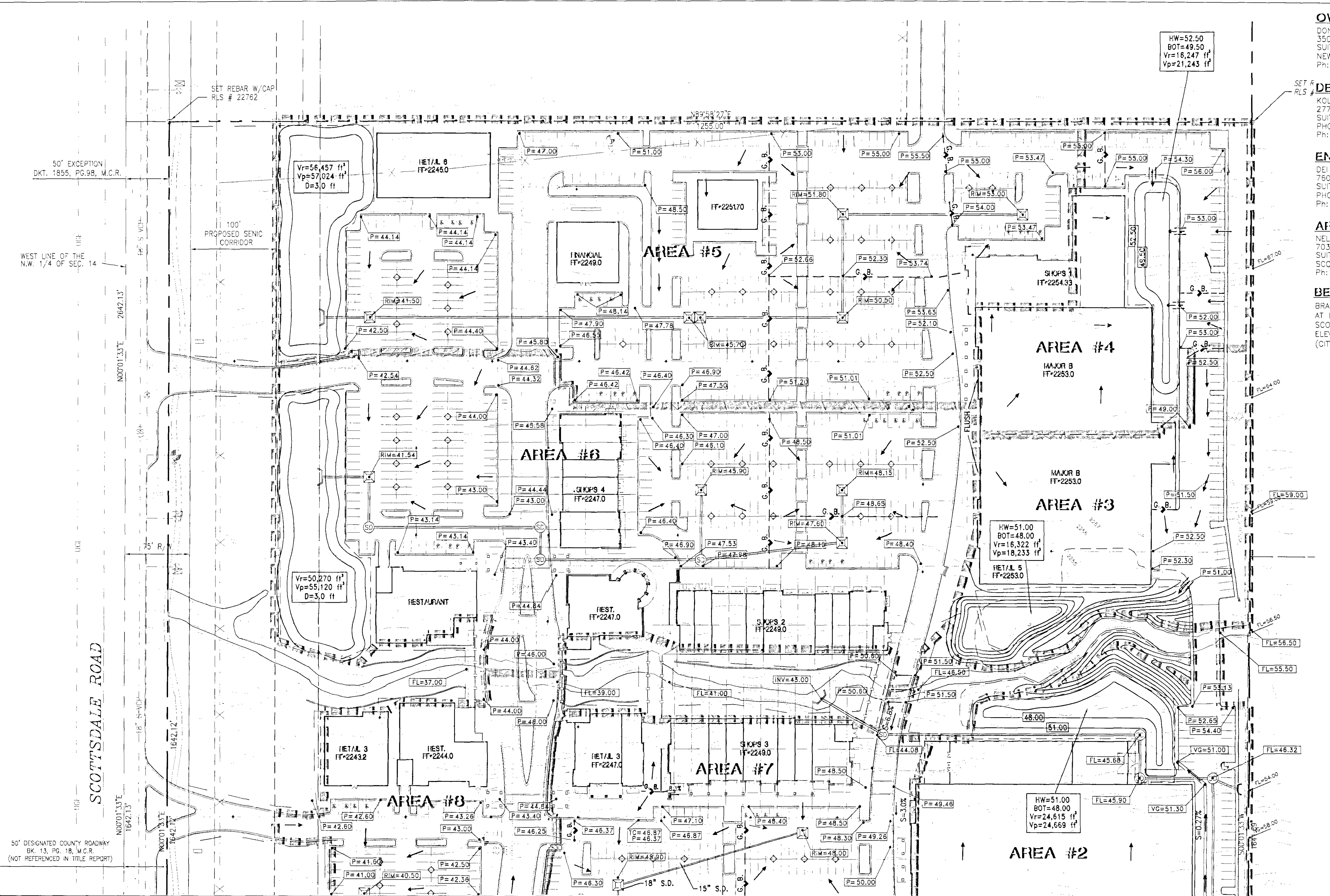
SCOTTSDALE ROAD



MASTER DRAINAGE PLAN

1/50" = 1'-0"

0 25' 50' 100'



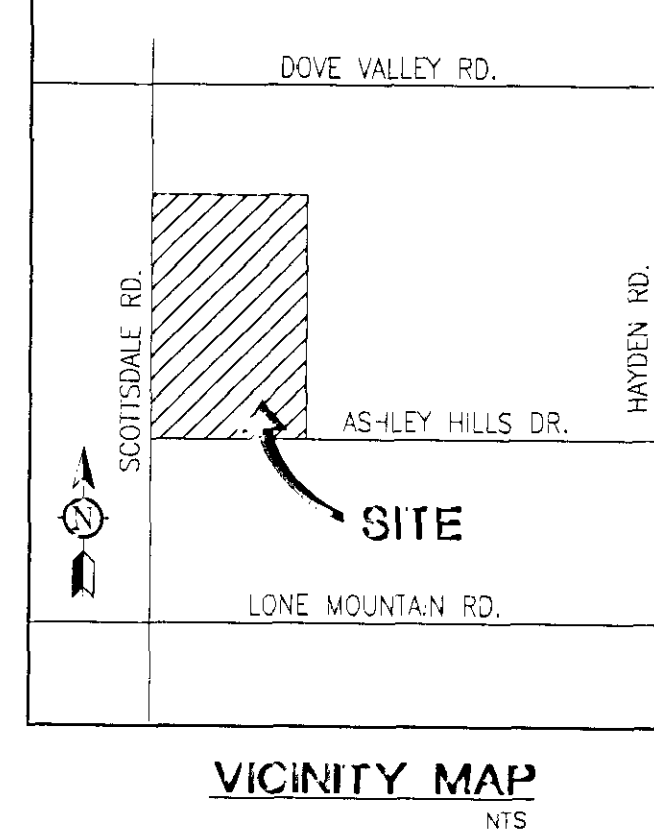
OWNER:
DONAHUE/SHRIBER
3501 JAWBOREE RD
SUITE 300
NEWPORT BEACH, CA 92660
Ph: (909) 000-0000

DEVELOPER:
KOLL DEVELOPMENT COMPANY
2777 E. CAMELBACK RD
SUITE 375
PHOENIX, ARIZONA 85016
Ph: (602) 000-0000

ENGINEER:
DEI PROFESSIONAL SERVICES
7600 N. 15TH STREET
SUITE 290
PHOENIX, ARIZONA 85020-4331
ELEV=2234.931
Ph: (602) 954-0038

ARCHITECT:
NELSON ARCHITECTS, INC.
7031 E. CAMELBACK RD
SUITE 100
SCOTTSDALE, ARIZONA 85251
Ph: (602) 000-0000

BENCHMARK:
BRASS CAP IN HAND HOLE
AT INTERSECTION OF
SCOTTSDALE ROAD AND ASHLER DRIVE
ELEV=2234.931
(CITY OF SCOTTSDALE DATUM)



- LEGEND OF EXISTING FEATURES:**
- EXIST. SANITARY SEWER MANHOLE
 - EXIST. WATER VALVE
 - WATER METER
 - EXIST. FIRE HYDRANT
 - 1/2" REBAR TO BE SET
 - Fd. BC IN HH
 - Fd. AS NOTED
 - SIGN
 - SAGUARO
 - IRRIGATION VALVE BOX
 - EXISTING GAS VALVE
 - TELCO J-BOX

- LEGEND OF PROPOSED FEATURES:**
- CATCH BASIN
 - DRAIN INLET
 - PROPOSED STORM DRAIN MANHOLE
 - G.B. - GRADE BREAK
 - DIRECTION OF FLOW
 - ┌ CURB OPENING
 - └ HEADWALL
 - STORM DRAIN
 - P=52.50 PAVEMENT ELEVATION
 - FL=46.50 FLOW LINE ELEVATION
 - VG=51.30 VALLEY GUTTER ELEVATION
 - FF=45.00 FINISHED FLOOR ELEVATION

DEI
PROFESSIONAL
SERVICES, L.L.C.
7600 N. 15th Street, Suite 290
Phoenix, Arizona 85020
Phone: (602) 954-0038
Fax: (602) 954-0039

1982 - 1999

17
YEARS OF
EXCELLENCE

DEI Professional
Services, L.L.C.

SUMMIT AT SCOTTSDALE
SCOTTSDALE, ARIZONA
CONCEPTUAL GRADING AND DRAINAGE PLAN

REVISIONS

NO.	DATE	DESCRIPTION

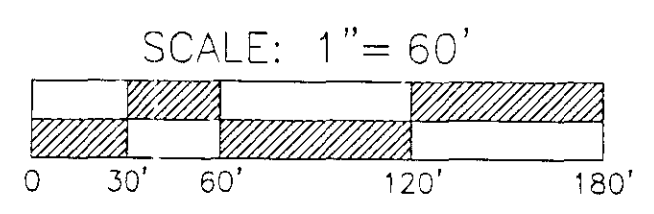
DATE: 11/22/99
PROJ. NO: 9102
DESIGN: JSE
DRAWN: RWS
CHECK: JSE
SCALE: 1"=60'
CAD FILE: 9102G01

RETENTION CALCULATIONS

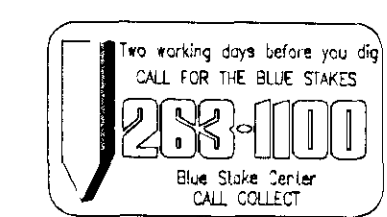
Volume Required = $\frac{D}{12} CA$
D = 2.82 inch
C = 0.84
A = Area, Acres

Volume Provided =

AREA #1	AREA #2	AREA #3	AREA #4	AREA #5	AREA #6	AREA #7	AREA #8
A=134,091 ft ²	A=124,698 ft ²	A=82,683 ft ²	A=82,304 ft ²	A=272,874 ft ²	A=248,031 ft ²	A=319,693 ft ²	A=201,168 ft ²
C=0.84	C=0.84	C=0.84	C=0.84	C=0.84	C=0.84	C=0.84	C=0.84
Vr=26,785 ft ³	Vr=24,908 ft ³	Vr=16,322 ft ³	Vr=16,247 ft ³	Vr=53,865 ft ³	Vr=48,961 ft ³	Vr=63,107 ft ³	Vr=39,711 ft ³
Vp=29,538 ft ³	Vp=26,810 ft ³	Vp=18,231 ft ³	Vp=21,243 ft ³	Vp=53,873 ft ³	Vp=57,624 ft ³	Vp=66,384 ft ³	Vp=41,250 ft ³



PRELIMINARY
NOT FOR CONSTRUCTION
OR RECORDING



11/22/99
309 Ph 99