

Scottsdale First Assembly Dream Center
88-PA-2001

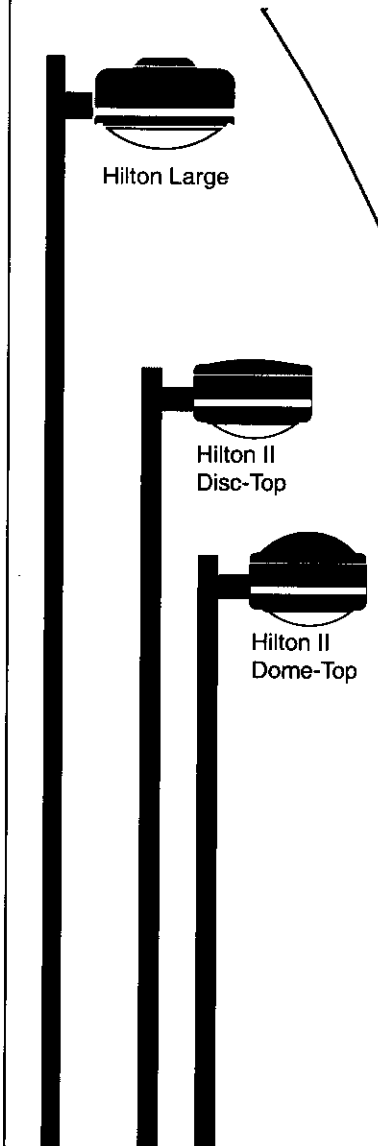
exterior light fixture cutsheets

88-PA-2001#2

15 may 2003

36-DR-2003
05/20/2003

HILTON CONTOURED LENS



THE HILTON® CONTOURED LENS SERIES

Available in two sizes, the Hilton Contoured Lens Series is designed with aesthetics, efficiency, and economics in mind. The Hilton II, designed around several reduced envelope lamps allows for a more compact fixture, which results in a lower EPA. The reduced load allows more use of existing poles for retrofitting or lower gauge, less expensive poles for new construction. The Hilton II's vertical lamp orientation and reflector systems provide efficient, uniform, high performance lighting for your site.

SPECIFICATIONS

HOUSING

Large: One-piece spun aluminum housing with bottom door access.

Hilton II: Round spun aluminum housing with a choice of two top-access covers (disc or dome).

DOORS/TOP COVER FASTENERS

Large: The fixture has four stainless steel captive door fasteners which provide secure closure and allow easy access with no loose hardware. For ease of installation, the door frame is field-removable.

Hilton II: The fixture has three stainless steel captive top-cover fasteners which provide secure closure and allow easy access with no loose hardware. The top cover is attached to housing via a tether clip, which frees both hands while servicing.

LIGHT SOURCES

Pulse-Start Metal Halide, Super Metal Halide, Metal Halide, Metal Halide Reduced Envelope, and High Pressure Sodium. Clear lamp is supplied as standard.

REFLECTORS/DISTRIBUTION PATTERNS

Large: Forward Ramp (FR).

Hilton II: Type II (2), Type III (3), Perimeter Forward Throw (FP), Automotive Forward Throw (FA), and Type V (5).

All reflectors are field rotatable and Photometric Data is tested in accordance with IESNA guidelines.

LENS/GASKET

The contoured glass lens measuring 1/8" in thickness is sealed to the cast aluminum lens frame (Large) or into the bottom of the top-access housing (Hilton II) with continuous EPDM extruded gasketing.

SOCKETS

Porcelain mogul-base sockets. All sockets are pulse-rated.

FINISHES

Each fixture is finished with LSI's DuraGrip® polyester powder coat finishing process. The DuraGrip finish withstands extreme weather changes without cracking or peeling, and is guaranteed for five full years. Standard colors include bronze, black, platinum plus, buff, white and green.

DECAL STRIPING

LSI offers optional color-coordinated decals in 9 standard colors to accent the fixture. Decals are guaranteed for five years against peeling, cracking, or fading.

BALLAST

High-power factor CWA ballasts, which are all designed for -20° F operation. The removable ballast tray features a quick-disconnect plug.

BRACKETS

Large Arm Mount:

2-1/2" x 6-7/8" x 6" extruded aluminum bracket designed to match luminaire housing is standard with all configurations. Bracket and housing attach to round pole with through-bolts and a one-piece, back-up pole nut plate (included with fixture).

Hilton II Arm Mount:

2-1/2" x 5-3/8" x 6" length extruded aluminum bracket is shipped standard. A Round Pole Plate (RPP2) is provided as standard for mounting to 3" - 5" round poles.

Hilton II Pole Top: The cast aluminum mounting hub conceals the wiring compartment and mounts directly to LSI's unique "pole-top mounting plate", via a high-strength grade five steel bolt with nylon insert and split lock washer for double locking. Support arms consist of four 11/16" O.D. aluminum rods and are prewired for ease of installation.

POLES

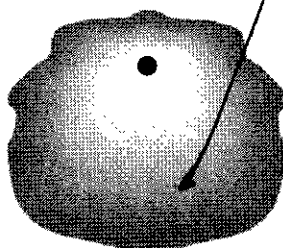
Refer to Poles/Brackets section of catalog for pole information.



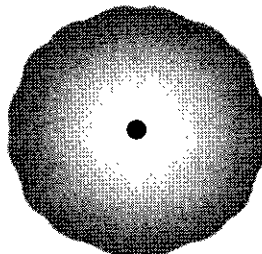
Listed for wet locations.

PHOTOMETRICS

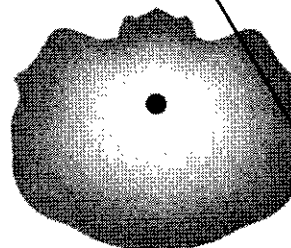
For detailed photometric data, please visit our web site at www.lsi-industries.com.



HIL Type FR - Horizontal



HR Type 5 - Vertical



HR Type FA - Vertical



10000 Alliance Road ♦ Cincinnati, Ohio 45242 ♦ (513)793-3200 FAX (513)984-1335 ♦ www.lsi-industries.com

HILTON CONTOURED LENS SERIES

CATALOG#

FIXTURE TYPE

DIMENSIONS

	A	B	C
HIL Arm Mount	29"	18"	—
HR Arm Mount - Disc	26"	17-7/8"	—
HRP Pole Top - Disc	26"	17-7/8"	24-1/4"
HRD Arm Mount - Dome	26"	21-1/4"	—
HRPD Pole Top - Dome	26"	21-1/4"	27-5/8"



Large Arm Mount



Arm Mount - Dome



Pole Top Mount - Dome



Bracket -
2-bolt Pattern
(Hilton II)



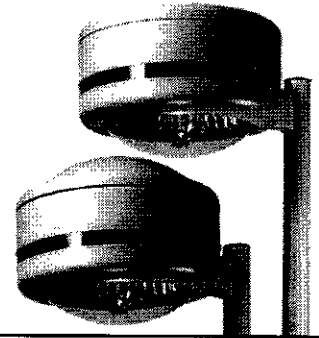
Bracket -
2-bolt Pattern
(Hilton Large)



Arm Mount - Disc



Pole Top Mount - Disc



LUMINAIRE EPA CHART

Includes bracket.

	Pole Top Mount	Single	D90°	D180°	T90°	TN120°	Q90°
Hilton Large (HIL) 6" Bracket	—	2.0	3.5	3.9	5.5	5.5	7.1
Hilton II Disc Top - 6" Arm Mount Bracket (HR)	—	1.9	3.3	3.7	5.2	5.2	6.7
Hilton II Disc Top - Pole Top (HRP)	2.0	—	—	—	—	—	—
Hilton II Dome Top - 6" Arm Mount Bracket (HRD)	—	2.1	3.6	4.1	5.7	5.7	7.4
Hilton II Dome Top - Pole Top (HRPD)	2.2	—	—	—	—	—	—

LUMINAIRE ORDERING INFORMATION

Select appropriate choice from each column to formulate order code. Refer to example below.

Luminaire Prefix	Distribution	Lamp Wattage	Light Source	Lens	Line Voltage ²	Luminaire Finish	Options
Hilton II Vertical Burn	2 - Type II	250	PSMV - Pulse-Start Metal Halide	CT - Contoured	480V	BRZ - Bronze	PCE120V - External Photocell ⁶
Disc Top	3 - Type III	320	250, 320, 400, 750, 1000 Watt	Clear	MT - Multi Tap ⁴	BLK - Black	PC208V - External Photocell ⁶
HR - Arm Mount	FP - Perimeter	400	SMV - Super Metal Halide	Tempered	TT - Tri-Tap ⁵	PLP - Platinum Plus	PC240V - External Photocell ⁶
HRP - Pole Top ¹	FA - Automotive	750	Vertical, 400 Watt	Glass		BUF - Buff	PCE277V - External Photocell ⁶
Dome Top	5 - Type V	1000	MH - Metal Halide			WHT - White	LL - Less Lamp
HRD - Arm Mount			250, 400 Watt			GRN - Green	
HRPD - Pole Top ¹			MHR - Metal Halide Reduced Envelope 1000 Watt				PCR - Photoelectric Control Receptacle ⁷
Hilton Large Horizontal Burn	FR - Forward Ramp	1000	MHR - Metal Halide Reduced Envelope 1000 Watt				LL - Less Lamp
HIL - Large Arm Mount							

Color Decals
45 - Light Gold Metallic
20 - Charcoal Metallic
94 - Blue Metallic
59 - Dark Green
21 - Tomato Red
55 - Black
50 - White
51 - Dark Red
700 - Aztec Silver Metallic

EXAMPLE OF A TYPICAL ORDER

HR 5 1000 MHR CT MT BRZ PCE120V 45

- When ordering pole top fixtures for tenon mounting, a pole top adaptor must be ordered.
- Multi Tap is not available in 750W High Pressure Sodium. Specify voltage required.
- For international voltages, consult factory.
- MT - Multi Tap is shipped standard unless otherwise specified. Multi Tap consists of 120V, 208V, 240V, and 277V. Multi Tap is pre-wired for highest voltage. Alternate voltages will require field re-wiring.

- Tri-Tap is shipped standard for CUL applications. Tri-Tap consists of 120V, 277V, and 347V. Tri-Tap is pre-wired for highest voltage. Alternate voltages will require field re-wiring.
- External photocell "option" compatible with Hilton II only.
- PCR compatible with Hilton Large. PCR factory installed and prewired for highest voltage. Alternate voltages will require field re-wiring.

ACCESSORY ORDERING INFORMATION

(Accessories are field installed)

Description	Order Number	Description	Order Number
PC120V - Photocell*	122514	BAK-RBG-WM-* CLR Wall Mount Plate	123113CLR
PC208V - Photocell*	122515	HR 2 HSS - House Side Shield	156252**
PC240V - Photocell*	122516	HR 3 HSS - House Side Shield	156383**
PC277V - Photocell*	122517	HR FP/FA HSS - House Side Shield	156383**
PC480V - Photocell*	122518		
FK120V - Single Fusing	FK120V		
FK277V - Single Fusing	FK277V		
DFK208, 240V - Double Fusing	DFK208, 240V		
DFK480V - Double Fusing	DFK480V		
FK347V - Single Fusing	FK347V		

+ PCR Compatible with Hilton Large only.

** Black Only

HILTON FLAT LENS



Hilton Large

Hilton II
Disc Top

Hilton II
Dome Top

Hilton II Small
Disc Top

Hilton II Small
Dome Top

THE HILTON® FLAT LENS SERIES

LSI's Hilton Flat Lens fixtures uniquely combine the high performance and benefits of traditional vertical burn technology, with full cut-off distribution, afforded by a flat lens. Specially designed reflectors provide uniform, high performance lighting while the flat glass lens ensures the full cut-off distribution as defined by IESNA. Offered in three sizes, the Hilton Series gives you quality lighting and architectural appeal.

SPECIFICATIONS

HOUSING

Large: One-piece spun aluminum housing with bottom door access.

Hilton II and Hilton II Small: Round spun aluminum housing with a choice of two top-access covers (disc or dome).

DOORS/TOP COVER FASTENERS

Large: Four stainless steel captive door fasteners provide secure closure and allow easy access with no loose hardware. For ease of installation, the door frame is field-removable.

Hilton II: Three stainless steel captive top-cover fasteners provide secure closure and allow easy access with no loose hardware. The top cover is attached to housing via a tether clip, which frees both hands while servicing.

LIGHT SOURCES

Pulse-Start Metal Halide, Super Metal Halide, Metal Halide, Metal Halide Reduced Envelope, or High Pressure Sodium. Clear lamp is supplied as standard.

REFLECTORS/DISTRIBUTION PATTERNS

Large: Type III (3), Perimeter Forward Throw (FP), Automotive Forward Throw (FA), and Type V (5).

Hilton II: Type III (3), Perimeter Forward Throw (FP), and Type V (5).

Hilton II Small: Type II (2) vertical only, Type III (3), Forward Throw (FT/FP), and Type V (5).

All but Hilton II Small reflectors are field rotatable. Photometric data is tested in accordance with IESNA guidelines.

PHOTOMETRICS

For detailed photometric data, please visit our web site at www.lsi-industries.com.

LENS/GASKET

The flat tempered glass lens, measuring 1/8" in thickness, is sealed to the cast aluminum lens frame (Large) or into the bottom of the top access housing (Hilton II and Hilton II Small) with continuous EPDM extruded gasketing.

SOCKETS

Porcelain mogul base sockets. All sockets are pulse-rated.

FINISHES

Each fixture is finished with DuraGrip®, LSI's baked-on polyester-powder finishing process. The DuraGrip polyester finish withstands extreme weather changes without cracking or peeling and is guaranteed for five full years. Standard finish colors are bronze, black, platinum plus, buff, white, and green.

DECAL STRIPING

LSI offers optional color-coordinated decals in 9 standard colors to accent the fixture. Decals are guaranteed for five years against peeling, cracking, or fading.

BALLAST

High-power factor CWA ballast designed for -20° F operation. The removable ballast tray features a quick-disconnect plug.

BRACKETS

Large Arm Mount:

2-1/2" x 6-7/8" x 6" extruded aluminum bracket is standard. Bracket and housing attach to round pole with through-bolts and a one-piece, back-up pole nut plate (included with fixture). A round Pole Plate (RPP2) is provided as standard for mounting to 3" - 5" round poles.

Hilton II and Hilton II Small Arm Mount:

A 2-1/2" x 5-3/8" x 6" length extruded aluminum bracket is shipped standard. A round Pole Plate (RPP2) is provided as standard for mounting to 3" - 5" round poles.

Pole Top: The cast aluminum mounting hub conceals the wiring compartment and mounts directly to LSI's unique "pole-top mounting plate", via a high-strength grade five steel bolt with nylon insert and split lock washer for double locking.

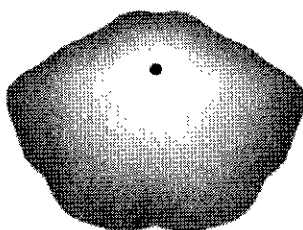
Support arms consist of four 11/16" O.D. aluminum rods and are pre-wired for ease of installation.

POLES

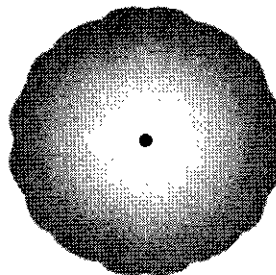
Refer to Poles/Brackets section of catalog for pole information.



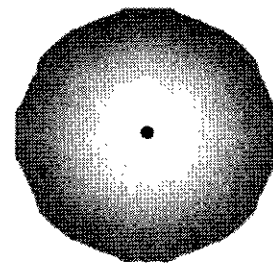
Listed for wet locations.



HFL Type FP - Vertical



HFL Type 5 - Vertical



HR Type 5 - Vertical



Lighting Systems™

10000 Alliance Road ♦ Cincinnati, Ohio 45242 ♦ (513)793-3200 FAX (513)984-1335 ♦ www.lsi-industries.com

HILTON FLAT LENS SERIES

FIXTURE TYPE

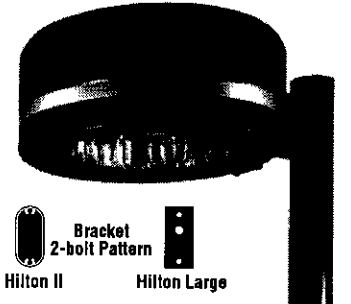
DIMENSIONS

	A	B	C
HFL Arm Mount	29"	15-1/8"	—
HFPL Pole Top	29"	15-1/8"	24-1/4"
HFR Arm Mount - Disc	26"	14"	—
HFRD Pole Top - Disc	26"	14"	24-1/4"
HFRD Arm Mount - Dome	26"	17-1/2"	—
HFRD Pole Top - Dome	26"	17-1/2"	27-5/8"
HFSV/HFSH Arm Mount - Disc	20"	11 - 3/8"	—
HFPSV/HFPSH Pole Top - Disc	20"	11 - 3/8"	18 - 5/8"
HFSDV/HFSDH Arm Mount - Dome	20"	14"	—
HFPSDV/HFPSDH Pole Top - Dome	20"	14"	21 - 1/4"

Arm Mount



Pole Top Mount



LUMINAIRE EPA CHART

Includes 6" bracket.

	Pole Top Mount	Single	D90°	D180°	T90°	TN120°	Q90°
Hilton Large (HFL)	2.0	1.9	3.4	3.7	5.2	5.3	6.8
Hilton II Disc Top (HFR)	1.8	1.9	3.3	3.7	5.2	5.2	6.7
Hilton II Dome Top (HFRD)	2.0	2.1	3.6	4.1	5.7	5.7	7.4
Hilton II Small Disc Top (HFSV/HFSH)	1.1	1.1	1.8	2.1	2.9	2.9	3.7
Hilton II Small Dome Top (HFSDV/HFSDH)	1.3	1.2	2.2	2.5	3.4	3.4	4.4

LUMINAIRE ORDERING INFORMATION

Select appropriate choice from each column to formulate order code. Refer to example below.

Luminaire Prefix	Distribution	Lamp Wattage	Light Source	Lens	Line Voltage ³	Luminaire Finish	Options
Hilton II Small Horizontal Disc Top HFSH - Arm Mount HFPSH - Pole Top ¹ Dome Top HFSDH - Arm Mount HFPSDH - Pole Top ¹	3 - Type III FT - Forward Throw 5 - Type V Square	100 150 175 250 320	PSMH-Pulse-Start Metal Halide 320 Watt MH - Metal Halide 175, 250 Watt HPS - High Pressure Sodium 100, 150, 250 Watt	F - Flat Clear Tempered Glass	480V MT - Multi Tap ⁴ TT - Tri-Tap ⁵	BRZ - Bronze BLK - Black PLP - Platinum Plus BUF - Buff WHT - White GRN - Green	PCI120V - Button Type PCI208V - Button Type PCI240V - Button Type PCI277V - Button Type LL - Less Lamp
Hilton II Small Vertical Disc Top HFSV - Arm Mount HFPSV - Pole Top ¹ Dome Top HFSDV - Arm Mount HFPSDV - Pole Top ¹	2 - Type II 3 - Type III FP - Perimeter Forward Throw 5 - Type V Round	100 150 175 250 320	PSMV-Pulse-Start Metal Halide 175, 250, 320 Watt MH - Metal Halide 175, 250 Watt HPS - High Pressure Sodium 100, 150 Watt				
Hilton II Vertical Disc Top HFR - Arm Mount HFRD - Pole Top ¹ Dome Top HFRD - Arm Mount HFRD - Pole Top ¹	3 - Type III FP - Perimeter Forward Throw 5 - Type V Round	250 320 400	PSMV-Pulse-Start Metal Halide 250, 320, 400 Watt SMV-Super Metal Halide 400 Watt MH - Metal Halide 250, 400 Watt HPS - High Pressure Sodium 250, 400 Watt				PCE120V - External Photocell ⁶ PCE208V - External Photocell ⁶ PCE240V - External Photocell ⁶ PCE277V - External Photocell ⁶ LL - Less Lamp
Hilton Large Vertical HFL - Arm Mount HFPL - Pole Top ¹	3 - Type III FP - Perimeter Forward Throw FA - Automotive Forward Throw 5 - Type V Square	750 1000	PSMV - Pulse-Start Metal Halide 750, 1000 Watt MHR - Metal Halide Reduced 1000 Watt HPS - High Pressure Sodium 750 ² Watt				PCR - Photoelectric Control Receptacle ⁷ LL - Less Lamp

Color Decals
45 - Light Gold Metallic
20 - Charcoal Metallic
94 - Blue Metallic
59 - Dark Green
21 - Tomato Red
55 - Black
50 - White
51 - Dark Red
700 - Aztec Silver Metallic

EXAMPLE OF A TYPICAL ORDER

HFL 5 1000 MHR F MT PLP PCR 20

- When ordering pole top fixtures for tenon mounting, a pole top adaptor must be ordered.
- Multi Tap is not available in 750W High Pressure Sodium. Specify voltage required.
- For international voltages, consult factory.
- MT - Multi Tap is shipped standard unless otherwise specified. Multi Tap consists of 120V, 208V, 240V, and 277V. Multi Tap is pre-wired for highest voltage. Alternate voltages will require field re-wiring.

- Tri-Tap is shipped standard for C-UL applications. Tri-Tap consists of 120V, 277V, and 347V. Tri-Tap is pre-wired for highest voltage. Alternate voltages will require field re-wiring.
- External photocell is compatible with Hilton II only.
- PCR compatible with Hilton Large only. PCR factory installed and prewired for highest voltage. Alternate voltages will require field rewiring.

ACCESSORY ORDERING INFORMATION

(Accessories are field installed)

Description	Order Number	Description	Order Number
PC120V - Photocell	122514	DFK480V - Double Fusing	DFK480V
PC208V - Photocell	122515	FK347V - Single Fusing	FK347V
PC240V - Photocell	122516	HFL FP HSS - House Side Shield	4343004*
PC277V - Photocell	122517	HFR FP HSS - House Side Shield	156383*
PC480V - Photocell	122518	HFSH/HFSV FP/3 HSS - House Side Shield	168505*
FK120V - Single Fusing	FK120V	HFSV 2 HSS - House Side Shield	168505*
FK277V - Single Fusing	FK277V	BAK-RBO-WM-* - CLR Wall Mount Plate	123113CLR
DFK208, 240V - Double Fusing	DFK208, 240V		

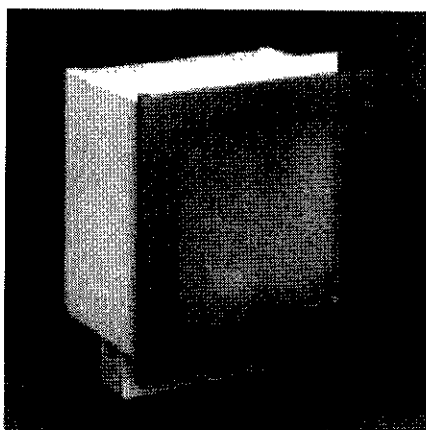
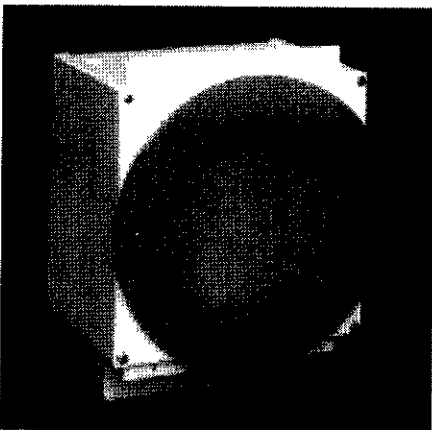
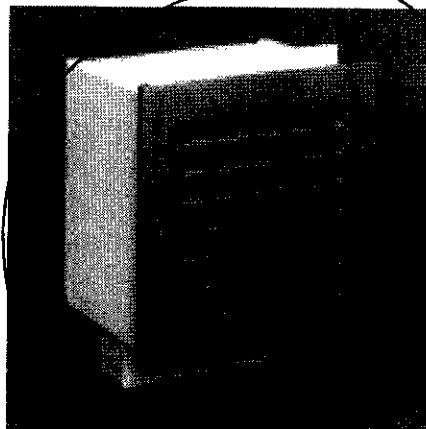
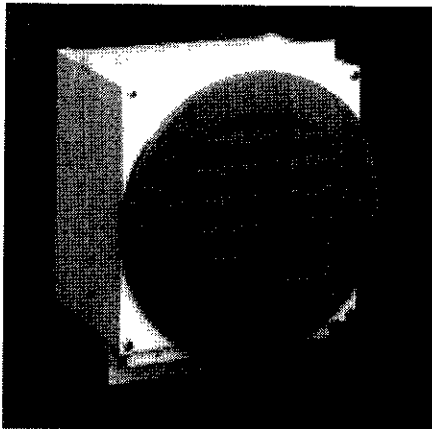
*Black only.

Walkway Lighting Steplites

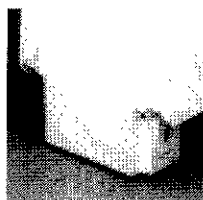
F3

3300 SERIES

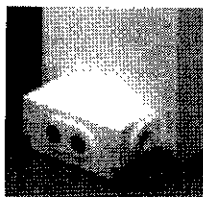
Series	Incan.	Fluor.	HID	Exterior	Interior	Feed-Thru	Other Options
3300			•	•		•	Cast bronze front 277V electrical Tamperproof screws



3300 Series steplites are available with round or square cast aluminum faceplates.



Mercury vapor, high pressure sodium, or metal halide lamps may be specified for this series.



The junction box on Cole Steplites may be field mounted to the back or bottom of the fixture.

Description

The 3300 Series of Steplites is a high performance site fixture for large areas. Its large aperture allows high light levels to the sides as well as in front of the fixture for many exterior locations. The rugged construction, engineering excellence, and quality make these fixtures ideal for specification in most public areas.

Features

Louvers in the 3300 Series are more widely spaced than in most fixtures of this type, allowing for significantly greater forward projected illumination. Exceptional durability is provided by the thick cast aluminum louvered faceplate which protects the tempered glass diffuser while controlling the distribution of light. Cole Steplites feature a cast aluminum junction box which may be easily field mounted to either the back or bottom of the housing to best suit installation conditions.

Applications

The 3300 Series Steplites are suitable for concrete pour/block wall mounting in outdoor installations. They are ideal in walls, ramps, and stairwells where high light levels are desirable.

Custom

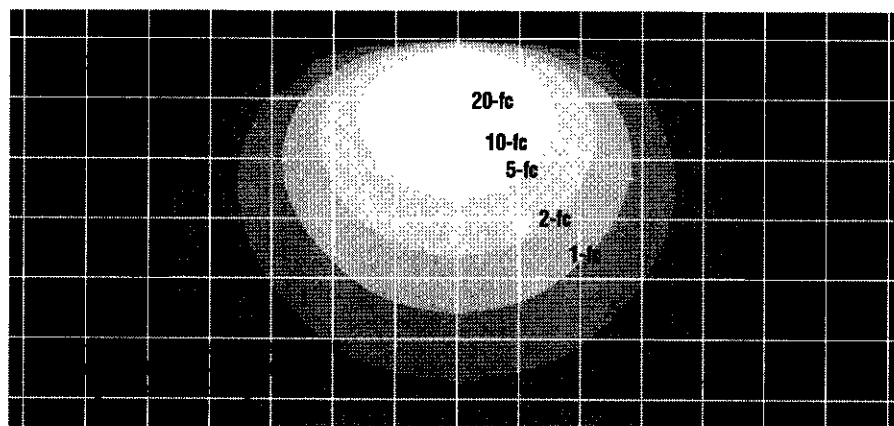
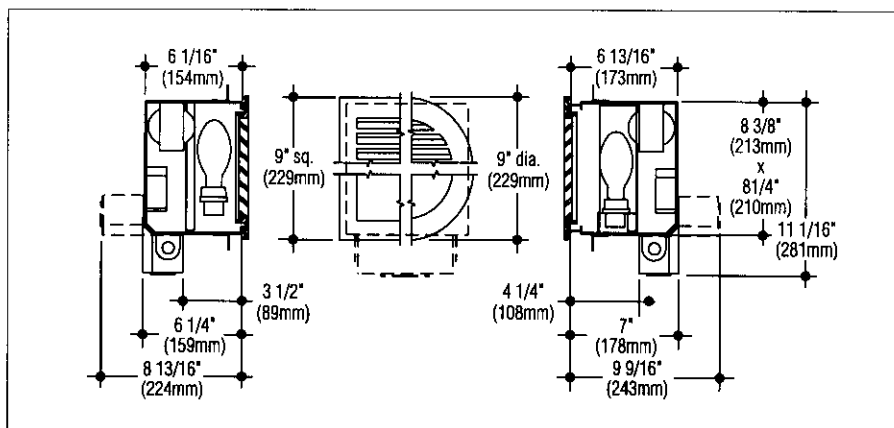
If your project demands a special fixture we would be pleased to discuss the production of modified standard fixtures or custom fixtures to suit your specific conditions. Modifications possible include special sizes and shapes, special finishes, materials such as stainless steel or cast bronze, and alternate light sources. For more information on our custom capabilities, please contact your local Cole representative.

COLE

LIGHTING SINCE 1911

C. W. Cole & Company, Inc.
2560 N. Rosemead Boulevard
South El Monte, CA 91733-1593

Fax (626) 443-9253
Tel. (626) 443-2473
info@colelighting.com
www.colelighting.com



The isolux curves illustrated above show the footcandle distribution for a 3300 Series fixture with a 50W clear HPS lamp mounted at a height of 2'-0". The conversion chart provides the light output figures for various lamp types at four mounting heights. The lamp height determines the scale of the grid, i.e., for a fixture mounted at 3'-0" the grid becomes 3'-0" x 3'-0". To calculate the footcandles for each iso curve use the conversion factors shown in the chart as multipliers of the footcandles indicated for each iso curve.

Isolux Footcandle Conversion Chart

Lamp Type	Lum.	Mounting Height and Grid Scale			
		1'-0"	1'-6"	2'-0"	3'-0"
50W clear MV	1570	1.58	0.70	0.39	0.17
35W clear HPS	2250	2.25	1.00	0.56	0.25
50W clear HPS	4000	4.00	1.78	1.00	0.44
50W clear MH	3400	3.40	1.51	0.85	0.38

Catalog Numbers

Lamps	Faceplate			
	9" sq./Louver	9" sq./Glass	9" dia./Louver	9" dia./Glass
50W mercury vapor, medium base	HMV 3350S	HMV 3350SG	HMV 3350R	HMV 3350RG
35W high pressure sodium, medium base	HPS 3335S	HPS 3335SG	HPS 3335R	HPS 3335RG
50W high pressure sodium, medium base	HPS 3350S	HPS 3350SG	HPS 3350R	HPS 3350RG
50W metal halide, medium base	HMH 3350S	HMH 3350SG	HMH 3350R	HMH 3350RG

Options

Bronze Faceplate: Satin finished, red brass faceplate. To specify, add suffix **-B**.

Tamperproof Screws: Tamperproof allen head faceplate screws. To specify, add suffix **-TP**.

Ballasts: 277V ballast. To specify, add suffix **-277**.

High power factor. To specify, add suffix **-HPF**.

Alternate Faceplate Color: Black or white.

To specify, add suffix **-BLK** or **-WHT**.

How to Specify

1. Select catalog number with desired features.
2. Add suffixes for options required to meet job conditions.

Walkway Lighting Steplites

3300 SERIES

Specifications

Construction

- Fixture housing is constructed from die-formed 16 gauge steel finished with a white polyester coating
- Faceplate is cast aluminum with metallic aluminum powder coating, gasketed and retained by stainless steel screws
- Diffuser is frosted tempered glass set in silicone sealant
- Reflector is constructed of die-formed semi-specular aluminum
- Standard junction box is cast aluminum with polyester coating
- ETL listed, suitable for wet locations, in concrete pour/block wall construction.

Electrical

- Fixture is wired for medium base high-intensity discharge lamps of varying types and wattages. Ballasts are standard 120V (277V optional)
- Junction box allows 8 wire thru-wiring, four in and four out. Provided with two 1/2" tapped conduit entrances in the bottom and one 1/2" conduit entrance in each side.

Mounting

Housing has flanges with holes for mounting.

COLE
LIGHTING SINCE 1911

C. W. Cole & Company, Inc.
2560 N. Rosemead Boulevard
South El Monte, CA 91733-1593

Fax (626) 443-9253
Tel. (626) 443-2473
info@colelighting.com

**WINONA LIGHTING
WINSCAPE DIVISION**

P.O. BOX 1205
3760 WEST FOURTH STREET
WINONA, MN 55887
1-800-328-5291
FAX 507-432-8528

MR-16 LAMP
(50W MAX)

CAP C1

$\frac{1}{2}$ " NPS THREAD

CAP C2

CAP C4

CAP C3

CAP C5

TYPE: _____

7/2/02

FIXTURE SUBMITTAL

1. LAMPING OPTION	2. VOLTAGE	3. LENS OPTION	4. FINISH	5. FILTER	6. SHIELDING	7. CAP
0 = BY OTHERS 10 = ESX-20W-12" SPOT 11 = BAB-20W-40" FLOOD 12 = FRB-35W-12" SPOT 13 = FRA-35W-23" SPOT 14 = FMW-35W-40" FLOOD 15 = EYR-42W-12" SPOT 16 = EYS-42W-25" SPOT 17 = EYP-42W-40" FLOOD 18 = EXT-50W-13" SPOT 19 = EXZ-50W-28" SPOT 20 = EXN-50W-40" FLOOD 21 = FNV-50W-60" FLOOD	12V = 12 VOLT (AVAILABLE IN 12V ONLY)	L0 = NONE L1 = PRISMATIC L2 = LINEAR L3 = SOFTENING L4 = WATERSHED	BKS = BLACK, SMOOTH WHS = WHITE, SMOOTH BRS = BRONZE, SMOOTH SIS = SILVER, SMOOTH IVS = IVORY, SMOOTH CHS = CHROME NBS = NATURAL BRONZE BKT = BLACK, TEXTURED WHT = WHITE, TEXTURED BRT = BRONZE, TEXTURED VET = VERDE SAT = SAND CPF = CUSTOM PAINT SPF = STANDARD PAINT TO BE DETERMINED TO BE DETERMINED	FD = NONE FM = MERCURY VAPOR *FR = RED *FRD = RED DICHROIC FP = PINK FA = AMBER *FG = GREEN *FGD = GREEN DICHROIC FLB = LT BLUE *FMB = MED BLUE *FMBD = MED BLUE DICHROIC	SH0 = NONE SH6 = HONEYCOMB LOUVER	**C1 = FLUSH **C2 = LENS AND LAMP RECESSED **C3 = 45° CUT OFF **C4 = LENS FLUSH, LAMP RECESSED C5 = 45° SCALLOPED

ASPEN
GENERAL NOTES:

- REQUIRES A 12V TRANSFORMER,
PURCHASED SEPARATELY, UNLESS NOTED
- ALL LAMPS LISTED ARE MR-16'S
UNLESS OTHERWISE SPECIFIED.

*3. WHEN USING A COLOR FILTER WITH A 50W
LAMP, A DICHROIC FILTER IS REQUIRED TO
RETAIN U.L. LISTING (RED, GREEN & MED BLUE).

**4. SOME UL RESTRICTIONS APPLY WHEN USED
WITH POWERMOUNT STYLE'S A, C & D.

B. MODIFICATION DESCRIPTION

YOUR SPECIFICATION: AS - 18 - 12V - LO - SIS - FRD - SH6 - C1 - STD.

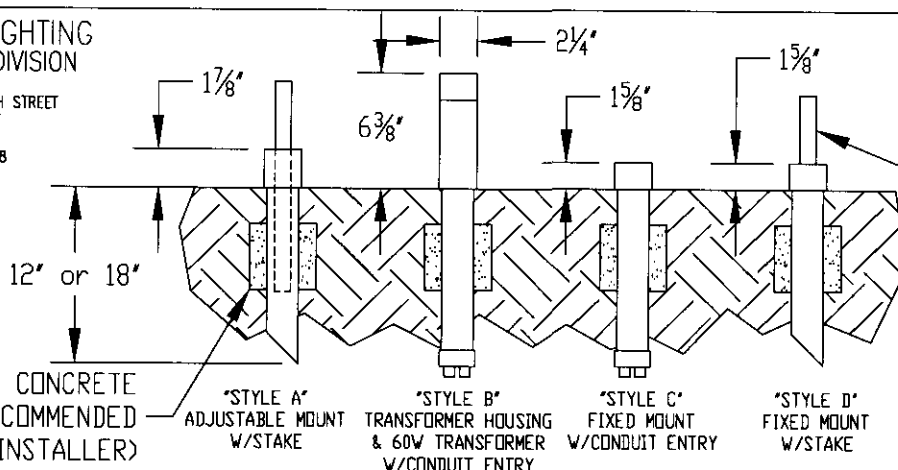
SAMPLE SPECIFICATION

	AS	18	12V	LO	SIS	FRD	SH6	C1	STD.
1. LAMP									
2. VOLTAGE									
3. LENS									
4. FINISH									
5. FILTER									
6. SHIELDING									
7. CAP									
8. SPECIAL (STD/MOD)									

PROJECT NAME: _____

F5

WINONA LIGHTING
WINSCAPE DIVISION
P.O. BOX 1205
3760 WEST FOURTH STREET
WINONA, MN 55987
1-800-328-5291
FAX 507-452-8528



TYPE: _____

STEMS AVAILABLE
FROM 3" TO 36" LONG
W/FIXED MOUNT &
12" TO 42" LONG
W/ADJUSTABLE MOUNT

Ø6"x6" CONCRETE
POUR RECOMMENDED
(BY INSTALLER)

STYLE A
ADJUSTABLE MOUNT
W/STAKE

STYLE B
TRANSFORMER HOUSING
& 60W TRANSFORMER
W/CONDUIT ENTRY

STYLE C
FIXED MOUNT
W/CONDUIT ENTRY

STYLE D
FIXED MOUNT
W/STAKE

5/29/01

FIXTURE SUBMITTAL

1. WATTAGE	2. VOLTAGE	3. STYLE	4. FINISH	5. STAKE LENGTH	6. STEM LENGTH
60W - 60 WATT (AVAILABLE IN 60W ONLY)	12V = 12 VOLT (AVAILABLE IN 12V ONLY)	A = ADJUSTABLE MOUNTING CAP W/ STAKE ***B = TRANSFORMER HOUSING & 60W TRANSFORMER W/ CONDUIT ENTRY ***C = FIXED MOUNTING CAP W/ CONDUIT ENTRY D = FIXED MOUNTING CAP W/ STAKE	BKS = BLACK, SMOOTH WHS = WHITE, SMOOTH BRS = BRONZE, SMOOTH SIS = SILVER, SMOOTH IVS = IVORY, SMOOTH CHS = CHROME NBS = NATURAL BRONZE BKT = BLACK, TEXTURED WHT = WHITE, TEXTURED BRT = BRONZE, TEXTURED VET = VERDE SAT = SAND	12 = 12" 18 = 18"	S0 = NONE *S3 = 3" *S6 = 6" S12 = 12" S18 = 18" S24 = 24" S30 = 30" S36 = 36" **S42 = 42"

POWERMOUNT-60

GENERAL NOTES:

- REQUIRES A 12V TRANSFORMER, PURCHASED SEPARATELY, UNLESS NOTED.
- 3" & 6" STEM NOT RECOMMENDED FOR USE WITH STYLE A (ADJUSTABLE MOUNTING).
- 42" STEM NOT RECOMMENDED FOR USE WITH FIXED MOUNTING (STYLES B, C & D).
- CONDUIT ENTRY CONSISTS OF TWO 1/2" CONDUIT CONNECTORS.
- POWERMOUNT-60, STYLES A,B & D NOT RECOMMENDED FOR USE WITH PALM, PINE, OR REDWOOD SERIES.

SAMPLE SPECIFICATION

	PM	60W	12V	B	VS	18	S18	STD.
1. WATTAGE								
2. VOLTAGE								
3. STYLE								
4. FINISH								
5. STAKE								
6. STEM								
9. SPECIAL (STD/MOD)								

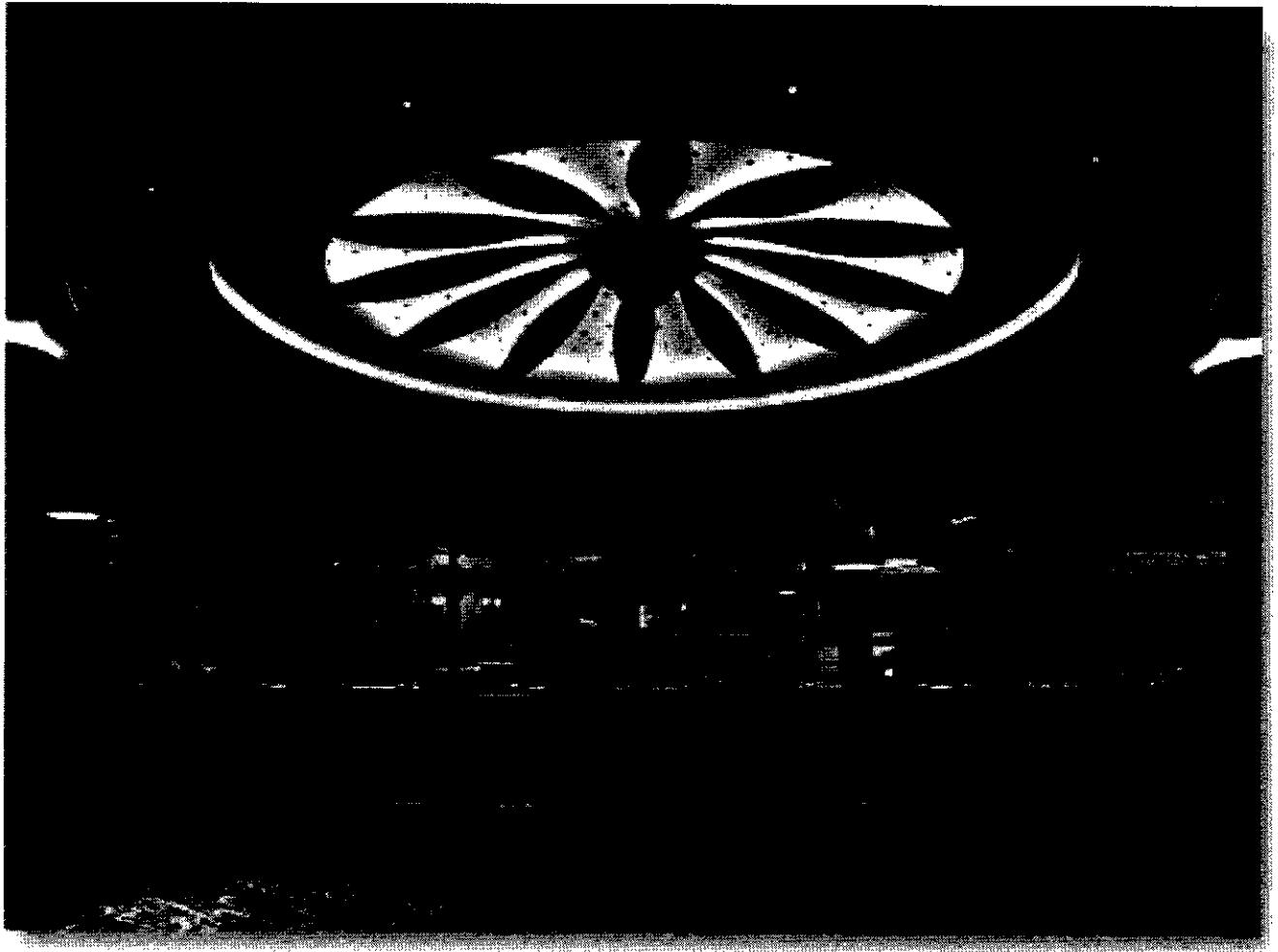
YOUR SPECIFICATION: PM - 60W - 12V - - - - -

9. MODIFICATION DESCRIPTION _____

PROJECT NAME: _____

FG

ADVANTAGE SERIES
INDIRECT XENON



TOKISTAR LIGHTING™ INCORPORATED

ADVANTAGE SERIES INDIRECT XENON THE STANDARD IN ARCHITECTURAL LINEAR LIGHTING

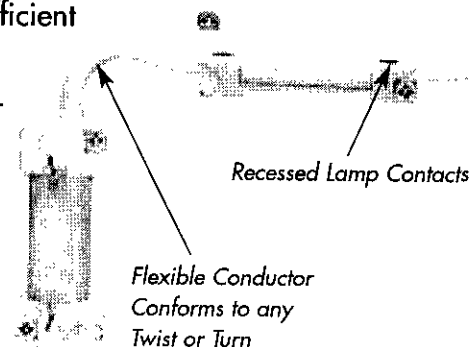
Since its introduction to the market, Tokistar's Advantage System has become the overwhelming choice of lighting professionals. What has attracted them most is the flexibility. Advantage easily turns corners and follows complex shapes without special effort or hardware.



Advantage was designed around the frosted rigid-loop xenon lamp for good reason. These lamps evenly distribute light in all directions, and have a rated life up to 20,000 hours.

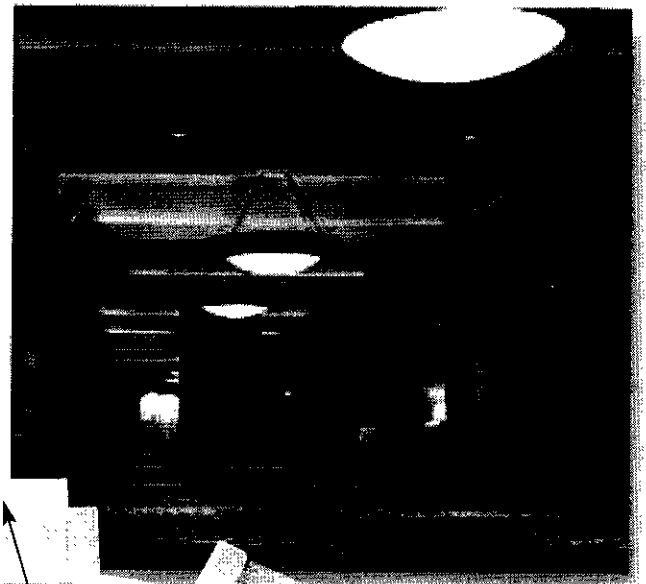
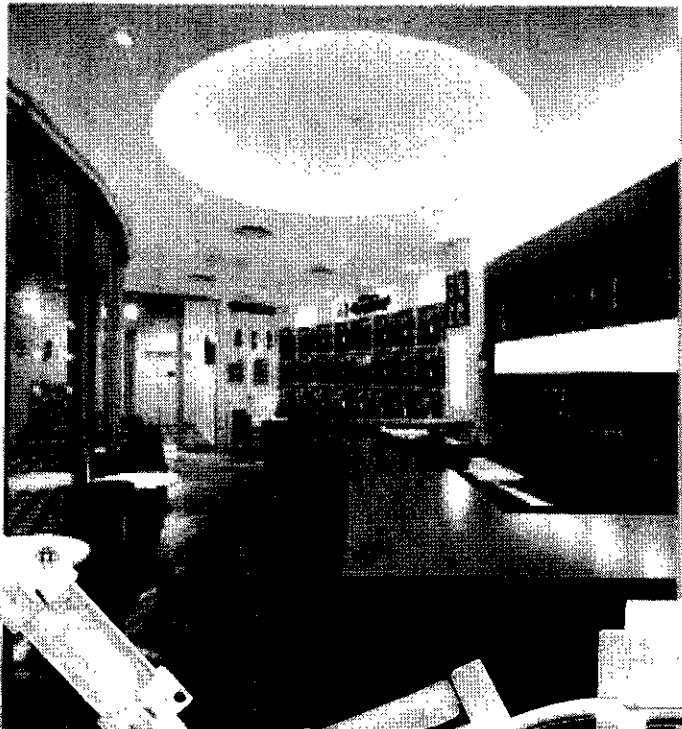
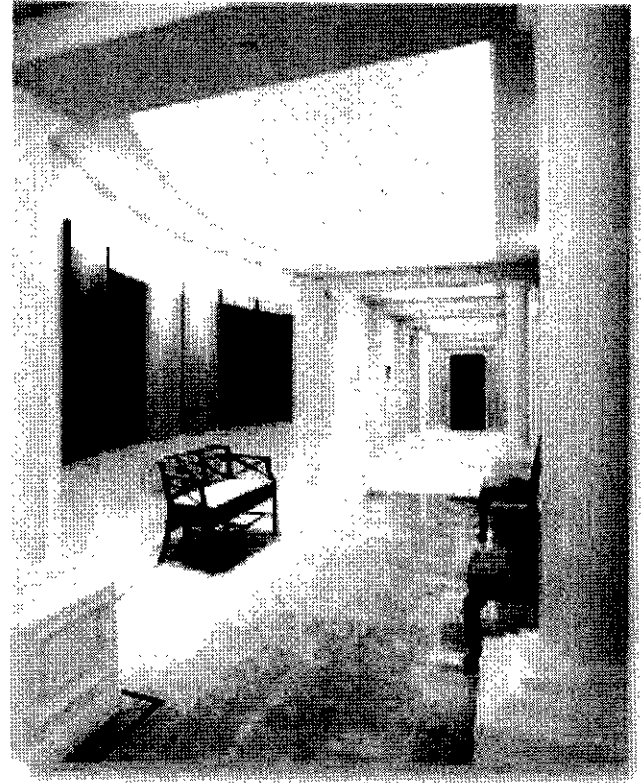
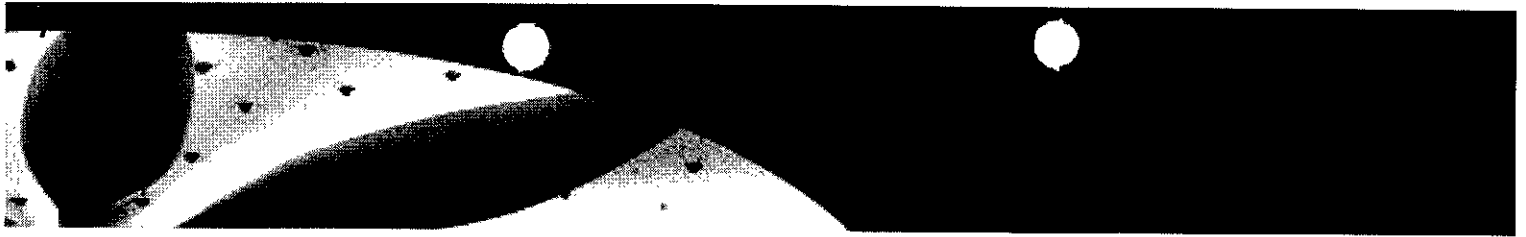
Combined with our narrow socket design and integrated reflectors, Advantage produces a scallop-free wash of light using fewer lamps per foot. The result... A highly efficient

fixture which costs less, conserves energy and saves on maintenance.



**TOKISTAR
LIGHTING**





Self-mounting Sockets

24 Volt Frosted Xenon Lamps

Optional Lens Shields Lamp

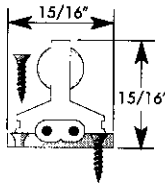
Reflector Spreads and Softens Light

DESIGN GUIDELINES

To determine the most attractive and efficient form of Advantage for your application, begin by selecting the best lamp spacing and wattage. Then tailor the system for your specific needs by selecting from the listed options and accessories.

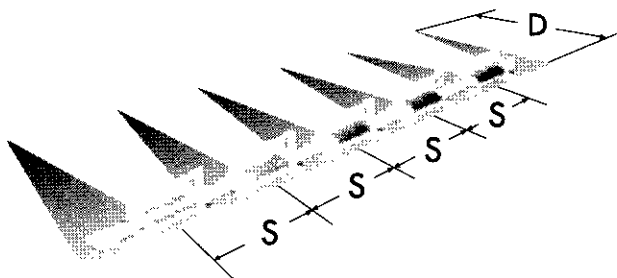
As a general rule, Catalog# AV-3-101 is suitable for the widest range of applications. This basic version of the product uses 5 watt lamps 3" on center, and can provide uniform light on surfaces positioned as close as 2" from the fixture. Lamp sockets are attached with mounting screws, offering complete flexibility in every direction.

This product features 20,000 hours of rated life and a pleasing 2,400°K color temperature.



Lamp Spacing Guide

The lamp spacing necessary to create a uniform wash of light varies, depending upon the distance between the fixture and the surface to be illuminated. Follow our recommendations to achieve a uniform wash of light at the most distant lamp spacing possible. Using a closer lamp spacing will still provide a uniform wash, with an even greater amount of light striking the surface.



D= Where Uniform
Light Begins
S= Lamp Spacing

D	RECOMMENDED SPACING
1.25"	No greater than 2.4" O.C.
2"	No greater than 3" O.C.
3"	No greater than 4" O.C.
4"	No greater than 6" O.C.

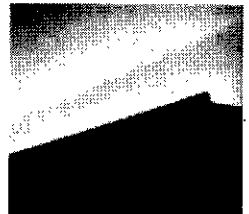
Lamp Style Guide

PART#: AV-101

Our most popular lamp, the AV-101 meets the requirements of most applications with the ideal balance of lamp life/lumen output/color temperature.

VOLTS: 24 COLOR: 2,400°K
LUMENS: 40 HOURS: 20,000

5 WATTS

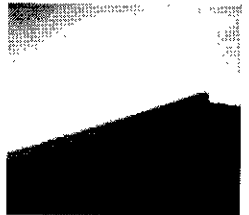


PART#: AV-102

Provides a higher lumen output and color temperature for applications where more heat can be tolerated. Note this lamp is not for use with lens covers.

VOLTS: 24 COLOR: 2,600°K
LUMENS: 85 HOURS: 10,000

8.5 WATTS

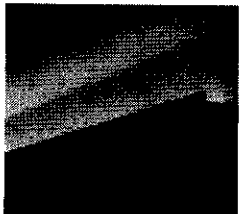


PART#: AV-103

Provides lower color temperature and lumen output, while producing less heat.

VOLTS: 24 COLOR: 2,300°K
LUMENS: 13 HOURS: 20,000

3 WATTS



HOW TO SPECIFY

SPECIFY BY CATALOG NUMBER

AV-3-101-LNS

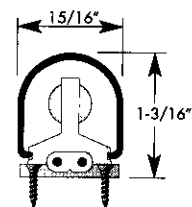
CODE	LAMP SPACING	CODE	LAMP STYLE	OPTIONAL	
				CODE	OPTIONS
2.4	2.4" O.C.	101	5 Watt	LNS	Lens Cover
3	3" O.C.	102	8.5 Watt	MC	Mounting Channel
4	4" O.C.	103	3 Watt	SR	Symmetrical Reflector
6	6" O.C.			AR	Asymmetrical Reflector
				BK	Black Finish

Options

Lens Covers

For applications where lamps need to be protected from direct contact, we offer a clear polycarbonate lens to shield each lamp. The ends of each lens are open, allowing the heat to vent. For use with 3 and 5 watt lamps only.

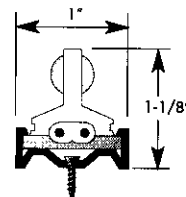
PART#: AV-LNS



Mounting Channel

A rigid high-temperature plastic channel is available for applications with straight runs. The channel is screwed in place, and the lamp sockets snapped in. This ensures perfect linear integrity of the fixture and reduces installation time.

PART#: AV-MC



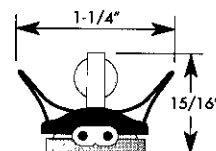
Symmetrical Reflector

For applications where a more concentrated beam of light is needed. These reflectors easily snap on to our existing sockets, with or without mounting channels, increasing light output toward the centerline of the fixture.

PART#: AVWH-REF-S (White)

PART#: AVBK-REF-S (Black)

*NOT FOR USE WITH 2.4" LAMP SPACING



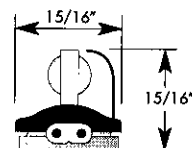
Asymmetrical Reflector

For shelves and cabinets where a more directional beam of light is needed. These reflectors also snap on to our existing sockets and channels, helping to deflect heat and reduce glare.

PART#: AVWH-REF-A (White)

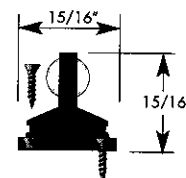
PART#: AVBK-REF-A (Black)

*NOT FOR USE WITH 2.4" LAMP SPACING



Black Finish

Although most Advantage is concealed behind moldings and ledges, there are many places where it also looks great exposed. We offer Advantage in a high-tech black finish to complement such applications.



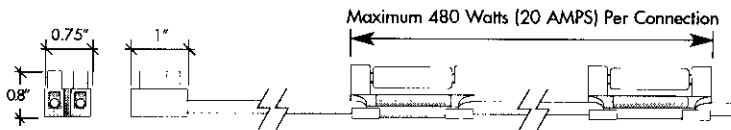
ACCESSORIES

Connectors

Terminal Block Connectors

PART#: AV-CONN

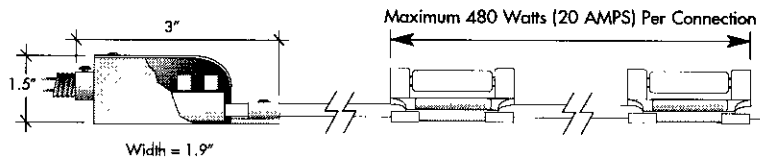
One end of this connector screws directly to the end of the Advantage fixture. The other end accepts AWG# 14, 12, or 10 wire. A hole is provided in the center of the connector for secure mounting.



Mini Junction Box Connectors

PART#: AV-JBOX

If installation involves running wire through a building structure, special wiring methods to the fixture may be required by code. A miniature junction box is available with a 1/2"Ø knockout for use with conduit fittings.



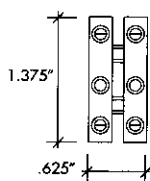
T-Connect System

PART#: AVWH-T-CONN (White)

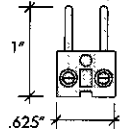
Here's a great convenience for applications in shelf, cabinet and showcase lighting. A main wiring harness can feed multiple fixtures (up to 480 watts) with the use of our T-connect system. Harnesses can be custom ordered with predetermined connector spacings, or easily created on site to exacting dimensions.

PART#: AVBK-T-CONN (Black)

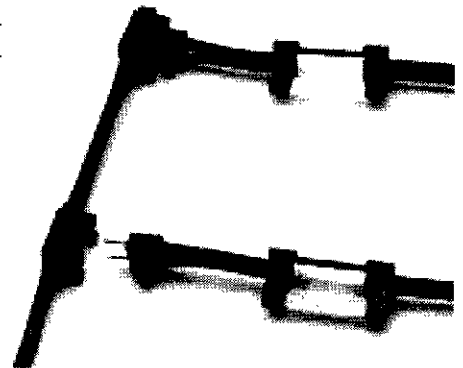
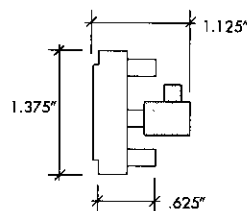
Male Receptacle



Female Receptacle



Assembled View

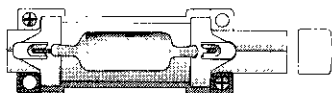


End Caps

Each length of Advantage is provided with a vinyl end cap as a protective insulation over the conductors at the end of a run.

PART#: ECD-WH (White)

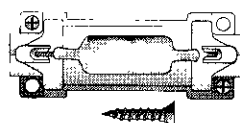
PART#: ECD-BK (Black)



Mounting Screws

Each lamp socket has four mounting holes. Use two screws in opposing corners for secure mounting.

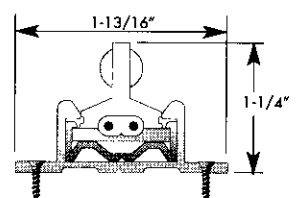
PART#: AV-MS



Channel Clamps

These clamps are for use with our AV-MC mounting channel. The clamps screw in place, and the channel snaps in.

PART#: AV-CL



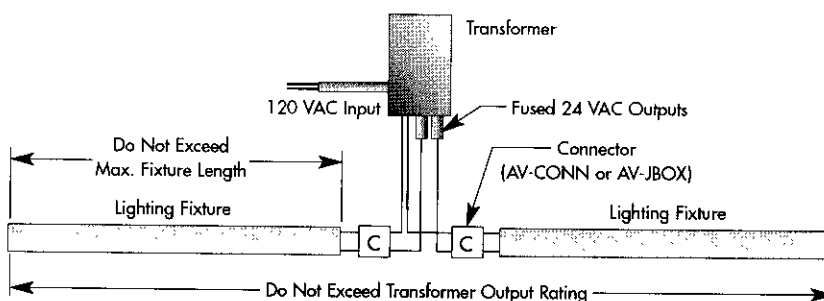


System Layout

When designing an Advantage Lighting System, consideration must be given to:

1. Maximum fixture length
2. Load of each transformer output
3. Total load of transformer

Longer runs of product can be operated by centrally locating the transformer and feeding fixtures to either side.



Maximum Fixture Size

The maximum capacity of a fixture must not exceed 20 amps (480 watts @ 24 volts). Run lengths exceeding these limitations will be provided in multiple fixtures, each requiring an independent feed running to the transformer. Additionally, fixtures using 3 watt lamps 4" and 6" O.C. are further restricted in size to prevent excessive voltage drop.

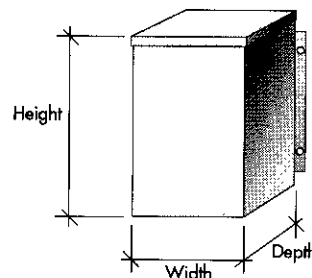
	Watts/Lamp Code		
	5 Watt/101	8.5 Watt/102	3 Watt/103
Maximum Lamps/Circuit	96 Lamps	56 Lamps	160 Lamps
Lamp Spacing	Maximum Lengths		
2.4" O.C.	19.2 FT.	11.2 FT.	32 FT.
3" O.C.	24 FT.	14 FT.	40 FT.
4" O.C.	32 FT.	18.6 FT.	48 FT.
6" O.C.	48 FT.	28 FT.	60 FT.

Transformers

Magnetic Transformers

Transformers are ETL Listed for use with lighting fixtures. These transformers are for use with 120 VAC/60 Hz input. The 24 volt secondary outputs are protected by inherent fuses, with a maximum rating of 20 amps. To determine the proper transformer, multiply the number of lamps by the watts per lamp. For larger transformers (T24-750 & T24-1000), consideration should be given to the maximum capacity of each fused output. Capacities shown are derated by 20%.

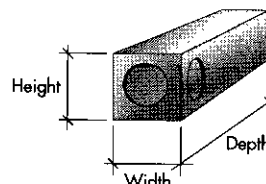
Part#	Output(s)	Approximate Sizes and Weight			
		Depth	Height	Width	Weight
T24-100	1 @ 80 Watts	5"	7"	5"	10 lbs.
T24-150	1 @ 120 Watts	5"	7"	5"	12 lbs.
T24-250	1 @ 200 Watts	5"	7"	5"	16 lbs.
T24-300	1 @ 240 Watts	5"	7"	6"	16 lbs.
T24-500	1 @ 400 Watts	5 1/2"	8"	7"	20 lbs.
T24-600	1 @ 480 Watts	5 1/2"	8"	7"	20 lbs.
T24-750	2 @ 300 Watts	7"	9"	7"	28 lbs.
T24-1000	2 @ 400 Watts	7"	9 1/2"	9"	32 lbs.



Electronic Transformers

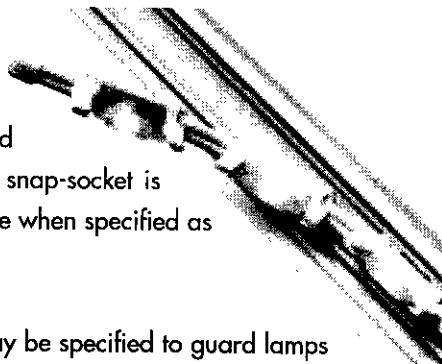
Ideal for use where space is limited, we offer two sizes of electronic transformers. These feature auto-reset electronic and short circuit protection, and can be used with a standard incandescent dimmer. Electronic transformers require a minimum load of 50 watts.

Part#	Output(s)	Approximate Sizes and Weight			
		Depth	Height	Width	Weight
T24-150-E	1 @ 150 Watts	6.5"	1.4"	1.5"	1 lbs.
T24-300-E	1 @ 300 Watts	9.4"	1.4"	1.6"	1.5 lbs.

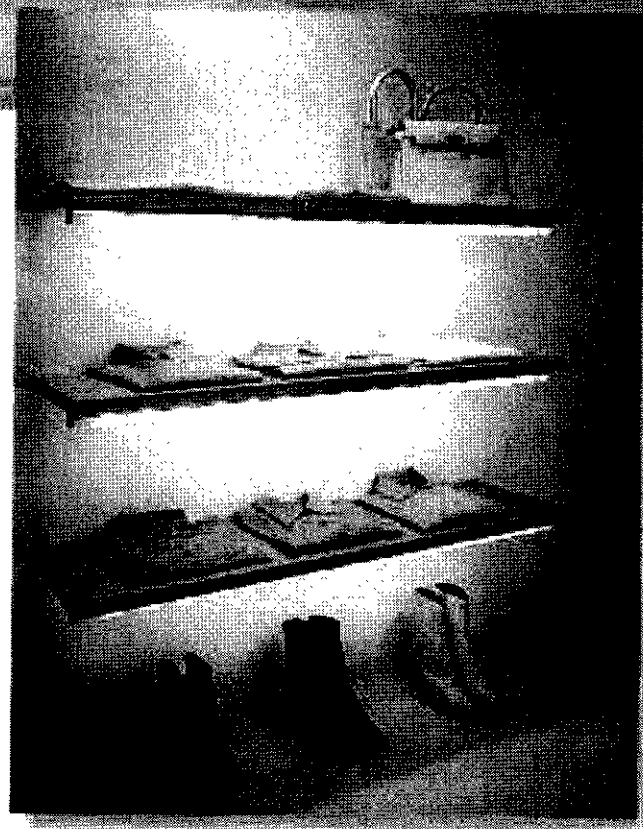
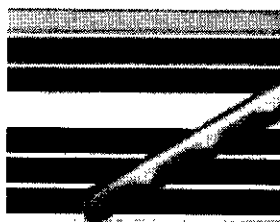


AV CHANNELS

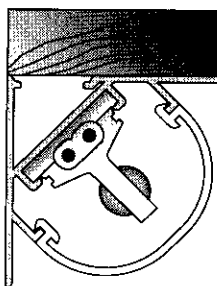
Tokistar's AV Channels are a perfect complement to our popular indirect lighting system. These aluminum profiles offer a convenient and attractive means to expand applications of Advantage in both concealed and exposed applications. A special snap-socket is supplied with Advantage when specified as an AV Channel System.



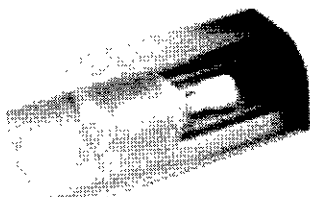
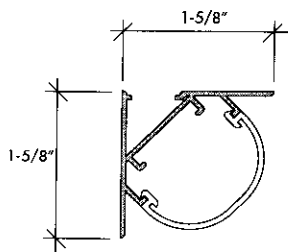
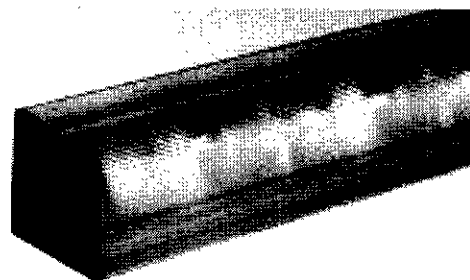
Optional lens covers may be specified to guard lamps from contact or add color. A kelvin-boosting lens is used to increase color temperature. Lens covers are for use with three and five watt lamps only.



AVL Series Channel



Attaches to the front edge of shelving, cabinetry, or anywhere a decorative fascia is required to conceal lamps and redirect light.



AVL Series End Caps

PART #	COLOR
AV-LEC-BK	BLACK
AV-LEC-WH	WHITE
AV-LEC-SV	SILVER

HOW TO SPECIFY

AV - LCH - SA - 4 - 101 - CL

CODE

LCH
CH

MODEL

With Fascia
Without Fascia

CODE

SA
WH
PA
PG

FINISH

Satin Aluminum
Powder-coat White
Polished Aluminum
Polished Gold

CODE

3
4
6

LAMP SPACING

3" O.C.
4" O.C.
6" O.C.

CODE

CL
WH
RD
BL
TL
GL
RS
LV
KB

LENS COVER COLOR

Clear
White
Red
Blue
Teal
Gold
Rose
Lavender
Kelvin Booster

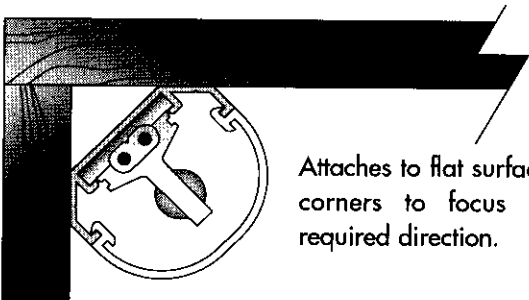
CODE

101
103

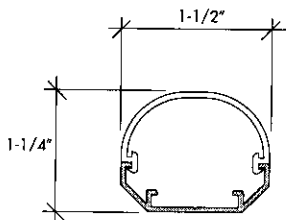
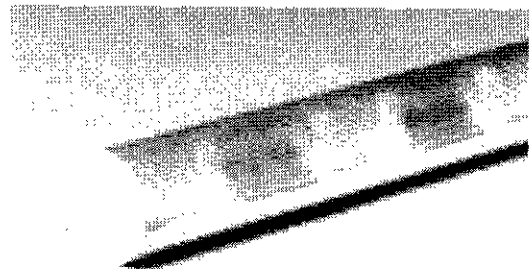
LAMP STYLE

5 WATT
3 WATT

AVC Series Channel



Attaches to flat surfaces, or in 90° corners to focus light in the required direction.



AVC Series End Caps

PART

AV-EC-BK
AV-EC-WH
AV-EC-SV

COLOR

BLACK
WHITE
SILVER

DEFINED SPECIFICATIONS



Material Specifications

- 24 Volt Xenon Lamps
- Aluminum Reflector
- Plated Copper Socket Contacts
- Fiber-Reinforced PBT Socket
Flame Rating 94V-0
- PVC Insulation Rated 105° C
- AWG #12 Plated/Stranded Conductors

Safety Certification

Advantage Lighting Systems are ETL Listed to United States and Canadian Standards. Additionally, they bear the CE mark for conformance to European Standards. Maximum fixture loads are not to exceed 20 amps (480 watts @ 24 Volts).



Heat Data

Fixtures

Light fixtures require adequate ventilation to dissipate heat.

In accordance with NEC/NFPA 70 Article 410-5:

"Fixtures shall be constructed, or installed, or equipped with shades or guards that combustible material will not be subjected to temperatures in excess of 90°C (194°F)."

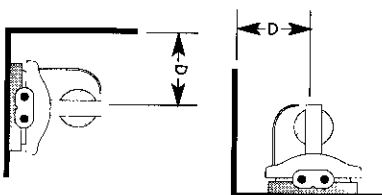
To conform to this standard, Advantage Lighting Systems should be installed according to the minimum space requirements shown below.

Transformers

Transformers should be installed in accessible areas where there is free circulation of air. Transformers should not be installed in locations with restricted air flow or high ambient temperatures.

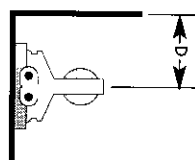
Results Using Asymmetrical Reflectors

WATTS	MINIMUM DISTANCE (D)
3	0.5"
5	0.5"
8.5	0.5"



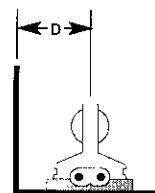
Results Using Basic System/Horizontal

WATTS	MINIMUM DISTANCE (D)
3	0.5"
5	1"
8.5	1.5"



Results Using Basic System/Vertical

WATTS	MINIMUM DISTANCE (D)
3	0.5"
5	0.5"
8.5	1"



Test Conditions Based Upon:

1. Ambient temperature of 30°C (86°F)
2. Minimum spacing of 2.4" for Basic System
3. Minimum spacing of 3" with Reflectors

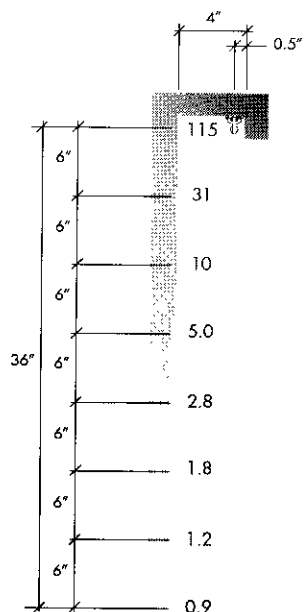


FOOTCANDLE SUMMARY

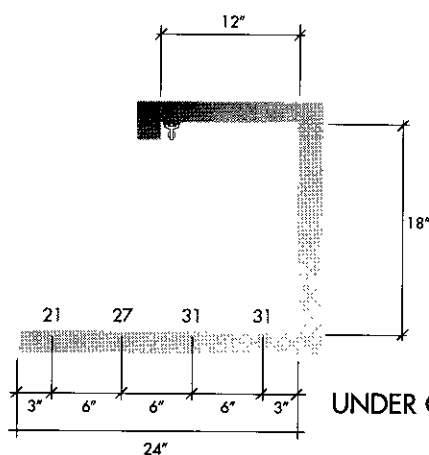
These sections show typical point-by-point footcandle values for three typical applications.

Reflectance for each is as follows:

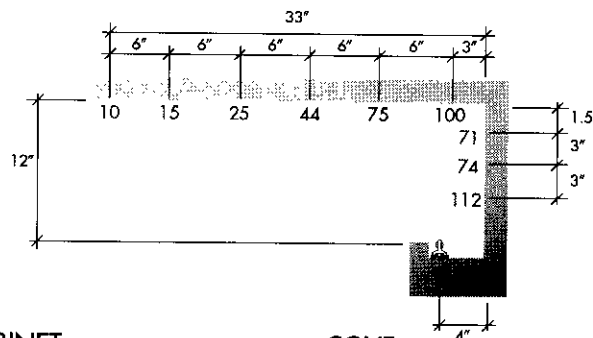
Overhang = 50%; Under cabinet = 50%; Cove = 80%



OVERHANG



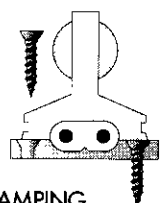
UNDER CABINET



COVE

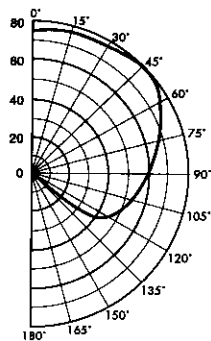
CANDELA DISTRIBUTION

CATALOG# AV-3-101



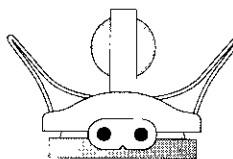
LAMPING

16 Ea. 5 Watt/40 Lumen
3" O.C. Spacing,
48" Total Length



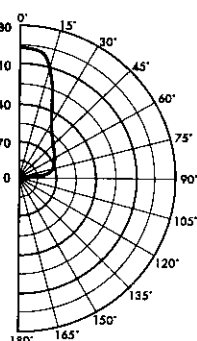
CANDELA DISTRIBUTION

CATALOG# AV-3-101-SR



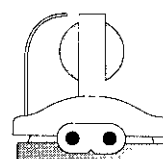
LAMPING

16 Ea. 5 Watt/40 Lumen
3" O.C. Spacing,
48" Total Length



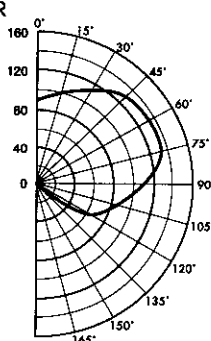
CANDELA DISTRIBUTION

CATALOG# AV-3-101-AR



LAMPING

16 Ea. 5 Watt/40 Lumen
3" O.C. Spacing,
48" Total Length



Conversion Factors

Lamp Wattage:

3.0 Watt, 12.5 Lumen Lamp (103), Multiply by 0.31

8.5 Watt, 85.0 Lumen Lamp (102), Multiply by 2.12

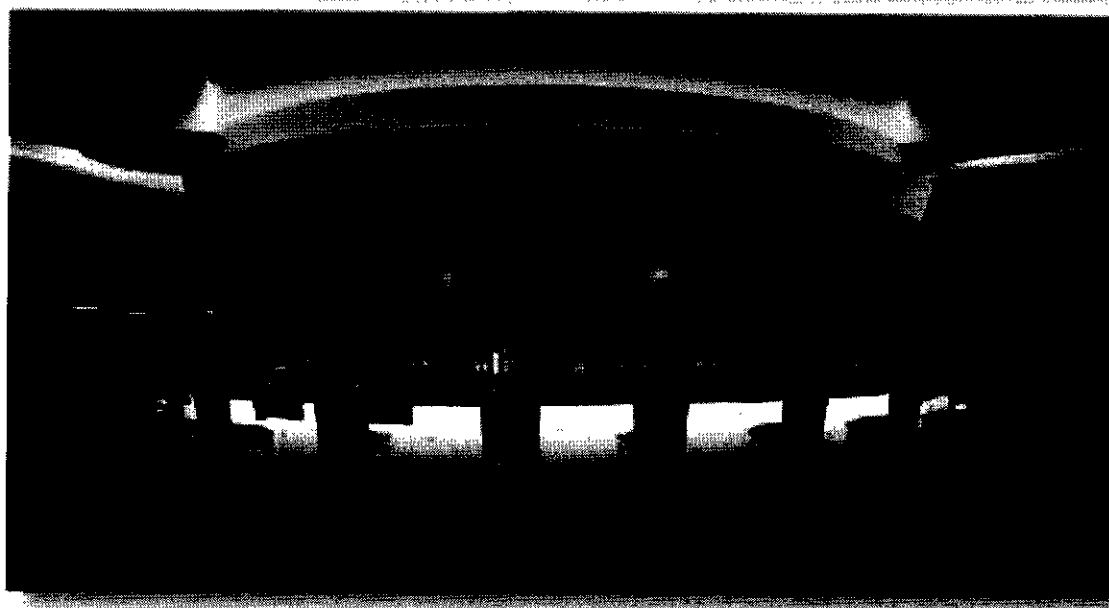
Lamp Spacing:

2.4" O.C., Multiply by 1.25

4.0" O.C., Multiply by 0.75

6.0" O.C., Multiply by 0.50

Photometrics by Lighting Research Laboratory, Orange, California.
Testing conducted in accordance with current IES published procedures.
IES formatted photometric data available on request.

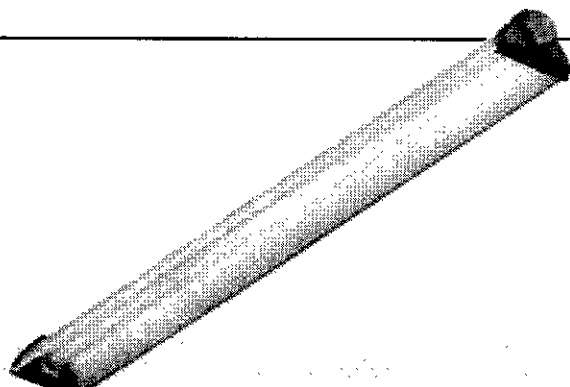


TOKISTAR LIGHTING™ INCORPORATED

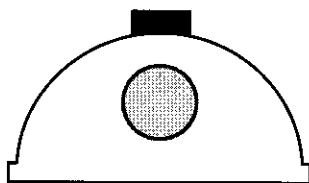
1561 N. Gemini Place, Anaheim, CA 92801 U.S.A.
Phone (714) 772-7005 • FAX (714) 772-7014 • Toll Free In The U.S.A. (877) 340-7633
e-mail: info@tokistar.com • Web: www.tokistar.com

FORECASTER SERIES

OUTDOOR, SIGN LIGHT



OUTDOOR SIGN LIGHT
SPECIALTY APPLICATION



1 LAMP

FEATURES

PRODUCT HIGHLIGHTS

- Heavy gauge, extruded aluminum, weatherproof housing
- Cast aluminum end caps
- Fixture can swivel 360°
- All hardware stainless steel
- Totally self-encapsulated weatherproof ballast for remote mounting in any location
- Perfect for signs, billboards, store fronts, service stations, walkways and parking areas

CONSTRUCTION

Anodized, extruded aluminum housing .062" thick. Heavy-gauge, die-cast aluminum ends screwed to housing. Die-cast aluminum junction boxes provided for continuous run or individual mounting.

SHIELDING

Clear, one-piece, extruded acrylic shield locks into a full-length groove. Stainless steel lens retaining brackets easily removed for re-lamping.

ELECTRICAL

All devices UL and CUL listed for wet and damp locations. Units accommodate either 800MA or 1500MA lamps.

FINISH

Reflective surface finished in high-gloss, baked, white, high reflectance enamel. Die-cast ends and junction boxes are natural aluminum.

PHOTOMETRIC DATA

For complete photometric data in IESNA format contact: www.lsi-midwest.com

ORDERING DATA

PREFIX	#LAMPS	LAMP DATA	BALLASTS	OPTIONS	VOLTAGE
FC	1	48 - 48" HO 48 - 48" 1500MA 72 - 72" HO 72 - 72" 1500MA 96 - 96" HO 96 - 96" 1500MA Note: For tandem configurations suffix above number with "-2"	HO - High Output 1500 - VHO - SHO - PG	UP-Uplight Mtg. (has weep holes in reflector for moisture)	120 - 120V 277 - 277V

EXAMPLE OF TYPICAL ORDER:

FC 1 48 HO 120

JOB APPROVAL INFORMATION

FIXTURE TYPE
CAT#



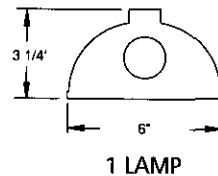
LSI MIDWEST LIGHTING
100 Funston Road • Kansas City, KS 66115
(913) 281-1100 • Fax (913) 281-1967
Customer Service (800) 743-5483

FORECASTER SERIES

OUTDOOR, SIGN LIGHT

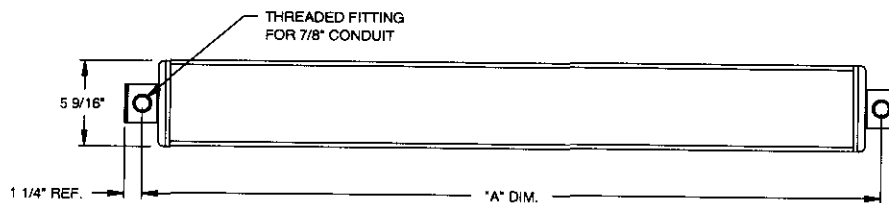
ENGINEERING DATA

END VIEW



1 LAMP

BACK PUNCHING

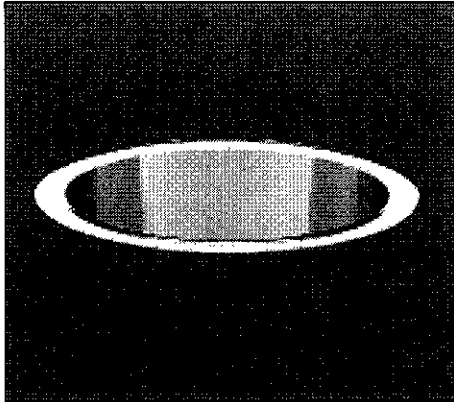


CATALOG NO.	"A" DIM.
FC-148HO, FC-148-1500	50 1/2"
FC-172HO, FC-172-1500	74 1/2"
FC-196HO, FC-196-1500	98 1/2"

CONDUIT MOUNTING
AT EACH END

AFV

Vertical Lamp



Intended Use

For general downlight applications that demand high efficiency and low aperture brightness.

Features

Optical System – Self-flanged, specular clear or semi-diffuse reflector or micro-groove baffle with patented Vertisys® optical design (U.S. Patent No. 5,800,050). Baffle flange painted white. Lamp is visible before reflected lamp image. Lamp image reflects smoothly from top of reflector to aperture. Brightness control and efficiency are optimally balanced. Controlled anodizing process suppresses iridescence.

Electrical System – Rugged aluminum socket housing. Vertically mounted, posi-

tive-latch, thermoplastic socket. Class P, thermally-protected, high-power factor ballast mounted to the junction box.

Mounting – 16-gauge galvanized steel mounting/plaster frame with thru-wire junction box. Expandable, self-locking mounting bars provide horizontal and vertical adjustment.

Listings – UL Listed. CSA Certified. UL listed for thru-branch wiring, recessed mounting and damp locations.

For product details and performance data, see the GOTHAM binder or the on-line catalog at www.lithonia.com.

Ordering Information

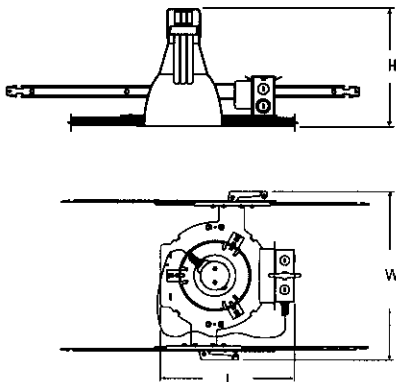
Example: AFV 26TRT 6AR 120

Series	Wattage/ lamp ¹	Aperture	Trim color	Finish	Options/ Accessories	Voltage
AFV		4 ³	AR Clear	(blank) Specular low iridescent		120
	9TT	5 ⁴	PR Pewter			277
	13TT	6	UBR Umber	LD Semi-diffuse low iridescent		347
	13DDT	8	WTR Wheat		CGL Clear glass lens	
	18DDT		CR Champagne gold ⁵		T73 Tempered prismatic lens	
	26DDT		GR Gold ⁵		CAL Clear acrylic lens	
	18TRT		WR White painted ⁶		A12 Prismatic acrylic lens	
	26TRT		MB Black microgroove baffle ⁶		PCL Clear polycarbonate lens	
	32TRT		WB White microgroove baffle ⁶		PPC Prismatic polycarbonate	
	42TRT ²					

NOTES:

- 1 Twin-Tube (TT); Double Twin-Tube (DDT); Triple-Tube (TRT).
- 2 Recommended for use in 8-inch aperture only.
- 3 Available in 13DDT, 18TRT and 26TRT.
- 4 Available in 18W, 26W and 32W TRT lamp only.
- 5 Not recommended for use with compact fluorescent lamps. Consult factory.
- 6 Not available with finishes.

Drawings for dimensional detail only. May not represent actual mechanical configuration. Dimensions are shown in inches (centimeters) unless otherwise noted.



ORDERING/PACKAGING OPTIONS – To accommodate the product's physical configuration as well as a range of customer handling and processing needs, two alternative ordering/packaging methods are available.

1) Standard Packaging (optimized form)

To order, use a single master catalog number.

Example: (13) AFV 26TRT 6AR 120

Fixtures ship as multiple components using optimized packaging. Example above ships as:

- (Qty 13) AFV 26TRT 6 120 HSG (13 housing cartons)
 (Qty 12) AFV 6AR TRT TRIM J4 (3 cartons of 4 reflectors)
 (Qty 1) AFV 6AR TRT TRIM U (1 carton of 1 reflector)

NOTES:

- 1 13W DTT utilizes TRT trim. 42W TRT utilizes TT/DDT trim.
- 2 When TT or DTT trim is required, omit TRT from trim breakout. Example: AFV 6AR TRIM U.

2) Component Packaging

Order housings as unit pack, order trims as J4 or unit pack as per component order guide listed below.

Housing Only:

AFV wattage, lamp type, aperture, voltage, options, HSG

Trim Only:

AFV aperture, trim color, finish, TRT², TRIM U or J4

Catalog No.	Lamp	Height (H)	Length (L)	Width (W)	Aperture	Ceiling Opening	Overlap Trim
AFV 4	DDT, TRT	9-3/8 (23.3)	13 (33)	15-7/8 (40.3)	4-5/16 (11)	5-1/8 (13)	5-7/16 (13.8)
AFV 5	TRT	9-1/16 (23.0)	13-1/8 (33.3)	13-13/16 (35.1)	5 (12.7)	5-5/8 (14.3)	6-1/4 (15.9)
AFV5 MB	TRT	8-15/16 (22.7)	13-1/8 (33.3)	13-13/16 (35.1)	4-3/4 (12.1)	5-5/8 (14.3)	6-1/4 (15.9)
AFV 6	TT, DDT	10-13/16 (27.5)	12-15/16 (32.9)	15-13/16 (40.2)	6-1/4 (15.9)	6-7/8 (17.5)	7-1/2 (19.1)
AFV6 MB	TT, DDT	10-11/16 (27.1)	12-15/16 (32.9)	15-13/16 (40.2)	6-1/8 (15.6)	6-7/8 (17.5)	7-1/2 (19.1)
AFV 6	13DDT, TRT	9-5/8 (24.4)	12-15/16 (32.9)	15-13/16 (40.2)	6-1/4 (15.9)	6-7/8 (17.5)	7-1/2 (19.1)
AFV6 MB	13DDT, TRT	9-1/2 (24.1)	12-15/16 (32.9)	15-13/16 (40.2)	6-1/8 (15.6)	6-7/8 (17.5)	7-1/2 (19.1)
AFV8	TT, DDT, 42TRT	11-1/2 (29.2)	14 (35.6)	15-13/16 (40.2)	7-7/8 (20.1)	8-1/2 (21.6)	9-1/8 (23.2)
AFV8 MB	TT, DDT, 42TRT	11-1/2 (28.9)	14 (35.6)	15-13/16 (40.2)	7-3/4 (19.8)	8-1/2 (21.6)	9-1/4 (23.5)
AFV8	13DDT, TRT	10-5/16 (26.2)	14 (35.6)	15-13/16 (40.2)	7-7/8 (20.1)	8-1/2 (21.6)	9-1/8 (23.2)
AFV8 MB	13DDT, TRT	10-1/4 (26.0)	14 (35.6)	15-13/16 (40.2)	7-3/4 (19.8)	8-1/2 (21.6)	9-1/4 (23.5)