

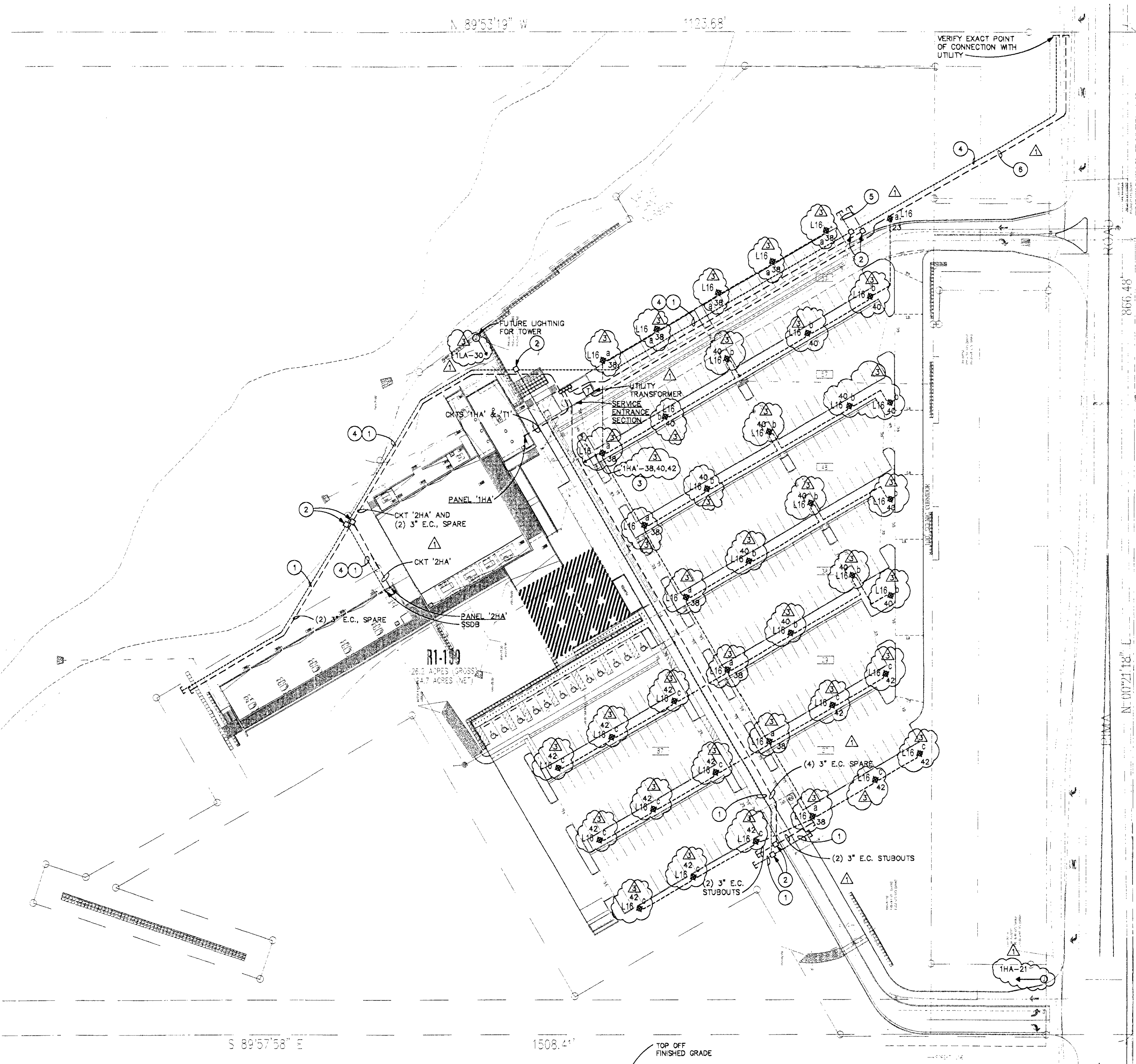
GENERAL NOTES

1. CONDUIT LAYOUTS SHOWN ON THE PLANS ARE DIAGRAMMATIC, NOT INDICATING THE ROUTING REQUIRED. THE CONTRACTOR SHALL ROUTE CONDUITS AS REQUIRED BY THE CONDITIONS OF INSTALLATION.
2. ALL ELECTRICAL EQUIPMENT PROVIDED BY THE ELECTRICAL CONTRACTOR SHALL BE LISTED BY A NATIONALLY-RECOGNIZED TESTING AGENCY, ACCEPTABLE TO THE AUTHORITY HAVING JURISDICTION, FOR THE CONDITIONS OF INSTALLATION.
3. DEVICE LOCATIONS SHOWN ON THE PLANS ARE APPROXIMATE. EXACT DEVICE LOCATIONS SHALL BE AS INDICATED ON THE ARCHITECTURAL PLANS OR AS DIMENSIONED ON THE INTERIOR DESIGN PLANS.
4. PLANS SHOW THE NUMBER OF PHASE AND NEUTRAL CONDUCTORS WHERE MORE THAN TWO CONDUCTORS ARE TO BE INSTALLED IN A CONDUIT (TWO OR LESS CONDUCTORS ARE NOT SHOWN). A GROUND CONDUCTOR, NOT SHOWN, SHALL BE INSTALLED IN EACH CONDUIT RUN AND SHALL BE SIZED PER THE NEC. ADDITIONAL CONDUCTORS REQUIRED FOR CONTROL SHALL BE INCLUDED EVEN IF NOT EXPLICITLY SHOWN.
5. UNLESS SPECIFICALLY NOTED OTHERWISE, THE ELECTRICAL CONTRACTOR SHALL MAKE FINAL CONNECTIONS TO ALL UTILIZATION EQUIPMENT SHOWN ON THE PLANS. VERIFY THE TYPE OF FINAL CONNECTION AND PROVIDE APPROPRIATE WIRING METHOD.
6. THE ELECTRICAL CONTRACTOR SHALL COORDINATE WITH THE MECHANICAL AND PLUMBING CONTRACTORS, PRIOR TO THE ORDERING OR INSTALLATION OF ANY EQUIPMENT, TO VERIFY MECHANICAL AND PLUMBING EQUIPMENT REQUIREMENTS ARE PROVIDED BY THE ELECTRICAL DESIGN. THE CONTRACTOR WILL NOT BE COMPENSATED FOR COSTS ASSOCIATED WITH CHANGING THE ELECTRICAL SYSTEMS TO MATCH MECHANICAL OR PLUMBING EQUIPMENT, EVEN IF THE ELECTRICAL WORK IS INSTALLED PER THE ELECTRICAL PLANS.
7. THE CONTRACTOR SHALL PROVIDE A COPY OF INSTALLATION INSTRUCTIONS FOR EACH MAJOR PIECE OF ELECTRICAL EQUIPMENT IDENTIFIED BELOW, PRIOR TO INSTALLATION OF THE EQUIPMENT, TO THE ELECTRICAL ENGINEER FOR REVIEW.
8. UNLESS SPECIFICALLY NOTED OTHERWISE, SYSTEMS PROVIDED OR INSTALLED BY THE ELECTRICAL CONTRACTOR SHALL BE COMPLETE AND FULLY FUNCTIONING AFTER INSTALLATION. COMPONENTS NOT SHOWN, BUT REQUIRED FOR PROPER FUNCTION OF THE EQUIPMENT OR SYSTEM, SHALL BE PROVIDED AT NO ADDITIONAL COST TO THE PROJECT.
9. THE CONTRACTOR SHALL PERFORM ALL ACCEPTANCE TESTS REQUIRED OR RECOMMENDED BY EQUIPMENT MANUFACTURERS. THE CONTRACTOR SHALL NOTIFY THE ENGINEER SEVEN (7) DAYS PRIOR TO PERFORMANCE OF ANY TESTING AND SHALL ALLOW OBSERVATION OF THE TESTING IF DESIRED BY THE ENGINEER.
10. THE CONTRACTOR SHALL OBTAIN STORAGE INSTRUCTIONS, FROM THE MANUFACTURER, FOR MAJOR PIECES OF ELECTRICAL EQUIPMENT IDENTIFIED BELOW. THE CONTRACTOR SHALL PROVIDE COPIES OF THESE INSTRUCTIONS TO THE ENGINEER PRIOR TO ARRIVAL OF THE EQUIPMENT ON SITE.
11. COMPLY WITH APPLICABLE REQUIREMENTS OF ANSI C2 (ELECTRICAL SAFETY CODE) AND NFPA (NATIONAL ELECTRIC CODE).
12. COMPLY WITH APPLICABLE REQUIREMENTS OF CITY OR MUNICIPALITY CONSTRUCTION CODE, INCLUDING MODIFICATIONS AND SUPPLEMENTS TO ANSI C2 AND NFPA.
13. ALL RECEPTACLES WITHIN 6' OF A SINK SHALL BE GFCI PROTECTED.
14. UNLESS OTHERWISE NOTED, ALL EQUIPMENT DISCONNECTS SHALL BE HEAVY DUTY NEMA 3R, 30A, 3 POLE, FUSIBLE TYPE. FUSE PER EQUIPMENT MANUFACTURER'S INSTALLATION INSTRUCTIONS.
15. DEVICE BOXES SHOWN 'BACK-TO-BACK' SHALL BE OFFSET A MINIMUM OF 12" TO PREVENT SOUND TRANSMISSION BETWEEN ROOMS.
16. ALL PENETRATIONS IN WALLS SHALL BE SEALED WITH FLEXIBLE ACOUSTIC CAULKING. CAULKING SHALL BE APPLIED AROUND OUTLET BOXES TO PROVIDE A COMPLETE SEAL BETWEEN THE BOX AND THE WALL.
17. PRIOR TO CONDUIT AND WIRE INSTALLATION OF ANY EQUIPMENT (INCLUDING HVAC EQUIPMENT), VERIFY NAME PLATE VOLTAGE, FLA, HP, KW, MINIMUM CIRCUIT AMPACITY AND ANY OTHER ELECTRICAL LOAD INFORMATION. REPORT ANY DISCREPANCIES IMMEDIATELY TO ARCHITECT/ENGINEER FOR BRANCH CIRCUITING AND OVER CURRENT PROTECTION DEVICE MODIFICATION.
18. VERIFY EXACT LOCATION, MOUNTING HEIGHT AND ELECTRICAL REQUIREMENTS OF ALL EQUIPMENT PROVIDED BY OTHERS (INCLUDING HVAC AND PLUMBING EQUIPMENT) PRIOR TO ROUGH-IN AND ORDERING. PROVIDE ALL REQUIRED AND NECESSARY WIRES, DISCONNECT SWITCHES (FUSIBLE AND NON-FUSIBLE), TRANSFORMERS, MOTOR STARTERS, SWITCHES, RECEPTACLES FOR PROPER OPERATION OF THE EQUIPMENT.
19. REFER TO ARCHITECTURAL/INTERIOR ELEVATIONS AND DETAILS FOR RECEPTACLE MOUNTING HEIGHTS.
20. CONDUCTORS FOR BRANCH CIRCUIT WIRING SHALL BE MINIMUM NO. 12 AWG. BRANCH CIRCUIT WIRING EXCEEDING 100 FEET AT 120 VOLTS SHALL BE MINIMUM 10 AWG. BRANCH CIRCUIT WIRING EXCEEDING 200 FEET AT 277 VOLTS AND ABOVE SHALL BE MINIMUM NO. 10 AWG.
21. COMPLY WITH APPLICABLE REQUIREMENTS OF U.S. DEPARTMENT OF LABOR AND OCCUPATIONAL HEALTH ADMINISTRATION STANDARDS (OSHA).
22. IN ADDITION TO THE SPECIFIED AND INDICATED PERFORMANCE AND QUALITY REQUIREMENTS, FURNISH PRODUCTS AND PERFORM INSTALLATION WORK CONSISTENT WITH THE DESIGN INTENT AND NECESSARY TO THE PROVISIONS OF COMPLETE OPERATING ELECTRICAL SYSTEMS.

ELECTRICAL SYMBOLS

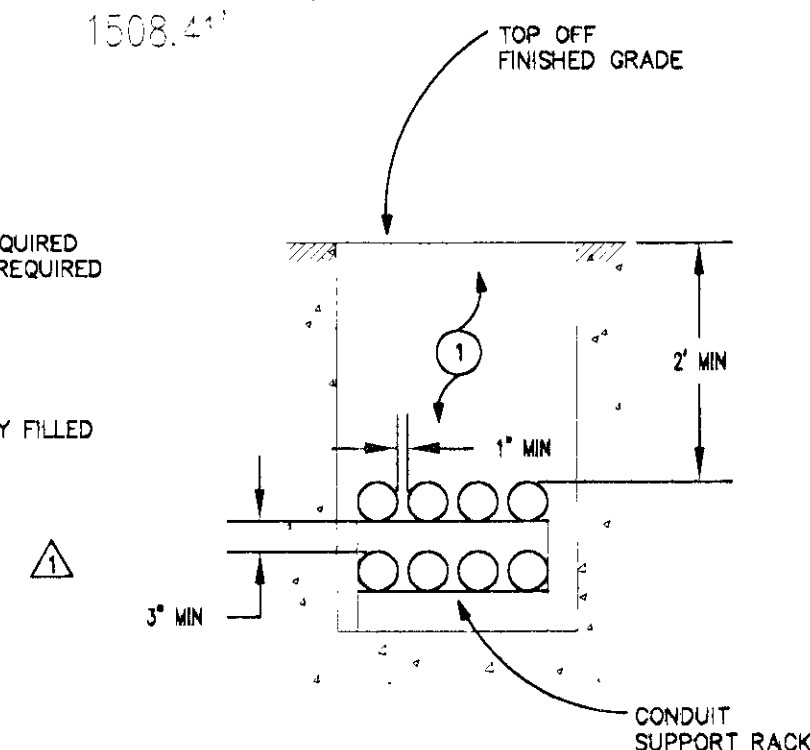
- (NOT ALL SYMBOLS MAY BE USED.)
- INCADESCENT, FLUORESCENT OR 'H.I.D.' LIGHT FIXTURE, CAP LETTER DENOTES FIXTURE DESCRIBED IN FIXTURE SCHEDULE, NUMBER DENOTES CIRCUIT ASSIGNMENT, LOWER CASE LETTER DENOTES SWITCH LEG.
- FLUORESCENT FIXTURE WITH 2-LAMP ON EMERGENCY CIRCUITING, (SWITCHED)
- INCADESCENT, FLUORESCENT OR 'H.I.D.' LIGHT FIXTURE, CEILING RECESSED OR PENDANT MOUNTED.
- INCADESCENT, FLUORESCENT OR 'H.I.D.' LIGHT FIXTURE, WALL MOUNTED.
- EMERGENCY EXIT SIGN, SHADED PORTION INDICATES LIGHT FACE. (DIRECTIONAL ARROWS AS INDICATED ON PLAN). SEE FIXTURE SCHEDULE. (NOT SWITCHED)
- INCADESCENT, FLUORESCENT OR 'H.I.D.' LIGHT FIXTURE ON EMERGENCY CIRCUITING. (SWITCHES)
- 20A., 1P., SINGLE THROW SWITCH, (TRANSCRIPT DENOTES CONTROLLED CIRCUIT LEG), MOUNT AT +42" A.F.F.
- 3-WAY, 20A., SINGLE POLE, DOUBLE THROW SWITCH, MOUNT AT +42" A.F.F. U.N.O.
- 20A., 1P., SINGLE THROW SWITCH, WITH PILOT LIGHT, MOUNT AT 42" A.F.F. U.N.O.
- 20A., 1P., SINGLE THROW SWITCH, KEY OPERATED, MOUNT AT 42" A.F.F. U.N.O.
- MANUAL DIMMER SWITCH, 2000 VA OR AS NOTED, MOUNT AT 42" A.F.F. U.N.O.
- MANUAL MOTOR STARTER WITH SWITCH CONTROL AND THERMAL OVERLOADS, VOLTAGE AND POLES AS REQUIRED.
- WALL MOUNTED DUPLEX RECEPTACLE OUTLET, 20A., 150V., 3-WIRE GROUNDED, NEMA 5-20R, MOUNT AT +18" A.F.F. U.N.O.
- WALL MOUNTED DUPLEX RECEPTACLE NEMA 20-5R 150V., 3-WIRE GROUNDED, MOUNTED HORIZONTALLY AT +4" ABOVE COUNTER BACKSPASH, OR AS REQUIRED BY INSTALLATION (REFER TO ARCHITECTURAL ELEVATIONS FOR MOUNTING REQUIREMENTS).
- WALL MOUNTED DOUBLE DUPLEX RECEPTACLE OUTLET WITH (2) 20A., 150V., 3-WIRE, GROUNDED NEMA 5-20R, MOUNTED AT +18" A.F.F. U.N.O., OR AS REQUIRED BY INSTALLATION.
- SPECIAL PURPOSE RECEPTACLE, VOLTAGE AND RATED AMPACITY AS INDICATED ON THE ANS.
- JUNCTION BOX WITH FLEX CONNECTION OR PULL BOX AS REQUIRED.
- HOMERUN TO PANELBOARD OR AS NOTED.
- CONDUIT CONCEALED IN WALL OR ABOVE CEILING.
- CONDUIT ROUTED UNDERGROUND OR UNDER FLOOR SLAB.
- SHORT LINES INDICATE PHASE CONDUCTORS, LONG LINES INDICATE NEUTRAL CONDUCTORS.
- PANELBOARD, FLUSH MOUNTED, PROVIDE (2) 3/4" SPARE CONDUITS STUBBED INTO ACCESSIBLE CEILING SPACE.
- PANELBOARD, SURFACE MOUNTED.
- MOTOR (H.P., VOLTAGE AND PHASE AS NOTED)
- SAFETY DISCONNECT SWITCH WITH FUSES PER MANUFACTURER'S RECOMMENDATIONS, (H.P. OR AMPACITY, VOLTAGE, NUMBER OF POLES AS INDICATED ON PLAN). N.F. INDICATES NON-FUSED.
- INDICATES MECHANICAL EQUIPMENT DESIGNATION, REFER TO MECHANICAL DRAWINGS FOR FURTHER INFORMATION.
- VOICE AND DATA OUTLET, MOUNTED AT +18" A.F.F. U.N.O. PROVIDE SPACE U.N.O.
- FLOOR BOX FLUSH MOUNTED IN FLOOR BOX COMPLETE WITH DUPLEX RECEPTACLE (20A., 125V., 3P., GROUNDED) NEMA 5-20R COMPLETE WITH CARPET FLANGE IN CARPETED AREAS. STEEL CITY #664-CST.

- FIRE ALARM SYMBOLS
- MANUAL PULL STATION, MOUNT AT +48" A.F.F.
- SPEAKER/STROBE, MOUNT AT +80" A.F.F.
- STROBE, MOUNT AT +80" A.F.F.
- PHOTOELECTRIC SMOKE DETECTOR, CEILING MOUNTED.
- DUCT DETECTOR, FURNISH AND CONNECTED BY ELECTRICAL, MOUNTED BY MECHANICAL.
- BEAM DETECTOR, MOUNT AT +80" A.F.F.
- HEAT DETECTOR, CEILING MOUNTED.
- MAGNETIC DOOR HOLDER.
- FIRE ALARM CONTROL PANEL.
- FIRE ALARM ANNUNCIATOR PANEL.
- FLOW SWITCH
- TAMPER SWITCH
- VIDEO INPUT
- SPEAKER
- WALL MTD. SPEAKER
- SPECIAL SYSTEMS DISTRIBUTION BOARD



- NOTES
1. WIDTH OF TRENCH AS REQUIRED
2. # OF CONDUIT ROWS AS REQUIRED

- KEY NOTES
1. TRENCH TO BE SLURRY FILLED



TRENCH DETAILS

N.T.S.

KEY NOTES

1. (4) 2" COMMUNICATION CONDUIT.
2. PROVIDE PRECAST UNDERGROUND PULL BOX FOR COMMUNICATION OR POWER SYSTEMS, 4'x4'x4", "PRECAST", EL444.
3. 3/8, 1/8" GROUND, 1"O. THROUGH OUT
4. (2) 3" FOR TELECO AND CATV FROM UTILITY COMPANY. VERIFY EXACT REQUIREMENTS AND LOCATIONS.
5. (2) 2" STUBOUTS FOR FUTURE.

E1.0

electrical site plan

1" = 50'-0"

scottsdale first assembly

DREAM CENTER

28700 north pima road
scottsdale, arizona

APN: 216-70-008

25 JUNE 2004

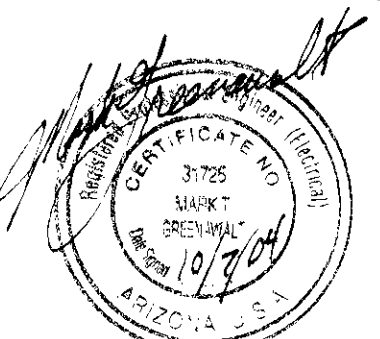
copyright 2004
0142

DeBARTOLO architects

4450 north twelfth street
number 268
phoenix, arizona 85014
tel 602.264.6617
fax 602.264.0891

sullivan designs incorporated

7878 north 16th street
suite 270
phoenix, arizona 85020
tel 602.943.8424
fax 602.943.7931
sdi proj. # 22106



- Q.C. REVIEW 9/03/04
- CITY COMMENTS 7-07-04
- OWNER REVISIONS 7-07-04
- DRB case plan check
- 36.DR.2003 4642.01.3

1 electrical site plan
E1.0 SCALE: 1" = 50'-0"