

SIGHTLINE INFORMATION WORKSHEET

PROJECT: Scottsdale North

date: 3/20/00

ROOF TOP UNITS

9000.001.00

Siteline #A to RTU-21	Ft
FFE	2,252.00
Parapet from FFE	25.33
Datum Parapet	2,277.33
Joist bearing	21.12
Deck+insul.	0.25
RTU+curb	4.17
RTU Ht	2,277.54
Viewpoint elevation	2,232.00
Viewpoint ht to Parapet ht	45.33
Viewpoint ht to RTU ht	45.54
Distance viewpoint to parapet	1,030.00
Distance viewpoint to RTU	1,110.00
X	48.85
Amount visible over parapet (ft)	-3.31
Visibility in inches	0

Siteline #A to RTU-22	Ft
FFE	2,252.00
Parapet from FFE	25.33
Datum Parapet	2,277.33
Joist bearing	21.12
Deck+insul.	0.25
RTU+curb	4.17
RTU Ht	2,277.54
Viewpoint elevation	2,232.00
Viewpoint ht to Parapet ht	45.33
Viewpoint ht to RTU ht	45.54
Distance viewpoint to parapet	1,042.00
Distance viewpoint to RTU	1,125.00
X	48.94
Amount visible over parapet (ft)	-3.40
Visibility in inches	0

Siteline #A to RTU-9	Ft
FFE	2,252.00
Parapet from FFE	25.33
Datum Parapet	2,277.33
Joist bearing	21.00
Deck+insul.	0.25
RTU+curb	4.92
RTU Ht per field	2,278.17
Viewpoint elevation	2,232.00
Viewpoint ht to Parapet ht	45.33
Viewpoint ht to RTU ht	46.17
Distance viewpoint to parapet	1,025.00
Distance viewpoint to RTU	1,130.00
X	49.97
Amount visible over parapet (ft)	-3.80
Visibility in inches	0

Siteline #A to RTU-20	Ft
FFE	2,252.00
Parapet from FFE	24.00
Datum Parapet	2,276.00
Joist bearing	21.12
Deck+insul.	0.25
RTU+curb	4.17
RTU Ht	2,277.54
Viewpoint elevation	2,232.00
Viewpoint ht to Parapet ht	44.00
Viewpoint ht to RTU ht	45.54
Distance viewpoint to parapet	1,050.00
Distance viewpoint to RTU	1,145.00
X	47.98
Amount visible over parapet (ft)	-2.44
Visibility in inches	0

Visibility is calculated by similar triangles.
 Assuming no construction and/or landscaping between viewpoint and Target.
 Visibility beyond indicated points has not been reviewed.

SIGHTLINE INFORMATION WORKSHEET	ROOF TOP UNITS
PROJECT: Scottsdale North	9000.001.00
date: 3/20/00	

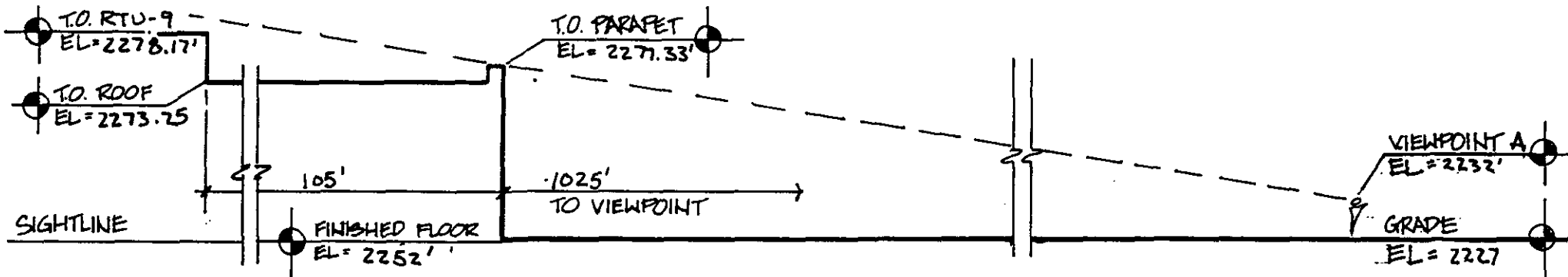
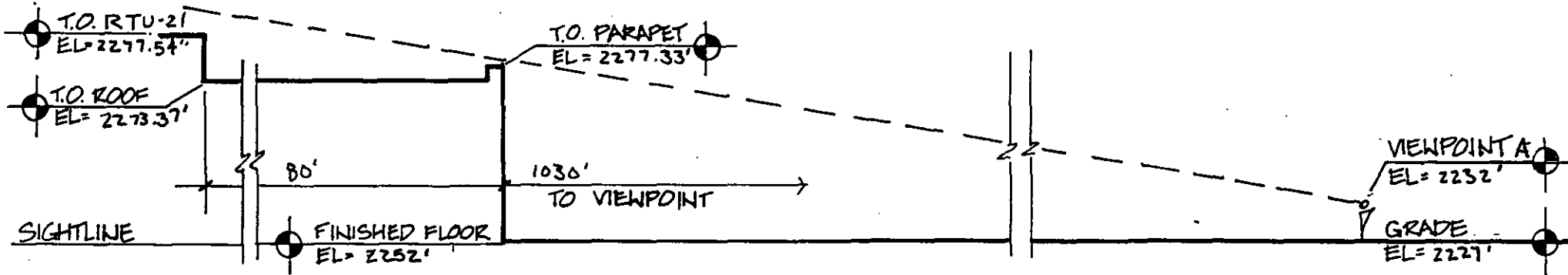
Siteline #A to RTU-4	Ft
FFE	2,252.00
Parapet from FFE	24.00
Datum Parapet	2,276.00
Joist bearing	21.12
Deck+insul.	0.25
RTU+curb	4.17
RTU Ht	2,277.54
Viewpoint elevation	2,232.00
Viewpoint ht to Parapet ht	44.00
Viewpoint ht to RTU ht	45.54
Distance viewpoint to parapet	1,080.00
Distance viewpoint to RTU	1,165.00
X	47.46
Amount visible over parapet (ft)	-1.92
Visibility in inches	0

Siteline #A to RTU-8	Ft
FFE	2,252.00
Parapet from FFE	24.00
Datum Parapet	2,276.00
Joist bearing	20.90
Deck+insul.	0.25
RTU+curb	4.92
RTU Ht	2,278.07
Viewpoint elevation	2,232.00
Viewpoint ht to Parapet ht	44.00
Viewpoint ht to RTU ht	46.07
Distance viewpoint to parapet	1,078.00
Distance viewpoint to RTU	1,185.00
X	48.37
Amount visible over parapet (ft)	-2.30
Visibility in inches	0

Siteline #A to RTU-3	Ft
FFE	2,252.00
Parapet from FFE	24.00
Datum Parapet	2,276.00
Joist bearing	21.09
Deck+insul.	0.25
RTU+curb	4.17
RTU Ht per field	2,277.51
Viewpoint elevation	2,232.00
Viewpoint ht to Parapet ht	44.00
Viewpoint ht to RTU ht	45.51
Distance viewpoint to parapet	1,095.00
Distance viewpoint to RTU	1,185.00
X	47.62
Amount visible over parapet (ft)	-2.11
Visibility in inches	0

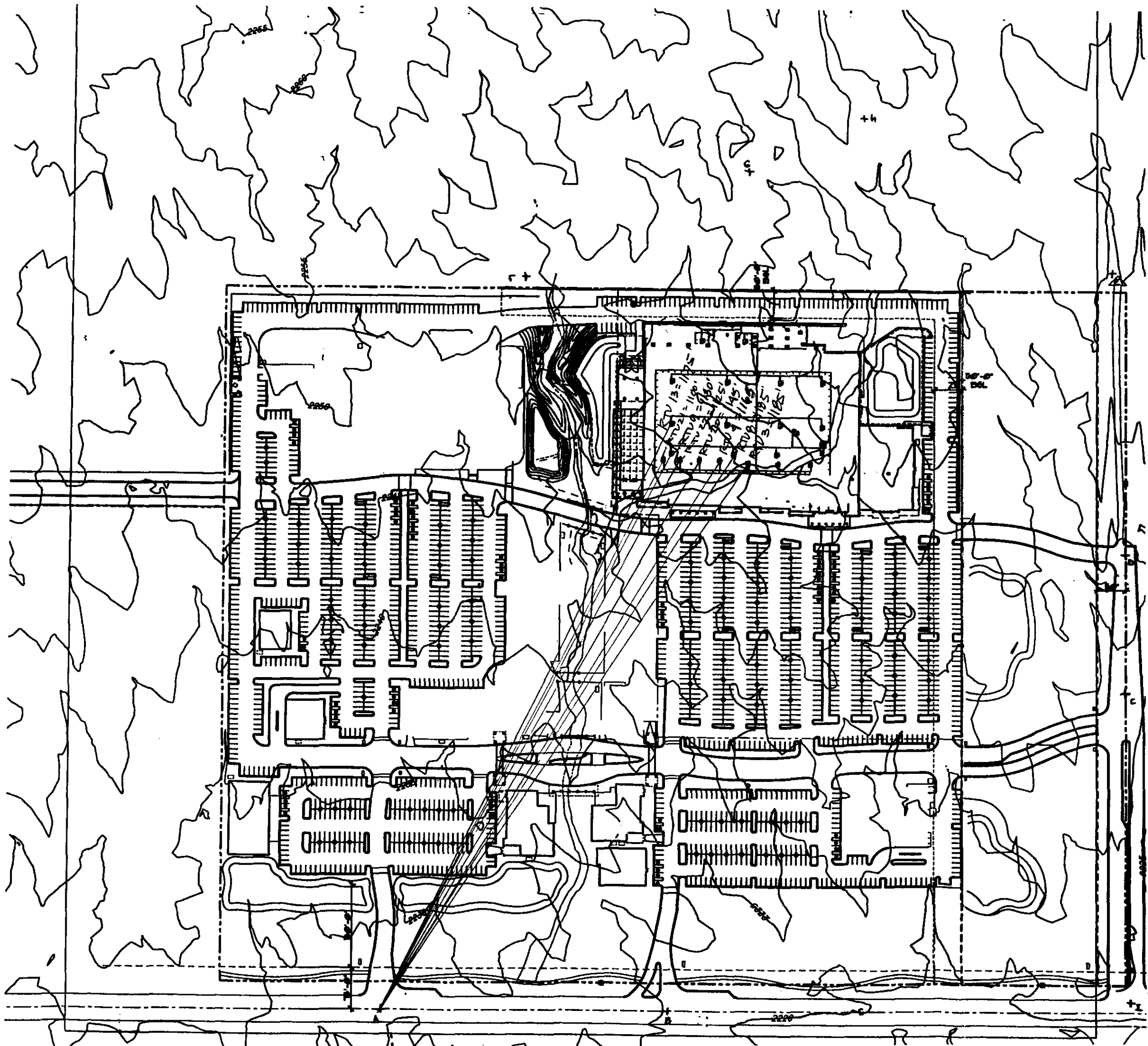
Siteline #A to RTU-13	Ft
FFE	2,252.00
Parapet from FFE	25.33
Datum Parapet	2,277.33
Joist bearing	20.31
Deck+insul.	0.25
RTU+curb	4.92
RTU Ht	2,277.48
Viewpoint elevation	2,232.00
Viewpoint ht to Parapet ht	45.33
Viewpoint ht to RTU ht	45.48
Distance viewpoint to parapet	1,060.00
Distance viewpoint to RTU	1,175.00
X	50.25
Amount visible over parapet (ft)	-4.77
Visibility in inches	0

Visibility is calculated by similar triangles.
 Assuming no construction and/or landscaping between viewpoint and Target.
 Visibility beyond indicated points has not been reviewed.



SIGHTLINE CALCULATIONS
 T-1327 Far North Scottsdale

RSP + SLL
 RSP Architects, Ltd. in association with
 Seaw Leach & Lindstrom, Inc.
 Architects • Engineers • Planners
 120 First Avenue North
 Minneapolis, Minnesota 55401
 FAX 612-338-6780
 612-338-0313



SITELINE A
EL=2,277'

SIGHTLINE INFORMATION WORKSHEET	ROOF TOP UNITS
PROJECT: Scottsdale North	9000.001.00
date: 3/20/00	

Siteline #B to RTU-21	Ft
FFE	2,252.00
Parapet from FFE	25.33
Datum Parapet	2,277.33
Joist bearing	21.12
Deck+insul.	0.25
RTU+curb	4.17
RTU Ht	2,277.54
Viewpoint elevation	2,229.00
Viewpoint ht to Parapet ht	48.33
Viewpoint ht to RTU ht	48.54
Distance viewpoint to parapet	910.00
Distance viewpoint to RTU	990.00
X	52.58
Amount visible over parapet (ft)	-4.04
Visibility in inches	0

Siteline #B to RTU-22	Ft
FFE	2,252.00
Parapet from FFE	25.33
Datum Parapet	2,277.33
Joist bearing	21.12
Deck+insul.	0.25
RTU+curb	4.17
RTU Ht	2,277.54
Viewpoint elevation	2,229.00
Viewpoint ht to Parapet ht	48.33
Viewpoint ht to RTU ht	48.54
Distance viewpoint to parapet	910.00
Distance viewpoint to RTU	990.00
X	52.58
Amount visible over parapet (ft)	-4.04
Visibility in inches	0

Siteline #B to RTU-9	Ft
FFE	2,252.00
Parapet from FFE	24.00
Datum Parapet	2,276.00
Joist bearing	21.00
Deck+insul.	0.25
RTU+curb	4.92
RTU Ht per field	2,278.17
Viewpoint elevation	2,229.00
Viewpoint ht to Parapet ht	47.00
Viewpoint ht to RTU ht	49.17
Distance viewpoint to parapet	910.00
Distance viewpoint to RTU	1,005.00
X	51.91
Amount visible over parapet (ft)	-2.74
Visibility in inches	0

Siteline #B to RTU-20	Ft
FFE	2,252.00
Parapet from FFE	24.00
Datum Parapet	2,276.00
Joist bearing	21.12
Deck+insul.	0.25
RTU+curb	4.17
RTU Ht	2,277.54
Viewpoint elevation	2,229.00
Viewpoint ht to Parapet ht	47.00
Viewpoint ht to RTU ht	48.54
Distance viewpoint to parapet	912.00
Distance viewpoint to RTU	995.00
X	51.28
Amount visible over parapet (ft)	-2.74
Visibility in inches	0

Visibility is calculated by similar triangles.
 Assuming no construction and/or landscaping between viewpoint and Target.
 Visibility beyond indicated points has not been reviewed.

SIGHTLINE INFORMATION WORKSHEET

PROJECT: Scottsdale North

date: 3/20/00

ROOF TOP UNITS

9000.001.00

Siteline #B to RTU-4	Ft
FFE	2,252.00
Parapet from FFE	24.00
Datum Parapet	2,276.00
Joist bearing	21.12
Deck+insul.	0.25
RTU+curb	4.17
RTU Ht	2,277.54
Viewpoint elevation	2,229.00
Viewpoint ht to Parapet ht	47.00
Viewpoint ht to RTU ht	48.54
Distance viewpoint to parapet	915.00
Distance viewpoint to RTU	995.00
X	51.11
Amount visible over parapet (ft)	-2.57
Visibility in inches	0

Siteline #B to RTU-8	Ft
FFE	2,252.00
Parapet from FFE	24.00
Datum Parapet	2,276.00
Joist bearing	20.90
Deck+insul.	0.25
RTU+curb	4.92
RTU Ht	2,278.07
Viewpoint elevation	2,229.00
Viewpoint ht to Parapet ht	47.00
Viewpoint ht to RTU ht	49.07
Distance viewpoint to parapet	912.00
Distance viewpoint to RTU	1,005.00
X	51.79
Amount visible over parapet (ft)	-2.72
Visibility in inches	0

Siteline #B to RTU-3	Ft
FFE	2,252.00
Parapet from FFE	24.00
Datum Parapet	2,276.00
Joist bearing	21.09
Deck+insul.	0.25
RTU+curb	4.17
RTU Ht per field	2,277.51
Viewpoint elevation	2,229.00
Viewpoint ht to Parapet ht	47.00
Viewpoint ht to RTU ht	48.51
Distance viewpoint to parapet	918.00
Distance viewpoint to RTU	995.00
X	50.94
Amount visible over parapet (ft)	-2.43
Visibility in inches	0

Siteline #B to RTU-7	Ft
FFE	2,252.00
Parapet from FFE	25.33
Datum Parapet	2,277.33
Joist bearing	20.31
Deck+insul.	0.25
RTU+curb	4.92
RTU Ht	2,277.48
Viewpoint elevation	2,229.00
Viewpoint ht to Parapet ht	48.33
Viewpoint ht to RTU ht	48.48
Distance viewpoint to parapet	918.00
Distance viewpoint to RTU	1,015.00
X	53.44
Amount visible over parapet (ft)	-4.96
Visibility in inches	0

Visibility is calculated by similar triangles.
 Assuming no construction and/or landscaping between viewpoint and Target.
 Visibility beyond indicated points has not been reviewed.

SIGHTLINE INFORMATION WORKSHEET	ROOF TOP UNITS
PROJECT: Scottsdale North	9000.001.00
date: 3/20/00	

Siteline #B to RTU-2	Ft
FFE	2,252.00
Parapet from FFE	24.00
Datum Parapet	2,276.00
Joist bearing	21.09
Deck+insul.	0.25
RTU+curb	4.92
RTU Ht	2,278.26
Viewpoint elevation	2,229.00
Viewpoint ht to Parapet ht	47.00
Viewpoint ht to RTU ht	49.26
Distance viewpoint to parapet	912.00
Distance viewpoint to RTU	1,003.00
X	51.69
Amount visible over parapet (ft)	-2.43
Visibility in inches	0

Siteline #B to RTU-6	Ft
FFE	2,252.00
Parapet from FFE	24.00
Datum Parapet	2,276.00
Joist bearing	20.58
Deck+insul.	0.25
RTU+curb	4.17
RTU Ht	2,277.00
Viewpoint elevation	2,229.00
Viewpoint ht to Parapet ht	47.00
Viewpoint ht to RTU ht	48.00
Distance viewpoint to parapet	920.00
Distance viewpoint to RTU	1,065.00
X	54.41
Amount visible over parapet (ft)	-6.41
Visibility in inches	0

Siteline #B to RTU-1	Ft
FFE	2,252.00
Parapet from FFE	24.00
Datum Parapet	2,276.00
Joist bearing	21.09
Deck+insul.	0.25
RTU+curb	4.92
RTU Ht per field	2,278.26
Viewpoint elevation	2,229.00
Viewpoint ht to Parapet ht	47.00
Viewpoint ht to RTU ht	49.26
Distance viewpoint to parapet	930.00
Distance viewpoint to RTU	1,015.00
X	51.30
Amount visible over parapet (ft)	-2.04
Visibility in inches	0

Siteline #B to RTU-23	Ft
FFE	2,252.00
Parapet from FFE	24.00
Datum Parapet	2,276.00
Joist bearing	20.96
Deck+insul.	0.25
RTU+curb	4.92
RTU Ht	2,278.13
Viewpoint elevation	2,229.00
Viewpoint ht to Parapet ht	47.00
Viewpoint ht to RTU ht	49.13
Distance viewpoint to parapet	935.00
Distance viewpoint to RTU	1,042.00
X	52.38
Amount visible over parapet (ft)	-3.25
Visibility in inches	0

Visibility is calculated by similar triangles.
 Assuming no construction and/or landscaping between viewpoint and Target.
 Visibility beyond indicated points has not been reviewed.

SIGHTLINE INFORMATION WORKSHEET

ROOF TOP UNITS

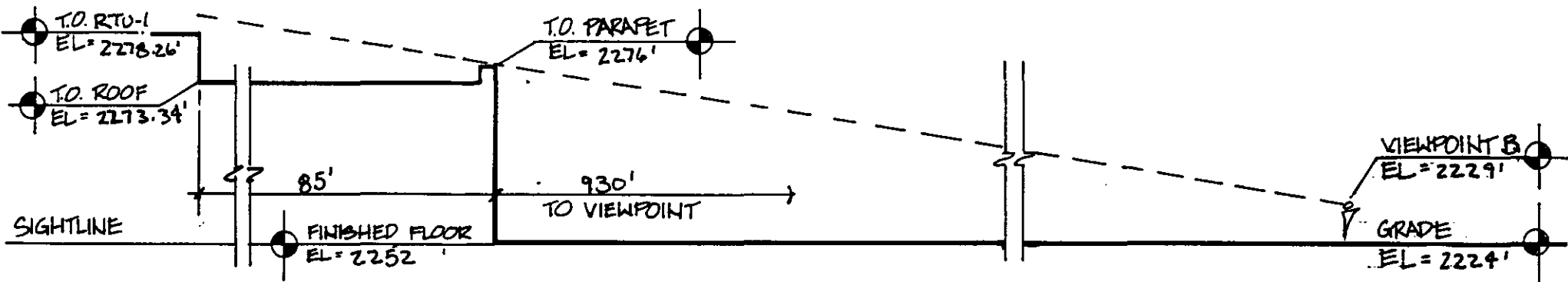
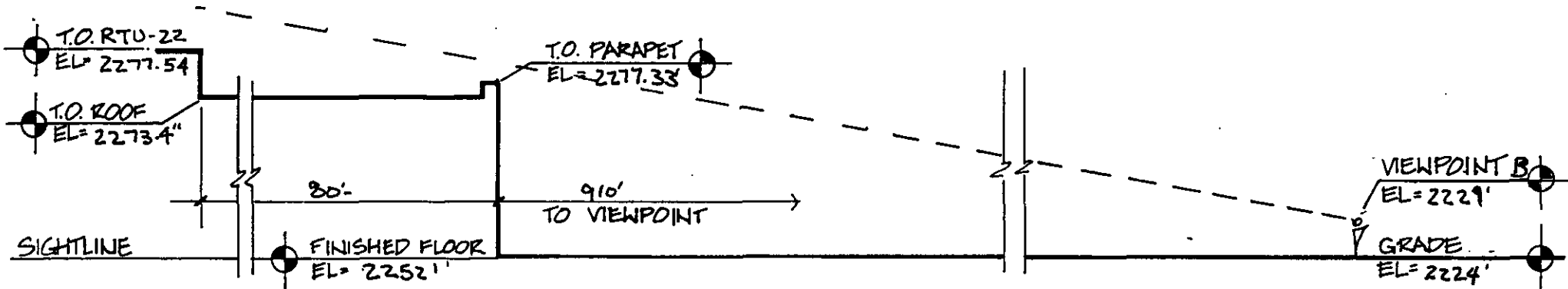
PROJECT: Scottsdale North

9000.001.00

date: 3/20/00

Siteline #B to RTU-5	Ft
FFE	2,252.00
Parapet from FFE	24.00
Datum Parapet	2,276.00
Joist bearing	20.79
Deck+insul.	0.25
RTU+curb	4.17
RTU Ht	2,277.21
Viewpoint elevation	2,229.00
Viewpoint ht to Parapet ht	47.00
Viewpoint ht to RTU ht	48.21
Distance viewpoint to parapet	935.00
Distance viewpoint to RTU	1,055.00
X	53.03
Amount visible over parapet (ft)	-4.82
Visibility in inches	0

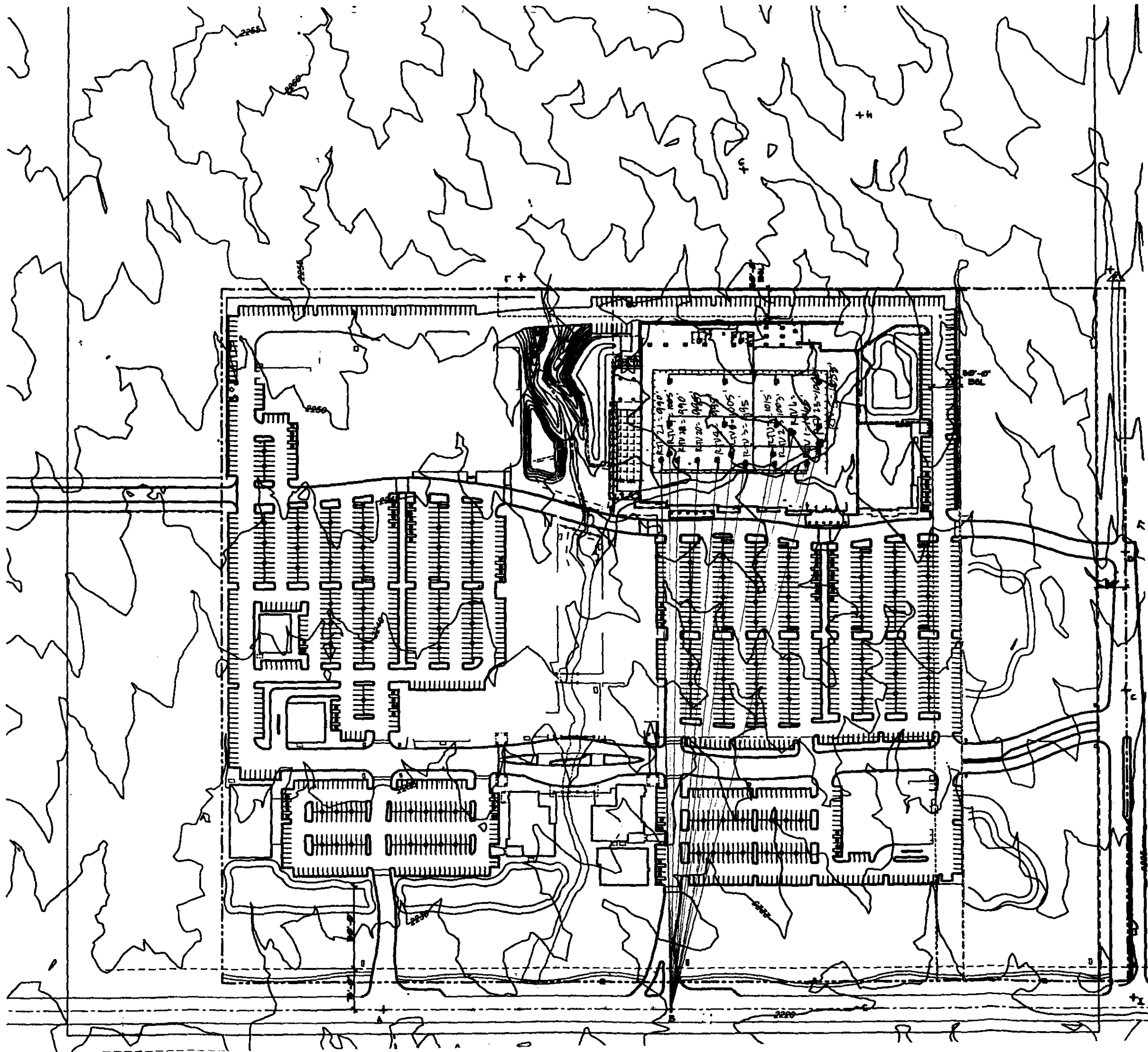
Visibility is calculated by similar triangles.
 Assuming no construction and/or landscaping between viewpoint and Target.
 Visibility beyond indicated points has not been reviewed.



SIGHTLINE CALCULATIONS
T-1327 Far North Scottsdale

RSP + SLL

RSP Architects, Ltd. in association with
 Setter Leach & Understrom, Inc.
 Architects • Engineers • Planners
 120 First Avenue North
 Minneapolis, Minnesota 55401
 FAX 612-338-6780
 612-338-0223



SITE LINE B
EL = 2.224

SIGHTLINE INFORMATION WORKSHEET	ROOF TOP UNITS
PROJECT: Scottsdale North	9000.001.00
date: 3/20/00	

Siteline #C to RTU-1	Ft
FFE	2,252.00
Parapet from FFE	24.00
Datum Parapet	2,276.00
Joist bearing	21.09
Deck+insul.	0.25
RTU+curb	4.17
RTU Ht	2,277.51
Viewpoint elevation	2,228.00
Viewpoint ht to Parapet ht	48.00
Viewpoint ht to RTU ht	49.51
Distance viewpoint to parapet	595.00
Distance viewpoint to RTU	705.00
X	56.87
Amount visible over parapet (ft)	-7.36
Visibility in inches	0

Siteline #C to RTU-2	Ft
FFE	2,252.00
Parapet from FFE	28.00
Datum Parapet	2,280.00
Joist bearing	21.09
Deck+insul.	0.25
RTU+curb	4.17
RTU Ht	2,277.51
Viewpoint elevation	2,228.00
Viewpoint ht to Parapet ht	52.00
Viewpoint ht to RTU ht	49.51
Distance viewpoint to parapet	600.00
Distance viewpoint to RTU	755.00
X	65.43
Amount visible over parapet (ft)	-15.92
Visibility in inches	0

Siteline #C to RTU-7	Ft
FFE	2,252.00
Parapet from FFE	24.00
Datum Parapet	2,276.00
Joist bearing	20.90
Deck+insul.	0.25
RTU+curb	4.92
RTU Ht per field	2,278.07
Viewpoint elevation	2,228.00
Viewpoint ht to Parapet ht	48.00
Viewpoint ht to RTU ht	50.07
Distance viewpoint to parapet	580.00
Distance viewpoint to RTU	765.00
X	63.31
Amount visible over parapet (ft)	-13.24
Visibility in inches	0

Siteline #C to RTU-3	Ft
FFE	2,252.00
Parapet from FFE	28.00
Datum Parapet	2,280.00
Joist bearing	21.09
Deck+insul.	0.25
RTU+curb	4.17
RTU Ht	2,277.51
Viewpoint elevation	2,228.00
Viewpoint ht to Parapet ht	52.00
Viewpoint ht to RTU ht	49.51
Distance viewpoint to parapet	632.00
Distance viewpoint to RTU	800.00
X	65.82
Amount visible over parapet (ft)	-16.31
Visibility in inches	0

Visibility is calculated by similar triangles.
 Assuming no construction and/or landscaping between viewpoint and Target.
 Visibility beyond indicated points has not been reviewed.

SIGHTLINE INFORMATION WORKSHEET	ROOF TOP UNITS
PROJECT: Scottsdale North	9000.001.00
date: 3/20/00	

Siteline #C to RTU-8	Ft
FFE	2,252.00
Parapet from FFE	28.00
Datum Parapet	2,280.00
Joist bearing	20.90
Deck+insul.	0.25
RTU+curb	4.92
RTU Ht	2,278.07
Viewpoint elevation	2,228.00
Viewpoint ht to Parapet ht	52.00
Viewpoint ht to RTU ht	50.07
Distance viewpoint to parapet	632.00
Distance viewpoint to RTU	830.00
X	68.29
Amount visible over parapet (ft)	-18.22
Visibility in inches	0

Siteline #C to RTU-5	Ft
FFE	2,252.00
Parapet from FFE	24.00
Datum Parapet	2,276.00
Joist bearing	20.79
Deck+insul.	0.25
RTU+curb	4.17
RTU Ht	2,277.21
Viewpoint elevation	2,228.00
Viewpoint ht to Parapet ht	48.00
Viewpoint ht to RTU ht	49.21
Distance viewpoint to parapet	620.00
Distance viewpoint to RTU	707.00
X	54.74
Amount visible over parapet (ft)	-5.53
Visibility in inches	0

Siteline #C to RTU-23	Ft
FFE	2,252.00
Parapet from FFE	24.00
Datum Parapet	2,276.00
Joist bearing	20.96
Deck+insul.	0.25
RTU+curb	4.92
RTU Ht per field	2,278.13
Viewpoint elevation	2,228.00
Viewpoint ht to Parapet ht	48.00
Viewpoint ht to RTU ht	50.13
Distance viewpoint to parapet	612.00
Distance viewpoint to RTU	700.00
X	54.90
Amount visible over parapet (ft)	-4.77
Visibility in inches	0

Siteline #C to RTU-6	Ft
FFE	2,252.00
Parapet from FFE	24.00
Datum Parapet	2,276.00
Joist bearing	20.96
Deck+insul.	0.25
RTU+curb	4.92
RTU Ht	2,278.13
Viewpoint elevation	2,228.00
Viewpoint ht to Parapet ht	48.00
Viewpoint ht to RTU ht	50.13
Distance viewpoint to parapet	612.00
Distance viewpoint to RTU	760.00
X	59.61
Amount visible over parapet (ft)	-9.48
Visibility in inches	0

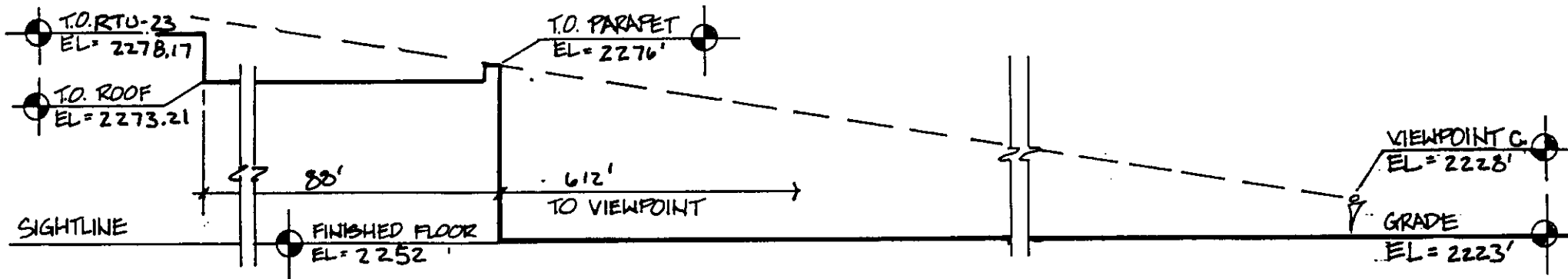
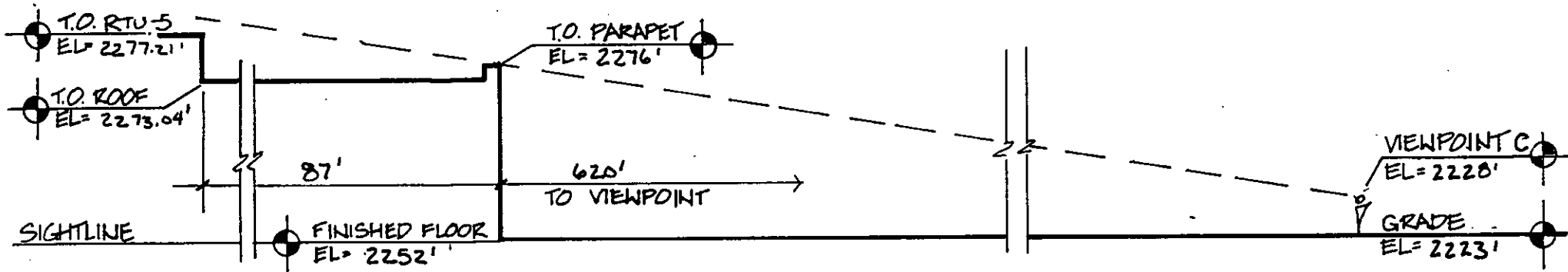
Visibility is calculated by similar triangles.
 Assuming no construction and/or landscaping between viewpoint and Target.
 Visibility beyond indicated points has not been reviewed.

SIGHTLINE INFORMATION WORKSHEET	ROOF TOP UNITS
PROJECT: Scottsdale North	9000.001.00
date: 3/20/00	

Siteline #C to RTU-11	Ft
FFE	2,252.00
Parapet from FFE	24.00
Datum Parapet	2,276.00
Joist bearing	20.22
Deck+insul.	0.25
RTU+curb	4.92
RTU Ht	2,277.39
Viewpoint elevation	2,228.00
Viewpoint ht to Parapet ht	48.00
Viewpoint ht to RTU ht	49.39
Distance viewpoint to parapet	608.00
Distance viewpoint to RTU	795.00
X	62.76
Amount visible over parapet (ft)	-13.37
Visibility in inches	0

Siteline #C to RTU-14	Ft
FFE	2,252.00
Parapet from FFE	24.00
Datum Parapet	2,276.00
Joist bearing	19.98
Deck+insul.	0.25
RTU+curb	4.92
RTU Ht	2,277.15
Viewpoint elevation	2,228.00
Viewpoint ht to Parapet ht	48.00
Viewpoint ht to RTU ht	49.15
Distance viewpoint to parapet	682.00
Distance viewpoint to RTU	780.00
X	54.90
Amount visible over parapet (ft)	-5.75
Visibility in inches	0

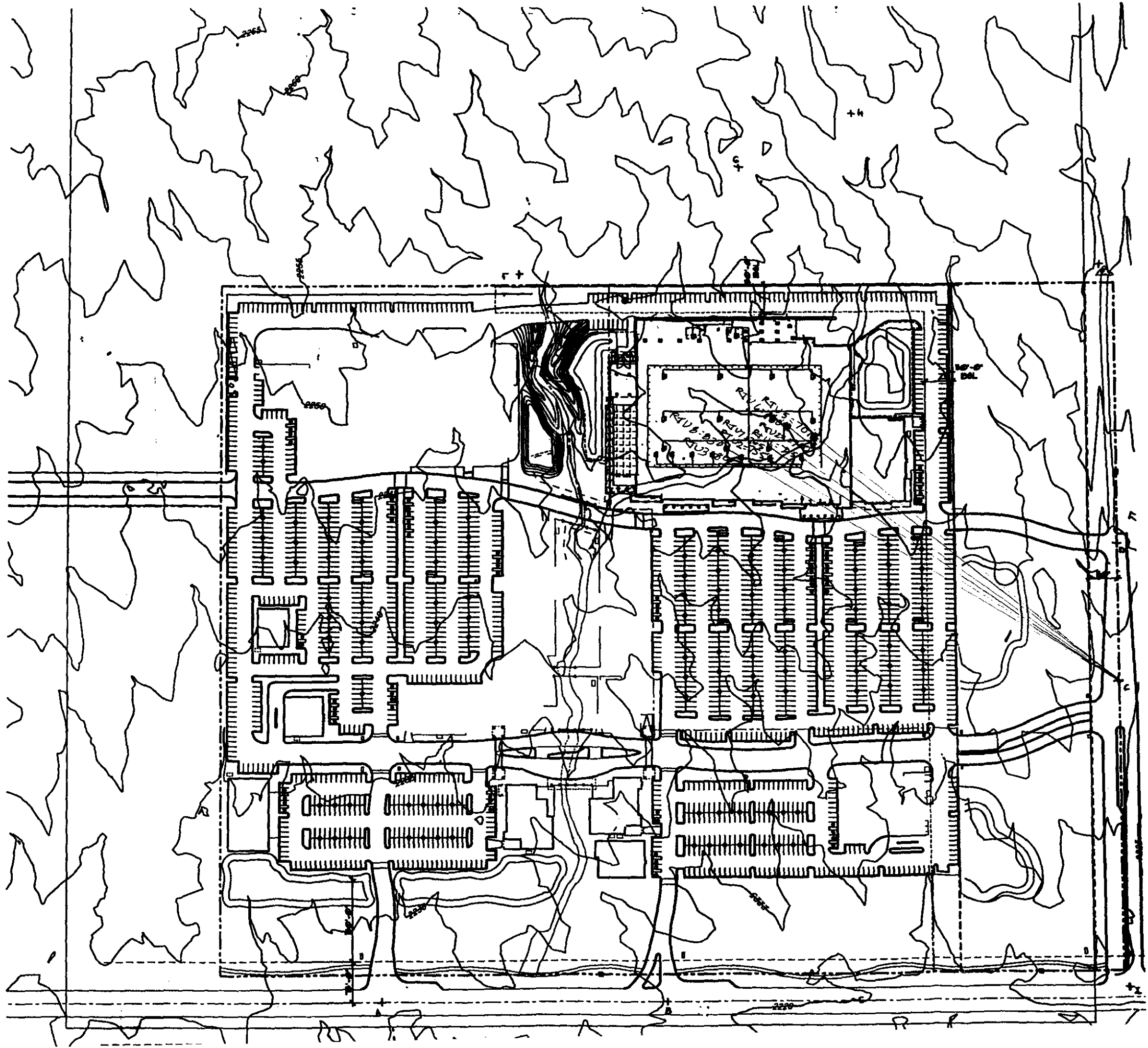
Visibility is calculated by similar triangles.
 Assuming no construction and/or landscaping between viewpoint and Target.
 Visibility beyond indicated points has not been reviewed.



SIGHTLINE CALCULATIONS
 T-1327 Far North Scottsdale

RSP + SLL

RSP Architects, Ltd. in association with
 Setzer Leach & Lindstrom, Inc.
 Architects • Engineers • Planners
 120 First Avenue North
 Minneapolis, Minnesota 55401
 FAX 612-338-8780
 612-338-0313



SITELING C
E 4-2223'

SIGHTLINE INFORMATION WORKSHEET	ROOF TOP UNITS
PROJECT: Scottsdale North	9000.001.00
date: 3/20/00	

Siteline #D to RTU-1	Ft
FFE	2,252.00
Parapet from FFE	24.00
Datum Parapet	2,276.00
Joist bearing	21.09
Deck+insul.	0.25
RTU+curb	4.17
RTU Ht	2,277.51
Viewpoint elevation	2,243.00
Viewpoint ht to Parapet ht	33.00
Viewpoint ht to RTU ht	34.51
Distance viewpoint to parapet	500.00
Distance viewpoint to RTU	595.00
X	39.27
Amount visible over parapet (ft)	-4.76
Visibility in inches	0

Siteline #D to RTU-23	Ft
FFE	2,252.00
Parapet from FFE	24.00
Datum Parapet	2,276.00
Joist bearing	20.96
Deck+insul.	0.25
RTU+curb	4.92
RTU Ht	2,278.13
Viewpoint elevation	2,243.00
Viewpoint ht to Parapet ht	33.00
Viewpoint ht to RTU ht	35.13
Distance viewpoint to parapet	500.00
Distance viewpoint to RTU	580.00
X	38.28
Amount visible over parapet (ft)	-3.15
Visibility in inches	0

Siteline #D to RTU-5	Ft
FFE	2,252.00
Parapet from FFE	24.00
Datum Parapet	2,276.00
Joist bearing	20.79
Deck+insul.	0.25
RTU+curb	4.17
RTU Ht per field	2,277.21
Viewpoint elevation	2,243.00
Viewpoint ht to Parapet ht	33.00
Viewpoint ht to RTU ht	34.21
Distance viewpoint to parapet	512.00
Distance viewpoint to RTU	585.00
X	37.71
Amount visible over parapet (ft)	-3.50
Visibility in inches	0

Siteline #D to RTU-6	Ft
FFE	2,252.00
Parapet from FFE	24.00
Datum Parapet	2,276.00
Joist bearing	20.58
Deck+insul.	0.25
RTU+curb	4.92
RTU Ht	2,277.75
Viewpoint elevation	2,243.00
Viewpoint ht to Parapet ht	33.00
Viewpoint ht to RTU ht	34.75
Distance viewpoint to parapet	512.00
Distance viewpoint to RTU	635.00
X	40.93
Amount visible over parapet (ft)	-6.18
Visibility in inches	0

Visibility is calculated by similar triangles.
 Assuming no construction and/or landscaping between viewpoint and Target.
 Visibility beyond indicated points has not been reviewed.

SIGHTLINE INFORMATION WORKSHEET

PROJECT: Scottsdale North

date: 3/20/00

ROOF TOP UNITS

9000.001.00

Siteline #D to RTU-11	Ft
FFE	2,252.00
Parapet from FFE	24.00
Datum Parapet	2,276.00
Joist bearing	20.22
Deck+insul.	0.25
RTU+curb	4.92
RTU Ht	2,277.39
Viewpoint elevation	2,243.00
Viewpoint ht to Parapet ht	33.00
Viewpoint ht to RTU ht	34.39
Distance viewpoint to parapet	515.00
Distance viewpoint to RTU	670.00
X	42.93
Amount visible over parapet (ft)	-8.54
Visibility in inches	0

Siteline #D to RTU-10	Ft
FFE	2,252.00
Parapet from FFE	24.00
Datum Parapet	2,276.00
Joist bearing	20.30
Deck+insul.	0.25
RTU+curb	4.92
RTU Ht	2,277.47
Viewpoint elevation	2,243.00
Viewpoint ht to Parapet ht	33.00
Viewpoint ht to RTU ht	34.47
Distance viewpoint to parapet	522.00
Distance viewpoint to RTU	595.00
X	37.61
Amount visible over parapet (ft)	-3.14
Visibility in inches	0

Siteline #D to RTU-15	Ft
FFE	2,252.00
Parapet from FFE	24.00
Datum Parapet	2,276.00
Joist bearing	19.29
Deck+insul.	0.25
RTU+curb	4.92
RTU Ht per field	2,276.46
Viewpoint elevation	2,243.00
Viewpoint ht to Parapet ht	33.00
Viewpoint ht to RTU ht	33.46
Distance viewpoint to parapet	537.00
Distance viewpoint to RTU	700.00
X	43.02
Amount visible over parapet (ft)	-9.56
Visibility in inches	0

Siteline #D to RTU-18	Ft
FFE	2,252.00
Parapet from FFE	24.00
Datum Parapet	2,276.00
Joist bearing	18.41
Deck+insul.	0.25
RTU+curb	4.92
RTU Ht	2,275.58
Viewpoint elevation	2,243.00
Viewpoint ht to Parapet ht	33.00
Viewpoint ht to RTU ht	32.58
Distance viewpoint to parapet	552.00
Distance viewpoint to RTU	790.00
X	47.23
Amount visible over parapet (ft)	-14.65
Visibility in inches	0

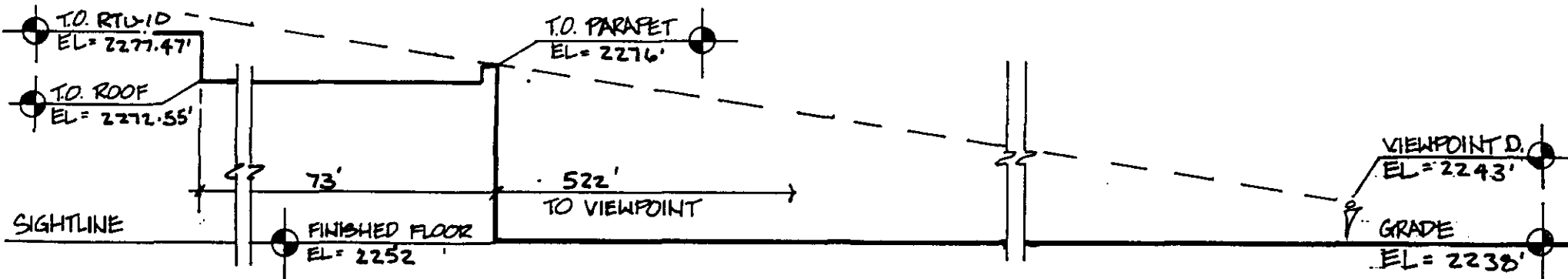
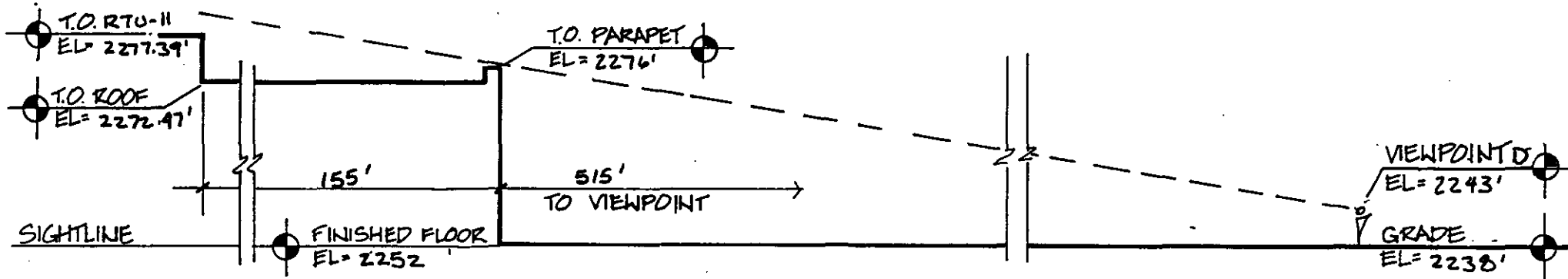
Visibility is calculated by similar triangles.
 Assuming no construction and/or landscaping between viewpoint and Target.
 Visibility beyond indicated points has not been reviewed.

SIGHTLINE INFORMATION WORKSHEET	ROOF TOP UNITS
PROJECT: Scottsdale North	9000.001.00
date: 3/20/00	

Siteline #D to RTU-16	Ft
FFE	2,252.00
Parapet from FFE	24.00
Datum Parapet	2,276.00
Joist bearing	19.29
Deck+insul.	0.25
RTU+curb	4.92
RTU Ht	2,276.46
Viewpoint elevation	2,243.00
Viewpoint ht to Parapet ht	33.00
Viewpoint ht to RTU ht	33.46
Distance viewpoint to parapet	529.00
Distance viewpoint to RTU	790.00
X	49.28
Amount visible over parapet (ft)	-15.82
Visibility in inches	0

Siteline #D to RTU-14	Ft
FFE	2,252.00
Parapet from FFE	24.00
Datum Parapet	2,276.00
Joist bearing	19.98
Deck+insul.	0.25
RTU+curb	4.92
RTU Ht	2,277.15
Viewpoint elevation	2,243.00
Viewpoint ht to Parapet ht	33.00
Viewpoint ht to RTU ht	34.15
Distance viewpoint to parapet	555.00
Distance viewpoint to RTU	630.00
X	37.46
Amount visible over parapet (ft)	-3.31
Visibility in inches	0

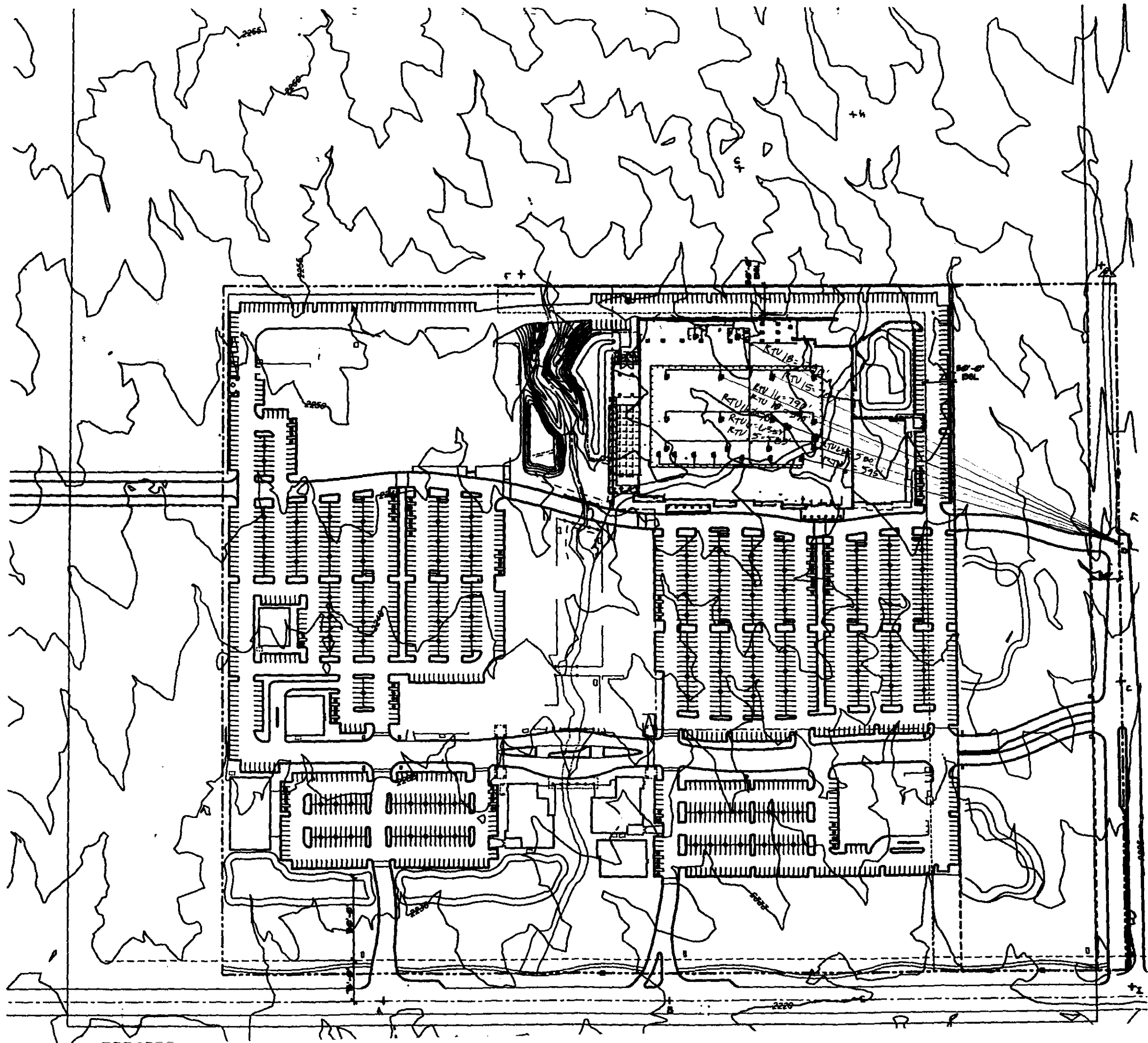
Visibility is calculated by similar triangles.
 Assuming no construction and/or landscaping between viewpoint and Target.
 Visibility beyond indicated points has not been reviewed.



SIGHTLINE CALCULATIONS
T-1327 Far North Scottsdale

RSP + SLL

RSP Architects, Ltd. in association with
 Setzer Leach & Lindstrom, Inc.
 Architects • Engineers • Planners
 120 First Avenue North
 Minneapolis, Minnesota 55401
 FAX 612-338-8780



SITELINE D
EL= 2238'

SIGHTLINE INFORMATION WORKSHEET	ROOF TOP UNITS
PROJECT: Scottsdale North	9000.001.00
date: 3/20/00	

Siteline #E to RTU-14	Ft
FFE	2,252.00
Parapet from FFE	24.00
Datum Parapet	2,276.00
Joist bearing	19.98
Deck+insul.	0.25
RTU+curb	4.92
RTU Ht	2,277.15
Viewpoint elevation	2,255.00
Viewpoint ht to Parapet ht	21.00
Viewpoint ht to RTU ht	22.15
Distance viewpoint to parapet	490.00
Distance viewpoint to RTU	560.00
X	24.00
Amount visible over parapet (ft)	-1.85
Visibility in inches	0

Siteline #E to RTU-15	Ft
FFE	2,252.00
Parapet from FFE	24.00
Datum Parapet	2,276.00
Joist bearing	19.29
Deck+insul.	0.25
RTU+curb	4.92
RTU Ht	2,276.46
Viewpoint elevation	2,255.00
Viewpoint ht to Parapet ht	21.00
Viewpoint ht to RTU ht	21.46
Distance viewpoint to parapet	485.00
Distance viewpoint to RTU	640.00
X	27.71
Amount visible over parapet (ft)	-6.25
Visibility in inches	0

Siteline #E to RTU-16	Ft
FFE	2,252.00
Parapet from FFE	24.00
Datum Parapet	2,276.00
Joist bearing	19.29
Deck+insul.	0.25
RTU+curb	4.92
RTU Ht per field	2,276.46
Viewpoint elevation	2,255.00
Viewpoint ht to Parapet ht	21.00
Viewpoint ht to RTU ht	21.46
Distance viewpoint to parapet	520.00
Distance viewpoint to RTU	725.00
X	29.28
Amount visible over parapet (ft)	-7.82
Visibility in inches	0

Siteline #E to RTU-17	Ft
FFE	2,252.00
Parapet from FFE	24.00
Datum Parapet	2,276.00
Joist bearing	19.98
Deck+insul.	0.25
RTU+curb	4.92
RTU Ht	2,277.15
Viewpoint elevation	2,255.00
Viewpoint ht to Parapet ht	21.00
Viewpoint ht to RTU ht	22.15
Distance viewpoint to parapet	550.00
Distance viewpoint to RTU	820.00
X	31.31
Amount visible over parapet (ft)	-9.16
Visibility in inches	0

Visibility is calculated by similar triangles.
 Assuming no construction and/or landscaping between viewpoint and Target.
 Visibility beyond indicated points has not been reviewed.

SIGHTLINE INFORMATION WORKSHEET	ROOF TOP UNITS
PROJECT: Scottsdale North	9000.001.00
date: 3/20/00	

Siteline #E to RTU-10	Ft
FFE	2,252.00
Parapet from FFE	24.00
Datum Parapet	2,276.00
Joist bearing	20.30
Deck+insul.	0.25
RTU+curb	4.92
RTU Ht	2,277.47
Viewpoint elevation	2,255.00
Viewpoint ht to Parapet ht	21.00
Viewpoint ht to RTU ht	22.47
Distance viewpoint to parapet	512.00
Distance viewpoint to RTU	595.00
X	24.40
Amount visible over parapet (ft)	-1.93
Visibility in inches	0

Siteline #E to RTU-5	Ft
FFE	2,252.00
Parapet from FFE	24.00
Datum Parapet	2,276.00
Joist bearing	20.79
Deck+insul.	0.25
RTU+curb	4.17
RTU Ht	2,277.21
Viewpoint elevation	2,255.00
Viewpoint ht to Parapet ht	21.00
Viewpoint ht to RTU ht	22.21
Distance viewpoint to parapet	530.00
Distance viewpoint to RTU	610.00
X	24.17
Amount visible over parapet (ft)	-1.96
Visibility in inches	0

Siteline #E to RTU-23	Ft
FFE	2,252.00
Parapet from FFE	24.00
Datum Parapet	2,276.00
Joist bearing	20.96
Deck+insul.	0.25
RTU+curb	4.92
RTU Ht per field	2,278.13
Viewpoint elevation	2,255.00
Viewpoint ht to Parapet ht	21.00
Viewpoint ht to RTU ht	23.13
Distance viewpoint to parapet	538.00
Distance viewpoint to RTU	620.00
X	24.20
Amount visible over parapet (ft)	-1.07
Visibility in inches	0

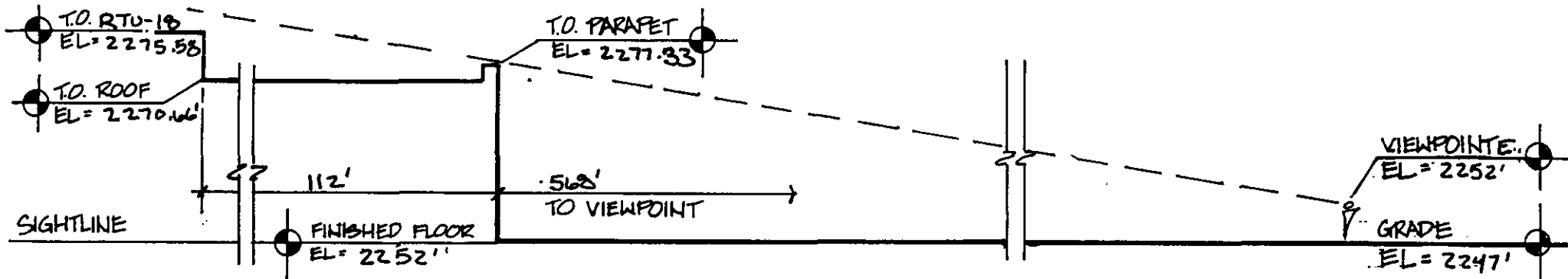
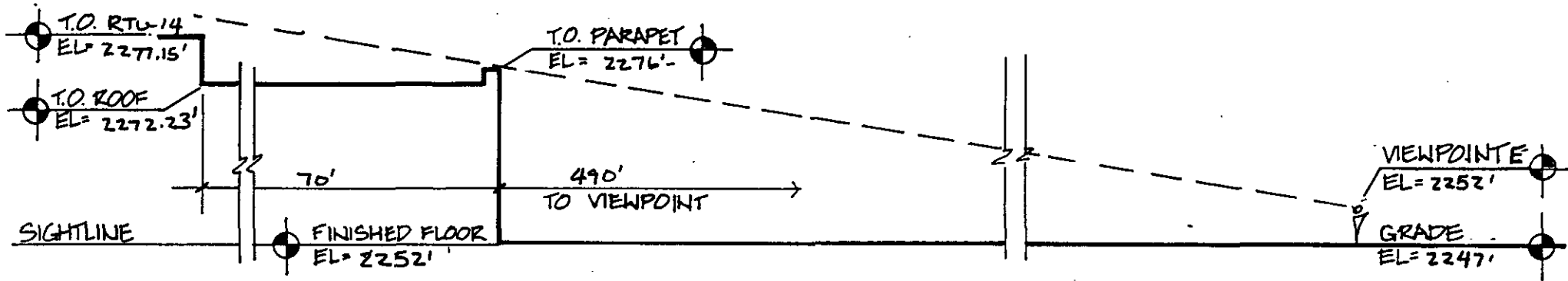
Siteline #E to RTU-1	Ft
FFE	2,252.00
Parapet from FFE	24.00
Datum Parapet	2,276.00
Joist bearing	21.09
Deck+insul.	0.25
RTU+curb	4.92
RTU Ht	2,278.26
Viewpoint elevation	2,255.00
Viewpoint ht to Parapet ht	21.00
Viewpoint ht to RTU ht	23.26
Distance viewpoint to parapet	542.00
Distance viewpoint to RTU	650.00
X	25.18
Amount visible over parapet (ft)	-1.92
Visibility in inches	0

Visibility is calculated by similar triangles.
 Assuming no construction and/or landscaping between viewpoint and Target.
 Visibility beyond indicated points has not been reviewed.

SIGHTLINE INFORMATION WORKSHEET	ROOF TOP UNITS
PROJECT: Scottsdale North	9000.001.00
date: 3/20/00	

Siteline E to RTU-18	Ft
FFE	2,252.00
Parapet from FFE	25.33
Datum Parapet	2,277.33
Joist bearing	18.41
Deck+insul.	0.25
RTU+curb	4.92
RTU Ht	2,275.58
Viewpoint elevation	2,255.00
Viewpoint ht to Parapet ht	22.33
Viewpoint ht to RTU ht	20.58
Distance viewpoint to parapet	568.00
Distance viewpoint to RTU	680.00
X	26.73
Amount visible over parapet (ft)	-6.15
Visibility in inches	0

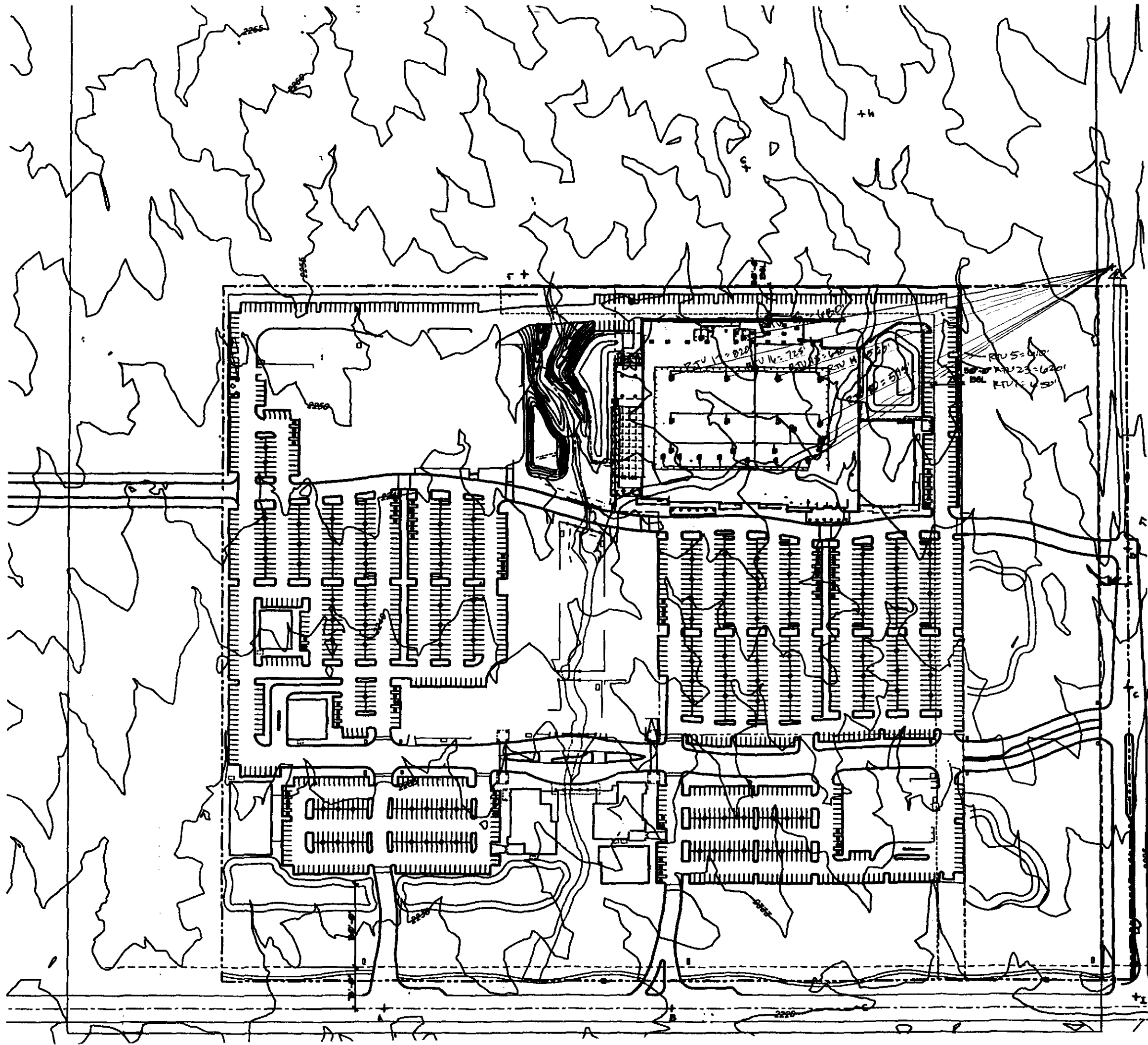
Visibility is calculated by similar triangles.
 Assuming no construction and/or landscaping between viewpoint and Target.
 Visibility beyond indicated points has not been reviewed.



SIGHTLINE CALCULATIONS
T-1327 Far North Scottsdale

RSP + SLL

RSP Architects, Ltd. in association with
 Setzer Leach & Lindstrom, Inc.
 Architects • Engineers • Planners
 120 First Avenue North
 Minneapolis, Minnesota 55401
 FAX 612-330-6780
 www.rsp-sll.com



SITE LINE E
EL = 2,250'

SIGHTLINE INFORMATION WORKSHEET	ROOF TOP UNITS
PROJECT: Scottsdale North	9000.001.00
date: 3/20/00	

Siteline #F to RTU-19	Ft
FFE	2,252.00
Parapet from FFE	25.33
Datum Parapet	2,277.33
Joist bearing	18.85
Deck+insul.	0.25
RTU+curb	4.92
RTU Ht	2,276.02
Viewpoint elevation	2,257.00
Viewpoint ht to Parapet ht	20.33
Viewpoint ht to RTU ht	19.02
Distance viewpoint to parapet	240.00
Distance viewpoint to RTU	345.00
X	29.22
Amount visible over parapet (ft)	-10.20
Visibility in inches	0

Siteline #F to RTU-18	Ft
FFE	2,252.00
Parapet from FFE	24.00
Datum Parapet	2,276.00
Joist bearing	18.41
Deck+insul.	0.25
RTU+curb	4.92
RTU Ht	2,275.58
Viewpoint elevation	2,257.00
Viewpoint ht to Parapet ht	19.00
Viewpoint ht to RTU ht	18.58
Distance viewpoint to parapet	310.00
Distance viewpoint to RTU	415.00
X	25.44
Amount visible over parapet (ft)	-6.86
Visibility in inches	0

Siteline #F to RTU-16	Ft
FFE	2,252.00
Parapet from FFE	25.33
Datum Parapet	2,277.33
Joist bearing	19.29
Deck+insul.	0.25
RTU+curb	4.92
RTU Ht per field	2,276.46
Viewpoint elevation	2,257.00
Viewpoint ht to Parapet ht	20.33
Viewpoint ht to RTU ht	19.46
Distance viewpoint to parapet	245.00
Distance viewpoint to RTU	415.00
X	34.44
Amount visible over parapet (ft)	-14.98
Visibility in inches	0

Siteline #F to RTU-17	Ft
FFE	2,252.00
Parapet from FFE	24.00
Datum Parapet	2,276.00
Joist bearing	19.98
Deck+insul.	0.25
RTU+curb	4.92
RTU Ht	2,277.15
Viewpoint elevation	2,257.00
Viewpoint ht to Parapet ht	19.00
Viewpoint ht to RTU ht	20.15
Distance viewpoint to parapet	268.00
Distance viewpoint to RTU	330.00
X	23.40
Amount visible over parapet (ft)	-3.25
Visibility in inches	0

Visibility is calculated by similar triangles.
 Assuming no construction and/or landscaping between viewpoint and Target.
 Visibility beyond indicated points has not been reviewed.

SIGHTLINE INFORMATION WORKSHEET	ROOF TOP UNITS
PROJECT: Scottsdale North	9000.001.00
date: 3/20/00	

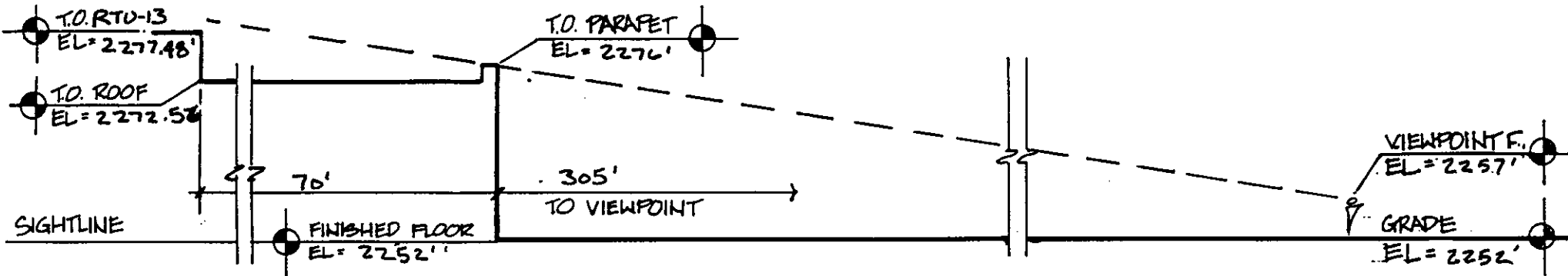
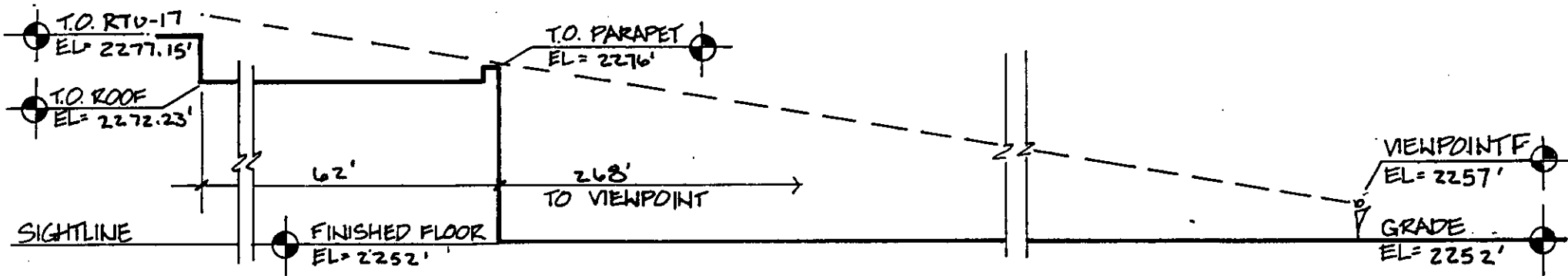
Siteline #F to RTU-13	Ft
FFE	2,252.00
Parapet from FFE	24.00
Datum Parapet	2,276.00
Joist bearing	20.31
Deck+insul.	0.25
RTU+curb	4.92
RTU Ht	2,277.48
Viewpoint elevation	2,257.00
Viewpoint ht to Parapet ht	19.00
Viewpoint ht to RTU ht	20.48
Distance viewpoint to parapet	305.00
Distance viewpoint to RTU	375.00
X	23.36
Amount visible over parapet (ft)	-2.88
Visibility in inches	0

Siteline #F to RTU-12	Ft
FFE	2,252.00
Parapet from FFE	24.00
Datum Parapet	2,276.00
Joist bearing	20.22
Deck+insul.	0.25
RTU+curb	4.92
RTU Ht	2,277.39
Viewpoint elevation	2,257.00
Viewpoint ht to Parapet ht	19.00
Viewpoint ht to RTU ht	20.39
Distance viewpoint to parapet	268.00
Distance viewpoint to RTU	455.00
X	32.26
Amount visible over parapet (ft)	-11.87
Visibility in inches	0

Siteline #F to RTU-21	Ft
FFE	2,252.00
Parapet from FFE	24.00
Datum Parapet	2,276.00
Joist bearing	21.12
Deck+insul.	0.25
RTU+curb	4.17
RTU Ht per field	2,277.54
Viewpoint elevation	2,257.00
Viewpoint ht to Parapet ht	19.00
Viewpoint ht to RTU ht	20.54
Distance viewpoint to parapet	360.00
Distance viewpoint to RTU	415.00
X	21.90
Amount visible over parapet (ft)	-1.36
Visibility in inches	0

Siteline #F to RTU-9	Ft
FFE	2,252.00
Parapet from FFE	24.00
Datum Parapet	2,276.00
Joist bearing	21.00
Deck+insul.	0.25
RTU+curb	4.92
RTU Ht	2,278.17
Viewpoint elevation	2,257.00
Viewpoint ht to Parapet ht	19.00
Viewpoint ht to RTU ht	21.17
Distance viewpoint to parapet	340.00
Distance viewpoint to RTU	415.00
X	23.19
Amount visible over parapet (ft)	-2.02
Visibility in inches	0

Visibility is calculated by similar triangles.
 Assuming no construction and/or landscaping between viewpoint and Target.
 Visibility beyond indicated points has not been reviewed.

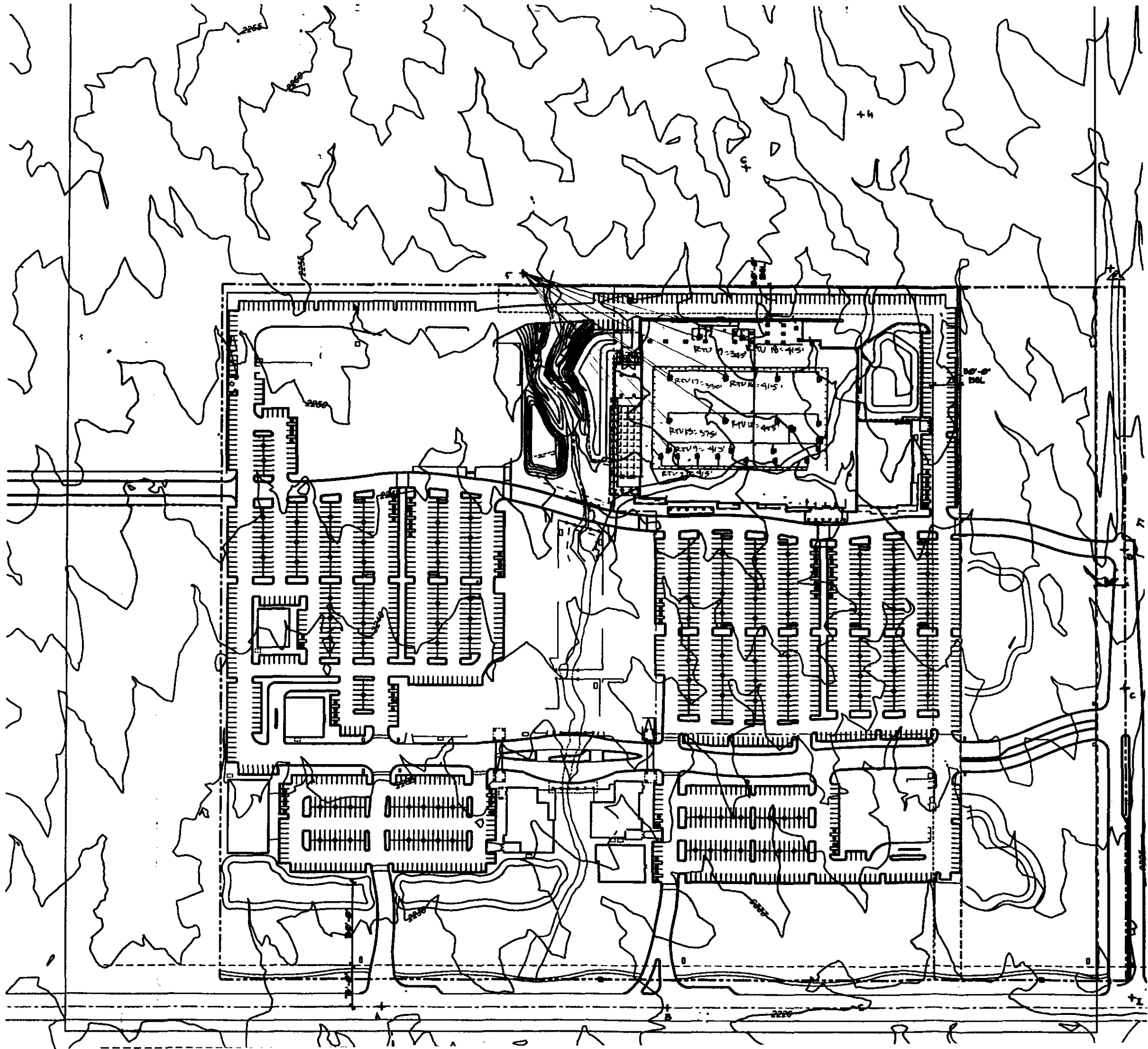


SIGHTLINE CALCULATIONS
T-1327 Far North Scottsdale

RSP + SLL

RSP Architects, Ltd. in association with
 Seder Leach & Lindstrom, Inc.
 Architects • Engineers • Planners
 120 First Avenue North
 Minneapolis, Minnesota 55401
 FAX 612-338-8780
 612-338-0373

SITELINE F
EL: 2,252'



SIGHTLINE INFORMATION WORKSHEET	ROOF TOP UNITS
PROJECT: Scottsdale North	9000.001.00
date: 3/20/00	

Siteline #G to RTU-19	Ft
FFE	2,252.00
Parapet from FFE	24.00
Datum Parapet	2,276.00
Joist bearing	18.85
Deck+insul.	0.25
RTU+curb	4.92
RTU Ht	2,276.02
Viewpoint elevation	2,259.00
Viewpoint ht to Parapet ht	17.00
Viewpoint ht to RTU ht	17.02
Distance viewpoint to parapet	285.00
Distance viewpoint to RTU	315.00
X	18.79
Amount visible over parapet (ft)	-1.77
Visibility in inches	0

Siteline #G to RTU-18	Ft
FFE	2,252.00
Parapet from FFE	24.00
Datum Parapet	2,276.00
Joist bearing	18.41
Deck+insul.	0.25
RTU+curb	4.92
RTU Ht	2,275.58
Viewpoint elevation	2,259.00
Viewpoint ht to Parapet ht	17.00
Viewpoint ht to RTU ht	16.58
Distance viewpoint to parapet	278.00
Distance viewpoint to RTU	308.00
X	18.83
Amount visible over parapet (ft)	-2.25
Visibility in inches	0

Siteline #G to RTU-16	Ft
FFE	2,252.00
Parapet from FFE	25.33
Datum Parapet	2,277.33
Joist bearing	19.29
Deck+insul.	0.25
RTU+curb	4.92
RTU Ht per field	2,276.46
Viewpoint elevation	2,259.00
Viewpoint ht to Parapet ht	18.33
Viewpoint ht to RTU ht	17.46
Distance viewpoint to parapet	245.00
Distance viewpoint to RTU	415.00
X	31.05
Amount visible over parapet (ft)	-13.59
Visibility in inches	0

Siteline #G to RTU-17	Ft
FFE	2,252.00
Parapet from FFE	24.00
Datum Parapet	2,276.00
Joist bearing	19.98
Deck+insul.	0.25
RTU+curb	4.92
RTU Ht	2,277.15
Viewpoint elevation	2,259.00
Viewpoint ht to Parapet ht	17.00
Viewpoint ht to RTU ht	18.15
Distance viewpoint to parapet	268.00
Distance viewpoint to RTU	330.00
X	20.93
Amount visible over parapet (ft)	-2.78
Visibility in inches	0

Visibility is calculated by similar triangles.
 Assuming no construction and/or landscaping between viewpoint and Target.
 Visibility beyond indicated points has not been reviewed.

SIGHTLINE INFORMATION WORKSHEET	ROOF TOP UNITS
PROJECT: Scottsdale North	9000.001.00
date: 3/20/00	

Siteline #G to RTU-13	Ft
FFE	2,252.00
Parapet from FFE	24.00
Datum Parapet	2,276.00
Joist bearing	20.31
Deck+insul.	0.25
RTU+curb	4.92
RTU Ht	2,277.48
Viewpoint elevation	2,259.00
Viewpoint ht to Parapet ht	17.00
Viewpoint ht to RTU ht	18.48
Distance viewpoint to parapet	285.00
Distance viewpoint to RTU	475.00
X	28.33
Amount visible over parapet (ft)	-9.85
Visibility in inches	0

Siteline #G to RTU-12	Ft
FFE	2,252.00
Parapet from FFE	24.00
Datum Parapet	2,276.00
Joist bearing	20.22
Deck+insul.	0.25
RTU+curb	4.92
RTU Ht	2,277.39
Viewpoint elevation	2,259.00
Viewpoint ht to Parapet ht	17.00
Viewpoint ht to RTU ht	18.39
Distance viewpoint to parapet	280.00
Distance viewpoint to RTU	460.00
X	27.93
Amount visible over parapet (ft)	-9.54
Visibility in inches	0

Siteline #G to RTU-15	Ft
FFE	2,252.00
Parapet from FFE	25.33
Datum Parapet	2,277.33
Joist bearing	19.29
Deck+insul.	0.25
RTU+curb	4.92
RTU Ht per field	2,276.46
Viewpoint elevation	2,259.00
Viewpoint ht to Parapet ht	18.33
Viewpoint ht to RTU ht	17.46
Distance viewpoint to parapet	280.00
Distance viewpoint to RTU	385.00
X	25.20
Amount visible over parapet (ft)	-7.74
Visibility in inches	0

Siteline #G to RTU-14	Ft
FFE	2,252.00
Parapet from FFE	25.33
Datum Parapet	2,277.33
Joist bearing	19.98
Deck+insul.	0.25
RTU+curb	4.92
RTU Ht	2,277.15
Viewpoint elevation	2,259.00
Viewpoint ht to Parapet ht	18.33
Viewpoint ht to RTU ht	18.15
Distance viewpoint to parapet	290.00
Distance viewpoint to RTU	405.00
X	25.60
Amount visible over parapet (ft)	-7.45
Visibility in inches	0

Visibility is calculated by similar triangles.
 Assuming no construction and/or landscaping between viewpoint and Target.
 Visibility beyond indicated points has not been reviewed.

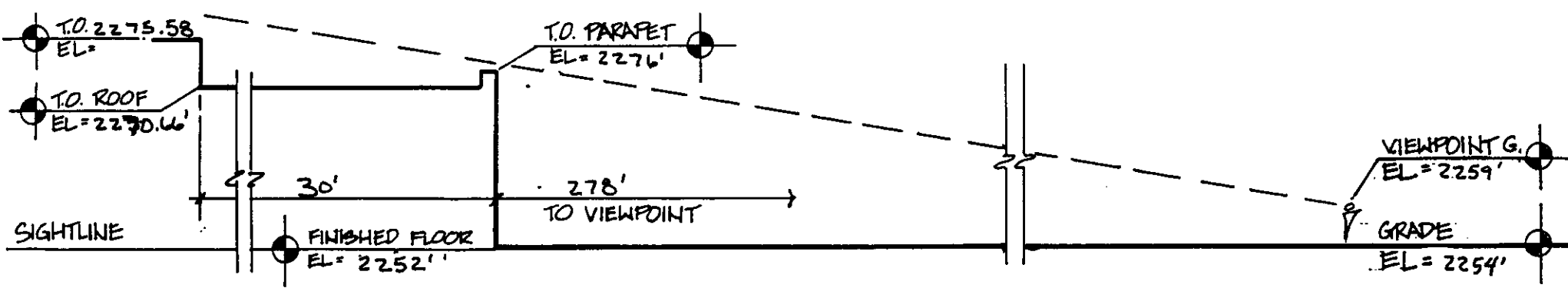
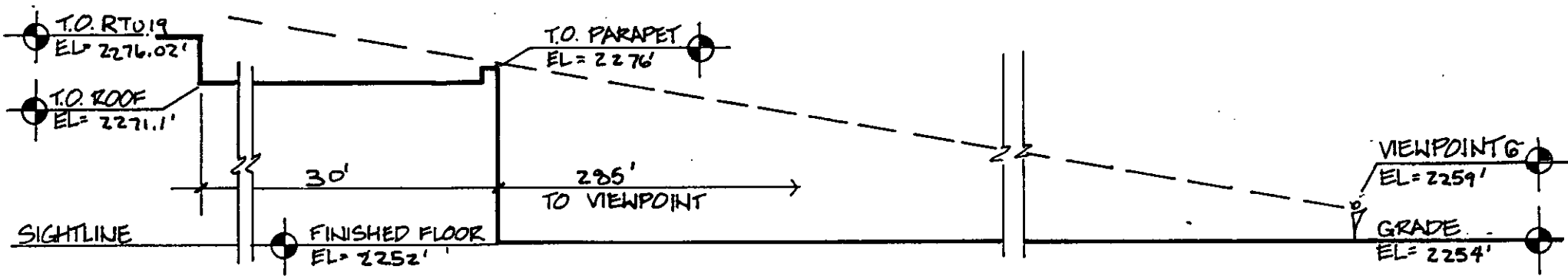
SIGHTLINE INFORMATION WORKSHEET	ROOF TOP UNITS
PROJECT: Scottsdale North	9000.001.00
date: 3/20/00	

Siteline #G to RTU-11	Ft
FFE	2,252.00
Parapet from FFE	25.33
Datum Parapet	2,277.33
Joist bearing	20.22
Deck+insul.	0.25
RTU+curb	4.92
RTU Ht	2,277.39
Viewpoint elevation	2,259.00
Viewpoint ht to Parapet ht	18.33
Viewpoint ht to RTU ht	18.39
Distance viewpoint to parapet	275.00
Distance viewpoint to RTU	460.00
X	30.66
Amount visible over parapet (ft)	-12.27
Visibility in inches	0

Siteline #G to RTU-6	Ft
FFE	2,252.00
Parapet from FFE	25.33
Datum Parapet	2,277.33
Joist bearing	20.58
Deck+insul.	0.25
RTU+curb	4.92
RTU Ht	2,277.75
Viewpoint elevation	2,259.00
Viewpoint ht to Parapet ht	18.33
Viewpoint ht to RTU ht	18.75
Distance viewpoint to parapet	278.00
Distance viewpoint to RTU	480.00
X	31.65
Amount visible over parapet (ft)	-12.90
Visibility in inches	0

Siteline #G to RTU-10	Ft
FFE	2,252.00
Parapet from FFE	25.33
Datum Parapet	2,277.33
Joist bearing	20.30
Deck+insul.	0.25
RTU+curb	4.92
RTU Ht per field	2,277.47
Viewpoint elevation	2,259.00
Viewpoint ht to Parapet ht	18.33
Viewpoint ht to RTU ht	18.47
Distance viewpoint to parapet	275.00
Distance viewpoint to RTU	480.00
X	31.99
Amount visible over parapet (ft)	-13.52
Visibility in inches	0

Visibility is calculated by similar triangles.
 Assuming no construction and/or landscaping between viewpoint and Target.
 Visibility beyond indicated points has not been reviewed.

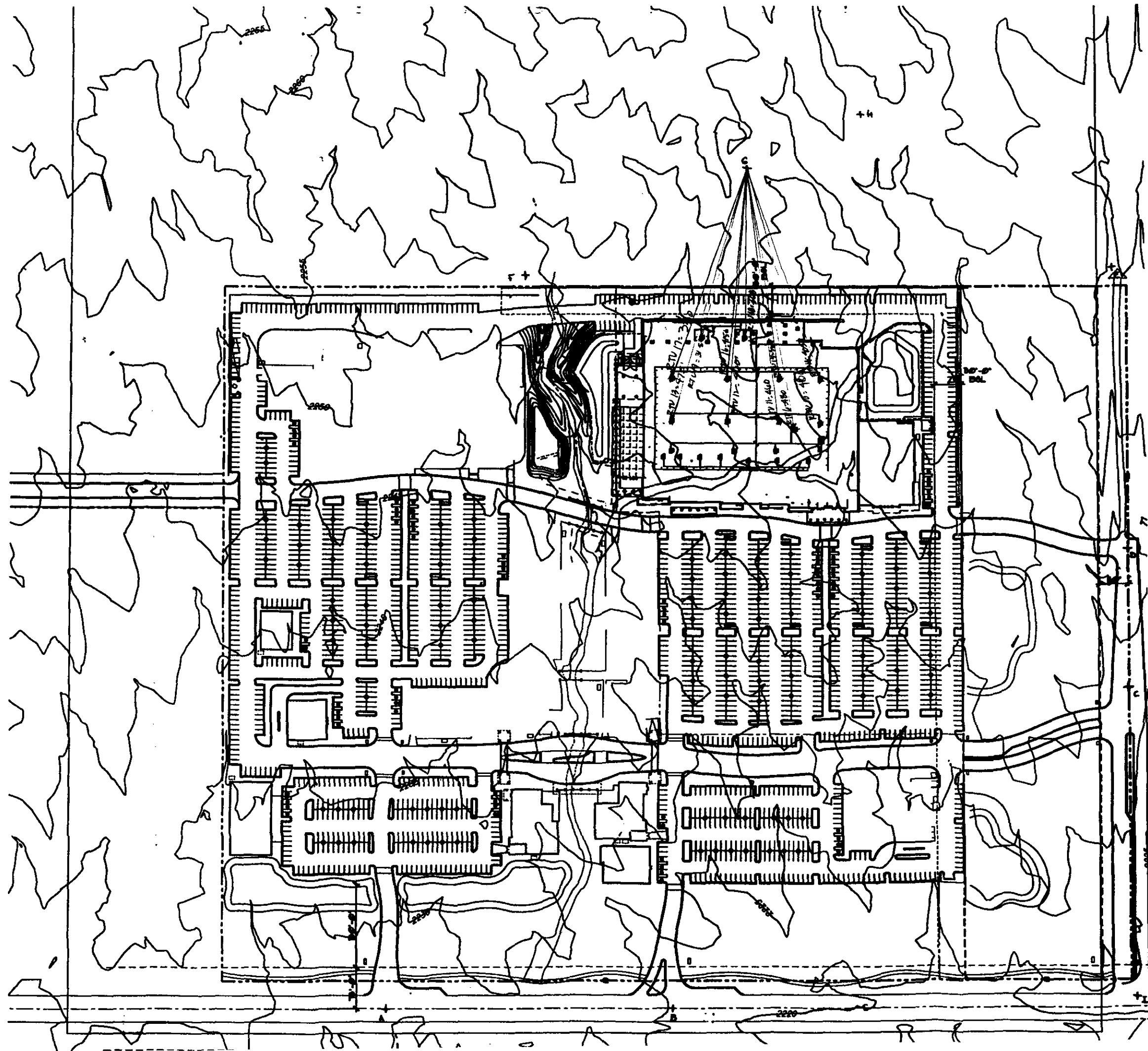


SIGHTLINE CALCULATIONS
T-1327 Far North Scottsdale

RSP + SLL

RSP Architects, Ltd. in association with
 Setzer Leach & Lindstrom, Inc.
 Architects • Engineers • Planners
 120 First Avenue North
 Minneapolis, Minnesota 55401
 FAX 612-338-6780

SITELINE G
EL. 2,254



SIGHTLINE INFORMATION WORKSHEET	ROOF TOP UNITS
PROJECT: Scottsdale North	9000.001.00
date: 3/20/00	

Siteline #H to RTU-19	Ft
FFE	2,252.00
Parapet from FFE	24.00
Datum Parapet	2,276.00
Joist bearing	18.85
Deck+insul.	0.25
RTU+curb	4.92
RTU Ht	2,276.02
Viewpoint elevation	2,254.00
Viewpoint ht to Parapet ht	22.00
Viewpoint ht to RTU ht	22.02
Distance viewpoint to parapet	460.00
Distance viewpoint to RTU	500.00
X	23.91
Amount visible over parapet (ft)	-1.89
Visibility in inches	0

Siteline #H to RTU-18	Ft
FFE	2,252.00
Parapet from FFE	24.00
Datum Parapet	2,276.00
Joist bearing	18.41
Deck+insul.	0.25
RTU+curb	4.92
RTU Ht	2,275.58
Viewpoint elevation	2,254.00
Viewpoint ht to Parapet ht	22.00
Viewpoint ht to RTU ht	21.58
Distance viewpoint to parapet	425.00
Distance viewpoint to RTU	460.00
X	23.81
Amount visible over parapet (ft)	-2.23
Visibility in inches	0

Siteline #H to RTU-16	Ft
FFE	2,252.00
Parapet from FFE	24.00
Datum Parapet	2,276.00
Joist bearing	19.29
Deck+insul.	0.25
RTU+curb	4.92
RTU Ht per field	2,276.46
Viewpoint elevation	2,254.00
Viewpoint ht to Parapet ht	22.00
Viewpoint ht to RTU ht	22.46
Distance viewpoint to parapet	420.00
Distance viewpoint to RTU	540.00
X	28.29
Amount visible over parapet (ft)	-5.83
Visibility in inches	0

Siteline #H to RTU-17	Ft
FFE	2,252.00
Parapet from FFE	24.00
Datum Parapet	2,276.00
Joist bearing	19.98
Deck+insul.	0.25
RTU+curb	4.92
RTU Ht	2,277.15
Viewpoint elevation	2,254.00
Viewpoint ht to Parapet ht	22.00
Viewpoint ht to RTU ht	23.15
Distance viewpoint to parapet	460.00
Distance viewpoint to RTU	540.00
X	25.83
Amount visible over parapet (ft)	-2.68
Visibility in inches	0

Visibility is calculated by similar triangles.
 Assuming no construction and/or landscaping between viewpoint and Target.
 Visibility beyond indicated points has not been reviewed.

SIGHTLINE INFORMATION WORKSHEET	ROOF TOP UNITS
PROJECT: Scottsdale North	9000.001.00
date: 3/20/00	

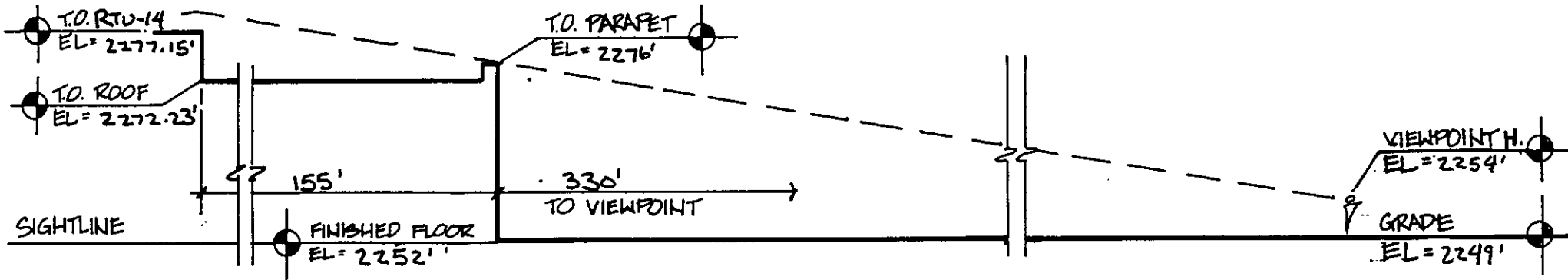
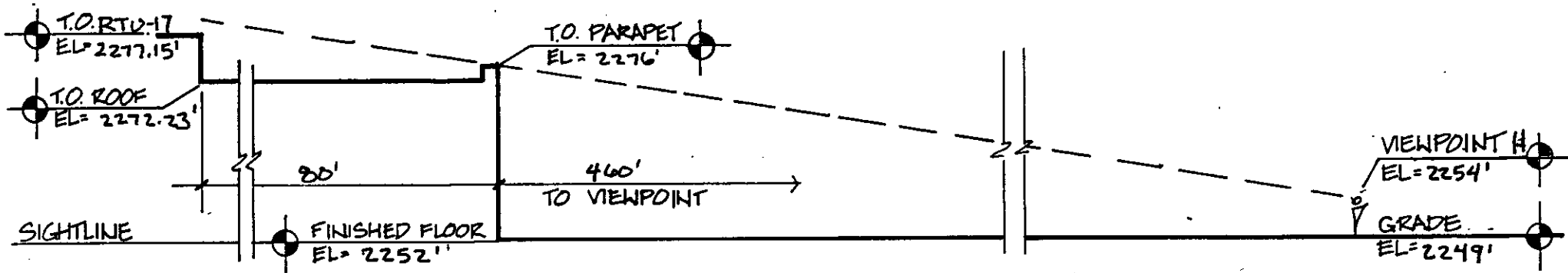
Siteline #H to RTU-10	Ft
FFE	2,252.00
Parapet from FFE	24.00
Datum Parapet	2,276.00
Joist bearing	20.30
Deck+insul.	0.25
RTU+curb	4.92
RTU Ht	2,277.47
Viewpoint elevation	2,254.00
Viewpoint ht to Parapet ht	22.00
Viewpoint ht to RTU ht	23.47
Distance viewpoint to parapet	428.00
Distance viewpoint to RTU	565.00
X	29.04
Amount visible over parapet (ft)	-5.57
Visibility in inches	0

Siteline #H to RTU-5	Ft
FFE	2,252.00
Parapet from FFE	24.00
Datum Parapet	2,276.00
Joist bearing	20.79
Deck+insul.	0.25
RTU+curb	4.17
RTU Ht	2,277.21
Viewpoint elevation	2,254.00
Viewpoint ht to Parapet ht	22.00
Viewpoint ht to RTU ht	23.21
Distance viewpoint to parapet	425.00
Distance viewpoint to RTU	595.00
X	30.80
Amount visible over parapet (ft)	-7.59
Visibility in inches	0

Siteline H to RTU-15	Ft
FFE	2,252.00
Parapet from FFE	25.33
Datum Parapet	2,277.33
Joist bearing	19.29
Deck+insul.	0.25
RTU+curb	4.92
RTU Ht per field	2,276.46
Viewpoint elevation	2,254.00
Viewpoint ht to Parapet ht	23.33
Viewpoint ht to RTU ht	22.46
Distance viewpoint to parapet	390.00
Distance viewpoint to RTU	505.00
X	30.21
Amount visible over parapet (ft)	-7.75
Visibility in inches	0

Siteline #H to RTU-14	Ft
FFE	2,252.00
Parapet from FFE	24.00
Datum Parapet	2,276.00
Joist bearing	19.98
Deck+insul.	0.25
RTU+curb	4.92
RTU Ht	2,277.15
Viewpoint elevation	2,254.00
Viewpoint ht to Parapet ht	22.00
Viewpoint ht to RTU ht	28.47
Distance viewpoint to parapet	330.00
Distance viewpoint to RTU	485.00
X	32.33
Amount visible over parapet (ft)	-3.86
Visibility in inches	0

Visibility is calculated by similar triangles.
 Assuming no construction and/or landscaping between viewpoint and Target.
 Visibility beyond indicated points has not been reviewed.

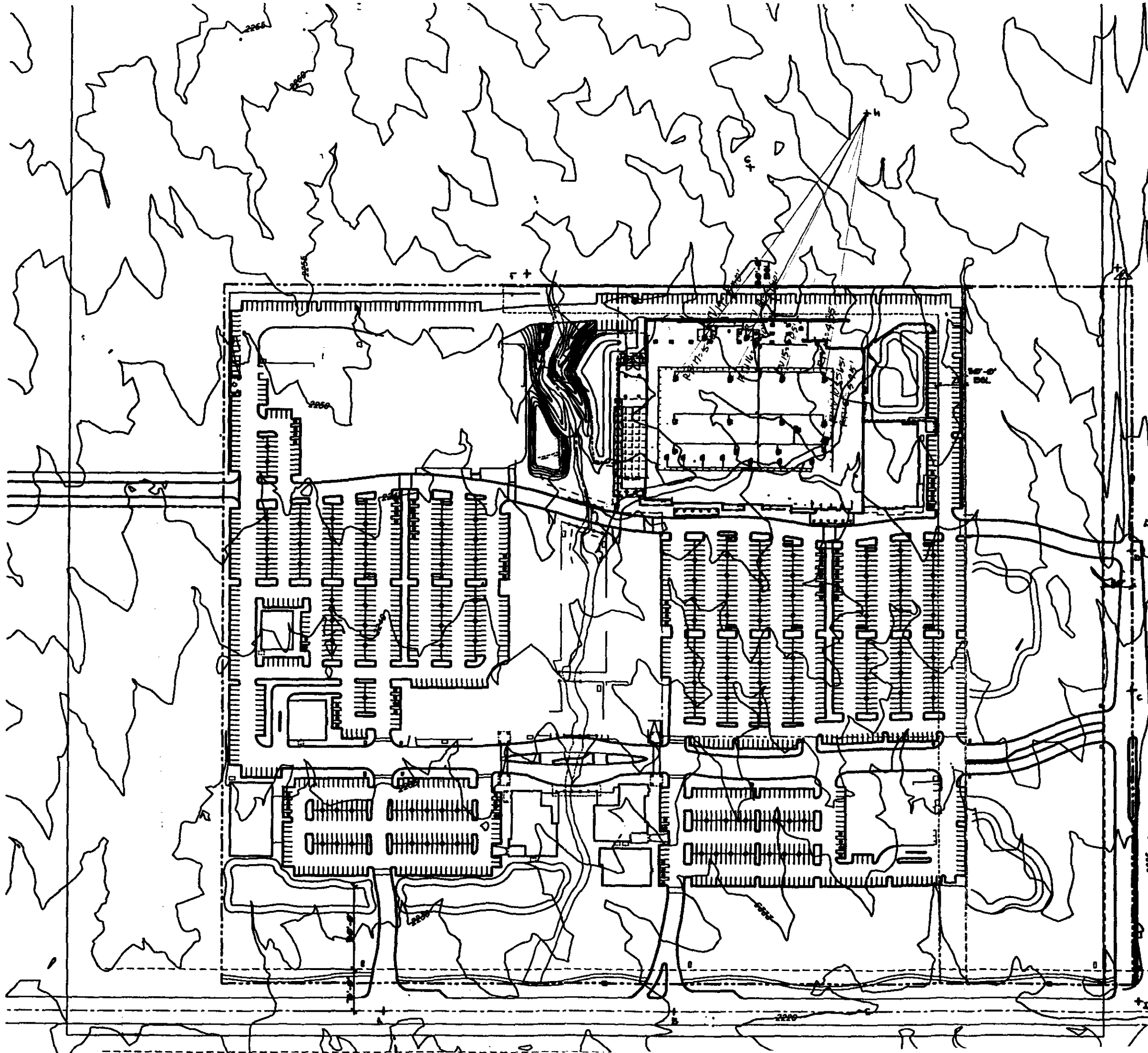


SIGHTLINE CALCULATIONS
T-1327 Far North Scottsdale

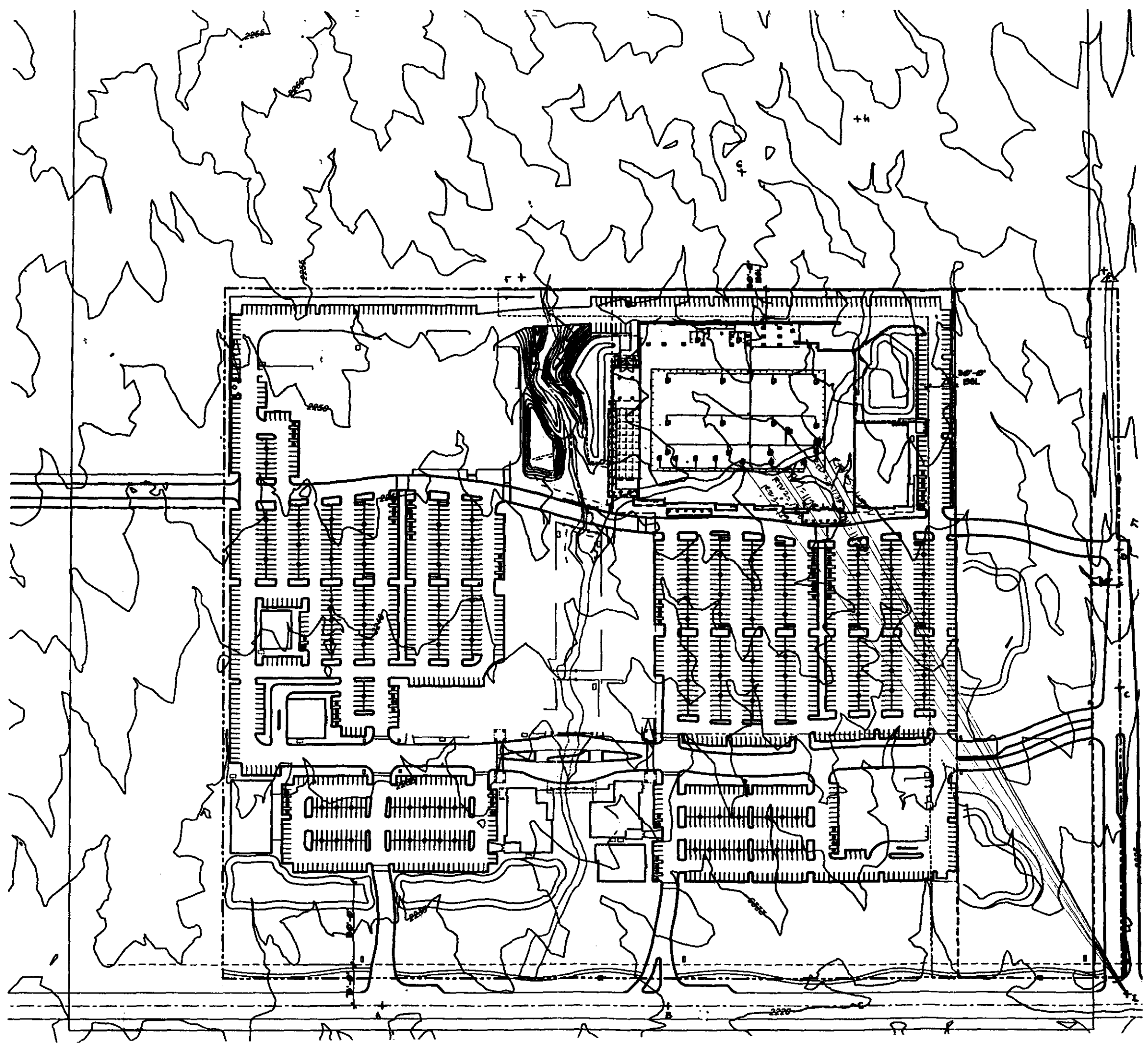
RSP + SLL

RSP Architects, Ltd. in association with
 Setzer Leach & Lindstrom, Inc.
 Architects • Engineers • Planners
 120 First Avenue North
 Minneapolis, Minnesota 55401
 FAX 612-338-6780
 612-338-0313

SITELING H
EL= 2,249



SITELINE I
EL= 2,222'



SIGHTLINE INFORMATION WORKSHEET	ROOF TOP UNITS
PROJECT: Scottsdale North	9000.001.00
date: 3/20/00	

Siteline #1 to RTU-5	Ft
FFE	2,252.00
Parapet from FFE	24.00
Datum Parapet	2,276.00
Joist bearing	20.79
Deck+insul.	0.25
RTU+curb	4.17
RTU Ht	2,277.21
Viewpoint elevation	2,227.00
Viewpoint ht to Parapet ht	49.00
Viewpoint ht to RTU ht	50.21
Distance viewpoint to parapet	1,010.00
Distance viewpoint to RTU	1,150.00
X	55.79
Amount visible over parapet (ft)	-5.58
Visibility in inches	0

Siteline #1 to RTU-23	Ft
FFE	2,252.00
Parapet from FFE	24.00
Datum Parapet	2,276.00
Joist bearing	20.96
Deck+insul.	0.25
RTU+curb	4.92
RTU Ht	2,278.13
Viewpoint elevation	2,227.00
Viewpoint ht to Parapet ht	49.00
Viewpoint ht to RTU ht	51.13
Distance viewpoint to parapet	1,010.00
Distance viewpoint to RTU	1,138.00
X	55.21
Amount visible over parapet (ft)	-4.08
Visibility in inches	0

Siteline #1 to RTU-1	Ft
FFE	2,252.00
Parapet from FFE	28.00
Datum Parapet	2,280.00
Joist bearing	21.09
Deck+insul.	0.25
RTU+curb	4.17
RTU Ht per field	2,277.51
Viewpoint elevation	2,227.00
Viewpoint ht to Parapet ht	53.00
Viewpoint ht to RTU ht	50.51
Distance viewpoint to parapet	1,040.00
Distance viewpoint to RTU	1,130.00
X	57.59
Amount visible over parapet (ft)	-7.08
Visibility in inches	0

Siteline #1 to RTU-7	Ft
FFE	2,252.00
Parapet from FFE	24.00
Datum Parapet	2,276.00
Joist bearing	20.90
Deck+insul.	0.25
RTU+curb	4.92
RTU Ht	2,278.07
Viewpoint elevation	2,227.00
Viewpoint ht to Parapet ht	49.00
Viewpoint ht to RTU ht	51.07
Distance viewpoint to parapet	1,055.00
Distance viewpoint to RTU	1,178.00
X	54.71
Amount visible over parapet (ft)	-3.64
Visibility in inches	0

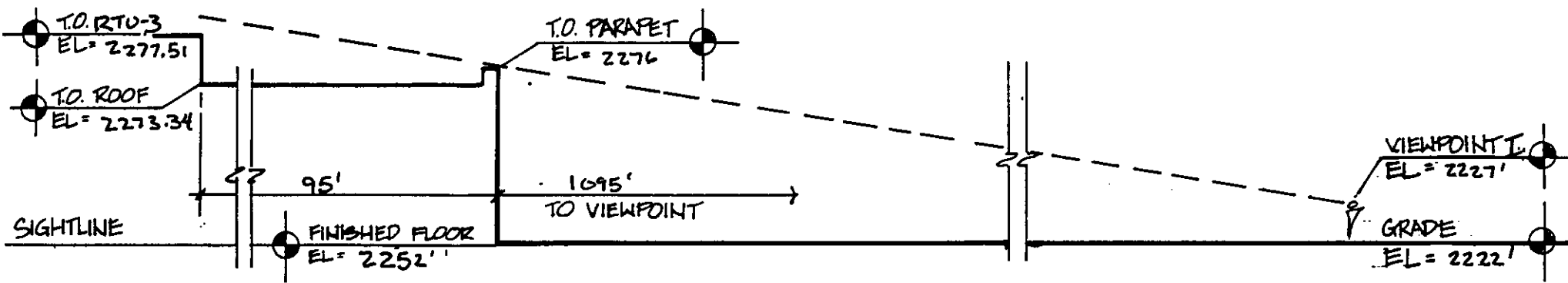
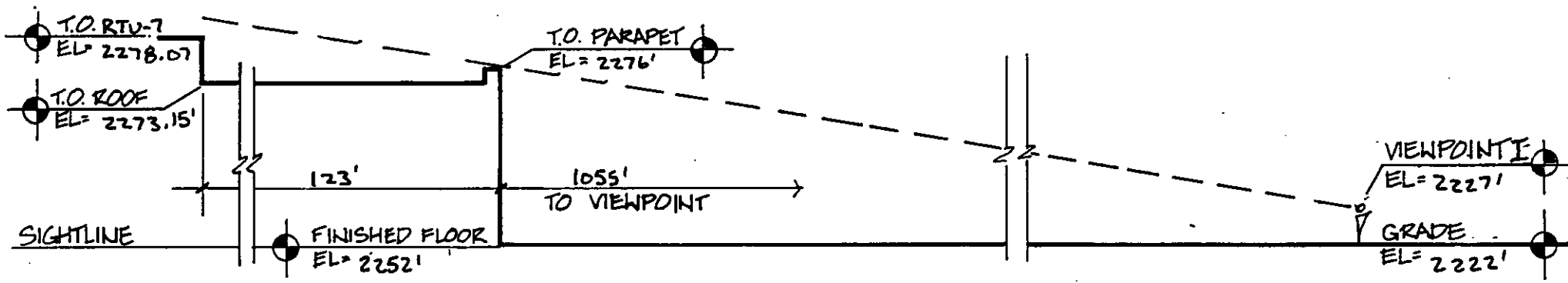
Visibility is calculated by similar triangles.
 Assuming no construction and/or landscaping between viewpoint and Target.
 Visibility beyond indicated points has not been reviewed.

SIGHTLINE INFORMATION WORKSHEET	ROOF TOP UNITS
PROJECT: Scottsdale North	9000.001.00
date: 3/20/00	

Siteline #1 to RTU-3	Ft
FFE	2,252.00
Parapet from FFE	24.00
Datum Parapet	2,276.00
Joist bearing	21.09
Deck+insul.	0.25
RTU+curb	4.17
RTU Ht	2,277.51
Viewpoint elevation	2,227.00
Viewpoint ht to Parapet ht	49.00
Viewpoint ht to RTU ht	50.51
Distance viewpoint to parapet	1,095.00
Distance viewpoint to RTU	1,190.00
X	53.25
Amount visible over parapet (ft)	-2.74
Visibility in inches	0

Siteline #1 to RTU-2	Ft
FFE	2,252.00
Parapet from FFE	24.00
Datum Parapet	2,276.00
Joist bearing	21.09
Deck+insul.	0.25
RTU+curb	4.17
RTU Ht	2,277.51
Viewpoint elevation	2,227.00
Viewpoint ht to Parapet ht	49.00
Viewpoint ht to RTU ht	50.51
Distance viewpoint to parapet	1,050.00
Distance viewpoint to RTU	1,160.00
X	54.13
Amount visible over parapet (ft)	-3.62
Visibility in inches	0

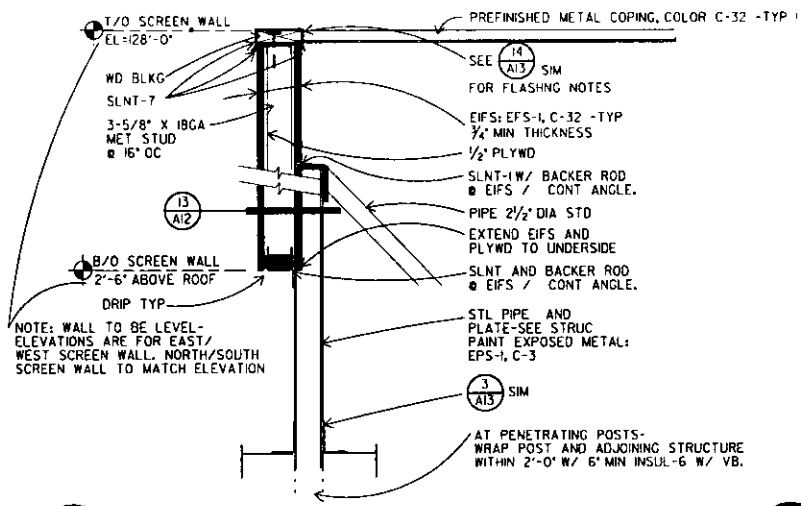
Visibility is calculated by similar triangles.
 Assuming no construction and/or landscaping between viewpoint and Target.
 Visibility beyond indicated points has not been reviewed.



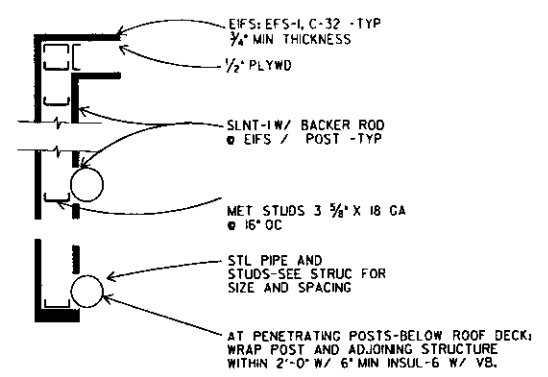
SIGHTLINE CALCULATIONS
 T-1327 Far North Scottsdale

RSP + SLL

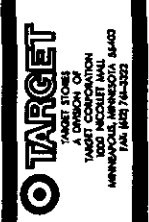
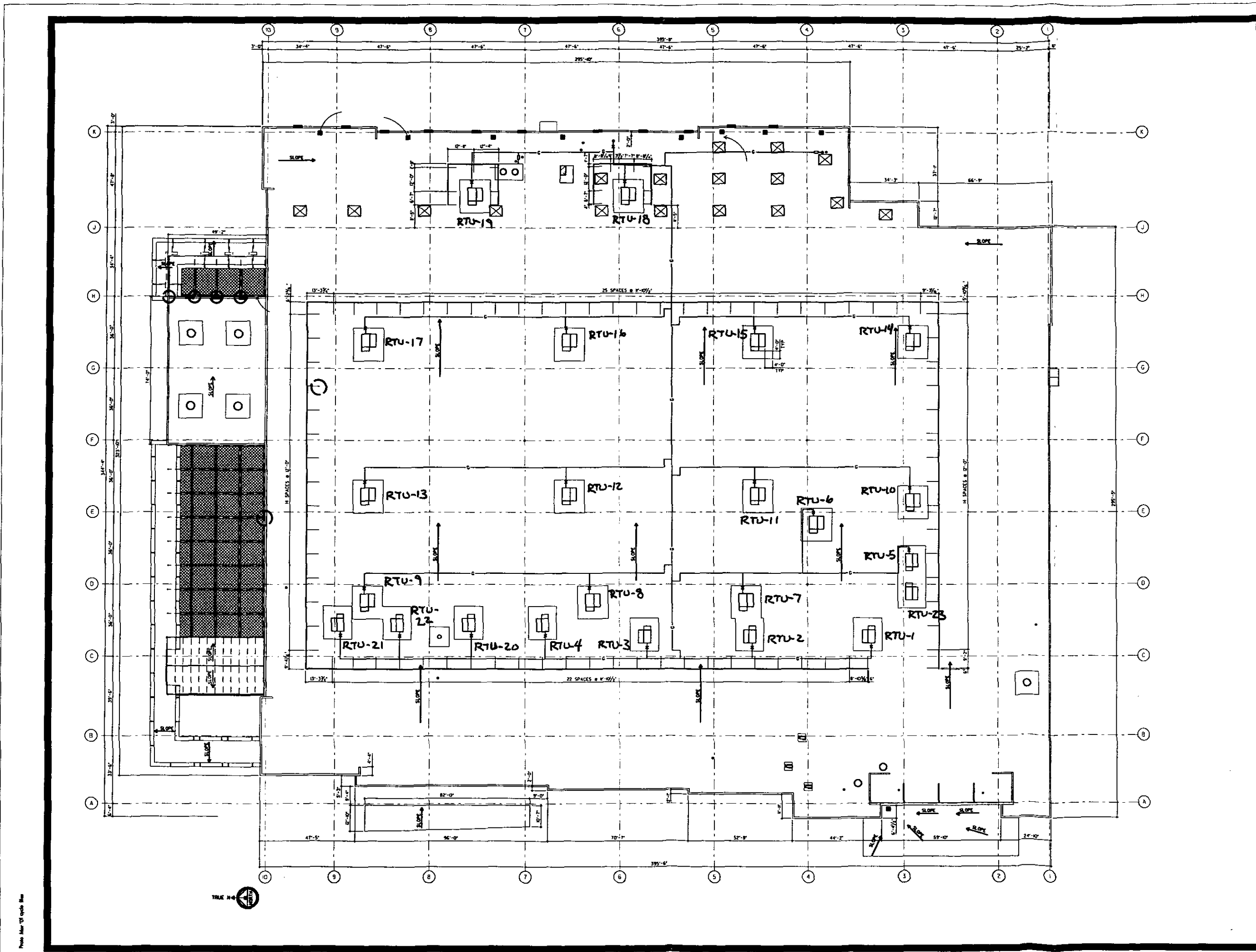
RSP Architects, Ltd. in association with
 Setzer Leach & Lindstrom, Inc.
 Architects • Engineers • Planners
 120 First Avenue North
 Minneapolis, Minnesota 55401
 FAX 612-338-8780
 612-338-0313



12 ROOFTOP SCREEN WALL
A12 1/2" = 1'-0"



13 ROOFTOP SCREEN WALL- PLAN DETAILS
A12 1/2" = 1'-0"



RSP+JLL
 RSP+JLL
 1000 W. WASHINGTON AVE
 SUITE 100
 CHICAGO, IL 60601
 TEL: 312.337.7700
 FAX: 312.337.7701

DATE	DESCRIPTION

DATE	DESCRIPTION

T-1327 P2001
 201638 RR

FAR NORTH SCOTTSDALE
 COTTRELL RD. & ASHLEY WILDS DR
 SCOTTSDALE, AZ 85258

ROOF PLAN

A4