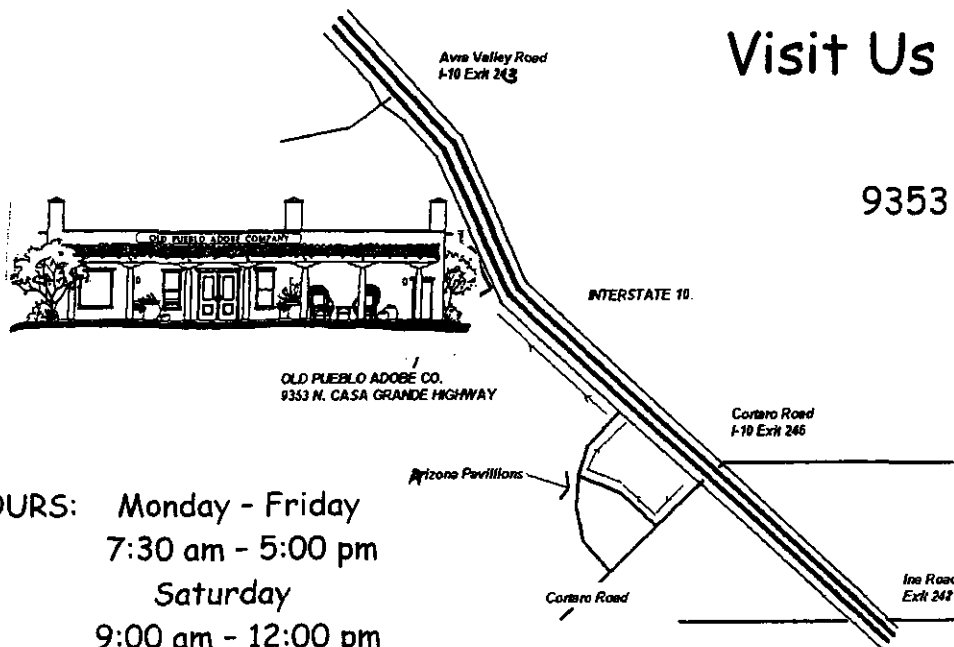


OLD PUEBLO
Adobe
COMPANY
A division of ADOBE CO, INC.

ARIZONA'S largest manufacturer of adobe products since 1984, Old Pueblo's reliable quality and service have helped us grow to one of the nation's top producers of authentic, sun dried, mud adobe. We carry a full line of unique Southwestern building materials, Mexican Ranchero furniture and accessories, and a showroom full of ideas for your next project.

Visit Us At:

9353 N Casa Grande Hwy
Tucson, AZ

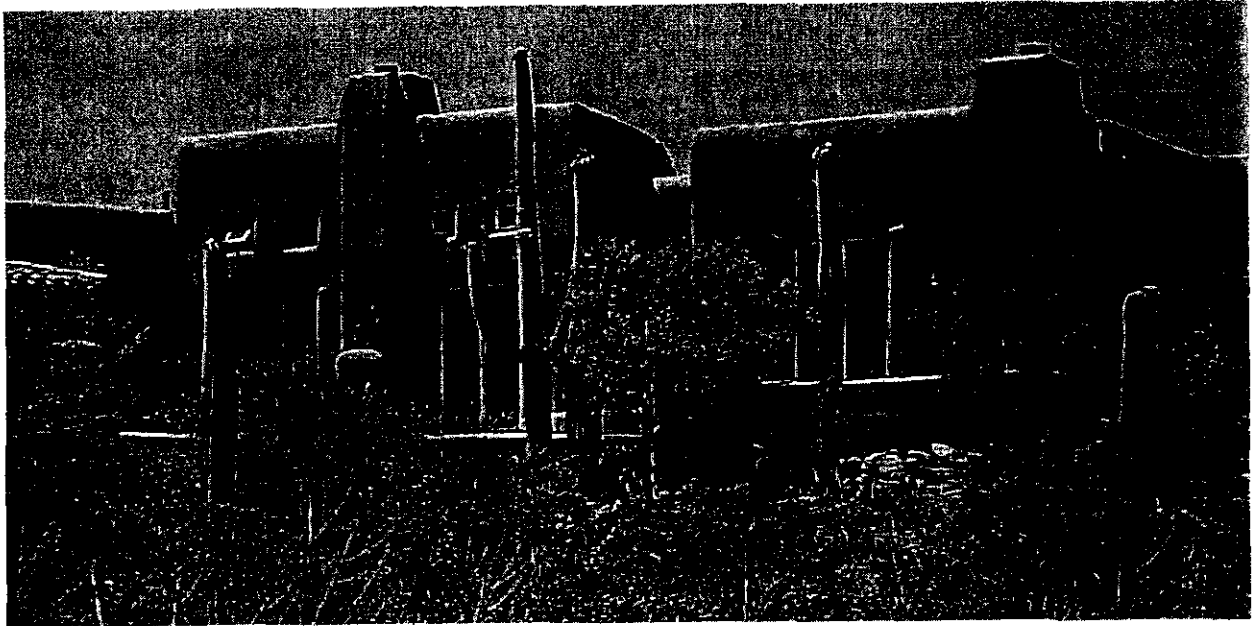


HOURS: Monday - Friday
7:30 am - 5:00 pm
Saturday
9:00 am - 12:00 pm

Or Online At:
www.oldpuebloadobe.com

Quality Adobe Products
Authentic Southwestern Building Materials

ADOBE



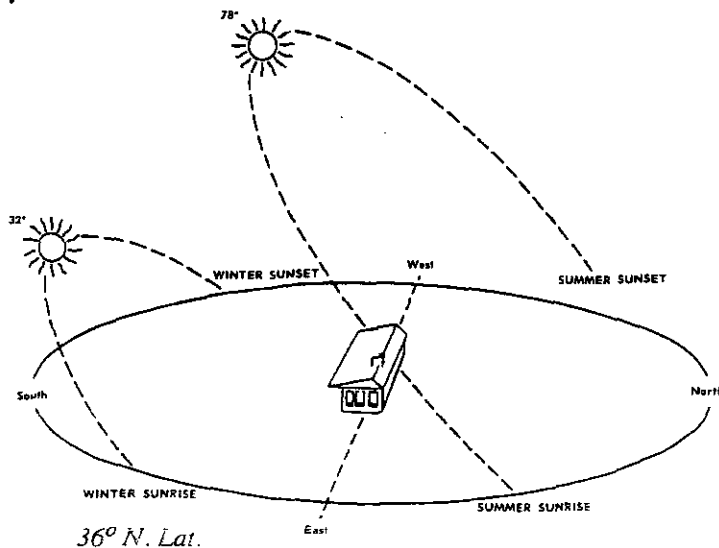
OLD PUEBLO ADOBE COMPANY is Arizona's largest and most reputable supplier of authentic adobe products. Our Adobe is made only of the finest quality materials, carefully blended to assure the strongest, most durable sun dried adobe possible. Our adobe products meet all uniform building code standards, and we guarantee that breakage will not exceed 1% at the time of delivery.

The oldest building material known, adobe's long history qualifies its endurance. With asphalt stabilization techniques used industry wide for over 60 years, adobe is no longer limited to simple, rural structures, but is used throughout the Southwest in the finest homes and commercial structures as well.

The advantages of building with stabilized adobe are many...wall surfaces both inside and out are finished when the mason completes his work. Plaster, paint or sealers are unnecessary. Stabilized adobe is moisture resistant, termite proof, fireproof, and it's insulating/thermal properties are high.

Adobe, unlike other building materials which are lightweight, has the ability to store heat (thermal mass) as well as resist the transfer of it (insulate). It is this thermal mass property which has made adobe ideal for desert climates, where wide temperature swings from day to night are normal. Adobe absorbs heat during the day and releases it at night. This enables an adobe structure to maintain a comfortable temperature without using large amounts of energy to heat or cool it.

The best designed adobe buildings use this storage principle combined with south facing windows for winter heating. In the summer, south facing windows should be shaded to reduce heat from entering the space. Night ventilation, when it is cooler outside, allows the release of any heat absorbed by the walls during the day.



ADOBE PRICE LIST

2003

THREE STANDARD SIZES:

8x4x16" .71 each
(38 Per Pallet)

10x4x14" .82 each
(32 Per Pallet)

12x4x16" 1.05 each
(24 Per Pallet)

ADOBE ARE FULL SIZE (not nominal dimension). Adobe meets or exceeds all Uniform Building Code requirements. Breakage is guaranteed not to exceed 1% at the time of delivery. VOLUME DISCOUNTS BY QUOTATION.



We manufacture a variety of half sizes, veneer, bond beam, corner and custom adobe shapes to make adobe laying easier:

3x4x12"	.65 each (110 Per Pallet)
4x4x16"	.58 each (76 Per Pallet)
6x4x16"	.65 each (48 Per Pallet)
10x4x16"	1.15 each (24 Per Pallet)
12x4x12"	1.15 each (30 Per Pallet)
12x4x16"	CENTER, END OR SIDE VOID 1.15 each (24 Per Pallet)



ADOBE MORTAR MIX & STABILIZER

PRICE LIST 2003

ADOBE MORTAR MIX is carefully screened and blended to match *Old Pueblo's* adobe block. Mortar mix is shipped in truck loads up to 20 yards to your site, and delivered dry for mixing with asphalt emulsion and water.

\$22. Per Cubic Yard
(minimum 1 yard order)

ASPHALT STABILIZER is available in 5 gallon containers or 55 gallon drums, and is used with dry adobe mortar mix for stabilized adobe mortar to match *Old Pueblo's* adobe.

5 gallon containers \$14.50 each
55 gallon drums \$94.60 each

Asphalt stabilizer is shipped in 55 gallon closed top drums, and may be shipped on our delivery truck with adobe. A refundable deposit will be charged for each drum and nozzle. 5 gallon containers are non-refundable.

DIRECTIONS FOR MIXING MORTAR
SUPPLIED UPON DELIVERY

ADOBE MATERIALS QUANTITIES CHART

Use this convenient chart to determine quantities
for your project:

Wall Thickness	Adobe Size	Qty. Adobe/ Sq. Ft. of Wall	Cu. Yards Mortar/1000 Adobe
8	8x4x16	1.74	3.8
10	10x4x14	1.97	4.3
12	12x4x16	1.74	5.8
14	10x4x14	2.69	4.3
16	8x4x16	3.48	3.8
16	12x4x16	2.27	5.8
20	10x4x14	3.94	4.3
24	8x4x16	5.22	3.8


Asphalt emulsion ratio for mortar is 10 gallons per cubic yard

IMPORTANT...Old Pueblo's adobe is a full 4" thick (you will use up to 30% fewer of our block than other manufacturers'). **BREAKAGE IS GUARANTEED** not to exceed 1% at time of delivery....no need to purchase extra!

The asphalt ratio is for **OLD PUEBLO ADOBE COMPANY'S** Mortar Mix only. This mix produces mortar designed to match *Old Pueblo's* block **ONLY** and complies with Building Code Requirements without additional testing.

VIGAS & LATILLAS

LODGEPOLE PINE VIGAS & LATILLAS are preferred by Southwestern home builders... naturally dry & well seasoned, with minimal taper. Lodgepole vigos are the perfect building material for your authentic Southwestern home.

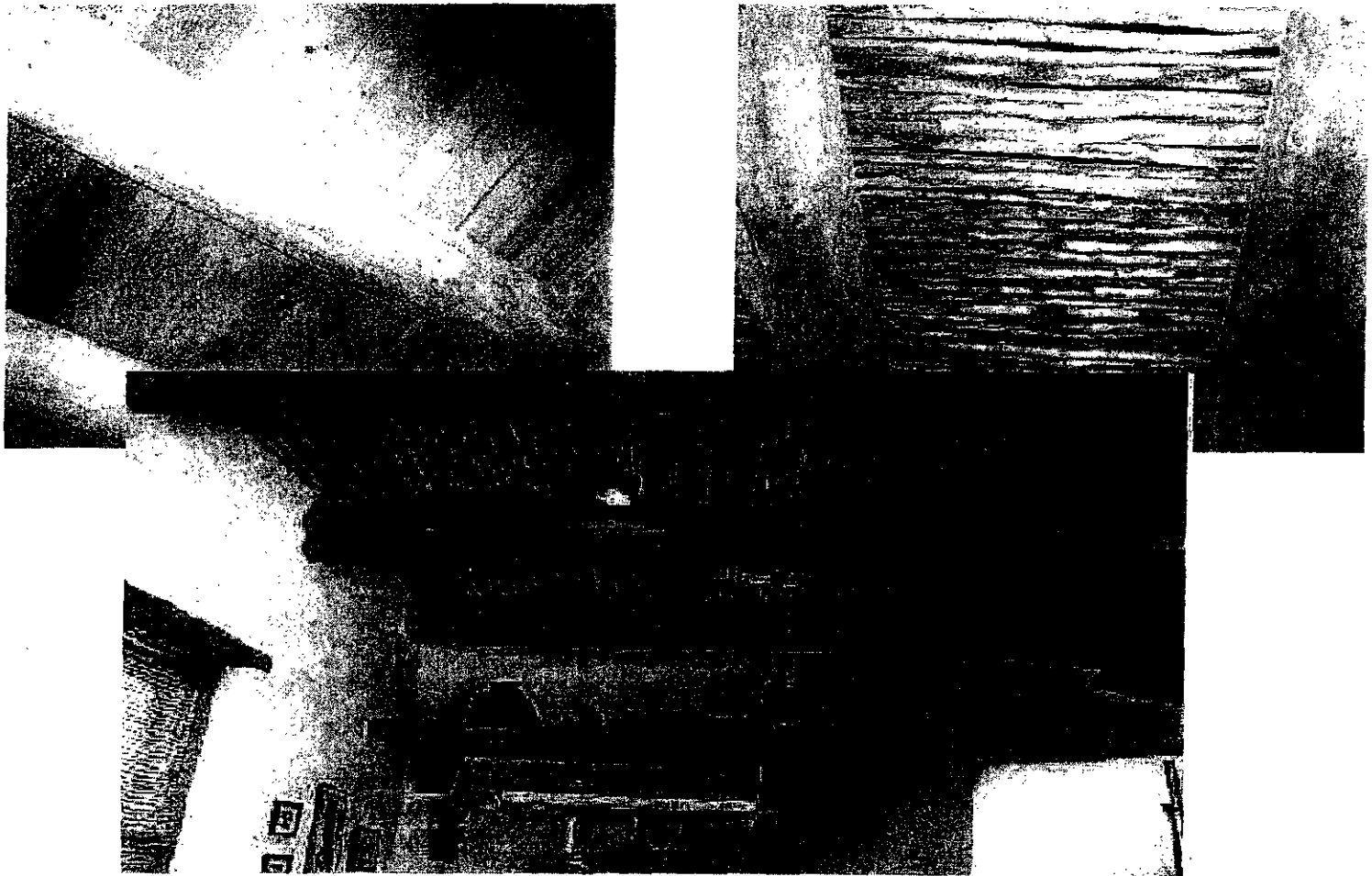


PEELED TO ORDER... our vigos are hand draw-knifed to your specifications. Choose from full peeled, skip peeled (some bark left on for a "pinto" look), or unpeeled with full bark on.

SIZING/HOW TO ORDER...All vigos & latillas are measured by diameter at the TIP (small end). Diameter may vary +/- 1". Taper is minimal at approx. 1" per 10'. Vigos are available in any 1" increment in diameter from 3" to 24". Viga lengths are available in even foot lengths only; shortest length is 8'. Latillas are available in diameters of 1 1/2" to 2", and lengths of 8', 12', and 16'.



FOR USE AS STRUCTURAL BEAMS...Grade stamping (at #2 and better) is available upon request to meet building code requirements. Need help? We're happy to help you size vigas, or with design ideas for an authentic Southwestern look.



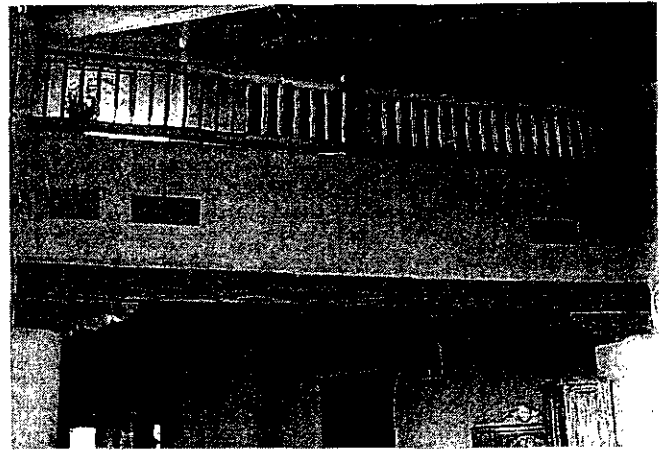
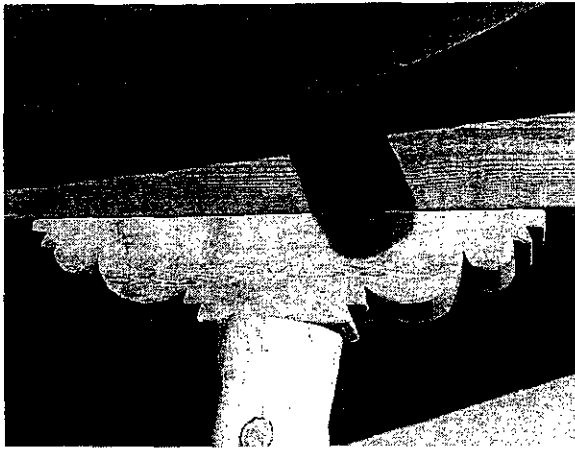
PLEASE NOTE...that our vigas and latillas are the real thing. They are natural whole trees changed only by the peeling of the bark, and are not perfect. As drying of the wood occurs in our Arizona climate, checking and shrinking will occur. Unlike machined "peeler poles", our vigas have character, knots and dryness checking. We assure you that Old Pueblo's vigas and latillas will offer an authentic look to your project.

Call us for a pricing quote today.

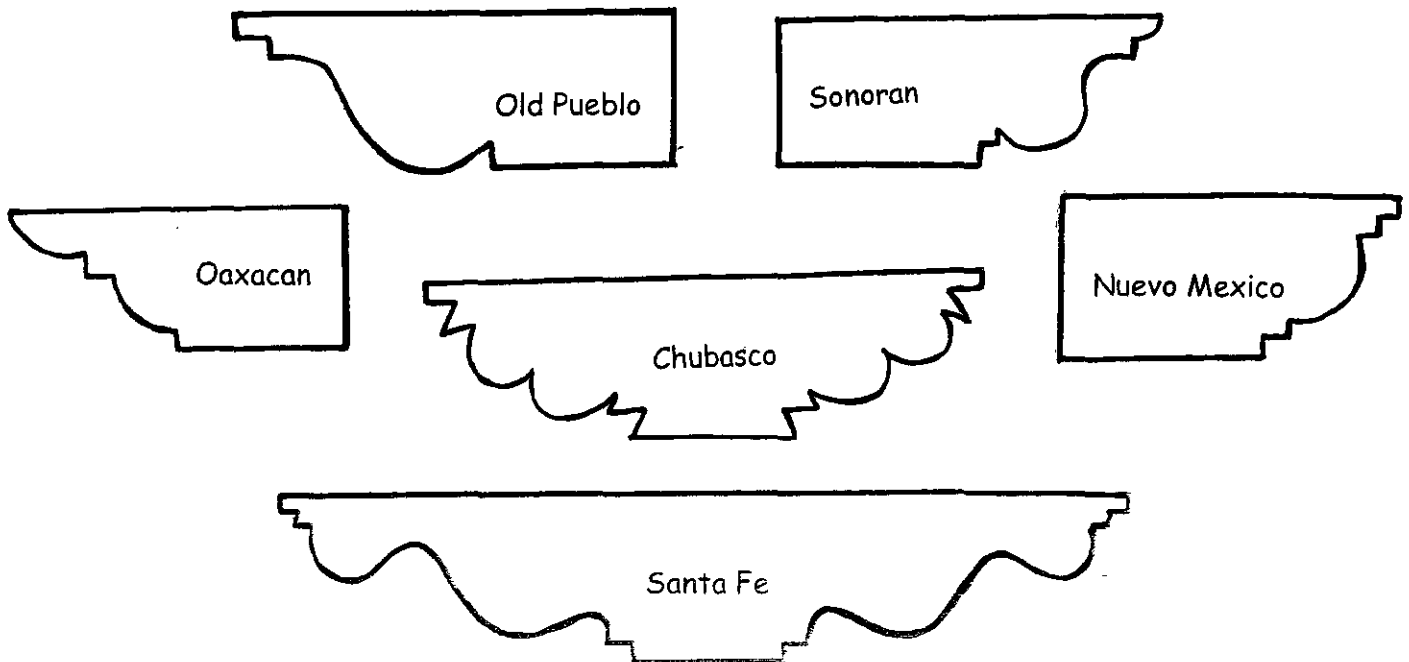


CORBELS & ROUGH SAWN BEAMS

OLD PUEBLO'S CORBELS are cut from the finest quality FREE OF HEART CENTER Rough Sawn Douglas Fir. A variety of sizes & styles are on hand, as well as any size cut to your specifications.

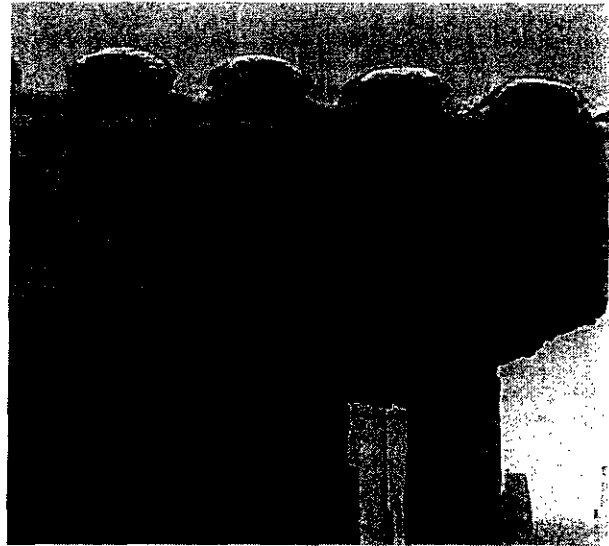
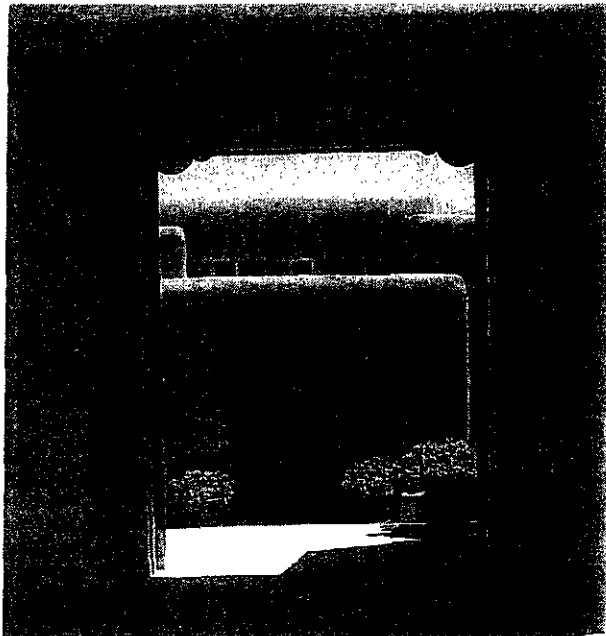


SIX STYLES TO CHOOSE FROM
ALL STYLES AVAILABLE IN
FULL, HALF, OR 90° CUTS



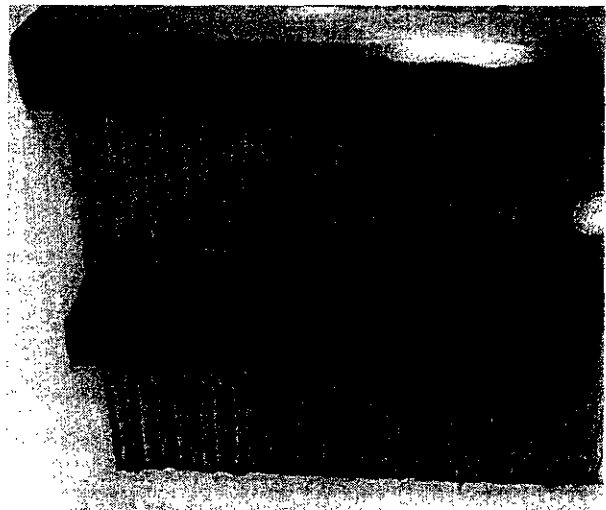
ROUGH SAWN BEAMS & TIMBERS are cut from premium quality stock...#1 & better Douglas Fir, or Free of Heart Center Douglas Fir.

Rough Sawn Beams & Timbers are available in any size from 2x6 to 14x16. Beams are sold in even foot lengths only, the shortest is 8 ft.



Also available...Rough Sawn Decking in a variety of widths from 1x4 to 1x12. The rough decking creates an attractive and affordable ceiling above rough sawn or hand hewn timbers or vigas.

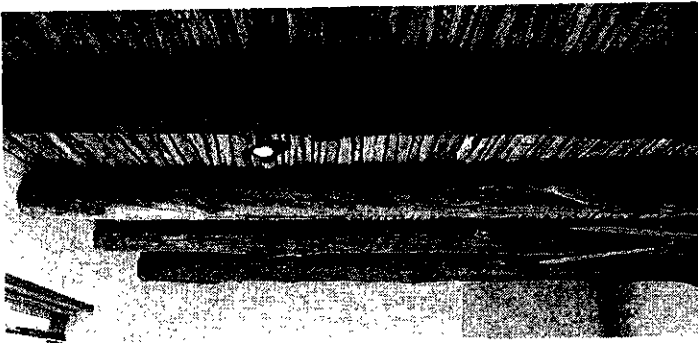
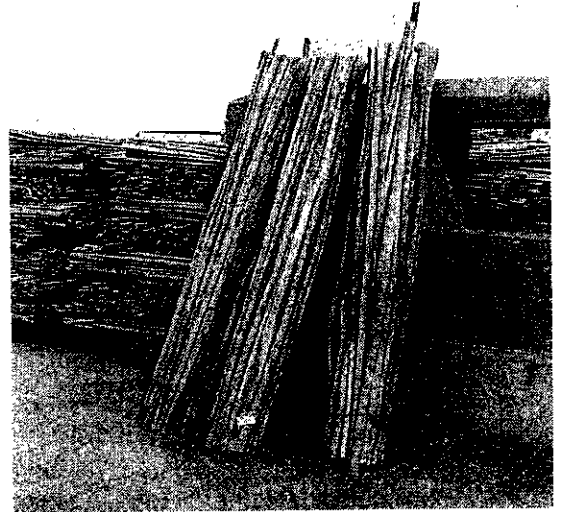
HAND HEWN BEAMS, our specialty, offers a traditional Southwestern look. Hewning is done here at our yard, where each timber is carefully worked by hand with an adze, edges carefully draw-knifed and sanded to a soft, "hand chinked" beam look.



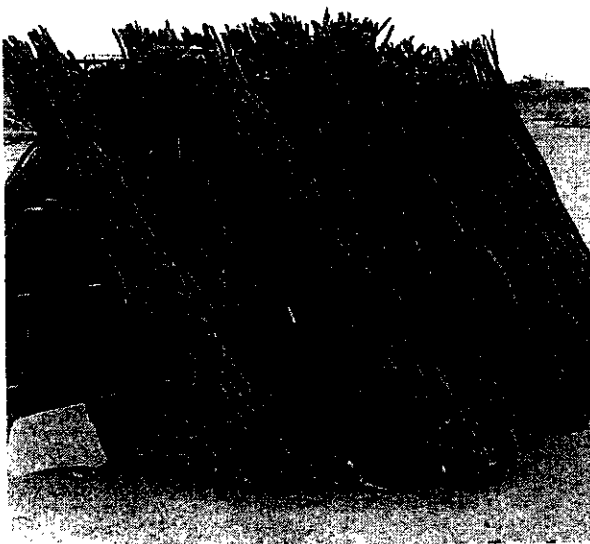
SOUTHWESTERN WOOD PRODUCTS

SAGUARO RIBS are available 6' bundles of 50 pieces each. The size of each rib will vary, but are approximately 1" diameter.

6' Bundles unfumigated	\$42.00 each
6' Bundles fumigated	\$47.00 each
6' Individual Ribs fumigated	\$2.00 each

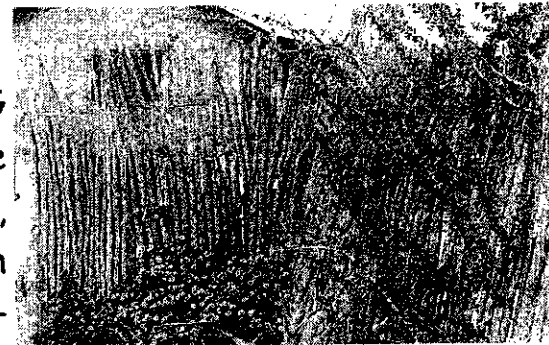


Colors vary with shades of gray, tan, and gold in each bundle. Saguaro ribs are a natural material!! They are not perfect in any way, except for their natural beauty.



OCOTILLO FENCING is pre-wired and can be planted for a living, blooming fence. Each section is approximately 4 1/2' - 5' long, and 6' tall.

\$40.00
each panel

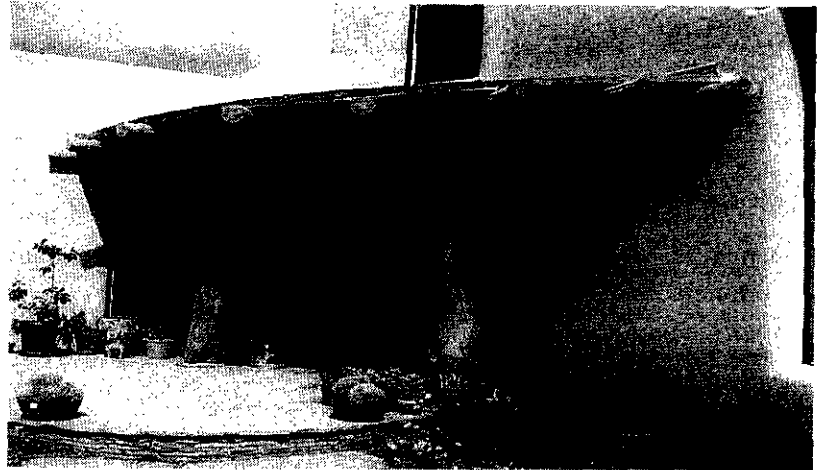




FORKED MESQUITE POSTS are for use as a rustic Ramada post. Mesquite posts are not straight...all having unique character. Mesquite is unpeeled.

6"-8" x 10' Forked Mesquite Post \$65.00 each

Piñon Pine Posts are available peeled or unpeeled and offer unique character. Piñon is not straight. Branch knobs are left on for an authentic look. Prices based on diameter and length. Please call for a quote today.



HAND CARVED POSTS are first quality Douglas Fir and are available

6" Double Spiral	\$210 each
6" Triple Spiral	\$225 each
6" Quadruple Spiral	\$250 each
6" Geometrical Spiral	\$210 each
6" Triple Square Spiral	\$210 each
6" Octagonal Post	\$145 each

8" Triple Spiral	\$260 each
8" Quadruple Spiral	\$275 each
8" Octagonal Post	\$165 each

Larger sizes, longer lengths also available



CUSTOM FIREPLACE MANTLES

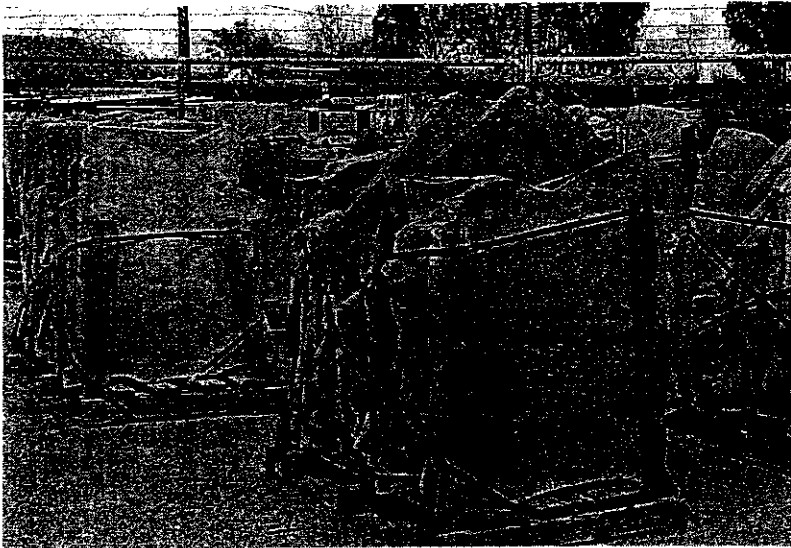
Choose from a variety of mantle styles to fit your décor...

- Rope Carved Mantle w/Corbels to match our Spiral Posts
- Rustic Viga Slab Mantle w/Viga "Corbels"
- Hand Hewn Timber Mantle w/ matching Corbels

Prices are subject to change without notice.

Old Pueblo Adobe Company * 9353 North Casa Grande Hwy * Tucson, AZ 85743 * (520) 744-9268 * (800) 327-4705 * Fax (520) 744-8057

FLAGSTONE



ARIZONA FLAGSTONE is available in a variety of colors:

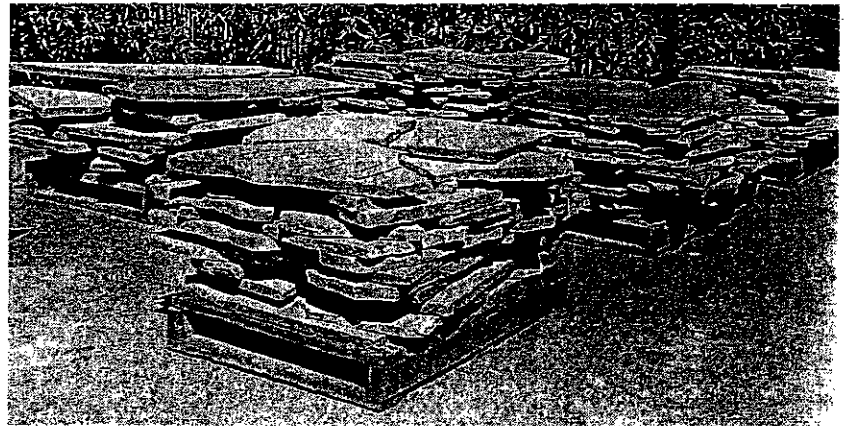
Rose
Peach
Oak
Sedona Red

FULL UNSORTED PALLETS:

LARGE (each pallet is approx. 1 1/2 tons/1 1/2 - 2" Thick)	\$175 per ton
LARGE 1" Minus (each pallet is approx. 1 1/2 tons)	\$235 per ton
MEDIUM/SMALL (each pallet is approx. 2 tons)	\$140 per ton



Yield will be approximately 120 to 140 Sq. Ft. per ton.

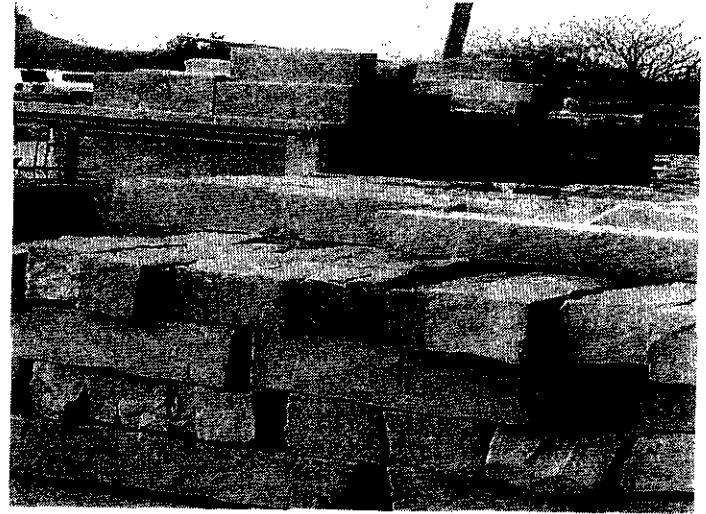


SORTED FOR THICKNESS & SIZE

Half ton minimum purchase

MEDIUM pieces only	\$155 per ton
SMALL pieces only	\$75 per ton

SPECIALTY STONE ALSO AVAILABLE



Moss Rock	\$210 per ton
Moss Rock Veneer	\$357 per ton
Veneer Cut Stone	\$205 per ton
Parapet Cap Cut Stone	\$4.75 per lin. Ft.

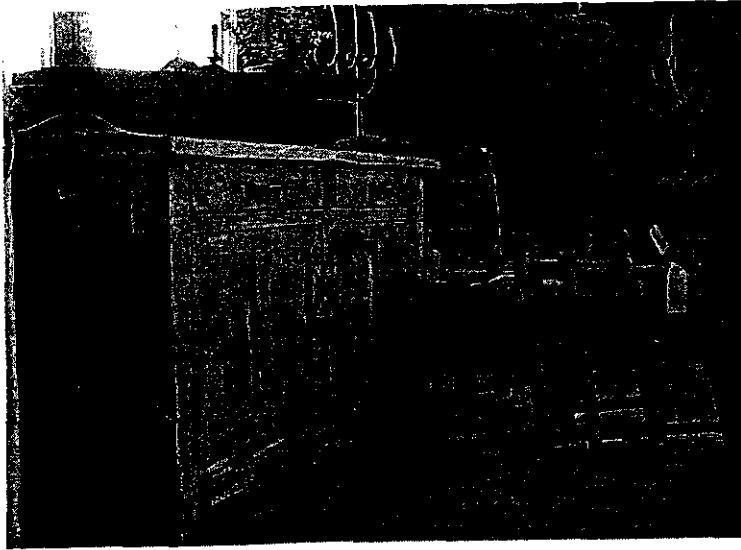
Custom Cut Stone Available in Any Size

Arizona Flagstone is composed of naturally occurring stone. Flagstone is used for patios, floors, fireplaces, caps and sills. Wearing, flaking, color variation, and efflorescence may occur in some places. These are inherent qualities in natural stone.

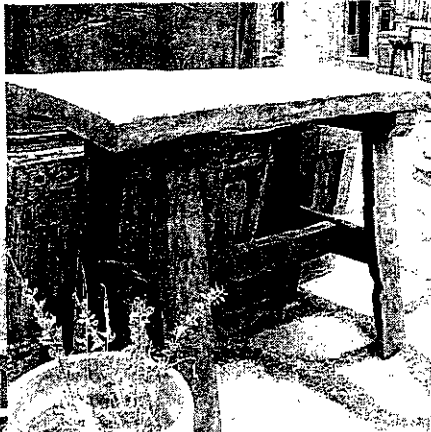


Prices subject to change without notice.

FURNISHINGS & ACCESSORIES



We feature a variety of unique, Mexican Ranchero furniture and accessories...Mesquite dining tables, Mesquite & Pine doors & windows, trasteros, benches, cabinets, and much more. Furniture loads arrive monthly and we never know what will be on a truck. You can be sure each piece is colorful and a great addition to any décor.



Many of our furnishings are old, original pieces. Some are rebuilt using old door panels, old mesquite gates, barn timbers & posts. "New" old pieces are carefully crafted, using traditional, Old World carpentry techniques.



Handcrafted by the Tarahumara Indians of Chihuahua, Mexico, this array of grain baskets, pottery, and wooden bateas will add colorful accent to any Southwestern home.

We stock hard-to-find tools... Adobe spoons for finishing adobe wall, quality axes and draw knives for viga peeling.

BOOKS on adobe, Southwestern architecture and design, furniture making and more



are in stock...with new titles arriving regularly. We carry the largest selection of adobe related books and magazines you'll find!

ALWAYS IN STOCK... the current issue of **ADOBE BUILDER** Magazine (our industry's #1 trade publication). All back issues also on hand.