

see Economic
Vitality Element

- Restore habitat in degraded areas (burned, grazed, vehicular damage) of the McDowell Sonoran Preserve to its undisturbed condition including plant species diversity and natural ecological processes.
- Support tourism in the community by providing public scenic-outdoors-educational-recreational opportunities for visitors.
- Designate viewsheds and consider them when approving development.
- Promote creative residential and commercial development techniques consistent with the Character Plan for an area, to further preserve meaningful and accessible open space.
- Relate the character of open spaces to the uses and character of different areas of the city.
- Preserve and integrate visual and functional connections between major city open spaces into the design of development projects.
- Evaluate open space design with these primary determinants: aesthetics, public safety, maintenance needs, water consumption, drainage considerations, and multi-use and desert preservation.
- Integrate utilities and other public facilities sited in open spaces into the design of those open spaces, with consideration given to materials, form, and scale.
- Protect the visual quality of open space, unique city characteristics, and community landmarks.
- Preserve scenic views and vistas of mountains, natural features, and rural landmarks.
- Protect and use existing native plants, the design themes of character areas within which they are sited, and response to local conditions in landscape designs.
- Permanently secure an interconnected open space system to maintain visual and functional linkages between major city open spaces. This system should include significant Scottsdale landmarks, major drainage courses, regional linkages and utility corridors.
- Apply a **Scenic Corridor** designation along major streets to provide for open space and opportunities for trails and paths. This designation should be applied using the following guidelines:
 - * There is a need for a landscaped buffer between streets and adjacent land uses.
 - * An enhanced streetscape appearance is desired.
 - * Views to mountains and natural or man-made features will be enhanced.
- Consider **Buffered Roadways** to provide the streetscape with a unique image that should also reduce the impacts of a major street on adjacent parcels. This type of designation is primarily an aesthetic buffer.
- Apply a **Desert Scenic Roadway** designation along the one mile and half mile streets within the Environmentally Sensitive Lands Ordinance (ESLO) district that are not classified as Scenic Corridors or Buffered Roadways to maintain and enhance open space along roadways in ESL areas.

see Open Space map
for locations
see Scenic Corridor
Design Guidelines

see Character and
Design Element

see Character and
Design Element

- Apply up to a 100 foot scenic buffer along streets within and adjacent to the Recommended Study Boundary of the McDowell Sonoran Preserve on undeveloped (as of 10/4/05) properties of 25 acres or larger.
- Promote project designs that are responsive to the natural environment, people's needs, site conditions, and indigenous architectural approaches to provide unique character for the city.
- Continue to work with developers in designing land use plans that respect the topography, view corridors, wildlife corridors, and open space that exists. Where possible, enhance existing viewsheds as areas are developed and redeveloped.

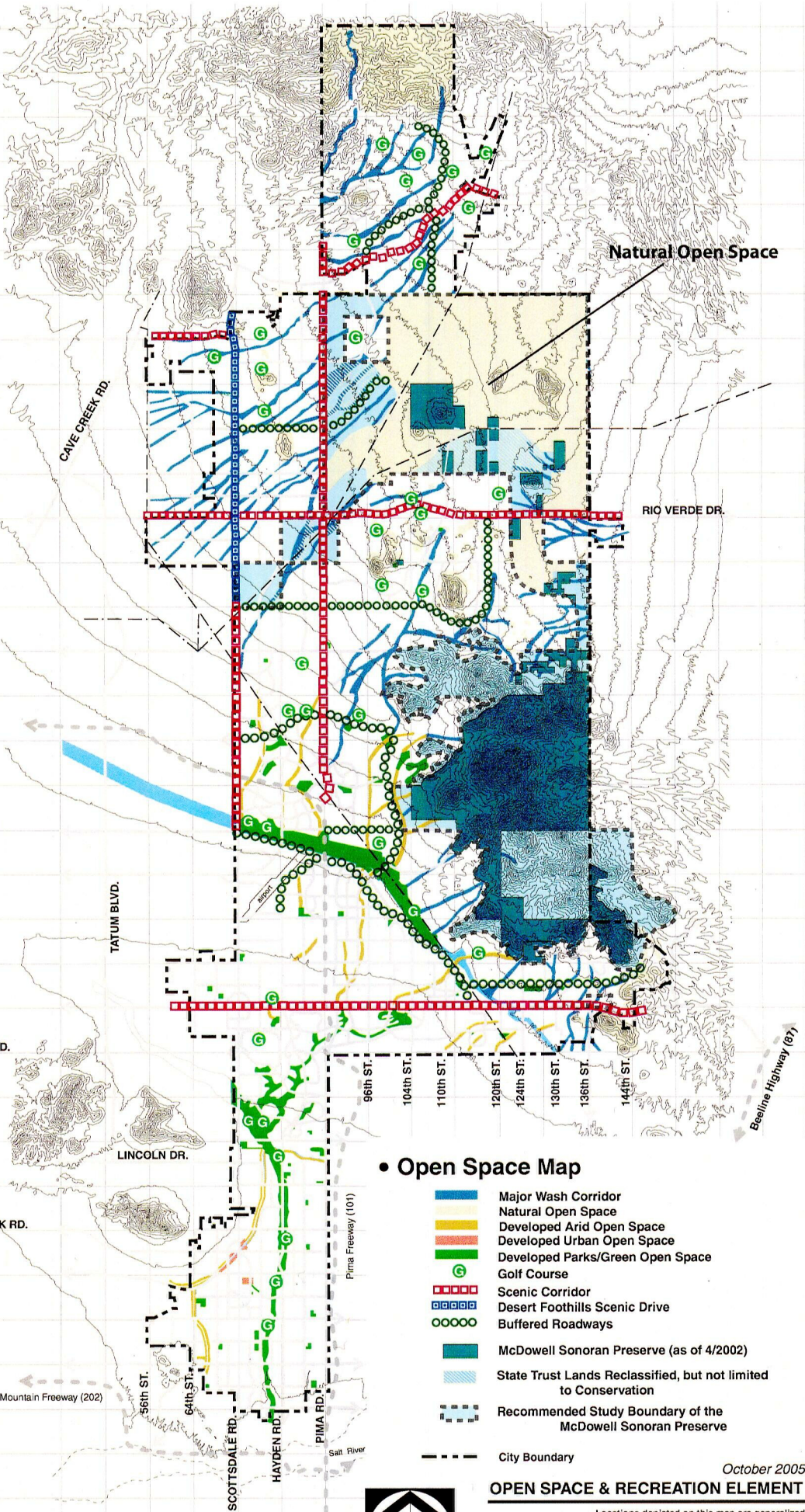
2. Manage a comprehensive open space program that is responsive to public need, delivers high quality customer service, and exemplifies the city's commitment to leadership in environmental affairs.

- Continue to encourage active citizen involvement in the development and management of open space.
- Provide a mechanism that receives and responds to public comments on the design, effectiveness and condition of sites and facilities.
- Provide a comprehensive program of consistent and effective operations and maintenance for all open space and facilities.
- Implement innovative policies and practices that support the city's leadership in environmental affairs.
- Investigate and implement techniques that minimize use of chemicals in maintaining turf and landscape materials in developed open space areas.
- Maintain all public open space and recreational facilities so they are safe and convenient for users.
- Maintain significant open space within the urban core of the city.
- Enhance the open space connections within Downtown.
- Create usable open spaces from existing street rights-of-way, widening sidewalks, realignment, developing trails, etc.
- Promote "docent" or "steward" programs for the city's public open spaces. Build upon the existing programs for the McDowell Sonoran Preserve, adopt a street, and Friends of the Scenic Drive.
- Promote three distinctive types of open spaces through acquisition, dedication, or "set aside":
 - * Passive natural open spaces that will preserve wildlife habitat and view corridors and sensitive historical/archeological sites, and provide areas for low impact recreational activities such as hiking, bicycling, mountain and rock climbing, and horseback riding.
 - * A system of contiguous open spaces, accessible from Scottsdale neighborhoods, that connect the desert, mountains, washes, and canal system.
 - * Park space and facilities for active recreational activities such as softball, tennis, basketball, volleyball, swimming, and equestrian pursuits.

**see case 1-GP-2004
for details**

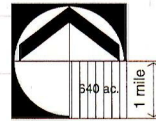


JENNY LYNN
 CIRCLE MOUNTAIN
 HONDA BOW
 ROCKAWAY HILLS
 DESERT HILLS DR.
 JOY RANCH RD.
 STAGECOACH PASS
 CAREFREE HWY.
 DOVE VALLEY RD.
 LONE MOUNTAIN RD.
 DIXILETA DR.
 DYNAMITE BLVD.
 JOMAX RD.
 HAPPY VALLEY RD.
 PINNACLE PEAK RD.
 DEER VALLEY RD.
 BEARDSLEY RD.
 UNION HILLS DR.
 BELL RD./FRANK LLOYD WRIGHT BLVD.
 GREENWAY RD.
 THUNDERBIRD RD.
 CACTUS RD.
 SHEA BLVD.
 DOUBLE TREE RANCH RD.
 McCORMICK PKWY.
 INDIAN BEND RD.
 McDONALD DR.
 CHAPARRAL/CAMELBACK RD.
 CAMELBACK RD.
 INDIAN SCHOOL RD.
 THOMAS RD.
 McDOWELL RD.
 McKELLIPS RD.



• Open Space Map

- Major Wash Corridor
- Natural Open Space
- Developed Arid Open Space
- Developed Urban Open Space
- Developed Parks/Green Open Space
- Golf Course
- Scenic Corridor
- Desert Foothills Scenic Drive
- Buffered Roadways
- McDowell Sonoran Preserve (as of 4/2002)
- State Trust Lands Reclassified, but not limited to Conservation
- Recommended Study Boundary of the McDowell Sonoran Preserve
- City Boundary



October 2005
OPEN SPACE & RECREATION ELEMENT

Locations depicted on this map are generalized

**general plan
 scottsdale, arizona**