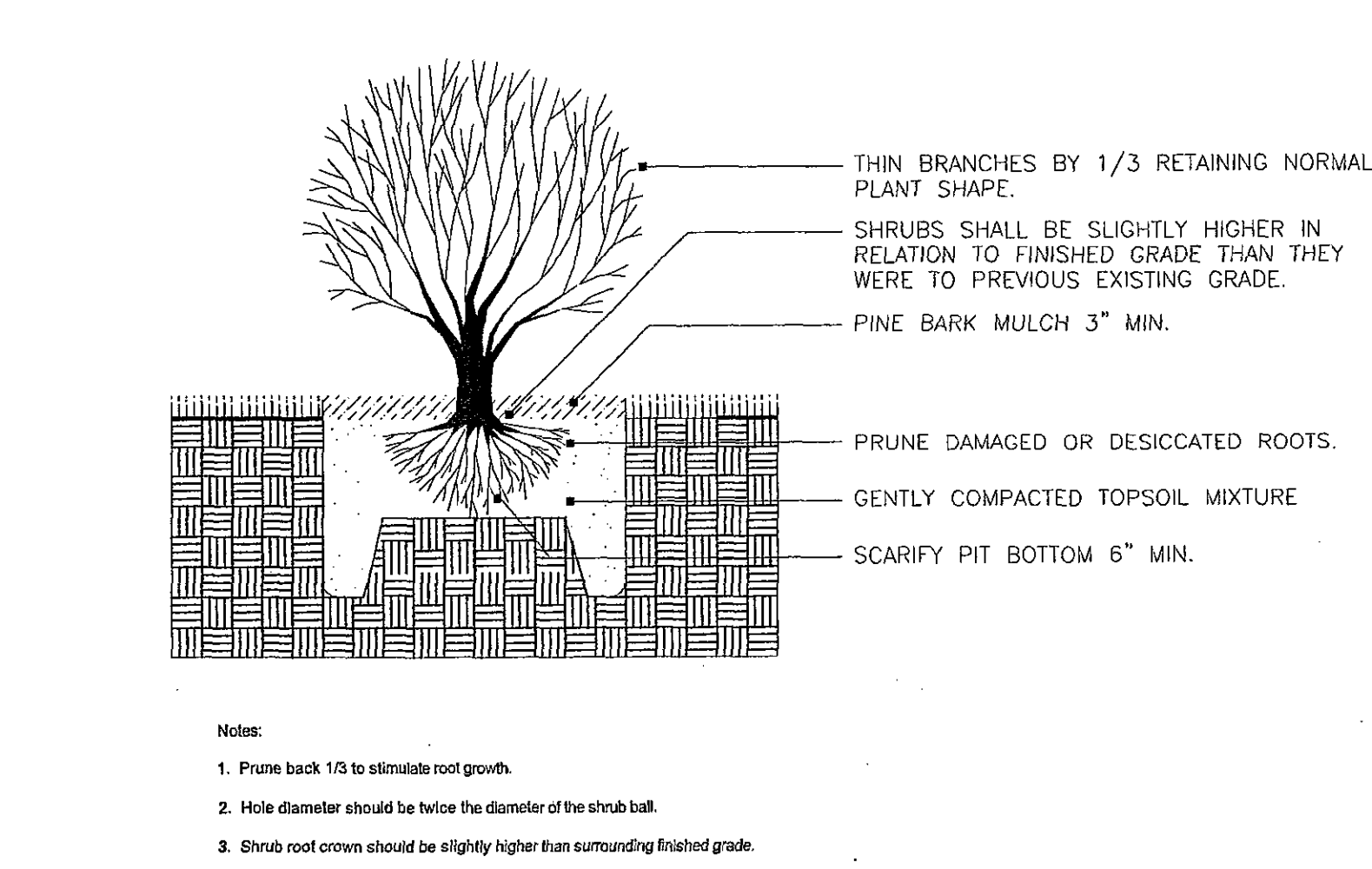
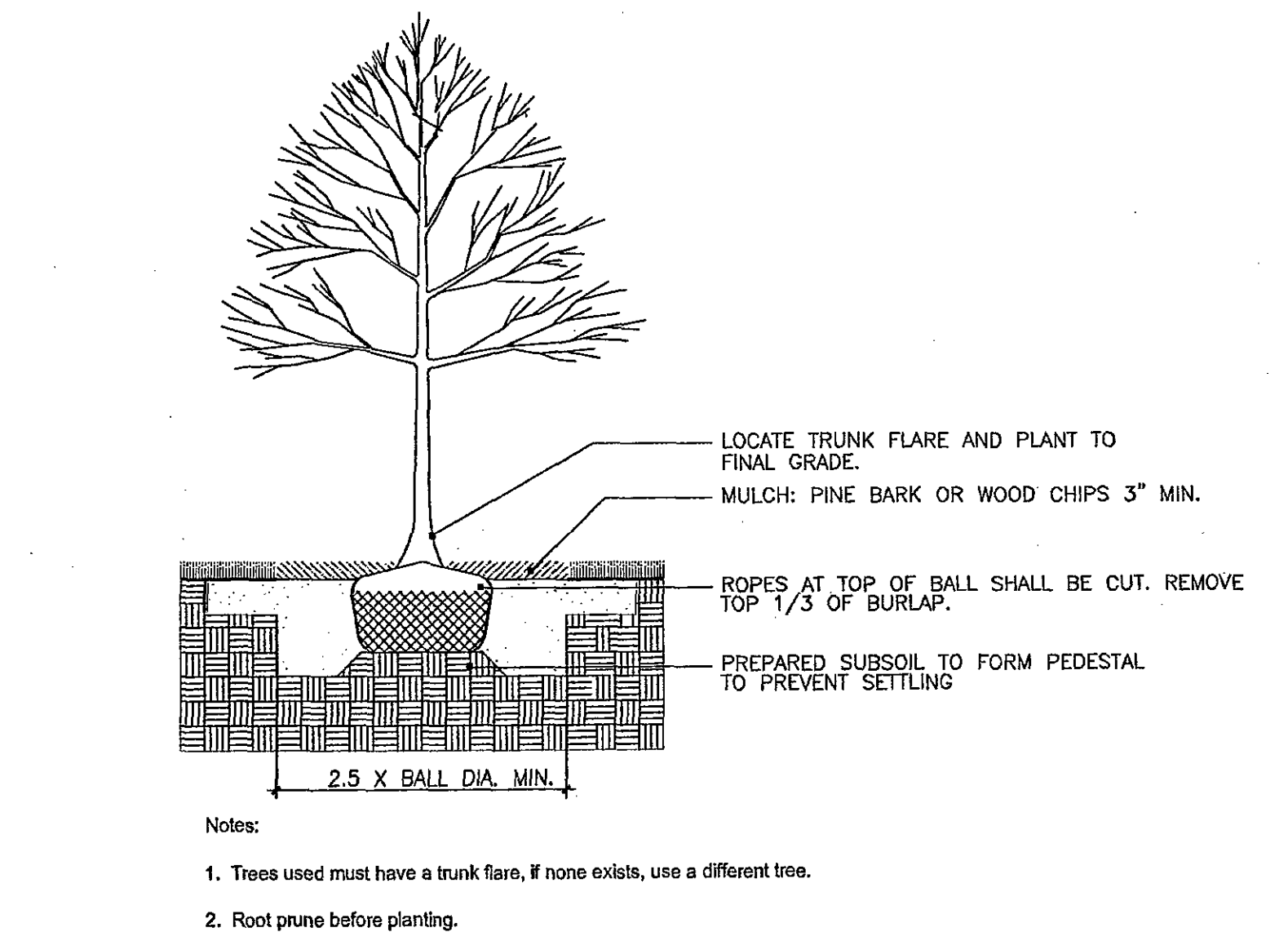


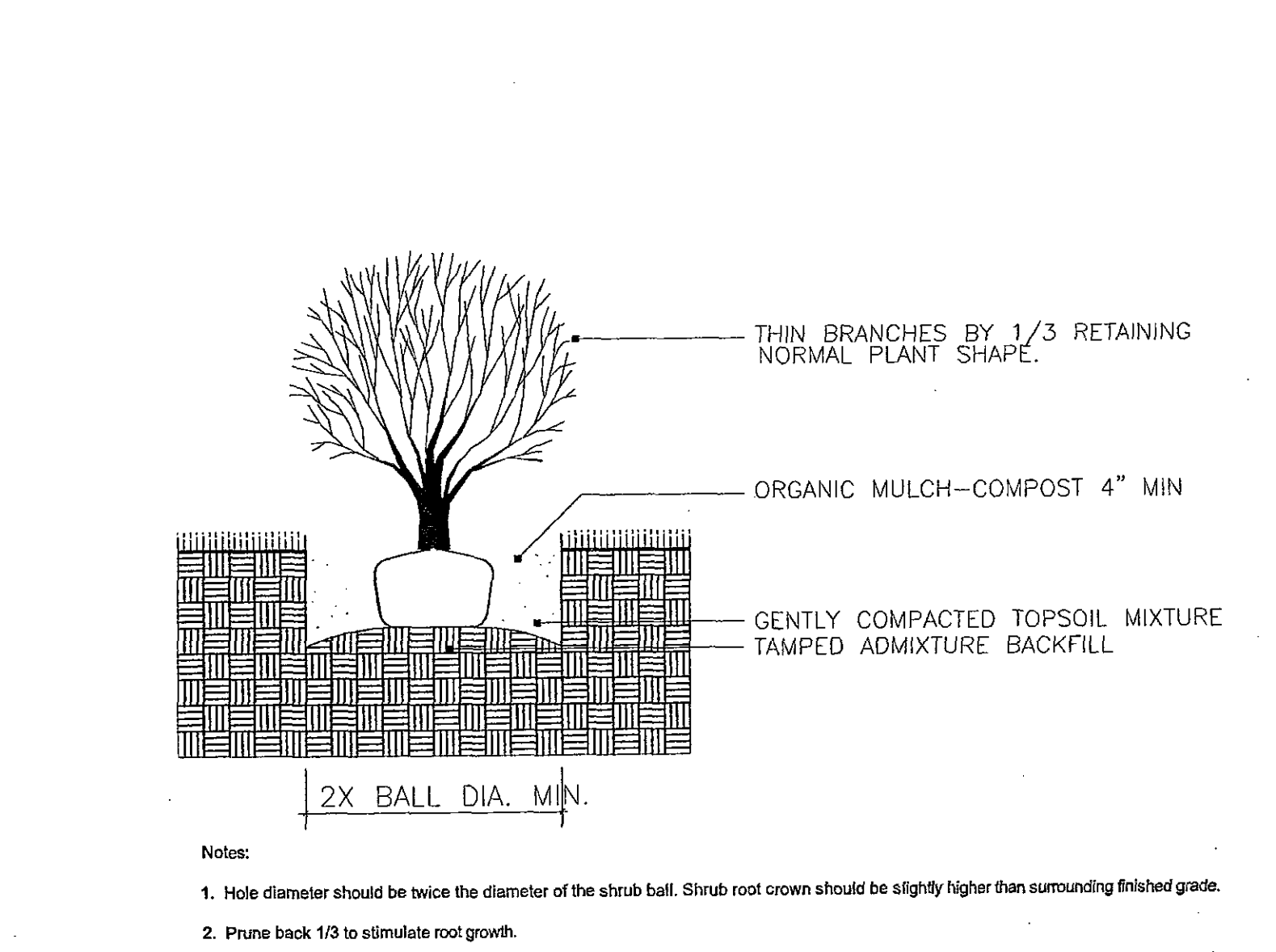
PLANTING DETAILS



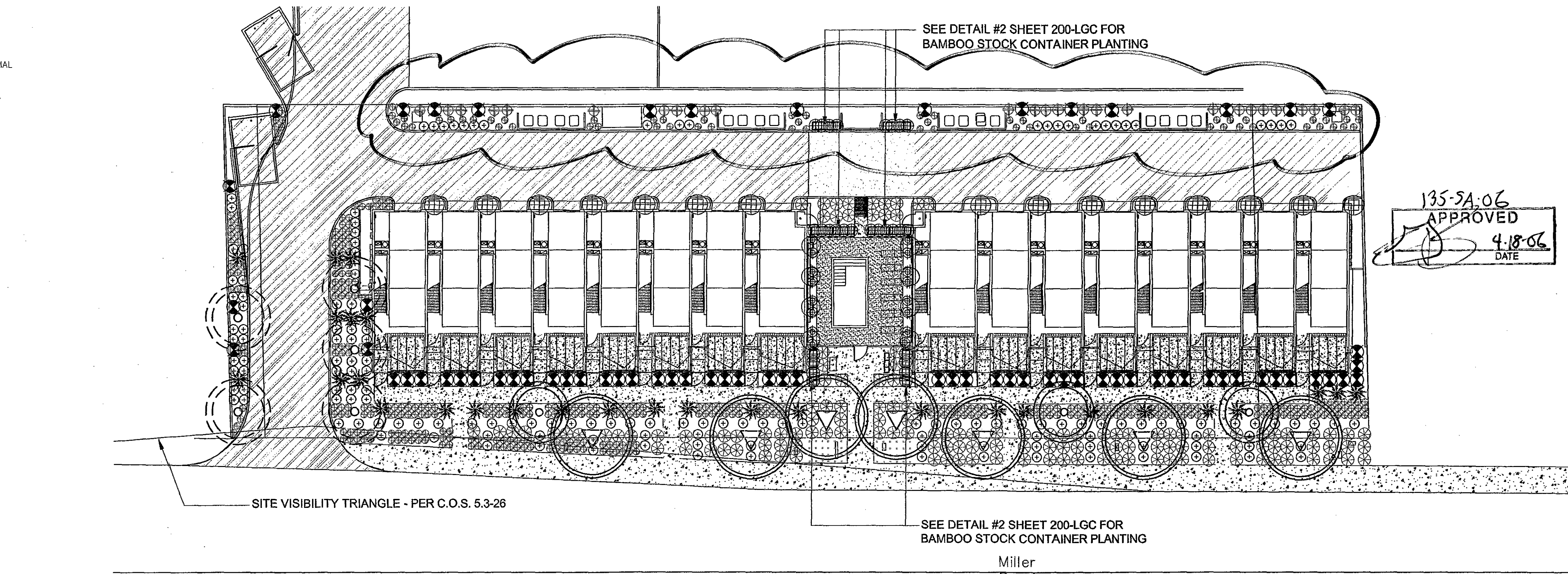
1 Shrub Planting and Ground Cover SCALE: NTS



2 Tree Planting SCALE: NTS

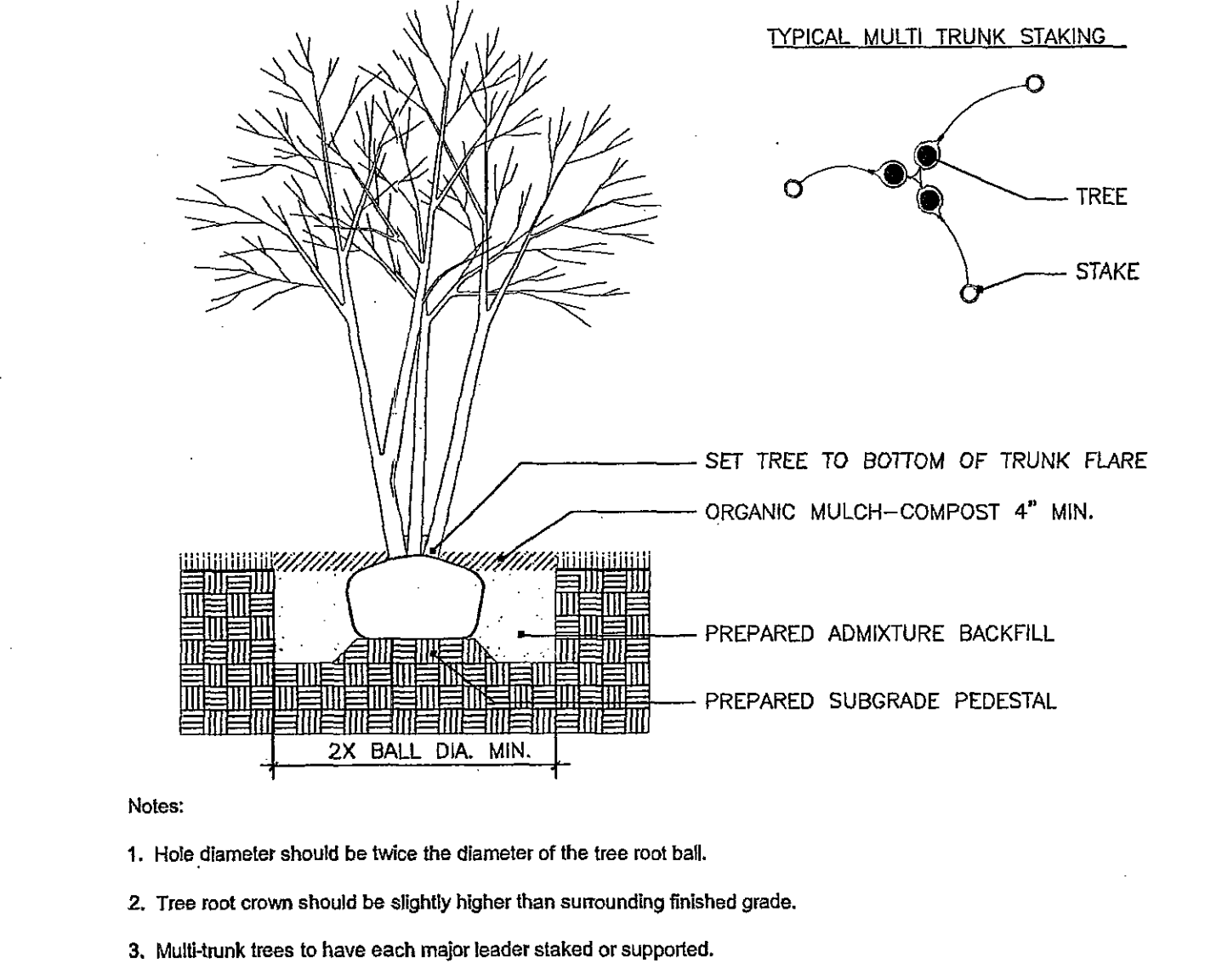


3 Shrub Planting - Container SCALE: NTS



LANDSCAPE NOTES

1. All planting areas to be covered with specified decomposed granite at a 2" minimum.
2. Bluestake prior to construction start. Call 1-800-Blue Stake it two working days before you dig. Call for the blue stakes.
3. Contractor shall become familiar with all site conditions prior to start of construction and shall confirm to all regulatory requirements and provisions set forth by the construction manager and general contractor.
4. All plant material subject to approval by landscape architect prior to installation and per approved plans.
5. Layout to be approved by landscape architect prior to installation and per approved plans.
6. The landscape architect retains the right to reject any and all plant material due to plant condition, planting methods, performance of plant material during installation period or any other factor affecting the quality of the landscape until substantial completion of the project is indicated.
7. All trees & specimen material shall be tagged in field by landscape architect with contractor prior to selection and delivery to site.



4 Multi-Stem Tree Planting SCALE: NTS

8. All container material shall conform to the largest (maximum) size for the material category.
9. Samples of all inert materials (soil, crushed granite, mulch, boulders, etc.) must be submitted for approval by the landscape architect prior to delivery and installation.
10. Contractor shall assure proper coordination with all other construction factors on the project and shall make themselves aware of all other construction conditions and expectations. Contractor shall return the site to all finish grades indicated.
11. Quantities shown on materials list are for clarification purposes. However, in the case of a discrepancy between the graphic and the numerical quantities, in all cases the contractor shall provide the larger quantity indicated.
12. Contractor shall provide a warranty on all plant material.
Trees 15 gal. and larger 12 months
Shrubs 12 months
Groundcover 6 months
13. Provide agronomic soils tests for nutrients and toxins.
14. Contractor to stake all plant locations for approval prior to installation.
15. No plant substitutions, type, size, or quantity deviations from the approved landscape or irrigation plans without prior approval from Urban Earth Design.
16. All plant material and specifications to conform to the Arizona Nurseryman Association standards.
17. All right-of-way plant material to be in compliance with the Department of Water Resources low water use plant list.
18. All existing trees and shrubs on the site and designated to remain that are damaged or destroyed will be replaced in kind by the contractor.
19. Existing irrigation shall be modified and connected to the new system. Maintain existing irrigation requirements. Contractor to cap off or abandon existing irrigation to plant material and provide new irrigation from project to existing right-of-way landscaping.
20. Contractor shall leave site in clean and safe condition throughout work and at project conclusion.

Water Intensive Landscape Tabulation:
This site is thirty seven thousand nine hundred and nineteen (37919) square feet. City code therefore allows for nine hundred (900) square feet of water-intensive landscape for the first nine thousand (9,000) square feet. The remaining twenty eight thousand nine hundred nineteen (28919) square feet allows for an additional one thousand four hundred forty-four (1445.95) square feet. This brings the total allowable water intensive landscape to two thousand three hundred forty five (2345) square feet. This landscape has been designed with four hundred sixty-eight (468) square feet of plant material not on the ADWR Low Water Use Plant List.

PLANT LEGEND

Botanical Name Common Name	Size(s)	Calliper	Quantity
Schinus terebinthifolius Brazilian Pepper Tree	36" Box	4"	3
Prosopis chinensis Velvet Mesquite	24" Box		5
	36" Box	4"	7
Botanical Name Common Name	Size(s)	Quantity	
Euphorbia rigida Gopher plant	1 gal	25	
Manfreda maculosa Texas tuberose	1 gal	407	
*Sanseveria trifasciata Snake Plant	5 gal	16	
Bougainvillea "Torch Glow" Torch Glow	5 gal	69	
Simmondsia chinensis Jojoba vista	5 gal	153	
Manfreda "Macho Mocha" Mangave	5 gal	29	
Callaeum macroptera Yellow Orchid Vine	5 gal	8	
*Bambusa oldhamii Giant Timber Bamboo	5 gal	29	
Muhlenbergia rigens Deer Grass	5 gal	139	
Bougainvillea "Barbara Karst" Bougainvillea	5 gal	6	
All top dressing materials in planting areas to be covered at 2" minimum. *Plants not currently on the ADWR Low Water Plant List			

Revision 1: 12.13.05

Revision 2: 3.15.06

Circle West Architects, P.C.
expressly disclaims any responsibility
from any unauthorized use of these
plans, drawings and notes. Any
authorization must be in writing. This
drawing may have been reproduced
at a size different than originally
drawn. The owner and architect
assume no responsibility for use of
incorrect scale. Drawings are not to
be scaled. Not Published - all rights
reserved.

Circle West
Circle West Architects, P.C.
8700 E. Via De Ventura
Suite 100
Scottsdale, Arizona 85258
Phone: 480.609.1000
Fax: 480.609.1037

URBAN
EARTH
DESIGN
Landscape Architecture
Urban Design & Planning
Community Development
4837 E. Indian School Rd.
Phoenix, Arizona 85018
602.285.0214
602.285.9855 fax

Not
For
Construction
or
Recording
DRB#: 69-DR-2005
Project Miller
1501 North Miller Road
Scottsdale, Arizona 85257

☐ Schematic Design
☐ Design Development
☒ City Submittal
☐ Construction Issue
☐ Record Drawings

Project No. 0064
Cad File
Plan Check No.
Design Review No. 69-DR-2005
Checked By MBD
Drawn By SDJ
Date 12.13.05
Title PLANTING PLAN
NORTH 10 SCALE 1"=20'
20
Sheet No. 2 OF 5 200-LPL

2ND LANDSCAPE CD SUBMITTAL