

Chafin, Kim

From Chafin, Kim
Sent Wednesday, December 20, 2006 9 38 AM
To Kercher, Phil
Subject RE: Mondrian Hotel - Street lighting change & stop sign relocation/removal

Hi Phil,

I'm actually meeting with them this morning at 10 00 to check out a planter next to the brick fountain in the mall, and then we're going over to Buckboard & 1st, so if you want to join us, that would be great, but I imagine you'll probably be at DRC

In any case, I'll take a copy of Figure 5 3-27 out to the field this morning and talk it over w/ the architect

Appreciate the quick response

Thanks!

Kim Chafin, AICP

Senior Planner

480-312-7734

From: Kercher, Phil
Sent: Wednesday, December 20, 2006 9 32 AM
To: Chafin, Kim
Subject: RE: Mondrian Hotel - Street lighting change & stop sign relocation/removal

Kim They need to provide the traffic safety triangles for sight distance at the intersection per Figure 5 3-27 of the DSPM. The entry features will need to be located outside of this triangle, therefore, the stop sign should be able to remain in its current location. We can meet them on site to discuss options if necessary. Phil

From: Chafin, Kim
Sent: Tuesday, December 19, 2006 7 18 AM
To: Kercher, Phil
Subject: RE: Mondrian Hotel - Street lighting change & stop sign relocation/removal

Hi Phil,

Thanks for the info

The Mondrian will be placing 26-tall entry features on both sides of that drive aisle, and they believed the stop sign in its current location would detract from the aesthetics. Do you think it would be acceptable if it were relocated to the most easterly portion of that landscape area?

Thanks again!

Kim Chafin, AICP

Senior Planner

480-312-7734

From: Kercher, Phil
Sent: Friday, December 15, 2006 10 32 AM

12/20/2006

To: Chafin, Kim

Subject: RE Mondrian Hotel - Street lighting change & stop sign relocation/removal

Kim Absolutely no way can they remove the stop sign This is a four-way stop controlled intersection Removing the stop sign from one leg would be very confusing to drivers Legally, they would still be required to stop, but they wouldn't have the stop sign to reinforce that It is on private property, but it is a public right-of-way intersection It appears to be in the correct location We could consider relocating, but it wouldn't be much of a change What are they trying to accomplish? Phil

From: Chafin, Kim

Sent: Wednesday, December 13, 2006 4 26 PM

To: Davis, Don, Kercher, Phil

Subject: FW: Mondrian Hotel - Street lighting change & stop sign relocation/removal

Don & Phil,

Mondrian Hotel wants to relocate or remove an existing street light and an existing stop sign Attached are photos of existing condition and photo simulations of proposed conditions

Don, I left you a voice mail earlier today regarding this issue I'd be happy to meet you at the site if you like

Phil, Jeremy believed the stop sign is on private property Mondrian would ideally like to remove it, is that ok with you? Please let me know if you are not the person that I should be talking to

Thanks!

Kim Chafin, AICP

Senior Planner

480-312-7734

From: Brazelton, Bill [mailto:bbrazelton@DLRGROUP.com]

Sent: Wednesday, December 13, 2006 2 43 PM

To: Chafin, Kim, Dye, Jeremy P

Cc: Michael Linczyc (E-mail), Rice, George, Yasin Abdullah (E-mail), Betsy Loeb (E-mail)

Subject: Mondrian Hotel - Street lighting change

Kim and Jeremy,

Thank you for meeting Betsy Loeb and me at the Mondrian Hotel's main entrance on Buckboard and 1st Avenue We discussed a light pole change located next to the south sidewalk, also a stop sign located to the north

The pictures I've attached show before/after views The photos of the stop sign are viewed from both public and property sides

The most favorable ideas concluded with shifting the light pole 18' to the west and trimming the mesquite tree branches near its new location The stop sign that is located on private property would be moved east to a masonry wall or perhaps just removed

Thanks for your willingness to resolve the hotel's request, promptly

Bill Brazelton, AIA

DLR Group

6225 North 24th Street, Suite 250

12/20/2006

Phoenix, AZ 85016

Tel (602) 381-8580 Fax (602) 956-8358

e-mail bbrazelton@dlrgroup.com

<<2c- Light shown removed jpg>> <<1- Light's current location with yellow marker at 18' west jpg>> <<1a- Light moved 18' west jpg>> <<1c- Light moved 18' west jpg>> <<2- Light's current location - viewed from Vehicle at the 1st Ave stop sign jpg>> <<2a- Light shown removed jpg>> <<2b- Light's current location - Pedestrian view from across the intersection jpg>> <<stop sign 2 jpg>> <<stop sign 1 jpg>>



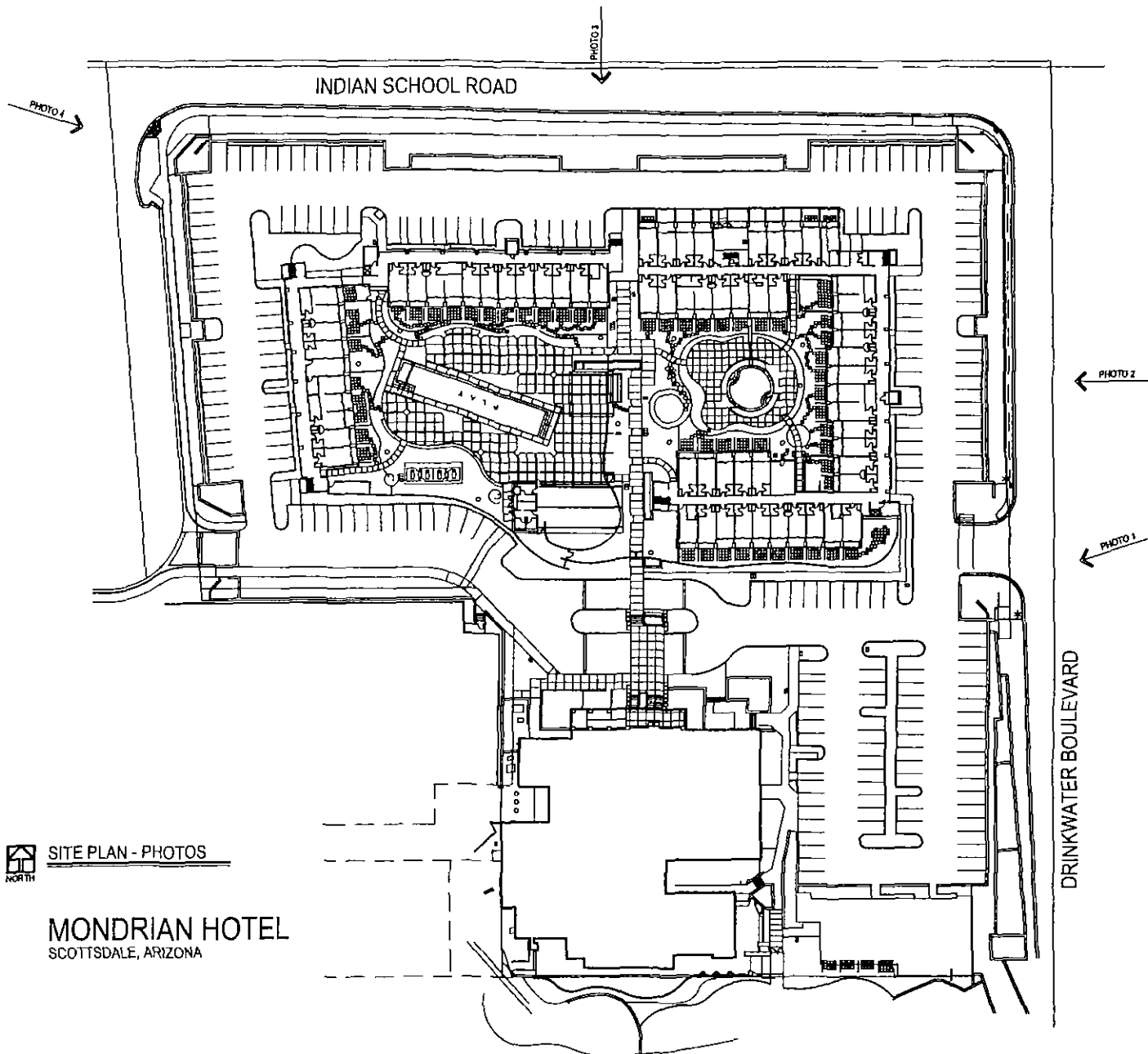
DATE OCTOBER 5, 2006
TO DEVELOPMENT REVIEW BOARD
FROM KIM CHAFIN, AICP
RE MONDRIAN HOTEL PROPOSED PAINT COLOR CHANGE
 82-DR-2006

The Mondrian Hotel has taken over the premises formerly occupied by the James Hotel, 7353 East Indian School Road. The applicant proposes an interim color change to Navajo White for all buildings, with the exception of the exterior corridor colors, which would be retained.

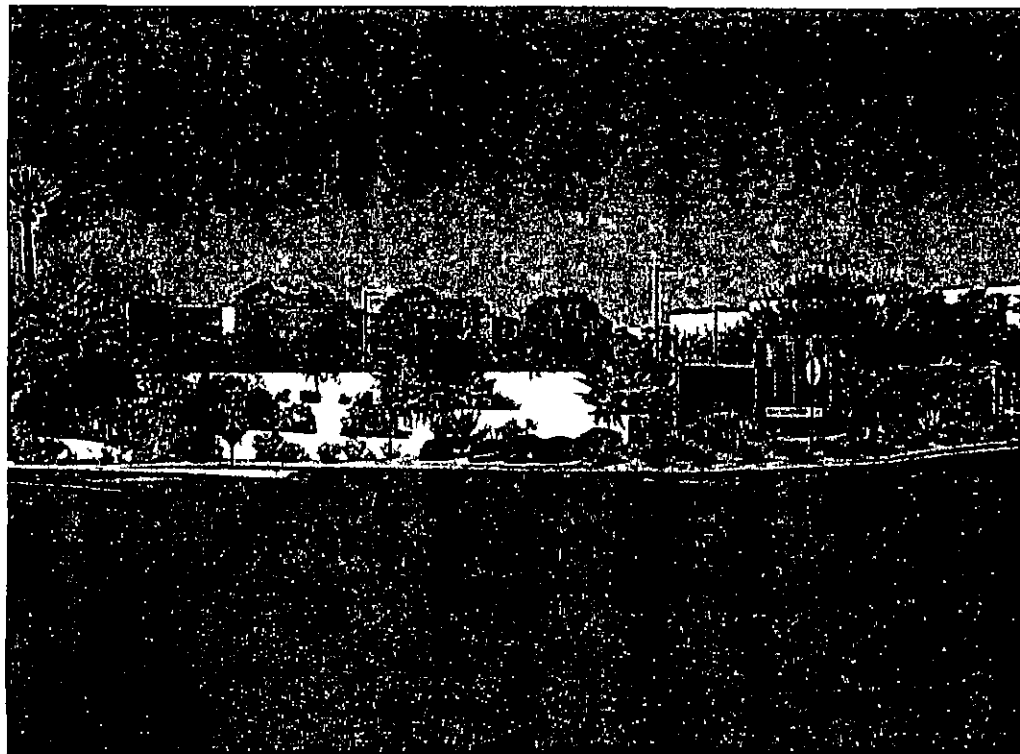
At a future date, the applicant wishes to permanently modify all building colors, including exterior corridors, to Benjamin Moore White.

Inasmuch as color was an important issue when the James Hotel was approved in 2003, and color continues to be an important issue for all Development Review projects, the Board's input is requested regarding this study session item.

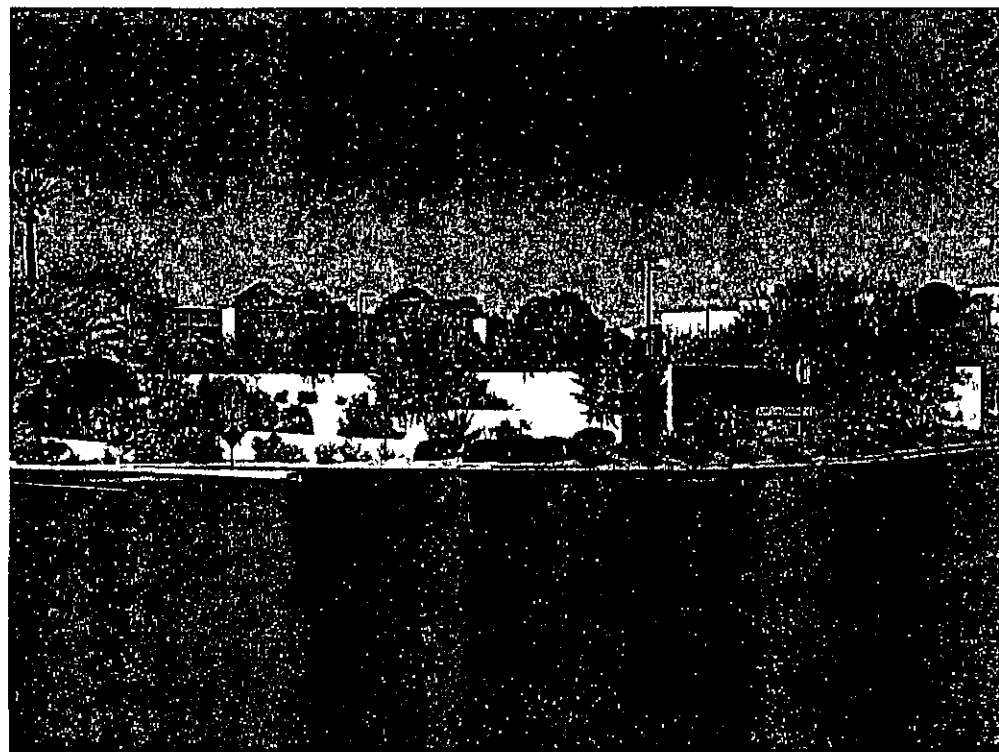
Attachments Photo site plan
 Photos of existing and proposed elevations
 Elevations
 Color samples



82-DR-2006
REV 09/21/2008



**EXISTING - EAST ELEVATION
DRINKWATER BLVD. ENTRANCE**



**PROPOSED - EAST ELEVATION
DRINKWATER BLVD. ENTRANCE**



**EXISTING - EAST ELEVATION
DRINKWATER BLVD.**



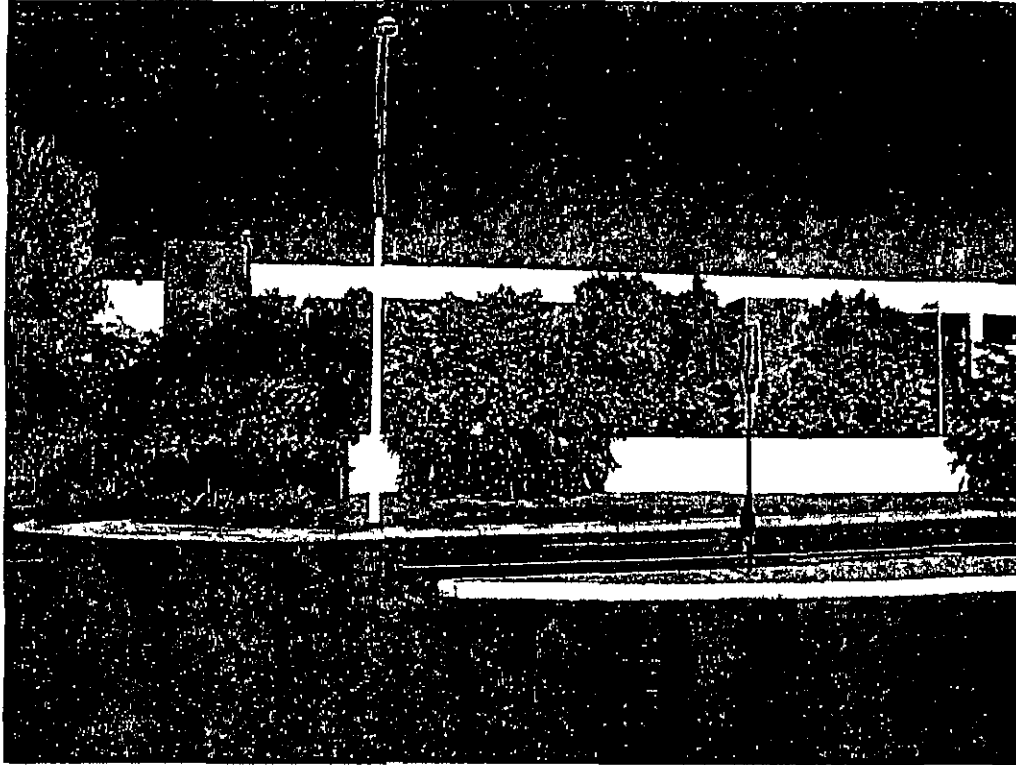
**PROPOSED - EAST ELEVATION
DRINKWATER BLVD.**



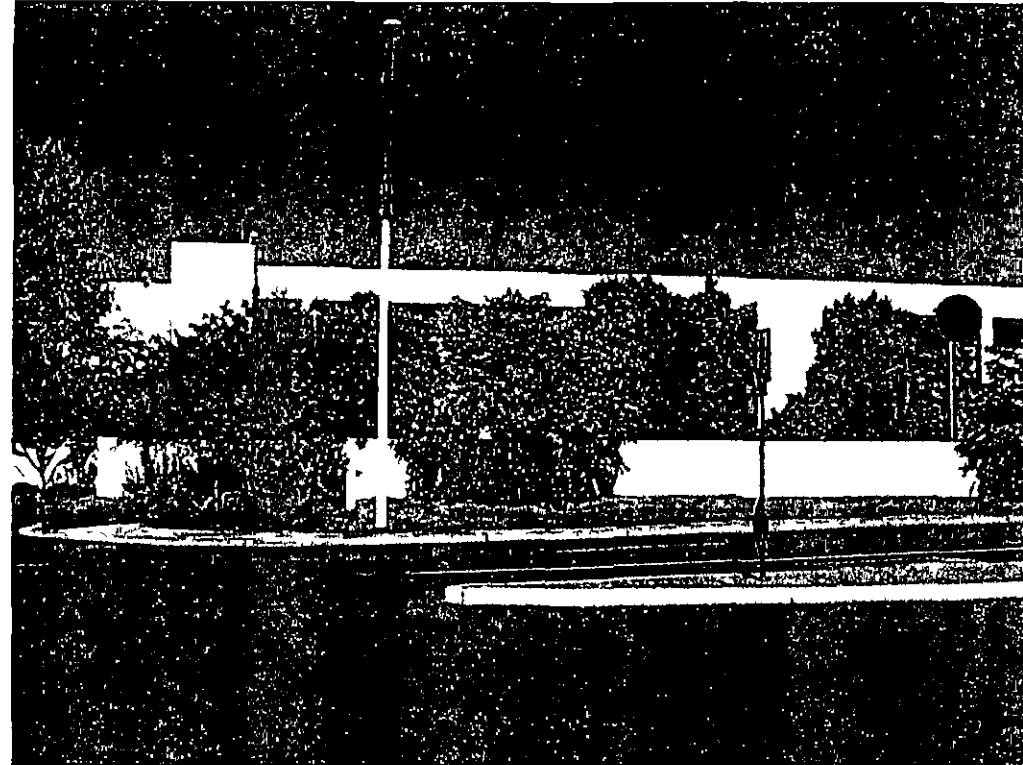
**EXISTING - NORTH ELEVATION
INDIAN SCHOOL ROAD**



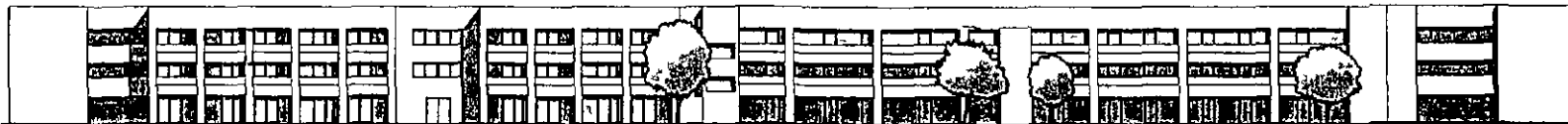
**PROPOSED - NORTH ELEVATION
INDIAN SCHOOL ROAD**



**EXISTING - WEST ELEVATION
INDIAN SCHOOL AND BUCKBOARD**



**PROPOSED - WEST ELEVATION
INDIAN SCHOOL AND BUCKBOARD**



North Exterior Elevation



East Exterior Elevation



South Exterior Elevation



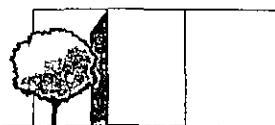
West Exterior Elevation



North Courtyard Elevation



East Courtyard Elevation



East Courtyard Elevation



South Courtyard Elevation



West Courtyard Elevation

82-DR-2006
REV 09/27/2006

Guest Room Building
Street & Courtyard Elevations

Proposed Interim

 DLR Group



North Exterior Elevation



East Exterior Elevation



South Exterior Elevation



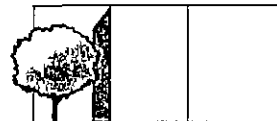
West Exterior Elevation



North Courtyard Elevation



East Courtyard Elevation



East Courtyard Elevation



South Courtyard Elevation

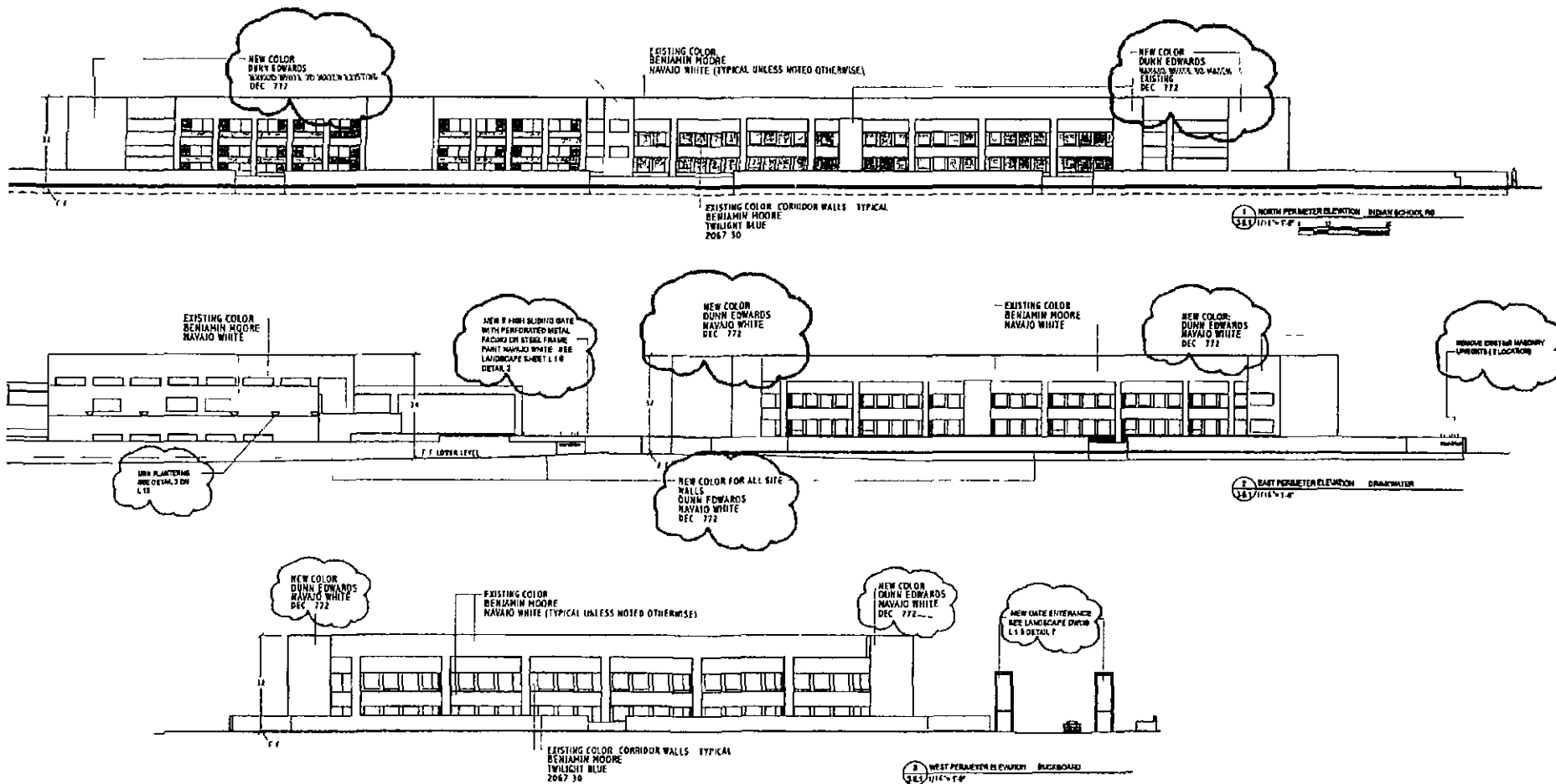


West Courtyard Elevation

82-DR-2006
REV 09/27/2006

Guest Room Building
Street & Courtyard Elevations

Permanent



82-DR-2006
REV 09/21/2008

EXTERIOR ELEVATIONS
MONDRIAN HOTEL - 7353 E INDIAN SCHOOL ROAD - RENOVATION
SCOTTSDALE ARIZONA

2

DLR Group
Architectural Engineering Planning Interiors

STUDY SESSION ITEM

**82-DR-2006 – MONDRIAN HOTEL PROPOSED
PAINT COLOR CHANGE**

**COLOR SAMPLE ATTACHMENTS NOT SUITABLE
FOR COPYING**

Chafin, Kim

From Cummins, Mac
Sent Thursday, December 21, 2006 9 18 AM
To Chafin, Kim
Cc Bloemberg, Greg
Subject RE Old Town merchants association

You'd probably be better off walking over there and talking to her. She's at Atkinson's Trading Post, Brown - between Main & 1st Ave, east side. Jon Chase probably has a phone number for her.

I agree with your assessment. Accommodate the Mondrian, but anything that might upset the old town merchants, let's discuss.

Thanks

Mac

From: Chafin, Kim
Sent: Thursday, December 21, 2006 7 48 AM
To: Cummins, Mac
Cc: Bloemberg, Greg
Subject: Old Town merchants association

Hey Boss,

I believe I mentioned to you that I'm working with the Mondrian regarding their request to remove or relocate an existing Old Town character street light near the SEC of Buckboard & 1st, as they are concerned it will interfere with the "money shot" view of their 26-foot high entry feature.

We considered the possibility of moving it to the west, but it would interfere with existing mature trees, and we don't want to remove any of those.

Now they're wondering if we would consider light bollards. I conferred w/ Bob Wood, who noted that the City paid half for the lights, while the Old Town merchants association paid the other half as part of an improvement district. Bob indicated he would not be at all surprised if the placement of the pole had been very deliberate and specific, and therefore strongly recommended that I check in with those folks (Marilyn Atkinson, Roger Saba, Mike (owner of Caramba's)). He also said I should be prepared for them to be displeased that the City already staff approved the entry features, since they will be highly visible from Old Town.

I'm operating under the assumption that the City wants to accommodate the Mondrian, as long as we don't ruffle Old Town's feathers.

Mondrian also asked if they could remove or relocate the stop sign at the NEC, but Phil shot that down.

Anyway, Bob suggested I start with Marilyn. Do you have any contact numbers for Marilyn Atkinson, et al?

Thanks!

Kim Chafin, AICP
 Senior Planner
 480-312-7734

12/21/2006

Chafin, Kim

From Davis, Don
Sent Tuesday, December 19, 2006 7 37 AM
To Chafin, Kim
Cc Bandelin, Rae
Subject RE planting at the Mondrian

Ok, Rae please attend as well Thanks

From: Chafin, Kim
Sent: Tuesday, December 19, 2006 7 35 AM
To: Davis, Don
Subject: RE planting at the Mondrian

Good morning Don,
I've arranged for Betsy Loeb, the landscape architect, and myself to meet you out by the brick fountain on Wednesday at 10 00
Thanks!

Kim Chafin, AICP
Senior Planner
480-312-7734

From: Davis, Don
Sent: Friday, December 15, 2006 12 17 PM
To Chafin, Kim
Subject: RE planting at the Mondrian

Kim, if you want to set up a meeting at that area next week w/ the hotel staff I can attend Tuesday or Wednesday morning, 10 00am ?

From: Chafin, Kim
Sent: Thursday, December 14, 2006 11 07 AM
To Davis, Don
Subject: FW planting at the Mondrian

Hi Don,
Mondrian Hotel wants to put some plants in what they believe are City planters (see message below) I believe this is also in your area, but let me know if I should check with someone else
Would we let them plant in our planters, and if so, what plants, and who would be responsible for maintenance?
Thanks!

Kim Chafin, AICP
Senior Planner

12/19/2006

480-312-7734

From: Betsy Loeb [mailto:Loeb@teneyckla.com]
Sent: Wednesday, December 13, 2006 8:24 AM
To: Chafin, Kim
Subject: planting at the Mondrian

Hi, Kim-

I have a question about planting at the Mondrian where it borders the City of Scottsdale plaza and a brick fountain and I'm hoping you can help me or point me to the person I need to talk to. I'm attaching a photo of the area, just so you know exactly what I am writing about. This photo shows the hotel patios on the right and the brick fountain and railroad tie planters on the left. The existing planters are nearly empty and we'd like to add plants to those, but I believe they are part of the City's property. Is there someone I can talk to about approval to plant there? I'd appreciate any information you can give me about this.

Thanks!

Betsy Loeb

Ten Eyck landscape architects, inc
808 E Osborn Road No. 100
Phoenix, Arizona 85014
Tel 602 468 0505
Fax 602 468 5775

12/19/2006

Chafin, Kim

From Betsy Loeb [Loeb@teneyckia.com]
Sent Tuesday, December 19, 2006 7:30 AM
To Chafin, Kim
Subject RE: Can you meet @ 10 AM on Wednesday regarding the planting area near the brick fountain?

Yes, that would be great. I'll see you tomorrow at 10.

Thanks, Kim

Betsy

From: Chafin, Kim [mailto:KChafin@Scottsdaleaz.gov]
Sent: Tuesday, December 19, 2006 7:24 AM
To: Betsy Loeb
Subject: Can you meet @ 10 AM on Wednesday regarding the planting area near the brick fountain?

Good morning Betsy,
Regarding your request to install plants in the planter near the brick fountain, I've made contact with the appropriate City staff person, and we would like to meet with you Wednesday at 10:00 at that location. Are you available?

Please advise.

Thanks!



Kim Chafin, AICP
Senior Planner
City of Scottsdale
Ph 480-312-7734
Fax 480-312-7088
Email KChafin@ScottsdaleAZ.gov

12/19/2006

Chafin, Kim

From Davis, Don
Sent Thursday, December 14, 2006 9 24 AM
To Chafin, Kim
Subject RE FW Voice mail 71 sec (MID=1637633)
Categories MRS Voice Message

Kim, it would require extensive pruning of that mature mesquite tree to fit the light pole in, I suggest they move the pole farther west and avoid the tree altogether. If we did prune it back to allow the light pole we would be continually pruning the tree as it would obstruct the pole/lighting.

From: Chafin, Kim
Sent: Thursday, December 14, 2006 8 27 AM
To: Davis, Don
Subject: RE FW Voice mail 71 sec (MID=1637633)

Don,
They're just asking to have it pruned back so that the light pole could be moved 18' to the west of its existing location. I told them I would need to check with you, because I wasn't sure if the tree would have to be pruned back so much that it would actually kill the tree, or if moving the pole to that location would create an undue burden maintenance-wise.
So please let me know what you think.
Thanks!

Kim Chafin, AICP
Senior Planner
480-312-7734

From: Davis, Don
Sent Thursday, December 14, 2006 8 23 AM
To: Chafin, Kim
Subject FW Voice mail 71 sec (MID=1637633)

Kim you asking for the tree to be removed totally or just pruned back?

Chafin, Kim

From Chafin, Kim
Sent Thursday, December 14, 2006 9 53 AM
To 'Brazelton, Bill', Dye, Jeremy P , 'Betsy Loeb'
Subject RE Mondrian Hotel - Street lighting change

Bill, Betsy & Jeremy,
I conferred with Don Davis, and he checked out the site and suggests that the pole be moved further west to avoid the tree altogether. The area 18 feet west of the existing location would require continual pruning of the tree as it would obstruct the pole/lighting.
Jeremy, is there sufficient room to move it further west?
Please advise
Thanks!



Kim Chafin, AICP
Senior Planner
City of Scottsdale
Ph 480-312-7734
Fax 480-312-7088
Email KChafin@ScottsdaleAZ.gov

From Brazelton, Bill [mailto:bbrazelton@DLRGROUP.com]
Sent Wednesday, December 13, 2006 2 43 PM
To: Chafin, Kim, Dye, Jeremy P
Cc: Michael Linczyc (E-mail), Rice, George, Yasin Abdullah (E-mail), Betsy Loeb (E-mail)
Subject: Mondrian Hotel - Street lighting change

Kim and Jeremy,

Thank you for meeting Betsy Loeb and me at the Mondrian Hotel's main entrance on Buckboard and 1st Avenue. We discussed a light pole change located next to the south sidewalk, also a stop sign located to the north.

The pictures I've attached show before/after views. The photos of the stop sign are viewed from both public and property sides.

The most favorable ideas concluded with shifting the light pole 18' to the west and trimming the mesquite tree branches near its new location. The stop sign that is located on private property would be moved east to a masonry wall or perhaps just removed.

Thanks for your willingness to resolve the hotel's request, promptly.
Bill Brazelton, AIA

DLR Group
6225 North 24th Street, Suite 250
Phoenix, AZ 85016

Tel (602) 381-8580 Fax (602) 956-8358

12/19/2006

e-mail bbrazelton@dirgroup.com

<<2c- Light shown removed.jpg>> <<1- Light's current location with yellow marker at 18' west.jpg>> <<1a- Light moved 18' west.jpg>> <<1c- Light moved 18' west.jpg>> <<2- Light's current location - viewed from Vehicle at the 1st Ave stop sign.jpg>> <<2a- Light shown removed.jpg>> <<2b- Light's current location - Pedestrian view from across the intersection.jpg>> <<stop sign 2.jpg>> <<stop sign 1.jpg>>

Chafin, Kim

From Chafin, Kim
Sent Tuesday, December 19, 2006 7 51 AM
To Bandelin, Rae
Subject FW planting at the Mondrian

From: Chafin, Kim
Sent Tuesday, December 19, 2006 7 51 AM
To: Davis, Don
Subject: RE planting at the Mondrian

Hi Rae,

Don & I are meeting with the landscape architect tomorrow morning at 10 00 at the brick fountain Please join us if you can, otherwise, I'll get in touch with you after the meeting to let you know what type of plants they want

I got the impression they may want to put them in themselves and maintain it, as they are a bit disappointed the planter has sat empty for a while I imagine the City prefers not to let others putt around in their landscaping due to liability issues, etc , but please let me know if that is something we would consider

Thanks!

Kim Chafin, AICP
Senior Planner
480-312-7734

From: Davis, Don
Sent Monday, December 18, 2006 6 21 AM
To: Chafin, Kim
Cc: Bandelin, Rae
Subject: FW planting at the Mondrian

Rae, can you please follow up w/ Kim on this issue I know it's our area to maintain and there may be some irrigation issues we can buy and add plants Do they have specific plants they'd like in there?

From: Chafin, Kim
Sent: Thursday, December 14, 2006 11 07 AM
To: Davis, Don
Subject: FW planting at the Mondrian

Hi Don,

Mondrian Hotel wants to put some plants in what they believe are City planters (see message below) I believe this is also in your area, but let me know if I should check with someone else

Would we let them plant in our planters, and if so, what plants, and who would be responsible

12/19/2006

for maintenance?

Thanks!

Kim Chafin, AICP

Senior Planner

480-312-7734

From: Betsy Loeb [mailto:Loeb@teneyckla.com]

Sent: Wednesday, December 13, 2006 8:24 AM

To: Chafin, Kim

Subject: planting at the Mondrian

Hi, Kim-

I have a question about planting at the Mondrian where it borders the City of Scottsdale plaza and a brick fountain and I'm hoping you can help me or point me to the person I need to talk to. I'm attaching a photo of the area, just so you know exactly what I am writing about. This photo shows the hotel patios on the right and the brick fountain and railroad tie planters on the left. The existing planters are nearly empty and we'd like to add plants to those, but I believe they are part of the City's property. Is there someone I can talk to about approval to plant there? I'd appreciate any information you can give me about this.

Thanks!

Betsy Loeb

Ten Eyck landscape architects, inc

808 E Osborn Road No. 100

Phoenix, Arizona 85014

Tel 602 468 0505

Fax 602 468 5775

12/19/2006

Chafin, Kim

From Dye, Jeremy P
Sent Monday, December 18, 2006 7:46 AM
To Chafin, Kim, 'Brazelton, Bill', 'Betsy Loeb'
Cc Davis, Don
Subject RE: Mondrian Hotel - Street lighting change

Good afternoon all,

I have no objection to moving the street light further to the west, although, if memory serves, there wasn't much room further to the west. Otherwise, it becomes Don's decision as to whether he wants to accept the maintenance of regular pruning to keep the tree branches away from the fixture.

Let me know if you have any further questions.

Jeremy

From: Chafin, Kim
Sent: Thursday, December 14, 2006 10:54 AM
To: Brazelton, Bill, Dye, Jeremy P, Betsy Loeb
Subject: RE: Mondrian Hotel - Street lighting change

Bill,
Glad to hear the street light location works for you. Now we'll await word from Jeremy as to whether or not that location works for Street Lighting.
I'm still working on the stop sign issue. I'll be in touch.
Thanks!



Kim Chafin, AICP
Senior Planner
City of Scottsdale
Ph 480-312-7734
Fax 480-312-7088
Email KChafin@ScottsdaleAZ.gov

From: Brazelton, Bill [<mailto:bbrazelton@DLRGROUP.com>]
Sent: Thursday, December 14, 2006 10:32 AM
To: Chafin, Kim, Dye, Jeremy P, Betsy Loeb
Cc: Michael Linczyc (E-mail), Yasin Abdullah (E-mail)
Subject: RE: Mondrian Hotel - Street lighting change

Kim & Jeremy,

Moving the light pole further west, is of course, a better solution increasing unobstructed view of the gate panels.
Thank you for suggesting the change.

12/19/2006

Does the City have any concerns or objections regarding the stop sign being moved or deleted?

Thanks, Bill

-----Original Message-----

From Chafin, Kim [mailto:KChafin@Scottsdaleaz.gov]

Sent Thursday, December 14, 2006 9:53 AM

To Brazelton, Bill, Dye, Jeremy P, Betsy Loeb

Subject RE: Mondrian Hotel - Street lighting change

Bill, Betsy & Jeremy,

I conferred with Don Davis, and he checked out the site and suggests that the pole be moved further west to avoid the tree altogether. The area 18 feet west of the existing location would require continual pruning of the tree as it would obstruct the pole/lighting. Jeremy, is there sufficient room to move it further west?

Please advise

Thanks!



Kim Chafin, AICP

Senior Planner

City of Scottsdale

Ph 480-312-7734

Fax 480-312-7088

Email KChafin@ScottsdaleAZ.gov

From: Brazelton, Bill [mailto:bbrazelton@DLRGROUP.com]

Sent. Wednesday, December 13, 2006 2:43 PM

To: Chafin, Kim, Dye, Jeremy P

Cc. Michael Linczyc (E-mail), Rice, George, Yasin Abdullah (E-mail), Betsy Loeb (E-mail)

Subject Mondrian Hotel - Street lighting change

Kim and Jeremy,

Thank you for meeting Betsy Loeb and me at the Mondrian Hotel's main entrance on Buckboard and 1st Avenue. We discussed a light pole change located next to the south sidewalk, also a stop sign located to the north.

The pictures I've attached show before/after views. The photos of the stop sign are viewed from both public and property sides.

The most favorable ideas concluded with shifting the light pole 18' to the west and trimming the mesquite tree branches near its new location. The stop sign that is located on private property would be moved east to a masonry wall or perhaps just removed.

Thanks for your willingness to resolve the hotel's request, promptly.

Bill Brazelton, AIA

DLR Group

6225 North 24th Street, Suite 250

Phoenix, AZ 85016

Tel (602) 381-8580 Fax (602) 956-8358

e-mail bbrazelton@dlrgroup.com

<<2c- Light shown removed jpg>> <<1- Light's current location with yellow marker at 18' west jpg>> <<1a- Light moved 18' west jpg>> <<1c- Light moved 18' west jpg>> <<2- Light's current location - viewed from Vehicle at the 1st Ave stop sign jpg>> <<2a- Light shown removed jpg>> <<2b- Light's current location - Pedestrian view from across the intersection jpg>> <<stop sign 2 jpg>> <<stop sign 1 jpg>>

Chafin, Kim

From Chafin, Kim
Sent Tuesday, December 19, 2006 7 18 AM
To Kercher, Phil
Subject RE Mondrian Hotel - Street lighting change & stop sign relocation/removal

Hi Phil,

Thanks for the info

The Mondrian will be placing 26-tall entry features on both sides of that drive aisle, and they believed the stop sign in its current location would detract from the aesthetics. Do you think it would be acceptable if it were relocated to the most easterly portion of that landscape area?

Thanks again!

Kim Chafin, AICP

Senior Planner

480-312-7734

From: Kercher, Phil
Sent: Friday, December 15, 2006 10 32 AM
To: Chafin, Kim
Subject RE Mondrian Hotel - Street lighting change & stop sign relocation/removal

Kim Absolutely no way can they remove the stop sign. This is a four-way stop controlled intersection. Removing the stop sign from one leg would be very confusing to drivers. Legally, they would still be required to stop, but they wouldn't have the stop sign to reinforce that. It is on private property, but it is a public right-of-way intersection. It appears to be in the correct location. We could consider relocating, but it wouldn't be much of a change. What are they trying to accomplish? Phil

From: Chafin, Kim
Sent: Wednesday, December 13, 2006 4 26 PM
To: Davis, Don, Kercher, Phil
Subject FW Mondrian Hotel - Street lighting change & stop sign relocation/removal

Don & Phil,

Mondrian Hotel wants to relocate or remove an existing street light and an existing stop sign.

Attached are photos of existing condition and photo simulations of proposed conditions.

Don, I left you a voice mail earlier today regarding this issue. I'd be happy to meet you at the site if you like.

Phil, Jeremy believed the stop sign is on private property. Mondrian would ideally like to remove it, is that ok with you? Please let me know if you are not the person that I should be talking to.

Thanks!

Kim Chafin, AICP

Senior Planner

480-312-7734

12/19/2006

From: Brazelton, Bill [mailto:bbrazelton@DLRGROUP.com]
Sent: Wednesday, December 13, 2006 2:43 PM
To: Chafin, Kim, Dye, Jeremy P
Cc: Michael Linczyc (E-mail), Rice, George, Yasin Abdullah (E-mail), Betsy Loeb (E-mail)
Subject: Mondrian Hotel - Street lighting change

Kim and Jeremy,

Thank you for meeting Betsy Loeb and me at the Mondrian Hotel's main entrance on Buckboard and 1st Avenue. We discussed a light pole change located next to the south sidewalk, also a stop sign located to the north.

The pictures I've attached show before/after views. The photos of the stop sign are viewed from both public and property sides.

The most favorable ideas concluded with shifting the light pole 18' to the west and trimming the mesquite tree branches near its new location. The stop sign that is located on private property would be moved east to a masonry wall or perhaps just removed.

Thanks for your willingness to resolve the hotel's request, promptly.
Bill Brazelton, AIA

DLR Group

6225 North 24th Street, Suite 250
Phoenix, AZ 85016

Tel (602) 381-8580 Fax (602) 956-8358

e-mail: bbrazelton@dlrgroup.com

<<2c- Light shown removed.jpg>> <<1- Light's current location with yellow marker at 18' west.jpg>> <<1a- Light moved 18' west.jpg>> <<1c- Light moved 18' west.jpg>> <<2- Light's current location - viewed from Vehicle at the 1st Ave stop sign.jpg>> <<2a- Light shown removed.jpg>> <<2b- Light's current location - Pedestrian view from across the intersection.jpg>> <<stop sign 2.jpg>> <<stop sign 1.jpg>>

Chafin, Kim

From Chafin, Kim
Sent Tuesday, December 19, 2006 7 24 AM
To 'Betsy Loeb'
Subject Can you meet @ 10 AM on Wednesday regarding the planting area near the brick fountain?

Good morning Betsy,
Regarding your request to install plants in the planter near the brick fountain, I've made contact with the appropriate City staff person, and we would like to meet with you Wednesday at 10 00 at that location. Are you available?

Please advise

Thanks!



Kim Chafin, AICP

Senior Planner

City of Scottsdale

Ph 480-312-7734

Fax 480-312-7088

Email KChafin@ScottsdaleAZ.gov

Chafin, Kim

From: Chafin, Kim
Sent: Thursday, December 14, 2006 9:53 AM
To: 'Brazelton, Bill'; Dye, Jeremy P.; 'Betsy Loeb'
Subject: RE: Mondrian Hotel - Street lighting change

Bill, Betsy & Jeremy,

I conferred with Don Davis, and he checked out the site and suggests that the pole be moved further west to avoid the tree altogether. The area 18 feet west of the existing location would require continual pruning of the tree as it would obstruct the pole/lighting.

Jeremy, is there sufficient room to move it further west?

Please advise.

Thanks!



Kim Chafin, AICP

Senior Planner

City of Scottsdale

Ph: 480-312-7734

Fax: 480-312-7088

Email: KChafin@ScottsdaleAZ.gov

From: Brazelton, Bill [mailto:bbrazelton@DLRGROUP.com]
Sent: Wednesday, December 13, 2006 2:43 PM
To: Chafin, Kim; Dye, Jeremy P.
Cc: Michael Linczyc (E-mail); Rice, George; Yasin Abdullah (E-mail); Betsy Loeb (E-mail)
Subject: Mondrian Hotel - Street lighting change

Kim and Jeremy,

Thank you for meeting Betsy Loeb and me at the Mondrian Hotel's main entrance on Buckboard and 1st Avenue. We discussed a light pole change located next to the south sidewalk; also a stop sign located to the north.

The pictures I've attached show before/after views. The photos of the stop sign are viewed from both public and property sides.

The most favorable ideas concluded with shifting the light pole 18' to the west and trimming the mesquite tree branches near its new location. The stop sign that is located on private property would be moved east to a masonry wall or perhaps just removed.

Thanks for your willingness to resolve the hotel's request, promptly.

Bill Brazelton, AIA

DLR Group

6225 North 24th Street, Suite 250

Phoenix, AZ 85016

Tel (602) 381-8580 Fax (602) 956-8358

12/14/2006

e-mail bbrazelton@dlrgroup.com

<<2c- Light shown removed jpg>> <<1- Light's current location with yellow marker at 18' west jpg>> <<1a- Light moved 18' west jpg>> <<1c- Light moved 18' west jpg>> <<2- Light's current location - viewed from Vehicle at the 1st Ave stop sign jpg>> <<2a- Light shown removed jpg>> <<2b- Light's current location - Pedestrian view from across the intersection jpg>> <<stop sign 2 jpg>> <<stop sign 1 jpg>>

Letter of Transmittal

If enclosures are not as noted, please contact us at once.



DLR Group

Architecture Engineering Planning Interiors

6225 North 24 Street
Suite 250
Phoenix, AZ 85016-2020
tel 602/381-8580
fax 602/956-8358
phoenix@dlrgroup.com
www.dlrgroup.com

Date 9/21/06

Deliver To **Kim Chafin** Senior Planner

Company City of Scottsdale

Address 7447 E. Indian School Rd.

City, State Zip Scottsdale, AZ 85251

From George Rice

Project Mondrian Hotel

Project No. 30-06121-00

We are sending

☒ ATTACHED
☐ Shop Drawings
☐ Copy of letter
☐ Specifications

☐ UNDER SEPARATE COVER
☐ Prints
☐ Change Order
☐ Other

☐ Plans
☐ Samples

Copies 1 set

Date

Description Proposed light fixtures-Exterior

Copies

Date

Description

Copies

Date

Description

Transmitted as

☒ For approval
☐ For your use
☐ As requested
☒ For review/comment
☐ For bids due

☐ Approved
☐ Approved as noted
☐ Correct
☐ Prints returned after loan to us

☐ Resubmit
☐ Submit
☐ Return
☐ Other

☐ Copies for approval
☐ Copies for distributors
☐ Corrected prints

Remarks Kim, if you have any questions please call. Thanks

Signature
Name

cc

Letter of Transmittal

If enclosures are not as noted, please contact us at once.



DLR Group

Architecture Engineering Planning Interiors

6225 North 24 Street
Suite 250
Phoenix, AZ 85016-2020
tel 602/381-8580
fax 602/956-8358
phoenix@dlrgroup.com
www.dlrgroup.com

Date 9/27/06

Deliver To Kim Chafin Senior Planner

Company City of Scottsdale

Address 7447 E. Indian School Road

City, State Zip Scottsdale, AZ 85251

From George Rice

Project Mondrian Hotel

Project No. 30-06121-00

We are sending

☒

ATTACHED

☐

Shop Drawings

☐

Copy of letter

☐

Specifications

☐

UNDER SEPARATE COVER

☐

Prints

☐

Change Order

☐

Other

☐

Plans

☐

Samples

Copies 1

Date

Description Title Report

Copies 1 ea.

Date

Description Application and Project Narrative

Copies 1 ea full size of Interim and Permanent colors plus 12- 11x17
copies and 12 color sample Benjamin Moore -white

Date

Description

Transmitted as

☒

For approval

☐

For your use

☒

As requested

☒

For review/comment

☐

For bids due

☐

Approved

☐

Approved as noted

☐

Correct

☐

Prints returned after loan to us

☐

Other

☐

Resubmit

☐

Submit

☐

Return

☐

Other

☐

Copies for approval

☐

Copies for distributors

☐

Corrected prints

Remarks

Signature

Name

cc

82-DR-2006
REV: 09/27/2006

Chafin, Kim

From Betsy Loeb [Loeb@teneyckla.com]
Sent Monday, October 16, 2006 11:25 AM
To Chafin, Kim
Cc Bloemberg, Greg
Subject RE: question about plan review comments - Mondrian Hotel landscape & exterior lighting

Thanks, Kim, for clarifying all this. I will make sure that our plans indicate the 10 watt max and the height of the fixtures, as well as the memory tree when I resubmit them.

Betsy

From: Chafin, Kim [mailto:KChafin@Scottsdaleaz.gov]
Sent: Monday, October 16, 2006 10:16 AM
To: Betsy Loeb
Cc: Bloemberg, Greg
Subject: RE: question about plan review comments - Mondrian Hotel landscape & exterior lighting

Hi Betsy,

The lighting consultant assured me verbally that these down lights strung between the trees would be a max of 10 watts, which is one of the reasons I felt comfortable doing a Staff Approval rather than requiring DRB approval. That 10 wattage max should be referenced on the construction drawings, but if it's not, we will just call it out as a plancheck correction. The plans should also call out the height at which the lights will be located so that we can ensure adequate clearance.

Also, on the landscape resubmittal, if you could please identify the existing tree just outside the outdoor dining area that was dedicated in memory of (I can't remember the person's name), as that dedication tree will need to remain in place. I believe it's a Sweet Acacia.

Thanks!

Kim Chafin, AICP
 Senior Planner
 City of Scottsdale
 Ph 480-312-7734
 Fax 480-312-7088
 Email KChafin@ScottsdaleAZ.gov

From: Bloemberg, Greg
Sent: Thursday, October 12, 2006 10:28 AM
To: 'Betsy Loeb'
Cc: Chafin, Kim
Subject: RE: question about plan review comments

Betsy,

I am mainly concerned about harsh glare spilling out into the mall area. Opaque glass will probably solve this problem, but I can't say I am overly enthusiastic about the idea of stringing up the fixtures between the trees. We may have to take a closer look at that and we need to be sensitive to the existing character of the mall area. Also,

10/16/2006

as I stated in my comments (I think), any and all exterior lighting is subject to approval, either administratively or through the DR Board

Kim, since you are handling the DR application, I would be interested in hearing your opinion on this matter

thx,

Greg B

From: Betsy Loeb [mailto:Loeb@teneyckla.com]

Sent: Thursday, October 12, 2006 9 59 AM

To: Bloomberg, Greg

Subject question about plan review comments

Good morning, Greg-

It looks like you reviewed the landscape and lighting plans for the Mondrian Hotel that I submitted recently, and I have a question for you about your comments

I am attaching two images – one that has your comment to refresh your memory, and one that shows a sketch of what we'd like to do with the lighting. I was hoping to get your input about this before I submit my plans again. This is right at the edge of our site where it meets the city plaza area. Do I understand from your comments that we can't have the fixtures be visible at all? The fixtures will be opaque on the plaza side, does that make a difference? We are intending these as lights over the dining area on the patio, so the lights will all point down, towards the tables, not up or out into the mall.

I appreciate your response on this. I am unsure where to find specific design criteria on the city's website that would clarify this for me.

Betsy Loeb

Ten Eyck landscape architects, inc

808 E Osborn Road No 100

Phoenix Arizona 85014

Tel 602 468 0505

Fax 602 468 5775

10/16/2006

Chafin, Kim

From Chafin, Kim
Sent Friday, October 13, 2006 9 03 AM
To Bloemberg, Greg
Subject RE question about plan review comments

Greg,

The Staff Approval was for landscaping and exterior lighting

The string lights are proposed to be hung from 15 new trees to be planted along the edge of the outdoor dining area. It looks like the lights will hang over the outdoor dining area, and I'm OK with that. The lighting consultant advised me that they would have 10 watt bulbs.

I'm definitely interested in your take on this. I'll leave the relevant pages of the conceptual lighting plan that I reviewed on your desk (Sheets L7A, L5 & L13). Please have a look and let me know what you think. Hopefully the CD's are consistent with the conceptual plan.

Thanks!

Kim Chafin, AICP
 Senior Planner
 480-312-7734

From Bloemberg, Greg
Sent: Thursday, October 12, 2006 10 28 AM
To: 'Betsy Loeb'
Cc: Chafin, Kim
Subject RE question about plan review comments

Betsy,

I am mainly concerned about harsh glare spilling out into the mall area. Opaque glass will probably solve this problem, but I can't say I am overly enthusiastic about the idea of stringing up the fixtures between the trees. We may have to take a closer look at that and we need to be sensitive to the existing character of the mall area. Also, as I stated in my comments (I think), any and all exterior lighting is subject to approval, either administratively or through the DR Board.

Kim, since you are handling the DR application, I would be interested in hearing your opinion on this matter.

thx,

Greg B

From: Betsy Loeb [mailto:Loeb@teneyckla.com]
Sent: Thursday, October 12, 2006 9 59 AM
To: Bloemberg, Greg
Subject: question about plan review comments

Good morning, Greg-

It looks like you reviewed the landscape and lighting plans for the Mondrian Hotel that I submitted recently, and I have a question for you about your comments.

I am attaching two images – one that has your comment to refresh your memory, and one that shows a sketch of what we'd like to do with the lighting. I was hoping to get your input about this before I submit my plans again.

10/13/2006

This is right at the edge of our site where it meets the city plaza area. Do I understand from your comments that we can't have the fixtures be visible at all? The fixtures will be opaque on the plaza side, does that make a difference? We are intending these as lights over the dining area on the patio, so the lights will all point down, towards the tables, not up or out into the mall.

I appreciate your response on this. I am unsure where to find specific design criteria on the city's website that would clarify this for me.

Betsy Loeb

Ten Eyck landscape architects, inc

808 E Osborn Road No 100

Phoenix, Arizona 85014

Tel 602 468 0505

Fax 602 468 5775

10/13/2006



Oct. 4, 2006

Development Review Board
City of Scottsdale
7447 E. Indian School Road, Ste. 105
Scottsdale, AZ 85251

Dear City of Scottsdale Development Review Board:

The Scottsdale Convention & Visitors Bureau is the destination marketing organization that promotes the area as a world-class vacation and meetings destination. As the area grows and visitors' desires evolve, we need to plan for the future and consider which amenities *will meet our visitors' needs*.

Scottsdale's tourism market prides itself on experiences that offer the utmost in luxury. The Mondrian brand is an important addition to Scottsdale's tourism product offerings and will boost our appeal and cachet to a worldwide audience.

The Morgans Hotel Group has a reputation for offering innovative design and unique amenities to their guests. The renovations to the resort will further enhance the sophistication of the property, which is a significant choice for groups and individual travelers seeking downtown Scottsdale accommodations. The property's improvement also will add to Scottsdale's downtown revitalization and changing appeal to a wider audience of travelers discovering Scottsdale.

The Mondrian brand appeals to a high-value traveler who will not only stay at the Mondrian, but also will explore Scottsdale's dining and nightlife scene, and our boutique shops and art galleries.

A brand like Mondrian is a great addition to our current selection of world-class resorts and will enhance the tourism amenities of the community, bringing incremental visitors, and their expenditures, to Scottsdale and the surrounding area.

If you have any questions, please contact me at 480-949-2160.

Best regards,

Rachel Sacco
President & CEO

Chafin, Kim

From: John Berry [JohnBerry@BerryDamore.com]
Sent: Thursday, September 21, 2006 8:05 AM
To: Chafin, Kim
Subject: RE: Mondrian Hotel - 82-DR-2006 - Cut Sheets for Lighting Fixtures

Thanks Kim!

John V. Berry
Berry & Damore LLC
6750 E Camelback Road, Suite 100
Scottsdale, Az 85251
Mobile: 602-690-5106
Office: 480-385-2727
Fax: 480-385-2757
E-mail: jb@berrydamore.com
Home: 480-998-5626

This Berry & Damore, LLC e-mail message, and any attachment hereto, is intended only for use by the addressee(s) named herein and may contain legally privileged and/or confidential information. If you are not the intended recipient(s), or the employee or agent responsible for delivery of this message to the intended recipient(s), you are hereby notified that any use, dissemination, distribution or copying of this e-mail message, and/or any attachment hereto, is strictly prohibited. If you have received this e-mail in error, please immediately notify the sender and permanently delete the original and any copy of this message, its attachments, and any printout thereof. Thank you.

From: Chafin, Kim [mailto:KChafin@Scottsdaleaz.gov]
Sent: Thursday, September 21, 2006 8:03 AM
To: Rice, George
Cc: Betsy Loeb; Brazelton, Bill; John Berry
Subject: Mondrian Hotel - 82-DR-2006 - Cut Sheets for Lighting Fixtures

Hi George,

As I mentioned to you on Tuesday, I haven't been able to open the CD that was dropped off containing the cut sheets for the lighting fixtures. Could you please have your lighting consultant email or regular mail those cut sheets to me as soon as possible.

I've finished reviewing the other landscape and lighting plans, and they're all acceptable. I've received authorization to do a Staff Approval on the landscape and lighting (including the entry feature), as soon as I finish my review. So as soon as I receive the lighting cut sheets in a format that allows me to review it, and am able to determine that they're acceptable, I will be able to issue a Staff Approval for the landscape and lighting portions of the project. Please get those cut sheets in to me ASAP.

FYI, I will be out of the office tomorrow and Monday.

Thanks!

Kim Chafin, AICP
Senior Planner
City of Scottsdale
Ph: 480-312-7734
Fax: 480-312-7088
Email: KChafin@ScottsdaleAZ.gov

9/21/2006

Chafin, Kim

From: Galav, Lusia
Sent: Tuesday, September 19, 2006 11:20 AM
To: Chafin, Kim; Cummins, Mac
Subject: RE: Mondrian Hotel - paint color change to Brilliant White

This seems a bit much and I hardly think painting a small portion of the building is going to be effective. Better check with Sherry and Joe regarding a field trip as part of a noticed meeting. I don't recommend it in this case.

Lusia

From: Chafin, Kim
Sent: Tuesday, September 19, 2006 9:07 AM
To: Cummins, Mac
Cc: Galav, Lusia
Subject: Mondrian Hotel - paint color change to Brilliant White

Hey Boss,

We will be discussing an interim color change to Navajo White at the DRB's 10-5 study session, but the applicant intends to modify their application so that when we get to the formal hearing, they want the Board to consider a permanent color change to Brilliant White. The architect is having a little trouble producing a graphic that depicts the Brilliant White, because it doesn't show up on white paper, and also the computer colors are limited in what they can depict.

What do you think about allowing the applicant to paint a test wall with both Brilliant White and Navajo White so that the Board can walk over and check it out? Have we ever done that here before?

Please advise.

Thanks!

Kim Chafin, AICP
Senior Planner
480-312-7734

Chafin, Kim

From: Cummins, Mac
Sent: Tuesday, September 19, 2006 8:30 AM
To: Chafin, Kim; O'Connor, Mary
Cc: Meinhart, Dave; Grove, Annette; Huish, Teresa; Worth, Daniel; Galav, Lusía; Bloemberg, Greg; Fink, Pam; Morris, Joe; Grant, Randy; Gray, Frank
Subject: RE: Indian School Road Improvement Project, 18-DR-2006: Revision to Stip #6

This was actually a DRB comment at the public meeting; not a Sr. Staff comment at DRC.

Thanks.

Mac Cummins, AICP
Principal Planner
City of Scottsdale

From: Chafin, Kim
Sent: Tuesday, September 19, 2006 7:16 AM
To: O'Connor, Mary
Cc: Meinhart, Dave; Grove, Annette; Huish, Teresa; Worth, Daniel; Galav, Lusía; Cummins, Mac; Bloemberg, Greg; Fink, Pam; Morris, Joe; Grant, Randy; Gray, Frank
Subject: RE: Indian School Road Improvement Project, 18-DR-2006: Revision to Stip #6

Attached are the stips with a correction to #6, per DRC comments.
Thanks!

Kim Chafin, AICP
Senior Planner
480-312-7734

From: Chafin, Kim
Sent: Monday, September 18, 2006 4:47 PM
To: O'Connor, Mary
Cc: Meinhart, Dave; Grove, Annette; Huish, Teresa; Worth, Daniel; Galav, Lusía; Cummins, Mac; Bloemberg, Greg; Fink, Pam; Morris, Joe; Grant, Randy; Gray, Frank
Subject: Indian School Road Improvement Project, 18-DR-2006

Good Afternoon All,
Scheduled for the October 5th Development Review Board hearing, attached please find draft staff report & stips based on the 7 sheets of revised 11"x17" plans submitted by the civil engineer on September 8th, and a letter of explanation and 7 sheets of full sized plans submitted by the civil engineer on September 11th.
Per our email discussion of August 31st, please have comments back to me by Thursday, Sept 21st.
Thanks!

Kim Chafin, AICP
Senior Planner
480-312-7734

9/21/2006

Chafin, Kim

From: Brazelton, Bill [bbrazelton@DLRGROUP.com]
Sent: Thursday, September 21, 2006 8:47 AM
To: Jeffrey Nathan (E-mail)
Cc: Yasin Abdullah (E-mail); Rice, George; Chafin, Kim
Subject: FW: Mondrian Hotel - 82-DR-2006 - Cut Sheets for Lighting Fixtures

Jeff,

I will call you about this request. The PDFs of your cut sheets open up just fine for me, but did not print correctly to give to Kim as a hard copy. A CD was then made and sent to Kim.

I will forward your emailed cut sheet transmittal directly to Kim. Hopefully, that will do it.

Bill

-----Original Message-----

From: Chafin, Kim [mailto:KChafin@Scottsdaleaz.gov]
Sent: Thursday, September 21, 2006 8:03 AM
To: Rice, George
Cc: Betsy Loeb; Brazelton, Bill; jb@berrydamore.com
Subject: Mondrian Hotel - 82-DR-2006 - Cut Sheets for Lighting Fixtures

Hi George,

As I mentioned to you on Tuesday, I haven't been able to open the CD that was dropped off containing the cut sheets for the lighting fixtures. Could you please have your lighting consultant email or regular mail those cut sheets to me as soon as possible.

I've finished reviewing the other landscape and lighting plans, and they're all acceptable. I've received authorization to do a Staff Approval on the landscape and lighting (including the entry feature), as soon as I finish my review. So as soon as I receive the lighting cut sheets in a format that allows me to review it, and am able to determine that they're acceptable, I will be able to issue a Staff Approval for the landscape and lighting portions of the project. Please get those cut sheets in to me ASAP.

FYI, I will be out of the office tomorrow and Monday.

Thanks!

Kim Chafin, AICP
Senior Planner
City of Scottsdale
Ph: 480-312-7734
Fax: 480-312-7088
Email: KChafin@ScottsdaleAZ.gov

9/21/2006

Transmittal

Date. September 11, 2006

Attention Kim Chafin

Company: City of Scottsdale
Planning & Development Services
7447 E Indian School Road, Suite 105
Scottsdale, AZ 85251

Re: design images of entry sculpture

Project. Mondrian Hotel

From. Betsy Loeb

Via. Delivery

Remarks.

Kim-

Please find enclosed (13) copies each of several design images for the Mondrian Hotel that you requested. I am enclosing a copy of the artist's concept, cad perspective and a rough photo simulation. Please let me know if there is anything else you need.

Kind regards,
Betsy

Chafin, Kim

From Galav, Lusia
Sent Tuesday, September 19, 2006 11 20 AM
To Chafin, Kim, Cummins, Mac
Subject RE: Mondrian Hotel - paint color change to Brilliant White

This seems a bit much and I hardly think painting a small portion of the building is going to be effective. Better check with Sherry and Joe regarding a field trip as part of a noticed meeting. I don't recommend it in this case.

Lusia

From: Chafin, Kim
Sent: Tuesday, September 19, 2006 9 07 AM
To: Cummins, Mac
Cc: Galav, Lusia
Subject: Mondrian Hotel - paint color change to Brilliant White

Hey Boss,

We will be discussing an interim color change to Navajo White at the DRB's 10-5 study session, but the applicant intends to modify their application so that when we get to the formal hearing, they want the Board to consider a permanent color change to Brilliant White. The architect is having a little trouble producing a graphic that depicts the Brilliant White, because it doesn't show up on white paper, and also the computer colors are limited in what they can depict.

What do you think about allowing the applicant to paint a test wall with both Brilliant White and Navajo White so that the Board can walk over and check it out? Have we ever done that here before?

Please advise

Thanks!

Kim Chafin, AICP
Senior Planner
480-312-7734

9/19/2006

Letter of Transmittal

If enclosures are not as noted, please contact us at once.



DLR Group

Architecture Engineering Planning Interiors

DLR Group Marketing

6225 North 24 Street
Suite 250
Phoenix, AZ 85016-2020
tel 602/381-8580
fax 602/956-8358
phoenix@dlrgroup.com
www.dlrgroup.com

Date August 8, 2006

Deliver To Kim Chafin

Company City of Scottsdale

Address 7447 E. Indian School Rd., Suite 105

City, State Zip Scottsdale, AZ 85251

From Bill Brazelton

Project Mondrian Hotel Renovation

Project No. 30-06121-00

We are sending

☒ ATTACHED
☐ Shop Drawings
☐ Copy of letter
☐ Specifications

☐ UNDER SEPARATE COVER
☐ Prints
☐ Change Order
☐ Other

☐ Plans
☐ Samples

Copies 1

Date September 8, 2006

Description Lighting Consultant's drawings: L-1, L-3, L-9, L-10, and L-11

Copies 1

Date September 8, 2006

Description CD with the Mondrian Hotel's light fixture cut sheets

Copies

Date

Description

Transmitted as

☐ For approval
☒ For your use
☒ As requested
☐ For review/comment
☐ For bids due

☐ Approved
☐ Approved as noted
☐ Correct
☐ Prints returned after loan to us

☐ Resubmit
☐ Submit
☐ Return

☐ Copies for
☐ Copies for
☐ Corrected prints

☐ Other

Remarks

Kim,
These sheets are to be included in the partial set of drawings Betsy Loeb gave you, earlier this week.

Signature
Name

cc

Rec'd 9-8-05



September 13, 2006

George C Rice
DLR Group
6225 N 24th Street
Suite 250
Phoenix, AZ 85016

RE 82-DR-2006
Mondrian Hotel

Dear Mr Rice

The Planning and Development Services Division has completed the review of the above referenced submittal dated August 18, 2006, as well as revised plans submitted September 6, September 7, September 8, and September 12, 2006. The following **1st Review Comments** represent the review performed on the project by our team, and are intended to provide you with guidance for compliance with city codes, policies, and guidelines related to this application type.

Ordinance Related Issues

The following ordinance related issues have been identified in this first review of the project and will need to be addressed in a re-submittal prior to scheduling a hearing.

Legal/Submittal Requirements

- 1 Submit a title insurance commitment that is less than 30 days old (see attached Requirements for Submitting Evidence of Title to the City of Scottsdale Planning Department)
- 2 Update the development application to include the name of the vested owner and their signature
- 3 Update the Project Narrative to reflect all proposed changes, i.e., describe proposed interim modifications to the building paint color, as well as permanent modifications to the building paint color, landscaping, hardscape and exterior lighting
- 4 Submit one full size set and 12 sets of 11" x 17" sets of updated elevations reflecting the proposed interim paint color(s), and updated elevations reflecting the proposed permanent paint color(s)
 - a Submit 12 color samples of the proposed Brilliant White color
- 5 Submit 12 copies of 11" x 17" sets of all elevations and all lighting plans
- 6 Submit manufacturer's cut sheets of proposed light fixtures

Policy Related Issues

The following policy related issues have been identified in the first review of the project. While these issues are not as critical to scheduling the case for public hearing, they may affect the City Staff's recommendation for support of this project and should be addressed as soon as possible.

Elevation Design

- 7 The proposed color change(s) will be included as a study session item at the October 5, 2006 meeting of the Development Review Board in order to obtain the Board's input.

Please resubmit the above-referenced legal/submittal requirements, revised plans, and a written summary response addressing the comments/corrections identified above as soon as possible for further review. The City will then review the revisions to determine if it is ready to be scheduled for a hearing date.

In an effort to get this development request to a Development Review Board, City staff has identified the following potential schedules (read schedule left to right):

Track	Response/resubmittal by applicant (complete set of revisions)	City to provide status update	Potential DRB Hearing Date
17	No later than 9/29/2006	10/13/2006	11/16/2006
18	No later than 10/13/2006	10/27/2006	12/13/2006
19	No later than 10/27/2006	11/10/2006	12/13/2006

I understand your client's need to move as expeditiously as possible to have everything in place for the grand opening in December. While the above-referenced timetable reflects the Department's official track schedule based on the submittal date of your application, I will do everything possible to get this project moved up to the Development Review Board for formal action at its November 2nd meeting. I will rely on your team's assistance and cooperation in this effort.

PLEASE CALL 480-312-7000 TO SCHEDULE A RESUBMITTAL MEETING WITH ME PRIOR TO YOUR PLANNED RESUBMITTAL DATE. THIS WILL HELP MAKE SURE I'M AVAILABLE TO REVIEW YOUR RESUBMITTAL AND PREVENT ANY UNNECESSARY DELAYS.

This schedule is based on the original submittal track and relies on a timely, complete and accurate response/resubmittal to the items addressed in this letter. Please be advised that the 1st Review Comments are valid for a period of 45 days from the date on this letter. Failure to resubmit within the 45 days will require the project to begin a new track.

If you have any questions, or need further assistance please contact me at 480-312-7734 or at kchafin@ScottsdaleAZ.gov

Sincerely,



Kim Chafin, AICP
Senior Planner

Attachment: Requirements for Submitting Evidence of Title to the City of Scottsdale Planning Department

cc

Yasin Abdullah
Morgans Hotel Group
475 Tenth Avenue
New York, NY 10018

John Berry
Berry & Damore, LLC
6750 E Camelback Rd, Suite 100
Scottsdale, AZ 85251

**Requirements for Submitting
Evidence of Title
to the City of Scottsdale
Planning Department**

The City of Scottsdale planning department requires applicants for various zoning applications, building permits and other approvals to provide evidence of land ownership. Unless city staff directs otherwise, the required evidence shall be a title insurance commitment meeting the following requirements:

- 1 The applicant shall instruct the title insurance company to prepare a normal title insurance commitment
- 2 The title commitment must cover the whole project site, just as if the city were a commercial real estate developer who was going to buy the whole site from whoever owns it today
- 3 The title insurance commitment must be in the same form and have the same wording that the title insurer usually uses when a sophisticated real estate purchaser is buying land from a sophisticated seller. For example, it must not have any extra language that is not in a normal title insurance commitment for a straightforward land purchase
- 4 The City of Scottsdale must be listed as the proposed insured
- 5 The proposed insurance amount must be a reasonable estimate of the actual dollar value of the whole site. (The price for the most recent arms-length sale of the whole site is usually an acceptable amount.)
- 6 The Schedule B requirements must call for:
 - a A deed from the current owner to the city
 - b Releases of all liens, as if the city were going to pay cash for the land and not assume any liens or take subject to any liens
 - c Any other specific payments or specific document recordings that the title insurer would normally call for (such as payment of delinquent property taxes)
- 7 The Schedule B exceptions must show any other specific title matters that may exist
- 8 Title companies sometimes state in their title commitments that they will update the title search before issuing a title insurance policy. That's o k if the language is clear that the update will only include new title documents that are recorded after the title commitment date. For example, it is o k to have wording that says "Additional items may be added based on new documents recorded before closing." But there must not be vague wording such as this "Check with title examiner for additional items before closing."
- 9 The title commitment must be less than 30 days old
- 10 Both "standard coverage" and "extended coverage" title commitments are acceptable. (The title information on an extended coverage commitment must be identical to the title information on a standard coverage commitment. The only difference is that the Schedule B requirements will call for a survey and will allow the title company to add Schedule B exceptions or Schedule B requirements for any problems the survey reveals.)
- 11 There is no need to open an escrow to make the dedication. The city will record the dedication directly without sending it through the title company. Often, the city will not actually buy the title insurance described in the commitment or require the applicant to buy it. But, if the city decides to do it (or require the applicant to do it), then the city or the applicant will follow up with the title insurer to pay the insurance premium and satisfy the Schedule B requirements so that the title insurer will issue the policy.
- 12 The applicant shall inform city staff in writing of any and all title changes that occur after the title commitment is issued.
- 13 The city reserves the right for city staff to require additional evidence of title, including but not limited to an extended title insurance policy in favor of the city.

Chafin, Kim

From: Chafin, Kim
Sent: Wednesday, September 13, 2006 10:27 AM
To: 'Brazelton, Bill'
Cc: Yasin Abdullah (E-mail); Rice, George; Galav, Lusia; Clack, Michael L
Subject: FW: Mondrian Hotel Scottsdale - Plan Review information

Bill,
September 22nd is the earliest we can promise you, though we will try to get it done sooner if possible.
Thanks!

Kim Chafin, AICP
Senior Planner
City of Scottsdale
Ph: 480-312-7734
Fax: 480-312-7088
Email: KChafin@ScottsdaleAZ.gov

From: Chafin, Kim
Sent: Monday, September 11, 2006 12:31 PM
To: 'Brazelton, Bill'
Cc: Yasin Abdullah (E-mail); Rice, George
Subject: RE: Mondrian Hotel Scottsdale - Plan Review information

Hi Bill,
Please allow me a little time to look into this for you. I understand the urgency, so I'll get back to you ASAP.
Thanks!

Kim Chafin, AICP
Senior Planner
City of Scottsdale
Ph: 480-312-7734
Fax: 480-312-7088
Email: KChafin@ScottsdaleAZ.gov

From: Brazelton, Bill [<mailto:bbrazelton@DLRGROUP.com>]
Sent: Monday, September 11, 2006 12:02 PM
To: Chafin, Kim
Cc: Yasin Abdullah (E-mail); Rice, George
Subject: RE: Mondrian Hotel Scottsdale - Plan Review information

Hi Kim,

I talked with the owner's project manager after sending that confirming email, this morning.

Will having the Pkg # 2 plan check completed earlier than Sept 22nd be possible? If Pkg # 3 shifts one week later and Pkg # 2 finishes one week sooner, this will enable the contractor to start new construction in the Lobby and related spaces as demolition work is being completed. The demo permit has been issued.

Thank you for your consideration, Bill

9/13/2006

-----Original Message-----

From: Chafin, Kim [mailto:KChafin@Scottsdaleaz.gov]
Sent: Friday, September 08, 2006 4:05 PM
To: Brazelton, Bill; Galav, Lusia
Cc: Clack, Michael L
Subject: RE: Mondrian Hotel Scottsdale - Plan Review information

Hi Bill,

Our Chief Building Official indicates his team is targeting Sept 22nd or Sept 24th to have all plancheck corrections ready for your team to pick up.

Thanks!

Kim Chafin, AICP
Senior Planner
City of Scottsdale
Ph: 480-312-7734
Fax: 480-312-7088
Email: KChafin@ScottsdaleAZ.gov

From: Brazelton, Bill [mailto:bbrazelton@DLRGROUP.com]
Sent: Friday, September 08, 2006 2:08 PM
To: Galav, Lusia
Cc: Chafin, Kim
Subject: Mondrian Hotel Scottsdale - Plan Review information

Good afternoon Lusia,

The two commercial remodel - interior submittals for the Mondrian Hotel are:

Plan Check # 5033-06 for the Renovation: Lobby, Reception and Bar logged in August 24th.

Plan Check # 5033-06-1 for the Demolition and Remodel: Hotel Lounge logged in September 5th.

Please contact me if additional information is needed.

Thank you,

Bill Brazelton, AIA

DLR Group
6225 North 24th Street, Suite 250
Phoenix, AZ 85016

Tel (602) 381-8580 Fax (602) 956-8358

e-mail bbrazelton@dlrgroup.com

Chafin, Kim

From: Clack, Michael L
Sent: Wednesday, September 13, 2006 9:03 AM
To: Chafin, Kim
Subject: RE: Mondrian Hotel Scottsdale - Plan Review information

The 22nd is the best I can promise, but we will speed it up every chance we get. If the architect wishes to discuss further please have him give me a call.

From: Chafin, Kim
Sent: Monday, September 11, 2006 12:29 PM
To: Clack, Michael L
Subject: FW: Mondrian Hotel Scottsdale - Plan Review information

Hi Michael,
Thanks so much for your assistance last week.
The Mondrian now wants to know if Pkg #2 plancheck can be completed earlier than Sept 22nd (see email below). What are your thoughts on this? Please let me know.
Thanks again!

Kim Chafin, AICP
Senior Planner
480-312-7734

From: Brazelton, Bill [mailto:bbrazelton@DLRGROUP.com]
Sent: Monday, September 11, 2006 12:02 PM
To: Chafin, Kim
Cc: Yasin Abdullah (E-mail); Rice, George
Subject: RE: Mondrian Hotel Scottsdale - Plan Review information

Hi Kim,

I talked with the owner's project manager after sending that confirming email, this morning.

Will having the Pkg # 2 plan check completed earlier than Sept 22nd be possible? If Pkg # 3 shifts one week later and Pkg # 2 finishes one week sooner, this will enable the contractor to start new construction in the Lobby and related spaces as demolition work is being completed. The demo permit has been issued.

Thank you for your consideration, Bill

-----Original Message-----

From: Chafin, Kim [mailto:KChafin@Scottsdaleaz.gov]
Sent: Friday, September 08, 2006 4:05 PM
To: Brazelton, Bill; Galav, Lusia
Cc: Clack, Michael L
Subject: RE: Mondrian Hotel Scottsdale - Plan Review information

Hi Bill,
Our Chief Building Official indicates his team is targeting Sept 22nd or Sept 24th to have all plancheck corrections ready for your team to pick up.

9/13/2006

Thanks!

Kim Chafin, AICP
Senior Planner
City of Scottsdale
Ph: 480-312-7734
Fax: 480-312-7088
Email: KChafin@ScottsdaleAZ.gov

From: Brazelton, Bill [mailto:bbrazelton@DLRGROUP.com]
Sent: Friday, September 08, 2006 2:08 PM
To: Galav, Lusia
Cc: Chafin, Kim
Subject: Mondrian Hotel Scottsdale - Plan Review information

Good afternoon Lusia,

The two commercial remodel - interior submittals for the Mondrian Hotel are:

Plan Check # 5033-06 for the Renovation: Lobby, Reception and Bar logged in August 24th.

Plan Check # 5033-06-1 for the Demolition and Remodel: Hotel Lounge logged in September 5th.

Please contact me if additional information is needed.

Thank you,

Bill Brazelton, AIA

DLR Group

6225 North 24th Street, Suite 250
Phoenix, AZ 85016

Tel (602) 381-8580 Fax (602) 956-8358

e-mail bbrazelton@dlrgroup.com

Chafin, Kim

From: Betsy Loeb [Loeb@teneyckla.com]
Sent: Friday, September 15, 2006 8:12 AM
To: Chafin, Kim
Subject: RE: Mondrian Hotel

Kim-

Thanks for the response. I'll try to be more patient!

Betsy

From: Chafin, Kim [mailto:KChafin@Scottsdaleaz.gov]
Sent: Friday, September 15, 2006 8:06 AM
To: Betsy Loeb
Subject: RE: Mondrian Hotel

Betsy,
I am working on it. I will let you know as soon as I have made a determination.
Thanks!

Kim Chafin, AICP
Senior Planner
City of Scottsdale
Ph: 480-312-7734
Fax: 480-312-7088
Email: KChafin@ScottsdaleAZ.gov

From: Betsy Loeb [mailto:Loeb@teneyckla.com]
Sent: Wednesday, September 13, 2006 2:37 PM
To: Chafin, Kim
Subject: Mondrian Hotel

Hi, Kim-

I don't mean to be a pest, but I was wondering if you think I can get your approval to submit my landscape drawing set any time soon. I'll be out of the office next week and it'd make everyone happy if I could get the set to the City this week.

Thanks!

Betsy Loeb

Ten Eyck landscape architects, inc.
808 E. Osborn Road, No. 100
Phoenix, Arizona 85014
Tel: 602.468.0505
Fax: 602.468.5775

9/15/2006

Chafin, Kim

From John Berry [JohnBerry@BerryDamore.com]
Sent Friday, September 08, 2006 4 24 PM
To Chafin, Kim
Subject RE: Mondrian Hotel (82-DR-2006) DRB Study Session rescheduled from 9-21-06 to 10-5-06

Kim Thanks for all your time on short notice and have a great weekend John

John V Berry
 Berry & Damore LLC
 6750 E Camelback Road, Suite 100
 Scottsdale, Az 85251
 Mobile 602-690-5106
 Office 480-385-2727
 Fax 480-385-2757
 E-mail jb@berrydamore.com
 Home 480-998-5626

This Berry & Damore, LLC e-mail message, and any attachment hereto, is intended only for use by the addressee(s) named herein and may contain legally privileged and/or confidential information. If you are not the intended recipient(s), or the employee or agent responsible for delivery of this message to the intended recipient(s), you are hereby notified that any use, dissemination, distribution or copying of this e-mail message, and/or any attachment hereto, is strictly prohibited. If you have received this e-mail in error, please immediately notify the sender and permanently delete the original and any copy of this message, its attachments, and any printout thereof. Thank you

From: Chafin, Kim [mailto:KChafin@Scottsdaleaz.gov]
Sent: Friday, September 08, 2006 1 59 PM
To: grice@dlrgroup.com
Cc: bbrazelton@dlrgroup.com, John Berry, loeb@teneyckla.com, Galav, Lusia, Cummins, Mac, Rhoades, Abbey, McClay, Doris, Fuller, Bonnie
Subject: Mondrian Hotel (82-DR-2006) DRB Study Session rescheduled from 9-21-06 to 10-5-06

Hi George,

In our discussion at this morning's meeting, I indicated I had conducted a cursory review of the landscape & lighting plans. I am in the process of doing a thorough to determine if those plans can be approved at staff level.

- I understand you will contact your lighting consultant and ensure that he sends me the missing pages of the lighting plan as well as the manufacturer's cut sheets for the fixtures
- Regarding the entry feature at Buckboard, I understand there will be two features resembling oversized doors measuring 25 feet high and 12½ wide. It appears these will be visible from Old Town. As such, please submit at your earliest convenience a perspective (or photosim) of the entry from Buckboard and Trail and 1st Avenue.

Per your request, we are pulling the project off of the DRB 9-21 study session agenda, and rescheduling it for DRB 10-5 study session to give the design team additional time to prepare a presentation. Please send me 12 color samples of the Brilliant White by 9-15. The study session topics will cover

- Request for an interim change of the stairwell color to Navajo White
- Request for a permanent change of the entire building color to Brilliant White

Thanks!

9/11/2006

Kim Chafin, AICP
Senior Planner
City of Scottsdale
Ph 480-312-7734
Fax 480-312-7088
Email KChafin@ScottsdaleAZ.gov

Chafin, Kim

From Brazelton, Bill [bbrazelton@DLRGROUP.com]
Sent Friday, September 08, 2006 5:02 PM
To Chafin, Kim
Subject RE: Mondrian Hotel Scottsdale - Plan Review information

Great to hear from you so soon, Kim. Thank you!

-----Original Message-----

From: Chafin, Kim [mailto:KChafin@Scottsdaleaz.gov]
Sent: Friday, September 08, 2006 4:05 PM
To: Brazelton, Bill, Galav, Lusia
Cc: Clack, Michael L
Subject: RE: Mondrian Hotel Scottsdale - Plan Review information

Hi Bill,
Our Chief Building Official indicates his team is targeting Sept 22nd or Sept 24th to have all plancheck corrections ready for your team to pick up.

Thanks!

Kim Chafin, AICP
Senior Planner
City of Scottsdale
Ph: 480-312-7734
Fax: 480-312-7088
Email: KChafin@ScottsdaleAZ.gov

From: Brazelton, Bill [mailto:bbrazelton@DLRGROUP.com]
Sent: Friday, September 08, 2006 2:08 PM
To: Galav, Lusia
Cc: Chafin, Kim
Subject: Mondrian Hotel Scottsdale - Plan Review information

Good afternoon Lusia,

The two commercial remodel - interior submittals for the Mondrian Hotel are:

Plan Check # 5033-06 for the Renovation: Lobby, Reception and Bar logged in August 24th

Plan Check # 5033-06-1 for the Demolition and Remodel: Hotel Lounge logged in September 5th

Please contact me if additional information is needed.

Thank you,

Bill Brazelton, AIA

9/11/2006

DLR Group

6225 North 24th Street, Suite 250
Phoenix, AZ 85016

Tel (602) 381-8580 Fax (602) 956-8358

e-mail bbrazelton@dlrgroup.com

Chafin, Kim

From Chafin, Kim
Sent Friday, September 08, 2006 1 59 PM
To 'grice@dlrgroup.com'
Cc 'bbrazelton@dlrgroup.com', 'jb@berrydamore.com', 'loeb@teneyckla.com', Galav, Lusia, Cummins, Mac, Rhoades, Abbey, McClay, Doris, Fuller, Bonnie
Subject Mondrian Hotel (82-DR-2006) DRB Study Session rescheduled from 9-21-06 to 10-5-06

Hi George,

In our discussion at this morning's meeting, I indicated I had conducted a cursory review of the landscape & lighting plans. I am in the process of doing a thorough to determine if those plans can be approved at staff level.

- I understand you will contact your lighting consultant and ensure that he sends me the missing pages of the lighting plan as well as the manufacturer's cut sheets for the fixtures
- Regarding the entry feature at Buckboard, I understand there will be two features resembling oversized doors measuring 25 feet high and 12½ wide. It appears these will be visible from Old Town. As such, please submit at your earliest convenience a perspective (or photosim) of the entry from Buckboard and Trail and 1st Avenue.

Per your request, we are pulling the project off of the DRB 9-21 study session agenda, and rescheduling it for DRB 10-5 study session to give the design team additional time to prepare a presentation. Please send me 12 color samples of the Brilliant White by 9-15. The study session topics will cover:

- Request for an interim change of the stairwell color to Navajo White
- Request for a permanent change of the entire building color to Brilliant White

Thanks!

Kim Chafin, AICP
 Senior Planner
 City of Scottsdale
 Ph 480-312-7734
 Fax 480-312-7088
 Email KChafin@ScottsdaleAZ.gov

9/8/2006

Chafin, Kim

From Chafin, Kim
Sent Monday, September 11, 2006 12:31 PM
To 'Brazelton, Bill'
Cc Yasin Abdullah (E-mail), Rice, George
Subject RE: Mondrian Hotel Scottsdale - Plan Review information

Hi Bill,
Please allow me a little time to look into this for you. I understand the urgency, so I'll get back to you ASAP.
Thanks!

Kim Chafin, AICP
Senior Planner
City of Scottsdale
Ph 480-312-7734
Fax 480-312-7088
Email KChafin@ScottsdaleAZ.gov

From: Brazelton, Bill [<mailto:bbrazelton@DLRGROUP.com>]
Sent: Monday, September 11, 2006 12:02 PM
To: Chafin, Kim
Cc: Yasin Abdullah (E-mail), Rice, George
Subject: RE: Mondrian Hotel Scottsdale - Plan Review information

Hi Kim,

I talked with the owner's project manager after sending that confirming email, this morning.

Will having the Pkg # 2 plan check completed earlier than Sept 22nd be possible? If Pkg # 3 shifts one week later and Pkg # 2 finishes one week sooner, this will enable the contractor to start new construction in the Lobby and related spaces as demolition work is being completed. The demo permit has been issued.

Thank you for your consideration, Bill

-----Original Message-----

From: Chafin, Kim [<mailto:KChafin@Scottsdaleaz.gov>]
Sent: Friday, September 08, 2006 4:05 PM
To: Brazelton, Bill, Galav, Lusia
Cc: Clack, Michael L
Subject: RE: Mondrian Hotel Scottsdale - Plan Review information

Hi Bill,
Our Chief Building Official indicates his team is targeting Sept 22nd or Sept 24th to have all plancheck corrections ready for your team to pick up.

Thanks!

Kim Chafin, AICP
Senior Planner
City of Scottsdale
Ph 480-312-7734
Fax 480-312-7088

9/11/2006

Email KChafin@ScottsdaleAZ.gov

From: Brazelton, Bill [mailto:bbrazelton@DLRGROUP.com]
Sent: Friday, September 08, 2006 2:08 PM
To: Galav, Lusia
Cc: Chafin, Kim
Subject: Mondrian Hotel Scottsdale - Plan Review information

Good afternoon Lusia,

The two commercial remodel - interior submittals for the Mondrian Hotel are

Plan Check # 5033-06 for the Renovation Lobby, Reception and Bar logged in August 24th

Plan Check # 5033-06-1 for the Demolition and Remodel Hotel Lounge logged in September 5th

Please contact me if additional information is needed

Thank you,

Bill Brazelton, AIA

DLR Group
6225 North 24th Street, Suite 250
Phoenix, AZ 85016

Tel (602) 381-8580 Fax (602) 956-8358

e-mail bbrazelton@dlrgroup.com

Chafin, Kim

From Chafin, Kim
Sent Monday, September 11, 2006 12 30 PM
To 'Brazelton, Bill'
Cc Yasin Abdullah (E-mail), Jeffrey Nathan (E-mail), Rice, George
Subject RE Mondrian Hotel Scottsdale - Plan Review information

Hi Bill,
I have received them, although I have not yet had an opportunity to review them I'll be sure to you know if I need anything
Thanks!

Kim Chafin, AICP
Senior Planner
City of Scottsdale
Ph 480-312-7734
Fax 480-312-7088
Email KChafin@ScottsdaleAZ.gov

From: Brazelton, Bill [<mailto:bbrazelton@DLRGROUP.com>]
Sent: Monday, September 11, 2006 10 54 AM
To: Chafin, Kim
Cc: Yasin Abdullah (E-mail), Jeffrey Nathan (E-mail), Rice, George
Subject: FW Mondrian Hotel Scottsdale - Plan Review information

Good morning Kim,

Have you received the Lighting Design drawings and CD of the cut sheets I delivered to the front desk, Friday afternoon?

Please contact me if additional copies are needed or if there are any format problems

Best Regards, Bill
-----Original Message-----

From: Chafin, Kim [<mailto:KChafin@Scottsdaleaz.gov>]
Sent: Friday, September 08, 2006 4 05 PM
To Brazelton, Bill, Galav, Lusia
Cc: Clack, Michael L
Subject: RE Mondrian Hotel Scottsdale - Plan Review information

Hi Bill,
Our Chief Building Official indicates his team is targeting Sept 22nd or Sept 24th to have all plancheck corrections ready for your team to pick up

Thanks!

Kim Chafin, AICP
Senior Planner
City of Scottsdale
Ph 480-312-7734
Fax 480-312-7088
Email KChafin@ScottsdaleAZ.gov

9/11/2006

From: Brazelton, Bill [mailto:bbrazelton@DLRGROUP.com]
Sent: Friday, September 08, 2006 2:08 PM
To: Galav, Lusia
Cc: Chafin, Kim
Subject: Mondrian Hotel Scottsdale - Plan Review information

Good afternoon Lusia,

The two commercial remodel - interior submittals for the Mondrian Hotel are

Plan Check # 5033-06 for the Renovation Lobby, Reception and Bar logged in August 24th

Plan Check # 5033-06-1 for the Demolition and Remodel Hotel Lounge logged in September 5th

Please contact me if additional information is needed

Thank you,

Bill Brazelton, AIA

DLR Group

6225 North 24th Street, Suite 250
Phoenix, AZ 85016

Tel (602) 381-8580 Fax (602) 956-8358

e-mail bbrazelton@dlrgroup.com

Chafin, Kim

From: Brazelton, Bill [bbrazelton@DLRGROUP.com]
Sent: Friday, September 08, 2006 2:08 PM
To: Galav, Lusia
Cc: Chafin, Kim
Subject: Mondrian Hotel Scottsdale - Plan Review information

Good afternoon Lusia,

The two commercial remodel - interior submittals for the Mondrian Hotel are:

Plan Check # 5033-06 for the Renovation: Lobby, Reception and Bar logged in August 24th.

Plan Check # 5033-06-1 for the Demolition and Remodel: Hotel Lounge logged in September 5th.

Please contact me if additional information is needed.

Thank you,

Bill Brazelton, AIA

DLR Group

6225 North 24th Street, Suite 250
Phoenix, AZ 85016

Tel (602) 381-8580 Fax (602) 956-8358

e-mail bbrazelton@dlrgroup.com

Chafin, Kim

From: Chafin, Kim
Sent: Friday, September 08, 2006 1:59 PM
To: 'grice@dlrgroup.com'
Cc: 'bbrazelton@dlrgroup.com'; 'jb@berrydamore.com'; 'loeb@teneyckla.com'; Galav, Lusia; Cummins, Mac; Rhoades, Abbey; McClay, Doris; Fuller, Bonnie
Subject: Mondrian Hotel (82-DR-2006) DRB Study Session rescheduled from 9-21-06 to 10-5-06

Hi George,

In our discussion at this morning's meeting, I indicated I had conducted a cursory review of the landscape & lighting plans. I am in the process of doing a thorough to determine if those plans can be approved at staff level.

- I understand you will contact your lighting consultant and ensure that he sends me the missing pages of the lighting plan as well as the manufacturer's cut sheets for the fixtures.
- Regarding the entry feature at Buckboard, I understand there will be two features resembling oversized doors measuring 25 feet high and 12½ wide. It appears these will be visible from Old Town. As such, please submit at your earliest convenience a perspective (or photosim) of the entry from Buckboard and Trail and 1st Avenue.

Per your request, we are pulling the project off of the DRB 9-21 study session agenda, and rescheduling it for DRB 10-5 study session to give the design team additional time to prepare a presentation. Please send me 12 color samples of the Brilliant White by 9-15. The study session topics will cover:

- Request for an interim change of the stairwell color to Navajo White.
- Request for a permanent change of the entire building color to Brilliant White.

Thanks!

Kim Chafin, AICP
Senior Planner
City of Scottsdale
Ph: 480-312-7734
Fax: 480-312-7088
Email: KChafin@ScottsdaleAZ.gov

9/8/2006

Chafin, Kim

From: Chafin, Kim
Sent: Tuesday, August 29, 2006 3:51 PM
To: Wood, Bob
Subject: 82-DR-2006 Mondrian repaint to Navajo white

Hi Bob,
We spoke briefly about this "conceptually" last Thursday, but I wasn't sure if you've actually had a chance to review the proposal. I'd really appreciate your input on this. I understand it may be a controversial project.
Thanks!

Kim Chafin, AICP
Senior Planner
480-312-7734

8/30/2006