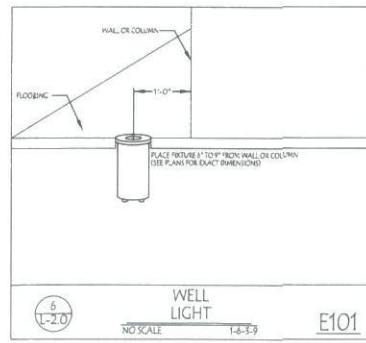
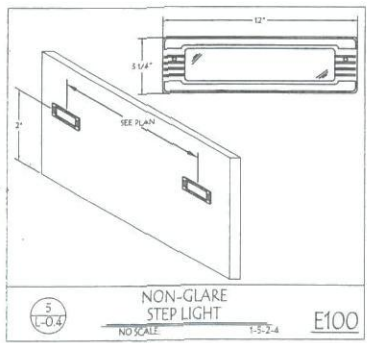
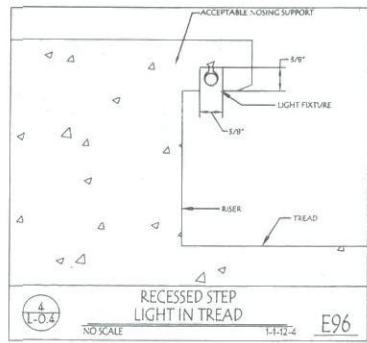
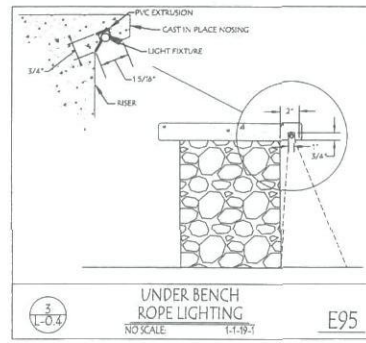
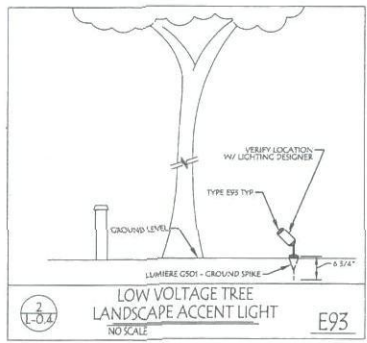
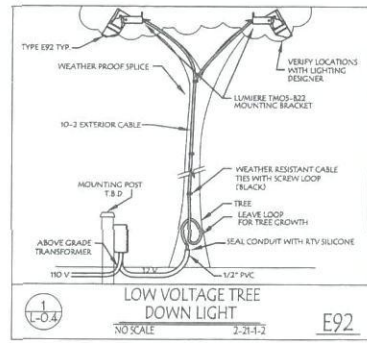


D oubleton
 A rchitecture
 P hoto
 C hannel
 V ideo
 I nstallation

TYPE	ADAPTIVE	DESCRIPTION	SCALE	BASE #	IC	AT	DEPTH	HEIGHT	ADJUSTING	TRANSFORMER	BALLAST	VOLTS	WATTS	FINISH	FINISH	LAMP	WARRANTY	WARRANTY	WARRANTY	WARRANTY	WARRANTY	WARRANTY	WARRANTY	SPECIAL NOTES
E92	EXTERI.ON	RECESSED DOWNLIGHT	N/A	REAR	NO	NO	1 1/2"	1 1/4"	ALUMINUM	N/A	N/A	200V	20W	BRN	BRN	LED	2 YEAR	2 YEAR	2 YEAR	2 YEAR	2 YEAR	2 YEAR	2 YEAR	VERIFY LOCATION WITH LIGHTING DESIGNER
E93	EXTERI.ON	RECESSED DOWNLIGHT	N/A	REAR	NO	NO	1 1/2"	1 1/4"	ALUMINUM	N/A	N/A	200V	20W	BRN	BRN	LED	2 YEAR	2 YEAR	2 YEAR	2 YEAR	2 YEAR	2 YEAR	2 YEAR	VERIFY LOCATION WITH LIGHTING DESIGNER
E94	EXTERI.ON	RECESSED DOWNLIGHT	N/A	REAR	NO	NO	1 1/2"	1 1/4"	ALUMINUM	N/A	N/A	200V	20W	BRN	BRN	LED	2 YEAR	2 YEAR	2 YEAR	2 YEAR	2 YEAR	2 YEAR	2 YEAR	VERIFY LOCATION WITH LIGHTING DESIGNER
E95	EXTERI.ON	RECESSED DOWNLIGHT	N/A	REAR	NO	NO	1 1/2"	1 1/4"	ALUMINUM	N/A	N/A	200V	20W	BRN	BRN	LED	2 YEAR	2 YEAR	2 YEAR	2 YEAR	2 YEAR	2 YEAR	2 YEAR	VERIFY LOCATION WITH LIGHTING DESIGNER
E96	EXTERI.ON	RECESSED DOWNLIGHT	N/A	REAR	NO	NO	1 1/2"	1 1/4"	ALUMINUM	N/A	N/A	200V	20W	BRN	BRN	LED	2 YEAR	2 YEAR	2 YEAR	2 YEAR	2 YEAR	2 YEAR	2 YEAR	VERIFY LOCATION WITH LIGHTING DESIGNER
E97	EXTERI.ON	RECESSED DOWNLIGHT	N/A	REAR	NO	NO	1 1/2"	1 1/4"	ALUMINUM	N/A	N/A	200V	20W	BRN	BRN	LED	2 YEAR	2 YEAR	2 YEAR	2 YEAR	2 YEAR	2 YEAR	2 YEAR	VERIFY LOCATION WITH LIGHTING DESIGNER
E98	EXTERI.ON	RECESSED DOWNLIGHT	N/A	REAR	NO	NO	1 1/2"	1 1/4"	ALUMINUM	N/A	N/A	200V	20W	BRN	BRN	LED	2 YEAR	2 YEAR	2 YEAR	2 YEAR	2 YEAR	2 YEAR	2 YEAR	VERIFY LOCATION WITH LIGHTING DESIGNER
E99	EXTERI.ON	RECESSED DOWNLIGHT	N/A	REAR	NO	NO	1 1/2"	1 1/4"	ALUMINUM	N/A	N/A	200V	20W	BRN	BRN	LED	2 YEAR	2 YEAR	2 YEAR	2 YEAR	2 YEAR	2 YEAR	2 YEAR	VERIFY LOCATION WITH LIGHTING DESIGNER
E100	EXTERI.ON	RECESSED DOWNLIGHT	N/A	REAR	NO	NO	1 1/2"	1 1/4"	ALUMINUM	N/A	N/A	200V	20W	BRN	BRN	LED	2 YEAR	2 YEAR	2 YEAR	2 YEAR	2 YEAR	2 YEAR	2 YEAR	VERIFY LOCATION WITH LIGHTING DESIGNER
E101	EXTERI.ON	RECESSED DOWNLIGHT	N/A	REAR	NO	NO	1 1/2"	1 1/4"	ALUMINUM	N/A	N/A	200V	20W	BRN	BRN	LED	2 YEAR	2 YEAR	2 YEAR	2 YEAR	2 YEAR	2 YEAR	2 YEAR	VERIFY LOCATION WITH LIGHTING DESIGNER



- Sereno Canyon Landscape Lighting Notes:**
- Backlit signage will be used at the Alameda Street entry.
 - Type E93 low voltage fixtures will be used to accent various landscape items
 - Type E94 sign lighting fixtures utilize barn doors to help prevent glare
 - Types E97 & E98 are lowered bollard that do not allow direct view of the lamp
 - Type E99 fixture is for lighting the gates beyond the guardhouse (quantity of 4) fixtures)
 - Type E100 fixtures is lowered and does not allow direct viewing of the lamp above the horizontal line
 - Type E101 low voltage uplights are used at the Retreat and Guardhouse buildings underneath the roof overhang
 - Additional lighting will be provided inside the Retreat Pool & Spa
 - No fixture shall be mounted higher than 16 feet above grade
 - No individual lamp shall exceed 250 watts
 - Lighting Curfews:
 - The downlights and uplights at the Retreat shall operate from dusk until 12AM
 - The downlights and uplights at the Guardhouse and Entry Gate shall operate from dusk until dawn
 - The bollards and sign lighters at the Retreat, Guard House, and Entry shall operate from dusk until dawn
 - The landscape lighting fixtures shall operate from dusk until 12AM
 - The steplighting and other exterior fixtures at the Retreat shall operate from dusk until 12AM

ADAPTIVE DESIGN GROUP INC ARCHITECTURAL LIGHTING DETAILS ARE FOR REFERENCE ONLY. PLEASE REFER TO THE ARCHITECTS INTERIOR DETAILING FOR FINAL DIMENSIONS. COORDINATE ALL CABINET LIGHTING & POWER APPLICATIONS WITH CABINET MAKER.

Principals
 Glenn Johnson LC, IALD
 Kim Miller LC, IALD
 Chad Moore PE

4525 South Woodloch Blvd #100
 Salt Lake City, Utah 84124
 801-274-9600 (Office)
 801-274-9600 (Fax)

Email: glenn.johnson@adgroupinc.com
 kim.miller@adgroupinc.com
 chad.moore@adgroupinc.com
 Website: www.adgroupinc.com

CONTRACTED SCOPE OF SERVICE
 1. ARCHITECTURAL DESIGN & SPECIFICATIONS
 2. LIGHTING CONTROL DESIGN
 3. ELECTRICAL PROGRAMMING
 4. ELECTRICAL ENGINEERING
 5. CONSTRUCTION MANAGEMENT
 6. SPECIAL LIGHTING & SCENE SETTING
 7. CLIMATE LIGHTING DESIGN
 8. CUSTOMIZED BOLLARD DESIGN
 9. TELEPHONE SYSTEM DESIGN
 10. CHROME NETWORK DESIGN
 11. DISTRIBUTED AUDIO-VISIO DESIGN
 12. DISCUSSANT SYSTEM COORDINATION
 13. SYSTEMS INTEGRATION DESIGN

ARCHITECT
 INTERIOR DESIGNER
 SLAIDER

SERENO CANYON

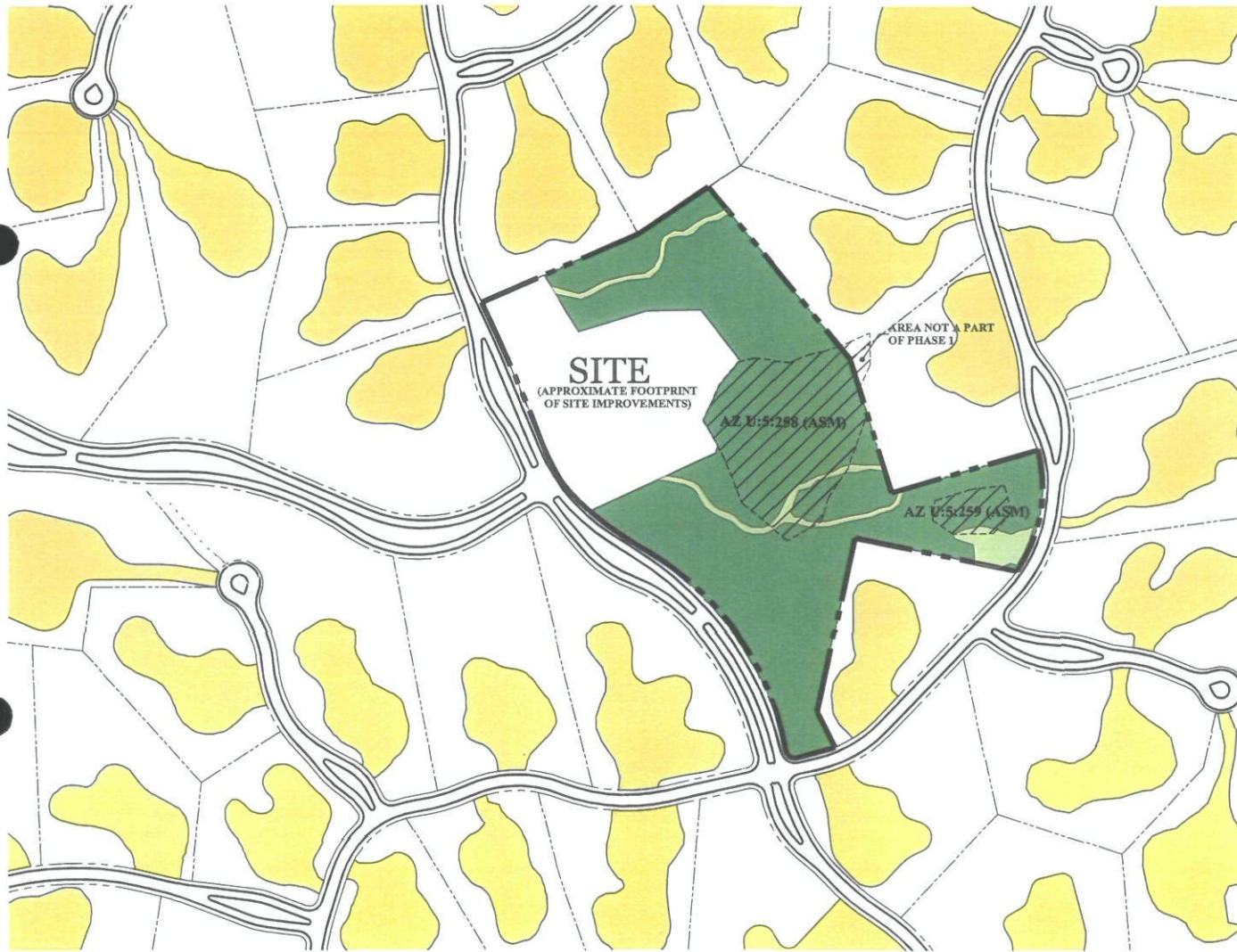
PRINCIPAL SIGNATURE
 © Copyright Reserved
 ADAPTIVE DESIGN GROUP INC
 2007

REVISIONS

NO.	DESCRIPTION	DATE

DATE: 11-27-07 SCALE: 1/8"=1'-0"
 JOB NUMBER: 20070242 DRAWN BY: SD/ML/JY

LANDSCAPE LIGHTING DETAILS



COMMUNITY CENTER: N.A.O.S. TABLE

N.A.O.S. PROVIDED:
 -UNDISTURBED: 337,555 SQ. FT. (7.7 AC.)
 -REVEGETATED: 15,704 SQ. FT. (.36 AC.)

TOTAL N.A.O.S PROVIDED (SQ. FT.): 353,259 (8.1 AC)

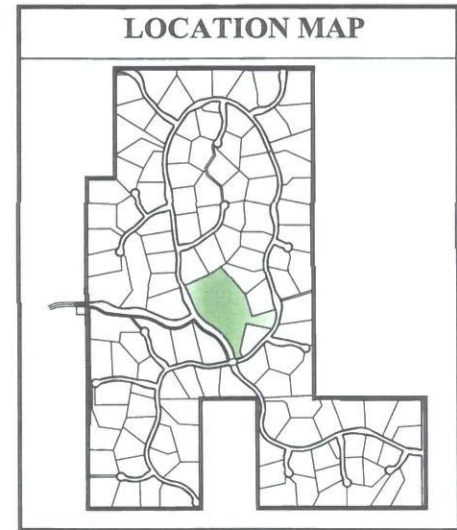
NOTE:

THE 8.1 ACRES OF N.A.O.S. PROVIDED FOR THE COMMUNITY CENTER PARCEL SHALL BE CREDITED AGAINST AN OVERALL PHASE 1 N.A.O.S. REQUIREMENT OF 83.0 ACRES.

AN OVERALL REQUIREMENT TO PROVIDE 205 ACRES OF N.A.O.S. THROUGHOUT THE SERENO CANYON PLANNED COMMUNITY PER 1-ZN-2005

LEGEND:

- SITE BOUNDARY
- UNDISTURBED N.A.O.S. AREA
- REVEGETATED N.A.O.S. AREA (SCARRED AREA)
- ARCHAEOLOGICAL SURVEY AREA



WOOD / PATEL



SCALE: (+/-)



DATE: 03.15.07
 JOB: 0425.3
 BY: EB
 REV: 5.10.07

SERENO CANYON: COMMUNITY CENTER
 NATURAL AREA OPEN SPACE EXHIBIT

113-DR-2005#2
 5/15/2007



LEGEND

- TW= TOP OF WALL ELEVATION
- BW= BOTTOM OF WALL ELEVATION
- TC= TOP OF CURB ELEVATION
- G= GUTTER ELEVATION
- FG= FINISH GRADE ELEVATION
- > DIRECTION OF FLOW



NOT
FOR
CONSTRUCTION
OR RECORDING

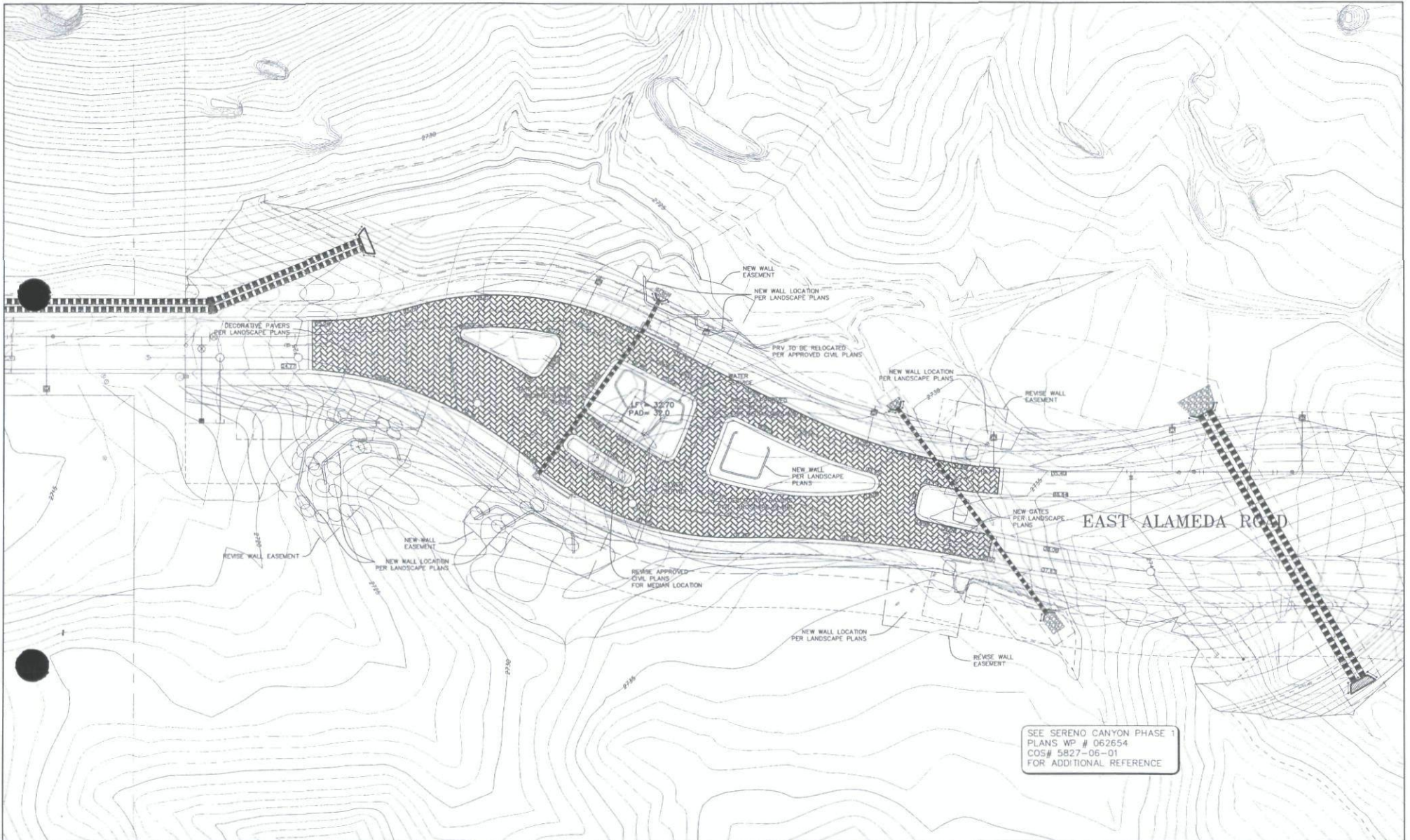


**PRELIMINARY GRADING PLAN FOR COMMUNITY CENTER
SERENO CANYON PHASE 1
SCOTTSDALE, ARIZONA**

WOOD/PATEL
LAND DEVELOPMENT • WATER RESOURCES
TRAFFIC ENGINEERING • PLANNING
WATER SUPPLY • SEWERAGE
CONSTRUCTION MANAGEMENT
2001 W. Northern Ave.
Phoenix, AZ 85021
(602) 235-8000
www.woodpatel.com
REGISTERED PROFESSIONAL ENGINEER

N:\2006\062654\Draw\Exhibits\ 2654-RETREAT-SITE-CPH.dwg - Apr 12, 2007

113-DR-2005#2
5/15/2007



SEE SERENO CANYON PHASE 1
 PLANS WP # 062654
 COS# 5827-05-01
 FOR ADDITIONAL REFERENCE

20 0 10 20
 Horiz. 1 in. = 20 ft.

NOT FOR CONSTRUCTION OR RECORDING

PRELIMINARY SITE PLAN FOR GATE HOUSE
 SERENO CANYON PHASE 1
 SCOTTSDALE, ARIZONA

WOOD/PATEL
 LAND DEVELOPMENT • WATER RESOURCES
 PLANNING/DESIGN/PERMITS
 WATER INFRASTRUCTURE • SEWERAGE
 CONSTRUCTION MANAGEMENT
 2001 W. Northway Ave.
 Phoenix, AZ 85021
 (602) 335-8500
 www.woodpatel.com
 PROJECT: 1985A - 1003001 - 00000004

N:\2006\062654\dwg\lsh\lsh\GAURO_GATE\2654-GUARD-GATE-EXH.dwg - Apr 12, 2007

113-DR-2005#2
 5/15/2007



UNDEVELOPED
BY OTHERS

UNDEVELOPED
STATE LAND

UNDEVELOPED
BY OTHERS

SONORAN
CREST



SERENO CANYON
PRELIMINARY PLAT
TOPOGRAPHY MAP

PRELIMINARY
NOT
FOR
CONSTRUCTION
OR RECORDING

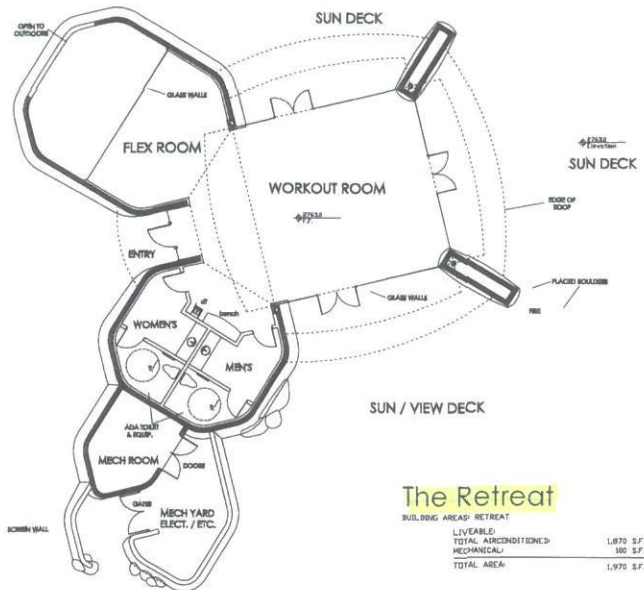


WOOD/PATEL

LAND SURVEYORS • SURVEYING ENGINEERS
REGISTERED PROFESSIONALS
WOOD/PATEL • ARCHITECTS
CONSTRUCTION MANAGEMENT
2001 W. Northside Ave.
Phoenix, AZ 85021
(602) 235-8100
www.woodpatel.com

ENGINEER G. WARD
DESIGNER K. LOPEZ
CAD TECHNICIAN P. SWANBERG
SCALE (HORIZ) 1" = 200'
SCALE (VERT) 1" = 40'
DATE 12/13/05
JOB NUMBER 042004
SHEET 10 OF 32

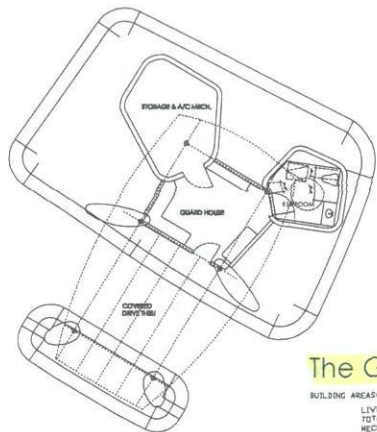
113-DR-2005#2
5/15/2007



The Retreat

BUILDING AREAS: RETREAT

LIVABLE	1,670 S.F.
TOTAL AIR-CONDITIONED	180 S.F.
MECHANICAL	
TOTAL AREA	1,970 S.F.



The Guardhouse

BUILDING AREAS: GUARDHOUSE

LIVABLE	455 S.F.
TOTAL AIR-CONDITIONED	64 S.F.
MECHANICAL	
TOTAL AREA	519 S.F.

Floor Plan Worksheet

1/8" = 1-0

Craig Wickersham Inc. Architects
 15821 N. 79th Street
 Suite 2
 Scottsdale, AZ 85260
 480-609-6166

DISCLAIMER:
 REVISIONS:

NO.	DATE	DESCRIPTION
1		
2		
3		
4		
5		
6		
7		
8		
9		
10		

© 2007 Craig Wickersham Inc.

SERENO CANYON
 DRB SUBMITTAL
 Scottsdale, Az

PRELIMINARY
 NOT FOR
 CONSTRUCTION

JOB NO.	0702	DATE	05/15/07
SCALE	AS SHOWN	DESIGNER	WCW
CHECKED	WCW	PLANNING	WCW



113-DR-2005#2
5/15/2007

SERENO  CANYON

The Retreat
Crown Community Development

Partial Site Illustrative


Craig Wickersham Inc.
Architects
15821 N. 79th Street, #2
Scottsdale, AZ 85260
(480) 609-6766