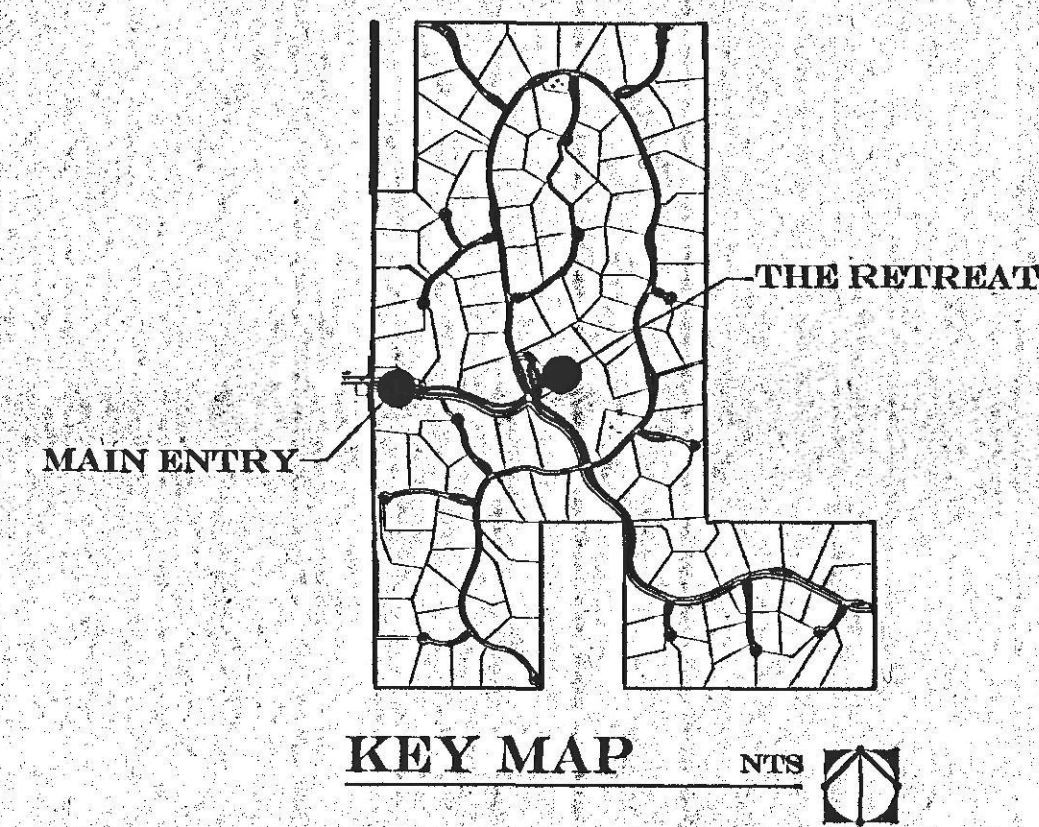


LANDSCAPE LEGEND

- Existing Tree / Veg. to remain
- New Understory Vegetation (shrubs / cacti / grasses / etc.)
- New Boulders (Large specimen type to blend with existing)
- Existing Boulders
- New Landscape / Enhanced Veg.



The following plant palette has been adopted from the City of Scottsdale's E.S.L.O. plant list. (All species shown below are in conformance with E.S.L.O. standards)

- TREES**
- Whitehorn Acacia
 - Catclaw Acacia
 - Crucifixion Thorn
 - Hackberry
 - Blue Palo Verde
 - Foothill Palo Verde
 - Desert Willow
 - One-seeded Juniper
 - Ironwood
 - Cottonwood
 - Arizona Mesquite
 - Scrub Oak
 - Sugar Shinarump
 - Arizona Rosewood

- SUCCULENTS / CACTI**
- Saguaro
 - Hedgehog Cactus
 - Compass Barrel
 - Barrel
 - Fishhook Barrel
 - Ocotillo
 - Fishhook Cactus
 - Cactus
 - Staghorn Cholla
 - Cholla
 - Teddy Bear Cholla
 - Engelmann's Prickly-pear
 - Chainfruit Cholla
 - Desert Christmas Cholla
 - Night-Blooming Cereus
 - Banana Yucca
 - Soaptree Yucca

- SHRUBS / BUSHES**
- Giant Bursage
 - Triangle-leaf Bursage
 - White Bursage
 - Desert Honeysuckle
 - Fourwing Saltbush
 - Quailbrush
 - Desert Saltbush
 - Red Barberry
 - Fairy Duster
 - Desert Senna
 - Desert Hackberry
 - Hopbush
 - Sacred Datura
 - Brittlebush
 - Green Brittlebush
 - Mormon Tea
 - Turpentine Bush
 - Flat-top Buckwheat
 - Snakeweed
 - Desert Lavender
 - Chuparosa
 - Creosote Bush
 - Deer Vetch
 - Wolfberry
 - Arrow Weed
 - Jojoba Bush
 - Trixis
 - Goldeneye
 - Greythorn

- ANNUALS / PERENNIALS / VINES**
- Sand Verbena
 - Fiddleneck
 - Desert Marigold
 - Coyote Gourd
 - Desert Hyacinth
 - Dogweed
 - Woolly Daisy
 - Mexican Gold Poppy
 - Gaillardia
 - Starflower
 - Slender Janusia Vine
 - Goldfields
 - Bladderpod Mustard
 - Desert Lupine
 - Purple Aster
 - Blackfoot Daisy
 - Owl's Clover
 - Parry's Penstemon
 - Arizona Penstemon
 - Desert Bluebell
 - Scorpionweed
 - Cream Cups
 - Devil's Claw
 - Paper Flower
 - Indian Wheat
 - Desert Chicory
 - Desert Chia
 - Desert Globemallow
 - Desert Straw

- GRASSES**
- Purple threeawn
 - Needle grama
 - Sideoats grama
 - Curly mesquite
 - Fluffgrass

The following plant palette is in addition to the above referenced list. The following species will be used in and around the developments clubhouse and connected common areas. (These areas will not be counted as revegetated NAOS)

- TREES**
- Casahuate
 - Desert Willow
 - Gregg Ash
 - Texas Ebony

- SUCCULENTS / CACTI**
- Desert Milkweed
 - Agave
 - Golden Barrel
 - Giant Hesperaloe
 - Sepita
 - Organ Pipe Cactus

- SHRUBS / BUSHES**
- Black Dalea
 - Sage
 - Baja Ruellia
 - Desert Ruellia
 - Autumn Sage

- ANNUALS / PERENNIALS / VINES**
- Potted annual flowers
 - Angelita Daisy
 - Yellow morning glory

This list is intended as a guide and is subject to change. Any changes shall be approved by City staff as required.



SERENO CANYON

MAIN ENTRY

SHEET 1 OF 2

Date: 4.18.07
Job No: 0425
Drawn by: JMY

GUARDHOUSE
LANDSCAPE: 5/07

D

A

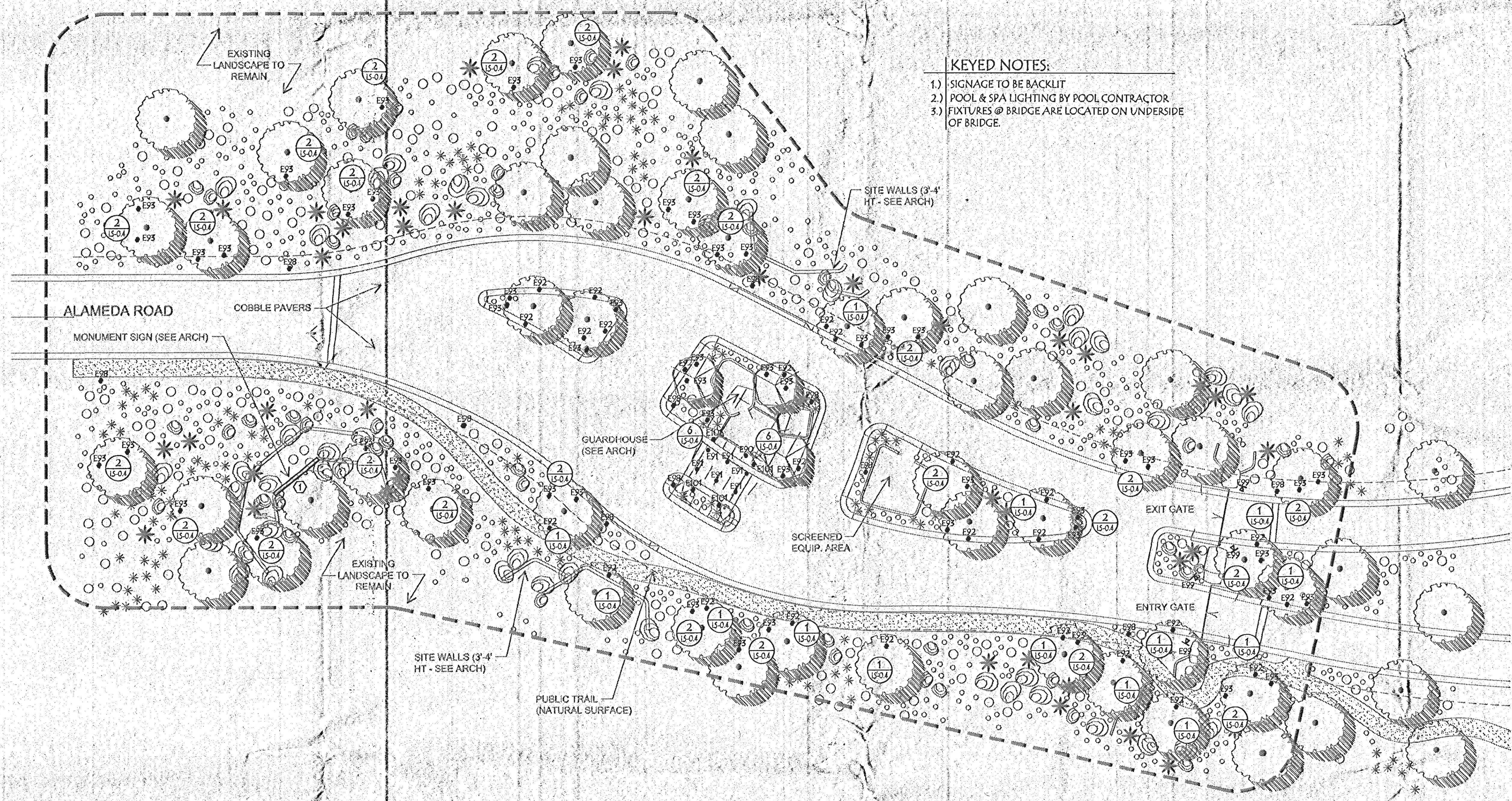
P

H

D

V

I



- KEYED NOTES:**
- 1.) SIGNAGE TO BE BACKLIT
 - 2.) POOL & SPA LIGHTING BY POOL CONTRACTOR
 - 3.) FIXTURES @ BRIDGE ARE LOCATED ON UNDERSIDE OF BRIDGE

ADAPTIVE DESIGN GROUP INC.
 LIGHTING • ELECTRICAL • FOUNDATION • AUTOMATION

Principals
 Glenn Johnson LC, IALD
 Kris Wilde LC, IALD
 Chad Morris PE

4525 South Wasatch Blvd. #300
 Salt Lake City, Utah 84124
 801-274-9600 (Office)
 801-274-9602 (Fax)

Emails: glenn.johnson@adaptivedg.com
 kris.wilde@adaptivedg.com
 chad.morris@adaptivedg.com
 Website: www.adaptivedg.com

CONTRACTED SCOPE OF SERVICE:

- ARCHITECT**
- A □ LIGHTING DESIGN & SPECIFICATIONS
 - B □ LIGHTING CONTROL DESIGN
 - C □ CONTROL PROCESSOR PROGRAMMING
 - D □ FULL ELECTRICAL ENGINEERING
 - E □ CONSTRUCTION MANAGEMENT
 - F □ FINAL AIM, TUNING, & SCENE SETTING
 - G □ LANDSCAPE LIGHTING DESIGN
 - H □ MOTORIZED BLIND/SHADE DESIGN
 - I □ TELEPHONE SYSTEM DESIGN
 - J □ HOME NETWORK DESIGN
 - K □ DISTRIBUTED AUDIO-VIDEO DESIGN
 - L □ SECURITY SYSTEM COORDINATION
 - M □ SYSTEM INTEGRATION DESIGN

ARCHITECT
 INTERIOR DESIGNER
 BUILDER

SERENO CANYON

PRINCIPAL SIGNATURE

© Copyright Protected
 ADAPTIVE DESIGN GROUP INC.
 2007

REVISIONS	

DATE: 4-27-07 SCALE: 1"=20'-0"
 JOB NUMBER: 20070424 DRAWN BY: SD/JK/JY

MAIN ENTRY LIGHTING PLAN

LS-9.0