

**LANDSCAPE LEGEND**

- Existing Tree / Veg. to remain
- New Understory Vegetation (shrubs / cacti / grasses / etc.)
- New Landscape / Enhanced Veg.
- New Boulders (Large specimen type to blend with existing)
- Existing Boulders

The following plant palette has been adopted from the City of Scottsdale's E.S.L.O. plant list. (All species shown below are in conformance with E.S.L.O. standards)

**TREES**

- |                     |                                |
|---------------------|--------------------------------|
| Whitethorn Acacia   | <i>Acacia constricta</i>       |
| Catclaw Acacia      | <i>Acacia greggii</i>          |
| Crucifixion Thorn   | <i>Canotia holocantha</i>      |
| Hackberry           | <i>Celtis pallida</i>          |
| Blue Palo Verde     | <i>Cercidium floridum</i>      |
| Foothill Palo Verde | <i>Cercidium microphyllum</i>  |
| Desert Willow       | <i>Chilopsis linearis</i>      |
| One-seeded Juniper  | <i>Juniperus monosperma</i>    |
| Ironwood            | <i>Olneya tesota</i>           |
| Cottonwood          | <i>Populus fremontii</i>       |
| Arizona Mesquite    | <i>Prosopis velutina</i>       |
| Scrub Oak           | <i>Quercus turbinella</i>      |
| Sugar Sumac         | <i>Rhus ovata</i>              |
| Arizona Rosewood    | <i>Vauquelinea californica</i> |

**SUCCULENTS / CACTI**

- |                          |                                     |
|--------------------------|-------------------------------------|
| Saguaro                  | <i>Carnegiea gigantea</i>           |
| Hedgehog Cactus          | <i>Echinocereus engelmannii</i>     |
| Compass Barrel           | <i>Ferocactus cylindraceus</i>      |
| Barrel                   |                                     |
| Fishhook Barrel          | <i>Ferocactus wislizenii</i> Barrel |
| Ocotillo                 | <i>Fouquieria splendens</i>         |
| Fishhook Cactus          | <i>Mammillaria microcarpa</i>       |
| Cactus                   |                                     |
| Staghorn Cholla          | <i>Opuntia acanthocarpa</i>         |
| Cholla                   |                                     |
| Teddy Bear Cholla        | <i>Opuntia bigelovii</i> Cholla     |
| Engelmann's Prickly-pear | <i>Opuntia engelmannii</i>          |
| Chainfruit Cholla        | <i>Opuntia fulgida</i>              |
| Desert Christmas Cholla  | <i>Opuntia leptocaulis</i>          |
| Night-blooming Cereus    | <i>Pentaceros greggii</i>           |
| Banana Yucca             | <i>Yucca baccata</i>                |
| Soaptree Yucca           | <i>Yucca elata</i>                  |

**SHRUBS / BUSHES**

- |                       |                                |
|-----------------------|--------------------------------|
| Giant Bursage         | <i>Ambrosia ambrosioides</i>   |
| Triangle-leaf Bursage | <i>Ambrosia deltoidea</i>      |
| White Bursage         | <i>Ambrosia dumosa</i>         |
| Desert Honeysuckle    | <i>Anisacanthus thurberi</i>   |
| Fourwing Saltbush     | <i>Atriplex canescens</i>      |
| Quailbush             | <i>Atriplex lentiformis</i>    |
| Desert Saltbush       | <i>Atriplex polycarpa</i>      |
| Red Barberry          | <i>Berberis haematocarpa</i>   |
| Fairy Duster          | <i>Calliandra eriophylla</i>   |
| Desert Senna          | <i>Cassia covesii</i>          |
| Desert Hackberry      | <i>Celtis pallida</i>          |
| Hopbush               | <i>Dodonaea viscosa</i>        |
| Sacred Datura         | <i>Datura wrightii</i>         |
| Brittlebush           | <i>Encelia farinosa</i>        |
| Green Brittlebush     | <i>Encelia frutescens</i>      |
| Mormon Tea            | <i>Ephedra aspera</i>          |
| Turpentine Bush       | <i>Eriocameria laticifolia</i> |
| Flat-top Buckwheat    | <i>Eriogonum fasciculatum</i>  |
| Snakeweed             | <i>Gutierrezia sarothrae</i>   |
| Desert Lavender       | <i>Hyptis emoryi</i>           |
| Chuparosa             | <i>Justicia californica</i>    |
| Creosote Bush         | <i>Larrea tridentata</i>       |
| Deer Vetch            | <i>Lotus rigidus</i>           |
| Wolfberry             | <i>Lycium andersonii</i>       |
| Arrow Weed            | <i>Pluchea sericea</i>         |
| Joboa Bush            | <i>Simmondsia chinensis</i>    |
| Trixis                | <i>Trixis californica</i>      |
| Goldeneye             | <i>Viguiera deltoidea</i>      |
| Greythorn             | <i>Ziziphus obtusifolia</i>    |

**ANNUALS / PERENNIALS / VINES**

- |                      |                                    |
|----------------------|------------------------------------|
| Sand Verbena         | <i>Abronia villosa</i>             |
| Fiddleneck           | <i>Amsinckia intermedia</i>        |
| Desert Marigold      | <i>Baileya multiradiata</i>        |
| Coyote Gourd         | <i>Cucurbita digitata</i>          |
| Desert Hyacinth      | <i>Dichelostemma pulchellum</i>    |
| Dogweed              | <i>Dyssodia pentachaeta</i>        |
| Woolly Daisy         | <i>Eriophyllum lanosum</i>         |
| Mexican Gold Poppy   | <i>Eschscholzia mexicana</i>       |
| Gaillardia           | <i>Gaillardia aristata</i>         |
| Starflower           | <i>Gilia latifolia</i>             |
| Slender Janusia Vine | <i>Janusia gracilis</i>            |
| Goldfields           | <i>Lasthenia chrysostoma</i>       |
| Bladderpod Mustard   | <i>Lesquerella gordonii</i>        |
| Desert Lupine        | <i>Lupinus sparsiflorus</i>        |
| Purple Aster         | <i>Machaeranthera asteroides</i>   |
| Blackfoot Daisy      | <i>Melampodium leucanthum</i>      |
| Owl's Clover         | <i>Orthocarpus purpurascens</i>    |
| Parry's Penstemon    | <i>Penstemon parryi</i>            |
| Arizona Penstemon    | <i>Penstemon pseudospectabilis</i> |
| Desert Bluebell      | <i>Phacelia campanularia</i>       |
| Scorpionweed         | <i>Phacelia crenulata</i>          |
| Cream Cups           | <i>Platystemon californicus</i>    |
| Devil's Claw         | <i>Prosopidea parviflora</i>       |
| Paper Flower         | <i>Psilostrophe cooperi</i>        |
| Indian Wheat         | <i>Plantago purshii</i>            |
| Desert Chioray       | <i>Rafinesquia neomexicana</i>     |
| Desert Chia          | <i>Salvia columbaria</i>           |
| Desert Globemallow   | <i>Sphaeralcea ambigua</i>         |
| Desert Straw         | <i>Stephanomeria pauciflora</i>    |

**GRASSES**

- |                 |                               |
|-----------------|-------------------------------|
| Purple threeawn | <i>Aristida purpurea</i>      |
| Needle grama    | <i>Bouteloua aristidoides</i> |
| Sideoats grama  | <i>Bouteloua curtipendula</i> |
| Curly mesquite  | <i>Hilaria berlandieri</i>    |
| Fluffgrass      | <i>Eriogonum pulchellum</i>   |

The following plant palette is in addition to the above referenced list. The following species will be used in and around the developments clubhouse and connected common areas. (These areas will not be counted as revegetated NAOs)

**TREES**

- |               |                                  |
|---------------|----------------------------------|
| Cascalote     | <i>Caesalpinia cacalaco</i>      |
| Desert Willow | <i>Chilopsis linearis</i>        |
| Gregg Ash     | <i>Fraxinus greggii</i>          |
| Texas Ebony   | <i>Pithecellobium flexicaule</i> |

**SUCCULENTS / CACTI**

- |                   |                              |
|-------------------|------------------------------|
| Desert Milkweed   | <i>Asclepias subulata</i>    |
| Agave             | <i>Agave Species</i>         |
| Golden Barrel     | <i>Echinocactus grusonii</i> |
| Giant Hesperaloe  | <i>Hesperaloe funifera</i>   |
| Senita            | <i>Lophocereus schottii</i>  |
| Organ Pipe Cactus | <i>Stenocereus thurberi</i>  |

**SHRUBS / BUSHES**

- |                |                             |
|----------------|-----------------------------|
| Black Dalea    | <i>Dalea frutescens</i>     |
| Sage           | <i>Leucophyllum species</i> |
| Baja Ruellia   | <i>Ruellia brittoniana</i>  |
| Desert Ruellia | <i>Ruellia pensularis</i>   |
| Autumn Sage    | <i>Salvia greggii</i>       |

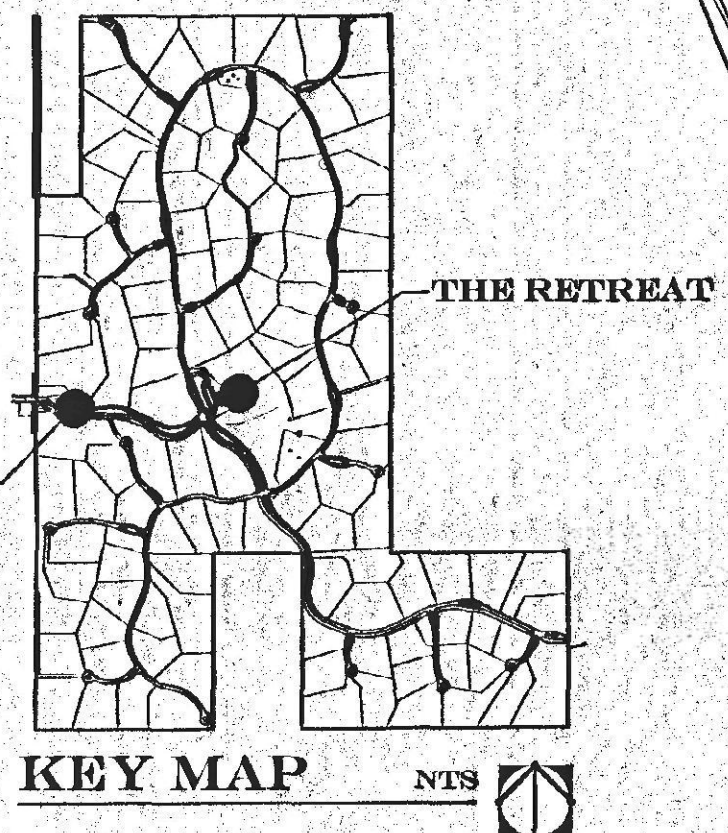
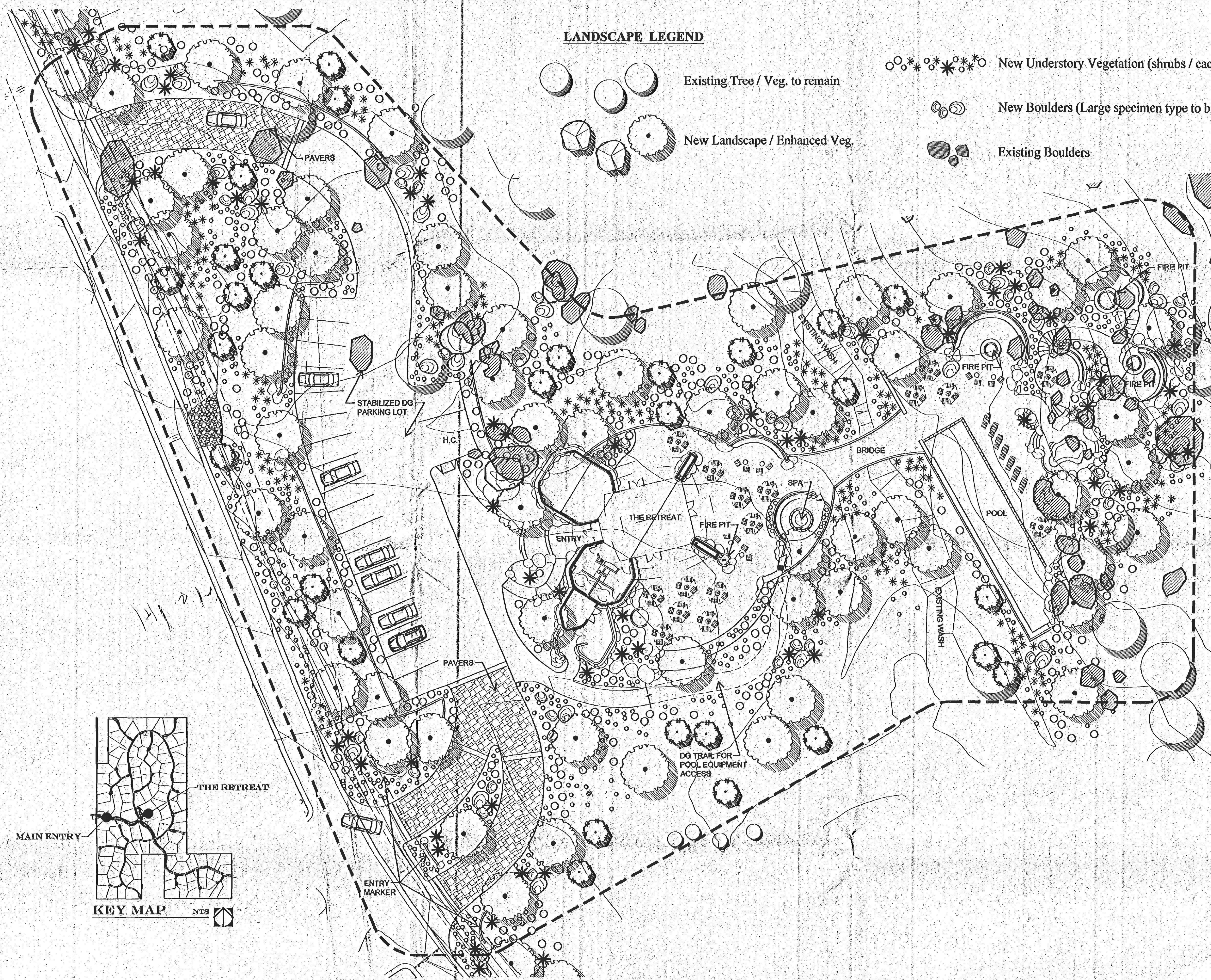
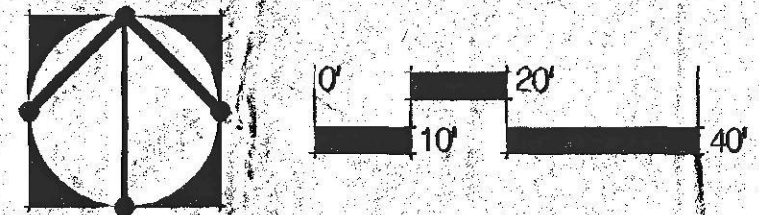
**ANNUALS / PERENNIALS / VINES**

- |                       |                          |
|-----------------------|--------------------------|
| Potted annual flowers | By season                |
| Angelita Daisy        | <i>Hymenoxis acaulis</i> |
| Yellow morning glory  | <i>Merrima aurea</i>     |

**GRASSES**

- |                     |                        |
|---------------------|------------------------|
| Beargrass           | <i>Nolina erumpens</i> |
| Hybrid bermuda lawn | (Tifway 419 or equal)  |
| dactylon            | <i>Cynodon</i>         |

This list is intended as a guide and is subject to change. Any changes shall be approved by City staff as required.



# SERENO CANYON

## THE RETREAT

**LVA**  
Urban Design  
Studio L.L.C.

Master Planned Community,  
Land Planning,  
Site Planning & Design,  
Environmental Analysis &  
Landscape Design

7500 East Main Street  
Scottsdale, Arizona 85251  
Phone (480)944-0204  
Fax (480)944-7232  
www.lva-design.com

Date:  
4.18.07  
Job No:  
0425  
Drawn by:  
JMY

113-DR-2005#2  
5/15/2007

COMB. SITE

SHEET  
2 OF 2

LANDSCAPE 5/07