

The following plant palette has been adopted from the City of Scottsdale's E.S.L.O. plant list. (All species shown below are in conformance with E.S.L.O. standards)

- TREES**
- Whitehorn Acacia
  - Catclaw Acacia
  - Crucifixion Thorn
  - Hackberry
  - Blue Palo Verde
  - Foothill Palo Verde
  - Desert Willow
  - One-seeded Juniper
  - Ironwood
  - Cottonwood
  - Arizona Mesquite
  - Scrub Oak
  - Sugar Sumac
  - Arizona Rosewood

- SUCCULENTS / CACTI**
- Saguaro
  - Hedgehog Cactus
  - Compass Barrel
  - Barrel
  - Fishhook Barrel
  - Ocotillo
  - Fishhook Cactus
  - Cactus
  - Staghorn Cholla
  - Cholla
  - Teddy Bear Cholla
  - Engelmann's Prickly-pear
  - Chainfruit Cholla
  - Desert Christmas Cholla
  - Night-Blooming Cereus
  - Banana Yucca
  - Soaptree Yucca

- SHRUBS / BUSHES**
- Giant Bursage
  - Triangle-leaf Bursage
  - White Bursage
  - Desert Honeysuckle
  - Fourwing Saltbush
  - Quailbrush
  - Desert Saltbush
  - Red Barberry
  - Fairy Duster
  - Desert Senna
  - Desert Hackberry
  - Hopbush
  - Sacred Datura
  - Brittlebush
  - Green Brittlebush
  - Mormon Tea
  - Turpentine Bush
  - Flat-top Buckwheat
  - Snakeweed
  - Desert Lavender
  - Chuparosa
  - Creosote Bush
  - Deer Vetch
  - Wolfberry
  - Arrow Weed
  - Joboa Bush
  - Trixis
  - Goldensye
  - Greythorn

- ANNUALS / PERENNIALS / VINES**
- Sand Verbena
  - Fiddleneck
  - Desert Marigold
  - Coyote Gourd
  - Desert Hyacinth
  - Dogweed
  - Woolly Daisy
  - Goldfields
  - Bladderpod Mustard
  - Desert Lupine
  - Purple Aster
  - Blackfoot Daisy
  - Owl's Clover
  - Pary's Penstemon
  - Arizona Penstemon
  - Desert Bluebell
  - Scorpionweed
  - Cream Cups
  - Devil's Claw
  - Paper Flower
  - Indian Wheat
  - Desert Chicory
  - Desert Chia
  - Desert Globemallow
  - Desert Straw

- GRASSES**
- Purple threeawn
  - Needle grama
  - Sideoats grama
  - Curly mesquite
  - Fluffgrass

The following plant palette is in addition to the above referenced list. The following species will be used in and around the developments clubhouse and connected common areas. (These areas will not be counted as revegetated ANOS)

- TREES**
- Cascalote
  - Desert Willow
  - Gregg Ash
  - Texas Ebony

- SUCCULENTS / CACTI**
- Desert Milkweed
  - Agave
  - Golden Barrel
  - Giant Hesperaloe
  - Senita
  - Organ Pipe Cactus

- SHRUBS / BUSHES**
- Black Dalea
  - Sage
  - Baja Ruellia
  - Desert Ruellia
  - Autumn Sage

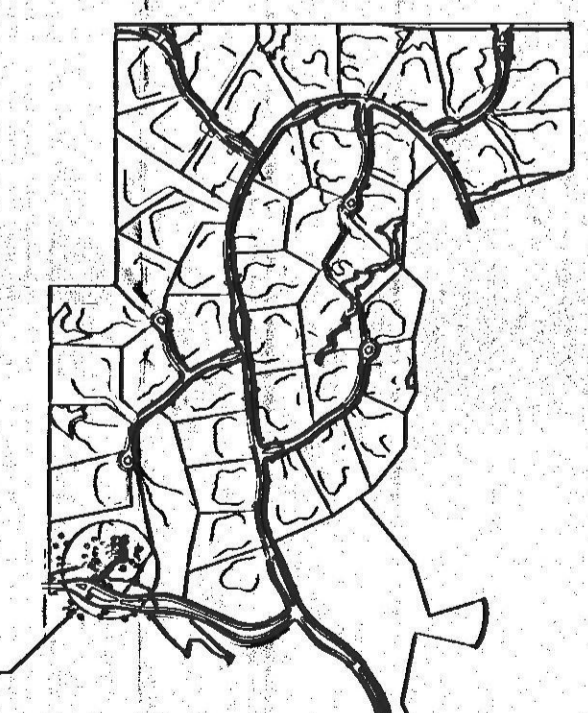
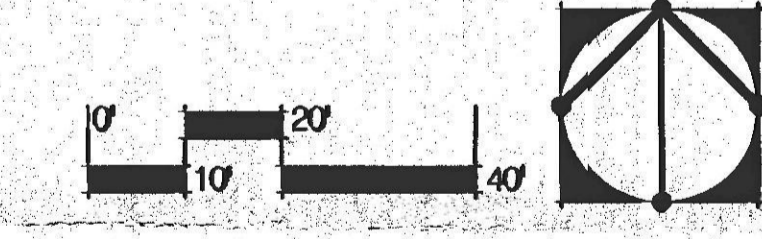
- ANNUALS / PERENNIALS / VINES**
- Potted annual flowers
  - Angellita Daisy
  - Yellow morning glory

- GRASSES**
- Beargrass
  - Hybrid bermuda lawn
  - dactylon

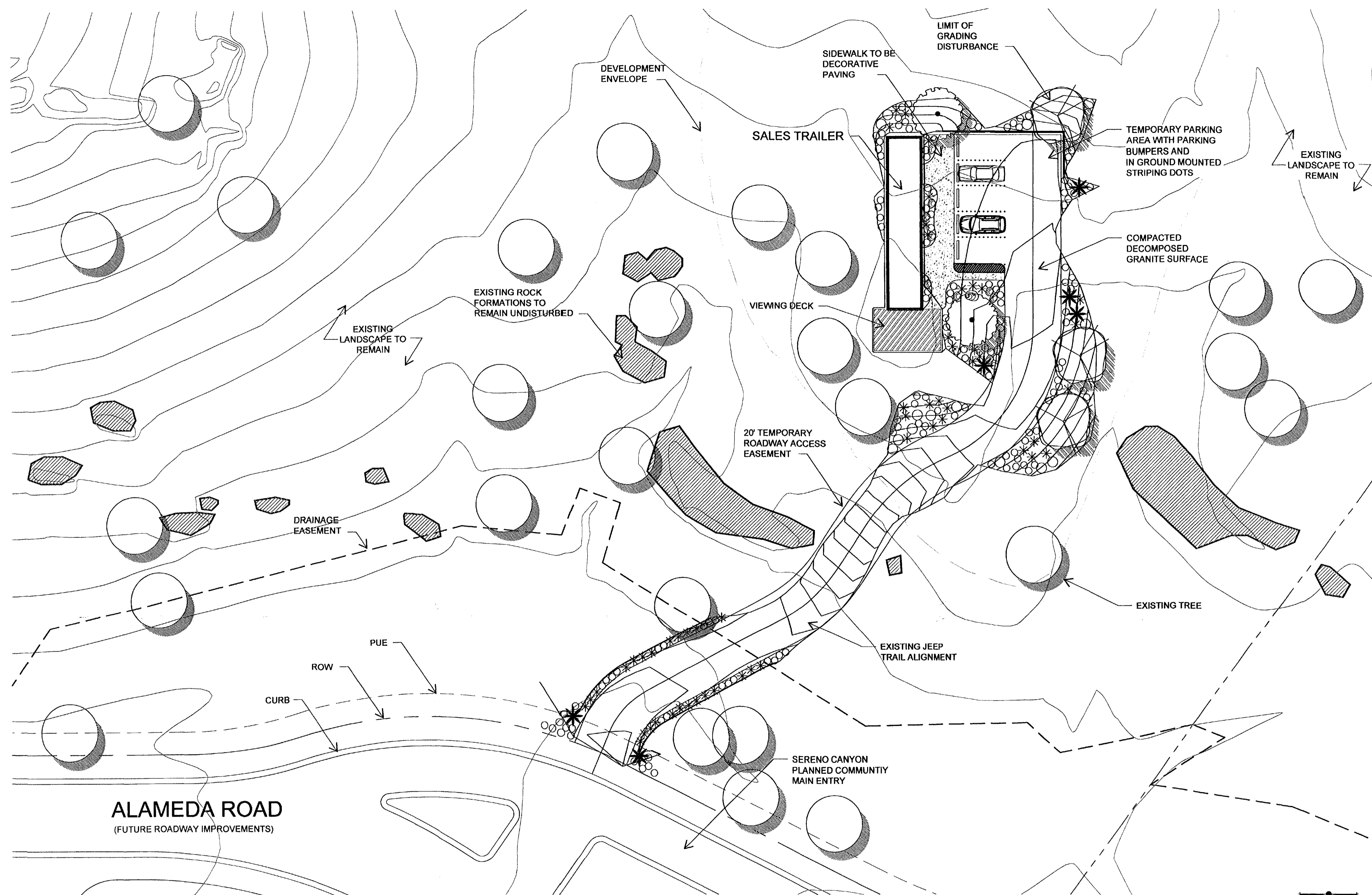
This list is intended as a guide and is subject to change. Any changes shall be approved by City staff as required.

**LANDSCAPE LEGEND**

- Existing Tree / Veg. to remain
- New Understory Vegetation (shrubs / cacti / grasses / etc.)
- New Boulders (Large specimen type to blend with existing)
- Existing Boulders
- New Landscape / Enhanced Veg.







The following plant palette has been adopted from the City of Scottsdale's E.S.L.O. plant list. (All species shown below are in conformance with E.S.L.O. standards)

- TREES**
- Whitethorn Acacia
  - Catclaw Acacia
  - Crucifixion Thorn
  - Hackberry
  - Blue Palo Verde
  - Foothill Palo Verde
  - Desert Willow
  - One-seeded Juniper
  - Ironwood
  - Cottonwood
  - Arizona Mesquite
  - Scrub Oak
  - Sugar Sumac
  - Arizona Rosewood

- SUCCULENTS / CACTI**
- Saguaro
  - Hedgehog Cactus
  - Compass Barrel
  - Barrel
  - Fishhook Barrel
  - Ocotillo
  - Fishhook Cactus
  - Cactus
  - Staghorn Cholla
  - Cholla
  - Teddy Bear Cholla
  - Engelmann's Prickly-pear
  - Chainfruit Cholla
  - Desert Christmas Cholla
  - Night-Blooming Cereus
  - Banana Yucca
  - Soaptree Yucca

- SHRUBS / BUSHES**
- Giant Bursage
  - Triangle-leaf Bursage
  - White Bursage
  - Desert Honeysuckle
  - Fourwing Saltbush
  - Quailbrush
  - Desert Saltbush
  - Red Barberry
  - Fairy Duster
  - Desert Senna
  - Desert Hackberry
  - Hopbush
  - Sacred Datura
  - Brittlebush
  - Green Brittlebush
  - Mormon Tea
  - Turpentine Bush
  - Flat-top Buckwheat
  - Snakeweed
  - Desert Lavender
  - Chuparosa
  - Creosote Bush
  - Deer Vetch
  - Wolfberry
  - Arrow Weed
  - Jojoba Bush
  - Trixis
  - Goldeneye
  - Greythorn

- ANNUALS / PERENNIALS / VINES**
- Sand Verbena
  - Fiddleneck
  - Desert Marigold
  - Coyote Gourd
  - Desert Hyacinth
  - Dogweed
  - Woolly Daisy
  - Mexican Gold Poppy
  - Gaillardia
  - Starflower
  - Slender Janusia Vine
  - Goldfields
  - Bladderpod Mustard
  - Desert Lupine
  - Purple Aster
  - Blackfoot Daisy
  - Owl's Clover
  - Parry's Penstemon
  - Arizona Penstemon
  - Desert Bluebell
  - Scorpionweed
  - Cream Cups
  - Devil's Claw
  - Paper Flower
  - Indian Wheat
  - Desert Chicory
  - Desert Chia
  - Desert Globemallow
  - Desert Straw

- GRASSES**
- Purple threeawn
  - Needle grama
  - Sidecoats grama
  - Curly mesquite
  - Fluffgrass

The following plant palette is in addition to the above referenced list. The following species will be used in and around the developments clubhouse and connected common areas. (These areas will not be counted as revegetated NAOS)

- TREES**
- Casahuate
  - Desert Willow
  - Gregg Ash
  - Texas Ebony

- SUCCULENTS / CACTI**
- Desert Milkweed
  - Agave
  - Golden Barrel
  - Giant Hesperaloe
  - Senilia
  - Organ Pipe Cactus

- SHRUBS / BUSHES**
- Black Dalea
  - Sage
  - Baja Ruellia
  - Desert Ruellia
  - Autumn Sage

- ANNUALS / PERENNIALS / VINES**
- Potted annual flowers
  - Angelita Daisy
  - Yellow morning glory

- GRASSES**
- Beargrass
  - Hybrid bermuda lawn dactylon

This list is intended as a guide and is subject to change. Any changes shall be approved by City staff as required.

**LANDSCAPE LEGEND**

- Existing Tree / Veg. to remain
- New Understory Vegetation (shrubs / cacti / grasses / etc.)
- New Landscape / Enhanced Veg.
- New Boulders (Large specimen type to blend with existing)
- Existing Boulders

