

KEYNOTES

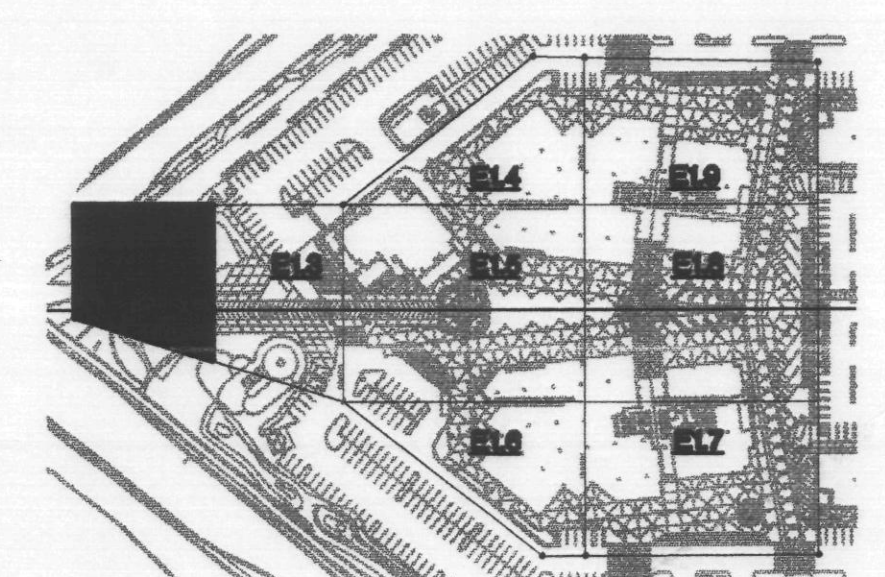
1. PANELS FURNISHED & INSTALLED UNDER ANOTHER CONTRACT.
2. 2#12, 1#12 GND, 3/4" C THRU-OUT ENTIRE CIRCUIT.
3. 2#8, 1#10 GND, 1" C THRU-OUT ENTIRE CIRCUIT.
4. FOR FOUNTAIN EQUIPMENT UNDER SEPARATE CONTRACT, COORDINATE REQUIREMENTS AND EXACT LOCATION WITH FOUNTAIN CONTRACTOR.
5. 4#8, 1#10 GND, 3/4" C.
6. SEE CDL DRAWINGS AND SPECIFICATIONS FOR MOUNTING DETAILS.
7. 2#8 LOW VOLTAGE (KIM KLV432) CABLE.
8. 2 #12 LOW VOLTAGE (KIM KLV427) CABLE.
9. JUNCTION BOX FOR POWER TO ILLUMINATED SIGN BY OTHERS.
10. ACTUAL SELF-ILLUMINATING SIGN TO BE SUBMITTED SEPARATELY.

SHEET NOTES

1. ALL LIGHTING AND POWER CONDUCTORS SHALL BE #10 AWG IN 3/4" CONDUIT MINIMUM, U.N.O.
2. ALL LIGHTING CONTROLS FOR CIRCUITS CONNECTED TO PANEL "SP" ARE LOCATED NEXT TO "SP".

APPROVED
FINAL PLANS
01-12-03
DATE
APPROVED BY
Per Donaghy Recommendation of Approval

KEY MAP



HARDSCAPE PLAN

ARIZONA REVISED STATUTES 32-1129.01.
NOTICE OF EXTENDED CERTIFICATION AND APPROVAL PERIOD PROVISION.
This contract allows the owner to certify and approve billings and estimates within 30 days after the billings and estimates are received from the contractor.
NOTICE OF EXTENDED PAYMENT PROVISION.
This contract allows the owner to make payments within 30 days after certification and approval of billings and estimates.

BVA
Mechanical & Electrical Consulting Engineers
7250 N. 19th St. #102 • Phoenix, AZ 85020 • (602) 371-1333
www.bvaeng.com E-Mail: cad@bvaeng.com
DESIGNED BY: J. YURKUS
DRAWN BY: TPS

THIS DRAWING IS AN INSTRUMENT OF SERVICE AND THE PROPERTY OF BATES/VALENTINO ASSOCIATES LTD. THIS DRAWING MAY NOT BE REPRODUCED OR REPRODUCED WITHOUT WRITTEN PERMISSION.
© COPYRIGHT 2002 BATES/VALENTINO ASSOCIATES LTD.
7250 NORTH 19TH STREET, SUITE 102 PHOENIX, ARIZONA 85020
800-371-1333 FAX 602-371-1675
bvaeng.com www.bvaeng.com

architecture planning
727 E. MARYLAND AVE
Phoenix, AZ 85014
phone: 602.266.6202
facsimile: 602.265.6212
THIS DRAWING IS AN INSTRUMENT OF SERVICE. IT IS THE PROPERTY OF ELBERMANN & SCHICK, INC. AND MAY NOT BE REPRODUCED WITHOUT WRITTEN PERMISSION.

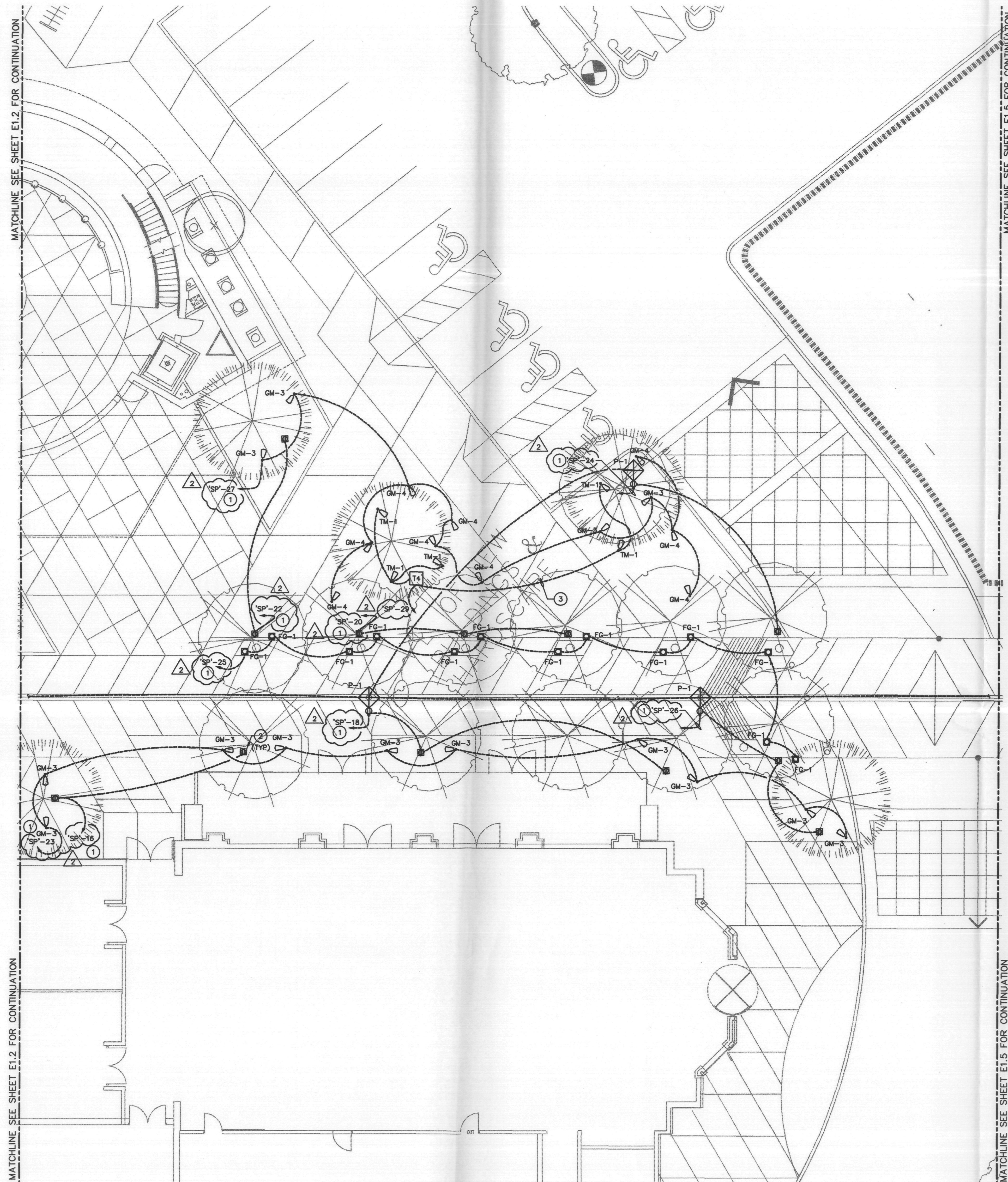
THE PROMENADE - PHASE 2A
SITE DEVELOPMENT
AT
S.E.C. OF FRANK LLOYD WRIGHT & SCOTTSDALE ROAD
FOR
THE PEDERSON GROUP

8176
RIVER L
BALTES
ARIZONA, USA

| | |
|-----------|---------------|
| 08 MAY 03 | CITY COMMENTS |
| 09 MAY 03 | COORDINATION |
| 10 MAY 03 | |
| 11 MAY 03 | |
| 12 MAY 03 | |
| 13 MAY 03 | |
| 14 MAY 03 | |
| 15 MAY 03 | |
| 16 MAY 03 | |
| 17 MAY 03 | |
| 18 MAY 03 | |
| 19 MAY 03 | |
| 20 MAY 03 | |
| 21 MAY 03 | |
| 22 MAY 03 | |
| 23 MAY 03 | |
| 24 MAY 03 | |
| 25 MAY 03 | |
| 26 MAY 03 | |
| 27 MAY 03 | |
| 28 MAY 03 | |
| 29 MAY 03 | |
| 30 MAY 03 | |
| 31 MAY 03 | |
| 01 JUN 03 | |
| 02 JUN 03 | |
| 03 JUN 03 | |
| 04 JUN 03 | |
| 05 JUN 03 | |
| 06 JUN 03 | |
| 07 JUN 03 | |
| 08 JUN 03 | |
| 09 JUN 03 | |
| 10 JUN 03 | |
| 11 JUN 03 | |
| 12 JUN 03 | |
| 13 JUN 03 | |
| 14 JUN 03 | |
| 15 JUN 03 | |
| 16 JUN 03 | |
| 17 JUN 03 | |
| 18 JUN 03 | |
| 19 JUN 03 | |
| 20 JUN 03 | |
| 21 JUN 03 | |
| 22 JUN 03 | |
| 23 JUN 03 | |
| 24 JUN 03 | |
| 25 JUN 03 | |
| 26 JUN 03 | |
| 27 JUN 03 | |
| 28 JUN 03 | |
| 29 JUN 03 | |
| 30 JUN 03 | |
| 01 JUL 03 | |
| 02 JUL 03 | |
| 03 JUL 03 | |
| 04 JUL 03 | |
| 05 JUL 03 | |
| 06 JUL 03 | |
| 07 JUL 03 | |
| 08 JUL 03 | |
| 09 JUL 03 | |
| 10 JUL 03 | |
| 11 JUL 03 | |
| 12 JUL 03 | |
| 13 JUL 03 | |
| 14 JUL 03 | |
| 15 JUL 03 | |
| 16 JUL 03 | |
| 17 JUL 03 | |
| 18 JUL 03 | |
| 19 JUL 03 | |
| 20 JUL 03 | |
| 21 JUL 03 | |
| 22 JUL 03 | |
| 23 JUL 03 | |
| 24 JUL 03 | |
| 25 JUL 03 | |
| 26 JUL 03 | |
| 27 JUL 03 | |
| 28 JUL 03 | |
| 29 JUL 03 | |
| 30 JUL 03 | |
| 31 JUL 03 | |
| 01 AUG 03 | |
| 02 AUG 03 | |
| 03 AUG 03 | |
| 04 AUG 03 | |
| 05 AUG 03 | |
| 06 AUG 03 | |
| 07 AUG 03 | |
| 08 AUG 03 | |
| 09 AUG 03 | |
| 10 AUG 03 | |
| 11 AUG 03 | |
| 12 AUG 03 | |
| 13 AUG 03 | |
| 14 AUG 03 | |
| 15 AUG 03 | |
| 16 AUG 03 | |
| 17 AUG 03 | |
| 18 AUG 03 | |
| 19 AUG 03 | |
| 20 AUG 03 | |
| 21 AUG 03 | |
| 22 AUG 03 | |
| 23 AUG 03 | |
| 24 AUG 03 | |
| 25 AUG 03 | |
| 26 AUG 03 | |
| 27 AUG 03 | |
| 28 AUG 03 | |
| 29 AUG 03 | |
| 30 AUG 03 | |
| 31 AUG 03 | |
| 01 SEP 03 | |
| 02 SEP 03 | |
| 03 SEP 03 | |
| 04 SEP 03 | |
| 05 SEP 03 | |
| 06 SEP 03 | |
| 07 SEP 03 | |
| 08 SEP 03 | |
| 09 SEP 03 | |
| 10 SEP 03 | |
| 11 SEP 03 | |
| 12 SEP 03 | |
| 13 SEP 03 | |
| 14 SEP 03 | |
| 15 SEP 03 | |
| 16 SEP 03 | |
| 17 SEP 03 | |
| 18 SEP 03 | |
| 19 SEP 03 | |
| 20 SEP 03 | |
| 21 SEP 03 | |
| 22 SEP 03 | |
| 23 SEP 03 | |
| 24 SEP 03 | |
| 25 SEP 03 | |
| 26 SEP 03 | |
| 27 SEP 03 | |
| 28 SEP 03 | |
| 29 SEP 03 | |
| 30 SEP 03 | |
| 01 OCT 03 | |
| 02 OCT 03 | |
| 03 OCT 03 | |
| 04 OCT 03 | |
| 05 OCT 03 | |
| 06 OCT 03 | |
| 07 OCT 03 | |
| 08 OCT 03 | |
| 09 OCT 03 | |
| 10 OCT 03 | |
| 11 OCT 03 | |
| 12 OCT 03 | |
| 13 OCT 03 | |
| 14 OCT 03 | |
| 15 OCT 03 | |
| 16 OCT 03 | |
| 17 OCT 03 | |
| 18 OCT 03 | |
| 19 OCT 03 | |
| 20 OCT 03 | |
| 21 OCT 03 | |
| 22 OCT 03 | |
| 23 OCT 03 | |
| 24 OCT 03 | |
| 25 OCT 03 | |
| 26 OCT 03 | |
| 27 OCT 03 | |
| 28 OCT 03 | |
| 29 OCT 03 | |
| 30 OCT 03 | |
| 31 OCT 03 | |
| 01 NOV 03 | |
| 02 NOV 03 | |
| 03 NOV 03 | |
| 04 NOV 03 | |
| 05 NOV 03 | |
| 06 NOV 03 | |
| 07 NOV 03 | |
| 08 NOV 03 | |
| 09 NOV 03 | |
| 10 NOV 03 | |
| 11 NOV 03 | |
| 12 NOV 03 | |
| 13 NOV 03 | |
| 14 NOV 03 | |
| 15 NOV 03 | |
| 16 NOV 03 | |
| 17 NOV 03 | |
| 18 NOV 03 | |
| 19 NOV 03 | |
| 20 NOV 03 | |
| 21 NOV 03 | |
| 22 NOV 03 | |
| 23 NOV 03 | |
| 24 NOV 03 | |
| 25 NOV 03 | |
| 26 NOV 03 | |
| 27 NOV 03 | |
| 28 NOV 03 | |
| 29 NOV 03 | |
| 30 NOV 03 | |
| 01 DEC 03 | |
| 02 DEC 03 | |
| 03 DEC 03 | |
| 04 DEC 03 | |
| 05 DEC 03 | |
| 06 DEC 03 | |
| 07 DEC 03 | |
| 08 DEC 03 | |
| 09 DEC 03 | |
| 10 DEC 03 | |
| 11 DEC 03 | |
| 12 DEC 03 | |
| 13 DEC 03 | |
| 14 DEC 03 | |
| 15 DEC 03 | |
| 16 DEC 03 | |
| 17 DEC 03 | |
| 18 DEC 03 | |
| 19 DEC 03 | |
| 20 DEC 03 | |
| 21 DEC 03 | |
| 22 DEC 03 | |
| 23 DEC 03 | |
| 24 DEC 03 | |
| 25 DEC 03 | |
| 26 DEC 03 | |
| 27 DEC 03 | |
| 28 DEC 03 | |
| 29 DEC 03 | |
| 30 DEC 03 | |
| 31 DEC 03 | |

SCHEMATIC
DESIGN DEVELOPMENT
CONSTRUCTION DOCUMENTS
BID/PRICING PACKAGE
BUILDING DEPT. APPROVAL

DATE ISSUED 01.31.03
DRAWN BY TPS
CHECKED BY J. YURKUS
PROJECT NO. 22000
CADD FILE
SCALE: 1/8"=1'-0"
DRAWING NO.
E1.2
HARDSCAPE ELECTRICAL



KEYNOTES

- 2#8, 1#10 GND, 1" CONDUIT THROUGHOUT ENTIRE CIRCUIT.
- SEE CDL DRAWINGS AND SPECIFICATIONS FOR MOUNTING DETAILS.
- 2#8 LOW VOLTAGE (KIM KLV432) CABLE.

SHEET NOTES

- ALL LIGHTING CONTROLS FOR CIRCUITS CONNECTED TO PANEL "SP" ARE LOCATED NEXT TO PANEL IN SPIRE. SEE DRAWING E1.2
- ALL LIGHTING AND POWER CONDUCTORS SHALL BE #10 AWG IN 3/4" CONDUIT MINIMUM, U.N.O.

APPROVED
FINAL PLANS PLANNING
DATE: 01/20/03
Robert T. Baltes
APPROVAL

KEY MAP

HARDSCAPE PLAN

DATE ISSUED: 01.31.03
DRAWN BY: TPS
CHECKED BY: J. YURKUS
PROJECT NO.: 22000
CADD FILE:
SCALE: 1/8"=1'-0"
DRAWING NO.: **E1.3**
HARDSCAPE ELECTRICAL

architecture planning

727 E. MARYLAND AVE
Phoenix, AZ 85014
phone: 602.266.6202
facsimile: 602.265.6212

THIS DRAWING IS AN INSTRUMENT OF SERVICE. IT IS THE PROPERTY OF SCHICK, INC. AND MAY NOT BE REPRODUCED WITHOUT WRITTEN PERMISSION.

THE PROMENADE - PHASE 2A
SITE DEVELOPMENT
S.E.C. OF FRANK LLOYD WRIGHT & SCOTTSDALE ROAD
SCOTTSDALE, ARIZONA
FOR **THE PEDERSON GROUP**

APPROVED
01/20/03
Robert T. Baltes
APPROVAL

08 MAY 03 CITY COMMENTS
09 MAY 03 COORDINATION

SCHEMATIC
DESIGN DEVELOPMENT
CONSTRUCTION DOCUMENTS
BID PRICING PACKAGE
BUILDING DEPT. APPROVAL

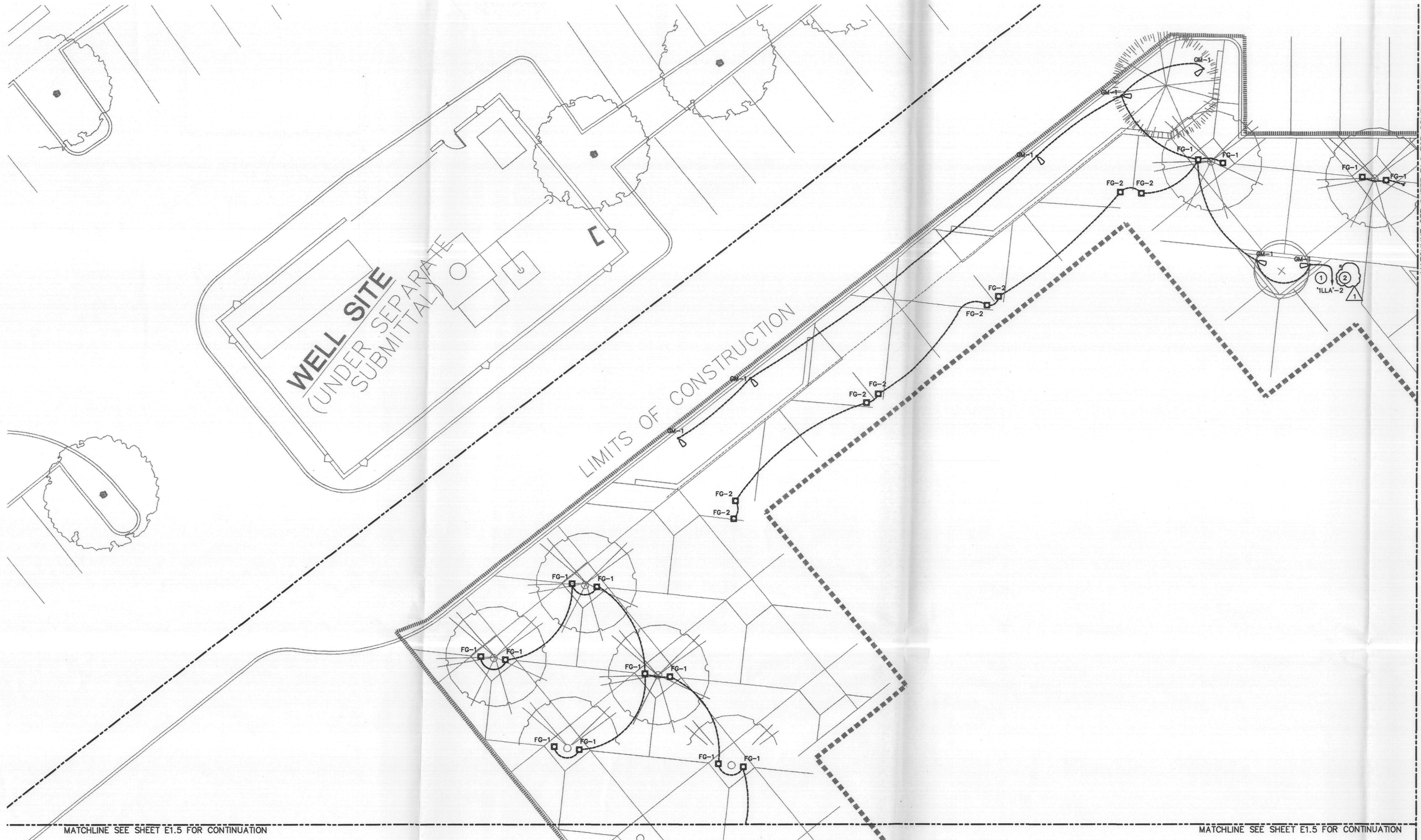
DATE ISSUED: 01.31.03
DRAWN BY: TPS
CHECKED BY: J. YURKUS
PROJECT NO.: 22000
CADD FILE:
SCALE: 1/8"=1'-0"
DRAWING NO.: **E1.3**
HARDSCAPE ELECTRICAL

ARIZONA REVISED STATUTES 32-1129.01.
NOTICE OF EXTENDED CERTIFICATION AND APPROVAL PERIOD PROVISION.
This contract allows the owner to certify and approve billings and estimates within 30 days after the billings and estimates are received from the contractor.
NOTICE OF EXTENDED PAYMENT PROVISION.
This contract allows the owner to make payments within 30 days after certification and approval of billings and estimates.

BVA
Mechanical & Electrical Consulting Engineers
7250 N. 19th St. #102 • Phoenix, AZ 85020 • (602) 371-1333
www.bvaeng.com B-Mail cad@bvaeng.com

DESIGNED BY: J. YURKUS
DRAWN BY: TPS

THIS DRAWING IS AN INSTRUMENT OF SERVICE AND THE PROPERTY OF BVA/VALENTINO ASSOCIATES LTD. THIS DRAWING MAY NOT BE REPRODUCED OR REPRODUCED HEREON IN ANY MANNER WITHOUT THE WRITTEN PERMISSION OF BVA/VALENTINO ASSOCIATES LTD. 7250 NORTH 19TH STREET, SUITE 102 PHOENIX, ARIZONA 85020 (602) 371-1333 FAX (602) 371-1333 E-MAIL: cad@bvaeng.com bvaeng.com



KEYNOTES

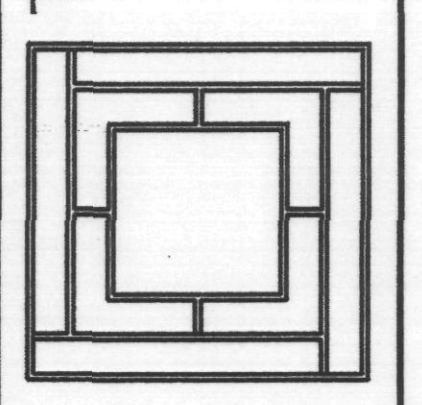
- 2#8, 1#10 GND, 1" CONDUIT.
- ALL LIGHTING CONTROLS FOR CIRCUITS CONNECTED TO "ILLA" ARE LOCATED NEXT TO PANEL IN ELECTRIC ROOM, BUILDING A. SEE DWG E-205.

architecture planning

727 E. MARYLAND AVE
Phoenix, AZ 85014
phone: 602.266.6202
facsimile: 602.265.6212

THIS DRAWING IS AN INSTRUMENT OF SERVICE. IT IS THE PROPERTY OF ELLERMANN & SCHICK, INC. AND MAY NOT BE REPRODUCED WITHOUT WRITTEN PERMISSION.

THE PROMENADE - PHASE 2A
SITE DEVELOPMENT
AT
SCOTTSDALE, ARIZONA
FOR
THE PEDERSON GROUP



SHEET NOTES

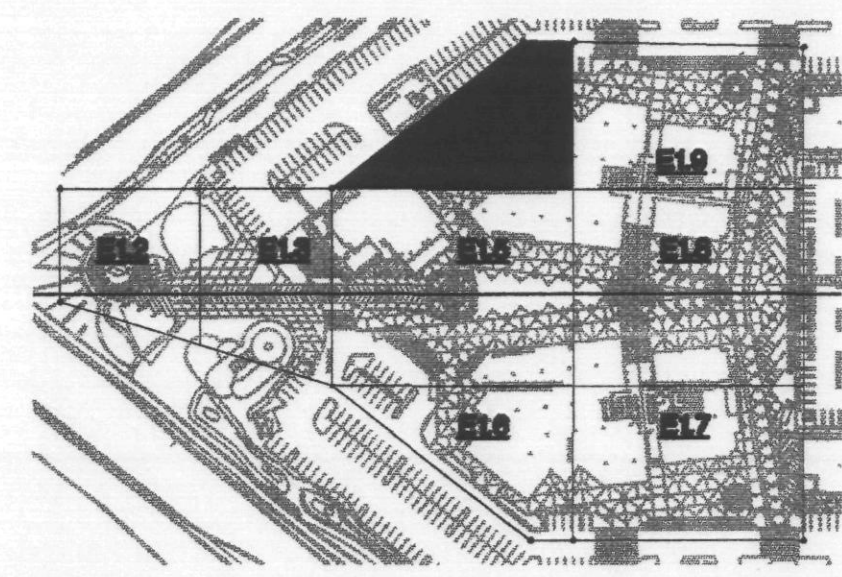
- ALL LIGHTING AND POWER CONDUCTORS SHALL BE #10 AWG IN 3/4" CONDUIT MINIMUM, U.N.O.



per [Signature]

APPROVED
FINAL PLANS PLANNING
01/20/03
DATE
APPROVED BY
[Signature]

KEY MAP



HARDSCAPE PLAN

ARIZONA REVISED STATUTES 32-1128.01.
NOTICE OF EXTENDED CERTIFICATION AND APPROVAL PERIOD PROVISION.
This contract allows the owner to certify and approve billings and estimates within 30 days after the billings and estimates are received from the contractor.
NOTICE OF EXTENDED PAYMENT PROVISION.
This contract allows the owner to make payments within 30 days after certification and approval of billings and estimates.

BVA
Mechanical & Electrical Consulting Engineers
7250 N. 18th St. #102 • Phoenix, AZ 85020 • (602) 371-1333
www.bvaeng.com E-Mail: csa@bvaeng.com

DESIGNED BY: J. YURKUS
DRAWN BY: TPS

THIS DRAWING IS AN INSTRUMENT OF SERVICE AND THE PROPERTY OF BATES/VALENTINO ASSOCIATES LTD. THIS DRAWING MAY NOT BE REPRODUCED OR REPRODUCED HEREOF USED, WITHOUT THEIR WRITTEN PERMISSION.
© COPYRIGHT 2003
BATES/VALENTINO ASSOCIATES LTD.
7055 NORTH 19TH STREET, SUITE 102
PHOENIX, ARIZONA 85020
800-371-1333 FAX 602-371-3675
E-Mail: info@bvaeng.com web@bvaeng.com

MATCHLINE SEE SHEET E1.4 FOR CONTINUATION

WATCHING OFF FOR CONSPIRACIES

MATCHLINE SEE SHEET E1.8 FOR CONTINUATION

E1.5

HARDSCAPE
ELECTRICAL