

08.21.03	SCALE REVISIONS
08.14.03	CITY COMMENTS
06.15.04	TENANT COORDINATION

SCHEMATIC
DESIGN DEVELOPMENT
CONSTRUCTION DOCUMENTS
BID/PRICING PACKAGE
BUILDING DEPT. APPROVAL

DATE ISSUED	05.30.03
DRAWN BY	DCR/CG
CHECKED BY	SMP/RHS
PROJECT NO.	22000
CADD FILE	
SCALE:	AS NOTED
DRAWING NO.	

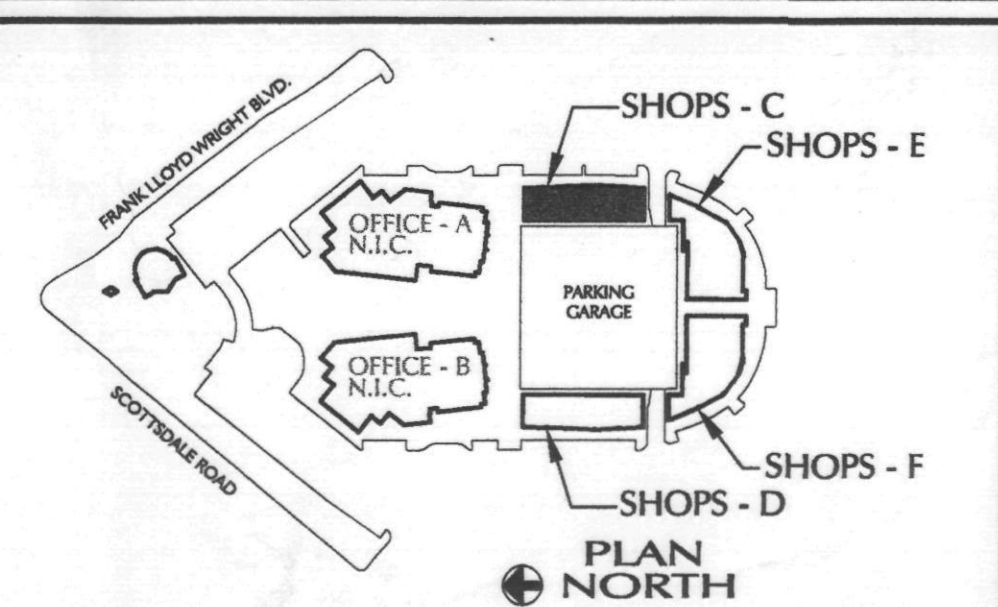
**KEYNOTES**

- 01 - WALL CONSTRUCTION
- 02 - SMOOTH FINISH SYNTHETIC STUCCO OVER PORTLAND CEMENT BROWN COAT ON C.M.U. - PAINTED
- 03 - SMOOTH FINISH E.I.F.S. OVER 1/2" EXT. PLYWOOD SHEATHING AND WOOD FRAME - PAINTED
- 04 - SLOPED PARAPET WALL PER KEYNOTE 02.
- 05 - MASONRY CANOPY COLUMN PER KEYNOTE 01.
- 06 - MASONRY CONTROL JOINT - FULL HEIGHT OF WALL.
- 07 - STUCCO JOINT.
- 08 - CONT. STUCCO REVEAL - SB/A6.4 SIM.
- 09 - STUCCO SOFFIT PER KEYNOTE 02 - SEE R.C.P.
- 10 - COPINGS, ACCENTS AND FASCIA
- 21 - CONTINUOUS SHEET METAL COPING - PAINTED - 6/A6.1 & 7/A6.1.
- 22 - CANOPY PROFILE PER KEYNOTE 02 WITH CONT. FRIEZE ACCENT PAINTED
- 23 - CUSTOM COLUMN COVER - TYPE 1 - SEE DETAIL 1/A6.4
- 24 - CUSTOM COLUMN COVER - TYPE 2 - SEE DETAIL 2/A6.4
- 25 - CUSTOM MALL ACCENT FULL HEIGHT - SEE DETAIL 3/A6.4
- 26 - CONT. TUBE STEEL SIGN BAND - PAINT FINISH
- 27 - SURFACE MOUNTED STEEL FRAME GRILLE - PAINT FINISH
- 28 - PERFORATED METAL PANEL - PAINT FINISH
- 29 - CONT. FRIEZE ACCENT PER KEYNOTE 02. APPLIED ON BOTH OF CANOPY PROFILE.
- 30 - CURVED STEEL PLATE TRELLIS - PAINT FINISH
- 31 - PAINTED STEEL AWNING FRAME WITH FABRIC COVER.
- 32 - WALL MOUNTED METAL ACCENT - PAINTED
- 33 - ANGLED STEEL PLATE TRELLIS WITH SUPPORT RODS - PAINTED
- 34 - 1/2" E.I.F.S. PANEL OVER C.M.U. - PAINTED, FINISH TO BE SMOOTH SYNTHETIC STUCCO.
- 35 - RECESSED STEEL FRAME GRILLE WITH TRANSLUCENT PANEL BACKING. (GRILLE TO BE BACK LIT). PAINT FINISH
- 36 - RECESSED STEEL FRAME GRILLE SUSPENDED FROM CEILING.
- 40 - DOORS, WINDOWS & LOUVERS
- 41 - CUSTOM COLOR ALUMINUM STOREFRONT DOOR.
- 42 - CUSTOM COLORED ALUMINUM STOREFRONT WITH STONE BULKHEAD AT SILL.
- 43 - BACK LIT S.L. GRILLE WITH TRANSLUCENT PANELS IN METAL FRAME-PAINTED
- 44 - EXTERIOR HOLLOW METAL DOOR & FRAME - PAINTED FINISH
- 45 - MANUFACTURED CUSTOM COLOR ALUMINUM LOUVER SECTION.
- 46 - CUSTOM COLORED BRAKE METAL COLUMN COVER AT STOREFRONT.
- 47 - BUTTJOINT AT STOREFRONT SYSTEM.
- 50 - MISCELLANEOUS
- 51 - LINE OF SOFFIT/ CLS. BEYOND.
- 52 - LINE OF ROOF BEYOND.
- 53 - LINE OF BUILDING WALL BEYOND.
- 54 - SERVICE ENTRANCE SECTION CABINET ON CONCRETE PAD. - PAINT FINISH
- 55 - WALL MOUNTED EXTERIOR LIGHT FIXTURE
- 56 - SIGNAGE N.I.C. AND NOT A PART OF THIS PERMIT.
- 57 - BUILDING ADDRESS NUMBERS.
- 58 - LINE OF CHANGE IN PLANE - SEE FLOOR PLAN
- 59 - EXTERIOR WALL MOUNTED TELEPHONE BOARD CABINET. - PAINT FINISH
- 60 - CUSTOM SCUPPER RECEIVER HEAD. - PAINT FINISH - SEE DETAIL 15/A6.1.
- 61 - DOWNSPOUT TO RUN TO STORM DRAIN BELOW GRADE - PAINTED.
- 62 - EXTERIOR SERVICE LADDER WITH HINGED COVER PLATE AT BTM. - PAINTED

**SHEET NOTES**

- A - EXTERIOR ELEVATIONS REFERENCE FROM FINISH FLOOR ELEVATION AT 0'-0"
- B - REFERENCE CIVIL DRAWINGS FOR ACTUAL FINISH ELEVATION
- C - PAINT ON STUCCO/ PLASTER TO BE 100% ACRYLIC TYPE
- D - PAINT EXTERIOR METAL DOORS & FRAMES AT REAR OF BUILDING COLOR TO MATCH WALL, UNLESS NOTED OTHERWISE
- E - SEALANT AT MASONRY CONTROL JOINTS TO MATCH WALL COLOR
- F - EXTERIOR INSULATION FINISH SYSTEM (E.I.F.S.) SHALL BE 3/4" FOAM MIN. OVER 1/2" EXTERIOR GRADE PLYWOOD
- G - STOREFRONT ELEVATIONS ARE DIMENSIONED FROM OUTSIDE FACE OF JAMB TO CENTER OF MULLION/BUTT JOINT.
- H - STOREFRONT GLAZING HAS A 6'-0" MAX. HORIZONTAL SPAN WHERE GLAZING EXCEEDS 6'-0" HORIZONTALLY A MID SPAN BUTT JOINT SHALL BE ADDED - SEE A6.0 FOR TYPICAL STOREFRONT SECTION.
- J - STOREFRONT GLAZING ADJACENT TO DOOR SHALL BE TEMPERED WITHIN 2'-0" OF DOOR EDGE. DOORS SHALL HAVE A 1'-6" WIDE SIDE LIGHT EACH SIDE OF DOOR UNO.
- K - SEE SHEET A2.4 FOR TYPICAL METAL WORK NOTES.

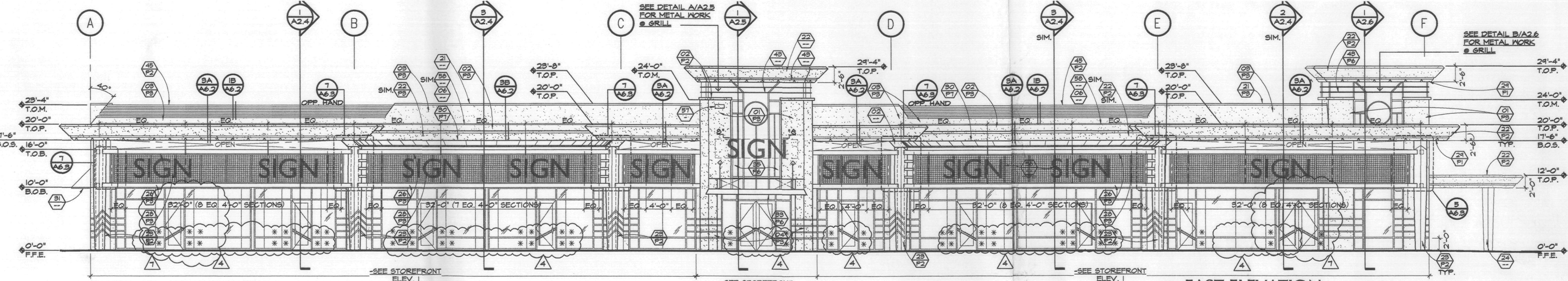
**KEY MAP**



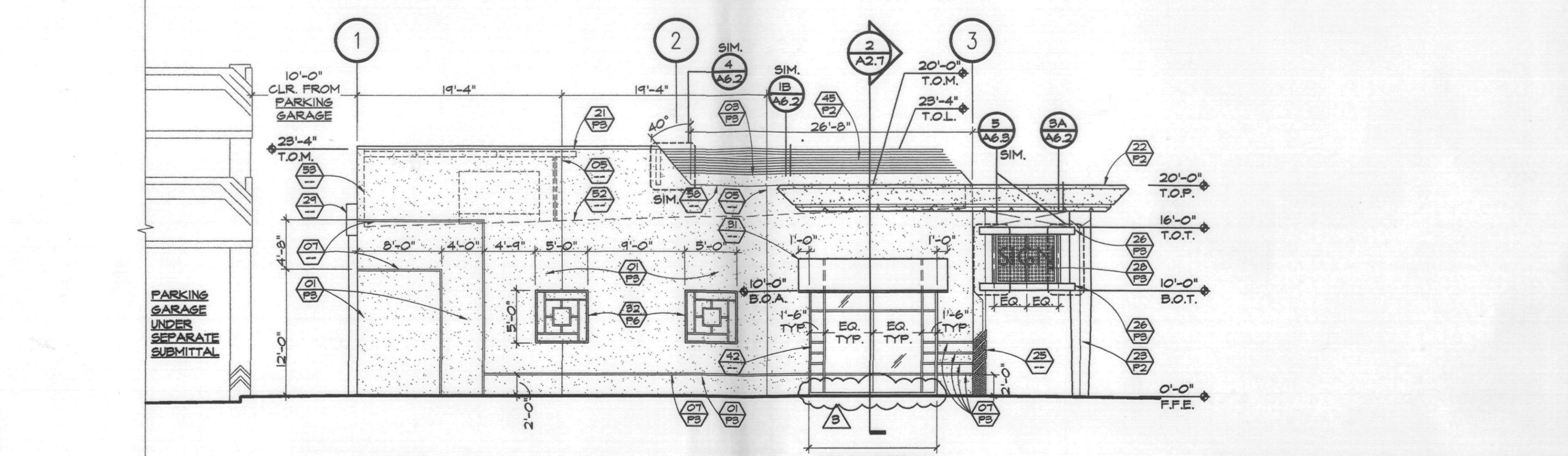
BLDG. C (SHELL BUILDING)

**COLOR SCHEDULE**

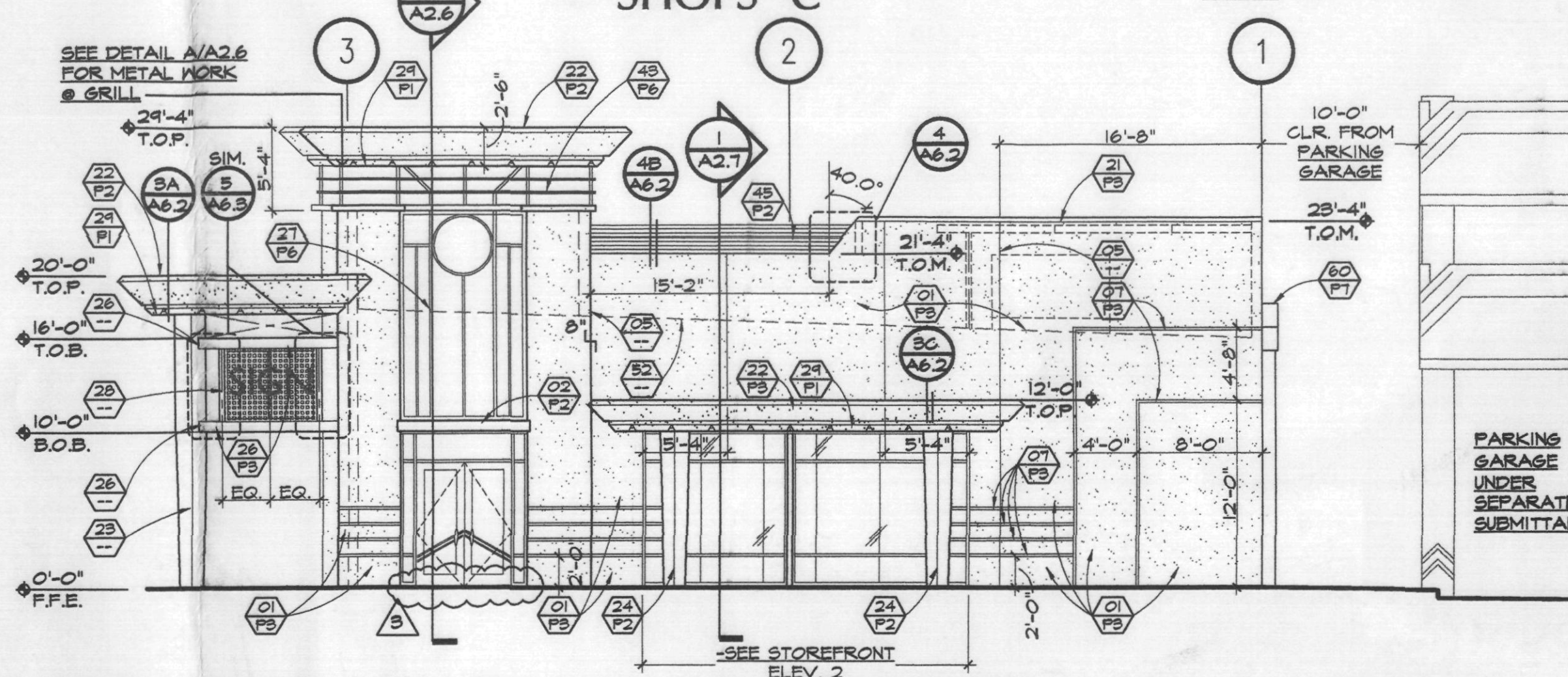
PAINT NUMBER	LOCATION	COLOR, FINISH	MANUFACTURER
P1	PREFORMED FASCIA	FAUX FINISH COPPER	CUSTOM
P2	PREFORMED FASCIA	CUSTOM BARK MILCH	FRAZEE
P3	PREFORMED FASCIA	DESERT TUMBLEWEED	FRAZEE
P4	PREFORMED FASCIA	205 FLAT LIGHT ANTIQUE	FRAZEE
P5	PREFORMED FASCIA	WILD COUNTRY	FRAZEE
P6	PREFORMED FASCIA	205 FLAT AGUA SEA	FRAZEE
P7	PREFORMED FASCIA	125 SEMI GLOSS RED CLAY	ICI



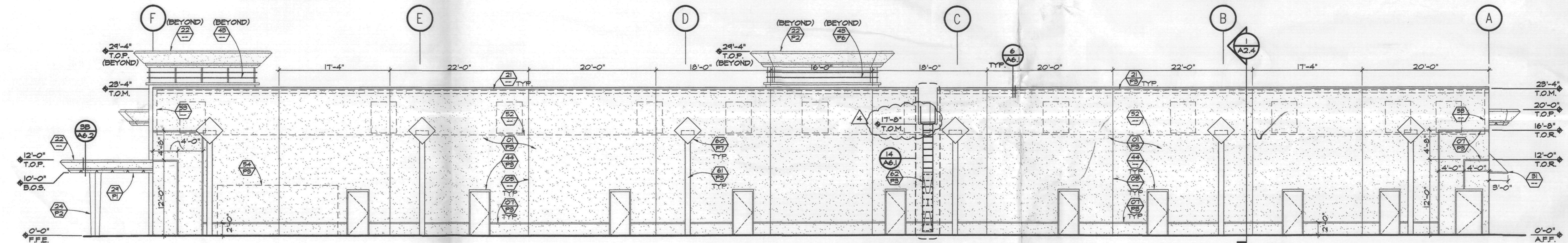
**A EAST ELEVATION SHOPS 'C'**  
SCALE: 1/8"=1'-0"



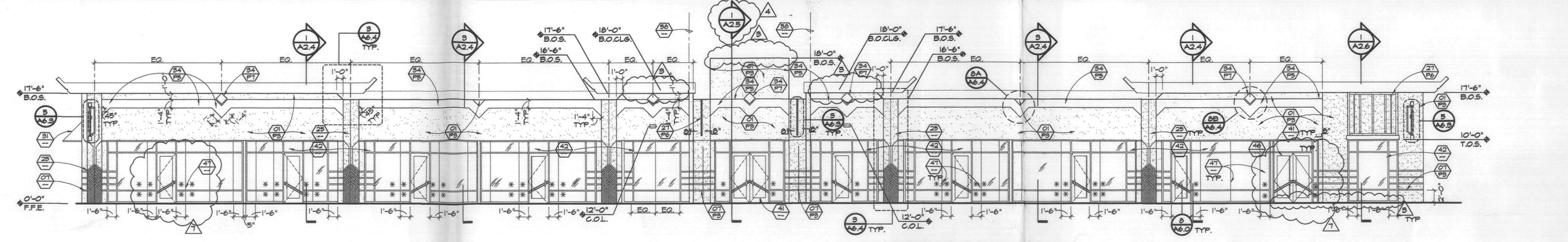
**B SOUTH ELEVATION SHOPS 'C'**  
SCALE:



**C NORTH ELEVATION SHOPS 'C'**  
SCALE: 1/8"=1'-0"

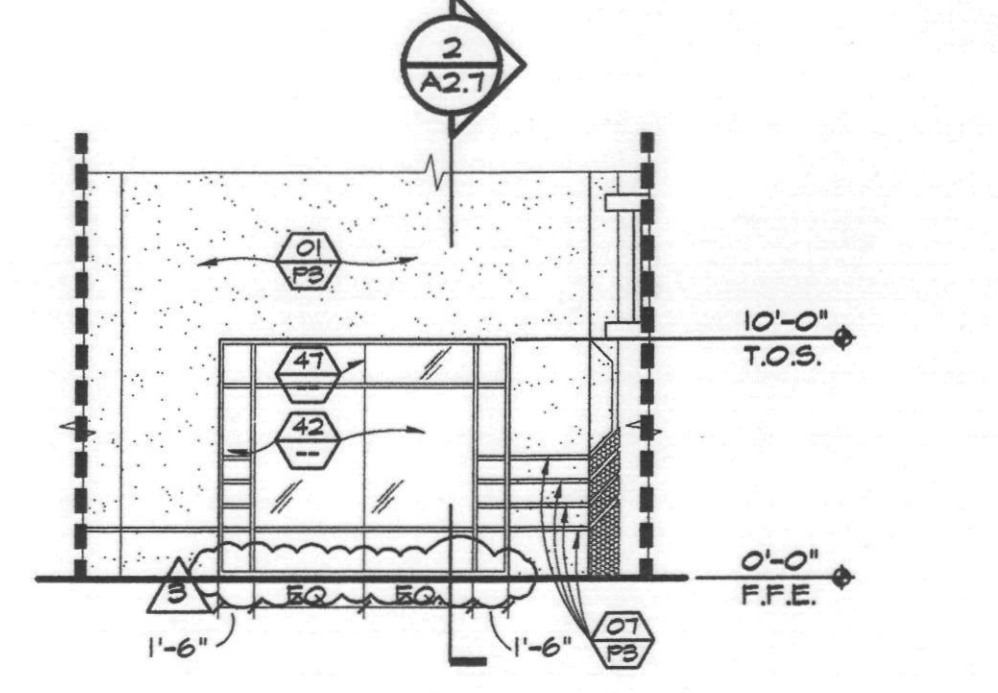


**D WEST ELEVATION SHOPS 'C'**  
SCALE: 1/8"=1'-0"

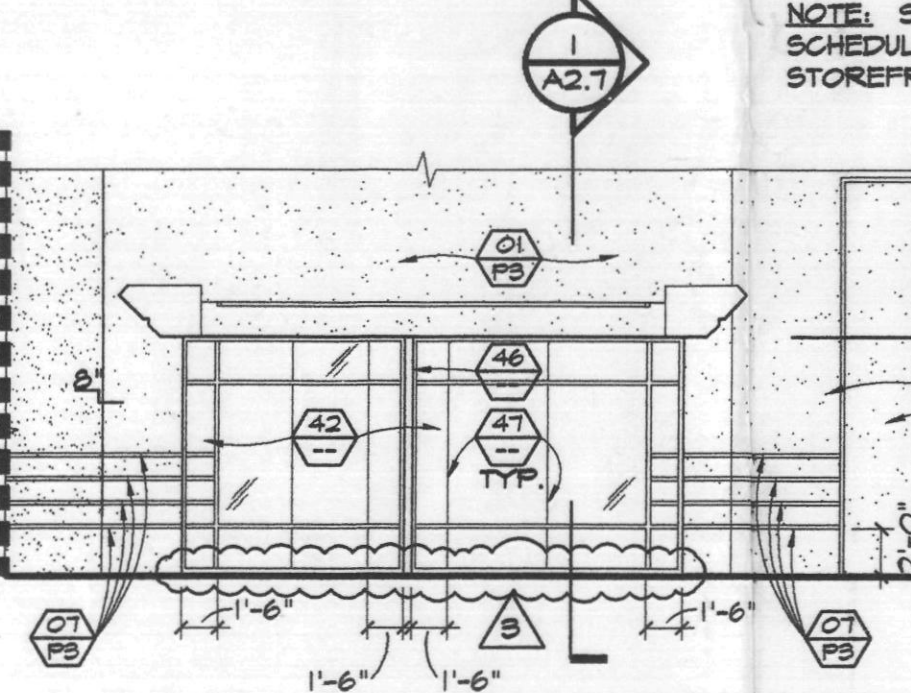


**1 STOREFRONT ELEVATION SHOPS 'C'**  
SCALE: 1/8"=1'-0"

\* - TEMPERED GLASS. PROVIDE TEMPERED GLASS AT ALL GLASS DOORS AND ADJACENT SIDE LITES.



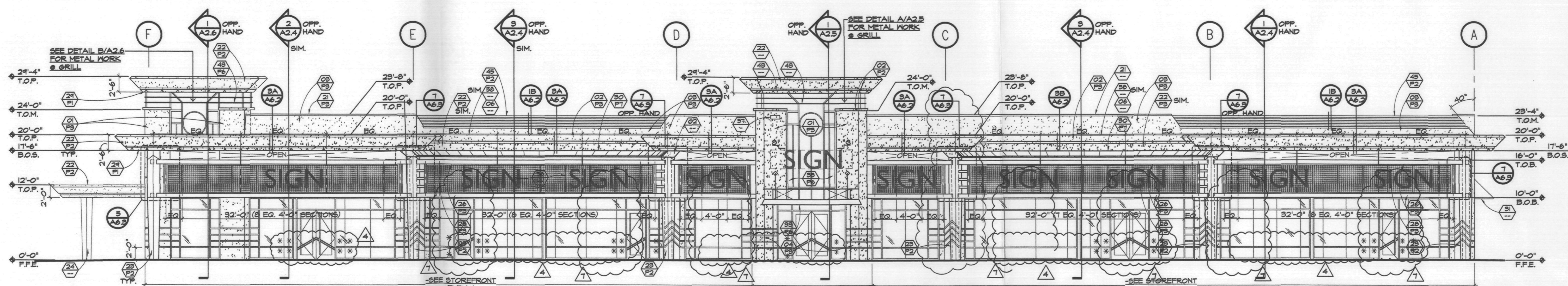
**2 STOREFRONT ELEVATION SHOPS 'C'**  
SCALE: 1/8"=1'-0"



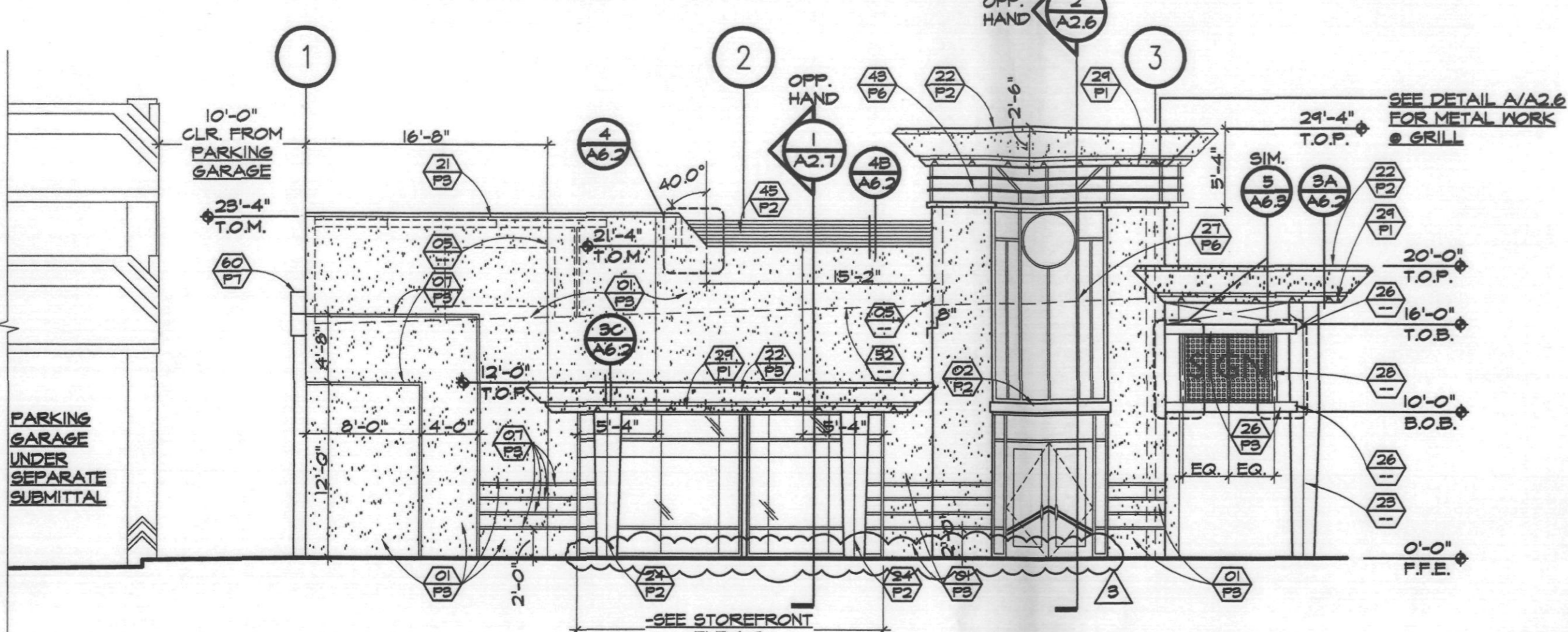
**3 STOREFRONT ELEVATION SHOPS 'C'**  
SCALE: 1/8"=1'-0"



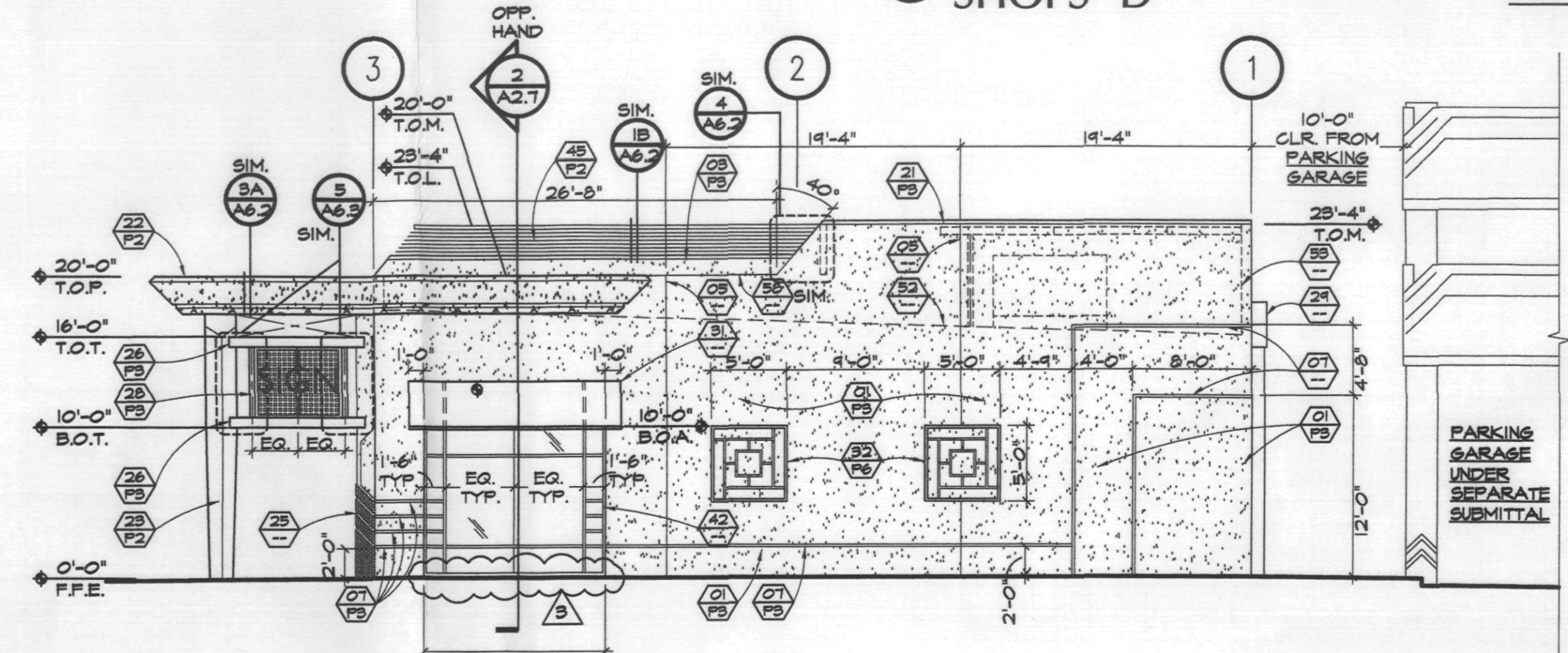
**1 STOREFRONT ELEVATION SHOPS 'C'**  
SCALE: 1/8"=1'-0"



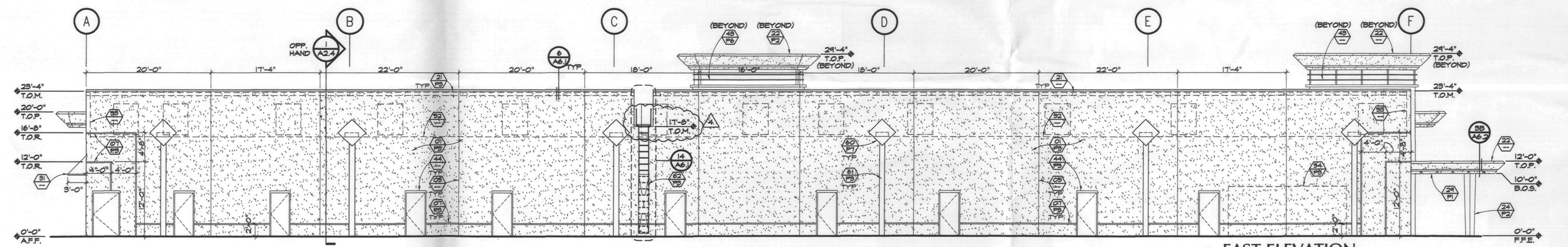
**A WEST ELEVATION SHOPS 'D'** SCALE: 1/8"=1'-0"



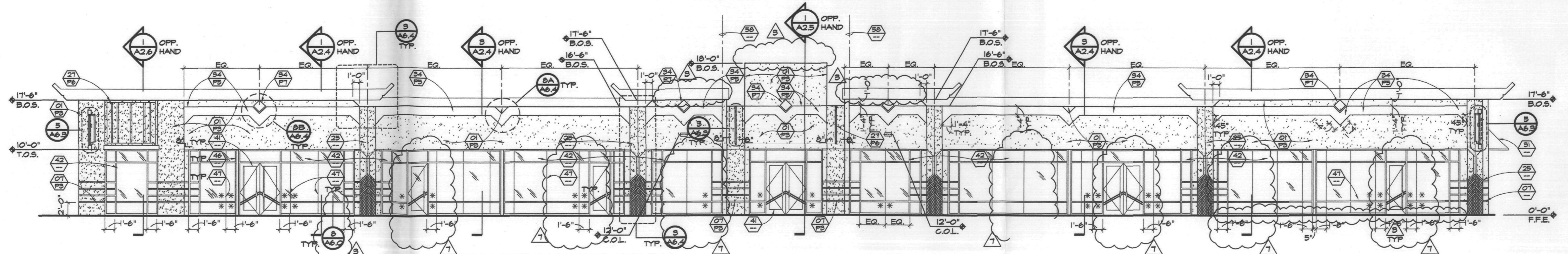
**C NORTH ELEVATION SHOPS 'D'** SCALE: 1/8"=1'-0"



**B SOUTH ELEVATION SHOPS 'D'** SCALE: 1/8"=1'-0"

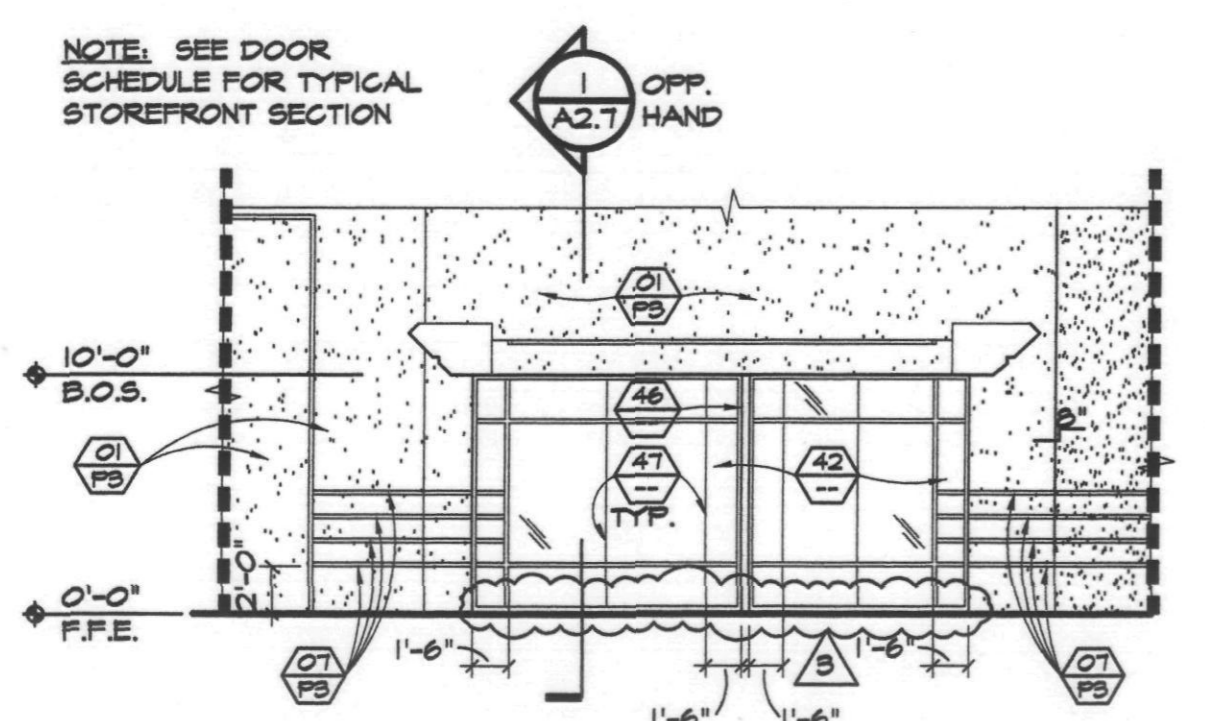


**D EAST ELEVATION SHOPS 'D'** SCALE: 1/8"=1'-0"

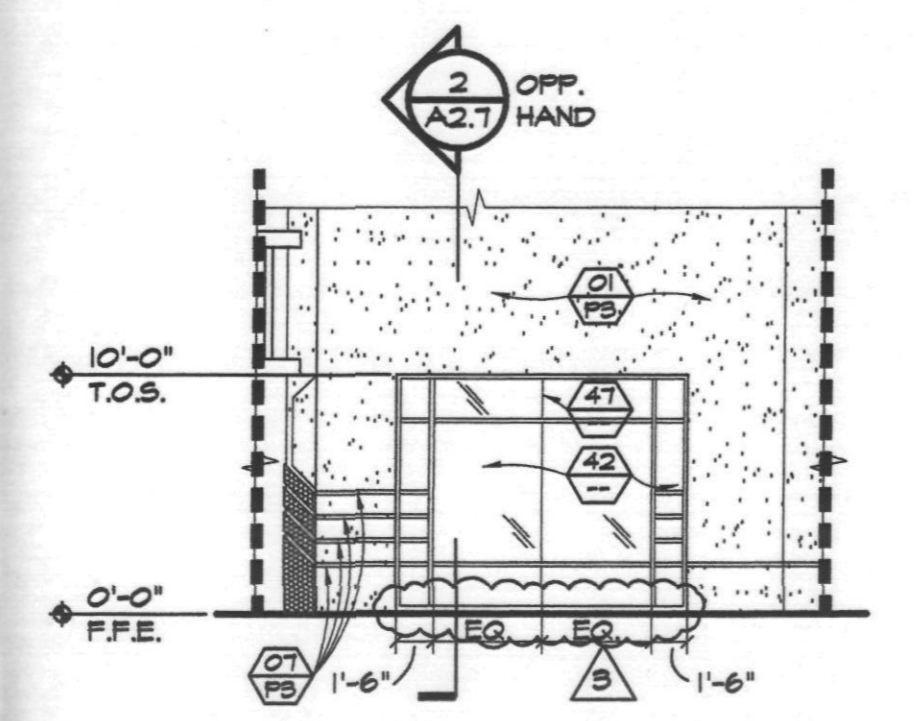


**1 STOREFRONT ELEVATION SHOPS 'D'** SCALE: 1/8"=1'-0"

\* TEMPERED GLASS. PROVIDE TEMPERED GLASS AT ALL GLASS DOORS AND ADJACENT SIDE LITES.



**3 STOREFRONT ELEVATION SHOPS 'D'** SCALE: 1/8"=1'-0"



**2 STOREFRONT ELEVATION SHOPS 'D'** SCALE: 1/8"=1'-0"

**KEYNOTES**

- 01 - WALL CONSTRUCTION
  - 01 SMOOTH FINISH SYNTHETIC STUCCO OVER PORTLAND CEMENT BROWN COAT ON C.M.U. - PAINTED
  - 02 SMOOTH FINISH E.L.F.S. OVER 1/2" EXT. PLYWOOD SHEATHING AND WOOD FRAME - PAINTED
  - 03 SLOPED PARAPET WALL PER KEYNOTE 02.
  - 04 MASONRY CANOPY COLUMN PER KEYNOTE 01.
  - 05 MASONRY CONTROL JOINT - FULL HEIGHT OF WALL.
  - 06 STUCCO JOINT.
  - 07 CONT. STUCCO REVEAL - SB/A6.4 SIM.
  - 08 STUCCO SOFFIT PER KEYNOTE 02 - SEE R.C.P.
- 09 - COPINGS, ACCENTS AND FASCIA
  - 21 CONTINUOUS SHEET METAL COPING - PAINTED. - 6/A6.1 & 7/A6.1.
  - 22 CANOPY PROFILE PER KEYNOTE 02 WITH CONT. FRIEZE ACCENT - PAINTED
  - 23 CUSTOM COLUMN COVER - TYPE 1 - SEE DETAIL 1/A6.4
  - 24 CUSTOM COLUMN COVER - TYPE 2 - SEE DETAIL 2/A6.4
  - 25 CUSTOM WALL ACCENT FULL HEIGHT - SEE DETAIL 3/A6.4
  - 26 CONT. TUBE STEEL SIGN BAND - PAINT FINISH
  - 27 SURFACE MOUNTED STEEL FRAME GRILLE - PAINT FINISH
  - 28 PERFORATED METAL PANEL - PAINT FINISH
  - 29 CONT. FRIEZE ACCENT PER KEYNOTE 02. APPLIED ON BTM OF CANOPY PROFILE.
  - 30 CURVED STEEL PLATE TRELLIS - PAINT FINISH
  - 31 PAINTED STEEL AWNING FRAME WITH FABRIC COVER.
  - 32 WALL MOUNTED METAL ACCENT - PAINTED
  - 33 ANGLED STEEL PLATE TRELLIS WITH SUPPORT RODS - PAINTED
  - 34 1 1/2" E.L.F.S. PANEL OVER C.M.U. - PAINTED. FINISH TO BE SMOOTH SYNTHETIC STUCCO.
  - 35 RECESSED STEEL FRAME GRILLE WITH TRANSLUCENT PANEL BACKING. (GRILLE TO BE BACK LIT). PAINT FINISH
  - 36 RECESSED STEEL FRAME GRILLE SUSPENDED FROM CEILING.
- 37 - DOORS, WINDOWS & LOUVERS
  - 41 CUSTOM COLOR ALUMINUM STOREFRONT DOOR.
  - 42 CUSTOM COLORED ALUMINUM STOREFRONT WITH STONE BULKHEAD AT SILL.
  - 43 BLACK LIT STL. GRILLE WITH TRANSLUCENT PANELS IN METAL FRAME-PAINTED
  - 44 EXTERIOR HOLLOW METAL DOOR & FRAME - PAINTED FINISH
  - 45 MANUFACTURED CUSTOM COLOR ALUMINUM LOUVER SECTION.
  - 46 CUSTOM COLORED BRASS METAL COLUMN COVER AT STOREFRONT.
  - 47 BUTTJOINT AT STOREFRONT SYSTEM.
- 38 - MISCELLANEOUS
  - 51 LINE OF SOFFIT/ CLS. BEYOND.
  - 52 LINE OF ROOF BEYOND.
  - 53 LINE OF BUILDING WALL BEYOND.
  - 54 SERVICE ENTRANCE SECTION CABINET ON CONCRETE PAD. - PAINT FINISH
  - 55 WALL MOUNTED EXTERIOR LIGHT FIXTURE.
  - 56 SIGNAGE N.I.C. AND NOT A PART OF THIS PERMIT.
  - 57 BUILDING ADDRESS NUMBERS.
  - 58 LINE OF CHANGE IN PLANE - SEE FLOOR PLAN
  - 59 EXTERIOR WALL MOUNTED TELEPHONE BOARD CABINET. - PAINT FINISH
  - 60 CUSTOM SUPPER RECEIVER HEAD. - PAINT FINISH - SEE DETAIL 15/A6.1.
  - 61 DOWNSPOUT TO RUN TO STORM DRAIN BELOW GRADE - PAINTED.
  - 62 EXTERIOR SERVICE LADDER WITH HINGED COVER PLATE AT BTM. - PAINTED

**ABBREVIATIONS**

B.O.A. = BOTTOM OF AWNING	T.O.B. = TOP OF BEAM
B.O.B. = BOTTOM OF BEAM	T.O.D. = TOP OF DECK
B.O.F. = BOTTOM OF FASCIA	T.O.L. = TOP OF LOUVERS
B.O.S. = BOTTOM OF SOFFIT	T.O.M. = TOP OF MASONRY
B.O.T. = BOTTOM OF TRELLIS	T.O.P. = TOP OF PARAPET (FRAMED)
COL. = COLUMN	T.O.R. = TOP OF REVEAL
C.O.L. = CENTER OF LIGHT	T.O.S. = TOP OF STOREFRONT
(E) = EXISTING	T.O.T. = TOP OF TRELLIS
F.F.E. = FINISH FLOOR ELEVATION	TYP. = TYPICAL
T.O.A. = TOP OF AWNING	

NOTE: ALL KEYNOTES MAY NOT APPLY TO EACH SHEET

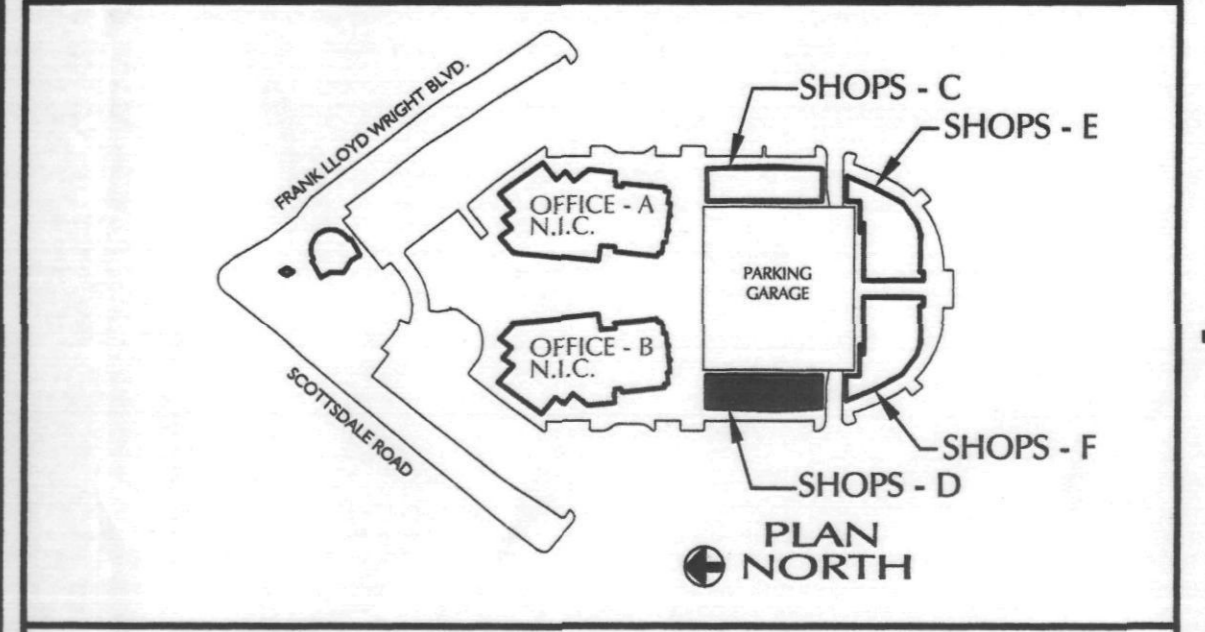
**SHEET NOTES**

- A EXTERIOR ELEVATIONS REFERENCE FROM FINISH FLOOR ELEVATION AT 0'-0"
- B REFERENCE CIVIL DRAWINGS FOR ACTUAL FINISH ELEVATION
- C PAINT ON STUCCO/ PLASTER TO BE 100% ACRYLIC TYPE
- D PAINT EXTERIOR METAL DOORS & FRAMES AT REAR OF BUILDING COLOR TO MATCH WALL, UNLESS NOTED OTHERWISE
- E SEALANT AT MASONRY CONTROL JOINTS TO MATCH WALL COLOR
- F EXTERIOR INSULATION FINISH SYSTEM (E.I.F.S.) SHALL BE 3/4" FOAM MIN. OVER 1/2" EXTERIOR GRADE PLYWOOD
- G STOREFRONT ELEVATIONS ARE DIMENSIONED FROM OUTSIDE FACE OF JAMB TO CENTER OF MULLION/BUTT JOINT.
- H STOREFRONT GLAZING HAS A 6'-0" MAX. HORIZONTAL SPAN WHERE GLAZING EXCEEDS 6'-0" HORIZONTALLY A MID SPAN BUTT JOINT SHALL BE ADDED - SEE A6.0 FOR TYPICAL STOREFRONT SECTION.
- J STOREFRONT GLAZING ADJACENT TO DOOR SHALL BE TEMPERED WITHIN 2'-0" OF DOOR EDGE. DOORS SHALL HAVE A 1'-6" WIDE SIDE LIGHT EACH SIDE OF DOOR U.N.D.
- K SEE SHEET A2.4 FOR TYPICAL METAL WORK NOTES.

**COLOR SCHEDULE**

PAINT NUMBER	LOCATION	COLOR, FINISH	MANUFACTURER
P1	PREFORMED FASCIA	FAUX FINISH COPPER	CUSTOM
P2	PREFORMED FASCIA	BARK MULCH 8784M 208 FLAT	FRAZEE
P3	PREFORMED FASCIA	DESERT TUMBLEWEED 8725M 208 FLAT	FRAZEE
P4	PREFORMED FASCIA	LIGHT ANTIQUE 8749M 208 FLAT	FRAZEE
P5	PREFORMED FASCIA	WILD COUNTRY 8755D 208 FLAT	FRAZEE
P6	PREFORMED FASCIA	AQUA SEA 8675D 128 SEMI GLOSS	FRAZEE
P7	PREFORMED FASCIA	RED CLAY 218 FLAT	ICI

**KEY MAP**



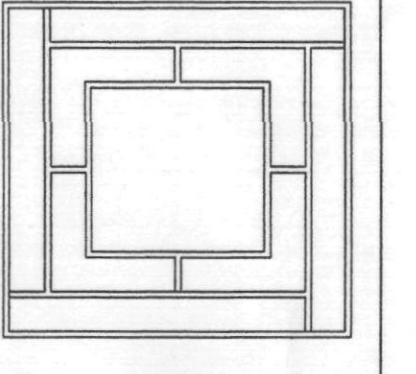
**BLDG. 'D' (SHELL BUILDING)**

ARCHITECTURAL ELEVATIONS APPROVED  
 BY THE CITY OF PHOENIX PLANNING DEPARTMENT  
 DATE 8.6.04  
 CASE NUMBER 08-14-03

**Illermann chick**  
 architecture planning  
 727 E. MARYLAND AVE  
 PHOENIX, AZ 85014  
 PHONE: 602.266.6202  
 FACSIMILE: 602.265.6212

THIS DRAWING IS AN INSTRUMENT OF SERVICE. IT IS THE PROPERTY OF ILLERMAN CHICK, INC. AND MAY NOT BE REPRODUCED WITHOUT WRITTEN PERMISSION.

**THE PROMENADE - PHASE 2**  
 SHOPS C, D, E & F - RETAIL SHELL BUILDINGS  
 AT  
 SCOTTSDALE, ARIZONA  
 FOR  
**THE PEDERSON GROUP**



**Pederson GROUP, INC.**  
 11825 RICHMOND BL  
 SCOTTSDALE, AZ 85257  
 PHOENIX, AZ

DATE	DESCRIPTION
05.21.03	G.M.P. ORIGINATIONS
08.14.03	CITY COMMENTS
06.15.04	TENANT COORDINATION
06.30.04	TENANT COORDINATION

DATE	DESCRIPTION
05.30.03	SCHEMATIC
	DESIGN DEVELOPMENT
	CONSTRUCTION DOCUMENTS
	BID/PRICING PACKAGE
	BUILDING DEPT. APPROVAL

DATE ISSUED 05.30.03  
 DRAWN BY DCR/CG  
 CHECKED BY SMP/RHS  
 PROJECT NO. 22000  
 CADD FILE  
 SCALE: AS NOTED  
 DRAWING NO. **A3.3**  
**EXTERIOR ELEVATIONS & STOREFRONT ELEVATIONS**