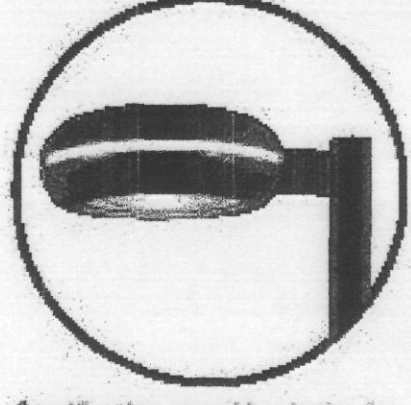


### CATALINA SMALL/MEDIUM/LARGE



*Specification round luminaire for extra appeal in parking areas, auto dealerships, apartments, parks, entrances, and other commercial applications.*

**Features**

- Two-piece, spun aluminum housing. Standard reveal accentuated with color vinyl trim strip.
- Spun aluminum door with clear, flat tempered glass lens. Fully gasketed to housing, secured with captive screws.
- Specular, anodized aluminum reflectors for horizontal lamp, provide Type II, III, IV or V square light patterns. C4 and C4A, Type II and Type III reflectors feature unique, multi-faceted design patent pending. C4-B Type IV reflector field foldable.
- Excluded aluminum arm provided for pole mount. Spider mount luminaire has four aluminum tube arms and cast support for 2 1/2" OD tenon. Cast aluminum wall bracket.
- Mogul porcelain socket, puts rated, with spring loaded, nickel plated center contact and reinforced lamp grip screw shell. Medium base for ED-17 lamp.
- CMA type ballast, HF, starting rated at 20 F (40 F for HPS). Ballast components mount to removable panel.
- TGC thermostat polyester powder paint finish with choice of six standard, and four premium standard colors.
- UL and CSA listed for wet locations.

**Ordering Information**

Order No. Example: C4-II - PM - M400 - III - MT - PE - PLS - WTR

**Model**

- C4-I 100w 175w
- C4-II 200w 400w
- C4-III 400w

**Mounting Media**

- PM - arm mount
- WB - wall bracket for C4-I and C4-II
- SM-SF - spider mount with slipfit for 2 1/2" OD tenon

**Lamp Types/Watts**

- ED-17 - METAL HALIDE
- M175 - ED-17
- M400 - ED-17
- M1200 - ED-17
- M1800 - ED-17
- M1200S - ED-17
- M1800S - ED-17
- S100 - HIGH PRESSURE SODIUM
- S150 - ED-29

**Color**

- STANDARD: BEZ - dark bronze, S6B - black, SMT - white, PRC - grey, PLS - platinum silver, RFP - forest green
- PREMIUM STANDARD: BEZ - medium bronze, BGE - beige, UV - light ivory, CMB - burgundy

**Reflector**

- I - narrow asymmetric
- II - symmetric
- IV - forward throw
- VS - symmetrical square

**Dimensions**

Model	A Dia.	B	C	EPA	Wt./Lb.
C4-I	21"	9.37"	19.37"	1.0	33
C4-II	26"	10"	23.5"	1.5	46
C4-III	34"	12.5"	29.87"	2.1	75

SPALDING

## FIXTURE TYPES AA, BB, CC

### POWER and LIGHTING

20 AMP, 125 VOLT, DUPLEX GROUNDING TYPE RECEPTACLE. HUBBELL #53621. MOUNT AT 18" AFF TO CENTERLINE UNLESS NOTED OTHERWISE.

TWO 20 AMP, 125 VOLT, DUPLEX GROUNDING TYPE RECEPTACLES. HUBBELL #53621. MOUNT IN COMMON BOX WITH COMMON PLATE AT 18" AFF TO CENTERLINE UNLESS NOTED OTHERWISE.

20 AMP, 125 VOLT, DUPLEX GROUND FAULT INTERRUPTER TYPE RECEPTACLE. HUBBELL #GF-53621. MOUNT AT 18" AFF TO CENTERLINE UNLESS NOTED OTHERWISE.

20 AMP, 125 VOLT, DUPLEX GROUND FAULT INTERRUPTER TYPE RECEPTACLE. HUBBELL #GF-53621, WITH WEATHERPROOF COVERPLATE. MOUNT AT 24" AFF UNLESS NOTED OTHERWISE.

STANDARD STEEL JUNCTION BOX WITH COVER IN AN ACCESSIBLE LOCATION. LOCATE AND CONNECT AS DIRECTED.

FLOOR MOUNTED JUNCTION BOX.

20 AMP, SINGLE POLE SWITCH. HUBBELL #HBL1221. MOUNT AT 44" AFF TO CENTERLINE UNLESS NOTED OTHERWISE.

20 AMP, SINGLE POLE SWITCH. HUBBELL #HBL1221. PROVIDE WEATHERPROOF COVER WITH HINGE ON TOP. MOUNT AT 44" AFF TO CENTERLINE UNLESS NOTED OTHERWISE.

20 AMP, SINGLE POLE SWITCH. HUBBELL #HBL1221. SURFACE MOUNT AT 44" AFF TO CENTERLINE UNLESS NOTED OTHERWISE.

FLUORESCENT, INCANDESCENT, LED, AND/OR HID LIGHTING FIXTURE COMPLETE WITH LAMPS. REFER TO LIGHTING FIXTURE SCHEDULE FOR ADDITIONAL INFORMATION.

SWITCHBOARD, UNIT SUBSTATION, OR MOTOR CONTROL CENTER. REFER TO DRAWINGS AND SPECIFICATIONS FOR DETAILS.

LIGHTING AND APPLIANCE PANEL BOARD - FLUSH MOUNTED. REFER TO DRAWINGS AND SPECIFICATIONS FOR DETAILS.

LIGHTING AND APPLIANCE PANEL BOARD - SURFACE MOUNTED. REFER TO DRAWINGS AND SPECIFICATIONS FOR DETAILS.

POWER TRANSFORMER. SIZE AND TYPE NOTED ON PLANS. REFER TO SPECIFICATIONS FOR DETAILS.

PHOTOCELL. REFER TO DRAWINGS FOR DETAILS.

TIME CLOCK. REFER TO DRAWINGS FOR DETAILS.

RACEWAY AND CONDUCTORS CONCEALED ABOVE CEILING OR IN WALL AT ELECTRICAL CONTRACTOR'S OPTION. #12 AWG MINIMUM SIZE CONDUCTOR UNLESS NOTED OTHERWISE. ALL RACEWAYS TO CONTAIN SEPARATE EQUIPMENT GROUNDING CONDUCTOR.

CONDUIT BELOW FLOOR OR UNDERGROUND. DEPTH OF UNDERGROUND CONDUITS SHALL BE PER NEC.

RACEWAY DOWN. #12 AWG MINIMUM SIZE CONDUCTOR UNLESS NOTED OTHERWISE. ALL RACEWAYS TO CONTAIN SEPARATE EQUIPMENT GROUNDING CONDUCTOR.

RACEWAY UP. #12 AWG MINIMUM SIZE CONDUCTOR UNLESS NOTED OTHERWISE. ALL RACEWAYS TO CONTAIN SEPARATE EQUIPMENT GROUNDING CONDUCTOR.

FLEXIBLE METAL CONDUIT OR LIQUIDTIGHT FLEXIBLE METAL CONDUIT (REFER TO SPECIFICATIONS) AND WIRING. #12 AWG MINIMUM SIZE CONDUCTOR UNLESS NOTED OTHERWISE. ALL RACEWAYS TO CONTAIN SEPARATE EQUIPMENT GROUNDING CONDUCTOR.

CONCEALED BRANCH CIRCUIT HOMERUN. FOR NORMAL BRANCH CIRCUIT WIRING CONTRACTOR MAY COMBINE UP TO THREE CIRCUITS IN ONE RACEWAY. ALL RACEWAYS TO CONTAIN SEPARATE EQUIPMENT GROUNDING CONDUCTOR.

NOTE:

- THE QUANTITY AND AMPACITY OF BRANCH CIRCUIT CONDUCTORS, UNLESS NOTED OTHERWISE, OR AS REQUIRED BY THE ELECTRICAL SPECIFICATIONS, SHALL FOLLOW THE STANDARD OF ONE #12 AWG CONDUCTOR PER CIRCUIT/PHASE SHOWN PLUS ONE #12 AWG NEUTRAL CONDUCTOR (WHERE A NEUTRAL CONDUCTOR IS REQUIRED) FOR A TYPICAL THREE CIRCUIT OR LESS HOMERUN.
- WHEN SERVING FLUORESCENT AND/OR HID LIGHTING, COMBINED BRANCH CIRCUIT HOMERUN NEUTRAL CONDUCTOR SHALL BE CONSIDERED AS A CURRENT CARRYING CONDUCTOR AND ALL RESPECTIVE RACEWAY CONDUCTORS SHALL BE DE-RATED PER NEC.
- BRANCH CIRCUITS SERVING COMPUTER RECEPTACLES MAY BE COMBINED PROVIDING EACH BRANCH CIRCUIT IS EITHER WIRED WITH A SEPARATE NEUTRAL OR THE SHARED NEUTRAL IS OVERSIZED. EACH NEUTRAL SHALL BE CONSIDERED A CURRENT CARRYING CONDUCTOR AND ALL RESPECTIVE RACEWAY CONDUCTORS SHALL BE DE-RATED PER NEC.

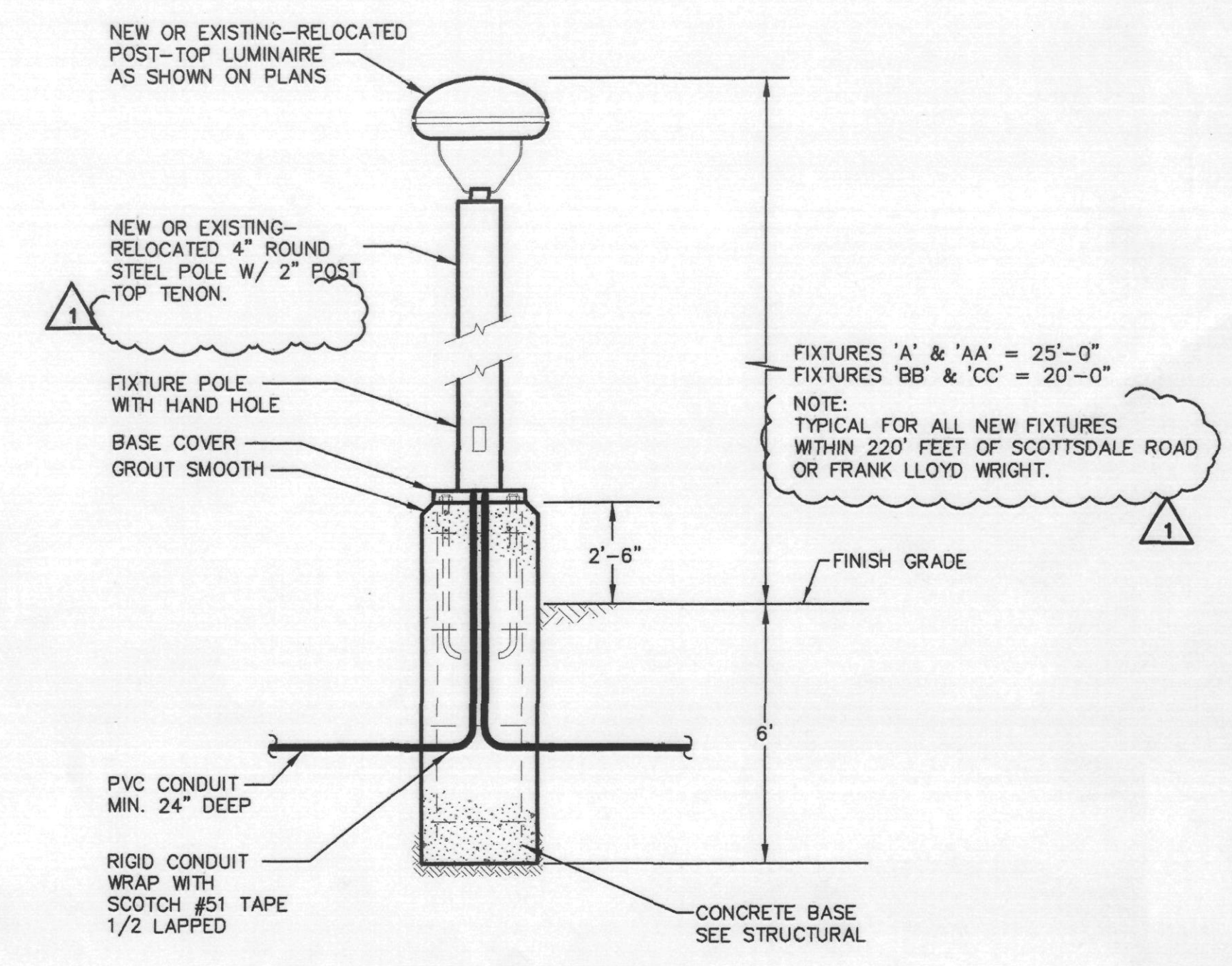
RACEWAY AND CONDUCTORS RUN EXPOSED ON CEILING OR WALLS AT ELECTRICAL CONTRACTOR'S OPTION. #12 AWG MINIMUM SIZE CONDUCTOR UNLESS NOTED OTHERWISE. ALL RACEWAYS TO CONTAIN SEPARATE EQUIPMENT GROUNDING CONDUCTOR.

### LIGHTING FIXTURE SCHEDULE

TAG	FIXTURE DESCRIPTION	MANUFACTURER	CATALOG NUMBER	LAMPING TYPE	VOLTS	MOUNTING
A	EXISTING 1000W MH FIXTURE 25' MOUNTING HEIGHT	---	---	1 1000W MH EXISTING	480	POLE
C	EXISTING 400W MH FIXTURE 20' MOUNTING HEIGHT	---	---	1 400W MH EXISTING	480	POLE
D	EXISTING 400W MH FIXTURE 20' MOUNTING HEIGHT	---	---	1 400W MH EXISTING	480	POLE
AA	AREA LUMINAIRE WITH VERTICAL 1000W METAL HALIDE LAMP, TYPE V DISTRIBUTION AND FLAT GLASS. MOUNTING HEIGHT APPROX. 25'. SEE DETAIL.	SPAULDING	C4-III-SM-SF-M1000-480-FF (SEE NOTE #4 BELOW)	1 1000W MH REDUCED JACKET ED28 LAMP	480	POLE
BB	AREA LUMINAIRE WITH VERTICAL 400W METAL HALIDE LAMP, TYPE III DISTRIBUTION AND FLAT GLASS. MOUNTING HEIGHT APPROX. 20'. SEE DETAIL.	SPAULDING	C4-III-SM-SF-M400-480-FF (SEE NOTE #4 BELOW)	1 MH400/U/ED23-REDUCED JACKET ED28 LAMP	480	POLE
CC	AREA LUMINAIRE WITH VERTICAL 400W METAL HALIDE LAMP, TYPE V DISTRIBUTION AND FLAT GLASS. MOUNTING HEIGHT APPROX. 20'. SEE DETAIL.	SPAULDING	C4-III-SM-SF-M400-480-FF (SEE NOTE #4 BELOW)	1 MH400/U/ED23-REDUCED JACKET ED28 LAMP	480	POLE

NOTE:

- FIXTURES SPECIFIED MATCH EXISTING. NO SUBSTITUTIONS WILL BE CONSIDERED.
- PROVIDE FUSES BEHIND THE HANDHOLE FOR EACH FIXTURE. FUSES SIZED PER MANUFACTURER'S RECOMMENDATION.
- ALL NEW FIXTURE FINISHES TO MATCH EXISTING. POLE AND FIXTURE ARE SANDSTORM COLOR, FLAT NON-REFLECTIVE FINISH. POLE BASE AND FIXTURE YOKE SHALL BE DARK RED TO MATCH EXISTING EQUIPMENT AT SITE.
- 

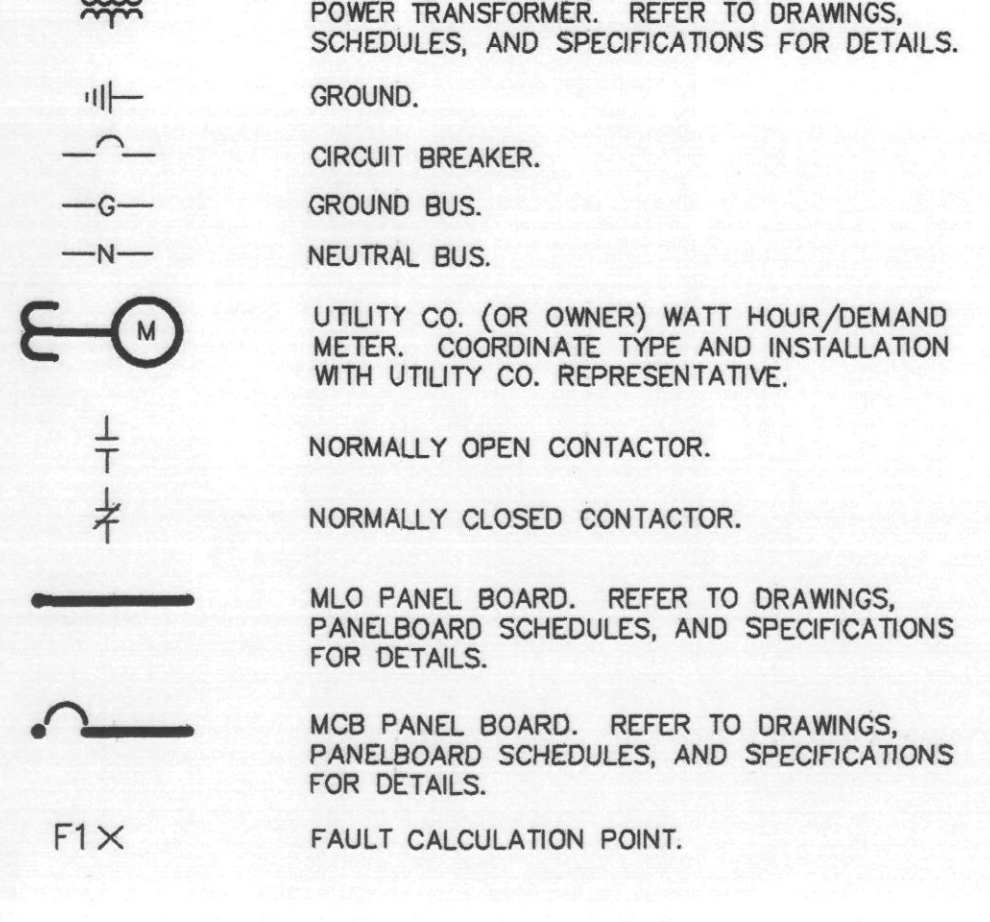


1 FIXTURE BASE DETAIL NOT TO SCALE

**NOTES:**

- THE CONTRACTOR SHALL PROVIDE FOR AND SUBMIT TO THE ENGINEER, A POLE BASE INSTALLATION DETAIL WHICH HAS BEEN PREPARED & SEALED BY A STRUCTURAL ENGINEER. THE INSTALLATION DETAIL SHALL SPECIFY EXACT POLE BASE DIMENSION, MATERIALS, ETC. ALL FIXTURE POLES AND POLE BASES SHALL BE PROVIDED AS REQUIRED FOR PROPER STRUCTURAL AND WIND LOADING SUPPORT OF 100 MPH MIN. THE INSTALLATION DETAIL SHALL BE SPECIFIC USING THE EPA FOR THE FIXTURES AND POLES BEING PROVIDED FOR THIS PROJECT.

### ONE LINE DIAGRAMS



### ABBREVIATIONS

AFF	ABOVE FINISHED FLOOR	LP	LIGHTING PANEL
AFG	ABOVE FINISHED GRADE	MH	MANHOLE
ALT	ALTERNATE	MTS	MANUAL TRANSFER SWITCH
AWG	AMERICAN WIRE GAGE	M.C.	MECHANICAL CONTRACTOR
A	AMPERE(S)	MIKE	MICROPHONE
CKT	CIRCUIT	MTR	MOTOR
CB	CIRCUIT BREAKER	MCC	MOTOR CONTROL CENTER
COND	CONDUIT	MTH	MOUNTING HEIGHT
C	COPPER	NTS	NOT TO SCALE
CU	COPPER	N.I.C.	NOT IN CONTRACT
DM	DIMMER CONTROL	OL	OVERLOAD ELEMENT
DN	DOWN	PAN	PANEL
EMT	ELECTRICAL METALLIC TUBING	PVC	POLYVINYL CHLORIDE
ER	EXISTING RELOCATED	PR1	PRIMARY
EX	EXISTING TO REMAIN	RECEPT	RECEPTACLE
GEN	GENERATOR	SEC	SECONDARY
GND	GROUND	SMR	SURFACE METAL RACEWAY
GFI	GROUND FAULT INTERRUPTER	SW	SWITCH
H.I.D.	HIGH INTENSITY DISCHARGE	TB	TERMINAL BOX
H.P.S.	HIGH PRESSURE SODIUM	TYP	TYPICAL
IMC	INTERMEDIATE METALLIC CONDUIT	XFMR	TRANSFORMER
INC	INCANDESCENT	XFR	TRANSFER
JB	JUNCTION BOX	UG	UNDERGROUND
KVAR	KILOVOLT(AMPERE)	UNO	UNLESS NOTED OTHERWISE
kVA	KILOVOLT AMPERE(S)	V	VOLT(S)
kw	KILOWATT(S)	VA	VOLTAMP(S)
		W	WATT(S)
		WP	WEATHERPROOF

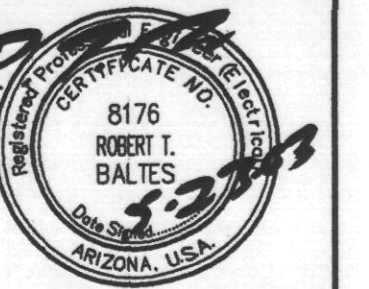
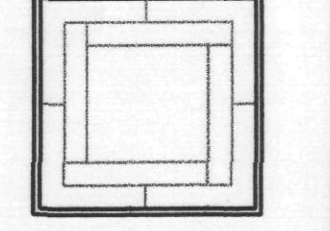
NOTE: NOT ALL SYMBOLS ARE USED ON THIS PROJECT

THESE DRAWINGS ARE DIAGRAMMATIC. THE ELECTRICAL CONTRACTOR IS REQUIRED TO PROVIDE THE NECESSARY QUANTITY OF CONDUCTORS FOR SWITCHING AS SHOWN ON THE DRAWINGS IN ORDER TO MAKE THE SYSTEM COMPLETE AND OPERATIONAL.

ALL PENETRATIONS OF FIRE RATED FLOORS OR SHAFT WALLS SHALL BE PROTECTED BY MATERIALS AND INSTALLATION DETAILS THAT CONFORM TO UNDERWRITER LABORATORIES LISTINGS FOR THROUGH PENETRATION FIRE STOP SYSTEMS. THE CONTRACTOR SHALL SUBMIT SHOP DRAWING DETAILS WHICH SHOW COMPLETE CONFORMANCE TO THE U.L. LISTING TO THE ARCHITECT/ENGINEER AND SUCH DRAWINGS SHALL BE AVAILABLE TO THE CITY INSPECTORS. THE DRAWINGS SHALL BE SPECIFIC FOR EACH PENETRATION WITH ALL VARIABLES DEFINED.

727 E. MARYLAND AVE  
Phoenix, AZ 85014  
phone: 602.266.6202  
facsimile: 602.265.6212

THE PROMENADE - PHASE II  
SCOTTSDALE, AZ  
FOR THE PERSON GROUP  
SYMBOLS AND FIXTURE SCHEDULE



03 MAY 03 CITY COMMENTS

1				
2				
3				
4				

SCHEMATIC	
DESIGN DEVELOPMENT	
CONSTRUCTION DOCUMENTS	
BID/PRICING PACKAGE	
BUILDING DEPT. APPROVAL	
DATE ISSUED	02.31.03
DRAWN BY	TCK
CHECKED BY	J. YURKUS
PROJECT NO.	97018
CADD FILE	
SCALE:	NOT TO SCALE
DRAWING NO.	

ES-O

**BVA** Bailes/Valentino Associates, Limited  
Engineering for Building Owners  
Mechanical & Electrical Consulting Engineers  
7250 N. 181st St. #102 • Phoenix, AZ 85020 • (602) 371-1333  
www.bvaeng.com E-Mail cad@bvaeng.com

DESIGNED BY: J. YURKUS  
DRAWN BY: TCK

THIS DRAWING IS AN INSTRUMENT OF SERVICE AND THE PROPERTY OF BAILES/VALENTINO ASSOCIATES LTD. THIS DRAWING MAY NOT BE REPRODUCED OR REPRODUCTION HEREOF MADE, WITHOUT THEIR WRITTEN PERMISSION. © COPYRIGHT 2001 BAILES/VALENTINO ASSOCIATES LTD. 7250 NORTH 181ST STREET, SUITE 102 PHOENIX, ARIZONA 85020 602-371-1333 FAX 602-371-9075 E-MAIL cad@bvaeng.com www.bvaeng.com