

GENERAL NOTES:

- A. PROVIDE E.I.F.S. HIGH IMPACT MESH UP TO 8'-0" A.F.F. AT GRADE LEVEL AND ALL BALCONIES.
- B. SEE FINISH & MATERIAL LEGEND FOR ALUMINUM WINDOW SYSTEM FINISHES.

KEYED NOTES:

- 1. INTEGRAL COLORED E.I.F.S.
- 2. INTEGRAL COLORED E.I.F.S. MECHANICAL SCREEN.
- 3. 1/4" MONOLITHIC, TINTED GLAZING IN PAINTED ALUMINUM FRAMING.
- 4. 1" INSULATED, BRONZE GLAZING, BUTT GLAZED.
- 5. 1" INSULATED, BRONZE SPANDREL GLAZING, BUTT GLAZED.
- 6. 1" INSULATED, TINTED GLAZING IN PAINTED ALUMINUM FRAMING.
- 7. CENTER THE CHANGE OF E.I.F.S. COLOR ON GRID LINE 7. DUPLICATE ANGLE OF MECHANICAL SCREEN.
- 8. PRE-FINISHED METAL PANEL.
- 9. STONE PANELS AND REVEALS.
- 10. E.I.F.S. EXPAN. JNTS PLACED ON COL. GRIDLINES.
- 11. PAINTED METAL CHANNEL SCREEN.
- 12. METAL RAILING.
- 13. BALCONY DOOR.
- 14. PRE-FORMED FASCIA.
- 15. STONE/E.I.F.S. CLAD COLUMN.
- 16. FUTURE STEEL FRAME SIGNAGE - SEE A-401.
- 17. MECHANICAL EQUIPMENT BEHIND WALL.
- 18. LIGHT FIXTURE.
- 19. TEMPERED GLASS-EXTEND MIN 24" EACH SIDE OF DOOR OPENING & FULL HEIGHT OF DOOR
- 20. STONE TO FOLLOW SLOPED PAVING WITH 1/2" SEALANT JOINT.

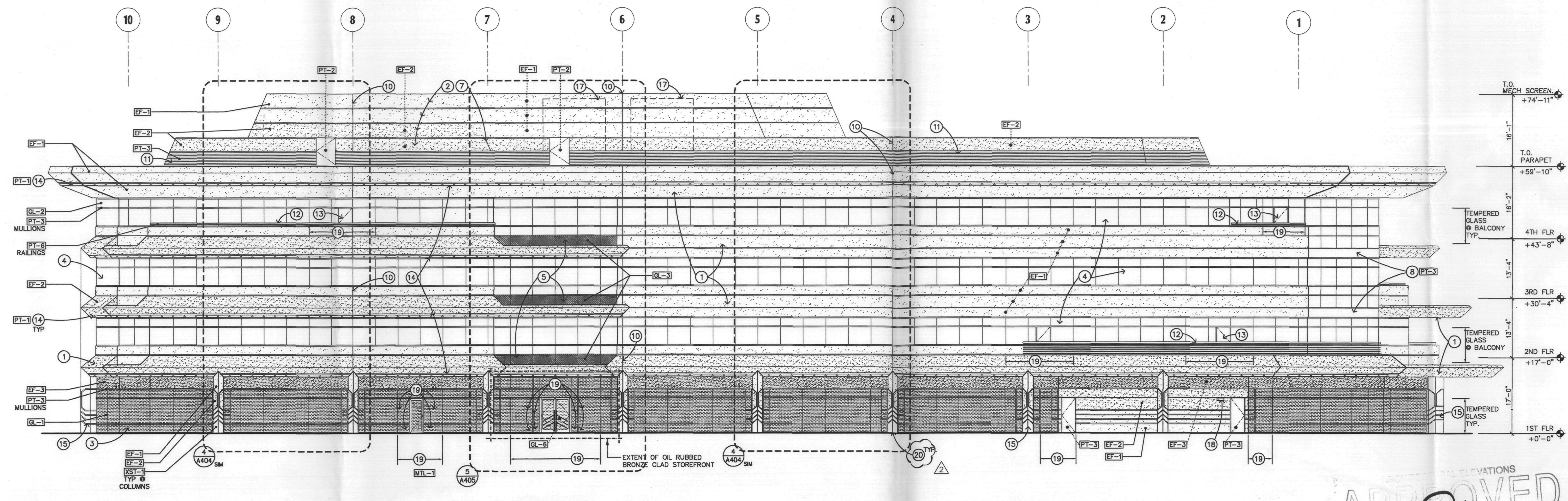
HATCHING LEGEND:

- GLAZING**
- GL-1 Manufacturer: PPG Solux
Thickness: 3/8" monolithic
Color: Green
Location: 1st floor
 - GL-2 Manufacturer: Viracon
Thickness: 1" insulated: 1/4" Bronze, HS (Reference color)
1/2" Air Space
1/4" Clear, AN
Color: Bronze reflective VX4-CA #2 HS
Location: Vision glass at Office floors 2 thru 4 and office at 1st floor
 - GL-3 Manufacturer: Viracon
Thickness: 1" insulated: 1/4" Bronze, HS (Reference color)
1/2" Air Space
1/4" Clear, HS (Reference color)
Color: Bronze reflective VX4-CA #2 HS with SPD/PAS51 V948LF (MED GR) #4 HS
Location: Spandrel Glass
 - GL-4 Manufacturer: PPG Solux
Thickness: 1" insulated: 1/4" Green, HS
1/2" Air Space
1/4" Clear, HS (With opaque spandrel film)
Color: Green to match GL-1
Location: Spandrel Glass 1st floor

- E.I.F.S.**
- EF-1 Finish: Fine finish with 1mm aggregate
Integral Color: To match PT-3, Frazee Desert Tumbleweed, 8723M
Location: EIFS field
 - EF-2 Finish: Fine finish with 1mm aggregate
Integral Color: To match PT-2, Frazee Bark Mulch, 8734M
Location: EIFS Projections
 - EF-3 Finish: Fine finish with 1mm aggregate
Integral Color: To match PT-5, Frazee Wild Country, 8735D
Location: Office 1st floor soffit headers

FINISH LEGEND

- XST-1 Stone:
Supplier: Architectural Products Group
Material: Granite, Glialo Veneziano Red Vein Cut
Finish: Polished
Location: Exterior Columns
- XST-2 Stone:
Supplier: Architectural Products Group
Material: Granite, Glialo Veneziano Red Vein Cut
Finish: Brushed
Location: Exterior columns
- PT-1 Manufacturer:
Color: Faux Copper Finish
Number: Custom color
Finish: Special
Location: Preformed fascia accent
- PT-2 Manufacturer: Frazee
Color: Bark Mulch
Number: 8734M
Finish: 203 Flat
Location: EIFS projection integral color - see EF-2
- PT-3 Manufacturer: Frazee
Color: Desert Tumbleweed
Number: 8723M
Finish: 203 Flat
Location: Exterior mullions & EIFS field integral color - see EF-1
- PT-4 Manufacturer: Frazee
Color: Light Antique
Number: CWD49W
Finish: 203 Flat
Location: Typical floor elevator lobby, restrooms, floors 2-4
- PT-5 Manufacturer: Frazee
Color: Wild Country
Number: 8735D
Finish: 203 Flat
Location: EIFS 1st floor soffit header integral color - see EF-3
- PT-6 Manufacturer: Frazee
Color: Aqua Sea
Number: 8075D
Finish: 121 Semi-Gloss
Location: Metal Accents and railing

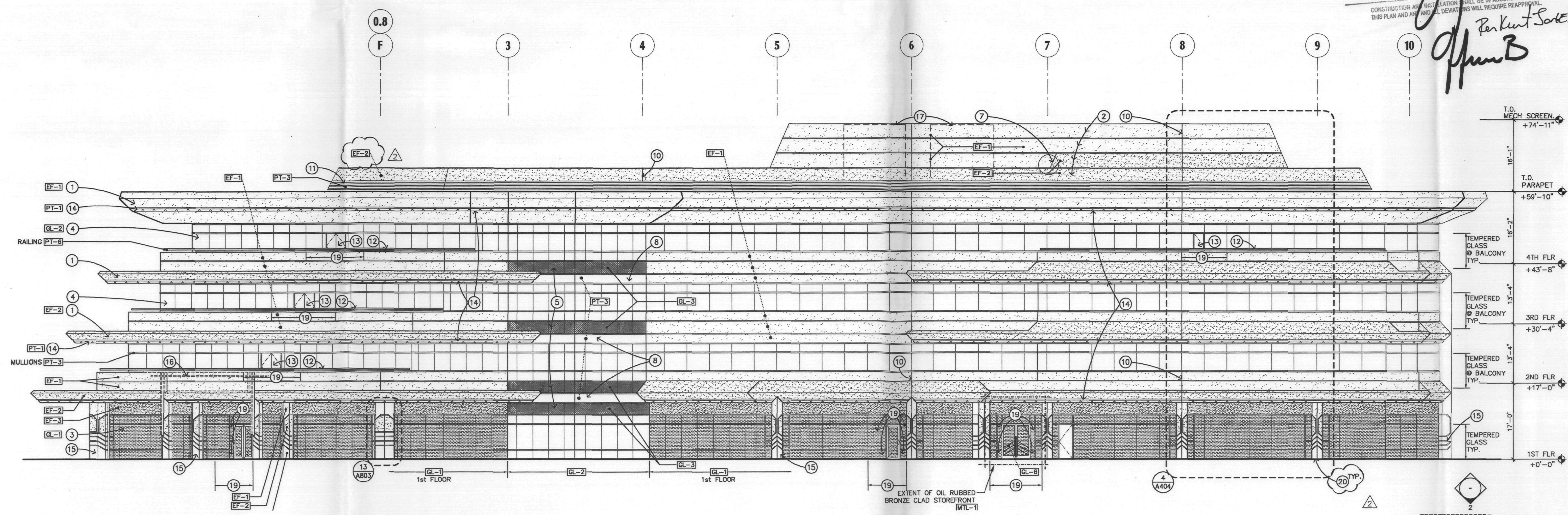


02 EAST ELEVATION

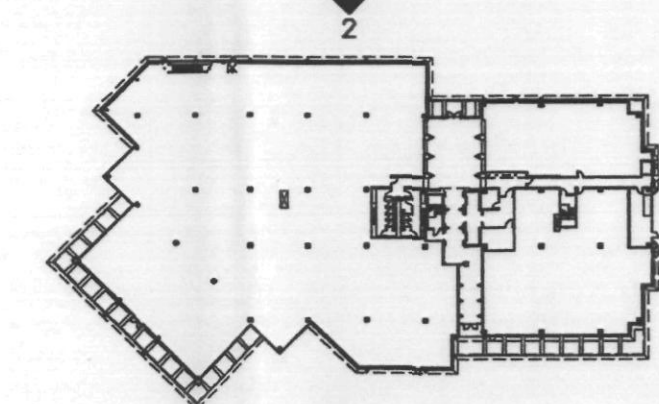
APPROVED

DATE 9-20-01

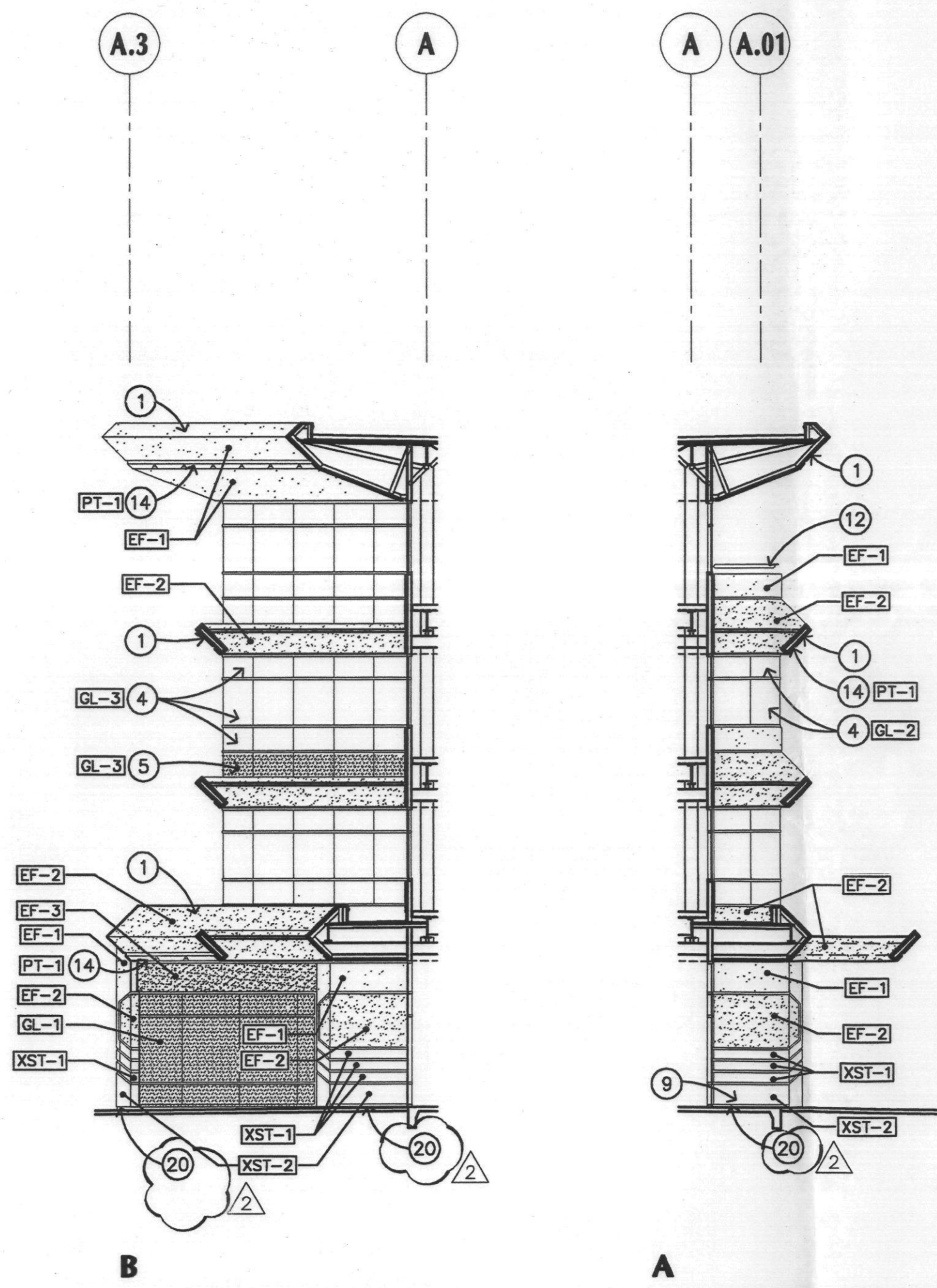
Perkins + Rowe



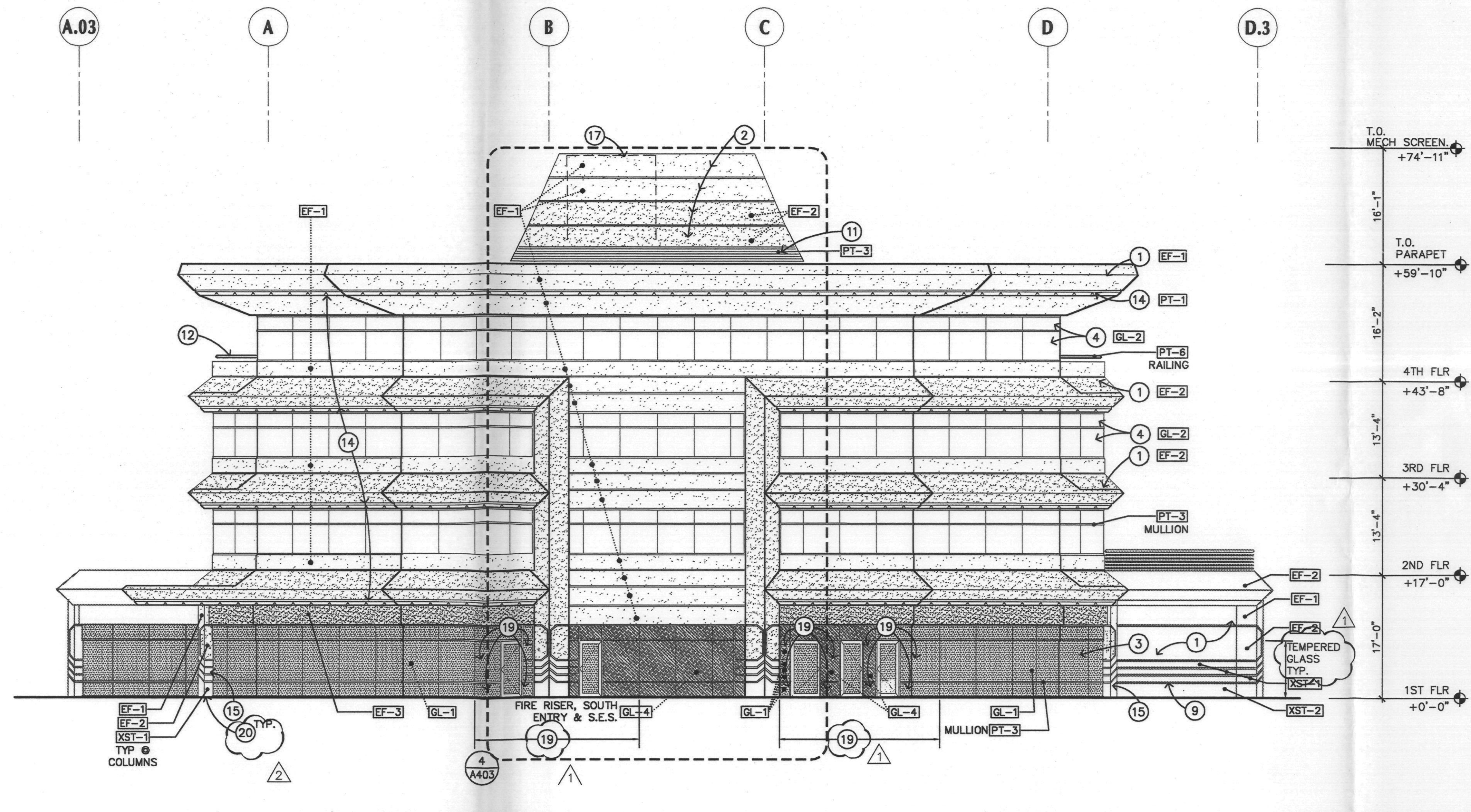
01 WEST ELEVATION



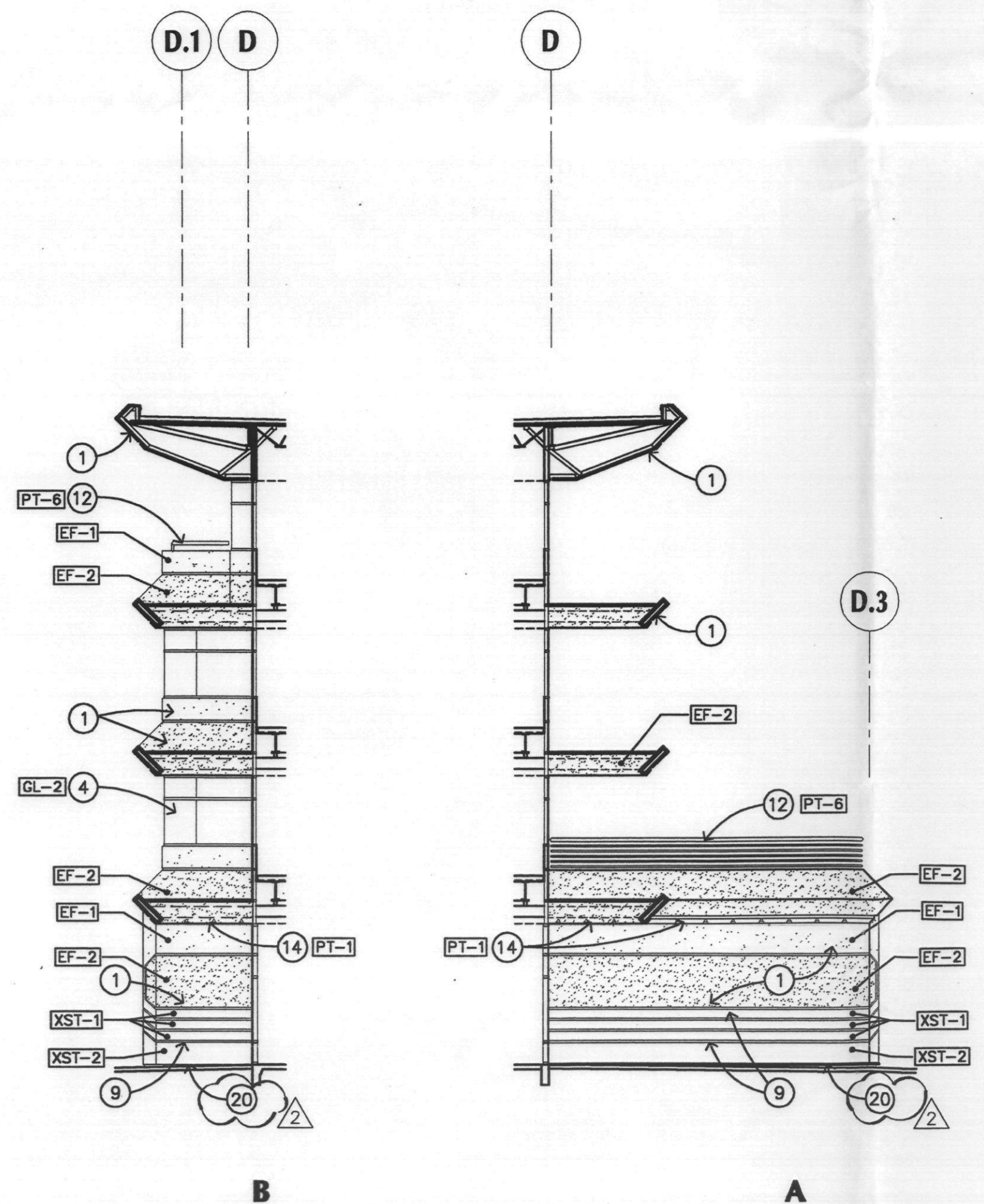
KEY PLAN



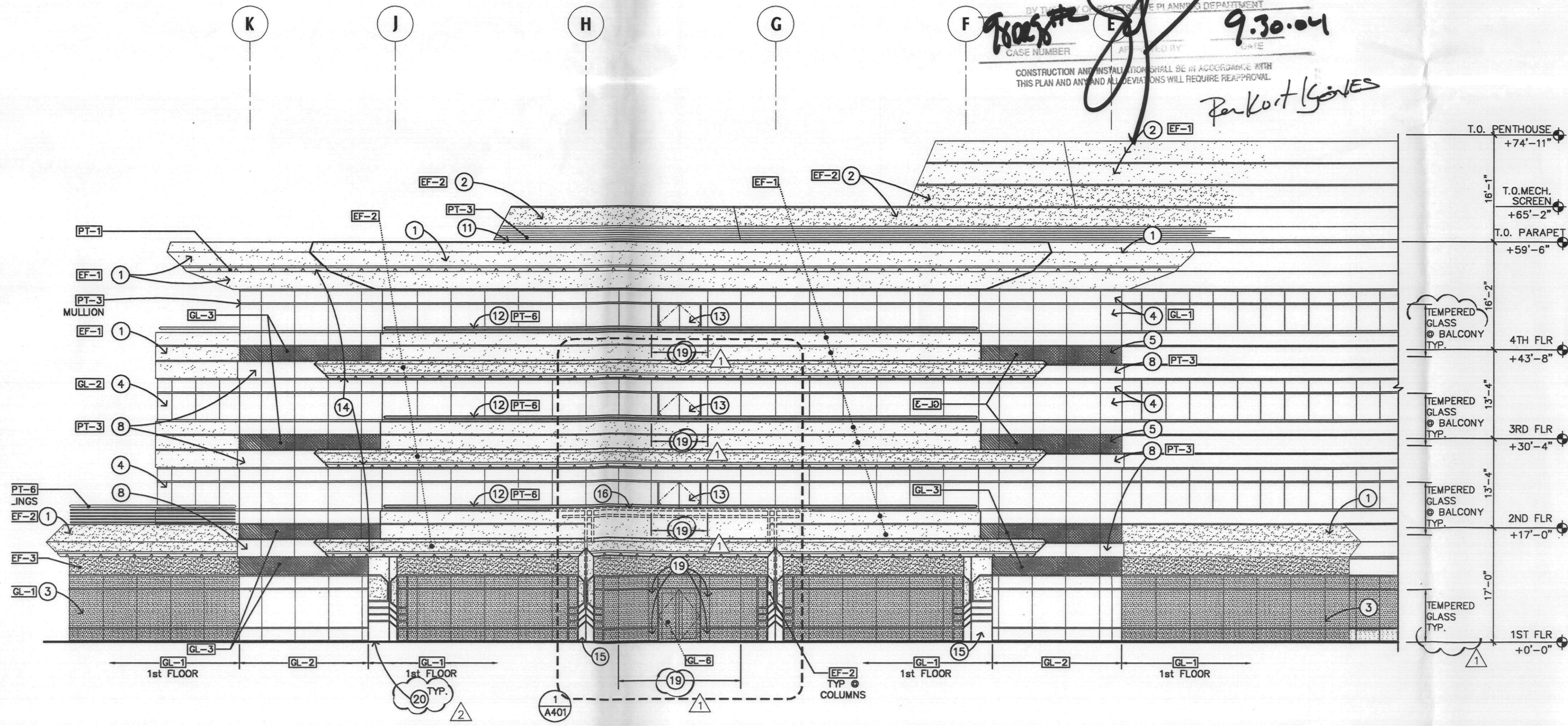
04 SECONDARY ENTRY ELEVATIONS 3/32"=1'-0"



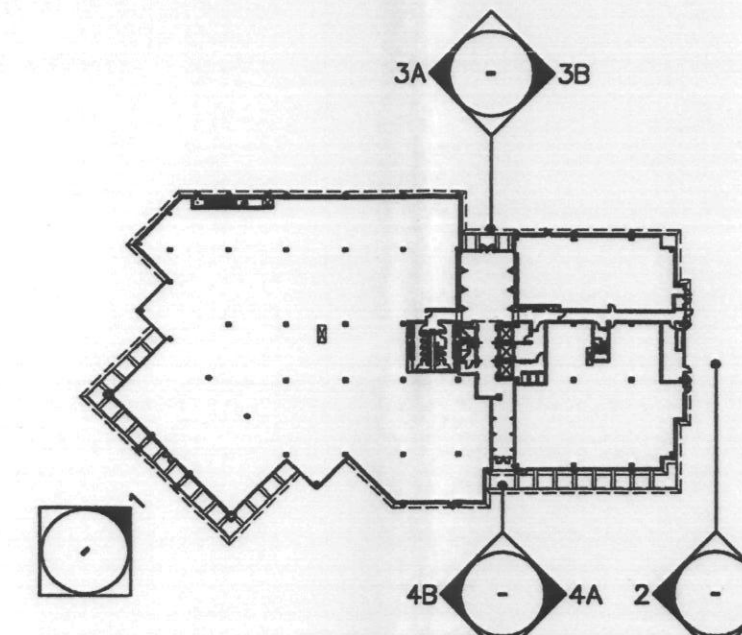
02 SOUTH ELEVATION 3/32"=1'-0"



03 PRIMARY ENTRY ELEVATIONS 3/32"=1'-0"



01 NORTH ELEVATION 3/32"=1'-0"



KEY PLAN

GENERAL NOTES:

- A. PROVIDE E.I.F.S. HIGH IMPACT MESH UP TO 8'-0" A.F.F. AT GRADE LEVEL AND ALL BALCONIES.
- B. SEE FINISH & MATERIAL LEGEND FOR ALUMINUM WINDOW SYSTEM FINISHES.

KEYED NOTES:

- INTEGRAL COLORED E.I.F.S.
- INTEGRAL COLORED E.I.F.S. MECHANICAL SCREEN.
- 1/4" MONOLITHIC, TINTED GLAZING IN PAINTED ALUMINUM FRAMING.
- 1" INSULATED, BRONZE GLAZING, BUTT GLAZED.
- 1" INSULATED, BRONZE SPANDREL GLAZING, BUTT GLAZED.
- 1" INSULATED, TINTED GLAZING IN PAINTED ALUMINUM FRAMING.
- CENTER THE CHANGE OF E.I.F.S. COLOR ON GRID LINE 7. DUPLICATE ANGLE OF MECHANICAL SCREEN.
- PRE-FINISHED METAL PANEL.
- STONE PANELS AND REVEALS.
- E.I.F.S. EXPAN UNITS PLACED ON COL. GRIDLINES.
- PAINTED METAL CHANNEL SCREEN.
- METAL RAILING.
- BALCONY DOOR.
- PRE-FORMED FASCIA.
- STONE/E.I.F.S. CLAD COLUMN.
- FUTURE STEEL FRAME SIGNAGE - SEE A-401.
- MECHANICAL EQUIPMENT BEHIND SCREEN WALL.
- LIGHT FIXTURE.
- TEMPERED GLASS-EXTEND MIN 24" EACH SIDE OF DOOR OPENING & FULL HEIGHT OF DOOR.
- STONE TO FOLLOW SLOPED PAVING WITH 1/2" SEALANT JOINT.

HATCHING LEGEND:

- GLAZING**
- GL-1 Manufacturer: PPG Solex
Thickness: 3/4" monolithic
Color: Green
Location: 1st floor
 - GL-2 Manufacturer: Viracon
Thickness: 1" insulated: 1/4" Bronze, HS (Reference color)
1/2" Air Space
1/4" Clear, AN
Color: Bronze reflective VX4-CA #2 HS
Location: Vision glass at Office floors 2 thru 4 and some at 1st floor
 - GL-3 Manufacturer: Viracon
Thickness: 1" insulated: 1/4" Bronze, HS (Reference color)
1/2" Air Space
1/4" Clear, HS (Reference color)
Color: Bronze reflective VX4-CA #2 HS with SPD/PASS1 V848LF (MED GR) #4 HS
Location: Spandrel Glass
 - GL-4 Manufacturer: PPG Solex
Thickness: 1" insulated: 1/4" Green, HS
1/2" Air Space
1/4" Clear, HS (With opaque spandrel film)
Color: Green to match GL-1
Location: Spandrel Glass 1st floor

E.I.F.S.

- EF-1 Finish: Fine finish with 1mm aggregate
Integral Color: To match PT-3, Frazee Desert Tumbleweed, 8723M
Location: EIFS field
- EF-2 Finish: Fine finish with 1mm aggregate
Integral Color: To match PT-2, Frazee Bark Mulch, 8734M
Location: EIFS Projections
- EF-3 Finish: Fine finish with 1mm aggregate
Integral Color: To match PT-5, Frazee Wild Country, 8735D
Location: Office 1st floor soffit headers

FINISH LEGEND

- XST-1 Stone:
Supplier: Architectural Products Group
Material: Granite, Giallo Veneziano Red Vein
Finish: Polished
Location: Exterior Columns
- XST-2 Stone:
Supplier: Architectural Products Group
Material: Granite, Giallo Veneziano Red Vein
Cut: Finish: Brushed
Location: Exterior columns
- PT-1 Manufacturer:
Color: Faux Copper Finish
Number: Custom color
Finish: Special
Location: Preformed fascia accent
- PT-2 Manufacturer: Frazee
Color: Bark Mulch
Number: 8734M
Finish: 203 Flat
Location: EIFS projection integral color - see EF-2
- PT-3 Manufacturer: Frazee
Color: Desert Tumbleweed
Number: 8723M
Finish: 203 Flat
Location: Exterior mullions & EIFS field integral color - see EF-1
- PT-4 Manufacturer: Frazee
Color: Light Antique
Number: CW049W
Finish: 203 Flat
Location: Typical floor elevator lobby, restrooms, floors 2-4
- PT-5 Manufacturer: Frazee
Color: Wild Country
Number: 8735D
Finish: 203 Flat
Location: EIFS 1st floor soffit header integral color - see EF-3
- PT-6 Manufacturer: Frazee
Color: Aquo Sea
Number: 8075D
Finish: 124 Semi-Gloss
Location: Metal Accents and railing

DFD CornoyerHedrick

2425 E. Camelback Rd.
Suite 400
Phoenix, Arizona
85016

phone 602.381.4848
fax 602.381.4844
www.dfhch.com

THE PROMENADE
ARCHITECTS

OFFICE BUILDING - B
SEC FRANK LLOYD BOULEVARD
AND SCOTTSDALE ROAD
SCOTTSDALE, AZ

APPROVED
0348
STEVEN
BASSETT
ARCHITECT
ARIZONA U.S.A.

DATE ISSUED 14 JUN 04
DRAWN BY RVG
CHECKED BY L.E.
PROJECT NO. 001730
CADD FILE A-302
DRAWING NO. A-302
EXTERIOR ELEVATIONS
SCALE: 3/32" = 1'-0"