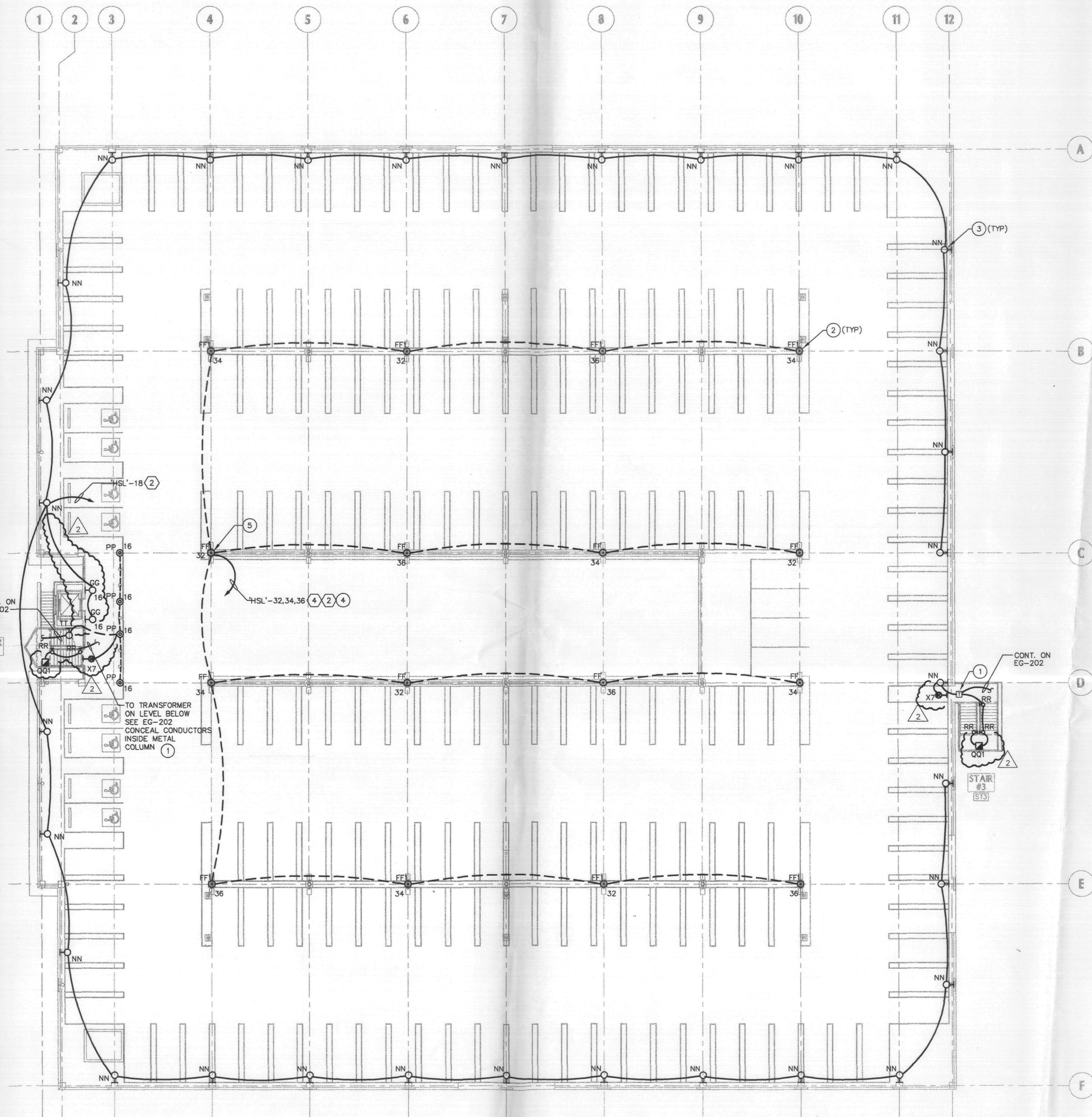


THIS DRAWING IS AN INSTRUMENT OF SERVICE AND THE PROPERTY OF BVA ARCHITECTURE AND SHALL REMAIN THEIR PROPERTY. THE USE OF THIS DRAWING SHALL BE RESTRICTED TO THE ORIGINAL USE FOR WHICH IT WAS PREPARED AND PRODUCTION THEREOF IS EXPRESSLY LIMITED TO SUCH USE. THESE REPRESENTATIONS AND PRODUCTIONS THEREOF IS EXPRESSLY LIMITED TO SUCH USE. THESE REPRESENTATIONS AND PRODUCTIONS THEREOF IS EXPRESSLY LIMITED TO SUCH USE.



KEY NOTES

- 1 300VA, 277V/12V TRANSFORMER WITH BREAKER ON SECONDARY. Q-TRAN MODEL QX-300MY-12-1X20-277V OR APPROVED EQUAL MOUNT IN ACCESSIBLE LOCATION ON UNDERSIDE OF STAIR LANDING. WIRE 12V SECONDARY TO TYPE 'RR' FIXTURES AS INDICATED ON PLANS VIA #2 STRANDED CU CONDUCTORS. CONCEAL CONDUCTORS IN STEEL STRUCTURAL COLUMN WHERE 'RR' FIXTURES ARE LOCATED ON VERTICAL RUNS. VERIFY LOCATION AND MOUNTING HEIGHT OF 'RR' FIXTURES PRIOR TO ROUGH-IN.
- 2 SEE STRUCTURAL DRAWINGS FOR BASE DETAIL.
- 3 MOUNT 'NN' FIXTURES FULLY RECESSED IN WALL WITH THE TOP OF THE FIXTURE 6" FROM THE TOP OF THE WALL.
- 4 CIRCUITS 34 AND 36 ON CONTROL ZONE 2, CIRCUIT 32 ON CONTROL ZONE 4.

PARKING GARAGE LIGHTING PLAN 3rd LEVEL
1/16"=1'-0"

APPROVED
FINAL PLANS PLANNING
6.10.03
DATE: 6.10.03
PROJECTED BY: [Signature]

ARIZONA REVISED STATUTES 32-1129.01.
NOTICE OF EXTENDED CERTIFICATION AND APPROVAL PERIOD PROVISION.
This contract allows the owner to certify and approve billings and estimates within 30 days after the billings and estimates are received from the contractor.
NOTICE OF EXTENDED PAYMENT PROVISION.
This contract allows the owner to make payments within 30 days after certification and approval of billings and estimates.

BVA Baltes/Valentino Associates, Limited
Mechanical & Electrical Consulting Engineers
7250 N. 16th St. #102 • Phoenix, AZ 85020 • (602) 971-1333
www.bvaeng.com E-Mail: cad@bvaeng.com

DESIGNED BY: J. YURKUS
DRAWN BY: CPA

THIS DRAWING IS AN INSTRUMENT OF SERVICE AND THE PROPERTY OF BALTES/VALENTINO ASSOCIATES LTD. THIS DRAWING MAY NOT BE REPRODUCED OR REPRODUCTION HEREOF USED, WITHOUT THE WRITTEN PERMISSION OF BALTES/VALENTINO ASSOCIATES LTD.
7250 NORTH 16TH STREET, SUITE 102 PHOENIX, ARIZONA 85020
802-971-1333 FAX 802-971-0815
C-MAIL: cad@bvaeng.com web:bvaeng.com

THE PROMENADE

PARKING GARAGE
SEC FRANK LLOYD BOULEVARD AND SCOTTSDALE ROAD
SCOTTSDALE, AZ

DATE ISSUED: 31 JAN 03
DRAWN BY: CPA
CHECKED BY: J. YURKUS
PROJECT NO: 001730
CADD FILE

DRAWING NO. **EG-203**
LTG PLAN 3RD LEVEL
SCALE: 1/16"=1'-0"