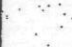
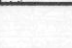
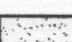


A. $0'-0''=1507.5$, SEE CIVIL PLANS

A. $0'-0''=1507.5$, SEE CIVIL PLANS

1. PRE-CAST CONCRETE COLUMN-PAINTED WITH REVEALS
2. PRE-CAST CONCRETE SPANDREL PANEL-PAINTED WITH REVEALS
3. RETAINING WALL - SEE STRUCTURAL DRAWINGS
4. CONCRETE SHEAR WALL - PAINTED WITH REVEALS
5. HEIGHT LIMIT BAR - SEE 5A/AG701
6. LIGHT FIXTURE ON POLE - PAINT PT-3
7. PAINTED METAL STAIR
8. LOWER LEVEL BEYOND
9. EIFS CORNICE
10. PAINTED METAL RAIL
11. GARAGE EXHAUST SHAFT
12. PRECAST CONCRETE MEDALLION
13. CMU WALL WITH EIFS

E.I.F.S.

	<p>EF-1 Finish: Fine finish with 1mm aggregate</p> <p>Integral Color: To match PT-3, Frozee Desert Tumbledweed, 8723PM</p> <p>Location: EIFS field</p>
	<p>EF-2 Finish: Fine finish with 1mm aggregate</p> <p>Integral Color: To match PT-2, Frozee Bark Mulch, 8734M</p> <p>Location: EIFS Projections</p>
	<p>EF-3 Finish: Fine finish with 1mm aggregate</p> <p>Integral Color: To match PT-5, Frozee Wild Country, 8735D</p> <p>Location: Office 1st floor soffit headers</p>

PT-1 Manufacturer: Color: Faux Copper Finish
Number: Custom color
Finish: Special
Location: Preformed fascia accent

PT-2 Manufacturer: Frazee Color: Bark Mulch
Number: 8734M
Finish: 203 Flat
Location: EIFS projection integral color – see EF-2

PT-3 Manufacturer: Frazee Color: Desert Tumbledown
Number: 9723M
Finish: 203 Flat
Location: Exterior mullions & EIFS field integral color – see ED-3-D

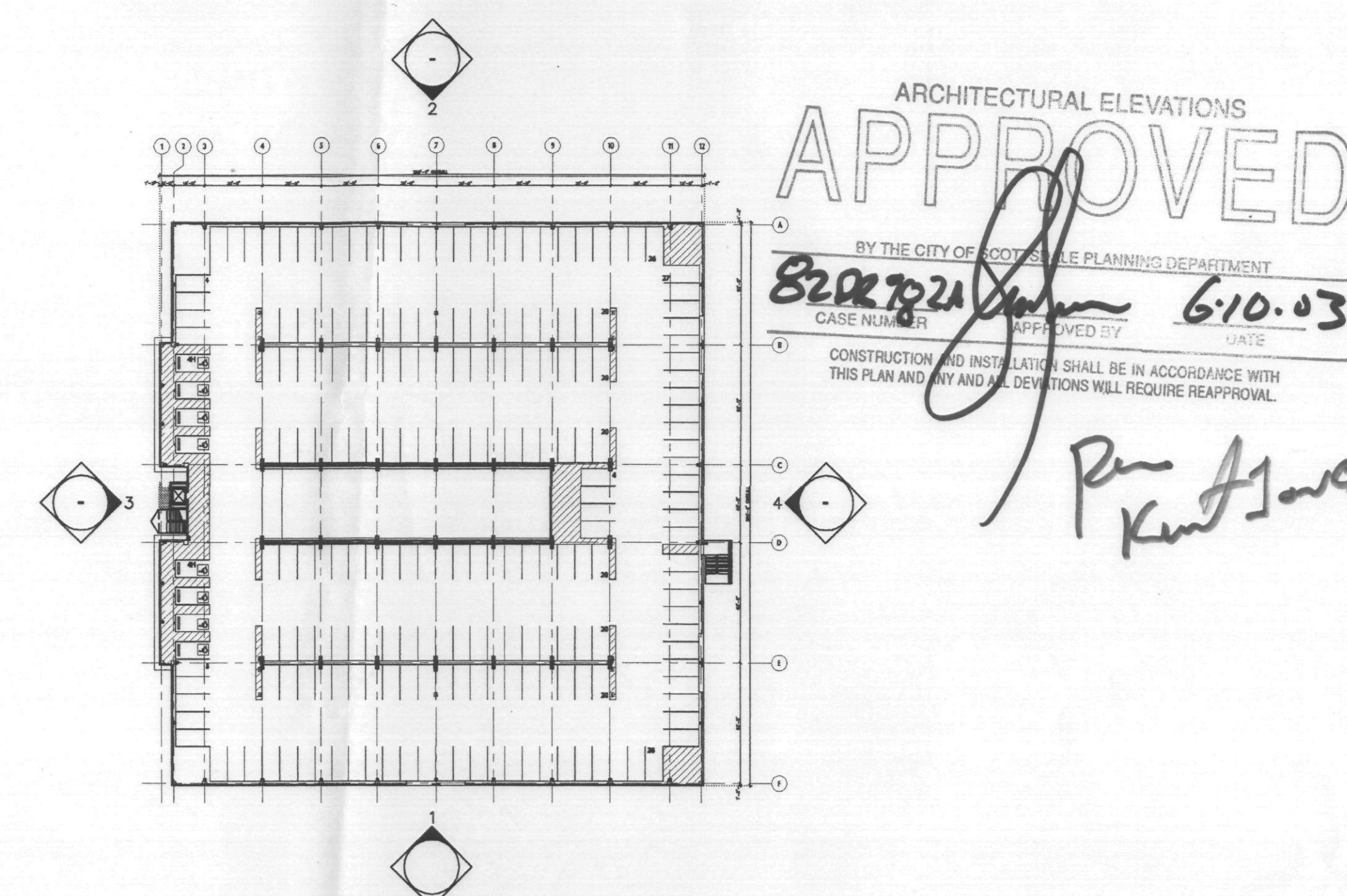
PT-5 Manufacturer: Frazee Color: Wild Country
Number: 8735D
Finish: 203 Flat
Location: EIFS 1st floor soffit header integral color – see EF-3

PT-6 Manufacturer: Frazee Color: Aqua Sea
Number: 8075D
Finish: 124 Semi-Gloss
Location: Metal Accents and railing


PT-7 Manufacturer: ICI Color: Red Clay
Number: 213
Finish: Flat
Location: Precast accent diamond


$$1/16^n = 1' - 0^n$$
 $1/16^{\text{th}} = 1' - 0''$ 

1/16"=1'-0"

 $1/16'' = 1'-0''$ 

KEY PLAN



PARKING GARAGE
SEC FRANK LLOYD BOULEVARD
AND SCOTTSDALE ROAD
SCOTTSDALE, AZ

Professional Engineer Seal for Steven Bassett, State of Arizona, No. 03348, dated 5-21-03.

08 MAY 03 City Comments

	SCHEMATIC
	DESIGN DEVELOPMENT
	CONSTRUCTION DOCUMENTS
	BID/PRICING PACKAGE
✓	BUILDING DEPT. APPROVAL

DATE ISSUED 24 JAN 03

DRAWN BY 53

EZ

CHECKED BY BY

PROJECT NO. 001730

CADD FILE

© 1999 by The McGraw-Hill Companies, Inc.

DRAWING NO.

AC 201

AG-301

BUILDING

BUILDING ELEVATIONS

ELEVATIONS

SCALE: 1/16"=1'-0"

