

GENERAL NOTES:

- A. PROVIDE E.I.F.S. HIGH IMPACT MESH UP TO 8'-0" A.F.F. AT GRADE LEVEL AND ALL BALCONIES.
- B. SEE FINISH & MATERIAL LEGEND FOR ALUMINUM WINDOW SYSTEM FINISHES.

KEYED NOTES:

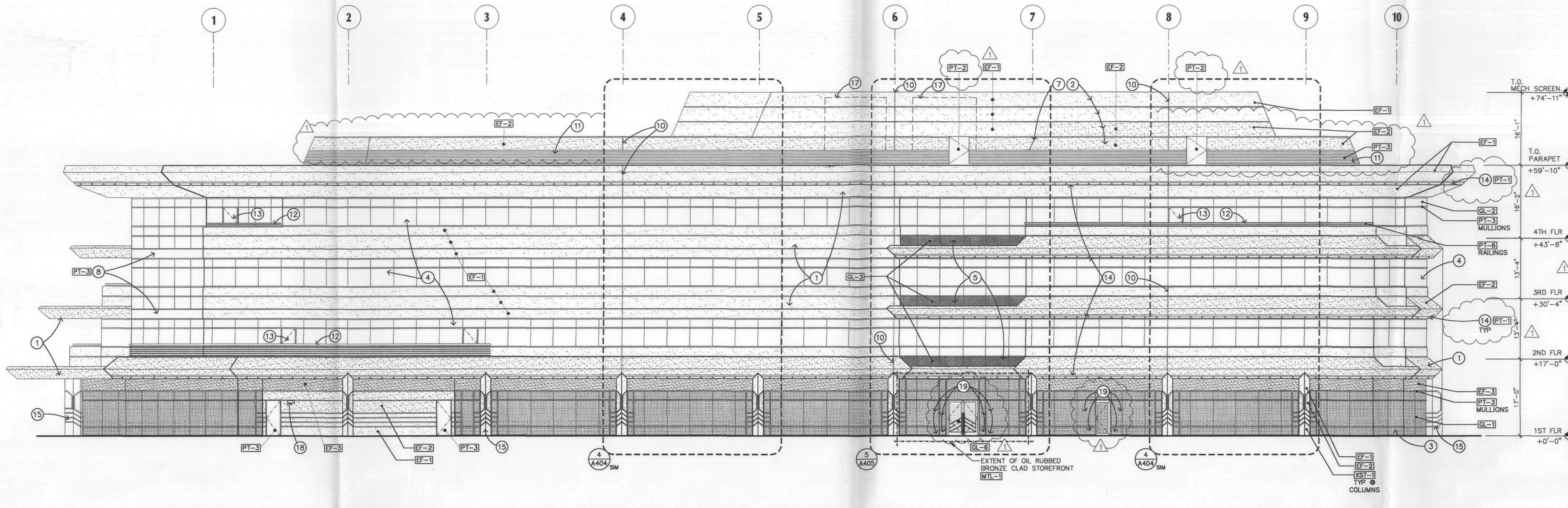
- 1. INTEGRAL COLORED E.I.F.S.
- 2. INTEGRAL COLORED E.I.F.S. MECHANICAL SCREEN.
- 3. 1/4" MONOLITHIC, TINTED GLAZING IN PAINTED ALUMINUM FRAMING.
- 4. 1" INSULATED, BRONZE GLAZING, BUTT GLAZED.
- 5. 1" INSULATED, BRONZE SPANDREL GLAZING, BUTT GLAZED.
- 6. 1" INSULATED, TINTED GLAZING IN PAINTED ALUMINUM FRAMING.
- 7. CENTER THE CHANGE OF E.I.F.S. COLOR ON GRID LINE 7. DUPLICATE ANGLE OF MECHANICAL SCREEN.
- 8. PRE-FINISHED METAL PANEL.
- 9. STONE PANELS AND REVEALS.
- 10. E.I.F.S. EXPAN. JNITS PLACED ON COL. GRIDLINES.
- 11. PAINTED METAL CHANNEL SCREEN.
- 12. METAL RAILING.
- 13. BALCONY DOOR.
- 14. PRE-FORMED FASCIA.
- 15. STONE/E.I.F.S. CLAD COLUMN.
- 16. FUTURE STEEL FRAME SIGNAGE - SEE A-401.
- 17. MECHANICAL EQUIPMENT BEHIND SCREEN WALL.
- 18. LIGHT FIXTURE.
- 19. TEMPERED GLASS-EXTEND MIN 24" EACH SIDE OF DOOR OPENING & FULL HEIGHT OF DOOR

HATCHING LEGEND:

- GLAZING**
- GL-1 Manufacturer: PPG Solex
Thickness: 1/4" monolithic
Color: Green
Location: 1st floor
 - GL-2 Manufacturer: Viracon
Thickness: 1" insulated: 1/4" Bronze, HS (Reference color)
1/2" Air Space
1/4" Clear, AN
Color: Bronze reflective VX4-CA #2 HS
Location: Vision glass at Office floors 2 thru 4 and some at 1st floor
 - GL-3 Manufacturer: Viracon
Thickness: 1" insulated: 1/4" Bronze, HS (Reference color)
1/2" Air Space
1/4" Clear, HS (Reference color)
Color: Bronze reflective VX4-CA #2 HS with SPD/PASS1 V948LF (MED GRV) #4 HS
Location: Spandrel Glass
 - GL-4 Manufacturer: PPG Solex
Thickness: 1" insulated: 1/4" Green, HS
1/2" Air Space
1/4" Clear, HS (With opaque spandrel film)
Color: Green to match GL-1
Location: Spandrel Glass 1st floor
- E.I.F.S.**
- EF-1 Finish: Fine finish with 1mm aggregate
Integral Color: To match PT-3, Frazee Desert Turnleweed, 8723M
Location: EIFS field
 - EF-2 Finish: Fine finish with 1mm aggregate
Integral Color: To match PT-2, Frazee Bark Mulch, 8734M
Location: EIFS Projections
 - EF-3 Finish: Fine finish with 1mm aggregate
Integral Color: To match PT-5, Frazee Wild Country, 8735D
Location: Office 1st floor soffit headers

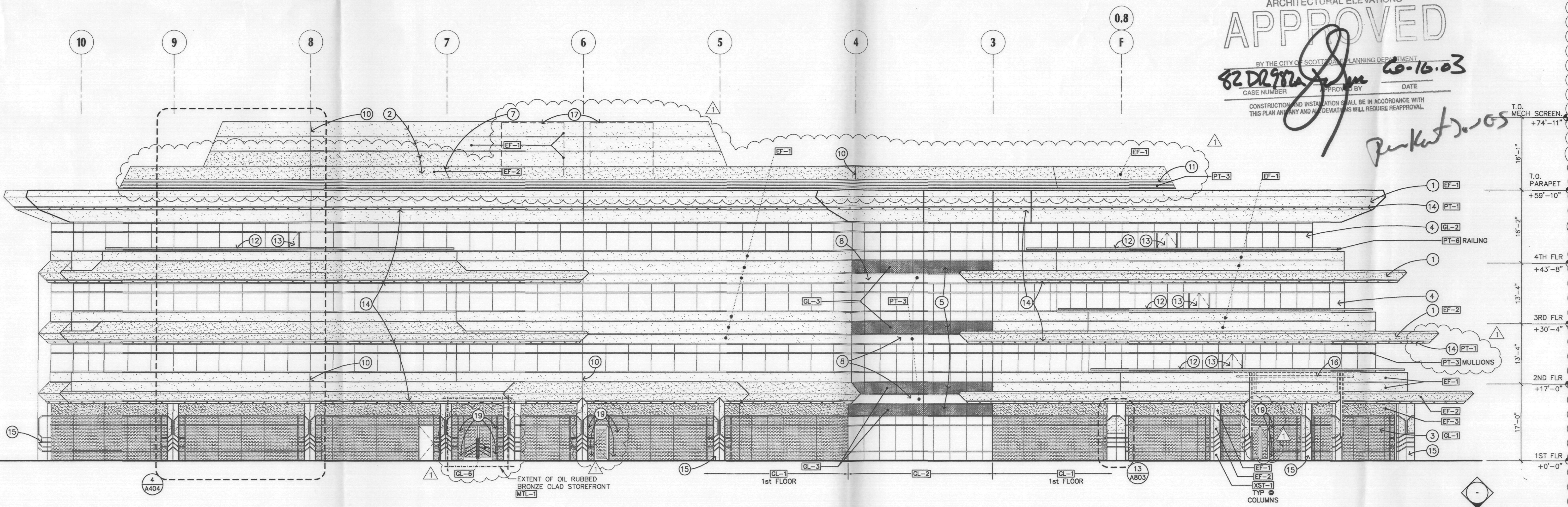
FINISH LEGEND

- XST-1 Stone:
Supplier: Architectural Products Group
Material: Granite, Giallo Veneziano Red Vein
Cut: Polished
Location: Exterior Columns
- XST-2 Stone:
Supplier: Architectural Products Group
Material: Granite, Giallo Veneziano Red Vein
Cut: Brushed
Location: Exterior columns
- PT-1 Manufacturer:
Color: Faux Copper Finish
Number: Custom color
Finish: Special
Location: Performed fascia accent
- PT-2 Manufacturer: Frazee
Color: Bark Mulch
Number: 8734M
Finish: 203 Flat
Location: EIFS projection integral color - see EF-2
- PT-3 Manufacturer: Frazee
Color: Desert Turnleweed
Number: 8723M
Finish: 203 Flat
Location: Exterior mullions & EIFS field integral color - see EF-1
- PT-4 Manufacturer: Frazee
Color: Light Antique
Number: CND4SW
Finish: 203 Flat
Location: Typical floor elevator lobby, restrooms, floors 2-4
- PT-5 Manufacturer: Frazee
Color: Wild Country
Number: 8735D
Finish: 203 Flat
Location: EIFS 1st floor soffit header integral color - see EF-3
- PT-6 Manufacturer: Frazee
Color: Aqua Sea
Number: 8075D
Finish: 124 Semi-Glass
Location: Metal Accents and railing



02 WEST ELEVATION

3/32"=1'-0"



01 EAST ELEVATION

3/32"=1'-0"

ARCHITECTURAL ELEVATIONS
APPROVED
BY THE CITY OF SCOTTSDALE PLANNING DEPARTMENT
82 D2972
DATE 6-16-03

CASE NUMBER PROJECT BY DATE
CONSTRUCTION AND INSTALLATION SHALL BE IN ACCORDANCE WITH THIS PLAN AND ANY AND ALL COMMENTS WILL REQUIRE REAPPROVAL.

Perkins 3-05

THE PROMENADE
ARCHITECTS

OFFICE BUILDING - A
SEC FRANK LLOYD BOULEVARD
AND SCOTTSDALE ROAD
SCOTTSDALE, AZ



DATE ISSUED 24 JAN 03
DRAWN BY RVG
CHECKED BY L.E.
PROJECT NO. 001730
CADD FILE A-301

SCHEMATIC
DESIGN DEVELOPMENT
CONSTRUCTION DOCUMENTS
BID/PRICING PACKAGE
BUILDING DEPT. APPROVAL

A-301
EXTERIOR ELEVATIONS
SCALE 3/32" = 1'-0"

GENERAL NOTES:

- A. PROVIDE E.I.F.S. HIGH IMPACT MESH UP TO 8'-0" A.F.F. AT GRADE LEVEL AND ALL BALCONIES.
- B. SEE FINISH & MATERIAL LEGEND FOR ALUMINUM WINDOW SYSTEM FINISHES.

KEYED NOTES:

- INTEGRAL COLORED E.I.F.S.
- INTEGRAL COLORED E.I.F.S. MECHANICAL SCREEN.
- 1/4" MONOLITHIC, TINTED GLAZING IN PAINTED ALUMINUM FRAMING.
- 1" INSULATED, BRONZE GLAZING, BUTT GLAZED.
- 1" INSULATED, BRONZE SPANDREL GLAZING, BUTT GLAZED.
- 1" INSULATED, TINTED GLAZING IN PAINTED ALUMINUM FRAMING.
- CENTER THE CHANGE OF E.I.F.S. COLOR ON GRID LINE 7. DUPLICATE ANGLE OF MECHANICAL SCREEN.
- PRE-FINISHED METAL PANEL.
- STONE PANELS AND REVEALS.
- E.I.F.S. EXPAN. JNTS PLACED ON COL. GRIDLINES.
- PAINTED METAL CHANNEL SCREEN.
- METAL RAILING.
- BALCONY DOOR.
- PRE-FORMED FASCIA.
- STONE/E.I.F.S. CLAD COLUMN.
- FUTURE STEEL FRAME SIGNAGE - SEE A-401.
- MECHANICAL EQUIPMENT BEHIND SCREEN WALL.
- LIGHT FIXTURE.
- TEMPERED GLASS-EXTEND MIN 24" EACH SIDE OF DOOR OPENING & FULL HEIGHT OF DOOR

HATCHING LEGEND:

- GLAZING**
- GL-1 Manufacturer: PPG Solex
Thickness: 3/4" monolithic
Color: Green
Location: 1st floor
 - GL-2 Manufacturer: Viracon
Thickness: 1" insulated: 1/4" Bronze, HS (Reference color)
1/2" Air Space
1/4" Clear, AN
Color: Bronze reflective VX4-CA #2 HS
Location: Vision glass at Office floors 2 thru 4 and some at 1st floor
 - GL-3 Manufacturer: Viracon
Thickness: 1" insulated: 1/4" Bronze, HS (Reference color)
1/2" Air Space
1/4" Clear, HS (Reference color)
Color: Bronze reflective VX4-CA #2 HS with SPD/PASS1 V948LF (MED GR1) #4 HS
Location: Spandrel Glass
 - GL-4 Manufacturer: PPG Solex
Thickness: 1" insulated: 1/4" Green, HS
1/2" Air Space
1/4" Clear, HS (With opaque spandrel film)
Color: Green to match GL-1
Location: Spandrel Glass 1st floor

- E.I.F.S.**
- EF-1 Finish: Fine finish with 1mm aggregate
Integral Color: To match PT-3, Frazee Desert Tumbleweed, 8723M
Location: EIFS field
 - EF-2 Finish: Fine finish with 1mm aggregate
Integral Color: To match PT-2, Frazee Bark Mulch, 8724M
Location: EIFS Projections
 - EF-3 Finish: Fine finish with 1mm aggregate
Integral Color: To match PT-5, Frazee Wild Country, 8735D
Location: Office 1st floor soffit headers

FINISH LEGEND

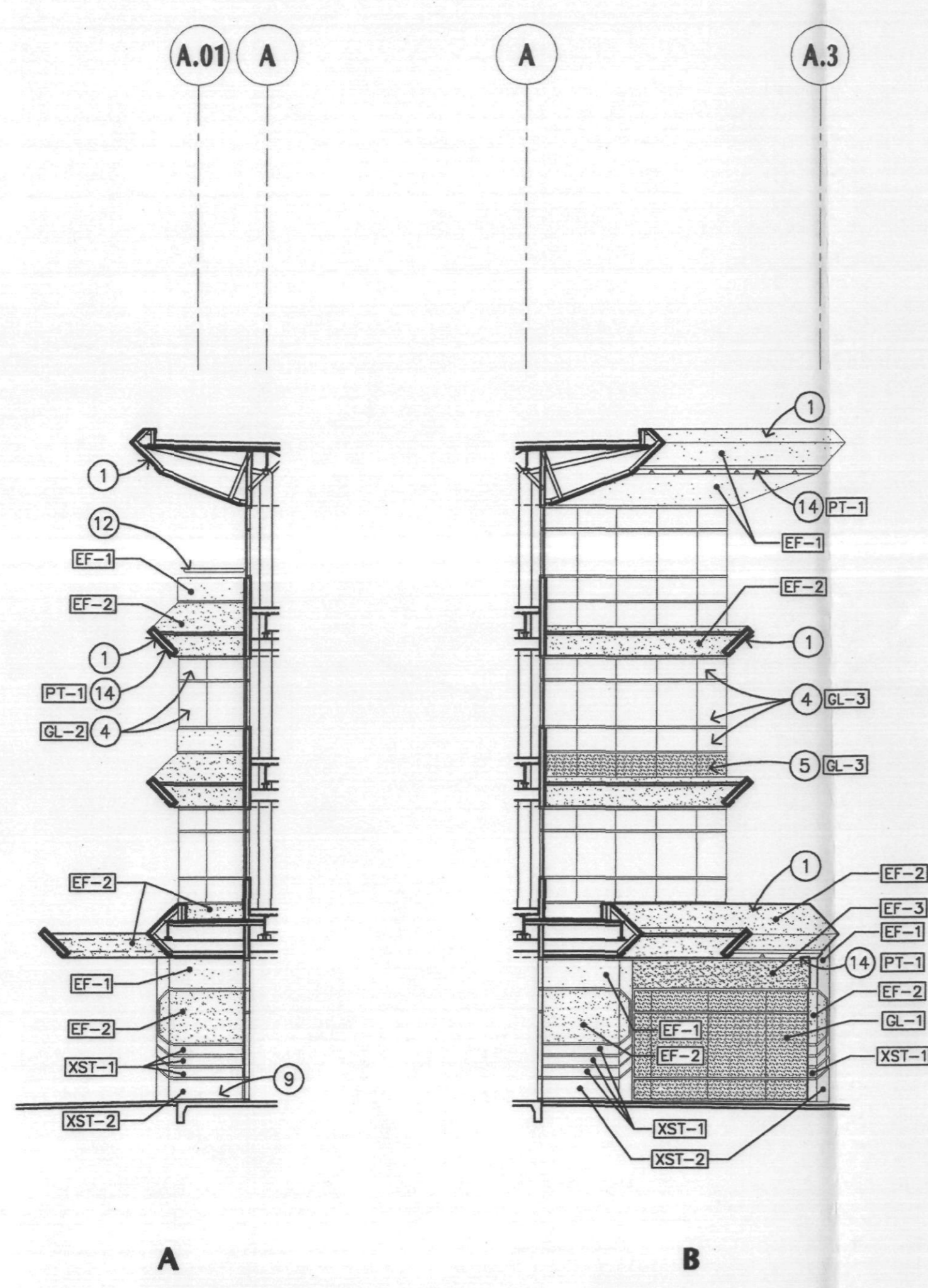
- XST-1 Stone
Supplier: Architectural Products Group
Material: Granite, Giallo Veneziano Red Vein
Cut: Polished
Finish: Polished
Location: Exterior Columns
- XST-2 Stone
Supplier: Architectural Products Group
Material: Granite, Giallo Veneziano Red Vein
Cut: Brushed
Finish: Brushed
Location: Exterior columns
- PT-1 Manufacturer:
Color: Faux Copper Finish
Number: Custom color
Finish: Special
Location: Preformed fascia accent
- PT-2 Manufacturer: Frazee
Color: Bark Mulch
Number: 8724M
Finish: 203 Flat
Location: EIFS projection integral color - see EF-2
- PT-3 Manufacturer: Frazee
Color: Desert Tumbleweed
Number: 8723M
Finish: 203 Flat
Location: Exterior mullions & EIFS field integral color - see EF-1
- PT-4 Manufacturer: Frazee
Color: Light Antique
Number: CWO49W
Finish: 203 Flat
Location: Typical floor elevator lobby, restrooms, floors 2-4
- PT-5 Manufacturer: Frazee
Color: Wild Country
Number: 8735D
Finish: 203 Flat
Location: EIFS 1st floor soffit header integral color - see EF-3
- PT-6 Manufacturer: Frazee
Color: Aqua Sea
Number: 8075D
Finish: 124 Semi-Gloss
Location: Metal Accents and railing

OFFICE BUILDING - A
SEC FRANK LOYD BOWLEARD AND SCOTTSDALE ROAD
SCOTTSDALE, AZ

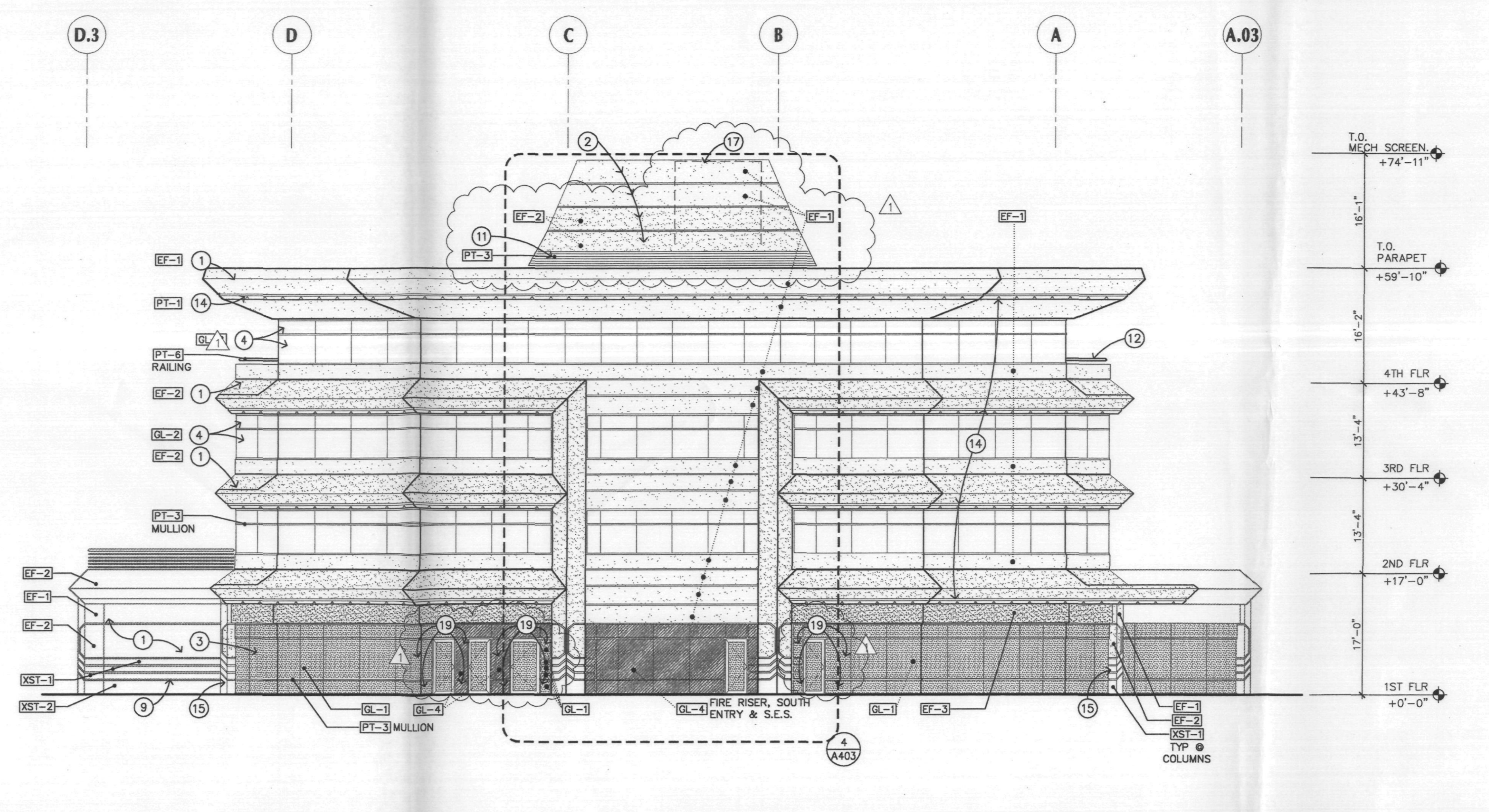


DATE ISSUED	24 JAN 03
DRAWN BY	RVC
CHECKED BY	L.E.
PROJECT NO.	001730
CADD FILE	A-302
DRAWING NO.	

A-302
EXTERIOR ELEVATIONS
SCALE: 3/32" = 1'-0"

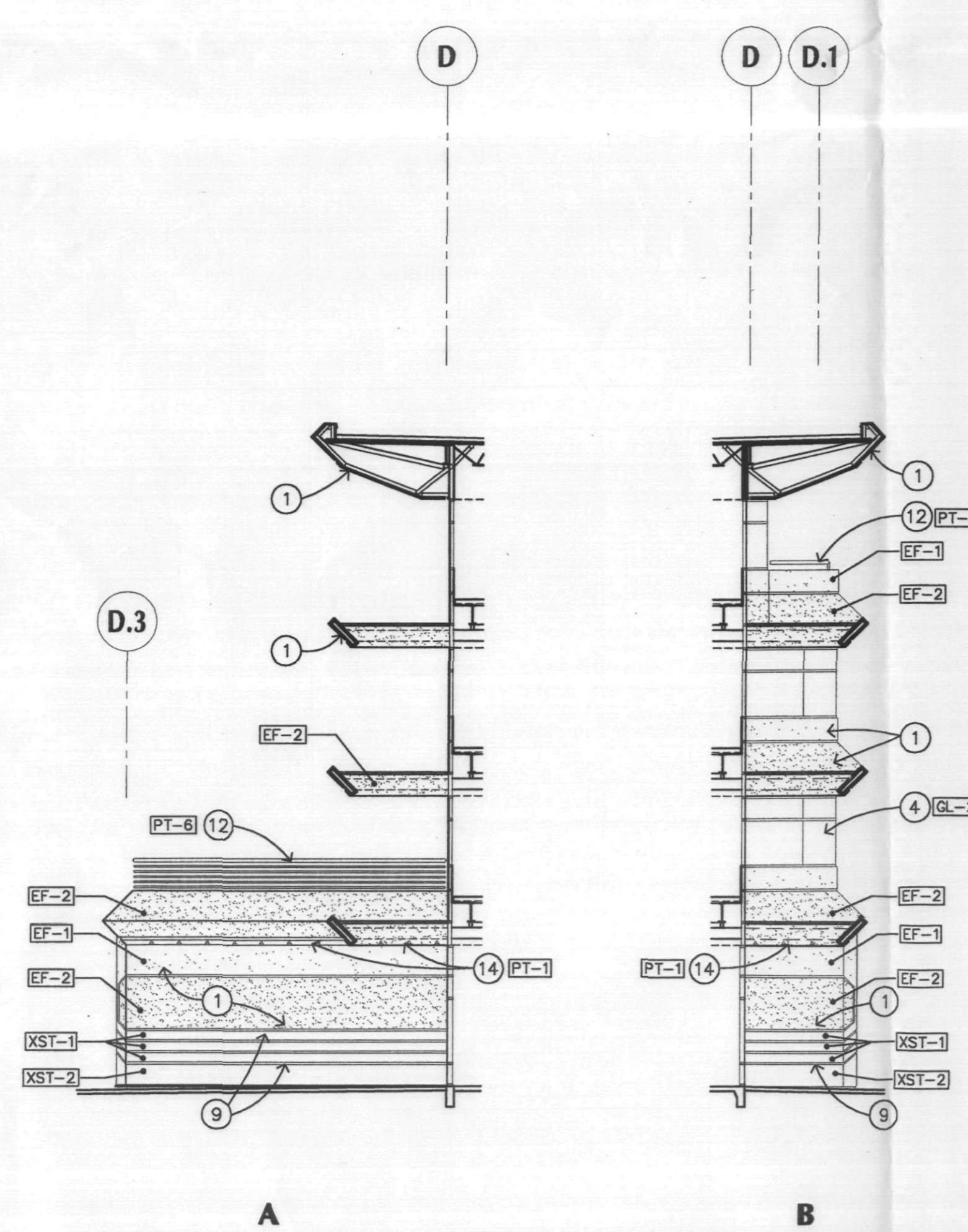


04 SECONDARY ENTRY ELEVATIONS 3/32"=1'-0"

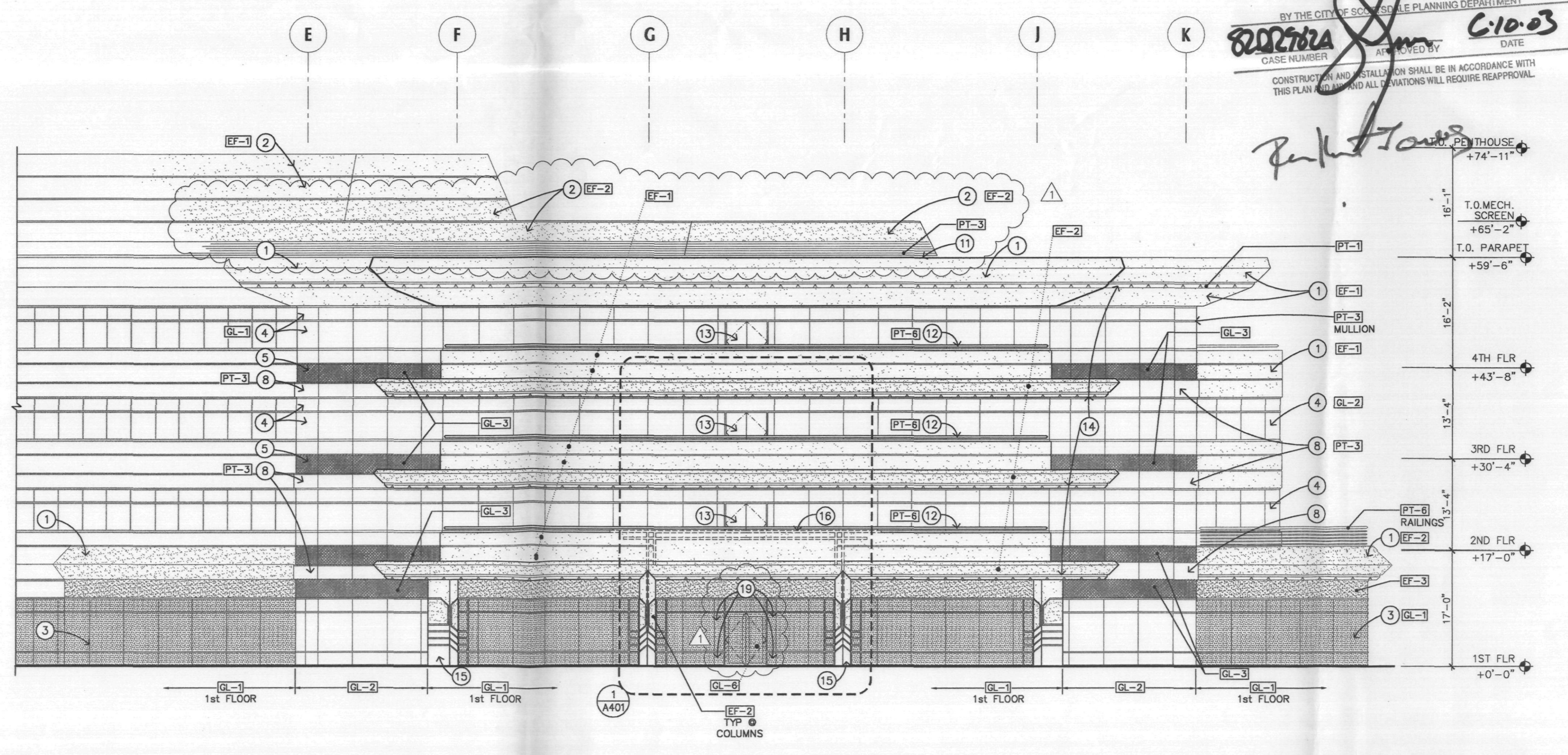


02 SOUTH ELEVATION 3/32"=1'-0"

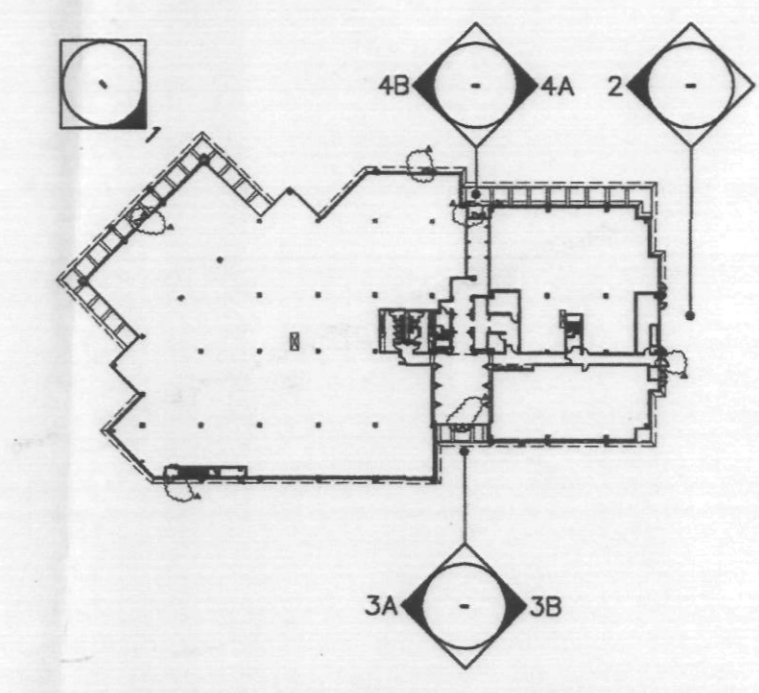
ARCHITECTURAL ELEVATIONS
APPROVED
BY THE CITY OF SCOTTSDALE PLANNING DEPARTMENT
DATE: 6-10-03
CONSTRUCTION AND INSTALLATION SHALL BE IN ACCORDANCE WITH THIS PLAN AND ALL REGULATIONS WILL REQUIRE REAPPROVAL.



03 PRIMARY ENTRY ELEVATIONS 3/32"=1'-0"



01 NORTH ELEVATION 3/32"=1'-0"



KEY PLAN

THIS DRAWING IS AN INSTRUMENT OF SERVICE AND THE PROPERTY OF DFD ARCHITECTURE AND SHALL REMAIN THEIR PROPERTY. THE USE OF THIS DRAWING SHALL BE RESTRICTED TO THE ORIGINAL SITE FOR WHICH IT WAS PREPARED AND PUBLICATION THEREOF IS EXPRESSLY FORBIDDEN BY ANY METHOD OR MEANS OR IN ANY MANNER WITHOUT THEIR WRITTEN CONSENT.