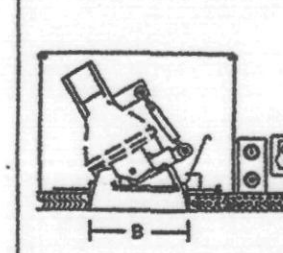


A-1 BLDG A+B ONLY
R7411-27-SW-FF38 R9a

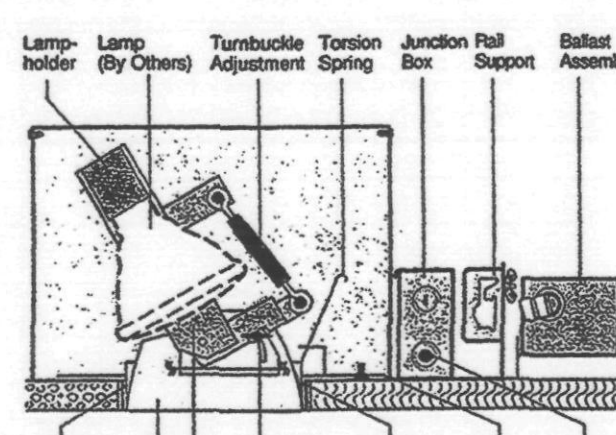
Optics and Applications
 Directional 70-100-150W PAR-38 Metal Halide 7 1/2" Conoid Aperture

Dimensions and Lamp



Number	A Depth	B Aperture	C Height	D Length	Lamps
R7411	12 1/2"	7 1/2"	17 1/2"	21 1/2"	70-100-150W PAR-38

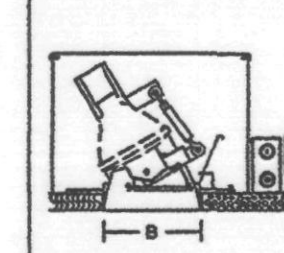
Matching Units
 Vertical Lamp Downlight Page R2
 Horizontal Lamp Downlight Page R5



A-2 BLDG A+B ONLY
R7411-27-SW R9a

Optics and Applications
 Directional 70-100-150W PAR-38 Metal Halide 7 1/2" Conoid Aperture

Dimensions and Lamp



Number	A Depth	B Aperture	C Height	D Length	Lamps
R7411	12 1/2"	7 1/2"	17 1/2"	21 1/2"	70-100-150W PAR-38

Matching Units
 Vertical Lamp Downlight Page R2
 Horizontal Lamp Downlight Page R5

RETAIL BLDGS & HARDSCAPE

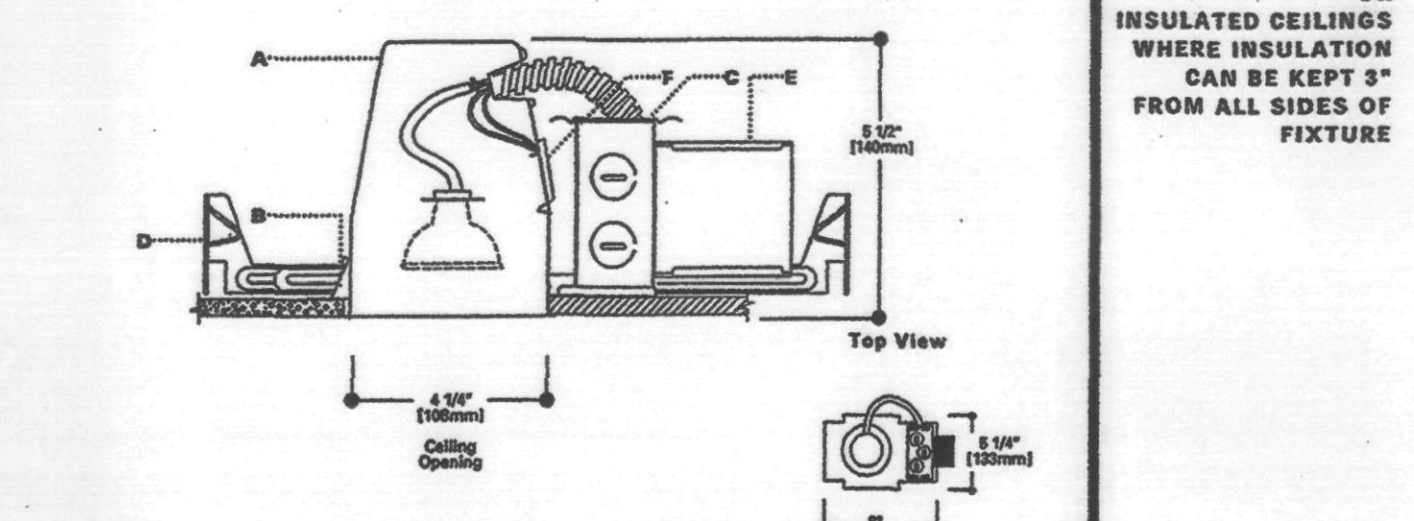
H1499T/1493P/L21

A-4 HALO

DESCRIPTION
 The H1499T is a small aperture low voltage housing for providing accent and task lighting.

DESCRIPTION
 The H1499T is a small aperture low voltage housing for providing accent and task lighting.

DESCRIPTION
 The H1499T is a small aperture low voltage housing for providing accent and task lighting.



COOPER LIGHTING

HARDSCAPE ONLY

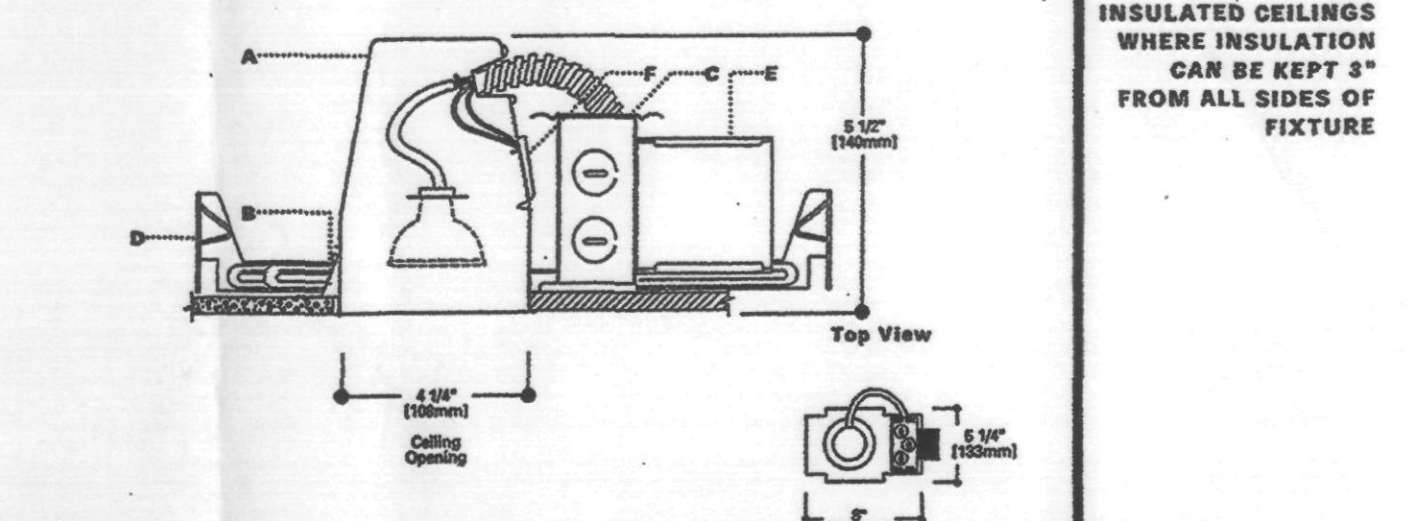
H1499T/1419P/L125

A-5 HALO

DESCRIPTION
 The H1499T is a small aperture low voltage housing for providing accent and task lighting.

DESCRIPTION
 The H1499T is a small aperture low voltage housing for providing accent and task lighting.

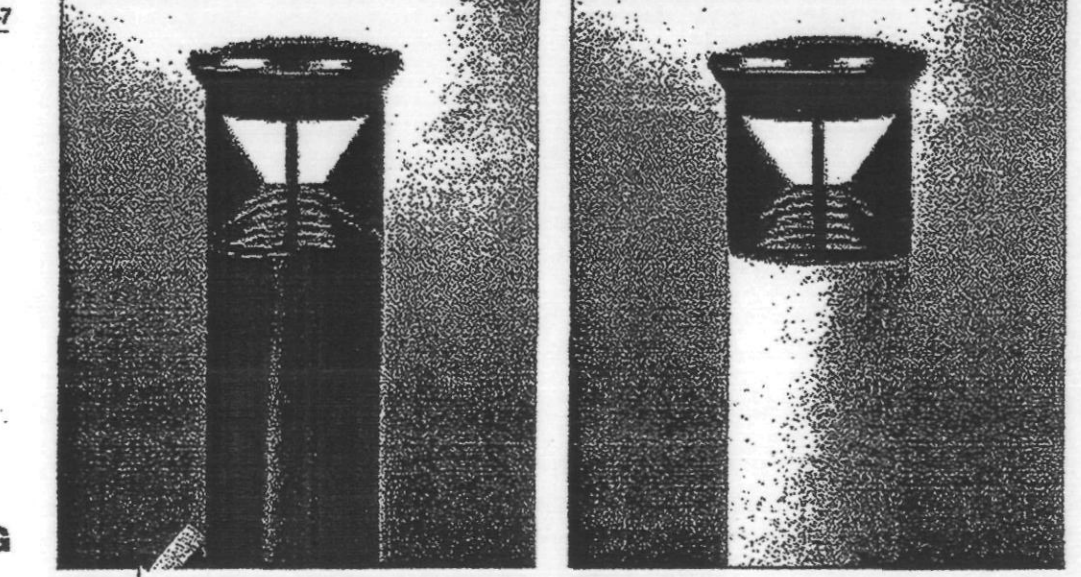
DESCRIPTION
 The H1499T is a small aperture low voltage housing for providing accent and task lighting.



COOPER LIGHTING

GEM HARDSCAPE ONLY B-1

Superior Performance Bollards

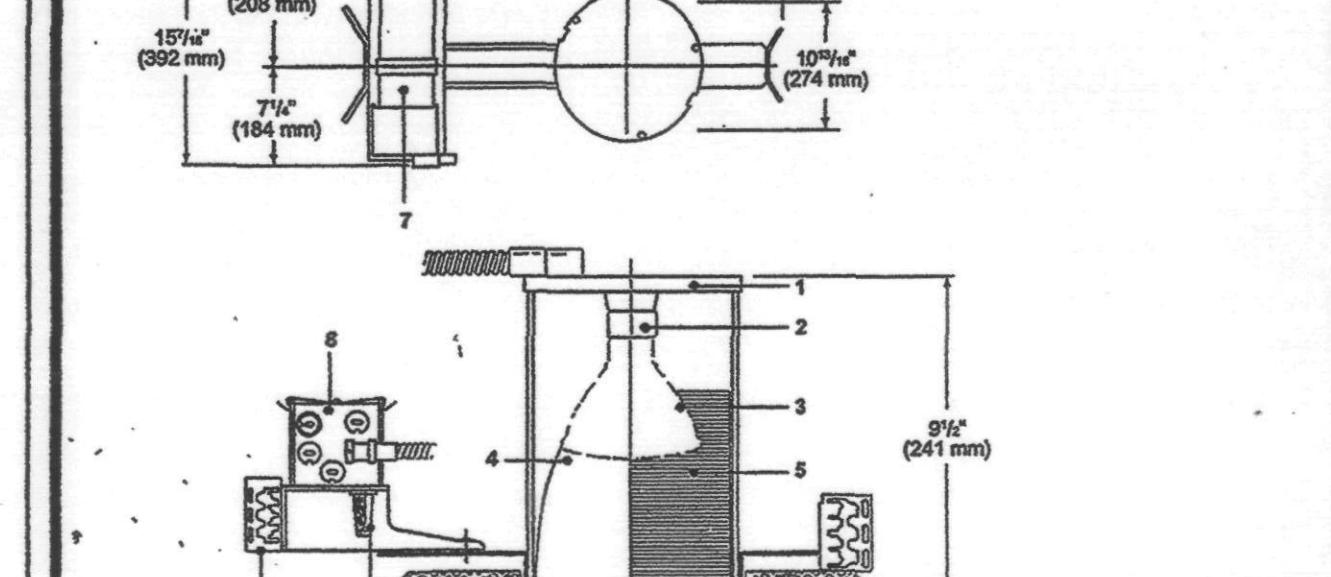


GEM1 Aluminum Shaft
 30 watt Compact Fluorescent 70 - 100 watt H.L.D.

GEM2 Concrete Shaft
 30 watt Compact Fluorescent 70 - 100 watt H.L.D.

RETAIL BLDGS & HARDSCAPE D-1

79M2/M7/M5/M8
 6" Metal Halide Downlight
 70W, 100W, 150W PAR-38 M.H., or 35W, 70W PAR-30 M.H.



Features
 1. Pre-wired recessed housing.
 2. Adjustable medium base porcelain socket with visible plated screw shell.
 3. 70W, 100W, 150W PAR-38 or 35W, 70W PAR-30 open base metal halide lamp (by other).
 4. Parabolic specular clear, champagne gold, or black Alzak® reflector. 40" visual cutoff to lamp and lamp lens. Self-aligning (S7) standard. Optional painted white self-aligning (W7) available. Optical system secured by friction retaining clips. Reflector must be removed to install PAR-30 lamp.
 5. Spring retained, captive black baffles. Standard with white polypropylene film ring.
 6. Adjustable universal mounting bracket. Accepts 1 1/2" balling channel (by other), B-24 bar hanger available for T-bar balling (other separately).
 7. All ballasts are encased and potted, HPF, dual tapped, thermally protected and accessible from below ceiling. 30W, 70W, and 100W are high reactance. 150W is constant voltage autoformer. (CVA). See above for voltages.
 8. Pre-wired 4-conductor cable for easy below ceiling access.
 9. Thermal protector.
 10. UL, CSA Listed Suitable for damp locations

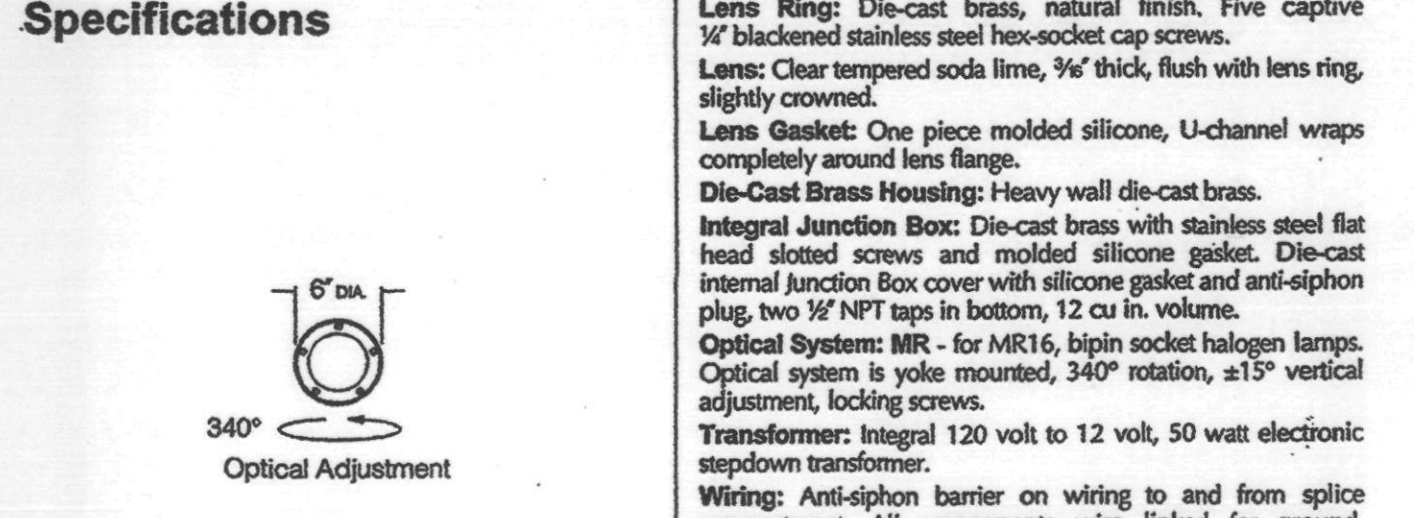
Standard Fixtures
 □ 79M2-330MHP-E-STB32 Clear Alzak Reflector
 □ 79M2-330MHP-E-STB33 Champagne Gold Alzak Reflector
 □ 79M2-330MHP-E-STB34 Black Alzak Reflector
 □ 79M2-330MHP-E-STB35 Black Millgrove Baffle
 □ 79M2-70MHP-E-STB32 Clear Alzak Reflector
 □ 79M2-70MHP-E-STB33 Champagne Gold Alzak Reflector
 □ 79M2-70MHP-E-STB34 Black Alzak Reflector
 □ 79M2-70MHP-E-STB35 Black Millgrove Baffle
 □ 79M5-100MHP-E-STB32 Clear Alzak Reflector
 □ 79M5-100MHP-E-STB33 Champagne Gold Alzak Reflector
 □ 79M5-100MHP-E-STB34 Black Alzak Reflector
 □ 79M5-100MHP-E-STB35 Black Millgrove Baffle
 □ 79M8-150MHP-E-STB32 Clear Alzak Reflector
 □ 79M8-150MHP-E-STB33 Champagne Gold Alzak Reflector
 □ 79M8-150MHP-E-STB34 Black Alzak Reflector
 □ 79M8-150MHP-E-STB35 Black Millgrove Baffle

Options (Check catalog no. with detailed option)
 □ B-24 Bar of two (2) 24" bar hangers for T-bar ceiling.
 □ P20PFA-1 Fuse kit installed at factory.
 □ P20PFA-2 Fuse kit for field installation.
 □ W7 Painted white self-align. Reflector "W7" with "WT" Stamped ceiling selector. Refer to T.O. Sheet.
 □ SCA RHC-102B for details.

BUILDING B HARDSCAPE FG-1

LTV764 Die-Cast Brass Low Voltage Accent / Integral Transformer Bronze Lightvau®
 revision 10/1/02 • h/264.pdf

KIM LIGHTING
 Type: LTV764 / MR / 50LV120
 Job: ITRG/LI2
 Fixture Catalog number: LTV764 / MR / 50LV120 ITRG/LI2-AM72
 Pages: 2 of 2



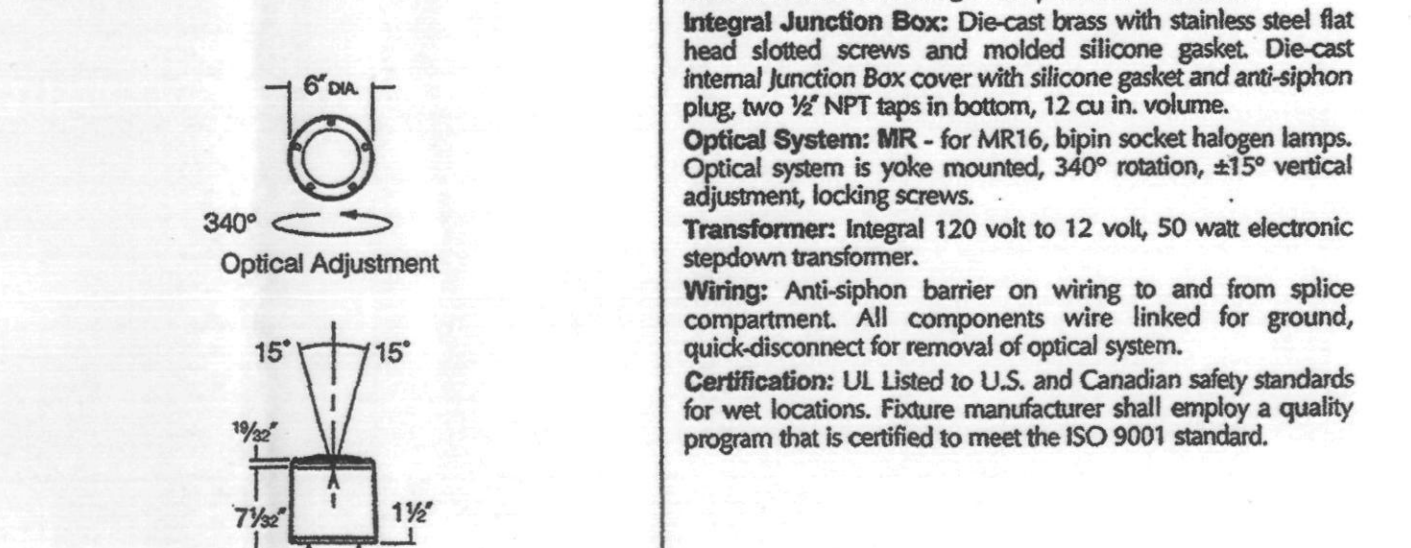
Specifications
 Lens Ring: Die-cast brass, natural finish. Five captive 1/8" blackened stainless steel hex-socket cap screws.
 Lens: Clear tempered soda lime, 3/4" thick, flush with lens ring, slightly crowned.
 Lens Gasket: One piece molded silicone, U-channel wraps completely around lens flange.
 Die-Cast Brass Housing: Heavy wall die-cast brass.
 Integral Junction Box: Die-cast brass with stainless steel flat head slotted screws and molded silicone gasket. Die-cast internal Junction Box cover with silicone gasket and anti-photon plug. Two 1/2" NPT taps in bottom, 12 cu. in. volume.
 Optical System: MR - for MR16, bi-pin socket halogen lamps. Optical system is yoke mounted, 340° rotation, ±15° vertical adjustment, locking screws.
 Transformer: Integral 120 volt to 12 volt, 50 watt electronic step-down transformer.
 Wiring: Anti-photon barrier on wiring to and from splice compartment. All components wire linked for ground, quick-disconnect for removal of optical system.
 Certification: UL Listed to U.S. and Canadian safety standards for wet locations. Fixture manufacturer shall employ a quality program that is certified to meet the ISO 9001 standard.

© 2002 KIM LIGHTING INC. • P.O. BOX 60200, CITY OF INDUSTRY, CA 91716-0200 • TEL: 626/950-5000 • FAX: 626/950-2000 621102274

HARDSCAPE & BLDG A+B FG-2

LTV764 Die-Cast Brass Low Voltage Accent / Integral Transformer Bronze Lightvau®
 revision 10/1/02 • h/264.pdf

KIM LIGHTING
 Type: LTV764 / MR / 50LV120
 Job: ITRG/LI2-AM72
 Fixture Catalog number: LTV764 / MR / 50LV120 ITRG/LI2-AM72
 Pages: 2 of 2



Specifications
 Lens Ring: Die-cast brass, natural finish. Five captive 1/8" blackened stainless steel hex-socket cap screws.
 Lens: Clear tempered soda lime, 3/4" thick, flush with lens ring, slightly crowned.
 Lens Gasket: One piece molded silicone, U-channel wraps completely around lens flange.
 Die-Cast Brass Housing: Heavy wall die-cast brass.
 Integral Junction Box: Die-cast brass with stainless steel flat head slotted screws and molded silicone gasket. Die-cast internal Junction Box cover with silicone gasket and anti-photon plug. Two 1/2" NPT taps in bottom, 12 cu. in. volume.
 Optical System: MR - for MR16, bi-pin socket halogen lamps. Optical system is yoke mounted, 340° rotation, ±15° vertical adjustment, locking screws.
 Transformer: Integral 120 volt to 12 volt, 50 watt electronic step-down transformer.
 Wiring: Anti-photon barrier on wiring to and from splice compartment. All components wire linked for ground, quick-disconnect for removal of optical system.
 Certification: UL Listed to U.S. and Canadian safety standards for wet locations. Fixture manufacturer shall employ a quality program that is certified to meet the ISO 9001 standard.

© 2002 KIM LIGHTING INC. • P.O. BOX 60200, CITY OF INDUSTRY, CA 91716-0200 • TEL: 626/950-5000 • FAX: 626/950-2000 621102274

Table of Contents

Performance Features	2
Mechanical Design, Installation and Maintenance	3
Ordering Information	4
Optical System Features	6-7

KIM LIGHTING
 SITE / AREA:
 PARKING STRUCTURE
 ROADWAY
 ARCHITECTURAL FLOOD
 ACCENT
 LANDSCAPE

MAILING ADDRESS:
 P.O. BOX 60200
 CITY OF INDUSTRY, CA 91716-0200
 U.S.A.
 PHONE 626/950-5000
 FAX 626/950-2000

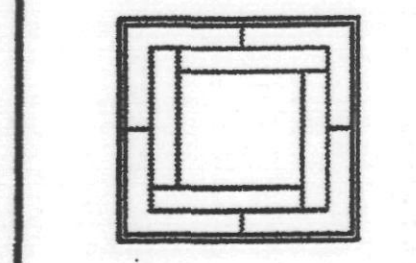
BUSINESS ADDRESS:
 1005 EAST DALE AVENUE
 CITY OF INDUSTRY, CA 91715
 U.S.A.
 PHONE 626/950-5000
 FAX 626/950-2000

www.kimlighting.com

Printed in U.S.A.
 SCS700273
 Version B00

727 E. MARYLAND AVE
 PHOENIX, AZ 85014
 phone: 602.266.6202
 facsimile: 602.265.6212

THE PROMENADE - PHASE II
 SCOTTSDALE, AZ
 FOR THE PERKINSON GROUP



OBVIOUS CITY COMMENTS
 OFFICE REVISIONS

SCHEMATIC
DESIGN DEVELOPMENT
CONSTRUCTION DOCUMENTS
BID/PRICING PACKAGE
BUILDING DEPT. APPROVAL

DATE ISSUED
 DRAWN BY
 CHECKED BY
 PROJECT NO.
 CADD FILE
 SCALE:
 DRAWING NO.

ED:1

APPROVED
 ORIGINAL PLANS PLANNING
 DATE: 8.6.02

T M A D Engineers
 Mechanical, and Electrical Consulting Engineers
 7250 N. 16th Street, Suite 200
 Phoenix, Arizona 85020
 (602) 371-1333
 Job No. 560X-00X.00

ARIZONA REVISED STATUTES 32-1129.01.
 NOTICE OF EXTENDED CERTIFICATION AND APPROVAL PERIOD PROVISION.
 This contract allows the owner to certify and approve billings and estimates within 30 days after the billings and estimates are received from the contractor.
 NOTICE OF EXTENDED PAYMENT PROVISION.
 This contract allows the owner to make payments within 30 days after certification and approval of billings and estimates.

RETAIL BLDGS & HARDSCAPE **FG-3**

LTV750 Series Bronze Housing Accent or Wall Wash Bronze Lightwall®

KIM LIGHTING
 Type: Job:
 Job: LTV750 PAR 150 HALOGEN 6M50 LAM50
 Catalog number: LTV750 PAR 150 HALOGEN 6M50 LAM50
 Approvals: _____
 Date: _____

Specifications

Lens Ring: Cast bronze, natural finish, beveled for water runoff. Four captive 1/4" blackened stainless steel hose-clamp cap screws.
 Lens: Clear tempered flat glass, 1/4" thick.
 Lens Gasket: One piece molded silicone, U-channel wraps completely around lens flange.
 Elybealt: Cast bronze, natural finish, 360° rotation at 45° intervals. Eight captive 1/4" blackened stainless steel screws.
 Bronze Housing: Two piece cast bronze, 3/4" min. wall thickness upper and lower housing continuously soldered together. No top lip to top die and moldings. Separate gasket and ballast components, individual cast aluminum internal covers with one piece molded silicone gaskets. Two 1/2" NPT in bottom of 24 cu. in. splice area. Modular reverse draft housing design top smaller than largest bottom diameter.
 Optical System: SP and NF - Spot or Narrow Flood spun aluminum reflector, specular Alzale® Black Duranox® and tube shield on SP only, PR - for PAR38 reflector lamps, or PAR36 and AR111 12V lamps. All optical systems yoke mounted, +0°, -30° vertical adjustment (0° to 30° from 0° vertical) with locking screws. WW - one piece hydroformed reflector, specular Alzale®, Wall Wash distribution. All medium base sockets rated 4KV, mini-can sockets for halogen lamps.
 Electrical Module: High power factor ballast, -20°F starting. Electrical components factory mounted to gasketed compartment cover.
 Wiring: Anti-siphon barrier on all wiring to and from ballast compartment. All components wire labeled for ground, quick-disconnect for removal of lamp brackets.
 Certification: UL Listed to U.S. and Canadian safety standards for wet locations. Fixture manufacturer shall employ a quality program that is certified to meet the ISO 9001:2000 standard.

See page 6 for Safety and Warranty Information

HARDSCAPE ONLY **FL-1**

Sign/Wall Lighter 4305 120 Volt Extruded Aluminum, T-8 Fluorescent

KIM LIGHTING
 Type: Job:
 Job: WIRROCO T-B GEL SHEVE #4600, COLOR #80 PRIMARY BLUE
 Fixture Catalog number: 4305 1120 1BL-2 JBR-2
 Mounting Options: (2) JBR-2
 Approvals: _____
 Date: _____

Specifications

Housing: One piece extruded aluminum with die-cast aluminum ends.
 Swivels: Two, die-cast aluminum, with locking teeth and 1/2" solid brass NPT mount. Provides horizontal rotation independent of the threaded mount. Swivel locked by 1/4-20 stainless set screw. Clear anodized prior to chrome conversion coating for added corrosion resistance.
 Reflector: Specular Alzale®.
 Lens: Clear flat acrylic, fully gasketed, retained by a concealed extruded aluminum rail with recessed captive allen-head fasteners.
 Socket: Medium bipin mounted on reflector.
 Wiring: Factory prewired with No. 18AWM rated 105°C, leads extended from swivel base.
 Ballast: Electronic ballast 0°F starting. Variable voltage 120 through 277.
 Finish: Super TGIC thermoplastic polyester powder coat paint, 2.5 mil nominal thickness, applied over a chrome conversion coating 2500 hour salt spray test endurance rating. Standard colors are Black (BL), Dark Bronze (DB), and Verde Green (GR).
 Certification: UL Listed to U.S. and Canadian safety standards for wet locations. Fixture manufacturer shall employ a quality program that is certified to meet the ISO 9001:2000 standard.

See page 6 for Safety and Warranty Information

HARDSCAPE ONLY **FL-2**

Sign/Wall Lighter 4305 120 Volt Extruded Aluminum, T-8 Fluorescent

KIM LIGHTING
 Type: Job:
 Job: WIRROCO COLOR #16 FLAME LENS
 Fixture Catalog number: FL1150L120BL
 Mounting Options: (1) JBR-2
 Approvals: _____
 Date: _____

Specifications

Housing: One piece die-cast low copper aluminum in a cylindrical shape with integral cooling fins over the entire length, and 1/4" minimum wall thickness. One piece silicone gasket between housing and door frame concealed when fixture is closed. Concealed integral cast slip hinges with stainless steel pins.
 Door Frame: One piece die-cast low copper aluminum with integral cooling fins, 1/4" minimum wall thickness, mates with housing to create a continuous cylindrical shape. Concealed integral cast slip hinges allow removal without tools. Stop-arm provided to limit door frame opening. 1/4" thick clear tempered glass lens is sealed to the lens frame by a one piece silicone gasket. Door frame assembly to housing by four stainless steel recessed captive allen-head screws. Four tapped and plugged holes provided for attachment of options.
 Standard Swivel: Die-cast aluminum with integral locking teeth providing 5° adjustment intervals. Stainless steel allen-head locking screw and 1/2" NPTM. Clear anodized prior to chrome conversion coating for added corrosion resistance.
 Reflector Assemblies: Interchangeable in all seven AFL10 models. Specular Alzale® aluminum optical components mounted to aluminum frame. Reflector assembly snaps into fixture housing with spring clips. Sockets are 4KV porcelain medium base (P-LID); 1-4 Mini-can (Halogen).
 Electrical Components: All electrical components are UL and CSA recognized with leads extending out of the swivel. High power factor ballast rated -40°F starting for HPS and -20°F for MH lamp modes. Optional photocell mounted with sensor on side of housing.
 Finish: Super TGIC thermoplastic polyester powder coat paint, 2.5 mil nominal thickness, applied over a chrome conversion coating 2500 hour salt spray test endurance rating. Standard colors are Black, Dark Bronze, Light Grey, or White. Custom colors are available and subject to additional charges, minimum quantities and longer lead times. Consult representative.
 Certification: UL Listed to U.S. and Canadian safety standards for wet locations. Fixture manufacturer shall employ a quality program that is registered to ISO 9001 standard.
 CAUTION: Fixtures must be grounded in accordance with local codes or the National Electrical Code. Failure to do so may result in local personal injury.

See page 6 for Safety and Warranty Information

AFL10

Architectural Floodlights revision 1/22/01 - afl10.pdf

KIM LIGHTING
 Type: Job:
 Job: _____
 Fixture Catalog number: _____
 Mounting Options: _____
 Approvals: _____
 Date: _____

Specifications

Housing: Die-cast aluminum body, lamp housing and socket enclosure.
 Swivel: Die-cast aluminum with locking teeth and 1/2" solid brass NPT mount. Provides 35° horizontal rotation independent of the threaded mount. Swivel locked by 1/4-20 stainless set screw. Clear anodized prior to chrome conversion coating for added corrosion resistance.
 Lens Ring: Integral die-cast aluminum lens ring and glass shield.
 Gasketing: Silicone gaskets used throughout.
 Sockets: Porcelain medium base.
 Wiring: No. 18AWM rated 105°C.
 Ballast: High power factor -20°F starting, mounted on tray, 120 volt standard.
 Ballast Box: High temperature, compression molded featuring longer fiberless impregnated heavy wall construction. Wall separates ballast chamber from splice compartments, splice area 32 cu. in. provided, two anti-siphon plugs to and from ballast chamber. Conduit entry two 1/2" NPT for through wiring, one 1/2" NPT for remote access.
 Ballast Cover: Cast bronze, applied with 1/2" NPTM for direct mount, with stainless steel set screw lock. Flat for remote mount.
 Finish: Super TGIC thermoplastic polyester powder coat paint, 2.5 mil nominal thickness, applied over a chrome conversion coating 2500 hour salt spray test endurance rating. Standard colors are Black (BL), Dark Bronze (DB), Verde Green (GR), and White (WH).
 Certification: UL Listed to U.S. and Canadian safety standards for wet locations. Fixture manufacturer shall employ a quality program that is certified to meet the ISO 9001:2000 standard.

See page 6 for Safety and Warranty Information

RETAIL BLDGS & HARDSCAPE **FL-3**

Sign/Wall Lighter 4305 120 Volt Extruded Aluminum, T-8 Fluorescent

KIM LIGHTING
 Type: Job:
 Job: _____
 Fixture Catalog number: _____
 Mounting Options: _____
 Approvals: _____
 Date: _____

Specifications

Housing: One piece extruded aluminum with die-cast aluminum ends.
 Swivels: Two, die-cast aluminum, with locking teeth and 1/2" solid brass NPT mount. Provides horizontal rotation independent of the threaded mount. Swivel locked by 1/4-20 stainless set screw. Clear anodized prior to chrome conversion coating for added corrosion resistance.
 Reflector: Specular Alzale®.
 Lens: Clear flat acrylic, fully gasketed, retained by a concealed extruded aluminum rail with recessed captive allen-head fasteners.
 Socket: Medium bipin mounted on reflector.
 Wiring: Factory prewired with No. 18AWM rated 105°C, leads extended from swivel base.
 Ballast: Electronic ballast 0°F starting. Variable voltage 120 through 277.
 Finish: Super TGIC thermoplastic polyester powder coat paint, 2.5 mil nominal thickness, applied over a chrome conversion coating 2500 hour salt spray test endurance rating. Standard colors are Black (BL), Dark Bronze (DB), and Verde Green (GR).
 Certification: UL Listed to U.S. and Canadian safety standards for wet locations. Fixture manufacturer shall employ a quality program that is certified to meet the ISO 9001:2000 standard.

See page 6 for Safety and Warranty Information

RETAIL BLDGS & HARDSCAPE **FL-A**

Sign/Wall Lighter 4305 120 Volt Extruded Aluminum, T-8 Fluorescent

KIM LIGHTING
 Type: Job:
 Job: VANDAL RESISTANT LENS
 Fixture Catalog number: 4305 1120 1BL
 Mounting Options: (2) JBR-2
 Approvals: _____
 Date: _____

Specifications

Housing: One piece extruded aluminum with die-cast aluminum ends.
 Swivels: Two, die-cast aluminum, with locking teeth and 1/2" solid brass NPT mount. Provides horizontal rotation independent of the threaded mount. Swivel locked by 1/4-20 stainless set screw. Clear anodized prior to chrome conversion coating for added corrosion resistance.
 Reflector: Specular Alzale®.
 Lens: Clear flat acrylic, fully gasketed, retained by a concealed extruded aluminum rail with recessed captive allen-head fasteners.
 Socket: Medium bipin mounted on reflector.
 Wiring: Factory prewired with No. 18AWM rated 105°C, leads extended from swivel base.
 Ballast: Electronic ballast 0°F starting. Variable voltage 120 through 277.
 Finish: Super TGIC thermoplastic polyester powder coat paint, 2.5 mil nominal thickness, applied over a chrome conversion coating 2500 hour salt spray test endurance rating. Standard colors are Black (BL), Dark Bronze (DB), and Verde Green (GR).
 Certification: UL Listed to U.S. and Canadian safety standards for wet locations. Fixture manufacturer shall employ a quality program that is certified to meet the ISO 9001:2000 standard.

See page 6 for Safety and Warranty Information

BLDG B HARDSCAPE **GM-1**

RETAIL BLDGS & HARDSCAPE **GM-1**

Scarab™ EL740 120 Volt Die-Cast Aluminum, PAR38 Incandescent / Halogen

KIM LIGHTING
 Type: Job:
 Job: EL740BL/EP17
 Fixture Catalog number: EL740BL/EP17
 Mounting Options: _____
 Approvals: _____
 Date: _____

Specifications

Housing: Die-cast aluminum body, lamp housing and socket enclosure.
 Swivel: Die-cast aluminum with locking teeth and 1/2" solid brass NPT mount. Provides 35° horizontal rotation independent of the threaded mount. Swivel locked by 1/4-20 stainless set screw. Clear anodized prior to chrome conversion coating for added corrosion resistance.
 Lens Frame: Integral die-cast aluminum lens ring and glass shield.
 Lens: Tempered clear soda lime glass with silicone gasket. Flush with lens frame to promote water runoff when positioned upward.
 Gasketing: Silicone gaskets used throughout.
 Sockets: Nickel plated brass porcelain socket. 4KV pulse rated.
 Wiring: No. 18AWM rated 105°C.
 Ballast: Super TGIC thermoplastic polyester powder coat paint, 2.5 mil nominal thickness, applied over a chrome conversion coating 2500 hour salt spray test endurance rating. Standard colors are Black (BL), Dark Bronze (DB), and Verde Green (GR).
 Certification: UL Listed to U.S. and Canadian safety standards for wet locations. Fixture manufacturer shall employ a quality program that is certified to meet the ISO 9001:2000 standard.

See page 6 for Safety and Warranty Information

HARDSCAPE ONLY **GM-2**

Die-Cast Aluminum, PAR38 Metal Halide / Mercury Vapor

KIM LIGHTING
 Type: Job:
 Job: GM200 70MH120 1BL
 Fixture Catalog number: GM200 70MH120 1BL
 Mounting Options: _____
 Approvals: _____
 Date: _____

Specifications

Housing: Die-cast aluminum body, lamp housing and socket enclosure.
 Swivel: Die-cast aluminum with locking teeth and 1/2" solid brass NPT mount. Provides 35° horizontal rotation independent of the threaded mount. Swivel locked by 1/4-20 stainless set screw. Clear anodized prior to chrome conversion coating for added corrosion resistance.
 Lens Ring: Integral die-cast aluminum lens ring and glass shield.
 Gasketing: Silicone gaskets used throughout.
 Sockets: Porcelain medium base.
 Wiring: No. 18AWM rated 105°C.
 Ballast: High power factor -20°F starting, mounted on tray, 120 volt standard.
 Ballast Box: High temperature, compression molded featuring longer fiberless impregnated heavy wall construction. Wall separates ballast chamber from splice compartments, splice area 32 cu. in. provided, two anti-siphon plugs to and from ballast chamber. Conduit entry two 1/2" NPT for through wiring, one 1/2" NPT for remote access.
 Ballast Cover: Cast bronze, applied with 1/2" NPTM for direct mount, with stainless steel set screw lock. Flat for remote mount.
 Finish: Super TGIC thermoplastic polyester powder coat paint, 2.5 mil nominal thickness, applied over a chrome conversion coating 2500 hour salt spray test endurance rating. Standard colors are Black (BL), Dark Bronze (DB), Verde Green (GR), and White (WH).
 Certification: UL Listed to U.S. and Canadian safety standards for wet locations. Fixture manufacturer shall employ a quality program that is certified to meet the ISO 9001:2000 standard.

See page 6 for Safety and Warranty Information

GM-3

Scarab™ EL730 120 Volt Die-Cast Aluminum, PAR38 Halogen

KIM LIGHTING
 Type: Job:
 Job: EL730BL/EP17
 Fixture Catalog number: EL730BL/EP17
 Mounting Options: _____
 Approvals: _____
 Date: _____

Specifications

Housing: Die-cast aluminum body, lamp housing and socket enclosure.
 Swivel: Die-cast aluminum with locking teeth and 1/2" solid brass NPT mount. Provides horizontal rotation independent of the threaded mount. Swivel locked by 1/4-20 stainless set screw. Clear anodized prior to chrome conversion coating for added corrosion resistance.
 Lens Frame: Integral die-cast aluminum lens ring and glass shield.
 Lens: Tempered clear soda lime glass with silicone gasket. Flush with lens frame to promote water runoff when positioned upward.
 Gasketing: Silicone gaskets used throughout.
 Sockets: Nickel plated brass porcelain socket. 4KV pulse rated.
 Wiring: No. 18AWM rated 105°C.
 Ballast: Super TGIC thermoplastic polyester powder coat paint, 2.5 mil nominal thickness, applied over a chrome conversion coating 2500 hour salt spray test endurance rating. Standard colors are Black (BL), Dark Bronze (DB), and Verde Green (GR).
 Certification: UL Listed to U.S. and Canadian safety standards for wet locations. Fixture manufacturer shall employ a quality program that is certified to meet the ISO 9001:2000 standard.

See page 6 for Safety and Warranty Information

HARDSCAPE & RETAIL BLDGS **GM-3**

Scarab™ EL730 120 Volt Die-Cast Aluminum, PAR38 Halogen

KIM LIGHTING
 Type: Job:
 Job: _____
 Fixture Catalog number: _____
 Mounting Options: _____
 Approvals: _____
 Date: _____

Specifications

Housing: Die-cast aluminum body, lamp housing and socket enclosure.
 Swivel: Die-cast aluminum with locking teeth and 1/2" solid brass NPT mount. Provides horizontal rotation independent of the threaded mount. Swivel locked by 1/4-20 stainless set screw. Clear anodized prior to chrome conversion coating for added corrosion resistance.
 Lens Frame: Integral die-cast aluminum lens ring and glass shield.
 Lens: Tempered clear soda lime glass with silicone gasket. Flush with lens frame to promote water runoff when positioned upward.
 Gasketing: Silicone gaskets used throughout.
 Sockets: Nickel plated brass porcelain socket. 4KV pulse rated.
 Wiring: No. 18AWM rated 105°C.
 Ballast: Super TGIC thermoplastic polyester powder coat paint, 2.5 mil nominal thickness, applied over a chrome conversion coating 2500 hour salt spray test endurance rating. Standard colors are Black (BL), Dark Bronze (DB), and Verde Green (GR).
 Certification: UL Listed to U.S. and Canadian safety standards for wet locations. Fixture manufacturer shall employ a quality program that is certified to meet the ISO 9001:2000 standard.

See page 6 for Safety and Warranty Information

THIS FIXTURE HAS BEEN DELETED

727 E. MARYLAND AVE
 PHOENIX, AZ 85014
 PHONE: 602.266.6202
 FACSIMILE: 602.265.6212

THE PROMENADE - PHASE II
 SCOTTSDALE, AZ
 FOR THE PEDERSON GROUP

APPROVED FOR THE CITY OF PHOENIX
 BY: _____
 DATE: _____

DATE ISSUED: _____
 DRAWN BY: _____
 CHECKED BY: _____
 PROJECT NO.: _____
 CADD FILE: _____
 SCALE: _____
 DRAWING NO.: **ED.2**

ARIZONA REVISED STATUTES 32-1129.01.
 NOTICE OF EXTENDED CERTIFICATION AND APPROVAL PERIOD PROVISION.
 This contract allows the owner to certify and approve billings and estimates within 30 days after the billings and estimates are received from the contractor.
 NOTICE OF EXTENDED PAYMENT PROVISION.
 This contract allows the owner to make payments within 30 days after certification and approval of billings and estimates.

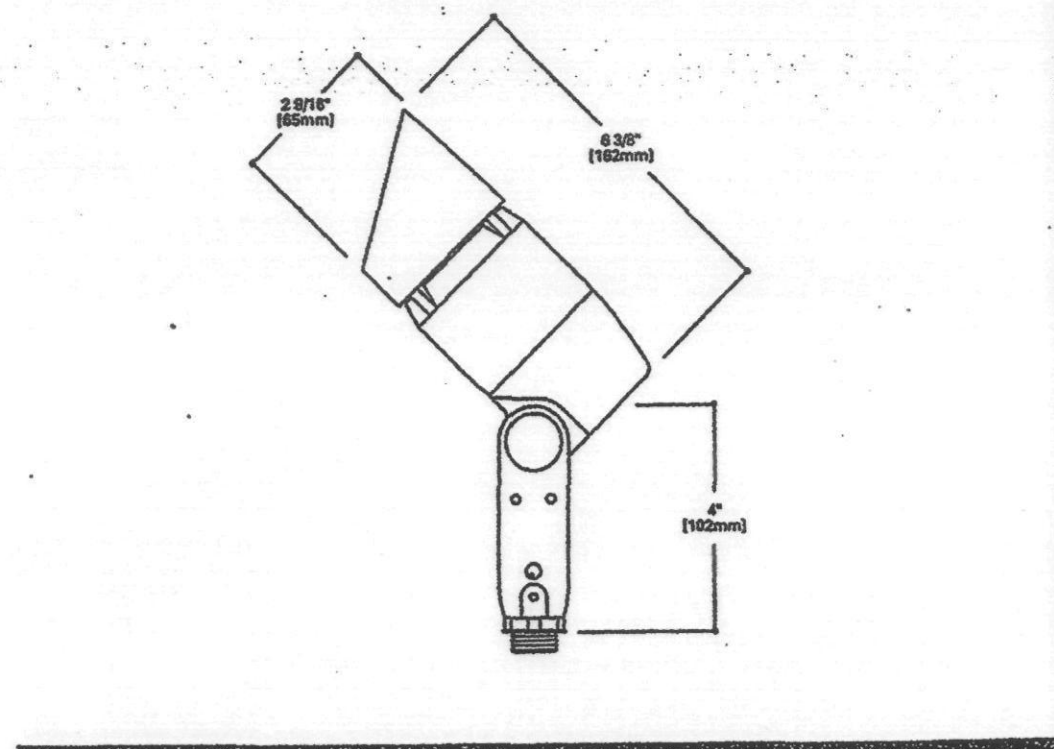
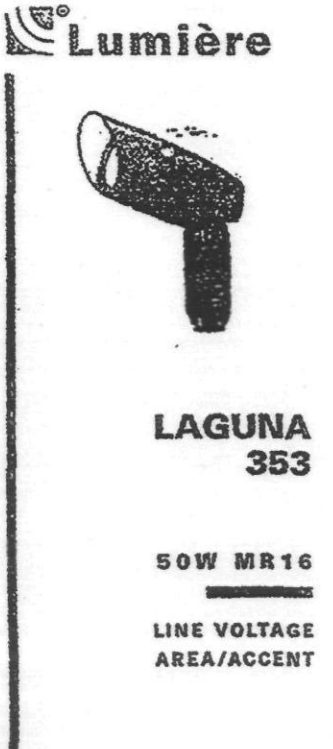
T M A D Engineers
 Mechanical, and Electrical Consulting Engineers
 7250 N. 16th Street, Suite 200
 Phoenix, Arizona 85020
 (602) 371-1333
 Job No. 560X-00X.00

RETAIL BLDGS & HARDSCAPE

353-PK-MB2-LVR GM-4

DESCRIPTION
An ultra-compact light weight line voltage fixture with integrated 120V electronic transformer for use with 12V MR16 lamps. Its unique, patented design combines durability for architectural and landscaping use with versatility for accent, flood and general illumination. Fully adjustable from all mounting positions, with patented anti-siphon construction to prevent water entry through lead wires. Built-in adjustable glare shield and recessed light source reduce glare without impacting lamp function. Protected by U.S. patent no. 6,899,091.

SPECIFICATION FEATURES
A-Finish: Fixture constructed from a non-corrosive high temperature composite material selected for its ability to withstand the rigors of the landscape environment. Black finish.
B-Lens: Tempered glass, secured with a high temperature adhesive.
C-Gasket: Housing and hood are sealed with a high temperature "O" ring gasket.
D-Housing: Injection molded from high temperature composite material. Stainless steel and brass hardware.
E-Hood: Injection molded from high temperature composite material. Hood removes for easy relamping.
F-Lamps: (By others. See sheet back.)
G-Adjustability: Adjustable stem equipped with standard 1/2" NPS threaded male fitting. Allows full range of aiming from any mounting position.
H-Socket: Ceramic socket with 250° C "Bell" coated lead wires.
I-Transformer: Electronic transformer sealed in stem assembly for cool operation and maximum efficiency.
J-Compatibility: Compatible with dimmers and control systems designed for use with electronic transformers.
K-Labels: UL listed, standard wet label. C-UL certified.



ORDERING INFORMATION

Fixture	Finish	Accessories
353	BK	(Order Separately)
	BK/Black	(See Sheet Back for Available Accessories)

WWW.COOPERLUMINING.COM

BLOGGARD ONLY 'MHF-1'

KIM LIGHTING
Type: CFL
Job: Compact Floodlights
Fixture Catalog number: 122201 - cpl.pdf
Mounting Options: *TOP SHIELD*

Specifications
Dimensions: CFL Models 50 to 70 watt H.I.D. Medium Base Lamps 13 to 42 watt Compact Fluorescent 60 watt Incandescent 150 watt Halogen
Maximum weight: 13 lb

Housing: One piece die-cast low copper aluminum in a cylindrical shape with integral cooling fins over the entire length, and .100" minimum wall thickness. One piece silicone gasket between housing and lens frame.
Lens Frame: One piece die-cast low copper aluminum with integral cooling fins over the entire length, and .100" minimum wall thickness. Matte with housing to create a continuous cylindrical shape. 1/8" thick clear tempered glass lens is sealed to the lens frame by a one piece stamped silicone gasket. Lens frame secures to housing by two stainless steel recessed captive allen-head screws.
Swivel: Die-cast aluminum with integral locking teeth providing 6° adjustment intervals and 1/2" NPSM plus solid brass locknut for mounting. Clear anodized prior to chrome conversion coating for added corrosion resistance. Fasteners: Stainless steel, recessed captive allen-head screws.
Reflector: Specular Alzak® aluminum optical components mounted to aluminum frame.
Socket: 4KV porcelain medium base (T-10 Incandescent and H.I.D.), T4 Mini-can (Halogen), 13w GX23-2 2-pin base, 40w GX24q-3 4-pin base (Fluorescent).
Ballast: All electrical components are UL and CSA recognized with leads extending out of the swivel splice compartment. Normal power factor ballast rated 300% starting (13 watt Twin Tube Fluorescent); High power factor ballast rated 0% starting (42 watt Triple Tube Fluorescent); Reactor - High power factor with starting temperatures of -40°F for HPS and -20°F for MH lamp modes. For MH/I20 volt, a step-up transformer is provided. For HPS/I27 volt, a step-down transformer is provided (H.I.D.).
Finish: Super TGIC thermose polyester powder coat paint, 2.5 mil nominal thickness, applied over a chrome conversion coating; 2500 hour salt spray test, endurance rating. Standard colors are Black, Dark Bronze, Light Gray, Platinum Silver, Verde Green or White. Custom colors are available and subject to additional charges, minimum quantities and longer lead times. Consult representative.
Certification: UL Listed to U.S. and Canadian safety standards for wet locations. Fixture manufacturer shall employ a quality program that is registered to ISO 9001 standard.
CAUTION: Fixture must be grounded in accordance with local codes or the National Electrical Code. Failure to do so may result in serious personal injury.

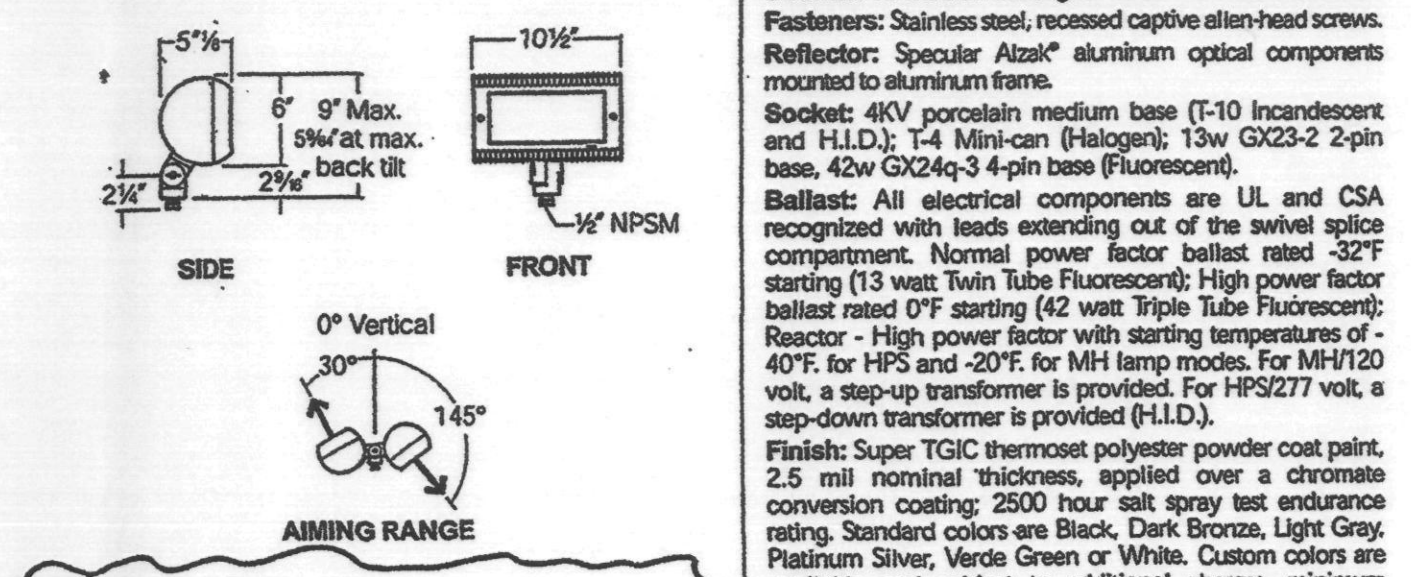


FIGURE TO BE PROVIDED W/ TOP SHIELD

RETAIL BLDGS & HARDSCAPE 'MHF-2'

Small Floodlight
ORDERING SEQUENCE
CATALOG NUMBER: TFL
VOLTAGE: 120V
OPTIONS (Factory Installed): TAZ-120

Specifications
Dimensions: 15.75" H, 10.5" W, 10.5" D
Maximum weight: 13 lb

Housing: One piece die-cast low copper aluminum in a cylindrical shape with integral cooling fins over the entire length, and .100" minimum wall thickness. One piece silicone gasket between housing and lens frame.
Lens Frame: One piece die-cast low copper aluminum with integral cooling fins over the entire length, and .100" minimum wall thickness. Matte with housing to create a continuous cylindrical shape. 1/8" thick clear tempered glass lens is sealed to the lens frame by a one piece stamped silicone gasket. Lens frame secures to housing by two stainless steel recessed captive allen-head screws.
Swivel: Die-cast aluminum with integral locking teeth providing 6° adjustment intervals and 1/2" NPSM plus solid brass locknut for mounting. Clear anodized prior to chrome conversion coating for added corrosion resistance. Fasteners: Stainless steel, recessed captive allen-head screws.
Reflector: Specular Alzak® aluminum optical components mounted to aluminum frame.
Socket: 4KV porcelain medium base (T-10 Incandescent and H.I.D.), T4 Mini-can (Halogen), 13w GX23-2 2-pin base, 40w GX24q-3 4-pin base (Fluorescent).
Ballast: All electrical components are UL and CSA recognized with leads extending out of the swivel splice compartment. Normal power factor ballast rated 300% starting (13 watt Twin Tube Fluorescent); High power factor ballast rated 0% starting (42 watt Triple Tube Fluorescent); Reactor - High power factor with starting temperatures of -40°F for HPS and -20°F for MH lamp modes. For MH/I20 volt, a step-up transformer is provided. For HPS/I27 volt, a step-down transformer is provided (H.I.D.).
Finish: Super TGIC thermose polyester powder coat paint, 2.5 mil nominal thickness, applied over a chrome conversion coating; 2500 hour salt spray test, endurance rating. Standard colors are Black, Dark Bronze, Light Gray, Platinum Silver, Verde Green or White. Custom colors are available and subject to additional charges, minimum quantities and longer lead times. Consult representative.
Certification: UL Listed to U.S. and Canadian safety standards for wet locations. Fixture manufacturer shall employ a quality program that is registered to ISO 9001 standard.
CAUTION: Fixture must be grounded in accordance with local codes or the National Electrical Code. Failure to do so may result in serious personal injury.

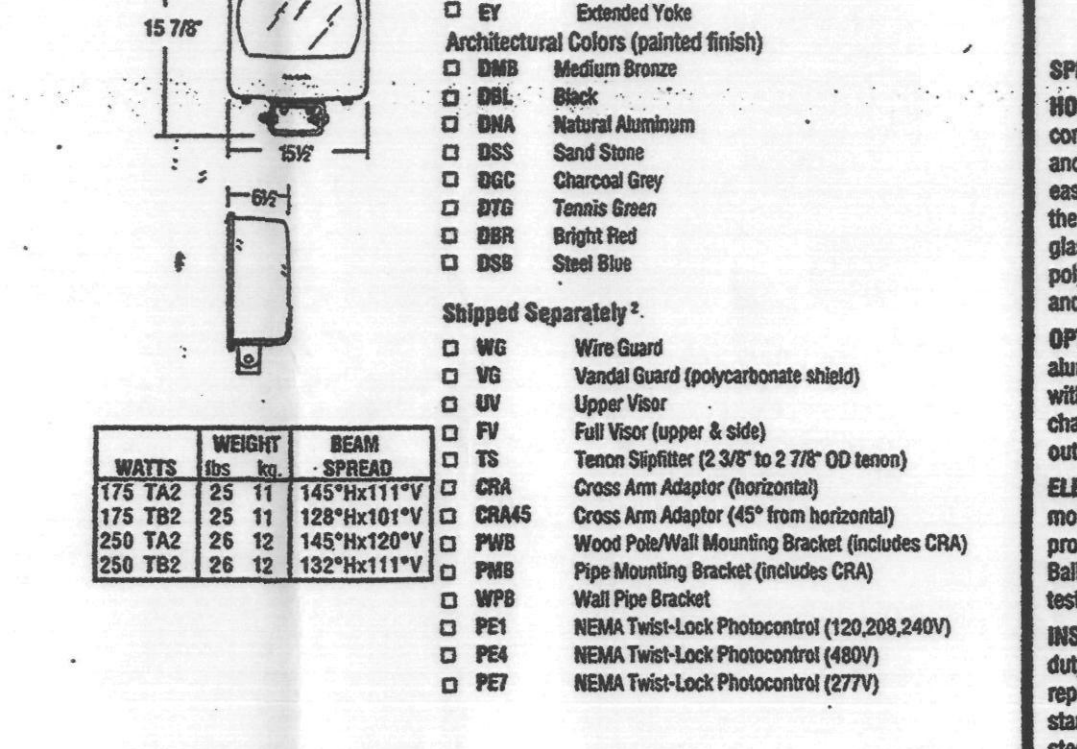


FIGURE TO BE PROVIDED W/ TOP SHIELD

TFL

METAL HALIDE 175/250W 15" to 30" Mounting

Specifications
Dimensions: 15" H, 10" W, 10" D
Maximum weight: 13 lb

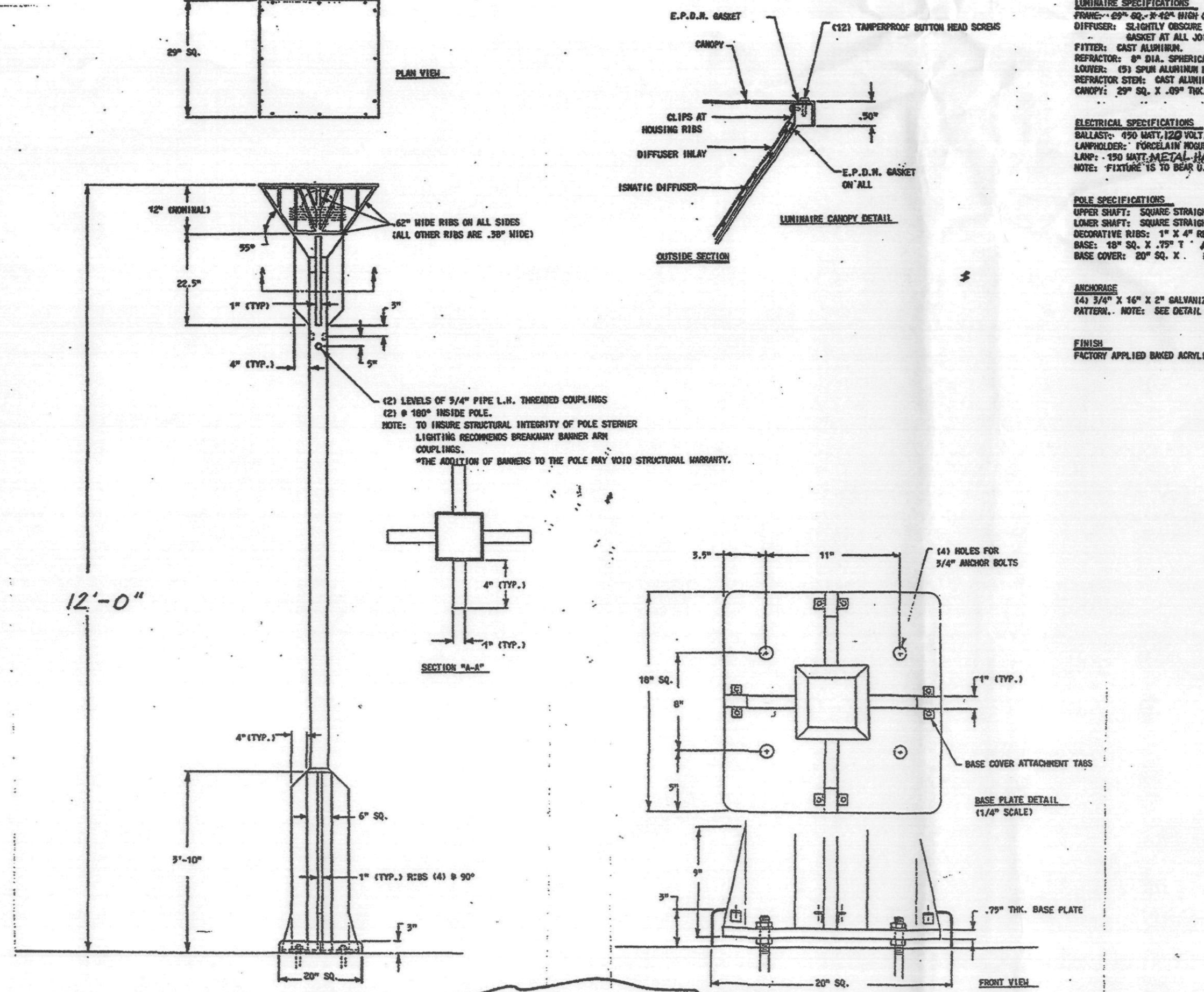
Housing: One piece die-cast low copper aluminum in a cylindrical shape with integral cooling fins over the entire length, and .100" minimum wall thickness. One piece silicone gasket between housing and lens frame.
Lens Frame: One piece die-cast low copper aluminum with integral cooling fins over the entire length, and .100" minimum wall thickness. Matte with housing to create a continuous cylindrical shape. 1/8" thick clear tempered glass lens is sealed to the lens frame by a one piece stamped silicone gasket. Lens frame secures to housing by two stainless steel recessed captive allen-head screws.
Swivel: Die-cast aluminum with integral locking teeth providing 6° adjustment intervals and 1/2" NPSM plus solid brass locknut for mounting. Clear anodized prior to chrome conversion coating for added corrosion resistance. Fasteners: Stainless steel, recessed captive allen-head screws.
Reflector: Specular Alzak® aluminum optical components mounted to aluminum frame.
Socket: 4KV porcelain medium base (T-10 Incandescent and H.I.D.), T4 Mini-can (Halogen), 13w GX23-2 2-pin base, 40w GX24q-3 4-pin base (Fluorescent).
Ballast: All electrical components are UL and CSA recognized with leads extending out of the swivel splice compartment. Normal power factor ballast rated 300% starting (13 watt Twin Tube Fluorescent); High power factor ballast rated 0% starting (42 watt Triple Tube Fluorescent); Reactor - High power factor with starting temperatures of -40°F for HPS and -20°F for MH lamp modes. For MH/I20 volt, a step-up transformer is provided. For HPS/I27 volt, a step-down transformer is provided (H.I.D.).
Finish: Super TGIC thermose polyester powder coat paint, 2.5 mil nominal thickness, applied over a chrome conversion coating; 2500 hour salt spray test, endurance rating. Standard colors are Black, Dark Bronze, Light Gray, Platinum Silver, Verde Green or White. Custom colors are available and subject to additional charges, minimum quantities and longer lead times. Consult representative.
Certification: UL Listed to U.S. and Canadian safety standards for wet locations. Fixture manufacturer shall employ a quality program that is registered to ISO 9001 standard.
CAUTION: Fixture must be grounded in accordance with local codes or the National Electrical Code. Failure to do so may result in serious personal injury.

ASU ARIZONA STATE UNIVERSITY
Financial Aid Notification Guide
2002-2003 Fall and Spring Semesters

Student Financial Assistance

This guide provides complete instructions and details regarding your Financial Aid Notification (FAN).

BUILDING B HARDSCAPE
P-1 HARDSCAPE ONLY



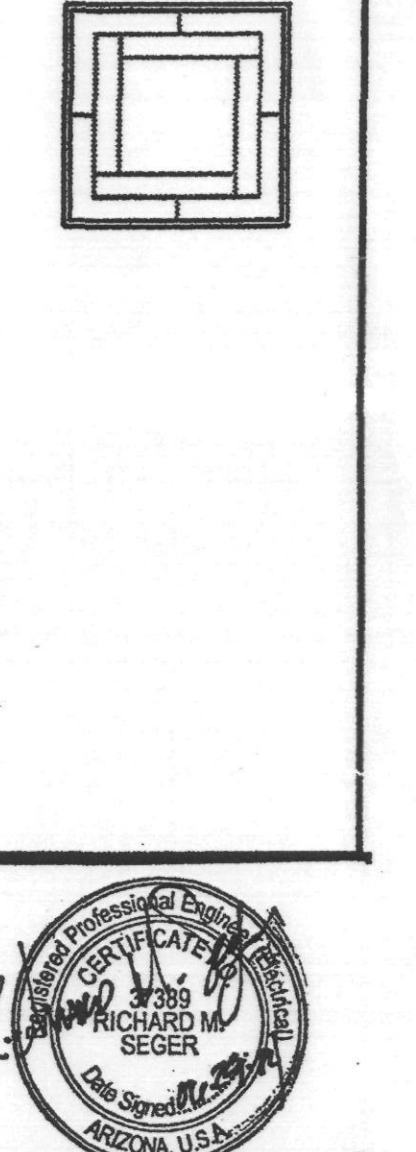
Perry Jones
APPROVED
FINAL PLANS PLANNING
8.6.04

ARIZONA REVISED STATUTES 32-1129.01.
NOTICE OF EXTENDED CERTIFICATION AND APPROVAL PERIOD PROVISION.
This contract allows the owner to certify and approve billings and estimates within 30 days after the billings and estimates are received from the contractor.
NOTICE OF EXTENDED PAYMENT PROVISION.
This contract allows the owner to make payments within 30 days after certification and approval of billings and estimates.

T M A D Engineers
Mechanical and Electrical Consulting Engineers
7250 N. 16th Street, Suite 200
Phoenix, Arizona 85020
(602) 371-1333
Job No. 560X-00X.00

727 E. MARYLAND AVE
Phoenix, AZ 85014
phone: 602.266.6202
facsimile: 602.265.6122

THE PROMENADE - PHASE II
SCOTTSDALE, AZ
FOR THE PEDERSON GROUP



DATE ISSUED	
DRAWN BY	
CHECKED BY	
PROJECT NO.	
CADD FILE	
SCALE:	
DRAWING NO.	ED.3

RETAIL BLDGS & HARDSCAPE
353-PK-MB2-LVR **GM-4** **Lumière**

DESCRIPTION
 An ultra-compact light weight line voltage fixture with integrated 120V electronic transformer for use with 12V MR16 lamps. Its unique, patented design combines durability for architectural and landscaping use with versatility for accent, mood and general illumination. Fully adjustable from all mounting positions, with patented anti-siphon construction to prevent water entry through lead wires. Built-in adjustable glass shield and recessed light source reduce glare without impacting lamp function. Protected by U.S. patent no. 6,559,091.

SPECIFICATION FEATURES
 A-Finish: Fixture constructed from a non-corrosive high temperature composite material selected for its ability to withstand the rigors of the landscape environment. Black finish.
 B-Lens: Tempered glass, secured with a high temperature adhesive.
 C-Gasket: Housing and hood are sealed with a high temperature "O" ring gasket.
 D-Housing: Injection molded from high temperature composite material. Stainless steel and brass hardware.
 E-Hood: Injection molded from high temperature composite material. Hood narrows for easy re-lamping.
 F-Lenses: (By choice. See sheet back.) Adjustable stem equipped with standard 1/2" NPS threaded male fitting. Allows full range of aiming from any mounting position.
 G-Socket: Ceramic socket with 250° C "Teflon" coated lead wires.
 H-Neutral Transformer: Electronic transformer sealed in stem assembly for cool operation and maximum efficiency.
 I-Weather: Compatible with dimmers and control systems designed for use with electronic transformers.
 J-Labels: UL listed, standard wet label, CUL certified.

LAGUNA 353
50W MR16
LINE VOLTAGE
AREA/ACCENT

ORDERING INFORMATION
 SAMPLE NUMBER: 213 BK
 Features: 353, Finish: BK, Accessories: (Other Separately)

WWW.COOPERLUMINATING.COM

BLOGARD ONLY **MHF-1** **CFL**
Compact Floodlights

KIM LIGHTING
 Type: **BD-CFL/BLP-JW/BL-P**
 Job: **TOP SHIELD**
 Fixture Catalog number: **CFL-LS-MH100-BP**
 Mounting Options: **TOP SHIELD**

Specifications
 Dimensions: CFL Models 50 to 70 watt H.I.D. Medium Base Lamps 13 to 42 watt Compact Fluorescent 60 watt Incandescent 150 watt Halogen
 Maximum weight: 13 lb

Specifications
 Housing: One piece die-cast low copper aluminum in a cylindrical shape with integral cooling fins over the entire length, and .100" minimum wall thickness. One piece silicone gasket between housing and lens frame.
 Lens Frame: One piece die-cast low copper aluminum with integral cooling fins, .100" minimum wall thickness, mates with housing to create a continuous cylindrical shape. 1/4" thick clear tempered glass lens is sealed to the lens frame by a one piece stamped silicone gasket. Lens frame secures to housing by two stainless steel recessed captive allen-head screws.
 Swivel: Die-cast aluminum with integral locking teeth providing 6° adjustment intervals and 1/2" NPS plus solid brass locknut for mounting. Clear anodized prior to chrome conversion coating for added corrosion resistance.
 Fasteners: Stainless steel, recessed captive allen-head screws.
 Reflector: Specular Alzak® aluminum optical components mounted to aluminum frame.
 Socket: 40V porcelain medium base (T-10 Incandescent and H.I.D.), T-4 Mini-can (Halogen), 13w GX23-2 2-pin base, 42w GX24q-3 4-pin base (Fluorescent).
 Ballasts: All electrical components are UL and CSA recognized with leads extending out of the swivel splice compartment. Normal power factor ballast rated 320° ballast rated 0° starting (42 watt Triple Tube Fluorescent); Reactor - High power factor with starting temperatures of 40°F; for HPS and 20°F; for MH lamp modes. For MH/120 volt, a step-up transformer is provided. For HPS/277 volt, a step-down transformer is provided (E.I.D.).
 Finish: Super TGIC thermoset polyester powder coat paint, 2.5 mil nominal thickness, applied over a chrome conversion coating 2000 hour salt spray test endurance rating. Standard colors are Black, Dark Bronze, Light Gray, Platinum Silver, Verde Green or White. Custom colors are available and subject to additional charges, minimum quantities and longer lead times. Contact representative.
 Certifications: UL Listed to U.S. and Canadian safety standards for wet locations. Fixture manufacturer shall employ a quality program that is registered to ISO 9001 standards.
 CAUTION: Fixture must be grounded in accordance with local codes or the National Electrical Code. Failure to do so may result in serious personal injury.

FIGURE TO BE PROVIDED W/ TOP SHIELD

RETAIL BLDGS & HARDSCAPE **MHF-2**
TFL
METAL HALIDE
175/250W
15' to 30' Mounting

ORDERING SEQUENCE
 ORDER NUMBER: **TFL 250W TAZ-120**
 WEIGHT: **250W**
 OPTIONS (Factory Installed): **TAZ-120**

Specifications
 Housing: Compact NEMA heavy duty construction. Die-cast aluminum housing and front cover. Front cover is blinged for easy internal access. Lens is heavy duty, thermal shock-resistant clear tempered glass. Standard finish is dark bronze TPO polyester powder electrochemically applied and oven cured.
 OPTICAL: One piece hydroformed, anodized aluminum provides beam light patterns with 2 position adjustable socket. Optic chamber is sealed to inhibit entrance of outside contaminants.
 ELECTRICAL: Electrical components are mounted to the cast aluminum housing promoting maximum heat dissipation. Ballast, 100% copper wound and factory tested, is constant voltage auto-transformer.
 INSTALLATION: Corrosion resistant, heavy duty painted steel mounting yoke with repainting step and degree aiming slots is standard. All internal wires are stainless steel.
 LISTING: UL 1572 listed suitable for wet locations.
 SOCKET: Porcelain, vertically oriented mogul base socket with copper alloy nickel plated screw shell and center contact. UL listed 1500W - 600V, 40V padlock rated.

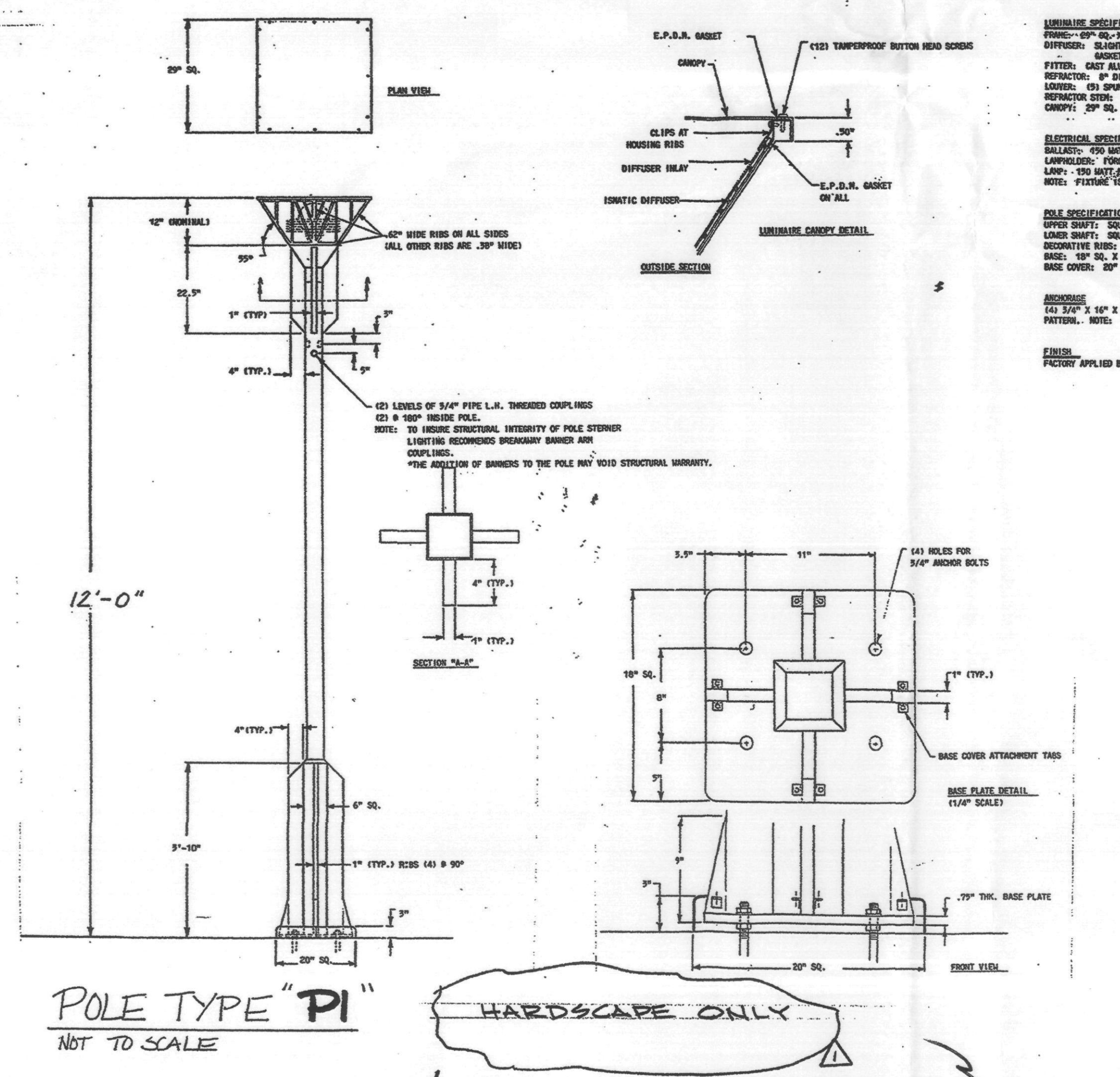
LITHONIA HI-TEK
 A DIVISION OF LUMINEX LIGHTING

ASU ARIZONA STATE UNIVERSITY
Financial Aid Notification Guide
 2002-2003 Fall and Spring Semesters

Student Financial Assistance

This guide provides complete instructions and details regarding your Financial Aid Notification (FAN).

BUILDING B HARDSCAPE
P-1 HARDSCAPE ONLY



Per Jay Lewis
APPROVED
FINAL PLANS PLANNING
 DATE: **8.6.04**

ARIZONA REVISED STATUTES 32-1128.01.
 NOTICE OF EXTENDED CERTIFICATION AND APPROVAL PERIOD PROVISION.
 This contract allows the owner to certify and approve billings and estimates within 30 days after the billings and estimates are received from the contractor.
 NOTICE OF EXTENDED PAYMENT PROVISION.
 This contract allows the owner to make payments within 30 days after certification and approval of billings and estimates.

T M A D Engineers
 Mechanical and Electrical Consulting Engineers
 7250 N. 16th Street, Suite 200
 Phoenix, Arizona 85020
 (602) 371-1333
 Job No. 560X-00X.00

727 E. MARYLAND AVE
 Phoenix, AZ 85014
 phone: 602.266.6202
 facsimile: 602.265.6212

THE PROMENADE - PHASE II
 FOR THE PEDERSON GROUP

SCOTTSDALE, AZ

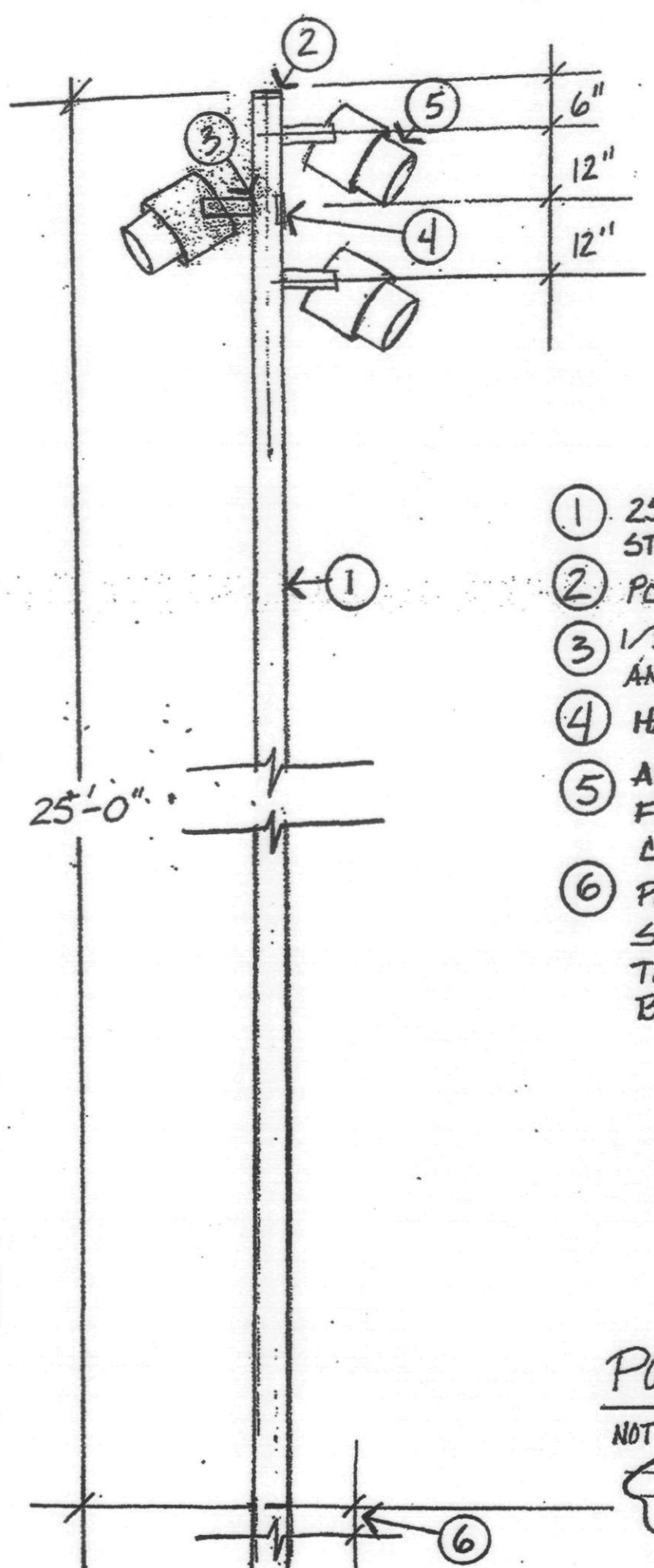
08/14/04

COMMENTS
 REVISIONS

SCHEMATIC
 DESIGN DEVELOPMENT
 CONSTRUCTION DOCUMENTS
 BID/PRICING PACKAGE
 BUILDING DEPT. APPROVAL

DATE ISSUED
 DRAWN BY
 CHECKED BY
 PROJECT NO.
 CADD FILE
 SCALE:
 DRAWING NO.

ED.3



- ① 25' SQUARE PAINTED STEEL POLE.
- ② POLE CAP
- ③ 1/2" THREADED RECEIVER AND GROMMET
- ④ HANDHOLE
- ⑤ ALTMAN THEATRICAL FIXTURE, (SEE ATTACHED CUT SHEETS)
- ⑥ POLE SET IN CONCRETE SIDE WALK. DEPTH TO BE DETERMINED BY POLE MFR.

POLE TYPE "P2"
NOT TO SCALE

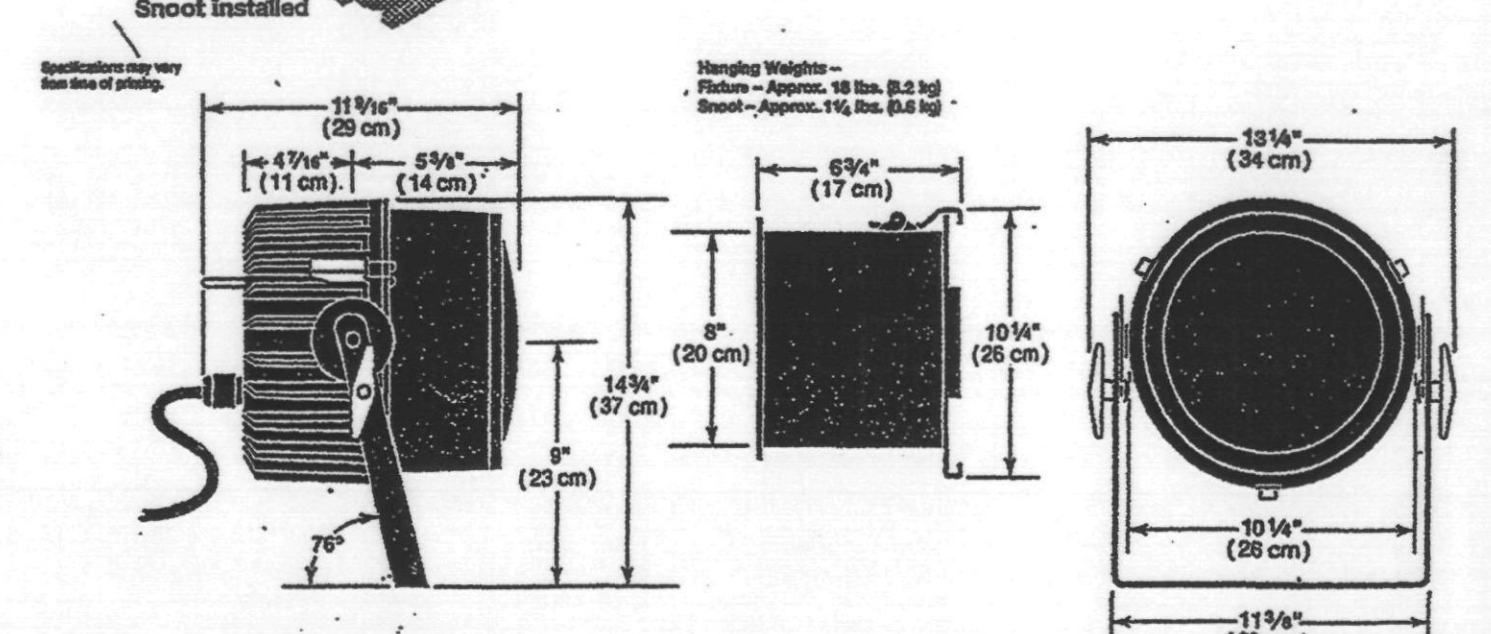
ALTMAN

Catalog number: **P2**
OUTDOOR-PAR64

1000 Watts PAR 64 portable wet location spotlight/floodlight



OUTDOOR-PAR64
The OUTDOOR-PAR luminaires are designed for portable or permanent installations in wet locations for use with PAR64 sealed beam lamps. The housing is constructed of cast aluminum for maximum durability. The lens holder and external hardware are made of stainless steel. The unit can be externally rotated to allow for focusing of the lamp. The positive locking handles are designed for easy positioning of the fixture. The yoke allows for stainless mounting or can be hung with an optional pipe clamp. A separate aluminum handle is also provided on the rear for added convenience. All removable components have gaskets to insure a watertight seal. All surfaces are finished with a highly durable, low gloss baked enamel paint. The wiring is composed of 24" high-temperature leads in an overall high-temperature, waterproof, sunlight resistant jacket through a gasketed liquid tight strain relief. The lens is made of other borosilicate glass to withstand high temperatures and tempered for maximum strength. The optional hood/cover frame holder accommodates standard gel and dichroic color media.



ALTMAN
THE QUALITY OF LIGHT

Altman Stage Lighting Company, Inc.
57 Alexander Street, Yonkers, NY 10701
914-478-7987
212-869-7777
FAX: 914-989-7304

Recessed luminaires with white tempered glass diffusers. Suitable for wet locations.
Color: Black or white.
2284 has integral electronic transformer and includes 1142 lamp.
2284 Opening: 9 1/2" x 2 1/4" x 4"
2285P Opening: 9 1/2" x 2 1/4" x 4"
2287P Opening: 11 1/4" x 2 1/4" x 4"

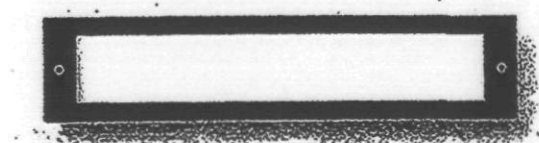
Lamp	Lumen A	B	C
2284 Transformer	1 12W/55,12V	284	8 2% 4%
2285P Recessed	1 9W/FL	800	9% 2% 4%
2287P Recessed	1 12W/FL	900	11% 2% 4%

Recessed luminaires with die cast aluminum covers and etched tempered diffusers. Suitable for wet locations.
Color: Black or white.
2283 has integral electronic transformer and includes 1142 lamp.
2283 Opening: 9 1/2" x 2 1/4" x 4"
2285P Opening: 9 1/2" x 2 1/4" x 4"
2287P Opening: 11 1/4" x 2 1/4" x 4"

Lamp	Lumen A	B	C
2283 Transformer	1 12W/55,12V	284	8 2% 4%
2285P Recessed	1 9W/FL	800	9% 2% 4%
2287P Recessed	1 12W/FL	900	11% 2% 4%

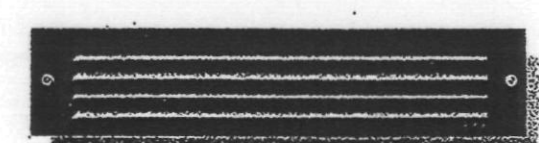
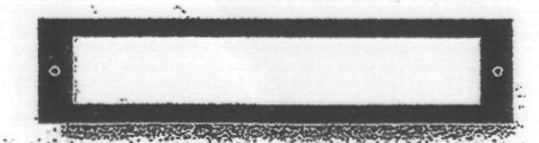
ST-1

HARDSCAPE ONLY



ST-2

BLDG A-D ONLY



Recessed luminaires with white tempered glass diffusers. Suitable for wet locations.
Color: Black or white.
2284 has integral electronic transformer and includes 1142 lamp.
2284 Opening: 9 1/2" x 2 1/4" x 4"
2285P Opening: 9 1/2" x 2 1/4" x 4"
2287P Opening: 11 1/4" x 2 1/4" x 4"

Lamp	Lumen A	B	C
2284 Transformer	1 12W/55,12V	284	8 2% 4%
2285P Recessed	1 9W/FL	800	9% 2% 4%
2287P Recessed	1 12W/FL	900	11% 2% 4%

Recessed luminaires with die cast aluminum covers and etched tempered diffusers. Suitable for wet locations.
Color: Black or white.
2283 has integral electronic transformer and includes 1142 lamp.
2283 Opening: 9 1/2" x 2 1/4" x 4"
2285P Opening: 9 1/2" x 2 1/4" x 4"
2287P Opening: 11 1/4" x 2 1/4" x 4"

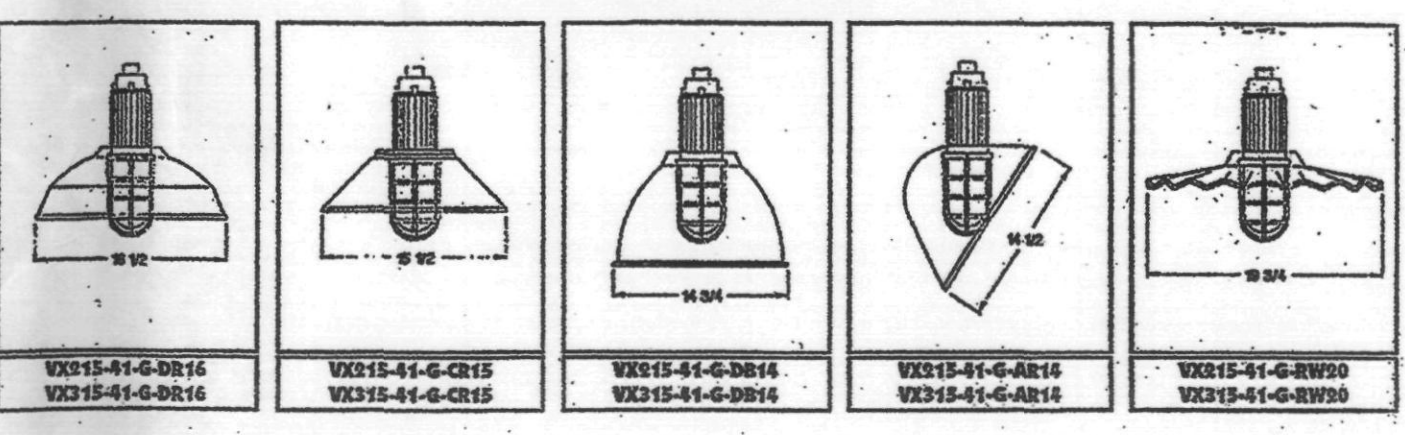
Lamp	Lumen A	B	C
2283 Transformer	1 12W/55,12V	284	8 2% 4%
2285P Recessed	1 9W/FL	800	9% 2% 4%
2287P Recessed	1 12W/FL	900	11% 2% 4%

ALTMAN

HARDSCAPE ONLY

TM-1

HARDSCAPE ONLY



Model	Mounting
VX215-41-G-DR14	Flush Mount
VX215-41-G-DR16	Flush Mount
VX215-41-G-DR18	Flush Mount
VX215-41-G-DR20	Flush Mount
VX215-41-G-DR22	Flush Mount

TIGHT BALLASTED FIXTURE ORDERING GUIDE

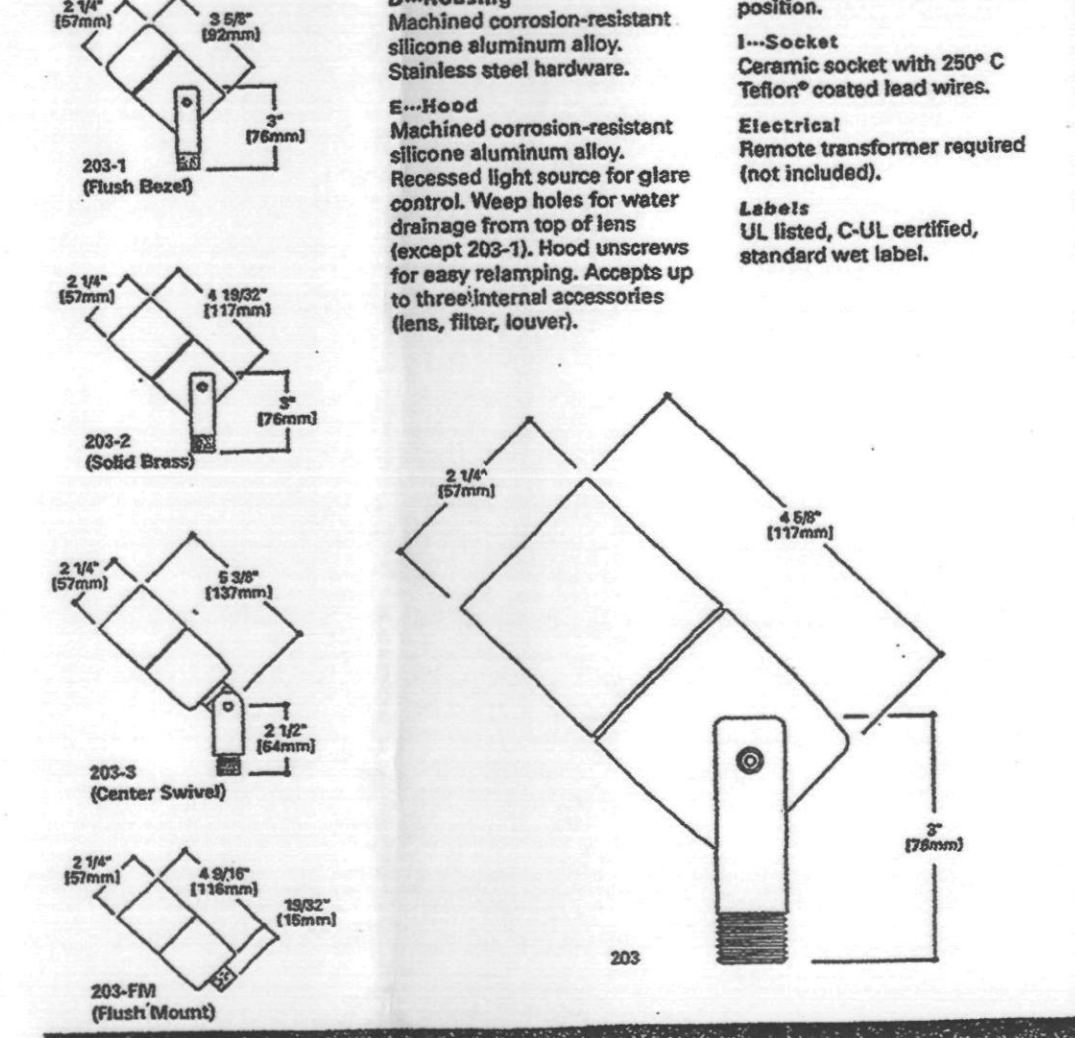
Fixture Series	Optional Globe Type	Guard Option	Ballast Type	Voltage	Color Finish Option	Reflector Option	Reflector Color
VP215-41	Standard fixture includes a 9 1/2" clear glass globe. Select one of the following soffits for alternatives:	NO!	VR2-CF Universal Voltage VR2-CF 240V Canadian	120V/277V Universal Voltage 240V	G0 Black G1 White G2 Red G3 Yellow G4 Blue G5 Green G6 Brown G7 Venetian G8 Dark Bronze G9 Silver G10 Dark Green	NO! DR6 16" Dome DR7 17" Cone Reflector DR8 14" Deep Bowl DR9 14" Angle DR10 80" Radial Wave	Black White Red Yellow Blue Green Brown Venetian Dark Bronze Silver Dark Green

EXAMPLE OF A TYPICAL ORDER: **VP215-41-P-G-VB49-CF-120-G3-AR14-G2**

THE SPERO ELECTRIC CORPORATION 1705 NOBLE ROAD CLEVELAND, OHIO 44112
PHONE: (216) 851-3300 FAX: (216) 851-0300 <http://www.sperolighting.com> E-13

DESCRIPTION

An ultra-compact low voltage fixture for use with 120 MR16 lamps. Its contemporary design combines durability for architectural and landscaping use with versatility for accent, flood and general illumination. Fully adjustable from all mounting positions, with built in Dynalon Protection System (DPS) to prevent water entry through lead wires. Recessed light enclosure reduces glare without impairing lamp function.



ORDERING INFORMATION
TABLE NUMBER: 203 81-11"

Fixture	Finish	Options	Accessories
203	BK	TM05	(Order Separately)

Lumière



CAMBRIA 203
LOW VOLTAGE AREA/ACCENT

GARD-N-POST



WHAT'S NEW

GARD-N-POST Low Profile Support for Outdoor Light Fixtures

Saves Time - Convenient - Safe - 4 colors
In addition to the grounded metal building assembly, GARD-N-POST includes a cap to plug the opening on top. In case you install only a wiring device and not a fixture.

Two knockouts in the removable insert allow for the installation of conduit or fittings. You can install an outdoor light fixture OR a GFCI wiring device with a waterproof cover or BOTH!



Colors:
White #GP19W Black #GP19B
Green #GP19G
Boxed #GP19R

Installed metal reducer and grounding bushing with ground wire included (with 1/2" NPT female threads)
Removable UL listed cover for easy wire installation
Height: 19.5"
Molded-in stabilizers provide rigid support for the GARD-N-POST. No assembly required; no parts to lose!

HARDSCAPE ONLY

BLDG B HARDSCAPE

<http://www.aiffittings.com/wlnw33a.htm>

9/10/2002

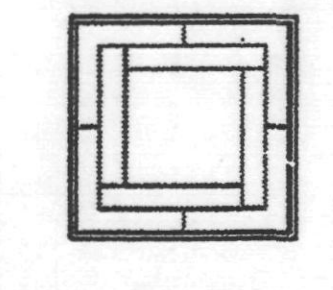
ARIZONA REVISED STATUTES 32-1129.01.

NOTICE OF EXTENDED CERTIFICATION AND APPROVAL PERIOD PROVISION:
This contract allows the owner to certify and approve billings and estimates within 30 days after the billings and estimates are received from the contractor.

NOTICE OF EXTENDED PAYMENT PROVISION:
This contract allows the owner to make payments within 30 days after certification and approval of billings and estimates.

T M A D Engineers
Mechanical, and Electrical Consulting Engineers
7250 N. 16th Street, Suite 200
Phoenix, Arizona 85020
(602) 371-1333
Job No. 580X-00X.00

THE PROMENADE - PHASE II
SCOTTSDALE, AZ
FOR THE PEDERSON GROUP



DO NOT WRITE IN THESE SPACES

DATE	REVISIONS
07/24/04	BID/REV/REVISION'S

DATE	ISSUED

DATE	ISSUED

ED.4