



4675 - Capri\*  
(6075) "New"



4624 - Sky Blue



4601 - Pacific Blue\*  
(6001)



4617 - Royal Blue\*  
(6017)



4641 - Sapphire Blue



4646 - Captain Navy\*  
(6046)



4626 - Navy\*  
(6026)



4678 - Marine Blue\*  
(6078) "New"



4679 - Ocean Blue\*  
(6079) "New"



4652 - Mediterranean Blue\*  
(6052)



4653 - Mediterranean Tweed\*  
(6053)



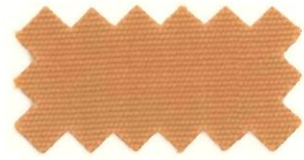
4623 - Aquamarine\*  
(6023)



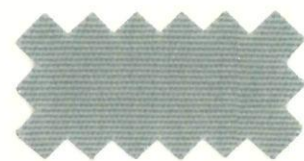
4610 - Turquoise\*  
(6010)



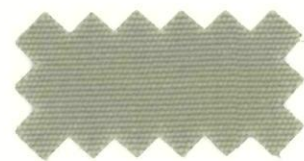
4643 - Persian Green\*  
(6043)



4677 - Tuscan  
"New"



4673 - Spa  
"New"



4668 - Aspen



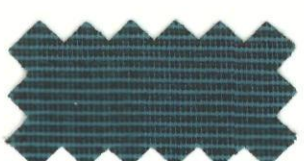
4611 - Sea Spray



4600 - Erin Green



4645 - Sea Grass Green



4647 - Persian Tweed\*  
(6047)



4674 - Wheat  
"New"



4676 - Cocoa  
"New"



4671 - Fern



4655 - Alpine\*  
(6055)



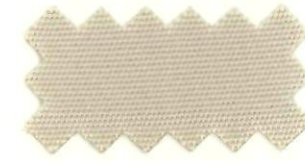
4656 - Spruce\*  
(6056)



4637 - Forest Green\*  
(6037)



4605 - Hemlock Tweed\*  
(6005)



4633 - Linen\*  
(6033)



4658 - Brass



4614 - Tan



4622 - Terra Cotta



4666 - Logo Red\*  
(6066)



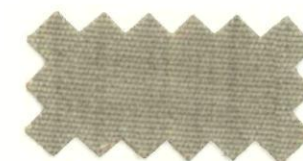
4651 - Silver\*  
(6051)



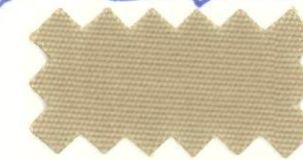
4642 - Oyster\*  
(6042)



4604 - Natural\*  
(6004)



4672 - Heather Beige\*  
(6072)



4628 - Toast\*  
(6028)



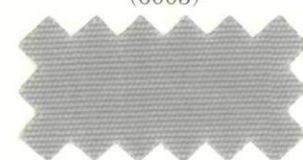
4627 - Salmon



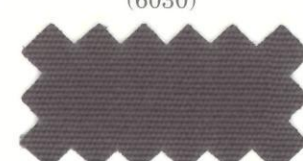
4667 - Mahogany



4603 - Jockey Red\*  
(6003)



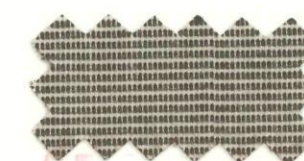
4630 - Cadet Grey\*  
(6030)



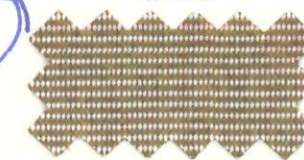
4649 - Plum\*  
(6049)



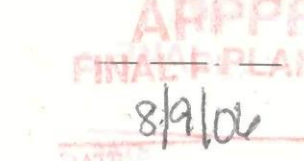
4638 - Coral



4654 - Linen Tweed\*  
(6054)



4616 - Mocha



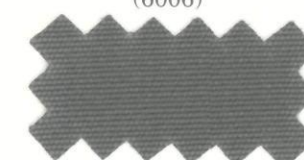
4618 - Walnut Brown



4631 - Burgundy\*  
(6031)



4606 - Dubonnet Tweed\*  
(6006)



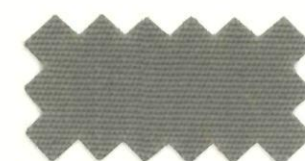
4644 - Charcoal Grey



4665 - Concord\*  
(6065)



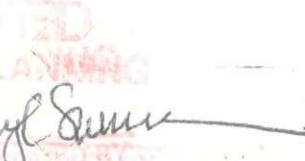
4635 - Buttercup



4648 - Taupe\*  
(6048)



4620 - Beige



4621 - True Brown\*  
(6021)



4640 - Black Cherry



4607 - Charcoal Tweed\*  
(6007)



4608 - Jet Black\*  
(6008)



4609 - Orange



4602 - Sunflower Yellow

228. SA. 2008  
APPROVED  
FINAL PLANS PLANNING  
8/9/08  
Ouyf Sami

\* These patterns available in 60" (152.4 cm) widths. Style # for 60" (152.4 cm) widths denoted in ( ).





### Specifications

- 46 inches wide, 9.25 ounces per square yard.
- Solution dyed to give excellent fade and weather resistance.
- 116.8 centimeters, 314 grams per square meter.
- Also available in wide variety of stripes.

### Care & Cleaning

Sunbrella® fabric should be cleaned regularly before substances such as dirt, roof particles, etc. are allowed to accumulate on and become embedded in the fabric. The fabric can be cleaned without being removed from the installation. Simply brush off any loose dirt, roof particles, etc.; hose down and clean with a mild solution of mild soap in lukewarm water (no more than 100° F). Rinse thoroughly to remove soap. **DO NOT USE DETERGENTS.** Allow to air dry.

For more stubborn cases: Soak the fabric for approximately twenty minutes in a solution of no more than 1/2 cup (4 oz.) of a non-chlorine bleach and 1/4 cup (2 oz.) mild soap per gallon of water at approximately 100° F. Rinse thoroughly in cold water to remove all of the soap. Note: Excessive soaking in non-chlorine bleach can deteriorate sewing threads. This method of cleaning may remove part of the water repellency and the fabric should receive an application of an air-curing fluorocarbon water repellent treatment, such as 303 Hi Tech Fabric Guard, if water repellency is a factor.

Sunbrella® is made from 100% solution dyed acrylic fiber which is thermoplastic. **DO NOT SUBJECT TO EXCESSIVE HEAT.** When Sunbrella® fabric is stored, it should be cleaned, allowed to air dry and stored in a dry, well ventilated area.

### LIMITED WARRANTY For Sunbrella® Awning and Marine Fabric

This limited warranty is valid only if a copy of the invoice for the item purchased is submitted showing date of original purchase.

**What is Covered?** This limited warranty covers the fabric becoming unserviceable because of loss of color or strength from normal usage and exposure conditions, including sunlight, mildew and atmospheric chemicals. Consumer is responsible for normal care and cleaning of the fabric. This warranty covers fabric only. Glen Raven's liability is expressly limited to this warranty.

**How Long is the Coverage Period?** This limited warranty coverage runs for five years from the date of original installation.

**What Will Glen Raven Do?** Glen Raven will supply new fabric free to replace the fabric that becomes unserviceable.

**How Can You Get Service?** Call the dealer or retailer from whom you purchased the product, to inspect the claim. They, in turn, will contact the manufacturer of the item purchased. The manufacturer will then contact Glen Raven and secure replacement fabric for you.




**Glen Raven Custom Fabrics, LLC**  
**1831 North Park Ave.**  
**Glen Raven, NC 27217-1100**  
**(336) 221-2211**  
**Fax: (336) 586-1169**  
**www.sunbrella.com**



® Sunbrella and Glen Raven are registered trademarks of Glen Raven, Inc.

MC 05-622

  
**PHOENIX TENT AND AWNING COMPANY**  
**SINCE 1910**  
**Dick Fillhouer**  
Commercial Sales Manager

2829 E. McDowell Road  
Phoenix, AZ 85008  
www.phoenixawning.com  
ROC 072121

Tel: 602-254-6061  
Fax: 602-254-7622  
ROC 002386



**100% Solution Dyed Acrylic Woven Awning And Marine Fabric**