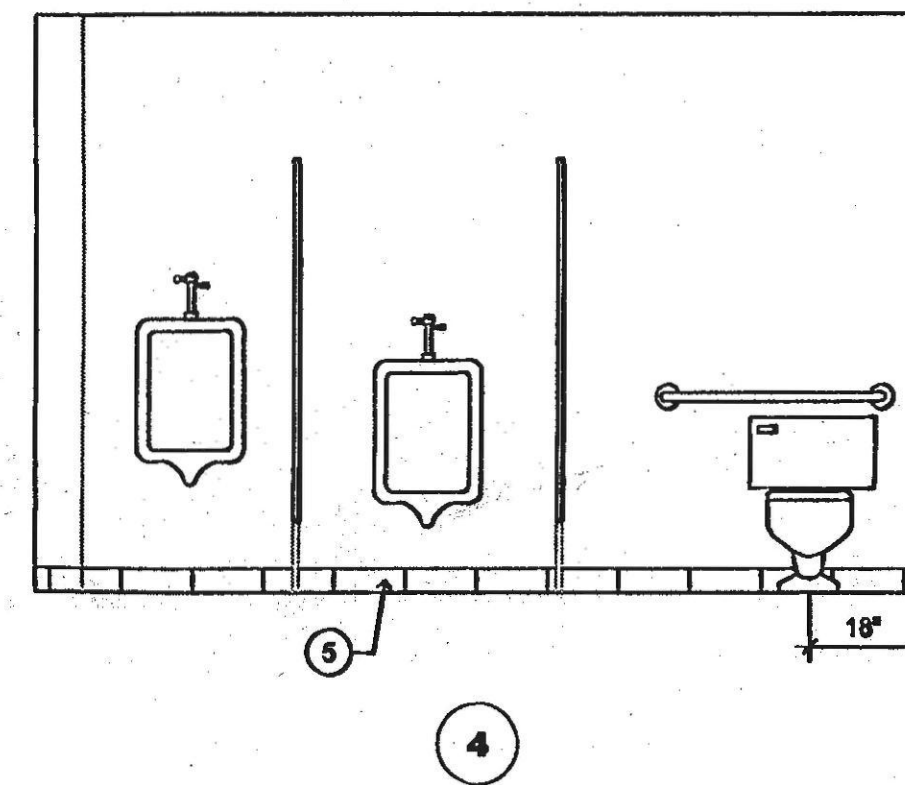
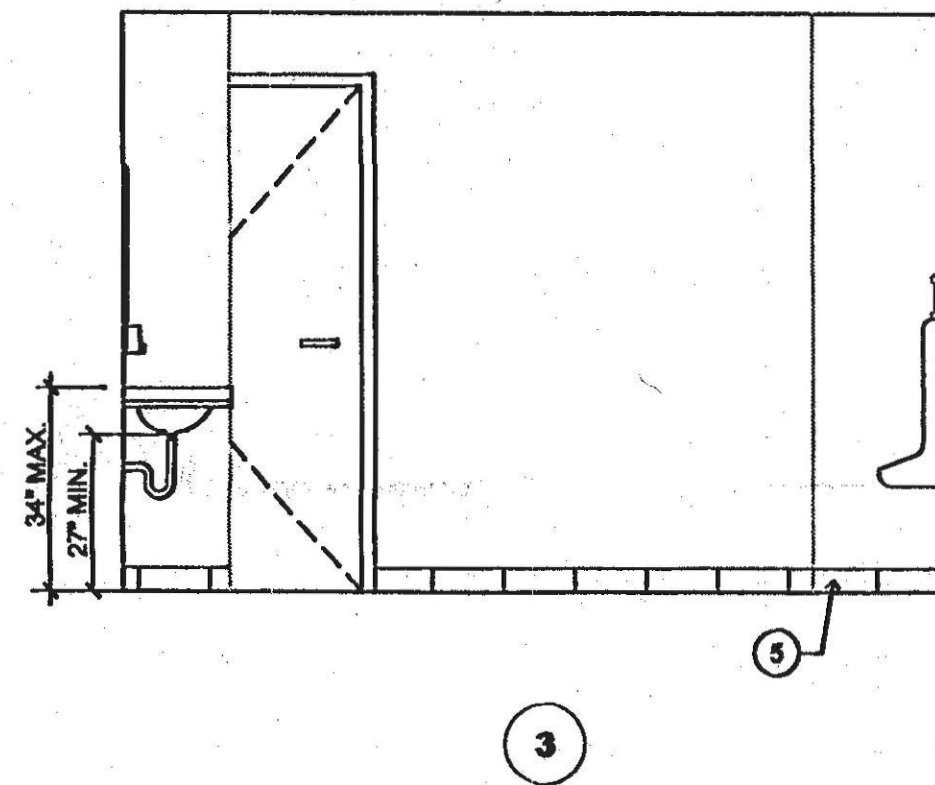
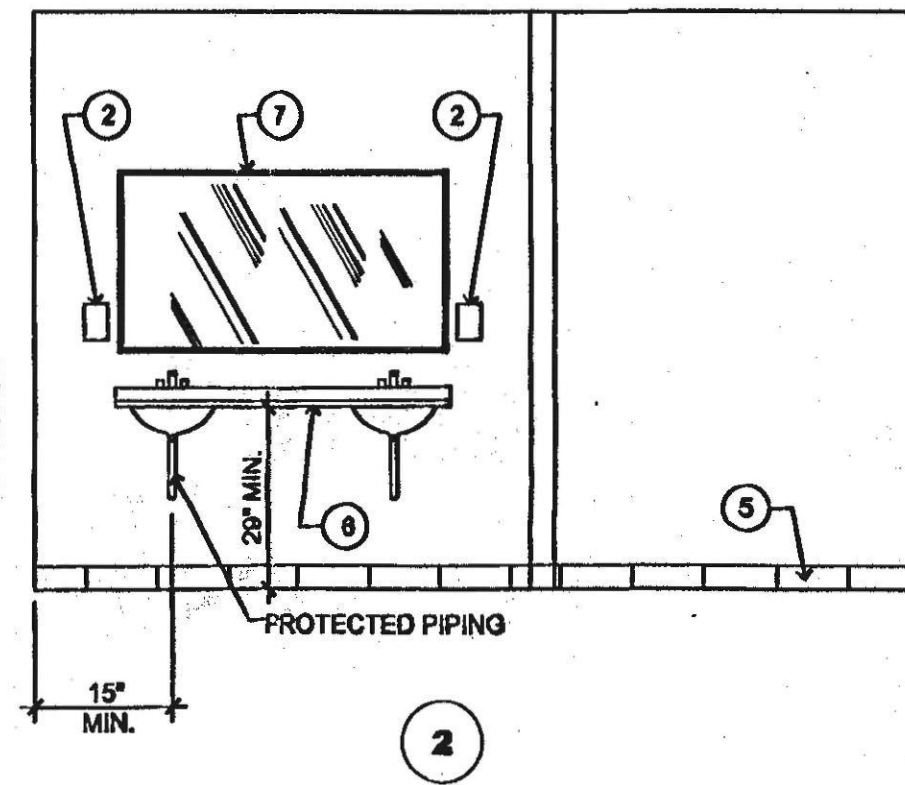
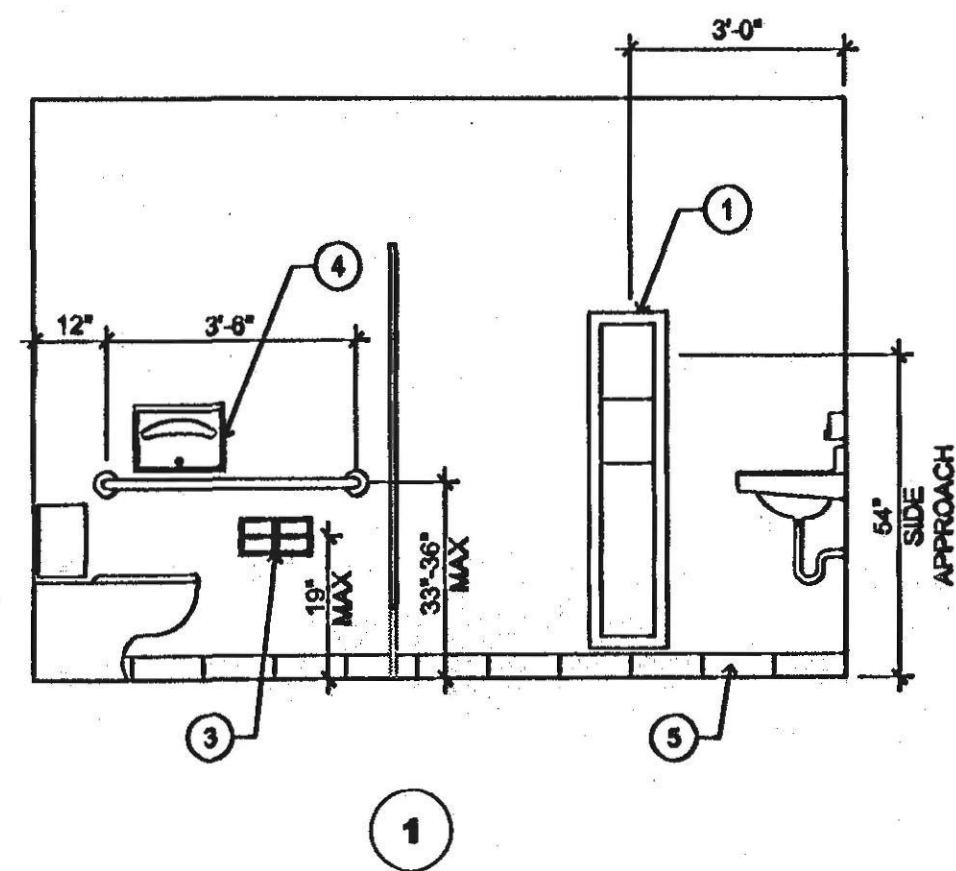


WOMEN'S RESTROOMS

A 3/8" = 1'-0"



MEN'S RESTROOMS

B 3/8" = 1'-0"

KEYED NOTES:

1. PAPER TOWEL DISPENSER, BOBRICK 2B-282, WALL HUNG.
2. SOAP DISPENSER, OWNER SUPPLIED.
3. TOILET PAPER DISPENSER, BOBRICK B76687.
4. SEAT COVER DISPENSER, B-221.
5. 6" X 12" TILE BASE.
6. MOSAIC CERAMIC TILE COUNTER AND INTEGRAL SINK.
7. MIRROR WITH FRAME.
8. METAL TOILET PARTITION WITH BAKED ON ENAMEL PAINT.

GENERAL NOTES:

1. FAUCET CONTROLS SHALL BE OPERABLE WITH ONE HAND AND SHALL NOT REQUIRE TIGHT GRASPING OR TWISTING OF THE WRIST. THE FORCE REQUIRED TO ACTIVATE CONTROLS SHALL BE NO GREATER THAN 5 POUNDS PER SECTION 11158.6.1.4

ARCHITECTURE
Arizapo
DESIGN

8810 E CHAUNCEY LANE
SUITE 105
PHOENIX, AZ 85054
PHONE 480.288.2800
FAX 480.288.2805



sandbar
MEXICAN GRILL

THESE PLANS ARE INSTRUMENTS OF PROFESSIONAL SERVICE AND ARE PROTECTED BY COMMON LAW, STATUTE, AND OTHER LEGISLATIVE RIGHTS INCLUDING COPYRIGHT. THEY ARE NOT TO BE REPRODUCED OR USED IN ANY MANNER WITHOUT THE WRITTEN CONSENT OF A.A. Architects.

DATE

DELTA

SAND BAR
10050 N. SCOTTSDALE ROAD
SUITE 125
SCOTTSDALE, ARIZONA

SHEET TITLE
RESTROOM ELEVATIONS
DETAILS

JOB NO 2823

DATE 01 MAY 2008
SCALE AS NOTED
DRAWN CH
CHECKED CC
SHEET NO

A-3