



Scottsdale Fashion Square-East End
Redevelopment (Restaurants)

17-DR-2007#3

ATTACHMENT #1



SOUTH ELEVATION

LOADING DOCKS

PARKING
GARAGE
ENTRY

WEST RESTAURANT

MALL ENTRY

EAST RESTAURANT

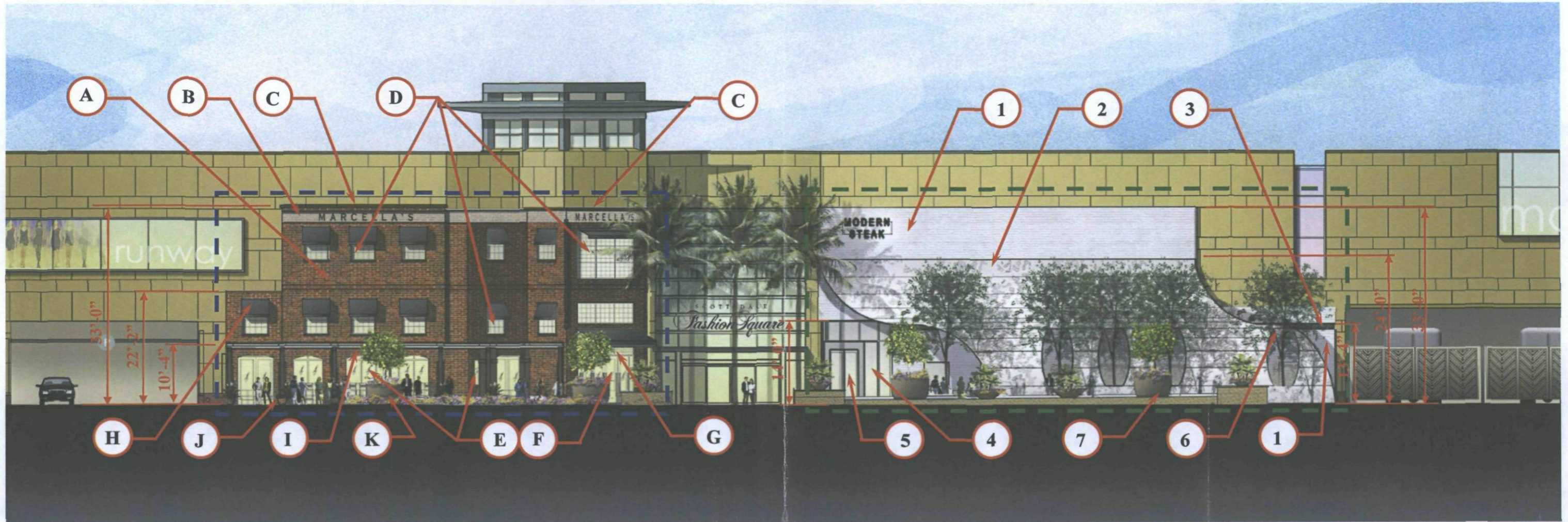
LOADING DOCKS

BARNEYS

APPROVED

10/6/08
DATE

INITIALS



WEST RESTAURANT MATERIALS AND COLORS



- A. BRICK - OLD MILWAUKEE (GLEN GARY BRICKS)
- B. BRICK PAINTED DUNN EDWARDS JAKARTA (DE683)
- C. FYPON CAP WITH LIME STONE FINISH
- D. FROSTED/ETCHED GLASS WINDOWS (FIXED) WITH BLACK STEEL FRAMES
- E. CLEAR GLASS WINDOWS (FIXED) BLACK STEEL FRAMES
- F. GLASS DOORS WITH BLACK STEEL FRAMES
- G. RIBBED GLASS BLOCK WITH LEAD GLASS FRAMES
- H. BLACK CANVAS AWNINGS
- I. HEAVY CEDAR TIMBER RUFF CUT TRELLIS/PERGOLA WITH NATURAL FINISH
- J. PRECAST STONE (RENAISSANCE STONE) BASE
- K. LANDSCAPING PER DEVELOPMENT REVIEW BOARD APPROVAL 17-DR-2007#2

EAST RESTAURANT MATERIALS AND COLORS



- 1. ROMAN BRICK PAINTED SHERMAN WILLIAMS EXTRA WHITE (FLAT) (SW 7006)
- 2. STEEL CANOPY WITH LASER CUT APERTURES, POWDER COATED SHERMAN WILLIAMS EXTRA WHITE (HIGH GLOSS) (SW 7006)
- 3. STEEL PAINTED SHERMAN WILLIAMS EXTRA WHITE (HIGH GLOSS) (SW 7006)
- 4. CLEAR GLASS WINDOWS (LOW-E) WITH BLACK (HIGH GLOSS) STEEL FRAMES AND BLUE WOOD PAINTED BENJAMIN MOORE HUDSON BAY (BM 1680)
- 5. ETCHED GLASS DOORS (CHAIN LINK BY SUZANNE TICK GLASS) WITH BLACK (HIGH GLOSS) STEEL FRAMES AND BLUE WOOD PAINTED BENJAMIN MOORE HUDSON BAY (BM 1680)
- 6. TEXAS EBONY SHADE TREES
- 7. LANDSCAPING PER DEVELOPMENT REVIEW BOARD APPROVAL 17-DR-2007#2

APPROVED
 10/16/07
 DATE INITIALS





17-DR-2007#3
2nd: 10/3/2008