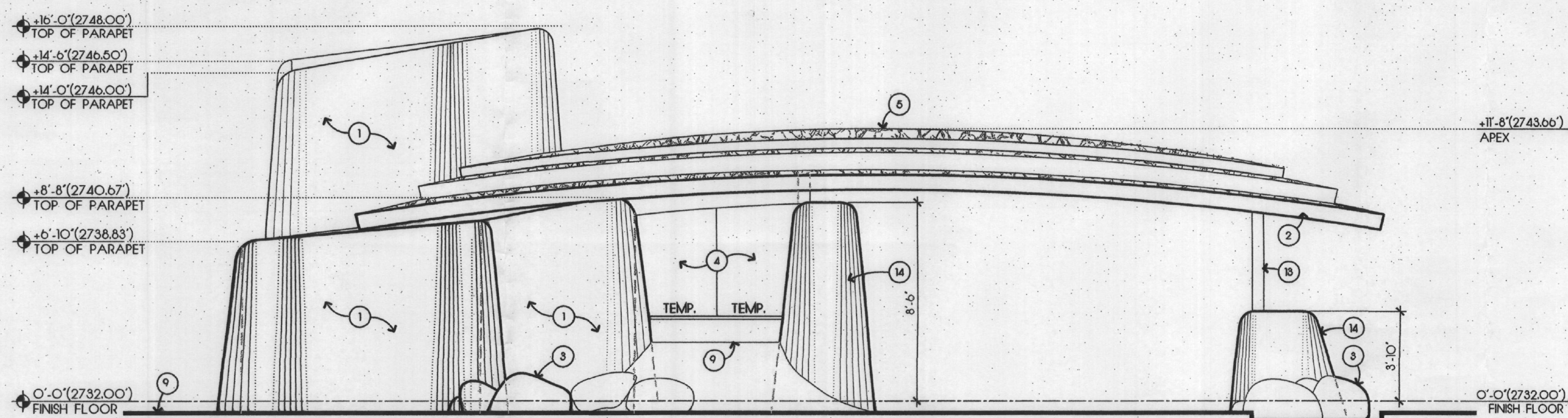
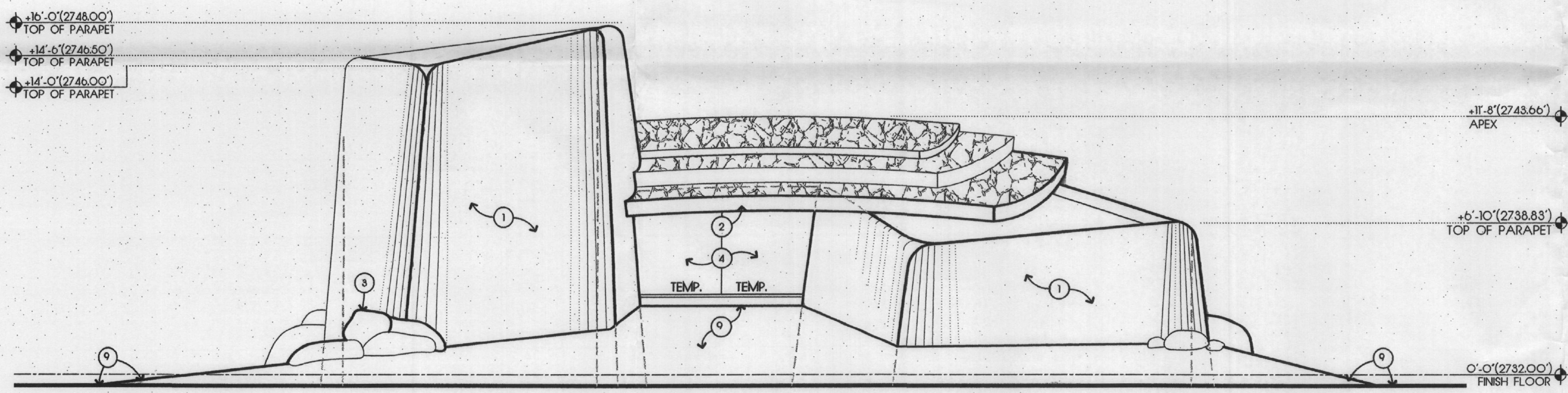


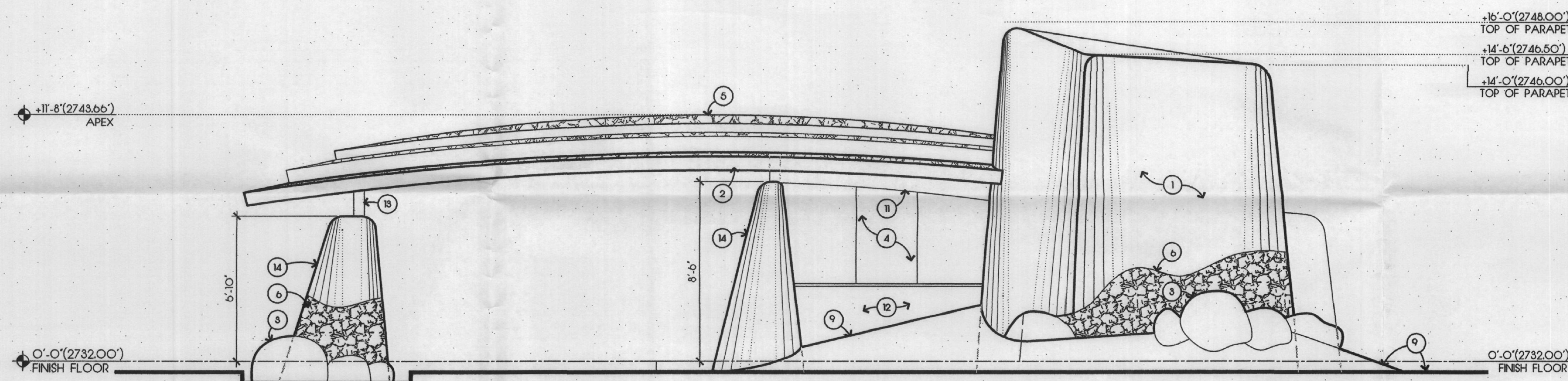
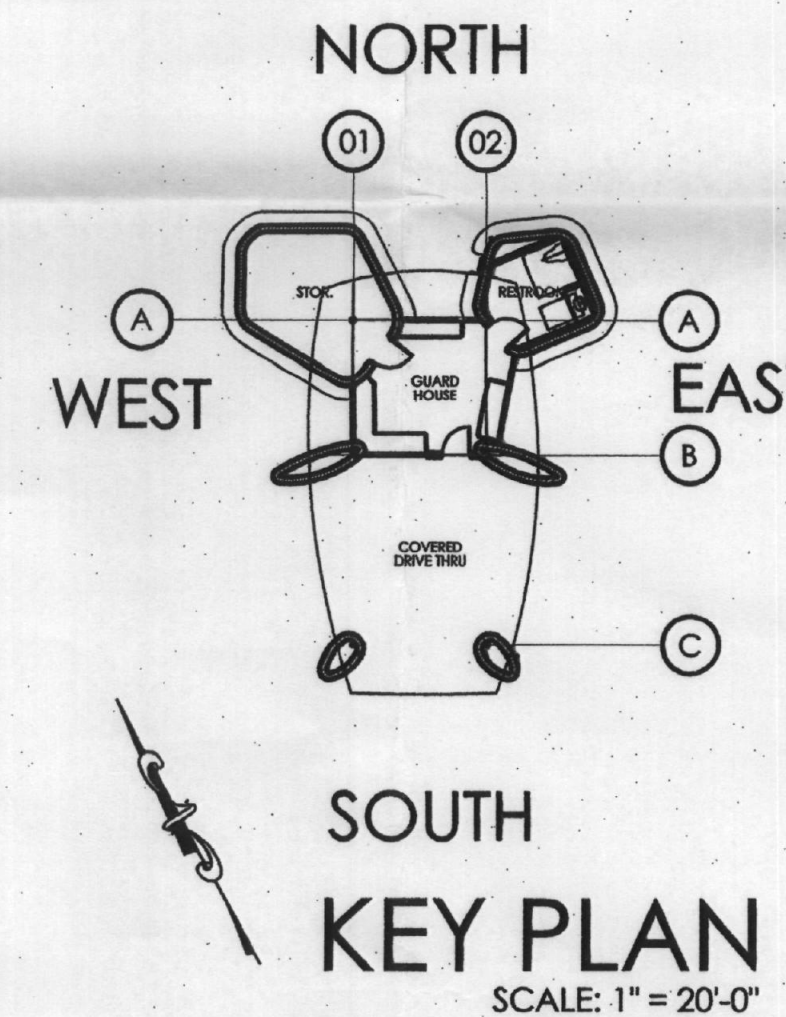
SOUTH ELEVATION



WEST ELEVATION



NORTH ELEVATION



EAST ELEVATION

KEYNOTE:

- 1 WESTERN "ONE KOTE" STUCCO FINISH SYSTEM I.C.B.O. #3899 W/ INTEGRALLY COLORED TROWELED FINISH ELASTOMERIC STUCCO COLOR TO BE SIMILAR TO DUNN EDWARDS DE 6201 RATTAN BASKET LRV 27 TYPICAL UNLESS NOTED OTHERWISE.
- 2 20 OUNCE COPPER FASCIA FINISH TO BE "OLD PENNY".
- 3 NATURAL SITE HARVESTED BOULDERS INTEGRATED WITH THE WALL CONSTRUCTION. MID SET VARIOUS SIZE. GENERAL CONTRACTOR SHALL COORDINATE EXACT PLACEMENT WITH ARCHITECT.
- 4 SINGLE PANE LOW E INSULATED GLASS BUTT CLAZED W/ RECESSED REGLETS.
- 5 ARIZONA FLAGSTONE NATURAL BUFF COLOR SET IN POLYPRO POLYSET I.C.B.O. INC. ER 5595 OVER POLYGLASS 3 LAYER WATER PROOF ROOFING SYSTEM.
- 6 NATURAL STONE VENEER SIMILAR TO APACHE STONE'S DC COBBLE MUD SET MORTAR WASHED WITH COLORED MORTAR TO MATCH BUILDING COLOR.
- 7 PATCH HARDWARE HURGLITE CLASS DOORS. SEE DOOR SYMBOL & SCHEDULE.
- 8 TORCH DOWN MEMBRANE ROOFING WITH CRUSHED ROCK TOPPING/FINISH.
- 9 FINISH GRADE / BERMING.
- 10 NOT USED.
- 11 WESTERN "ONE KOTE" STUCCO FINISH SYSTEM I.C.B.O. #3899 W/ INTEGRALLY COLORED TROWELED FINISH ELASTOMERIC STUCCO ON 2x6 METAL STUD WALL.
- 12 INTEGRALLY COLORED TROWELED FINISH ONE-KOTE STUCCO FINISH ON EPS OVER TY-VEK BUILDING WRAP ON EXTERIOR MASONRY WALLS.
- 13 20 OUNCE COPPER CLAD STRUCTURAL STEEL COLUMN - SEE STRUCTURAL DRAWINGS FOR COLUMN SIZE & TYPE.
- 14 SOLID MASONRY MASSES W/ MASY SHAPED BATTER(S) WITH ELASTOMERIC STUCCO FINISH ON EPS OVER TY-VEK BUILDING WRAP.
- 15 PREFAB. METAL LOUVERED VENT PAINTED TO MATCH BUILDING SEE MECHANICAL FOR SIZE.

Craig Wickersham Inc
Architects
15821 N. 79th Street
Suite 2
Scottsdale, AZ 85260
480 609-6766

DISCLAIMER:
These drawings are preliminary and are not to be used for construction. They are provided for informational purposes only. The user of these drawings shall be responsible for obtaining all necessary permits and for verifying the accuracy of all information. The user shall indemnify and hold the architect harmless from all claims, damages, and expenses, including reasonable attorneys' fees, arising out of or from the use of these drawings, whether or not such claims, damages, and expenses are caused in whole or in part by the negligence of the architect.

(C) 2007 Craig Wickersham Inc.

REVISIONS:

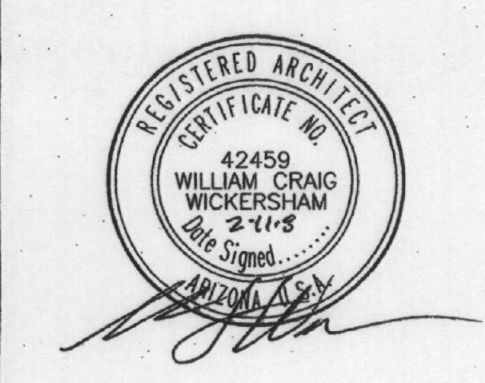
NO.	DATE	DESCRIPTION

NO.	DATE	DESCRIPTION

Sereno Canyon
Crown Community Development
Scottsdale, Arizona

113-DE-2005#2 30-SA-2008
ARCHITECTURAL SEALS
APPROVED
BY THE CITY OF SCOTTSDALE PLANNING DEPARTMENT
CASE NUMBER 1655-07-3 APPROVED BY *[Signature]* DATE 4-16-08

- GENERAL NOTES**
- A) SEE BUILDING SECTIONS FOR PLATE HEIGHTS NOT SHOWN THIS PLAN.
 - B) SEE ROOF PLAN FOR ROOF SLOPES, VENTING INFO AND CALCS.
 - C) SEE DOOR & WINDOW SCHEDULE FOR WINDOW HEADER HEIGHTS NOT SHOWN.



CONSTRUCTION AND INSTALLATION SHALL BE IN ACCORDANCE WITH THIS PLAN AND ANY AND ALL DEVIATIONS WILL REQUIRE REAPPROVAL

GUARD STATION ELEVATIONS
SCALE: 1/4" = 1'-0"

JOB NO. 0702 SHEET NO. A3.1
DATE DEC 18 07
SCALE AS SHOWN
DRAWN S.J.R.
CHECKED WCW
PLAN CHECK NO. 1655-07-02