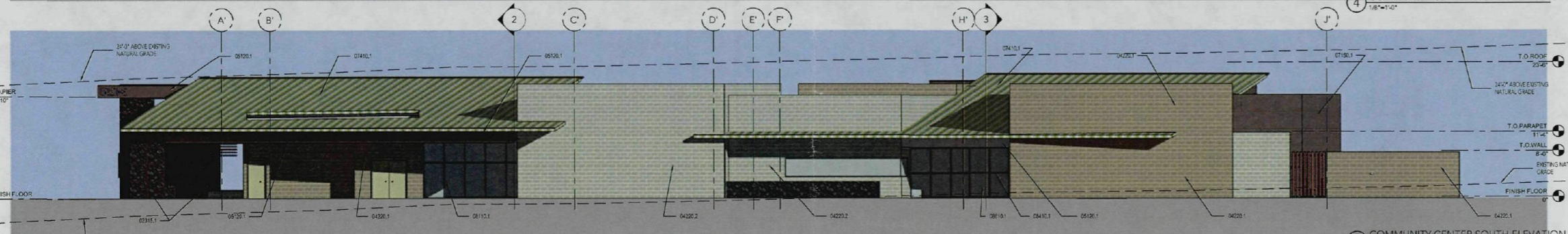
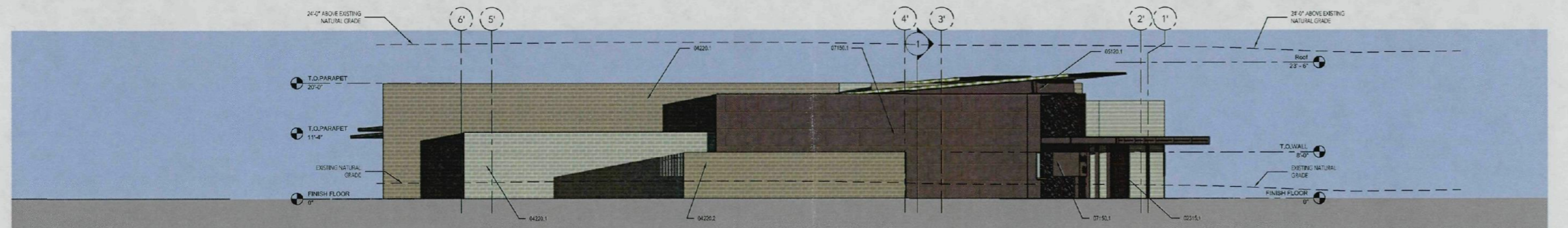


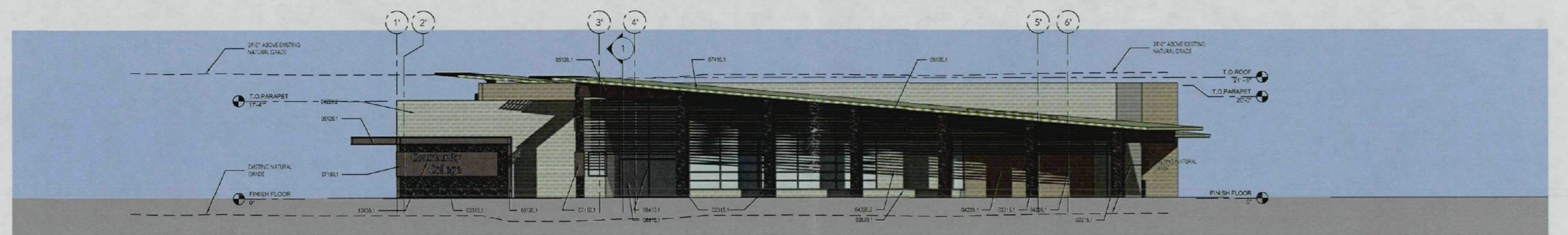
4 COMMUNITY CENTER NORTH ELEVATION  
1/8"=1'-0"



3 COMMUNITY CENTER SOUTH ELEVATION  
1/8"=1'-0"



2 COMMUNITY CENTER EAST ELEVATION  
1/8"=1'-0"

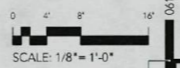


1 COMMUNITY CENTER WEST ELEVATION  
1/8"=1'-0"

95-SA-2009  
**APPROVED**  
*Joseph Bellini* 3-30-2009  
 DATE

\*SEE STAFF APPROVAL LETTER FOR STIPULATIONS.

- 0225.1 BLACK WOOD ROCK GABION
- 0226.1 EUCALIPTUS TREES
- 0227.1 QUINCY EDWARDS TROPICAL WOOD DECK
- 0228.1 STAINLESS STEEL W/ NATURAL OIL FINISH, COLOR 200211
- 0229.1 STEEL WITH NATURAL PATINA
- 0230.1 STEEL FINISH WITH NATURAL PATINA
- 0231.1 METAL ROOF
- 0232.1 HOLLOW METAL DOOR AND FRAME - TO MATCH ADJACENT
- 0233.1 HAZARD DARK BRONZE STONEPOINT
- 0234.1 1/4" CLEAR INSULATED GLASS
- 0235.1 GLAZIERS STEEL BRIDGE



PRE-APPLICATION # 542-PA-2006

DESERT FOOTHILLS YMCA  
 COMMUNITY CENTER & Paradise Valley  
 Community College North at Black Mountain



EE.02  
 COMM. CENTER  
 EXT. ELEVATIONS  
 REVISED

ARCHITECTON

PROJECT TEAM  
 ARCHITECTON  
 100 N. 1st Street, Suite 100, Phoenix, AZ 85004  
 (602) 254-1111  
 www.architecton.com

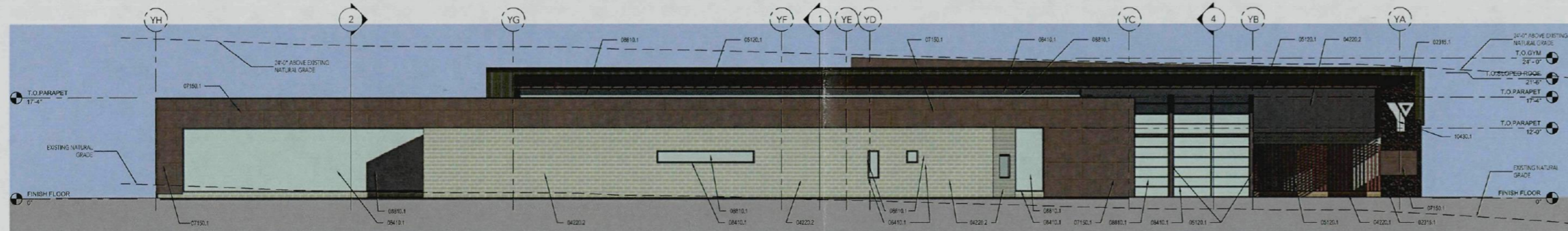
DESIGN PARTNER  
 DESERT FOOTHILLS YMCA  
 100 N. 1st Street, Suite 100, Phoenix, AZ 85004  
 (602) 254-1111

ENGINEER  
 STRUCTURAL ENGINEERING  
 100 N. 1st Street, Suite 100, Phoenix, AZ 85004  
 (602) 254-1111

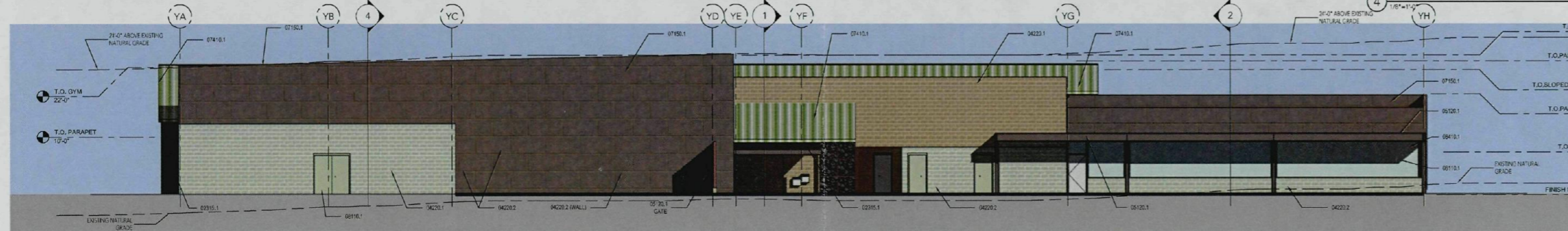
LANDSCAPE ARCHITECT  
 LANDSCAPE ARCHITECTURE  
 100 N. 1st Street, Suite 100, Phoenix, AZ 85004  
 (602) 254-1111

PLANNING  
 PLANNING  
 100 N. 1st Street, Suite 100, Phoenix, AZ 85004  
 (602) 254-1111

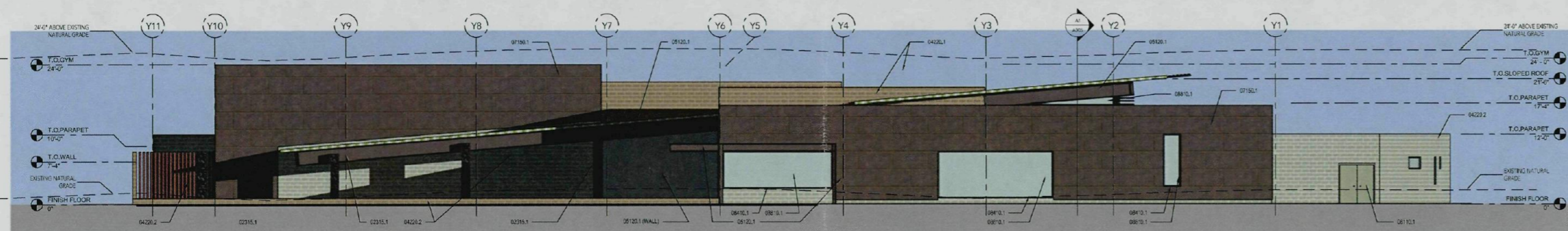
DATE: 03/22/09



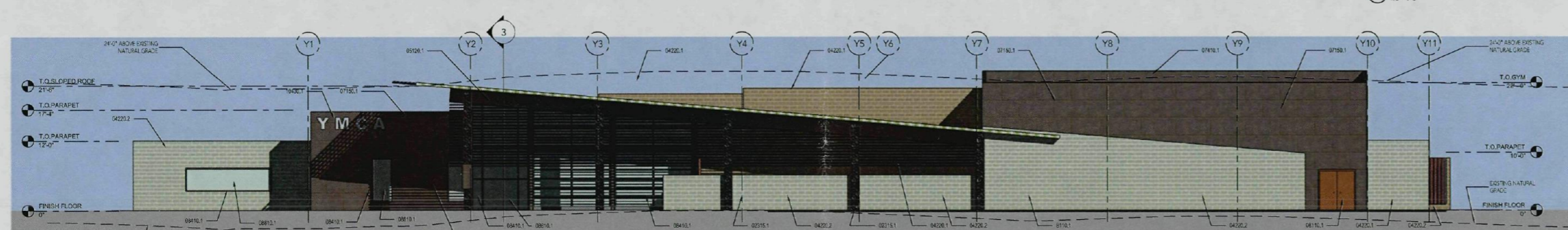
4 YMCA NORTH ELEVATION  
1/8" = 1'-0"



3 YMCA SOUTH ELEVATION  
1/8" = 1'-0"

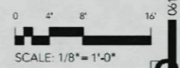


2 YMCA EAST ELEVATION  
1/8" = 1'-0"



1 YMCA WEST ELEVATION  
1/8" = 1'-0"

- 0205.1 BLACK WHEAT ROCK CABERN
- 0206.1 4" CONCRETE TOPPING
- 0402.1 DUNN EDWARDS CAME SEPIA 0817B
- 0402.2 DUNN EDWARDS TILIMBUCA GREY - 05071
- 0503.1 STEEL WITH METAL PATINA
- 0700.1 STEEL FINISH WITH METAL PATINA
- 0701.1 METAL ROOF
- 0801.1 HOLLOW METAL DOOR AND FRAME - TO MATCH ADJACENT
- 0801.2 ALUMINUM "CAIR SPUNES" 2" OVERHUNG
- 0801.3 1/4" CLEAR INSULATED GLASS
- 0801.4 GLAZIERED STEEL SIGNAGE



PRE-APPLICATION # 542-PA-2006

EE.01  
YMCA EXTERIOR  
ELEVATIONS  
ORIGINAL

ARCHITECTON

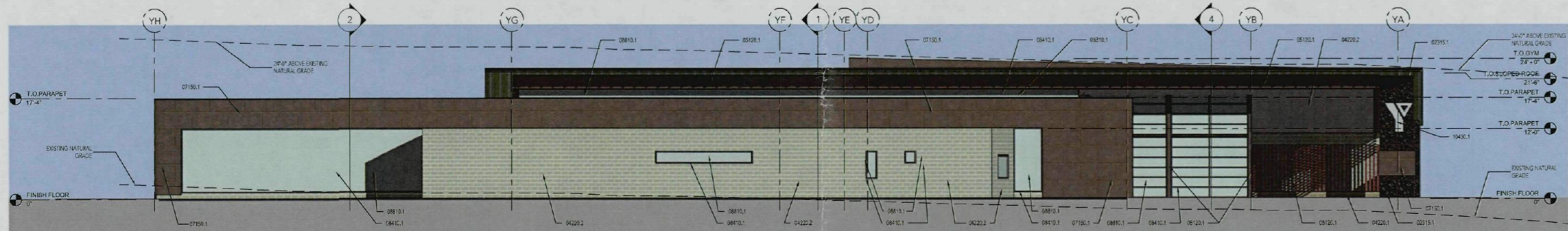
PROJECT TEAM  
ARCHITECTON  
DESIGNER  
ARCHITECTON  
DESIGNER  
ARCHITECTON  
DESIGNER

DESERT FOOTHILLS YMCA  
COMMUNITY CENTER & Paradise Valley  
Community College North at Black Mountain

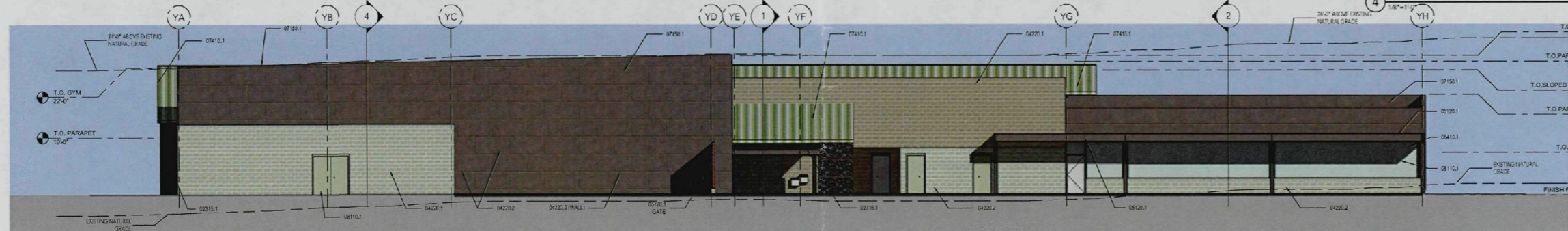


NOT DATE: 29-Mar-09

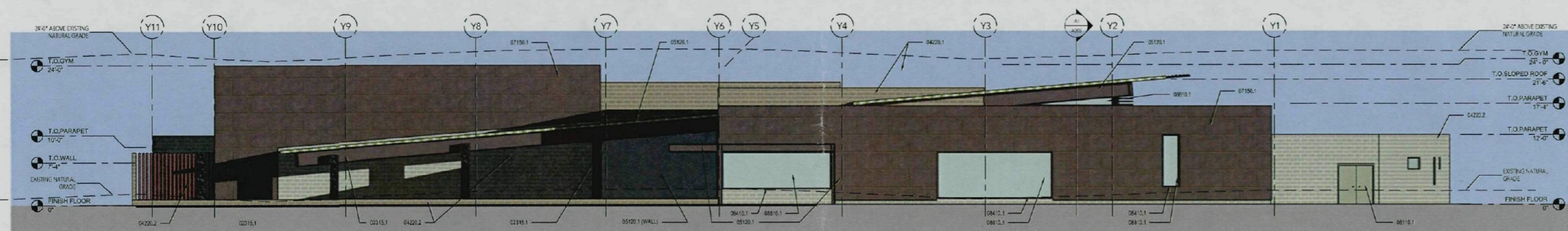




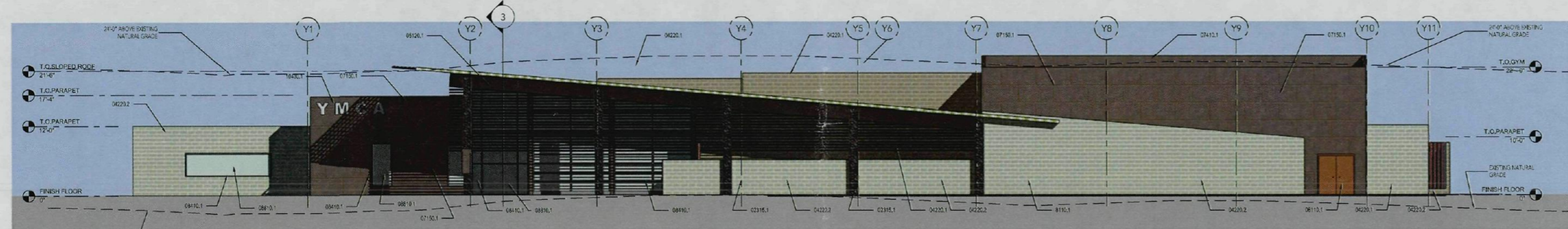
4 YMCA NORTH ELEVATION



3 YMCA SOUTH ELEVATION



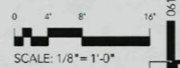
2 YMCA EAST ELEVATION



1 YMCA WEST ELEVATION

95-5A-2009  
**APPROVED**  
*Joseph Collins* 3-30-2009  
 DATE  
 \*SEE STAFF APPROVAL LETTER FOR STIPULATIONS

- 0201.1 BLACK RUBY ROCK GABION
- 0202.1 L. CONCRETE TILING
- 0203.1 DUNE EDWARDS 1" SCAN METAL DECK
- 0204.1 DUNE EDWARDS 1/2" SCAN METAL DECK
- 0205.1 STEEL PANELS WITH NATURAL PATINA
- 0206.1 STEEL PANELS WITH NATURAL PATINA
- 0207.1 METAL ROOF
- 0208.1 HOLLOW METAL ROOF AND FRAME TO MATCH ADJACENT
- 0209.1 ARCADIA "HAPPY BUNCH" STOREFRONT
- 0210.1 1/4" COR. BRASS TO GLASS
- 0211.1 CLAVANCO STEEL SIGNAGE



PRE-APPLICATION # 542-PA-2006

ARCHITECTON

PROJECT TEAM  
 ARCHITECT  
 100 N. GARDEN ST. SUITE 200  
 DENVER, CO 80202  
 (303) 733-1111  
 www.architecton.com

DESERT FOOTHILLS YMCA  
 COMMUNITY CENTER & Paradise Valley  
 Community College North at Black Mountain



EE.01  
 YMCA EXTERIOR  
 ELEVATIONS  
 REVISED