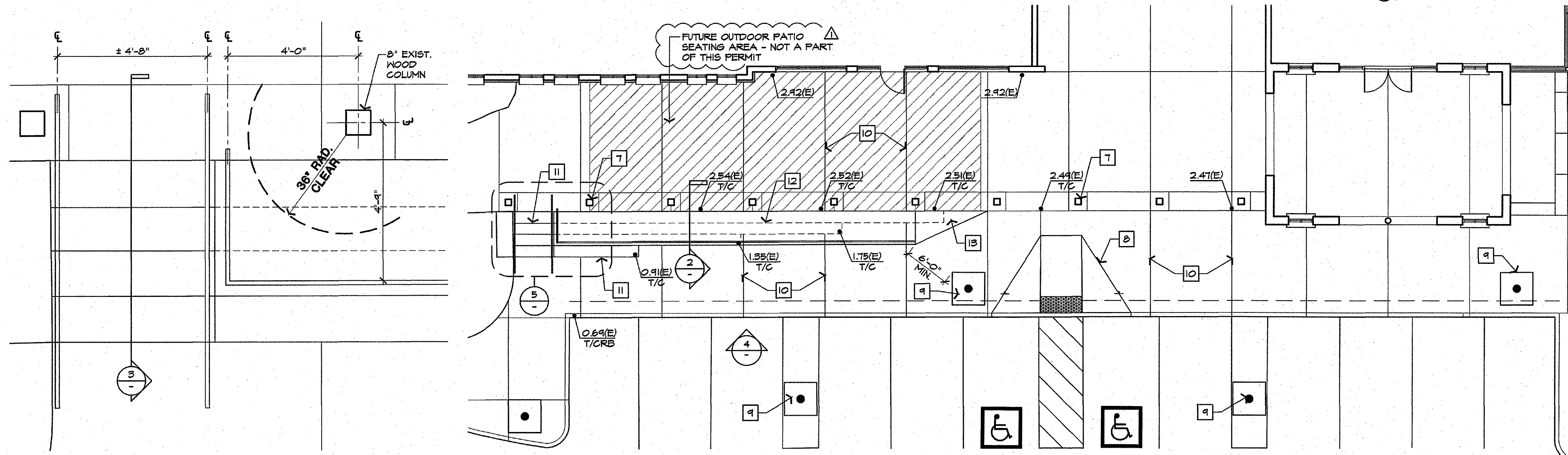


CITY COPY

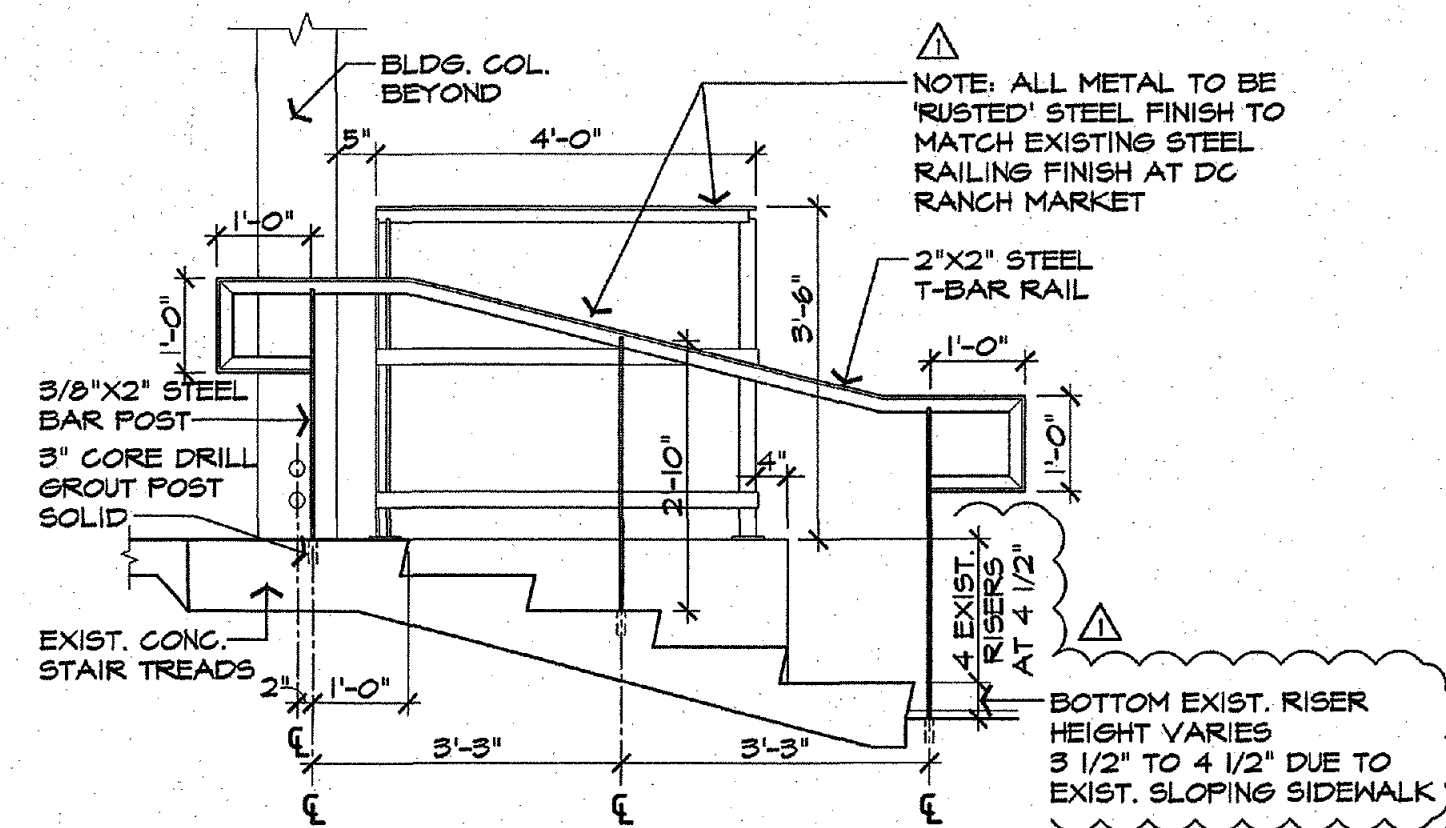
KEYNOTES

- 1 24" DEEP - TACTILE WARNING SURFACE TILE OVER 4" CONC. SUB-BASE
- 2 SAWCUT AND REMOVE EXIST. CONC. PAVING FOR NEW CONC.
- 3 EXIST. TAPERED CURB TO REMAIN
- 4 NEW 4" THK. CONC. RAMP - EXPOSED AGG. FINISH - 8" MAX. SLOPE
- 5 NOT USED
- 6 REMOVE SIGN POST AND RESET IN NEW RAMP CONC.
- 7 EXIST. WOOD CANOPY COLUMN
- 8 EXIST. RAMP
- 9 EXIST. TREE GRATE
- 10 EXIST. CONC. WALKWAY TO REMAIN
- 11 EXIST. STEPS TO REMAIN
- 12 NEW 4" EXP. AGG. CONC. SLAB OVER EXISTING STEPS FINISH TO MATCH EXISTING EXP. AGG.
- 13 REMOVE PORTION OF SLAB AS NECESSARY TO TRANSITION TO EXIST. SLAB EDGES, INFILL W/ NEW EXP. AGG. CONC.

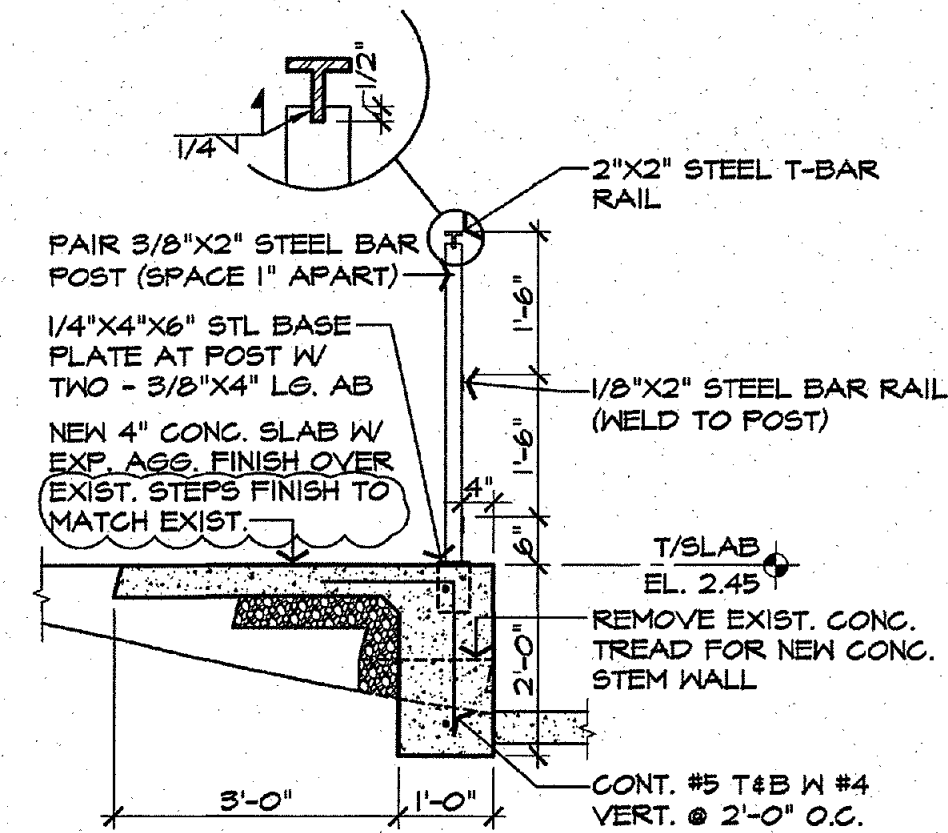


5 PARTIAL PLAN
SCALE: 1/2" = 1'-0"

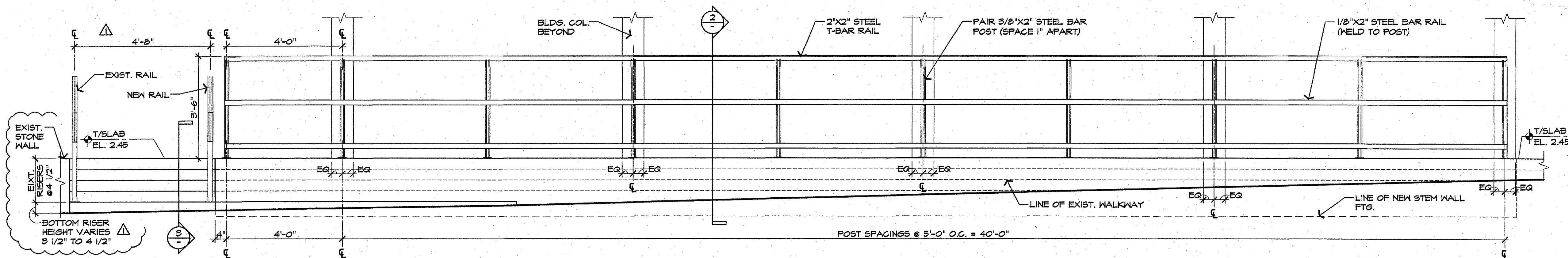
1 PAVING PLAN
SCALE: 1/8" = 1'-0"



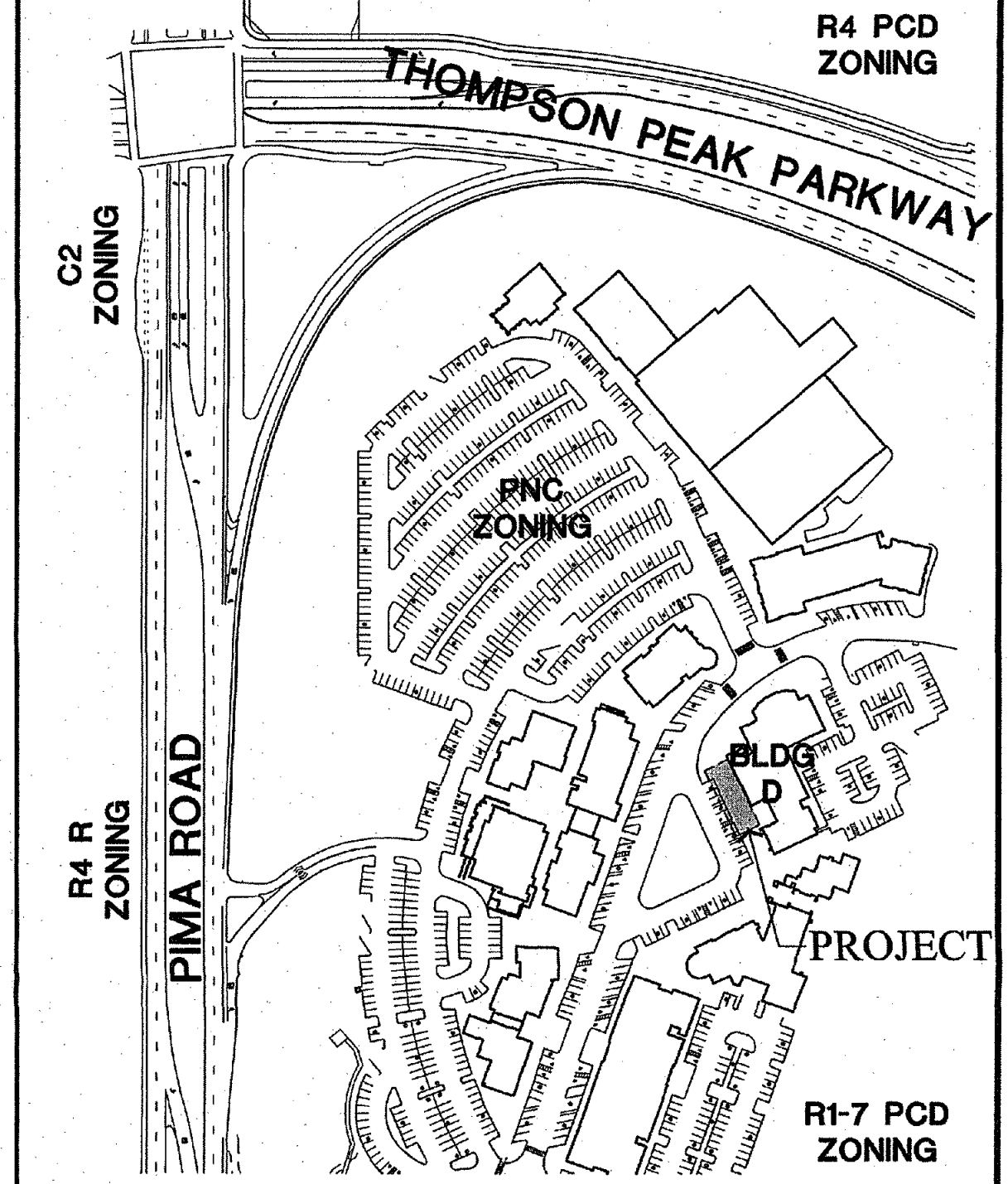
3 STEP RAIL SECTION/ELEVATION
SCALE: 1/2" = 1'-0"



2 GUARD RAIL SECTION
SCALE: 1/2" = 1'-0"



4 GUARD RAIL ELEVATION
SCALE: 1/2" = 1'-0"



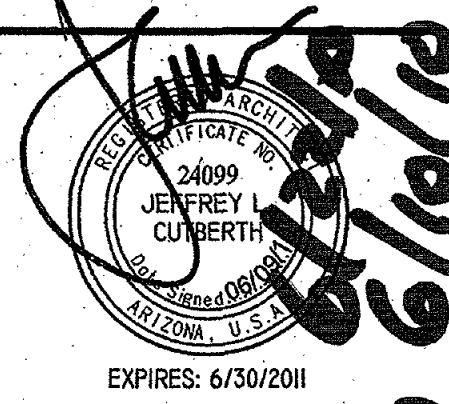
MASTER SITE PLAN
SCALE: N.T.S.

PROJECT SITE DATA

ADDRESS: 20751 N. PIMA RD SCOTTSDALE, AZ 85255
 APN: 217-88-887
 ZONING: PNC PCD
 QS: 41-49
 CASE NO.: 175-SA-2010
 PLAN CHECK NO.: 2434-10



Butler Design Group Inc.
 Architects & Planners
 5555 East Van Buren St.
 Suite 215
 Phoenix, Arizona 85008
 phone 602-957-1800
 fax 602-957-7722



OWNERSHIP OF INSTRUMENTS OF SERVICE
 All reports, plans, specifications, computer files, notes and other documents and instruments prepared by the design professional as instruments of service shall remain the property of the design professional. The professional shall retain all copyright law and reserved rights, including the copyright thereof.

DC RANCH MARKET
 BUILDING 'D'
 BUILDING
 20751 N. PIMA RD
 SCOTTSDALE, AZ 85255

Revisions:
 Permit
 168795
 2434-10

RAMP PLANS	
Date:	04/14/10
Project number:	10029
Drawn by:	AM
Checked by:	TR
CAD file:	A1.0
Sheet Num:	6-2240

CITY OF SCOTTSDALE
 BUILDING PLANS
 THESE PLANS HAVE BEEN REVIEWED
 AND ARE READY FOR A PERMIT.
 THIS DOES NOT AUTHORIZE VIOLATIONS OF ANY
 CODE OR ORDINANCE

A1.0