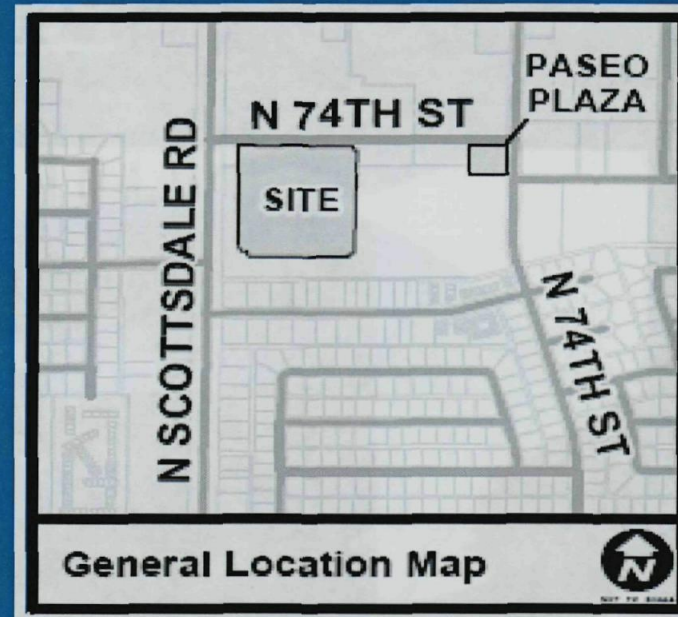


SKYSONG 3



88-DR-2005#6

Development Review Board
Coordinator: Greg Bloemberg
July 9, 2009

Perspective



Perspective



Perspective



Streetscape



1 West Elevation
Scale: 1/16"=1'-0"

2 East Elevation
Scale: 1/16"=1'-0"

ARCHITEKTON



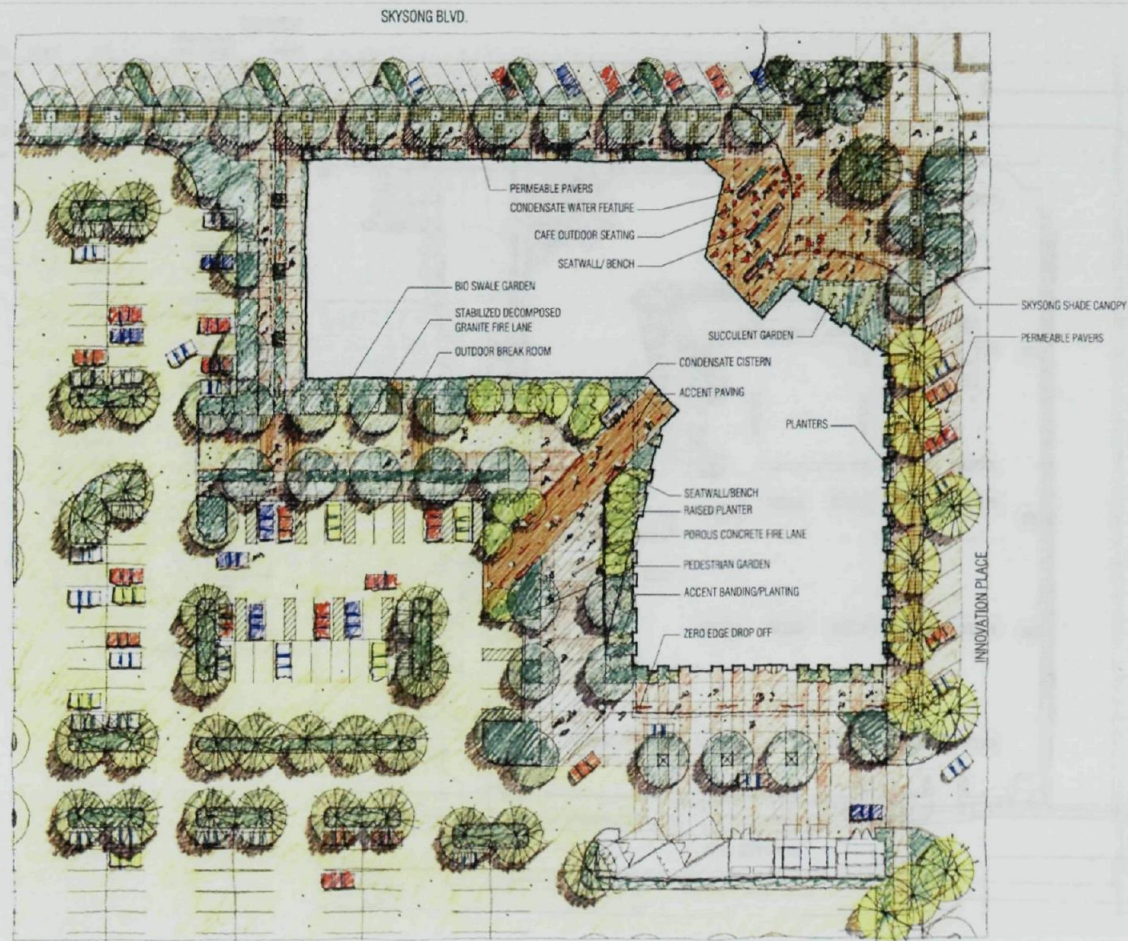
Owners/Developers
USA
 East Estate Company
 3040 Corporate Blvd.
 Suite 500
 San Antonio, TX 78201-0210
ASU Foundation
 Public Offices
 1010 E. University Ave.
 P.O. Box 2042
 Phoenix, AZ 85024-0201
HIGGINS
 Development Partners
 211 E. Oak Street
 Suite 201
 Chicago, IL 60611
The Plaza Companies
 401 N. Henderson Street
 Suite 201
 Phoenix, AZ 85001

SkySong 3
 North Scottsdale Road
 Scottsdale, Arizona 85257

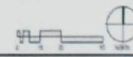
460-PA-2004

Development Review
 Board Submittal
 Date: 02/05/09
 Streetscape
 Elevations
A213

Landscape (color)



1 ILLUSTRATIVE PLAN ENLARGEMENT
SCALE 1" = 30'-0"



NOT FOR
CONSTRUCTION

460-PA-2004

ARCHITEKTON

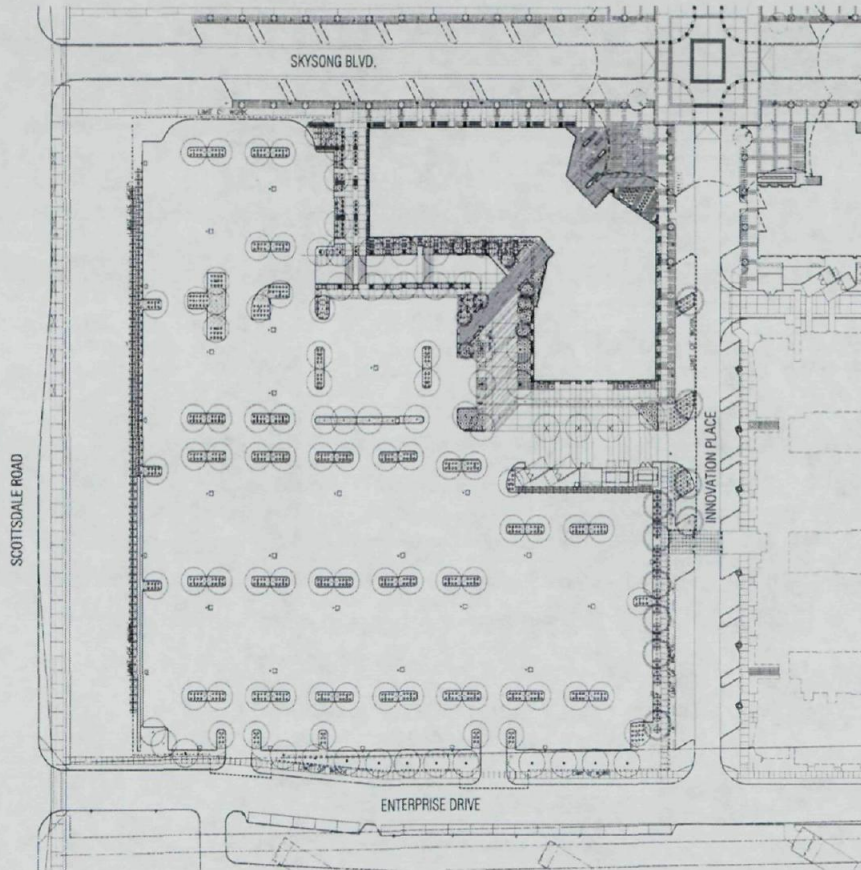


Owners/Developers
USAA
Real Estate Company
2000 Lakeside Blvd.
Suite 400
Fort Worth, TX 76102-0208
ASU Foundation
P.O. Box 21000
Phoenix, AZ 85068-0200
HIGGINS
Development Partners
101 East Olive Street
Suite 100
Phoenix, AZ 85001
The Plaza Companies
3401 W. Thunderbolt Road
Suite 200
Phoenix, AZ 85018

SkySong 3
North: East/Westside Road
Southside: Phoenix 85027

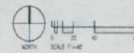
Development Review
Revised Submittal
Date: 06/18/08
ILLUSTRATIVE
ENLARGEMENT
L1.4

Landscape



PLANT LEGEND

Symbol	Botanical Name Common Name	Size	Quantity	Remarks
(A)	Botrychium sp. / Spore	30" Box	26	MM Standard - Height 15 Width 10" - Caliper 2"
(B)	Phlox paniculata / Phlox	30" Box	90	MM Standard - Height 12 Width 8" - Caliper 2.5"
(C)	Phlox paniculata / Phlox	30" Box	12	MM Standard - Height 12 Width 8" - Caliper 2.5"
(D)	Phlox paniculata / Phlox	30" Box	13	MM Standard - N/A
(E)	Euonymus alatus / Spindle Tree	5 Gallon	23	
(F)	Euonymus alatus / Spindle Tree	5 Gallon	1726	
(G)	Amelanchier canadensis / Wax Star	5 Gallon	34	
(H)	Juniperus horizontalis / Creeping Juniper	5 Gallon	128	
(I)	Juniperus horizontalis / Creeping Juniper	5 Gallon	79	
(J)	Quercus macrocarpa / Chestnut Oak	5 Gallon	163	
(K)	Prunella americana / Common Plum	5 Gallon	72	
(L)	Artemisia biennis / Common Wormwood	5 Gallon	140	
(M)	Artemisia biennis / Common Wormwood	5 Gallon	15	
(N)	Quercus macrocarpa / Chestnut Oak	5 Gallon	177	
(O)	Quercus macrocarpa / Chestnut Oak	5 Gallon	7	
(P)	Quercus macrocarpa / Chestnut Oak	5 Gallon	16	
(Q)	Quercus macrocarpa / Chestnut Oak	5 Gallon	38	
(R)	Quercus macrocarpa / Chestnut Oak	5 Gallon	140	
(S)	Quercus macrocarpa / Chestnut Oak	5 Gallon	58	
(T)	Quercus macrocarpa / Chestnut Oak	5 Gallon	120	
(U)	Lonicera japonica / Japanese Honeysuckle	1 Gallon	600	
(V)	Lonicera japonica / Japanese Honeysuckle	1 Gallon	135	
(W)	None			
(X)	None			
(Y)	None			
(Z)	None			



NOT FOR
CONSTRUCTION

460-PA-2004

ARCHITEKTON



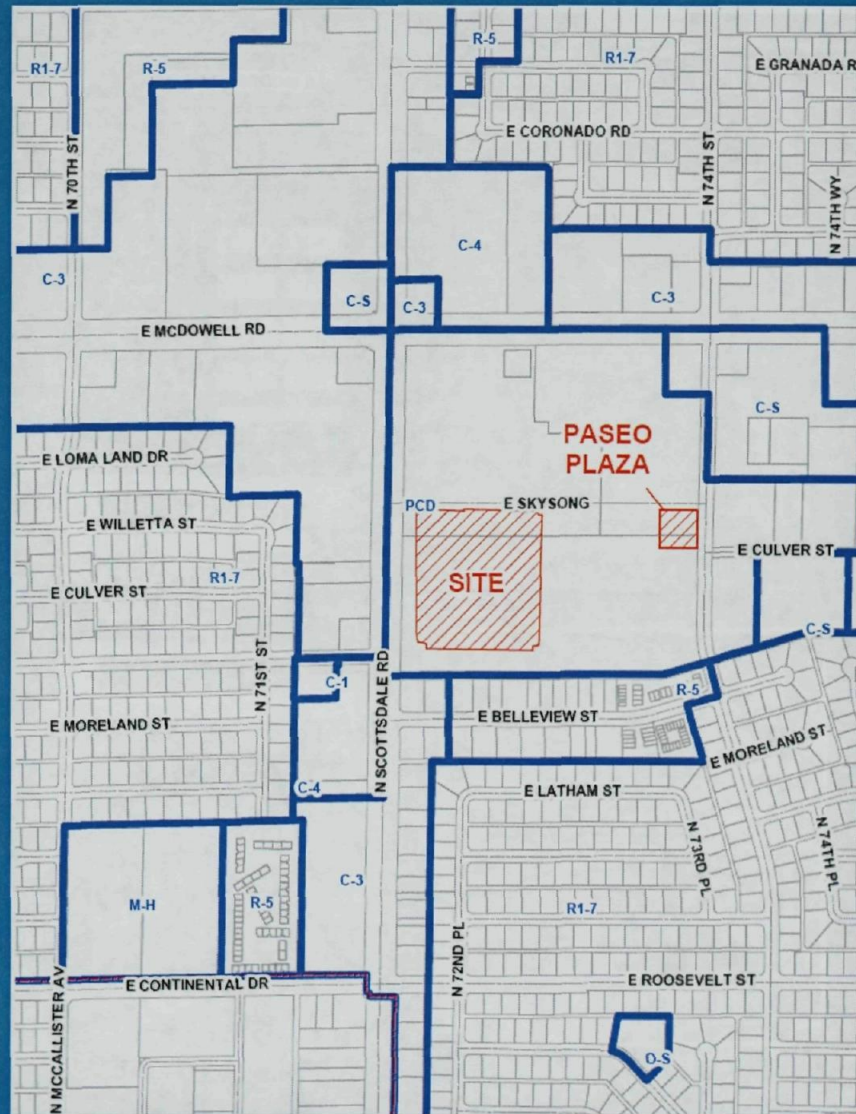
Owners/Developers
URAA
 Real Estate Company
 950 Commerce Blvd
 Suite 600
 San Antonio, TX 78210-2228
ABJ Foundation
 Feltner Center
 201 E. University, Suite
 P.O. Box 120
 Tempe, AZ 85281-2201
HODGINS
 Development Partners
 104 East First Street
 Suite 600
 Chicago, IL 60611

The Plaza Companies
 100 W. Henderson Road
 Suite 200
 Peoria, AZ 85601

SkySong 3
 Planting Plan
 Scottsdale, Arizona 85257

Development Division
 Board Submitted
 Date 05/8/09
PLANTING PLAN
L1.3

Zoning



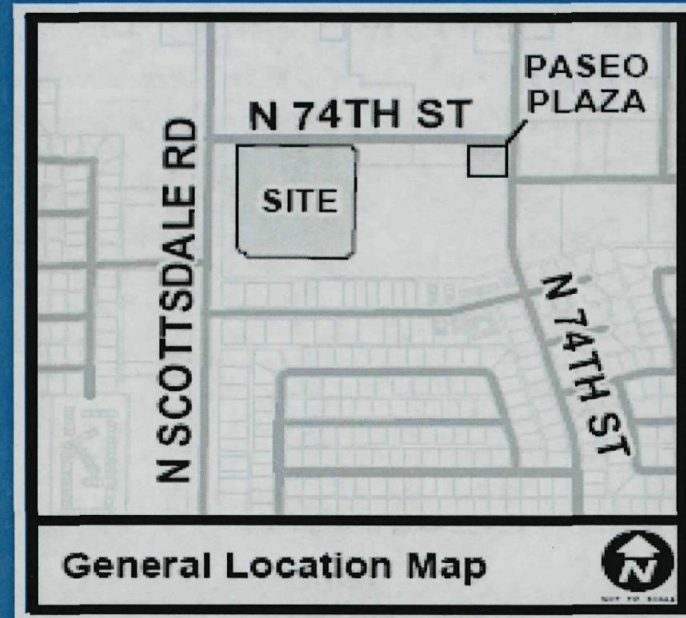
Site Aerial Photo



Contextual Aerial Photo



SKYSONG 3



88-DR-2005#6

Development Review Board
Coordinator: Greg Bloemberg
July 9, 2009