



1 ILLUSTRATIVE PLAN  
SCALE: 1" = 40'-0"

NOT FOR  
CONSTRUCTION

ARCHITEKTON

466 S Farmer Ave., Suite 101  
Tempe AZ, 85281  
T 480 894 4637  
F 480 894 4638  
www.architekton.com

Ten Eyck  
ARCHITECTS P.C.  
208 West McDowell Road, Suite 100  
Phoenix, Arizona 85014  
Tel: 480-248-0200  
Fax: 480-248-3715



Owners/Developers

USAA  
Real Estate Company  
8830 Colonnade Blvd.  
Suite 600  
San Antonio, TX 78230-2239

ASU Foundation  
Fulton Center  
300 E. University Drive  
P.O. Box 2280  
Tempe, AZ 85280-2280

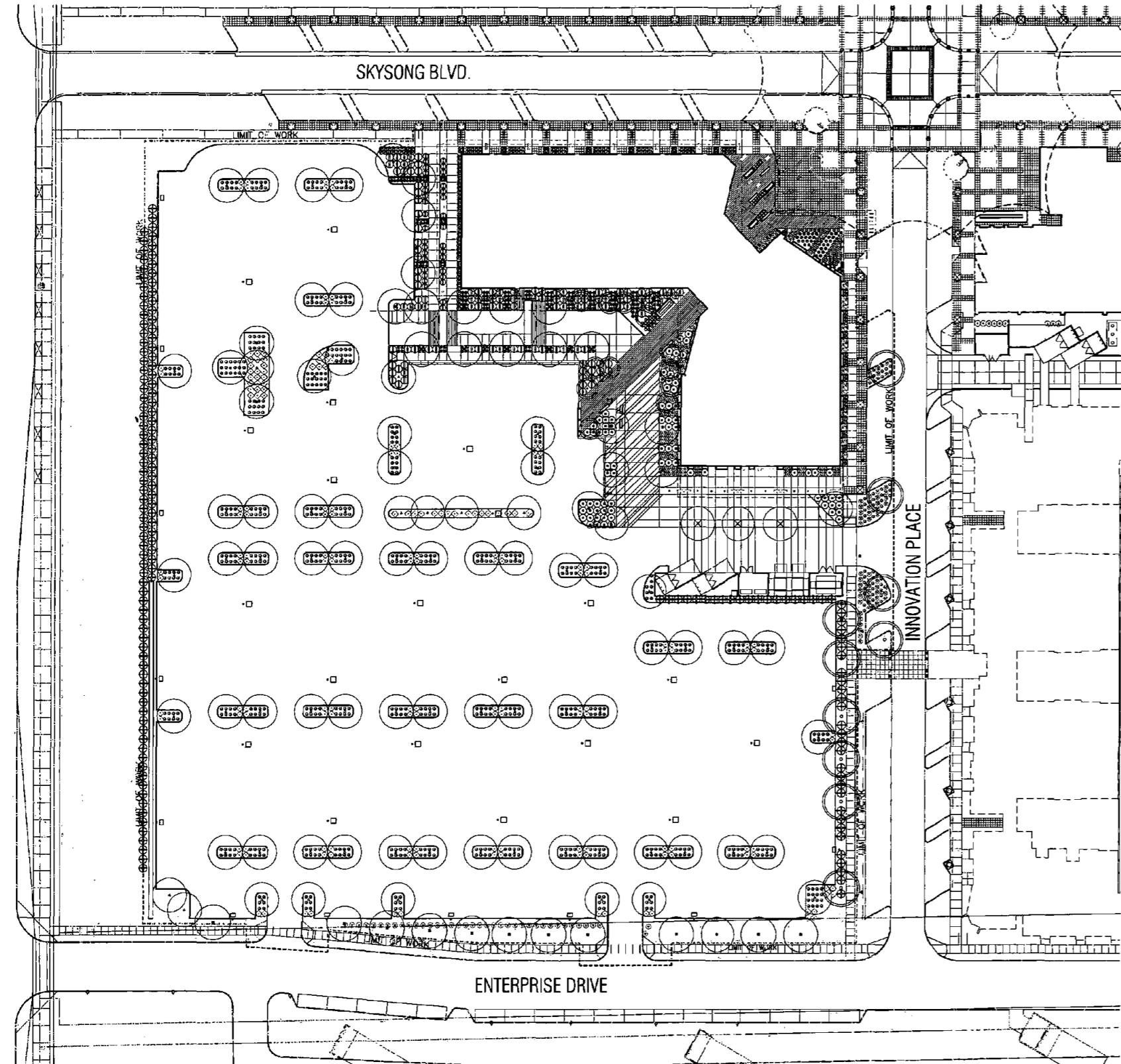
HIGGINS  
Development Partners  
101 East Erie Street  
Suite 850  
Chicago, IL 60611

The Plaza Companies  
8401 W Thunderbird Road  
Suite 200  
Peoria, AZ 85381

SkySong 3  
North Scottsdale Road  
Scottsdale, Arizona 85257

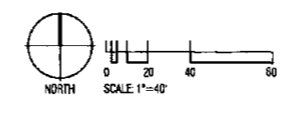
460-PA-2004

Development Review  
Board Submittal  
Date: 05/8/09  
ILLUSTRATIVE  
PLAN  
L1.1



**PLANT LEGEND**

Symbol	Botanical Name Common Name	Size	Quantity	Remarks
<b>Trees:</b>				
●	<i>Dalbergia sissoo</i> Sissoo	36" Box	26	ANA Standard - Height 15' Width 10' - Caliper 3"
△	<i>Prosopis thornless hybrid 'Phoenix'</i> Native Mesquite	36" Box	30	ANA Standard - Height 10' Width 8' - Caliper 2.5"
○	<i>Parkinsonia praecox</i> Palo Brea	36" Box	10	ANA Standard - Height 10' Width 8' - Caliper 2.5"
○	<i>Acacia willardiana</i> Palo Blanco	36" Box	13	ANA Standard - N/A
<b>Shrubs:</b>				
△	<i>Euphorbia rigida</i> Goiter Plant	5 Gallon	23	
△	<i>Ericameria bicolorifolia</i> Turpentine Bush	1 Gallon	1736	
○	<i>Jasminum sambac</i> Arabian Jasmine	5 Gallon	34	
○	<i>Justicia californica</i> Chuparosa	5 Gallon	126	
○	<i>Justicia spigularia</i> Mexican Honeybush	5 Gallon	79	
○	<i>Tecoma stans v. stans</i> 'Gold Star' Gold Star	5 Gallon	163	
○	<i>Portulacaria alata</i> Elephants Food	5 Gallon	72	
<b>Accents:</b>				
○	<i>Aloe barbadensis</i> Yellow blooming aloe	5 Gallon	140	
○	<i>Asclepias tuberosa</i> Desert Milkweed	1 Gallon	55	
◇	<i>Dasyliion acrothiche</i> Green Desert Spoon	5 Gallon	177	
○	<i>Dasyliion longissimum</i> Mexican Grass Tree	5 Gallon	7	
○	<i>Equisetum hyemale</i> Horse Tail Reed	5 Gallon	50	
○	<i>Hesperaloe parviflora</i> Red Yucca	5 Gallon	39	
○	<i>Hesperaloe funifera</i> Giant Hesperaloe	5 Gallon	140	
○	<i>Plectranthus macrocarpus</i> Slipper Plant	5 Gallon	58	
○	<i>Sansevieria cylindrica</i> Spear Sansevieria	5 Gallon	105	
<b>Vines / Groundcovers:</b>				
○	<i>Lantana species</i> Lantana 'New Gold'	1 Gallon	530	
○	<i>Setcreasea pallida</i> Purple Heart Plant	1 Gallon	135	
<b>Inerts:</b>				
No Symbol	3/4" minus decomposed granite - 'Apache Brown' (typical in all planting areas)			



NOT FOR  
CONSTRUCTION

ARCHITEKTON

464 S Farmer Ave., Suite 101  
Tempe, AZ 85281  
T 480.894.4637  
F 480.894.4638  
www.architekton.com

**Ten Eyck**  
Professional Engineer  
No. 100  
Phoenix, Arizona 85014  
Exp. 02-28-2009  
Exp. 02-28-2010

CHRISTOPHER E. TEN EYCK  
Professional Engineer  
No. 100  
Phoenix, Arizona 85014  
Exp. 02-28-2009  
Exp. 02-28-2010

Expiration Date:  
September 30, 2010

**Owners/Developers**

**USA**  
Real Estate Company  
8830 Colonnade Blvd.  
Suite 800  
San Antonio, TX 78230-2238

**ASU Foundation**  
Fulton Center  
300 E. University Drive  
P.O. Box 2260  
Tempe, AZ 85280-2260

**HIGGINS**  
Development Partners  
101 East Erie Street  
Suite 800  
Chicago, IL 60611

**The Plaza Companies**  
9401 W. Thunderbird Road  
Suite 200  
Peoria, AZ 85381

**SkySong 3**  
North Scottsdale Road  
Scottsdale, Arizona 85257

460-PA-2004

Development Review  
Board Submittal  
Date: 05/19/09

**PLANTING PLAN**  
**L1.3**