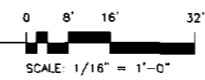


1 North Elevation
Scale: 1/16" = 1'-0"



MATERIAL / COLOR

GLASS SPANDREL PANELS (OPAQUE)
(INTERIOR) BACKPAINTED, (EXTERIOR) NO ADDITIONAL FINISH (METAL STUD FRAMING W/ BATT INSULATION BEHIND GLASS)
SG1 - SPANDREL GLASS COLOR-LIGHT BLUE
SG2 - SPANDREL GLASS COLOR-MEDIUM BLUE
SG3 - SPANDREL GLASS COLOR-DARK BLUE

SPANDREL PANELS, MATTE FINISH (OPAQUE)
(INTERIOR) BACKPAINTED, (EXTERIOR) MATTE FINISH PANEL (METAL STUD FRAMING W/ BATT INSULATION BEHIND GLASS)
ES1 - SPANDREL PANEL COLOR-LIGHT BLUE
ES2 - SPANDREL PANEL COLOR-MEDIUM BLUE
ES3 - SPANDREL PANEL COLOR-DARK BLUE

VISION GLASS
VG1 - VISION GLASS COLOR-VALUE TINT
VG2 - VISION GLASS CLEAR

METAL PANEL SYSTEMS
MP1 - RIBBED METAL PANEL SYSTEM COLOR-"METALLIC COPPER"
MP2 - FLUSH METAL PANEL SYSTEM COLOR-"METALLIC COPPER"

EXTERIOR SOFFITS
BS1 - METAL PANEL SOFFIT COLOR-"METALLIC COPPER"
BS2 - SOFFIT PANEL COLOR-DARK BLUE

STOREFRONT CURTAIN WALL SYSTEM
CW1 - ALUMINUM CURTAIN WALL BUTT GLAZE SYSTEM
CW2 - ALUMINUM STOREFRONT BUTT GLAZE AND CAPTURED SYSTEM

CWS - CURTAIN WALL SYSTEM COLOR-"METALLIC COPPER"

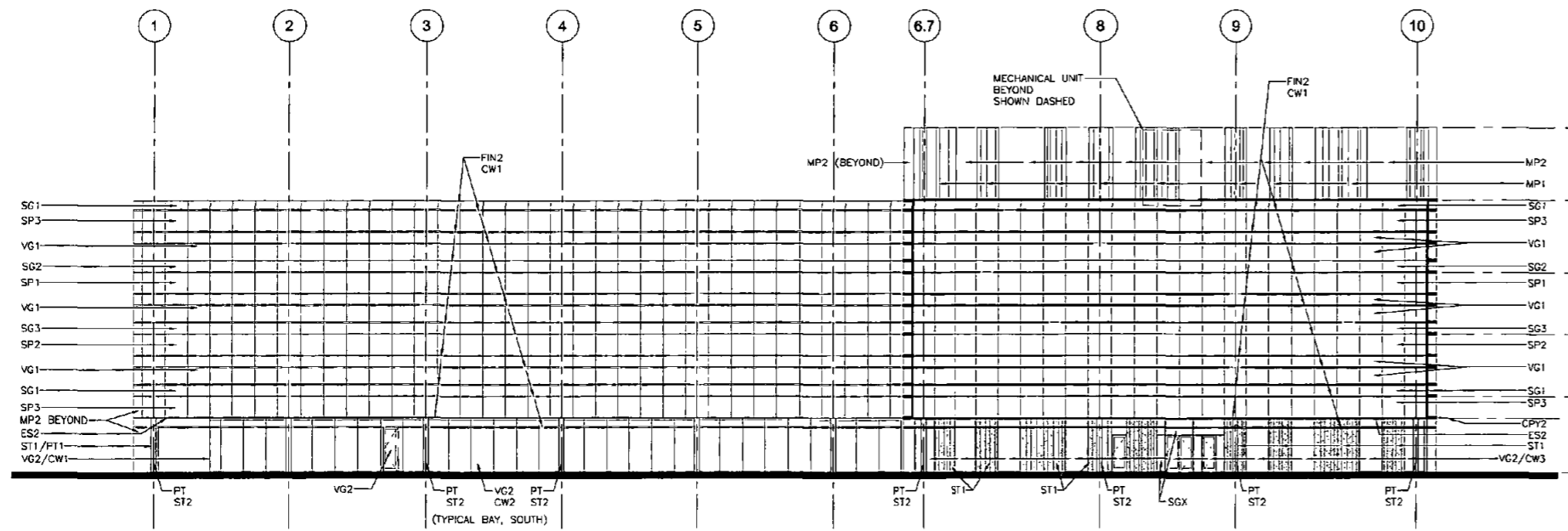
SHADE FINS AND CANOPIES
FIN1 - HORIZONTAL ALUMINUM FIN COLOR-"METALLIC COPPER"
DEPTH 1'-4" (8" GAP + 12" FIN)
FIN2 - HORIZONTAL ALUMINUM FIN COLOR-"METALLIC COPPER"
DEPTH 2'-0" (8" GAP + 18" FIN)
FIN3 - HORIZONTAL ALUMINUM FIN COLOR-"METALLIC COPPER"
DEPTH 1'-4" (8" GAP + 12" FIN) WITH INTEGRAL LIGHT FIXTURE

CPY1 - ALUMINUM CANOPY 4'-8" BEYOND CURTAIN WALL COLOR-"METALLIC COPPER"
CPY2 - ALUMINUM CANOPY 2'-8" BEYOND METAL PANEL WALL (4'-8" OVERALL DEPTH) COLOR-"METALLIC COPPER"

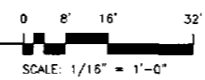
STONE INLAY
ST1 - STONE VENEER WITH VERTICAL METAL RIBS MATCHING THE METAL PANEL SYSTEM COLOR
ST2 - STONE INLAY IN STRUCTURAL STEEL WIDE LARGE COLUMN OUTSIDE OF COLUMN WEB ONLY

PAINT
PT - PAINTED STEEL COLUMNS COLOR-"METALLIC COPPER"

PLANTERS
PL - METAL PLANTER BOX COLOR-"METALLIC COPPER"



2 South Elevation
Scale: 1/16" = 1'-0"



ARCHITEKTON

454 S Farmer Ave., Suite 101
Tempe AZ, 85281
T: 480.994.4837
F: 480.994.4838
www.architekton.com



Owners/Developers

USAA Real Estate Company
9830 Colonnade Blvd.
Suite 600
San Antonio, TX 78230-2229

ASU Foundation
Fisher Center
300 E. University Drive
P.O. Box 2200
Tempe, AZ 85280-2200

HIGGINS Development Partners
101 East Erie Street
Suite 800
Chicago, IL 60611

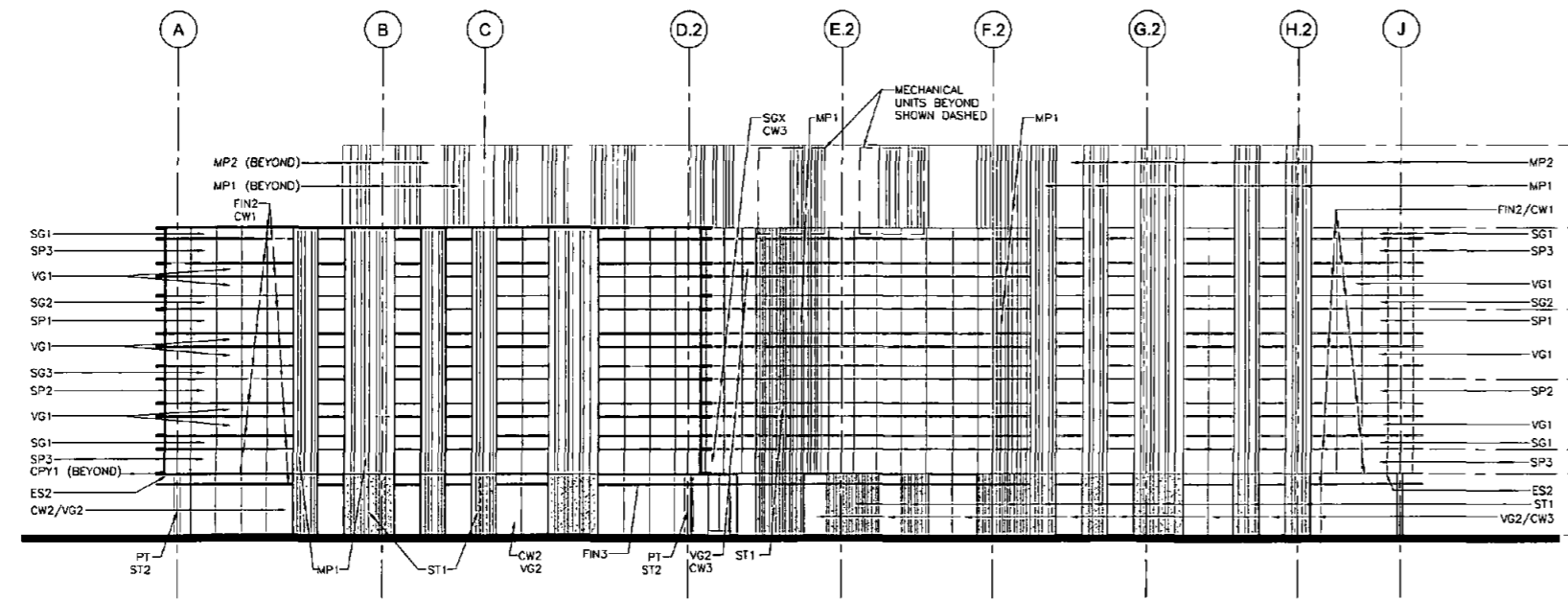
The Plaza Companies
8431 W Thunderbird Road
Suite 200
Peoria, AZ 85381

460-PA-2004

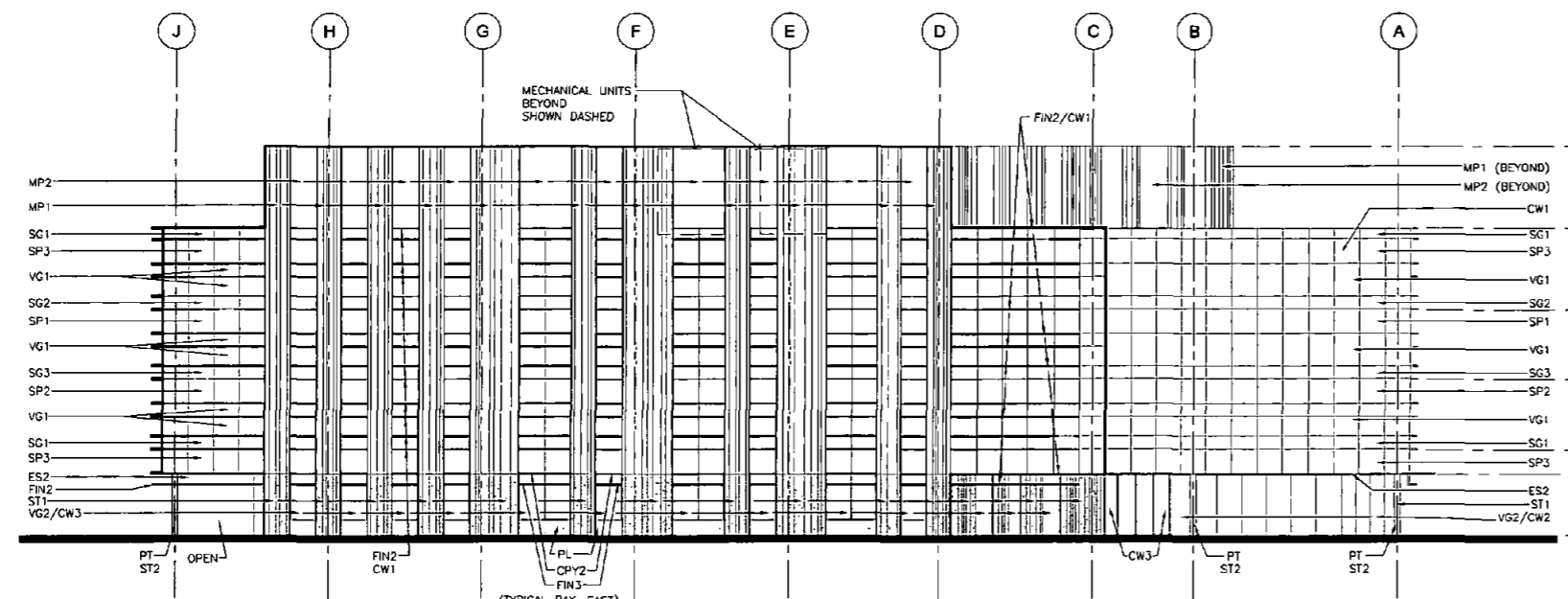
SkySong 3
North Scottsdale Road
Scottsdale, Arizona 85257

Development Review
Board Submittal
Date: 06/18/09

Exterior Elevations
A200



1 West Elevation
Scale: 1/16" = 1'-0"



2 East Elevation
Scale: 1/16" = 1'-0"

MATERIAL / COLOR

- GLASS SPANDREL PANELS (OPACQUE)
INTERIOR UNPAINTED (EXTERIOR) NO ADDITIONAL FINISH (METAL STUD FRAMING W/ BATT INSULATION BEHIND GLASS)
- SG1 - SPANDREL GLASS COLOR-LIGHT BLUE
- SG2 - SPANDREL GLASS COLOR-MEDIUM BLUE
- SG3 - SPANDREL GLASS COLOR-DARK BLUE
- SG4 - SPANDREL GLASS COLOR-GRAY/BLUE
- SPANDREL PANELS, MATTE FINISH (OPACQUE)
INTERIOR UNPAINTED (EXTERIOR) MATTE FINISH PANEL (METAL STUD FRAMING W/ BATT INSULATION BEHIND GLASS)
- SP1 - SPANDREL PANEL COLOR-LIGHT BLUE
- SP2 - SPANDREL PANEL COLOR-MEDIUM BLUE
- SP3 - SPANDREL PANEL COLOR-DARK BLUE
- VISION GLASS
VG1 - VISION GLASS COLOR-BLUE TINT
- VG2 - VISION GLASS CLEAR
- METAL PANEL SYSTEMS
MP1 - RIBBED METAL PANEL SYSTEM COLOR-"METALLIC COPPER"
- MP2 - FLUSH METAL PANEL SYSTEM COLOR-"METALLIC COPPER"
- EXTERIOR SOFFITS
ES1 - METAL PANEL SOFFIT COLOR-"METALLIC COPPER"
- ES2 - SOFFIT PANEL COLOR-DARK BLUE
- STOREFRONT CURTAIN WALL SYSTEM
CW1 - ALUMINUM CURTAIN WALL BUTT GLAZE SYSTEM
- CW2 - ALUMINUM STOREFRONT BUTT GLAZE AND CAPTURED SYSTEM
- CW3 - CURTAIN WALL SYSTEM COLOR-"METALLIC COPPER"
- SHADE FINS AND CANOPIES
FIN1 - HORIZONTAL ALUMINUM FIN COLOR-"METALLIC COPPER"
DEPTH 1-1/2" (8" GAP + 12" FIN)
- FIN2 - HORIZONTAL ALUMINUM FIN COLOR-"METALLIC COPPER"
DEPTH 2-0" (8" GAP + 18" FIN)
- FIN3 - HORIZONTAL ALUMINUM FIN COLOR-"METALLIC COPPER"
DEPTH 1-1/2" (8" GAP + 12" FIN) WITH INTEGRAL LK-IT FUTURE
- CPY1 - ALUMINUM CANOPY 4'-0" BEYOND CURTAIN WALL COLOR-"METALLIC COPPER"
- CPY2 - ALUMINUM CANOPY 2'-0" BEYOND METAL PANEL WALL (4' OVERALL DEPTH) COLOR-"METALLIC COPPER"
- STONE BLVD
ST1 - STONE VENEER WITH VERTICAL METAL RIBS MATCHING THE METAL PANEL SYSTEM COLOR
- ST2 - STONE INLAY IN STRUCTURAL STEEL WIDE LANGE COLUMN OUTSIDE OF COLUMN WEB ONLY
- PAINT
PT1 - PAINTED STEEL COLUMNS COLOR-"METALLIC COPPER"
- PLANTERS
PL - METAL PLANTER BOX COLOR-"METALLIC COPPER"

ARCHITTEKTON

454 S Farmer Ave., Suite 101
Tempe, AZ 85281
T 480.894.4837
F 480.894.4838
www.architekton.com



Owners/Developers

- USAA Real Estate Company**
9830 Colonnade Blvd.
Suite 600
San Antonio, TX 78230-2229
- ASU Foundation**
Fulton Center
300 E. University Drive
P.O. Box 2260
Tempe, AZ 85280-2260
- HIGGINS Development Partners**
101 East Erie Street
Suite 800
Chicago, IL 60611
- The Plaza Companies**
8401 W Thunderbird Road
Suite 200
Peoria, AZ 85611

460-PA-2004

SkySong 3
North Scottsdale Road
Scottsdale, Arizona 85257

Development Review Board Submittal
Date: 05/18/09

Exterior Elevations
A201