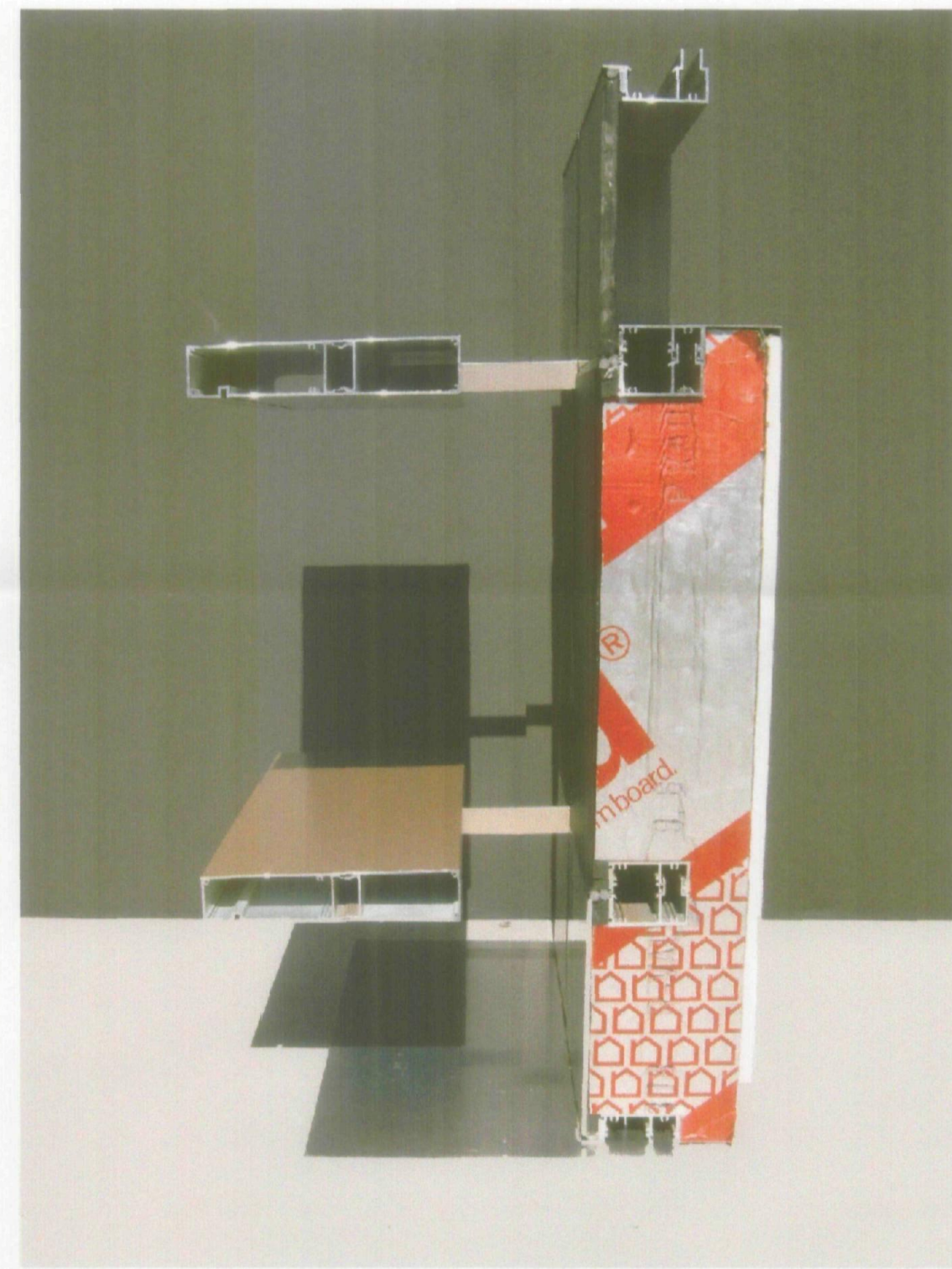


Mock-up: Vision Glass Looking Out

Scale: Actual

**INSULATED VISION GLASS:**  
Visible Light Transmittance = 36%  
Reduces direct sun glare and indirect glare from the fin system into the Tenant space.

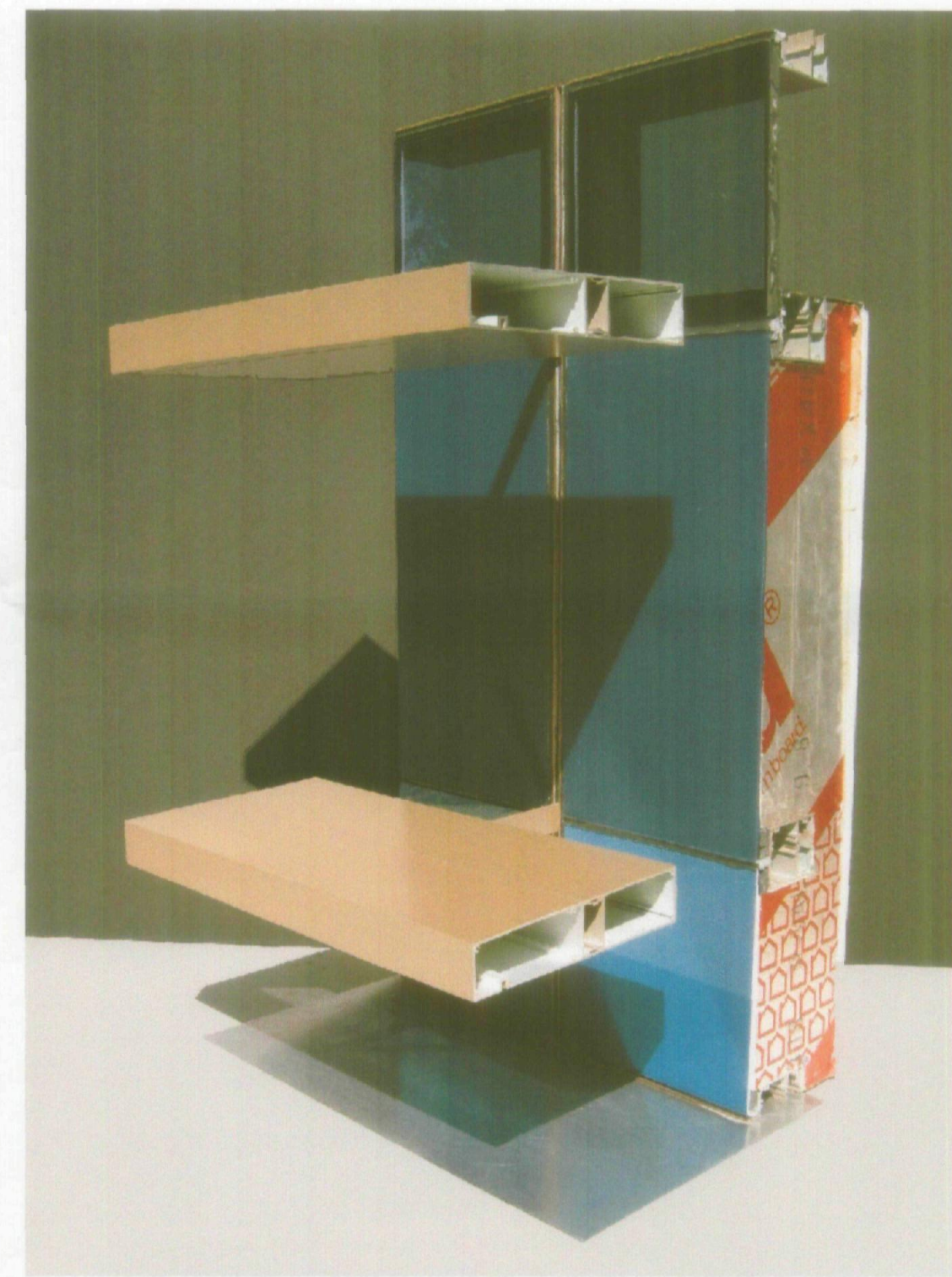
**METAL FIN SYSTEM:**  
Paint Color: Copper Metallic  
The Metallic Finish diffuses sun reflection. By diffusing the sunlight, the point source is obscured reducing glare to the occupants.



Mock-up: Window wall / Fins

Scale: Actual

**PIGEON ROOSTING PREVENTION**  
The 6" gap between the back of the fin system and the window wall is intended to discourage roosting opportunities.



Mock-up: Window wall / Fins

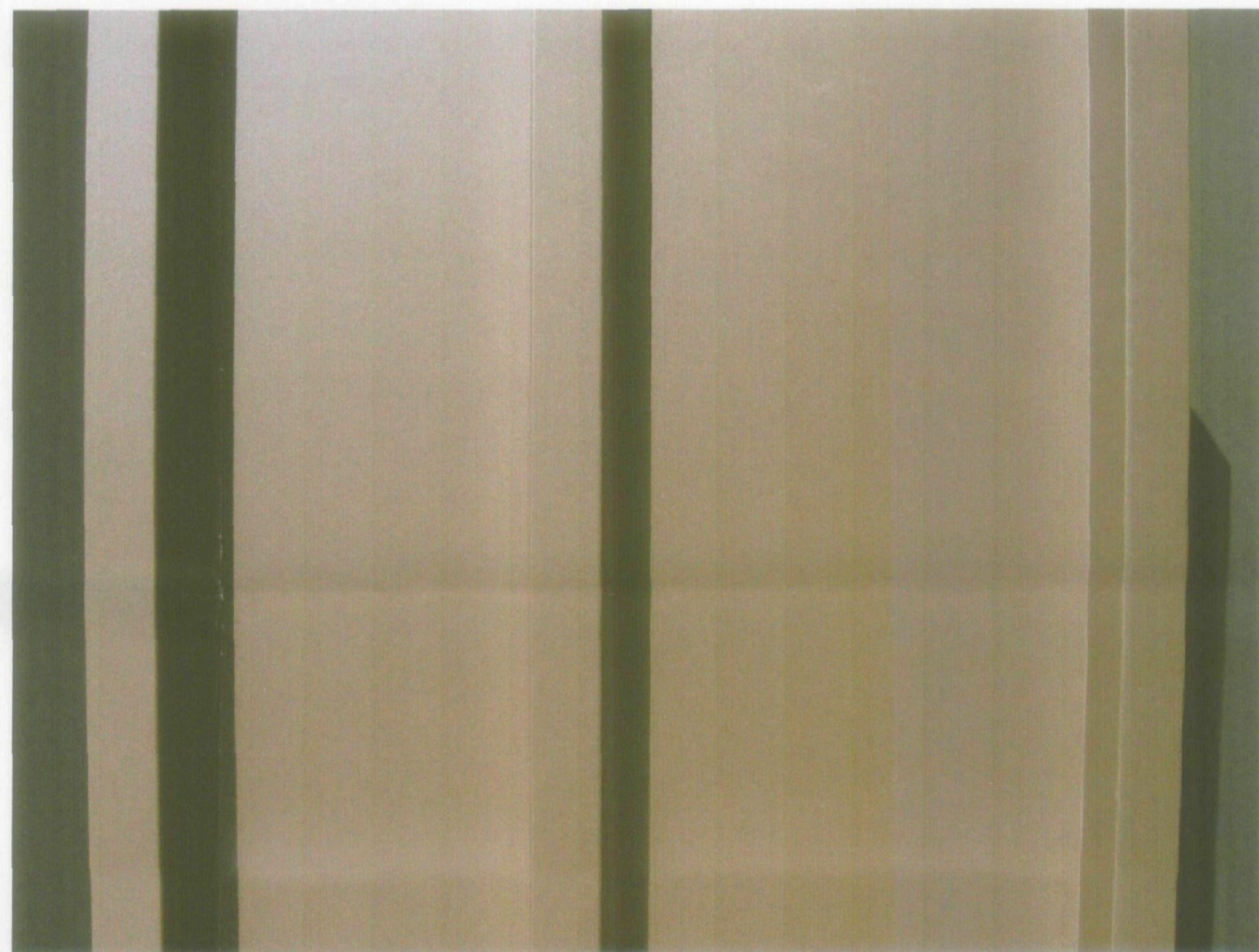
Scale: Actual

**GLAZING SYSTEM AND SHADE FINS:**  
The shade fin system provides a low-tech self-shading system as the first line of defense against the direct sun. The batt insulated 6" wall behind the spandrel glass provides additional insulation R-19 minimum. The energy efficient insulated vision glass (approximately 31" above each finish floor) provides natural light to the occupants while reducing sun glare and heat gain. The combination of these strategies provides a high performance energy efficient building shell.



Mock-up: Window wall / Fins

Scale: Actual



Mock-up: Metal Panel - Color: Copper Metallic

Scale: Actual



Mock-up: Stone - Red Sandstone

Scale: Actual



Mock-up: Stone / Metal Panel

Scale: Actual

ARCHITEKTON

464 S Farmer Ave., Suite 101  
Tempe AZ, 85281  
T 480.894.4637  
F 480.894.4638  
www.architekton.com



**Owners/Developers**

**USAA Real Estate Company**  
9830 Colonnade Blvd.  
Suite 600  
San Antonio, TX 78230-2239

**ASU Foundation**  
Fulton Center  
300 E. University Drive  
P.O. Box 2260  
Tempe, AZ 85280-2260

**HIGGINS Development Partners**  
101 East Erie Street  
Suite 800  
Chicago, IL 60611

**The Plaza Companies**  
9401 W Thunderbird Road  
Suite 200  
Peoria, AZ 85381

**SkySong 3**  
North Scottsdale Road  
Scottsdale, Arizona 85257

460-PA-2004

Development Review Board Submittal

Date: 06/18/09

Material Mock-up

**A250**