

1 West Elevation
 Scale: 1/16"=1'-0"
 0 8' 16' 32'
 SCALE: 1/16" = 1'-0"



2 East Elevation
 Scale: 1/16"=1'-0"
 0 8' 16' 32'
 SCALE: 1/16" = 1'-0"

MATERIAL / COLOR

GLASS SPANDREL PANELS (OPAQUE)
 (INTERIOR) BACKPAINTED, (EXTERIOR) NO ADDITIONAL FINISH, (METAL STUD FRAMING W/ BATT INSULATION BEHIND GLASS):
 SG1 - SPANDREL GLASS COLOR-LIGHT BLUE
 SG2 - SPANDREL GLASS COLOR-MEDIUM BLUE
 SG3 - SPANDREL GLASS COLOR-DARK BLUE
 SGX - SPANDREL GLASS COLOR-GRAY/BLUE

SPANDREL PANELS, MATTE FINISH (OPAQUE)
 (INTERIOR) BACKPAINTED, (EXTERIOR) MATTE FINISH PANEL, (METAL STUD FRAMING W/ BATT INSULATION BEHIND GLASS):
 SP1 - SPANDREL PANEL COLOR-LIGHT BLUE
 SP2 - SPANDREL PANEL COLOR-MEDIUM BLUE
 SP3 - SPANDREL PANEL COLOR-DARK BLUE

VISION GLASS
 VG1 - VISION GLASS COLOR-BLUE TINT
 VG2 - VISION GLASS CLEAR

METAL PANEL SYSTEMS
 MP1 - RIBBED METAL PANEL SYSTEM COLOR-"METALLIC COPPER"
 MP2 - FLUSH METAL PANEL SYSTEM COLOR-"METALLIC COPPER"

EXTERIOR SOFFITS
 ES1 - METAL PANEL SOFFIT COLOR-"METALLIC COPPER"
 ES2 - SOFFIT PANEL COLOR-DARK BLUE

STOREFRONT/CURTAIN WALL SYSTEM
 CW1 - ALUMINUM CURTAIN WALL BUTT GLAZE SYSTEM
 CW2 - ALUMINUM STOREFRONT BUTT GLAZE AND CAPTURED SYSTEM "METALLIC COPPER" WHERE EXPOSED ON EXTERIOR
 CW3 - CURTAIN WALL SYSTEM COLOR-"METALLIC COPPER"

SHADE FINS AND CANOPIES
 FIN1 - HORIZONTAL ALUMINUM FIN COLOR-"METALLIC COPPER" DEPTH 1'-6" (8" GAP + 12" FIN)
 FIN2 - HORIZONTAL ALUMINUM FIN COLOR-"METALLIC COPPER" DEPTH 2'-0" (8" GAP + 18" FIN)
 FIN3 - HORIZONTAL ALUMINUM FIN COLOR-"METALLIC COPPER" DEPTH 1'-6" (8" GAP + 12" FIN) WITH INTEGRAL LIGHT FIXTURE

CPY1 - ALUMINUM CANOPY 4'-6" BEYOND CURTAIN WALL COLOR-"METALLIC COPPER"
CPY2 - ALUMINUM CANOPY 2'-6" BEYOND METAL PANEL WALL (4'-6" OVERALL DEPTH) COLOR-"METALLIC COPPER"

STONE INLAY
 ST1 - STONE VENEER WITH VERTICAL METAL RIBS MATCHING THE METAL PANEL SYSTEM COLOR
 ST2 - STONE INLAY IN STRUCTURAL STEEL WIDE LANGE COLUMN OUTSIDE OF COLUMN WEB ONLY

PAINT
 PT - PAINTED STEEL COLUMNS COLOR-"METALLIC COPPER"

PLANTERS
 PL - METAL PLANTER BOX COLOR-"METALLIC COPPER"

APPROVED

 7-9-09
 DATE

ARCHITECTON

464 S Farmer Ave., Suite 101
 Tempe AZ, 85281
 T 480.894.4637
 F 480.894.4638
 www.architekton.com



- Owners/Developers**
- USA**
Real Estate Company
 9830 Colonnade Blvd.
 Suite 600
 San Antonio, TX 78230-2239
- ASU Foundation**
 Fulton Center
 300 E. University Drive
 P.O. Box 2260
 Tempe, AZ 85280-2260
- HIGGINS**
Development Partners
 101 East Erie Street
 Suite 800
 Chicago, IL 60611
- The Plaza Companies**
 9401 W Thunderbird Road
 Suite 200
 Peoria, AZ 85381

SkySong 3
 North Scottsdale Road
 Scottsdale, Arizona 85257

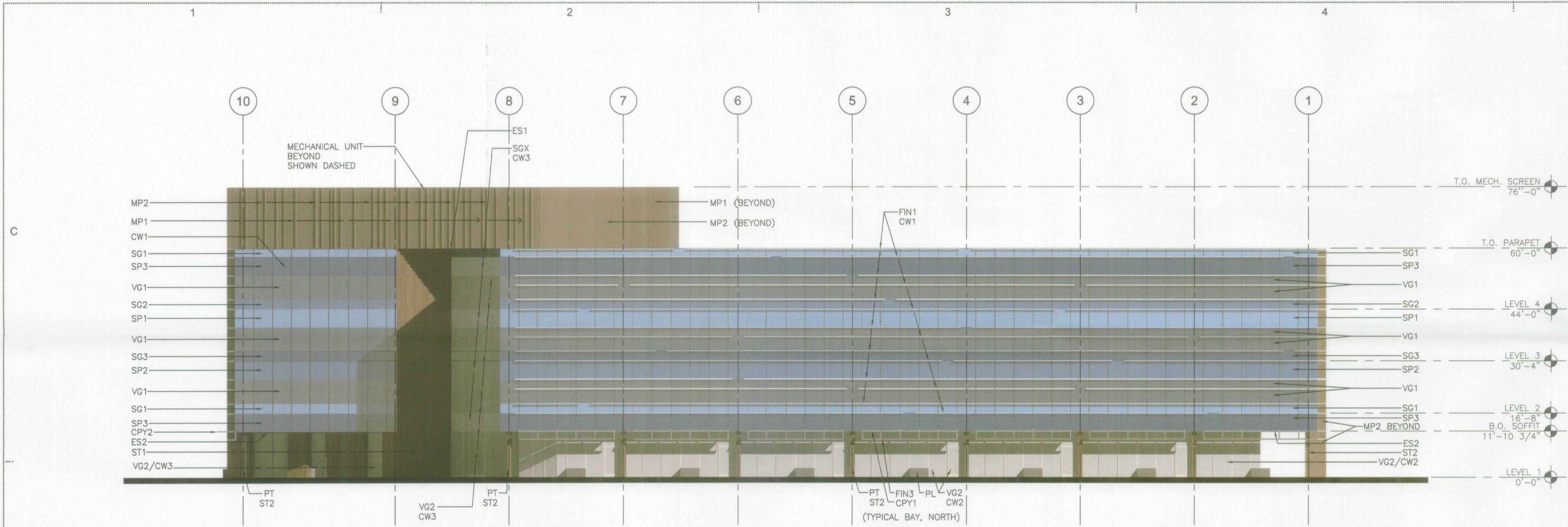
460-PA-2004

Development Review Board Submittal
 Date: 06/18/09

Exterior Elevations Color

A211

88-DR-2005#6
 6/22/2009



1 North Elevation
 Scale: 1/16"=1'-0"
 0 8' 16' 32'
 SCALE: 1/16" = 1'-0"

MATERIAL / COLOR

GLASS SPANDREL PANELS (OPAQUE)
 (INTERIOR) BACKPAINTED, (EXTERIOR) NO ADDITIONAL FINISH, (METAL STUD FRAMING W/ BATT INSULATION BEHIND GLASS):
 SG1 - SPANDREL GLASS COLOR-LIGHT BLUE
 SG2 - SPANDREL GLASS COLOR-MEDIUM BLUE
 SG3 - SPANDREL GLASS COLOR-DARK BLUE
 SGX - SPANDREL GLASS COLOR-GRAY/BLUE

SPANDREL PANELS, MATTE FINISH (OPAQUE)
 (INTERIOR) BACKPAINTED, (EXTERIOR) MATTE FINISH PANEL, (METAL STUD FRAMING W/ BATT INSULATION BEHIND GLASS):
 SP1 - SPANDREL PANEL COLOR-LIGHT BLUE
 SP2 - SPANDREL PANEL COLOR-MEDIUM BLUE
 SP3 - SPANDREL PANEL COLOR-DARK BLUE

VISION GLASS
 VG1 - VISION GLASS COLOR-BLUE TINT
 VG2 - VISION GLASS CLEAR

METAL PANEL SYSTEMS
 MP1 - RIBBED METAL PANEL SYSTEM COLOR-"METALLIC COPPER"
 MP2 - FLUSH METAL PANEL SYSTEM COLOR-"METALLIC COPPER"

EXTERIOR SOFFITS
 ES1 - METAL PANEL SOFFIT COLOR-"METALLIC COPPER"
 ES2 - SOFFIT PANEL COLOR-DARK BLUE

STOREFRONT/CURTAIN WALL SYSTEM
 CW1 - ALUMINUM CURTAIN WALL BUTT GLAZE SYSTEM
 CW2 - ALUMINUM STOREFRONT BUTT GLAZE AND CAPTURED SYSTEM "METALLIC COPPER" WHERE EXPOSED ON EXTERIOR
 CW3 - CURTAIN WALL SYSTEM COLOR-"METALLIC COPPER"

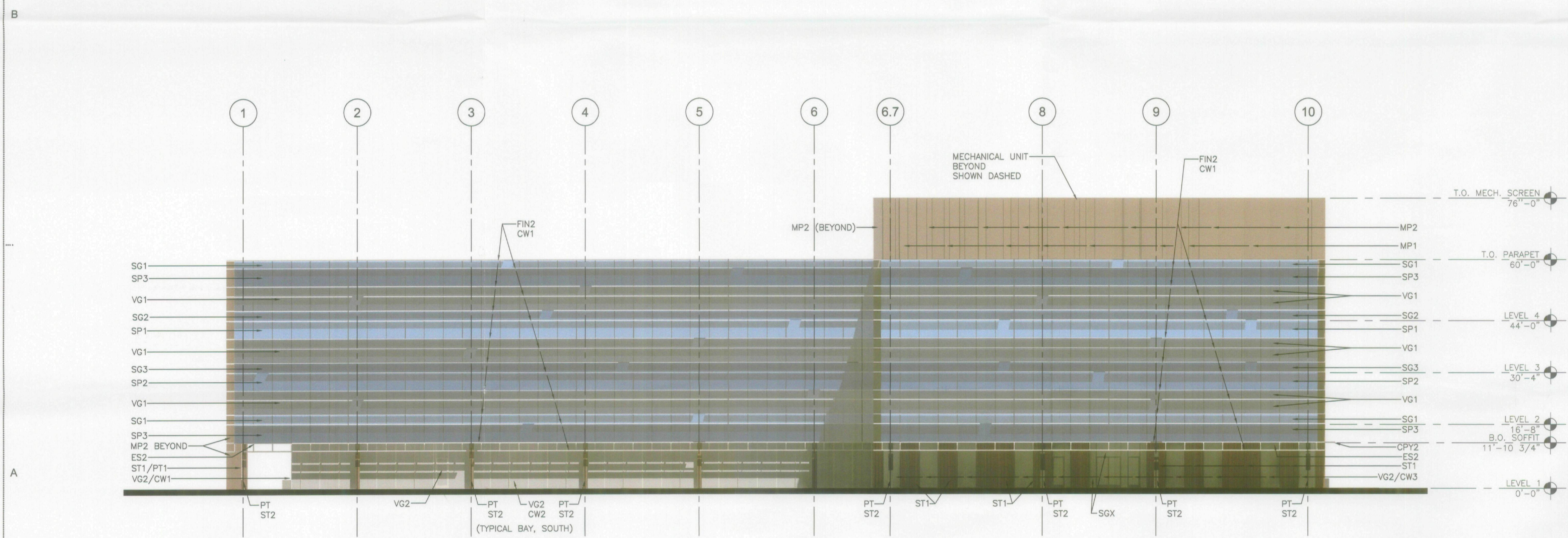
SHADE FINIS AND CANOPIES
 FIN1 - HORIZONTAL ALUMINUM FIN COLOR-"METALLIC COPPER" DEPTH 1'-6" (6" GAP + 12" FIN)
 FIN2 - HORIZONTAL ALUMINUM FIN COLOR-"METALLIC COPPER" DEPTH 2'-0" (6" GAP + 18" FIN)
 FIN3 - HORIZONTAL ALUMINUM FIN COLOR-"METALLIC COPPER" DEPTH 1'-6" (6" GAP + 12" FIN) WITH INTEGRAL LIGHT FIXTURE

CPY1 - ALUMINUM CANOPY 4'-6" BEYOND CURTAIN WALL COLOR-"METALLIC COPPER"
CPY2 - ALUMINUM CANOPY 2'-6" BEYOND METAL PANEL WALL (4'-6" OVERALL DEPTH) COLOR-"METALLIC COPPER"

STONE INLAY
 ST1 - STONE VENEER WITH VERTICAL METAL RIBS MATCHING THE METAL PANEL SYSTEM COLOR
 ST2 - STONE INLAY IN STRUCTURAL STEEL WIDE LANGE COLUMN OUTSIDE OF COLUMN WEB ONLY

PAINT
 PT - PAINTED STEEL COLUMNS COLOR-"METALLIC COPPER"

PLANTERS
 PL - METAL PLANTER BOX COLOR-"METALLIC COPPER"



2 South Elevation
 Scale: 1/16"=1'-0"
 0 8' 16' 32'
 SCALE: 1/16" = 1'-0"

APPROVED
 [Signature]
 DATE 7-9-09

ARCHITECTON

464 S Farmer Ave., Suite 101
 Tempe AZ, 85281
 T 480.894.4637
 F 480.894.4638
 www.architekton.com



Owners/Developers

USA Real Estate Company
 9830 Colomade Blvd.
 Suite 800
 San Antonio, TX 78230-2239

ASU Foundation
 Fulton Center
 300 E. University Drive
 P.O. Box 2260
 Tempe, AZ 85280-2260

HIGGINS Development Partners
 101 East Erie Street
 Suite 800
 Chicago, IL 60611

The Plaza Companies
 9401 W Thunderbird Road
 Suite 200
 Peoria, AZ 85381

SkySong 3
 North Scottsdale Road
 Scottsdale, Arizona 85257

460-PA-2004

Development Review Board Submittal

Date: 06/18/09

Exterior Elevations Color

A210

88-DR-2005#6
 6/22/2009