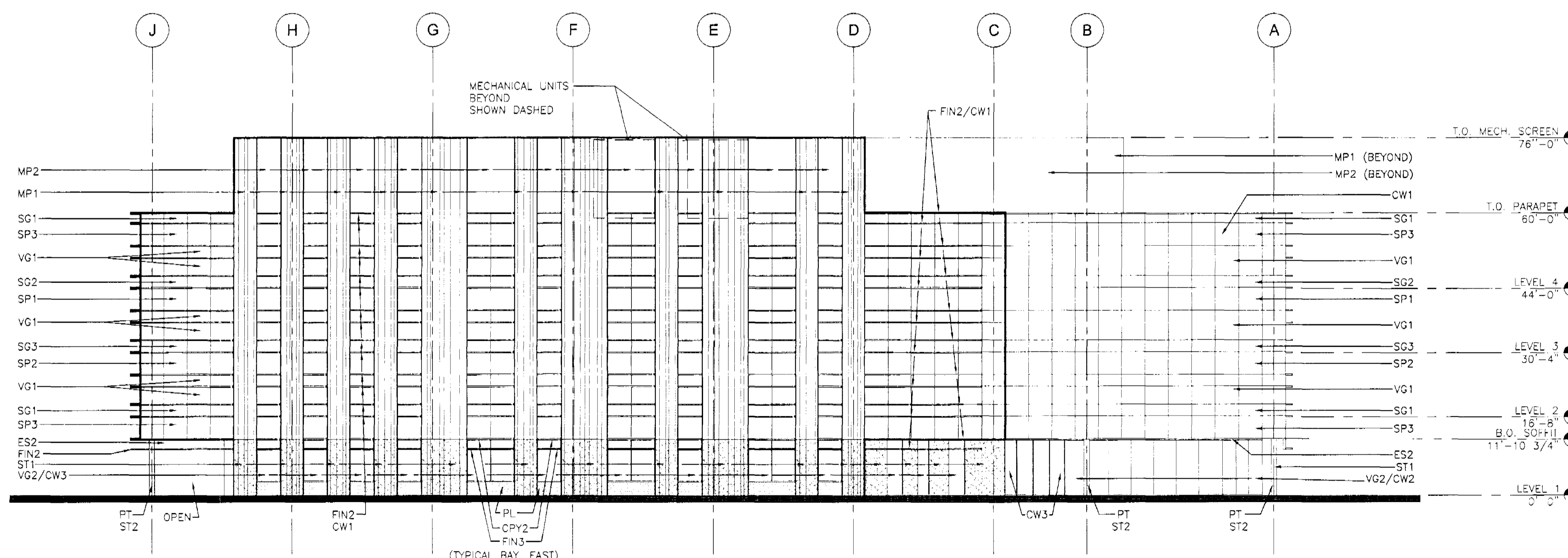


1 West Elevation
Scale: 1/16"=1'-0"



2 East Elevation
Scale: 1/16"=1'-0"

MATERIAL / COLOR

- GLASS SPANDREL PANELS (OPAQUE)
(INTERIOR) BACKPAINTED, (EXTERIOR) NO ADDITIONAL FINISH, (METAL STUD FRAMING W/ BATT INSULATION BEHIND GLASS):
SG1 - SPANDREL GLASS COLOR-LIGHT BLUE
SG2 - SPANDREL GLASS COLOR-MEDIUM BLUE
SG3 - SPANDREL GLASS COLOR-DARK BLUE
SGX - SPANDREL GLASS COLOR-GRAY/BLUE
- SPANDREL PANELS, MATTE FINISH (OPAQUE)
(INTERIOR) BACKPAINTED, (EXTERIOR) MATTE FINISH PANEL, (METAL STUD FRAMING W/ BATT INSULATION BEHIND GLASS):
SP1 - SPANDREL PANEL COLOR-LIGHT BLUE
SP2 - SPANDREL PANEL COLOR-MEDIUM BLUE
SP3 - SPANDREL PANEL COLOR-DARK BLUE
- VISION GLASS
VG1 - VISION GLASS COLOR-BLUE TINT
VG2 - VISION GLASS CLEAR
- METAL PANEL SYSTEMS
MP1 - RIBBED METAL PANEL SYSTEM COLOR-"METALLIC COPPER"
MP2 - FLUSH METAL PANEL SYSTEM COLOR-"METALLIC COPPER"
- EXTERIOR SOFFITS
ES1 - METAL PANEL SOFFIT COLOR-"METALLIC COPPER"
ES2 - SOFFIT PANEL COLOR-DARK BLUE
- STOREFRONT/CURTAIN WALL SYSTEM
CW1 - ALUMINUM CURTAIN WALL BUTT GLAZE SYSTEM
CW2 - ALUMINUM STOREFRONT BUTT GLAZE AND CAPTURED SYSTEM
"METALLIC COPPER" WHERE EXPOSED ON EXTERIOR
CW3 - CURTAIN WALL SYSTEM COLOR-"METALLIC COPPER"
- SHADE FINS AND CANOPIES
FIN1 - HORIZONTAL ALUMINUM FIN COLOR-"METALLIC COPPER"
DEPTH 1'-6" (6" GAP + 12" FIN)
FIN2 - HORIZONTAL ALUMINUM FIN COLOR-"METALLIC COPPER"
DEPTH 2'-0" (6" GAP + 18" FIN)
FIN3 - HORIZONTAL ALUMINUM FIN COLOR-"METALLIC COPPER"
DEPTH 1'-6" (6" GAP + 12" FIN) WITH INTEGRAL LIGHT FIXTURE
- CPY1 - ALUMINUM CANOPY 4'-6" BEYOND CURTAIN WALL
COLOR-"METALLIC COPPER"
CPY2 - ALUMINUM CANOPY 2'-6" BEYOND METAL PANEL WALL
(4'-6" OVERALL DEPTH) COLOR-"METALLIC COPPER"
- STONE INLAY
ST1 - STONE VENEER WITH VERTICAL METAL RIBS MATCHING THE METAL PANEL SYSTEM COLOR
ST2 - STONE INLAY IN STRUCTURAL STEEL WIDE RANGE COLUMN OUTSIDE OF COLUMN WEB ONLY
- PAINT
PT - PAINTED STEEL COLUMNS COLOR-"METALLIC COPPER"
- PLANTERS
PL - METAL PLANTER BOX COLOR-"METALLIC COPPER"

ARCHITECTON

464 S Farmer Ave., Suite 101
Tampa, AZ, 85281
T 480.894.4637
F 480.894.4638
www.architekton.com

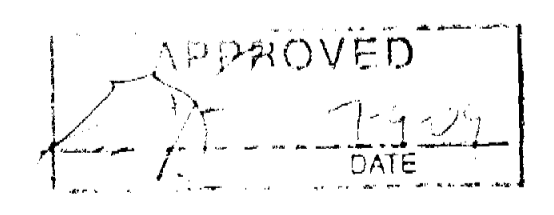


Owners/Developers

- USAA Real Estate Company**
9830 Colonnade Blvd.
Suite 600
San Antonio, TX 78230-2239
- ASU Foundation**
Fulton Center
300 E. University Drive
P.O. Box 2260
Tempe, AZ 85280-2260
- HIGGINS Development Partners**
101 East Erie Street
Suite 800
Chicago, IL 60611
- The Plaza Companies**
9401 W Thunderbird Road
Suite 200
Peoria, AZ 85381

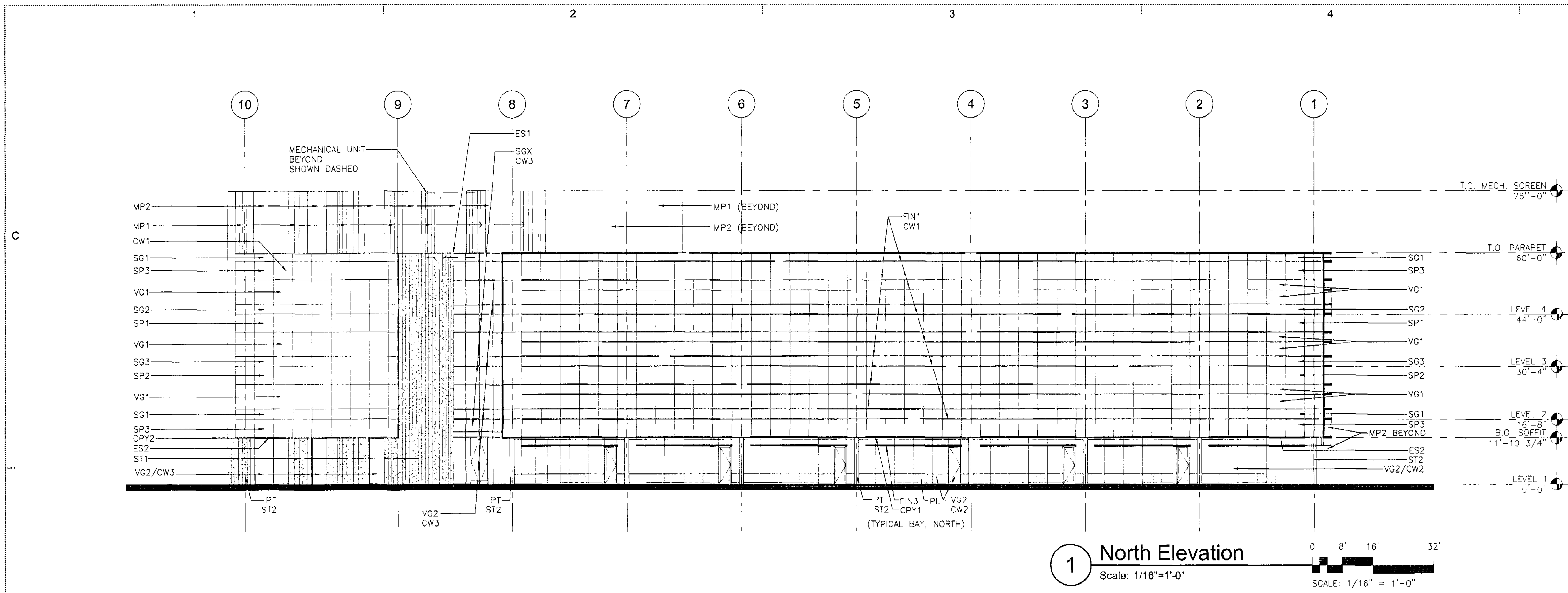
SkySong 3
North Scottsdale Road
Scottsdale, Arizona 85257

460-PA-2004

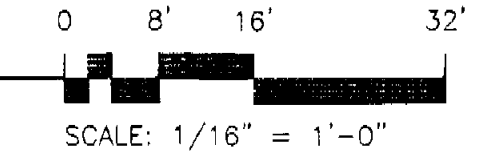


Development Review Board Submittal
Date: 06/18/09

Exterior Elevations
A201

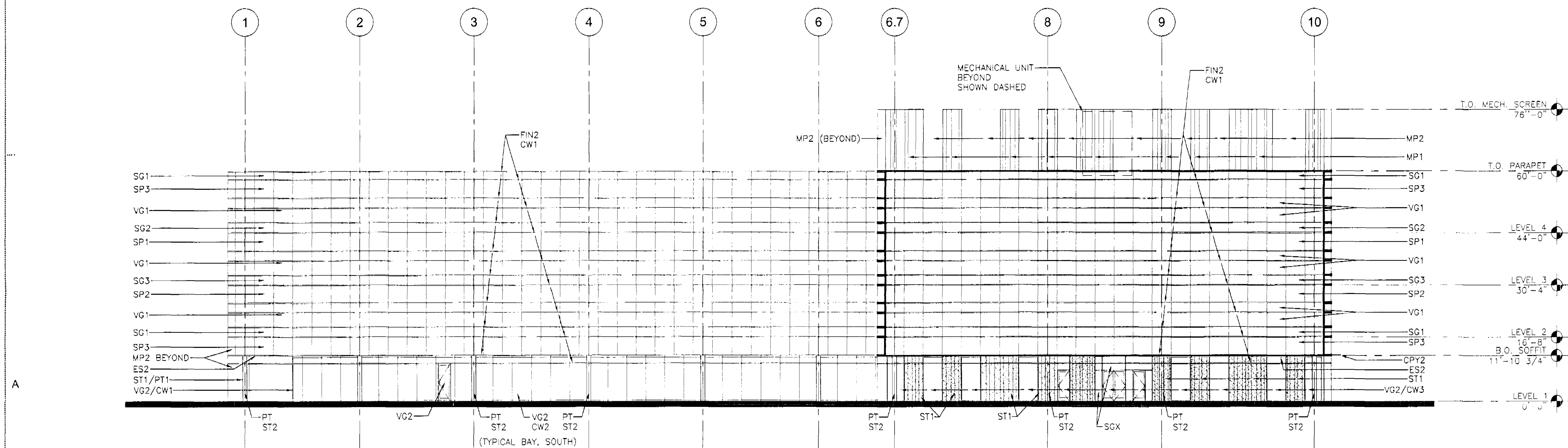


1 North Elevation
Scale: 1/16"=1'-0"

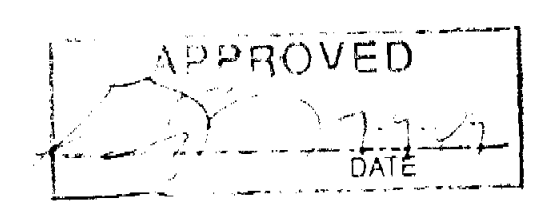
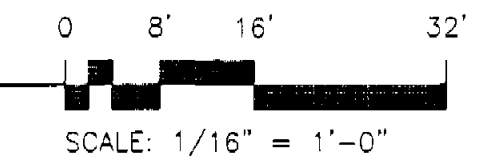


MATERIAL / COLOR

- GLASS SPANDREL PANELS (OPAQUE)
(INTERIOR) BACKPAINTED, (EXTERIOR) NO ADDITIONAL FINISH, (METAL STUD FRAMING W/ BATT INSULATION BEHIND GLASS):
SG1 - SPANDREL GLASS COLOR-LIGHT BLUE
SG2 - SPANDREL GLASS COLOR-MEDIUM BLUE
SG3 - SPANDREL GLASS COLOR-DARK BLUE
SGX - SPANDREL GLASS COLOR-GRAY/BLUE
- SPANDREL PANELS, MATTE FINISH (OPAQUE)
(INTERIOR) BACKPAINTED, (EXTERIOR) MATTE FINISH PANEL, (METAL STUD FRAMING W/ BATT INSULATION BEHIND GLASS):
SP1 - SPANDREL PANEL COLOR-LIGHT BLUE
SP2 - SPANDREL PANEL COLOR-MEDIUM BLUE
SP3 - SPANDREL PANEL COLOR-DARK BLUE
- VISION GLASS
VG1 - VISION GLASS COLOR-BLUE TINT
VG2 - VISION GLASS CLEAR
- METAL PANEL SYSTEMS
MP1 - RIBBED METAL PANEL SYSTEM COLOR-METALLIC COPPER
MP2 - FLUSH METAL PANEL SYSTEM COLOR-METALLIC COPPER
- EXTERIOR SOFFITS
ES1 - METAL PANEL SOFFIT COLOR-METALLIC COPPER
ES2 - SOFFIT PANEL COLOR-DARK BLUE
- STOREFRONT/CURTAIN WALL SYSTEM
CW1 - ALUMINUM CURTAIN WALL BUTT GLAZE SYSTEM
CW2 - ALUMINUM STOREFRONT BUTT GLAZE AND CAPTURED SYSTEM "METALLIC COPPER" WHERE EXPOSED ON EXTERIOR
CW3 - CURTAIN WALL SYSTEM COLOR-METALLIC COPPER
- SHADE FINNS AND CANOPIES
FIN1 - HORIZONTAL ALUMINUM FIN COLOR-METALLIC COPPER DEPTH 1'-6" (6" GAP + 12" FIN)
FIN2 - HORIZONTAL ALUMINUM FIN COLOR-METALLIC COPPER DEPTH 2'-0" (6" GAP + 18" FIN)
FIN3 - HORIZONTAL ALUMINUM FIN COLOR-METALLIC COPPER DEPTH 1'-6" (6" GAP + 12" FIN) WITH INTEGRAL LIGHT FIXTURE
- CPY1 - ALUMINUM CANOPY 4'-6" BEYOND CURTAIN WALL COLOR-METALLIC COPPER
CPY2 - ALUMINUM CANOPY 2'-6" BEYOND METAL PANEL WALL (4'-8" OVERALL DEPTH) COLOR-METALLIC COPPER
- STONE INLAY
ST1 - STONE VENEER WITH VERTICAL METAL RIBS MATCHING THE METAL PANEL SYSTEM COLOR
ST2 - STONE INLAY IN STRUCTURAL STEEL WIDE LANGE COLUMN OUTSIDE OF COLUMN WEB ONLY
- PAINT
PT - PAINTED STEEL COLUMNS COLOR-METALLIC COPPER
- PLANTERS
PL - METAL PLANTER BOX COLOR-METALLIC COPPER

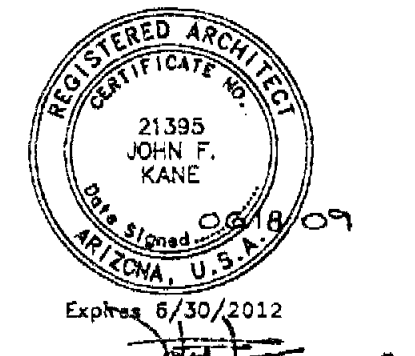


2 South Elevation
Scale: 1/16"=1'-0"



ARCHITEKTON

464 S Fanner Ave., Suite 101
Tempe AZ, 85281
T 480 894 4637
F 480 894 4638
www.architekton.com



Owners/Developers
USA Real Estate Company
9830 Colonnade Blvd.
Suite 800
San Antonio, TX 78230-2239
ASU Foundation
Fulton Center
300 E. University Drive
P.O. Box 2260
Tempe, AZ 85280-2260
HIGGINS Development Partners
101 East Erie Street
Suite 800
Chicago, IL 60611
The Plaza Companies
9401 W Thunderbird Road
Suite 200
Peoria, AZ 85381

SkySong 3
North Scottsdale Road
Scottsdale, Arizona 85257

460-PA-2004

Development Review Board Submittal
Date: 06/18/09

Exterior Elevations
A200