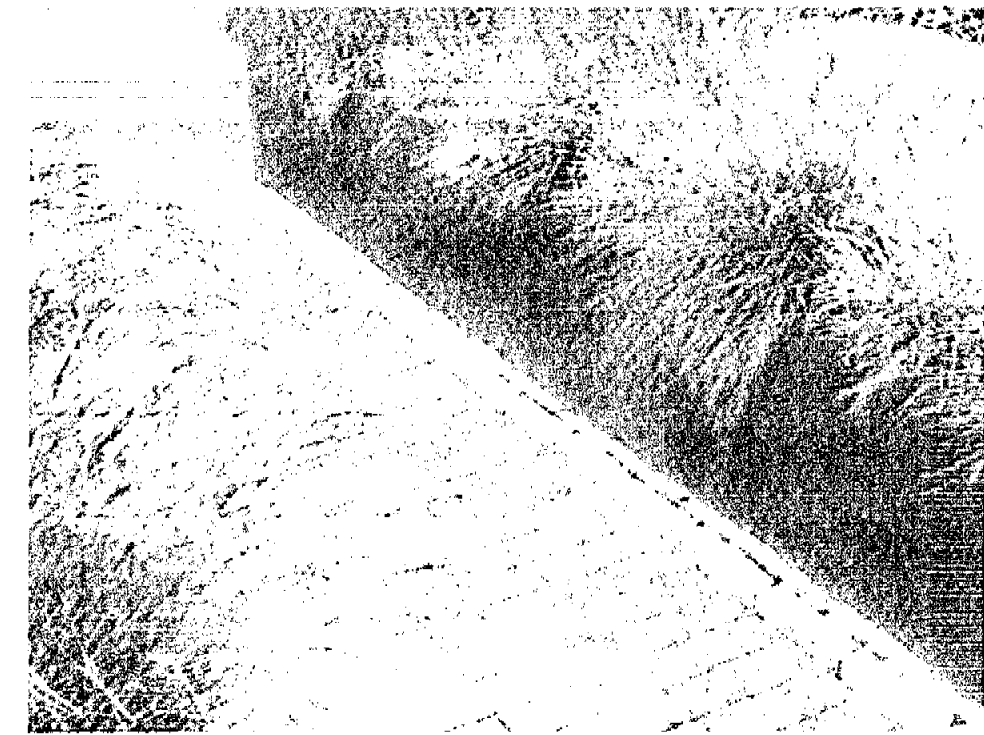


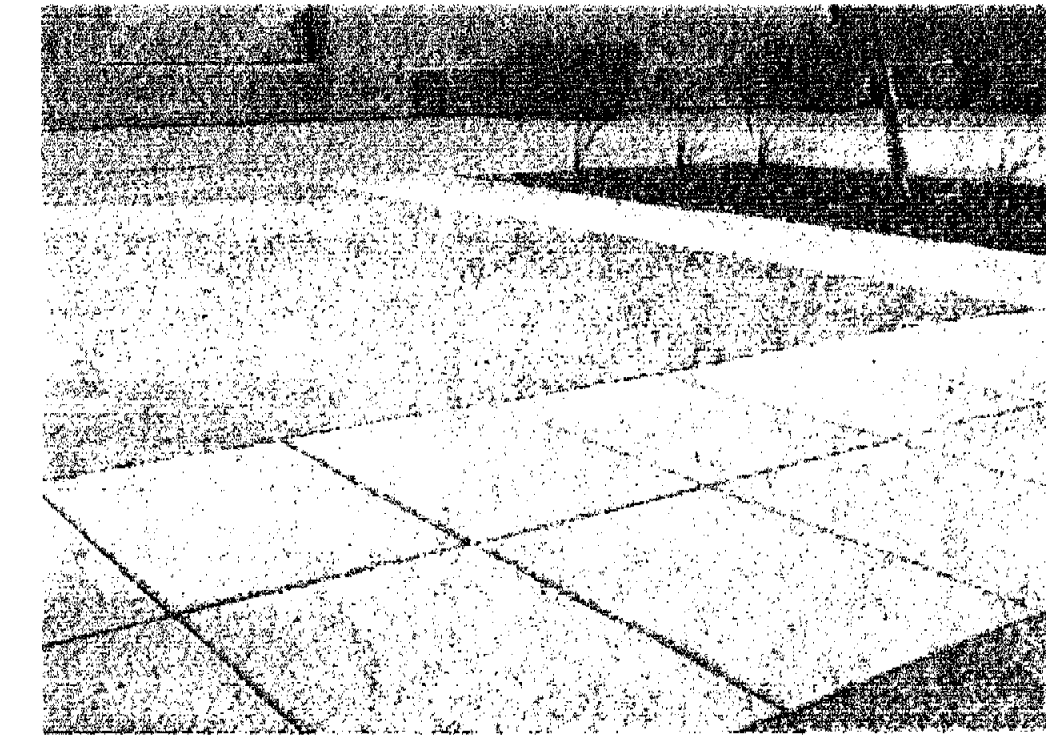
Tree Grate - Urban Accessories 'Viper' 5x5'



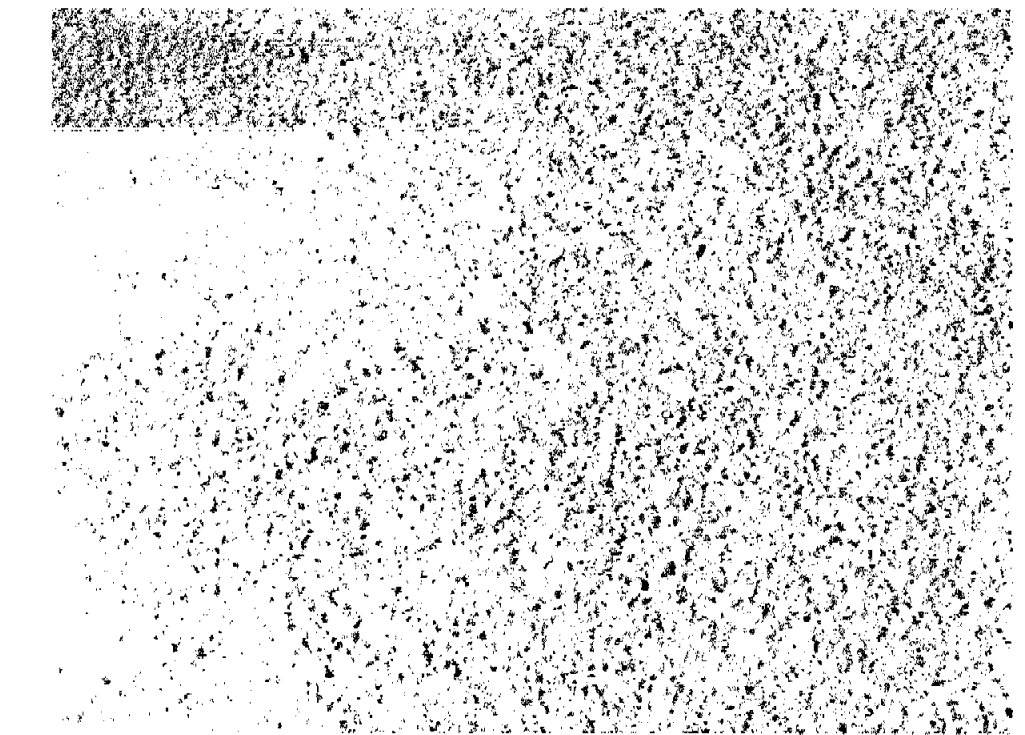
Plant Containers



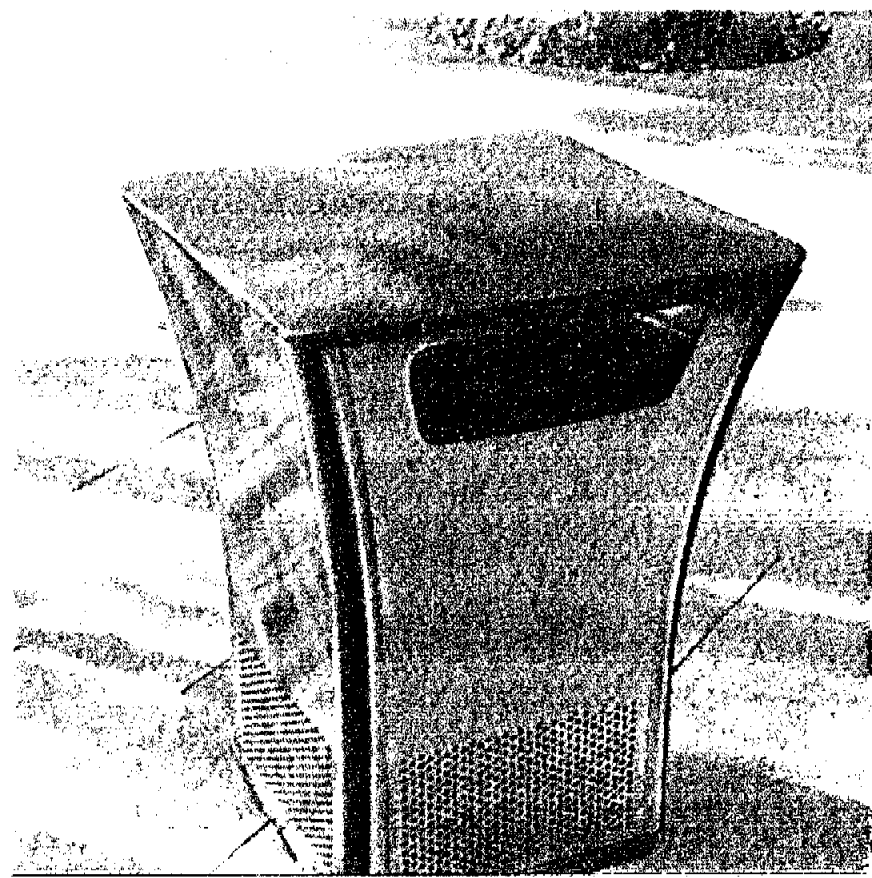
Fire Lane- Stabilized Decomposed Granite and Concrete



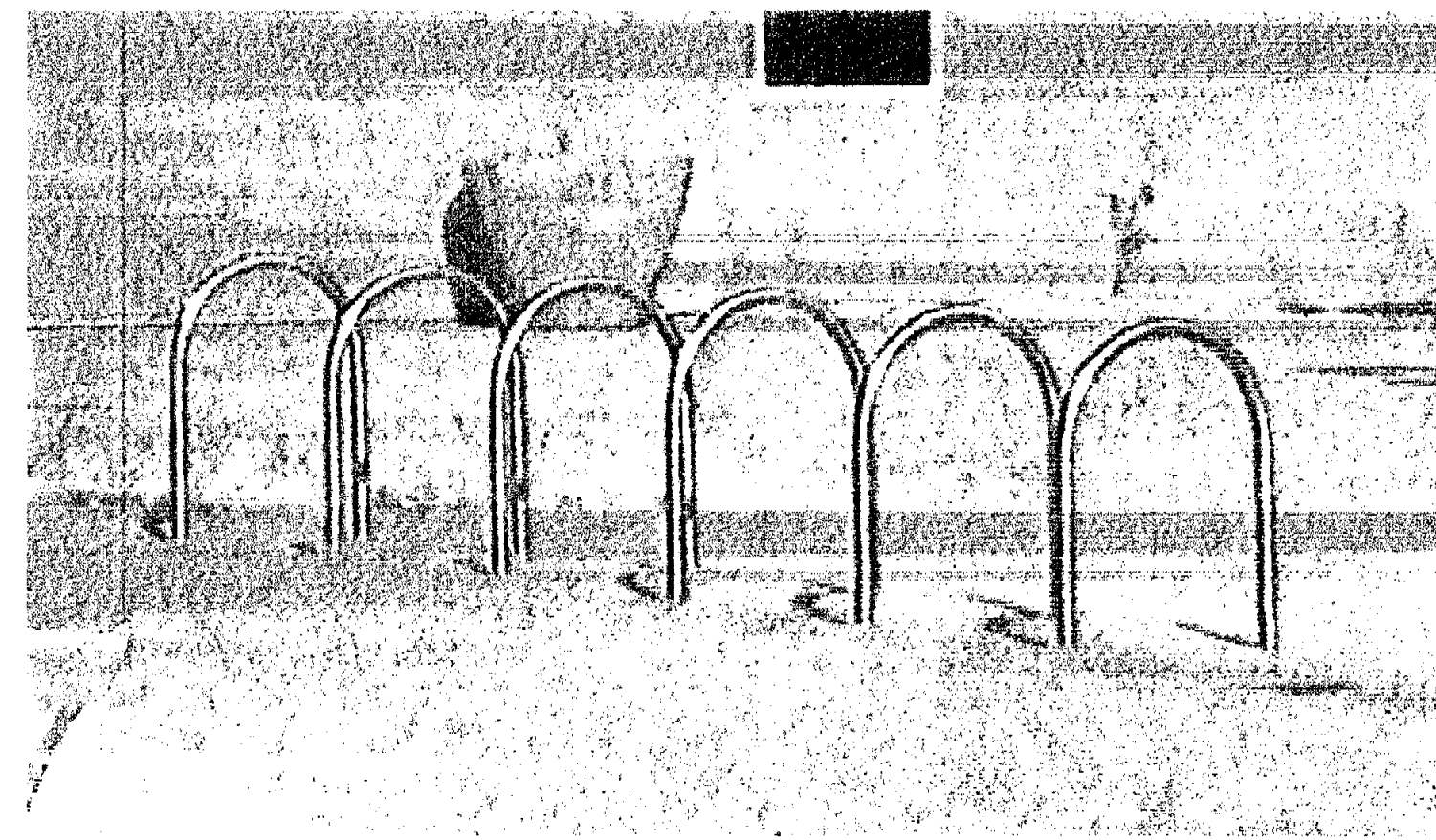
Precast Concrete Pavers



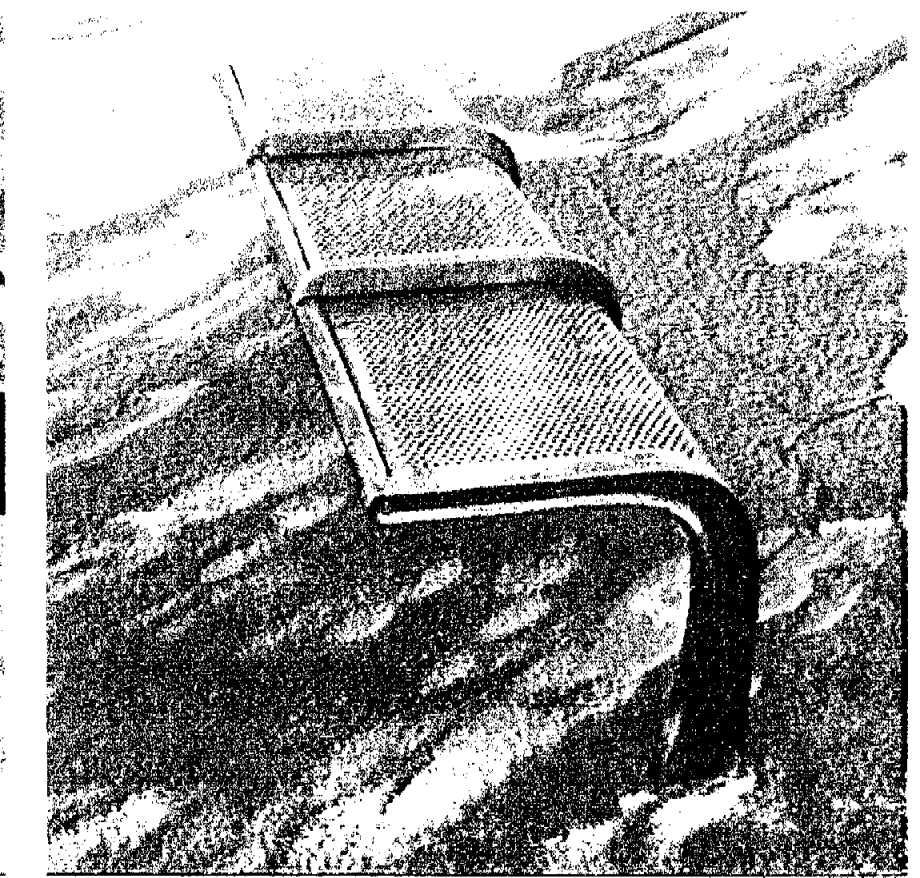
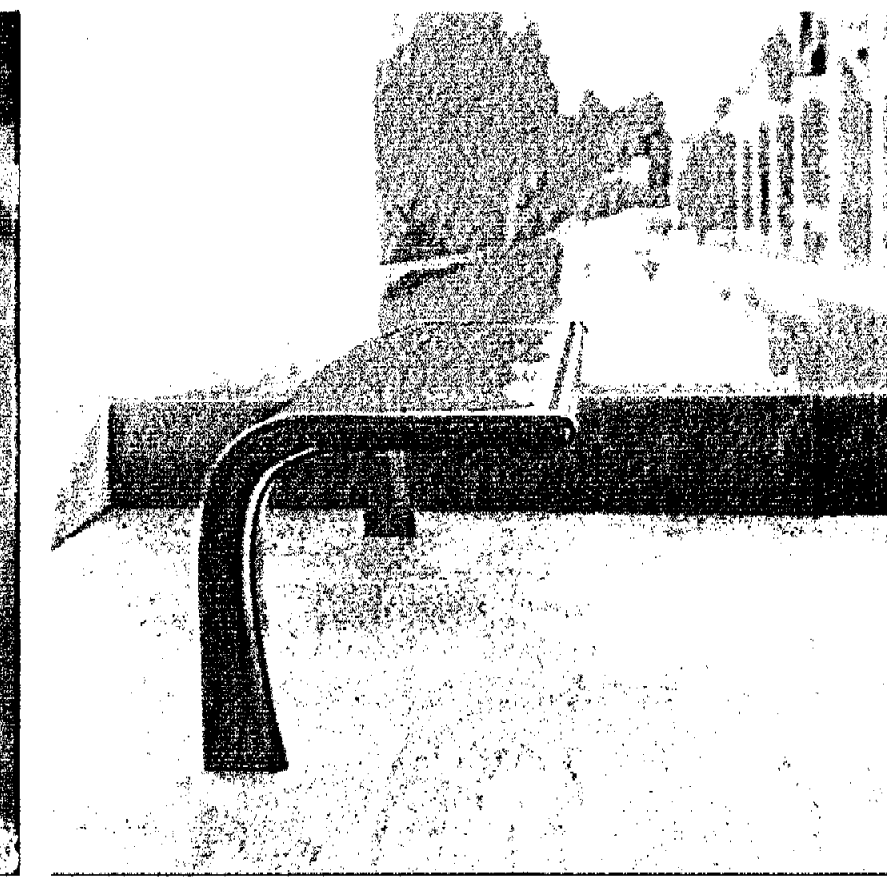
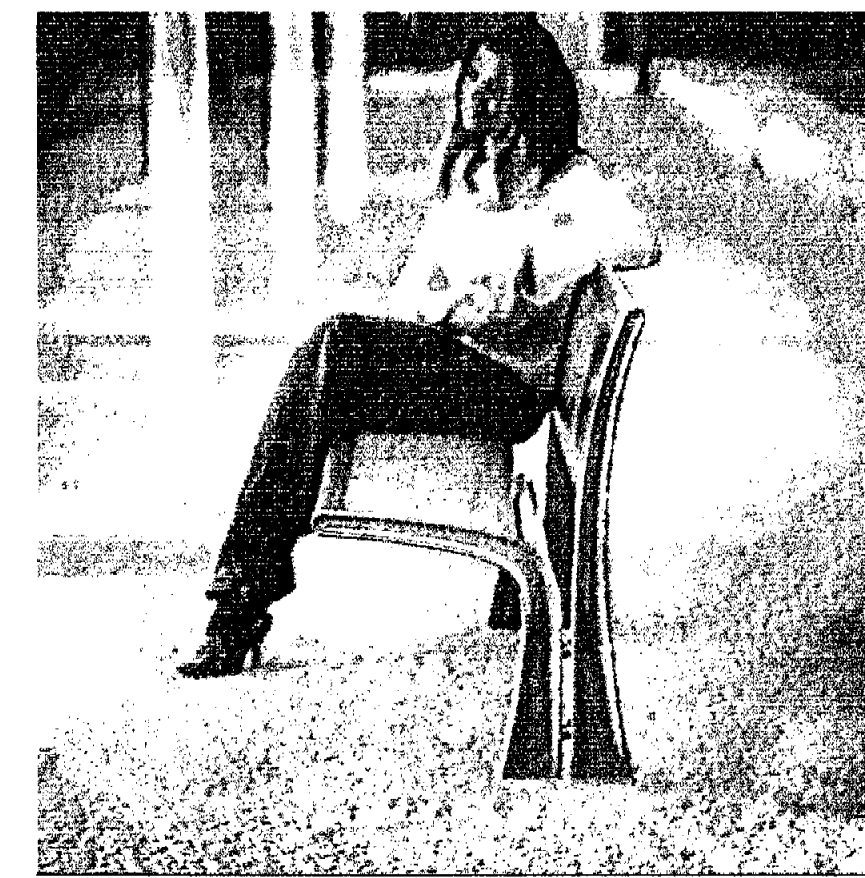
3/8" Exposed Aggregate Concrete Paving



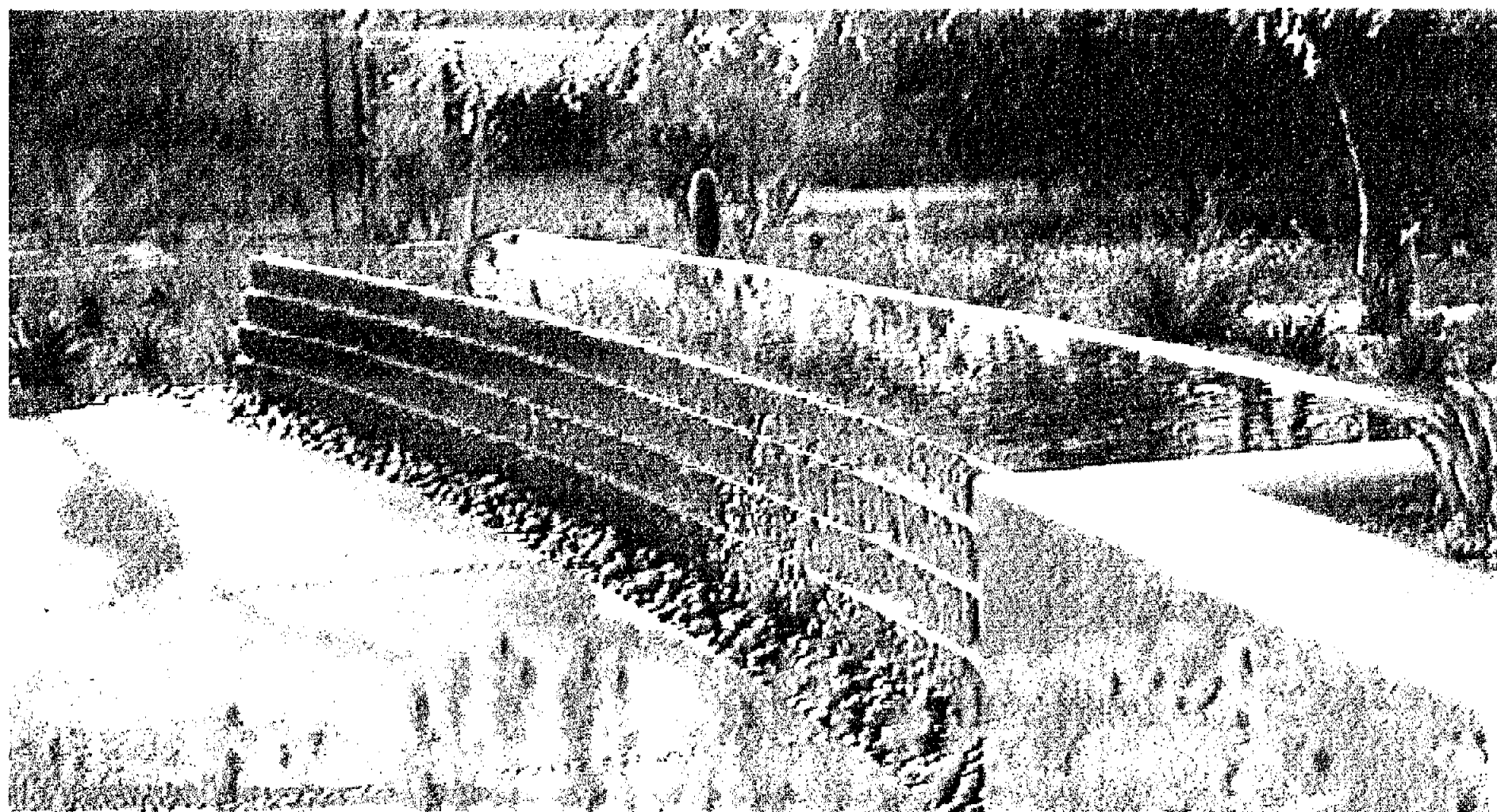
Trash Receptacle - Landscapiforms 'Pitch'



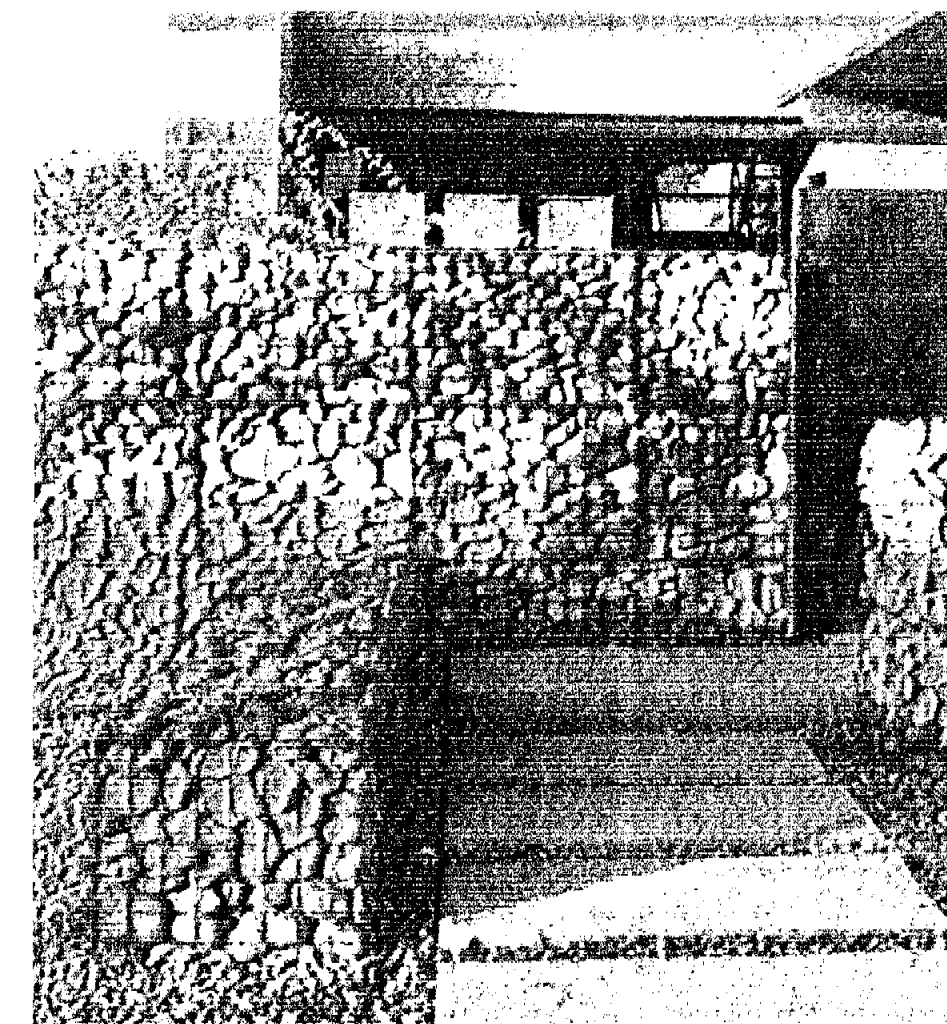
Bike Racks -Dero



Bench - Landscape Forms '35 Stay'



Water Table



Gabion



Tables and Chairs -  
Landscape Forms 'Catena'



Integral Color Concrete Davis color- "San Diego Buff"

ARCHITEKTON

484 S Farmer Ave., Suite 101  
Tempe AZ, 85281  
T 480.894.4637  
F 480.894.4638  
www.architekton.com

Ten Eyck  
LANDSCAPE ARCHITECTS



Expiration Date:  
September 30, 2010

**Owners/Developers**

**USAA**  
Real Estate Company  
9830 Colonnade Blvd.  
Suite 600  
San Antonio, TX 78230-2239

**ASU Foundation**  
Fulton Center  
300 E. University Drive  
P.O. Box 2260  
Tempe, AZ 85280-2260

**HIGGINS**  
Development Partners  
101 East Erie Street  
Suite 800  
Chicago, IL 60611

**The Plaza Companies**  
9401 W Thunderbird Road  
Suite 200  
Peoria, AZ 85381

**SkySong 3**  
North Scottsdale Road  
Scottsdale, Arizona 85257

460-PA-2004

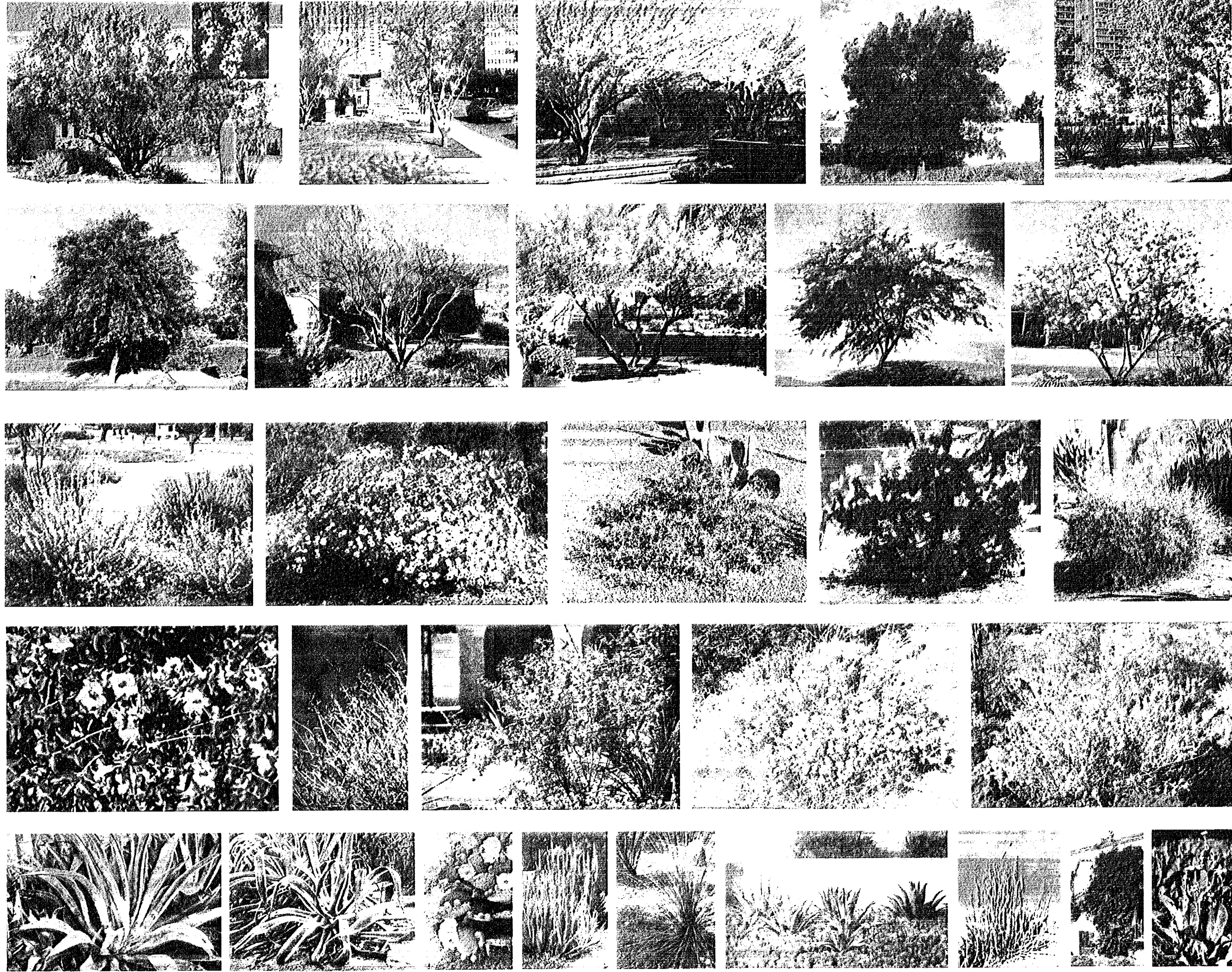
Development Review  
Board Submittal  
Date: 02/20/09

**MATERIALS**

**L1.10**

03-16-2009  
88-DR-2005-6

**NOT FOR  
CONSTRUCTION**



**EXISTING PLANTS**

**Trees**  
 Bauhinia blakeana  
 Chilopsis linearis  
 Dalbergia sissoo  
 Fraxinus velutina  
 Jacaranda mimosifolia  
 Olneya tesota  
 Parkinsonia praecox  
 Prosopis juliflora

Hong Kong Ochid Tree  
 Desert Willow  
 Sissoo Tree  
 Arizona Ash  
 Jacaranda  
 Ironwood  
 Palo Brea  
 Native Mesquite

**Shrubs**  
 Caesalpinia mexicana  
 Caesalpinia pulcherrima  
 Ericameria laricifolia  
 Euphorbia rigida  
 Justicia californica  
 Ruellia spp.  
 Tecoma stans  
 Tecoma stans

Mexican Bird of Paradise  
 Red Bird of Paradise  
 Turpentine Bush  
 Gopher Plant  
 Chuparosa  
 Ruellia  
 Arizona Yellowbells  
 Orange Jubilee

**Accents & Grasses**  
 Agave spp.  
 Asclepias subulata  
 Dasyliirion acrotriche  
 Euphorbia antispyhiitica  
 Hesperaloe parviflora  
 Nolina microcarpa  
 Pedilanthus macrocarpa  
 Stenocereus thurberi

Agave  
 Desert Milkweed  
 Green Desert Spoon  
 Candelaria  
 Red Yucca  
 Bear Grass  
 Slipper Plant  
 Organ Pipe

**Vines & Groundcovers**  
 Bougainvillea  
 Lantana species

**Trees**

Bauhinia blakeana  
 Caesalpinia cacalacao  
 Celtis reticulata  
 Chilopsis linearis  
 Dalbergia sissoo  
 Fraxinus velutina  
 Jacaranda mimosifolia  
 Olneya tesota  
 Parkinsonia floridum  
 Parkinsonia microphyllum  
 Parkinsonia praecox  
 Platanus wrightii  
 Populus fremontii  
 Prosopis juliflora  
 Prosopis chilensis Phoenix  
 Quercus virginiana  
 Sambucus mexicana  
 Ulmus parviflora  
 Washingtonia robusta

Hong Kong Ochid Tree  
 Cascalote  
 Western Hackberry  
 Desert Willow  
 Sissoo Tree  
 Arizona Ash  
 Jacaranda  
 Ironwood  
 Blue Palo Verde  
 Foothills Palo Verde  
 Palo Brea  
 Arizona Sycamore  
 Cottonwood  
 Native Mesquite  
 Phoenix Mesquite  
 Southern Live Oak  
 Mexican Elderberry  
 Chinese Evergreen Elm  
 Mexican Fan Palm

**Shrubs**

Ambrosia deltoidea  
 Bougainvillea  
 Caesalpinia mexicana  
 Caesalpinia pulcherrima  
 Calliandra californica  
 Encelia laniosa  
 Ericameria laricifolia  
 Euphorbia rigida  
 Hyptis emoryi  
 Justicia californica  
 Justicia spicigera  
 Larrea tridentata  
 Leucophyllum frutescens  
 Leucophyllum laevigatum  
 Ruellia spp.  
 Simmondsia chinensis  
 Tecoma stans  
 Tecoma stans  
 Viguiera deltoidea

Triangle Leaf Bursage  
 Shrub Bougainvillea  
 Mexican Bird of Paradise  
 Red Bird of Paradise  
 Baja Fairy Duster  
 Brittlebush  
 Turpentine Bush  
 Gopher Plant  
 Desert Lavendar  
 Chuparosa  
 Mexican Honeysuckle  
 Creosote  
 Texas Hanger Sage  
 Chihuahuan Sage  
 Ruellia  
 Jojoba  
 Arizona Yellowbells  
 Orange Jubilee  
 Goldeneye

**Accents & Grasses**

Agave spp.  
 Aloe spp.  
 Asclepias subulata  
 Bouteloua curtipendula  
 Bouteloua gracilis  
 Dasyliirion longissimum  
 Dasyliirion wheeleri  
 Dasyliirion acrotriche  
 Equisetum hyemale  
 Euphorbia antispyhiitica  
 Ferocactus wislizenii  
 Hesperaloe parviflora  
 Muhlenbergia capillaris  
 Muhlenbergia rigens  
 Nolina microcarpa  
 Opuntia basilaris  
 Opuntia ficus indica  
 Pedilanthus macrocarpa  
 Sporobolus airoides  
 Stenocereus thurberi  
 Yucca spp.

Agave  
 Aloe  
 Desert Milkweed  
 Sideoats Gramma  
 Blue Gramma  
 Toothless Desert Spoon  
 Desert Spoon  
 Green Desert Spoon  
 Horsetail Reed  
 Candelaria  
 Barrel Cactus  
 Red Yucca  
 Hegal Mist  
 Deer Grass  
 Bear Grass  
 Beavertail Prickly Pear  
 Indian Fig Prickly Pear  
 Slipper Plant  
 Alkali Sacaton  
 Organ Pipe  
 Yucca

**Vines & Groundcovers**

Anemopsis californica  
 Dysodia pentachaeta  
 Heilanthus spp.  
 Lantana montevidensis  
 Passiflora incarnate  
 Penstemon spp.  
 Podranea ricasoliana

Yerba Mansa  
 Shrubby Dogweed  
 Native Sunflower  
 Trailing Lantana  
 Passionflower Vine  
 Penstemon  
 Pink Trumpet Vine

**ARCHITTEKTON**

464 S Farmer Ave. Suite 101  
 Tempe AZ 85281  
 T: 480.894.4637  
 F: 480.894.4638  
 www.architekton.com

**Ton Eyck**  
 LANDSCAPE ARCHITECT  
 838 EAST CANTON ROAD, SUITE 100  
 PHOENIX, ARIZONA 85014  
 (602) 998-1000



Expiration Date  
 September 30, 2010

**Owners/Developers**

**USAA Real Estate Company**  
 9830 Coronado Blvd.  
 Suite 600  
 San Antonio, TX 78230-2239

**ASU Foundation**  
 Fulton Center  
 300 F. University Drive  
 P.O. Box 2260  
 Tempe, AZ 85280-2260

**HIGGINS Development Partners**  
 101 East Erie Street  
 Suite 800  
 Chicago, IL 60611

**The Plaza Companies**  
 9401 W Thunderbird Road  
 Suite 200  
 Peoria, AZ 85381

**SkySong 3**  
 North Scottsdale Road  
 Scottsdale, Arizona 85257

460-PA-2004

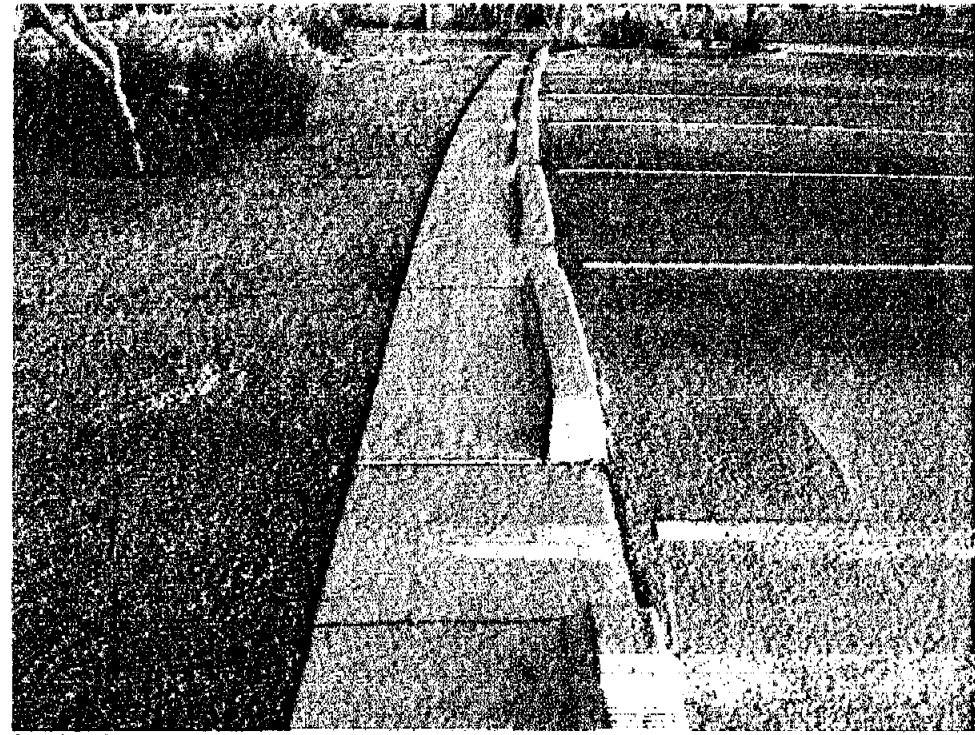
**NOT FOR CONSTRUCTION**

**PLANT MATERIAL L1.8**

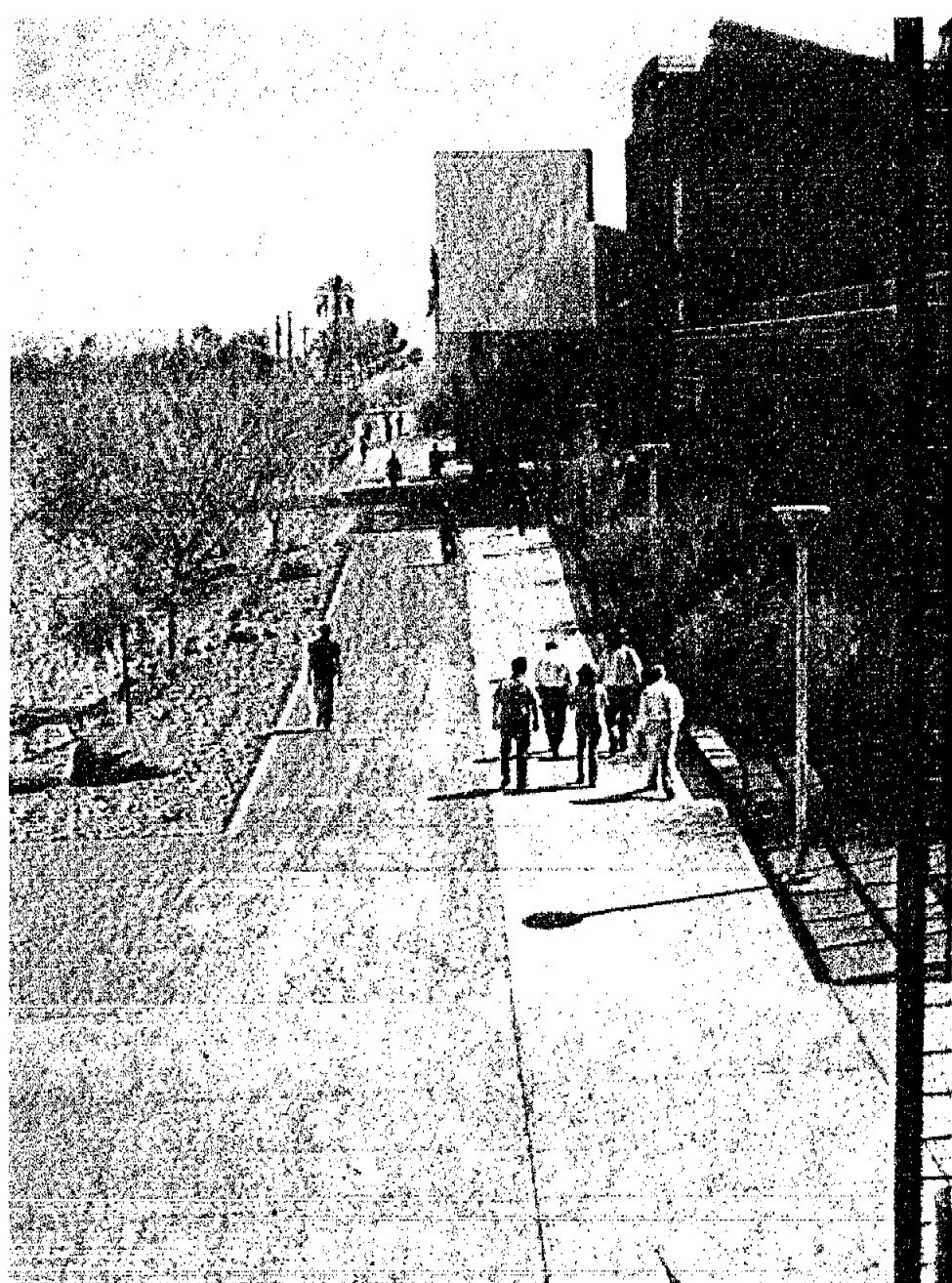
88-DR-2005-06  
 03-16-2009



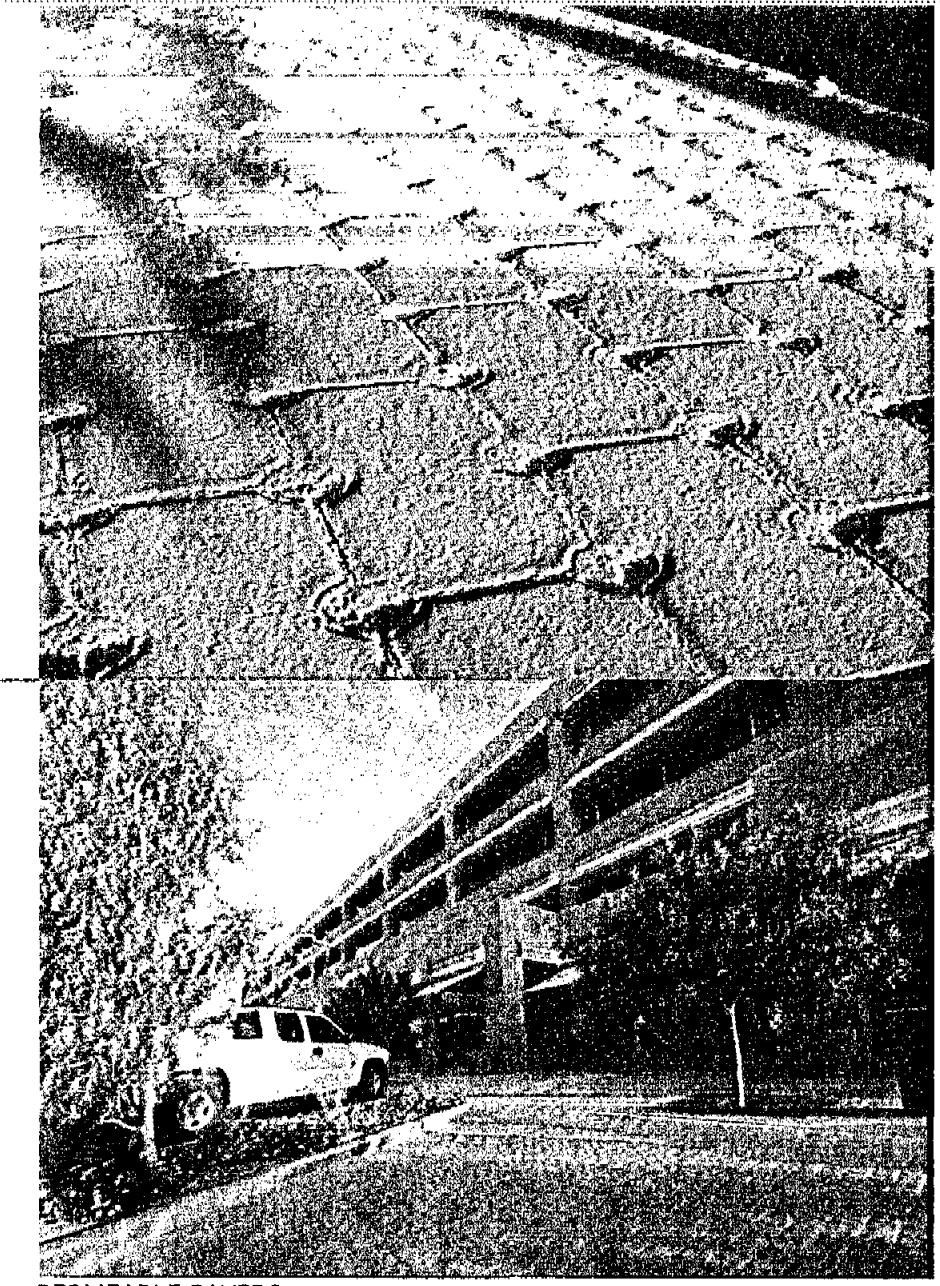
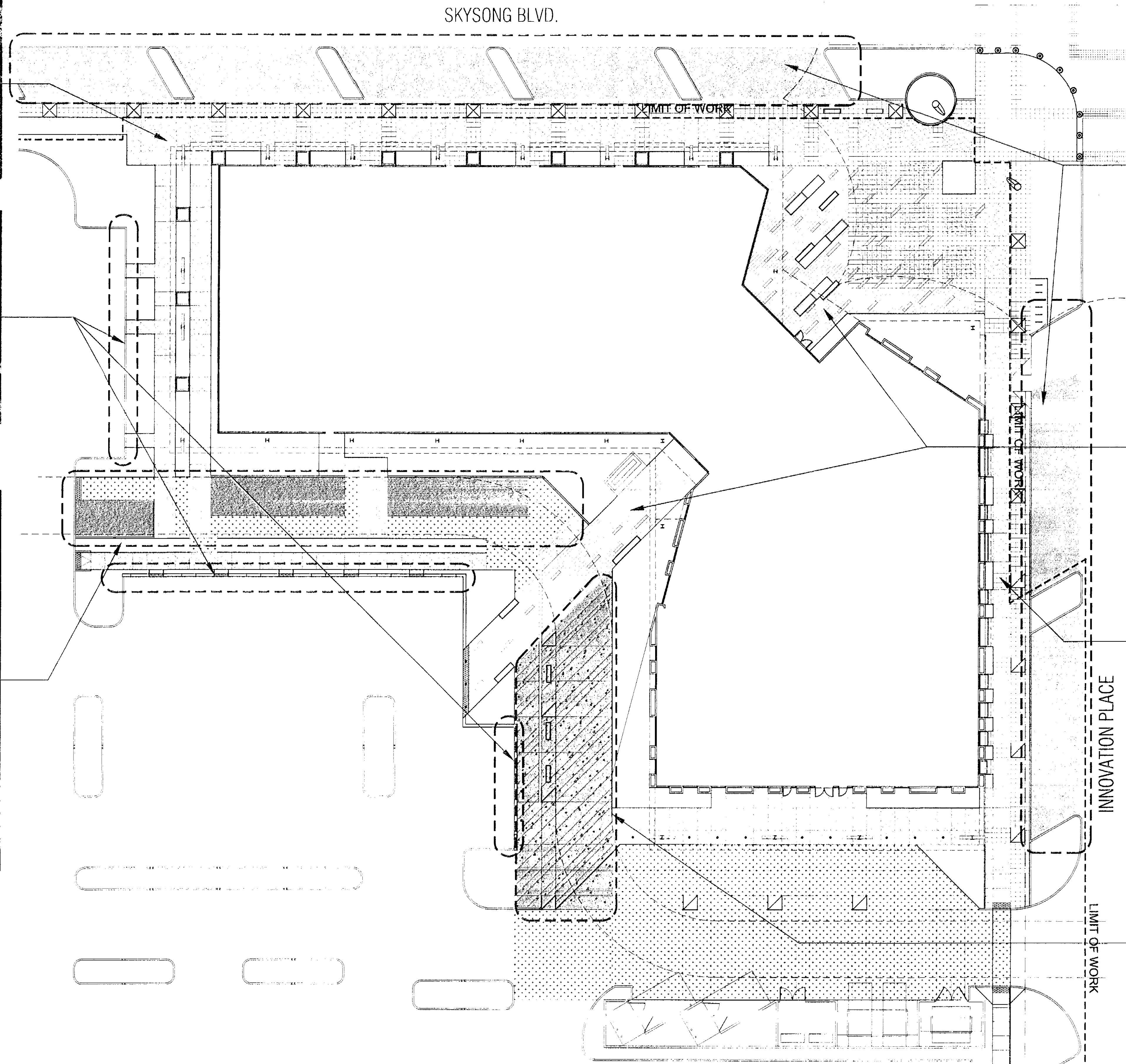
C.I.P. EXPOSED AGGREGATE CONCRETE



FLUSH CURB AND CURB STOP



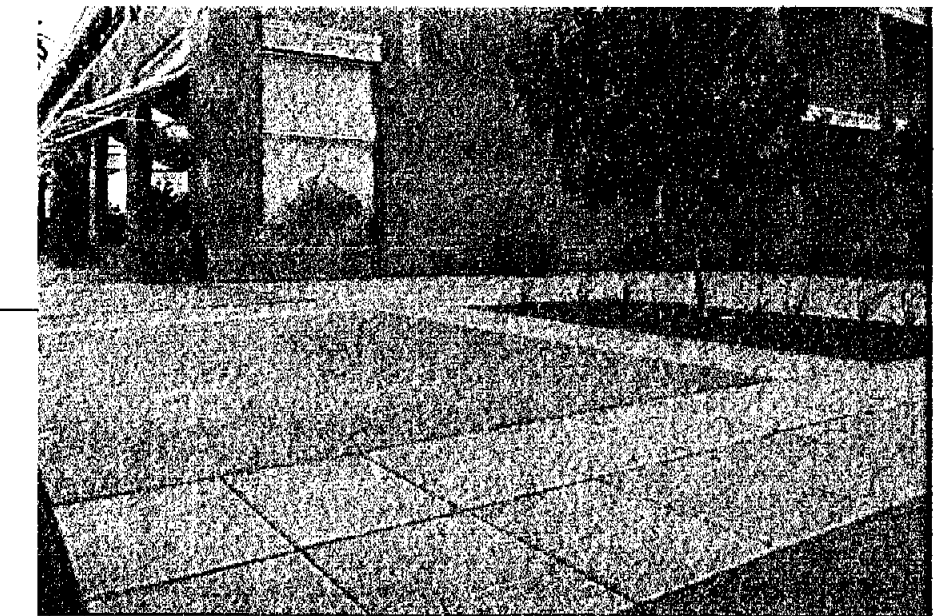
STABILIZED DECOMPOSED GRANITE



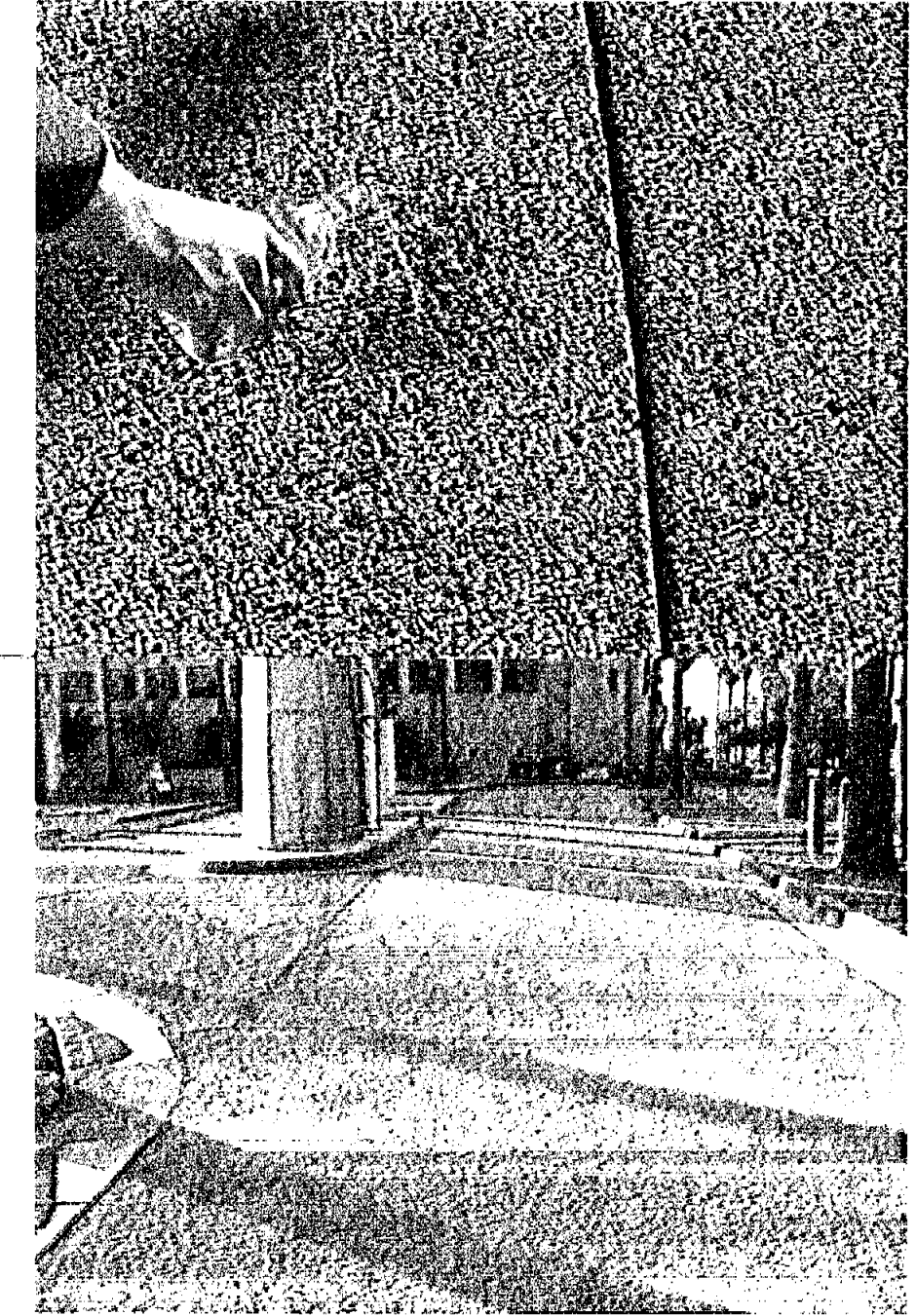
PERMEABLE PAVERS



PRECAST CONCRETE NARROW PAVERS


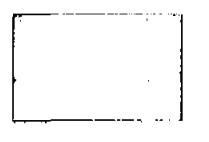
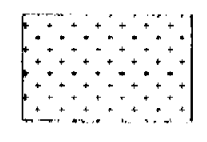

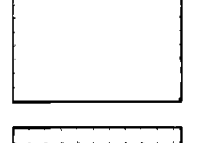

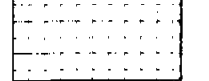


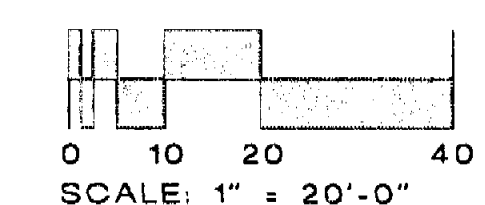
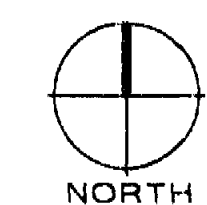
PRECAST CONCRETE 20'X20' PAVERS



POROUS CONCRETE

LEGEND

	PERMEABLE PAVERS		C.I.P. EXPOSED AGGREGATE CONCRETE		VEHICULAR C.I.P. EXPOSED AGGREGATE CONCRETE
	POROUS CONCRETE		PRECAST CONCRETE NARROW PAVERS		
	STABILIZED DECOMPOSED GRANITE		PRECAST CONCRETE 20'X20' PAVERS		



NOT FOR CONSTRUCTION

ARCHITEKTON

464 S Farmer Ave., Suite 101  
Tempe AZ, 85281  
T 480.894.4837  
F 480.894.4838  
www.architekton.com

**Ten Eyck**  
ARCHITECTS  
1025 WEST WASHINGTON ROAD, SUITE 102  
PHOENIX, ARIZONA 85014  
Tel: 602.468.1005  
Fax: 602.468.5715



Expiration Date:  
September 30, 2010

Owners/Developers

**USAA Real Estate Company**  
9830 Colonnade Blvd.  
Suite 600  
San Antonio, TX 78230-2239

**ASU Foundation**  
Fulton Center  
300 E. University Drive  
P.O. Box 2260  
Tempe, AZ 85280-2260

**HIGGINS Development Partners**  
101 East Erie Street  
Suite 800  
Chicago, IL 60611

**The Plaza Companies**  
8401 W Thunderbird Road  
Suite 200  
Peoria, AZ 85381

**SkySong 3**  
North Scottsdale Road  
Scottsdale, Arizona 85257

460-PA-2004

Development Review  
Board Submittal  
Date: 02/20/09

PAVING AREAS

**L1.6**

SS-DR-2005-6  
03-16-2009