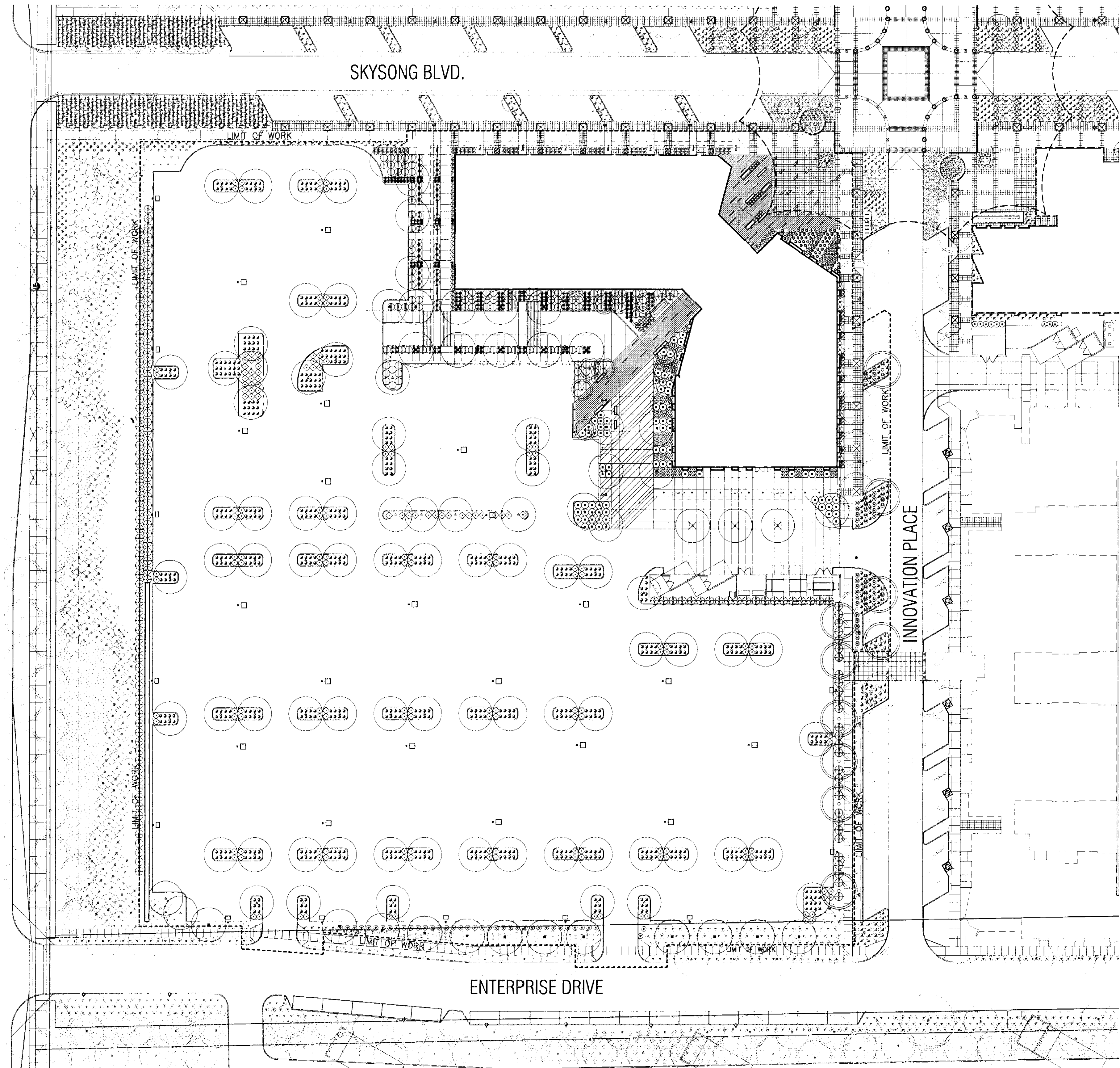


SCOTTSDALE ROAD

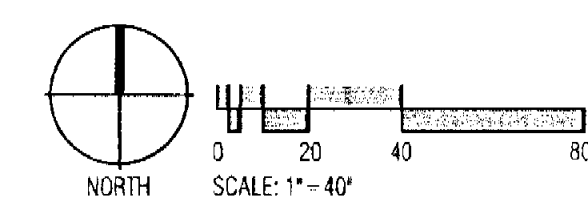
SKYSONG BLVD.



ENTERPRISE DRIVE

**PLANT LEGEND**

Symbol	Botanical Name Common Name	Size	Quantity	Remarks
<b>Trees:</b>				
	<i>Dalbergia sissoo</i> Sissoo	36" Box	26	ANA Standard - Height 15' Width 10' - Caliper 3"
	<i>Prosopis thornless hybrid</i> Native Mesquite	36" Box	90	ANA Standard - Height 10' Width 8' - Caliper 2.5"
	<i>Parkinsonia praecox</i> Palo Brea	36" Box	10	ANA Standard - Height 10' Width 8' - Caliper 2.5"
	<i>Acacia willardiana</i> Palo Blanco	36" Box	13	ANA Standard - N/A
<b>Shrubs:</b>				
	<i>Euphorbia rigida</i> Gopher Plant	5 Gallon	23	
	<i>Ericameria laricifolia</i> Turpentine Bush	1 Gallon	1736	
	<i>Jasminum sambac</i> Arabian Jasmine	5 Gallon	34	
	<i>Justicia californica</i> Chuparosa	5 Gallon	126	
	<i>Justicia spicigera</i> Mexican Honeysuckle	5 Gallon	79	
	<i>Tecoma stans v. stans</i> Gold Star	5 Gallon	163	
	<i>Portulacaria alra</i> Elephants Food	5 Gallon	72	
<b>Accents:</b>				
	<i>Aloe barbadensis</i> Yellow blooming aloe	5 Gallon	140	
	<i>Asclepias subulata</i> Desert Milkweed	1 Gallon	55	
	<i>Dasylirion acrotiche</i> Green Desert Spoon	5 Gallon	177	
	<i>Dasylirion longissimum</i> Mexican Grass Tree	5 Gallon	7	
	<i>Equisetum hyemale</i> Horse Tail Reed	5 Gallon	50	
	<i>Hesperaloe parviflora</i> Red Yucca	5 Gallon	39	
	<i>Hesperaloe funifera</i> Giant Hesperaloe	5 Gallon	140	
	<i>Pedilanthus macrocarpus</i> Slipper Plant	5 Gallon	58	
	<i>Sansevieria cylindrica</i> Spear Sansevieria	5 Gallon	105	
<b>Vines / Groundcovers:</b>				
	<i>Lantana species</i> Lantana 'New Gold'	1 Gallon	630	
	<i>Setcreasea pallida</i> Purple Heart Plant	1 Gallon	135	
<b>Inerts:</b>				
No Symbol	3/4" minus decomposed granite - 'Apache Brown' (typical in all planting areas)			



APPROVED  
  
 DATE

**NOT FOR  
CONSTRUCTION**

460-PA-2004

ARCHITEKTON

464 S Farmer Ave., Suite 101  
 Tempe AZ, 85281  
 T 480.894.4637  
 F 480.894.4638  
 www.architekton.com

**Ten Eyck**  
 LANDSCAPE ARCHITECTS  
 975 EAST CASHEN ROAD, SUITE 100  
 PHOENIX, ARIZONA 85024  
 TEL 602.498.0257  
 FAX 602.498.0258

2/23/10  
 CHRISTINE E. TEN EYCK  
 State Expires 5/1/09  
 ARIZONA, U.S.A.  
 Expiration Date:  
 September 30, 2010

**Owners/Developers**

- USAA Real Estate Company**  
 9830 Colonnade Blvd.  
 Suite 600  
 San Antonio, TX 78230-2239
- ASU Foundation**  
 Fulton Center  
 300 E. University Drive  
 P.O. Box 2260  
 Tempe, AZ 85280-2260
- HIGGINS Development Partners**  
 101 East Erie Street  
 Suite 800  
 Chicago, IL 60611
- The Plaza Companies**  
 9401 W Thunderbird Road  
 Suite 200  
 Peoria, AZ 85381

**SkySong 3**  
 North Scottsdale Road  
 Scottsdale, Arizona 85257

Development Review  
 Board Submittal  
 Date: 05/8/09

PLANTING PLAN  
**L1.3**

88-DR-2005#6  
 2nd: 5/12/09