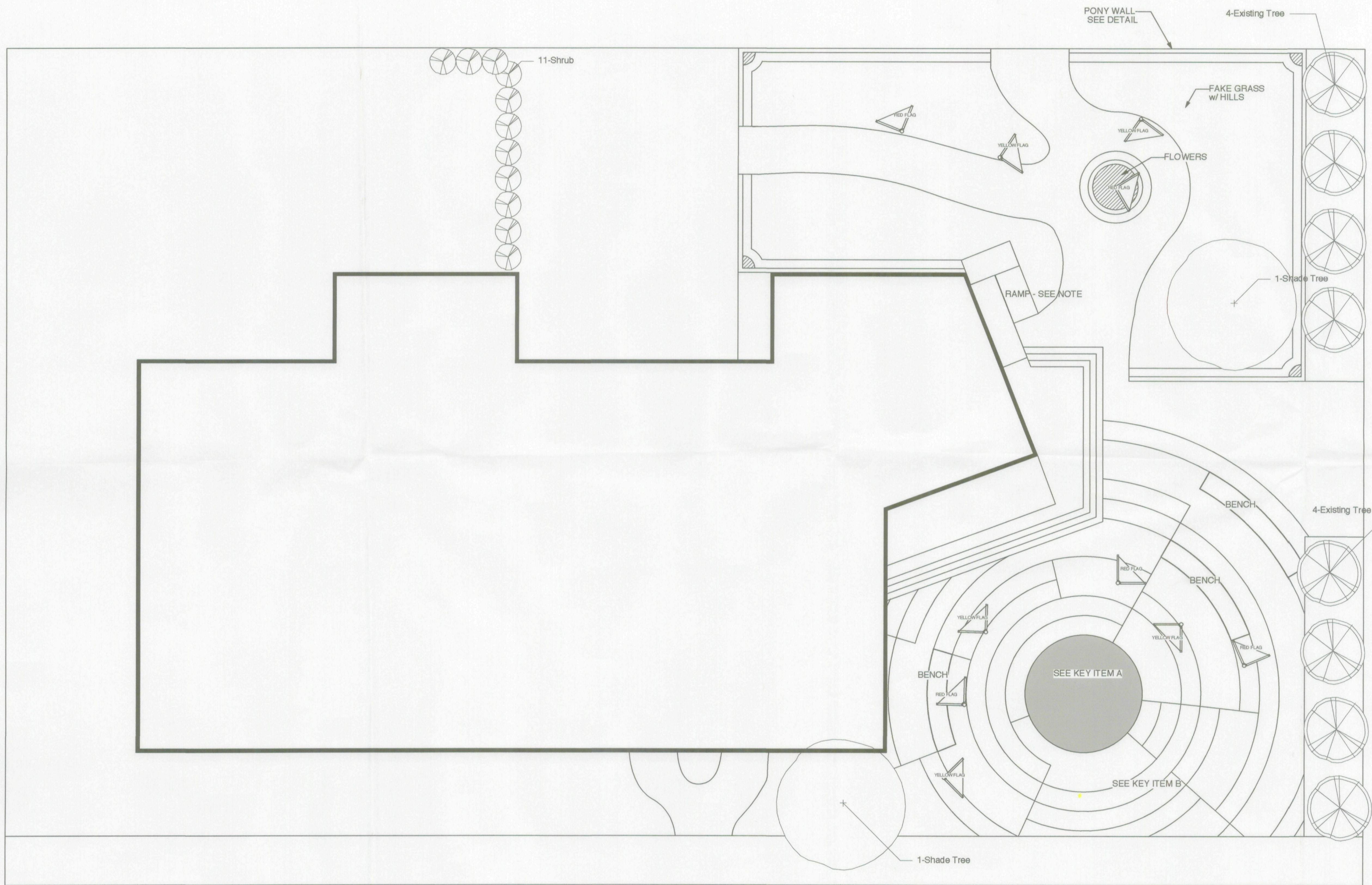


**NOT WORKING DRAWINGS**

-TOTAL LINEAR FEET OF PONYWALL= 218'- 10"  
 -RAMP TOTAL HEIGHT = 20 1/2"  
 -AS PER ADAAG 4.8, 20'-6" NEEDED FOR RAMP  
 -CENTER CIRCLE PAVERS INDIVIDUALLY LAID  
 -FRONT



**KEY**

FLAGS- SEE DETAILS

**KEY ITEM A- RUBBER STONE PAVERS AVAILABLE THROUGH:**  
 Rubber Designs  
 9489 Opal Avenue  
 Mentone, CA 92359

"It provides a safe, lightweight, comfortable alternative to other stone products. The realistic look, texture and durability are designed for walking paths, steps and patios."

**KEY ITEM B- RUBBER POUR IN PLACE SURFACING AVAILABLE THROUGH:**  
 FLIEXGround  
 9026 N 83rd PL,  
 Scottsdale, AZ 85258

"FlexGround provides an environmentally friendly, slip resistant, aesthetically pleasing yet low-maintenance safety surface."

THIS DRAWING AND ALL THE IDEAS, ARRANGEMENTS, DESIGNS AND PLANS INDICATED THEREIN OR REPRESENTED THEREBY ARE OWNED BY AND REMAIN THE PROPERTY OF THE DESIGNER AND HAVE BEEN CREATED AND DEVELOPED FOR USE ON AND IN CONNECTION WITH THIS SPECIFIC PROJECT. NEITHER THE DRAWING NOR ANY OF SUCH IDEAS, ARRANGEMENTS, DESIGNS OR PLANS SHALL BE APPROPRIATED BY OR DISCLOSED TO ANY PERSON, FIRM, OR CORPORATION FOR ANY USE OR PURPOSE WHATSOEVER EXCEPT BY THE WRITTEN PERMISSION OF THE DESIGNER. THE IMPLEMENTATION OF THIS DESIGN MUST APPLY WITH THE MOST STRINGENT FEDERAL AND LOCAL SAFETY AND FIRE CODES. ALL DRAWINGS, LISTS, AND DRAFTS REPRESENT DESIGN INTENT AND VISUAL CONCEPTS ONLY. THE DESIGNER IS UNQUALIFIED TO DETERMINE STRUCTURAL APPROPRIATENESS OF THIS DESIGN AND WILL NOT ASSUME RESPONSIBILITY FOR IMPROPER ENGINEERING, CONSTRUCTION, HANDLING, OR USE OF EQUIPMENT WHICH IMPLEMENTS THIS DESIGN.



**STAGEBRUSH GROUNDPLAN**

DESIGN: TODD HULETT  
 ARTISTIC DIRECTOR: MICHAEL BARNARD  
 CITY OF SCOTTSDALE COMMUNITY DEVELOPMENT STAFF APPROVAL  
**SITE PLAN**

SITE PLAN WAS APPROVED BY STAFF WITH STIPULATIONS AS NOTED ON THE SITE PLAN. APPROVAL OF THIS DESIGN DOES NOT CONSTITUTE APPROVAL OF ANY MATERIALS THAT ARE CONTRARY TO THE BUILDING CODE OF THE CITY OF SCOTTSDALE.

10-23-09

SHEET **A** SCALE: 1/8" = 1'-0" DATE: 20 JUL 2009 REVISIONS: 20 JUL 2009 INITIALS:

**A** GROUNDPLAN  
 SCALE 1/8" = 1'-0"