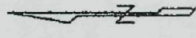
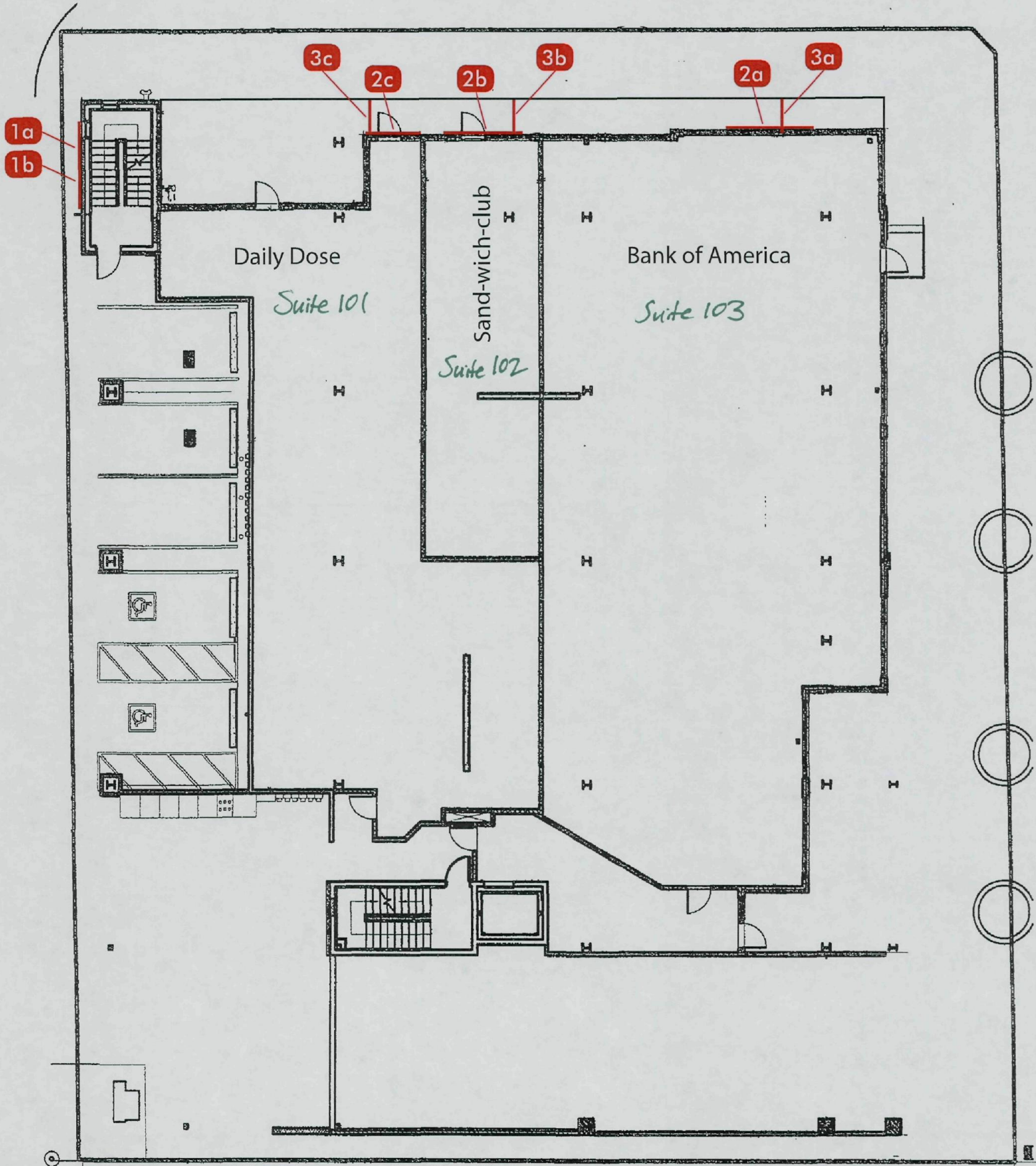


20080915673

EXHIBIT A



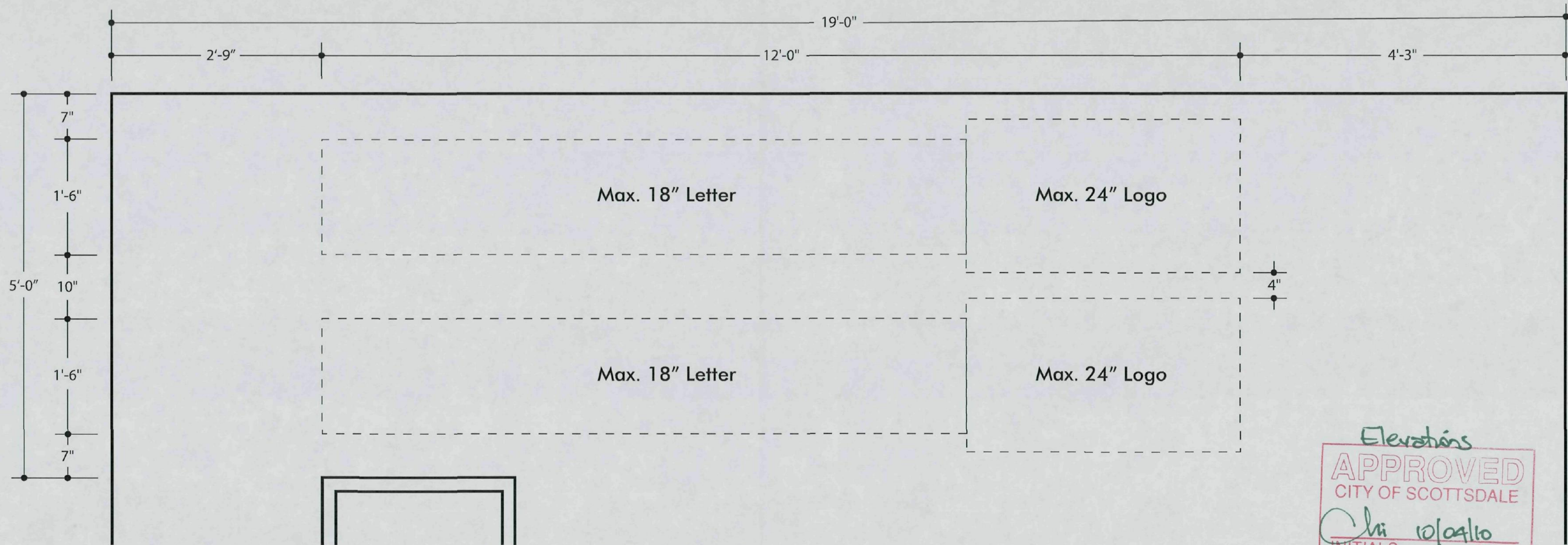
SCOTTSDALE ROAD



41-DR-2007 #3

Site Plan
APPROVED
CITY OF SCOTTSDALE
INITIALS *Chi 10/21/10*
DATE

Tower Sign Specifications



North Building Elevation

Scale: 3/4" = 1'-0"

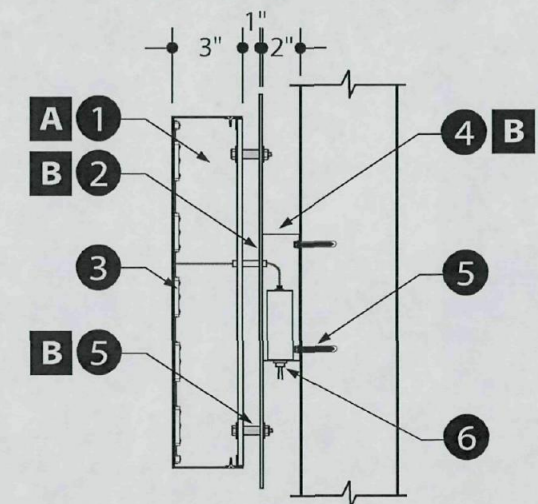
Elevations
APPROVED
 CITY OF SCOTTSDALE
Chi 10/04/10
 INITIALS DATE
 A1-DR-2007#3

1 Tower Wall Sign - Halo Illuminated Reverse Pan Channel Letter /Logo with Backer Panel

Color Key

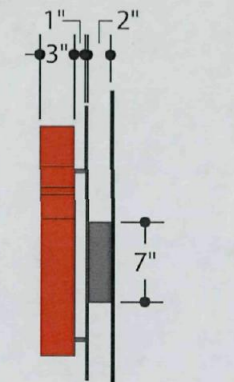
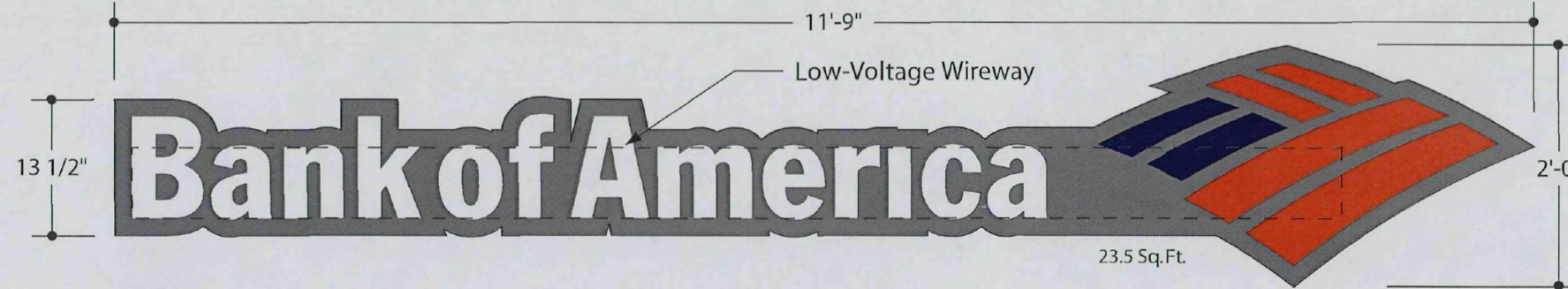
- A** MAP Custom Color TBD
- B** MAP 25843 Victorian Teal

- 1 Reverse Channel Letters:** Reverse pan channel letter/logo w/ paint finish.
Letter Face/Returns: .125 aluminum with 3" deep .063 aluminum returns.
Letter Backs: .150 waterjet-cut clear Lexan w/ perimeter alum. angle clips.
- 2 Backer Panel:** .125 Plate aluminum with MAP paint finish.
- 3 Illumination:** ILT-2x2-W Quad LED modules wired to remote Low-Voltage UL power supplies located in rear wireway.
- 4 Low-Voltage Wireway:** 2" deep .063 aluminum with MAP paint finish.
- 5 Installation:** Mount letters 1" from backer panel using 1" aluminum spacers with MAP painted finish. Attach display flush to wall surface using 1/2" dia. expandable fasteners.
- 6 Electrical Power Supply:** Customer to provide one (1) 20amp, 120v sign circuit to the display.



Section View

Scale: 3/4" = 1'-0"



Example

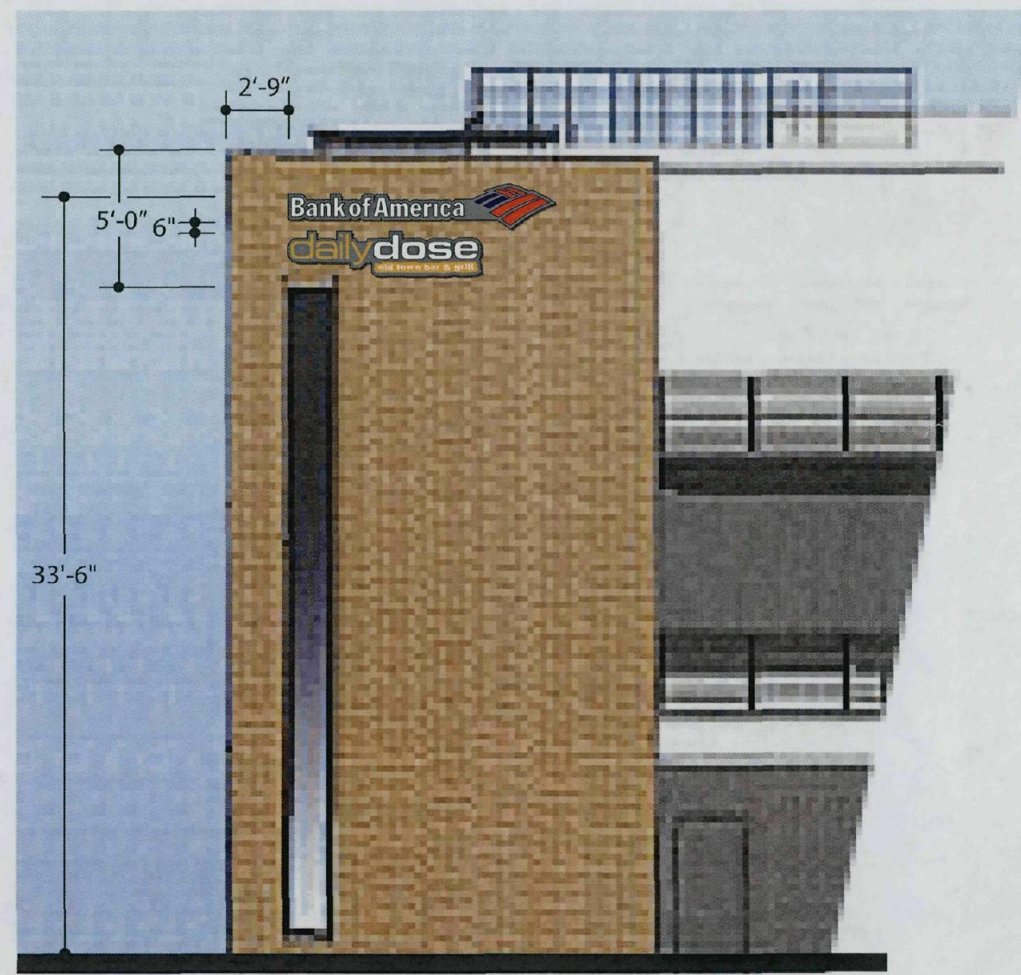
1a Elevation View
Scale: 3/4" = 1'-0"

Section View
Scale: 3/4" = 1'-0"

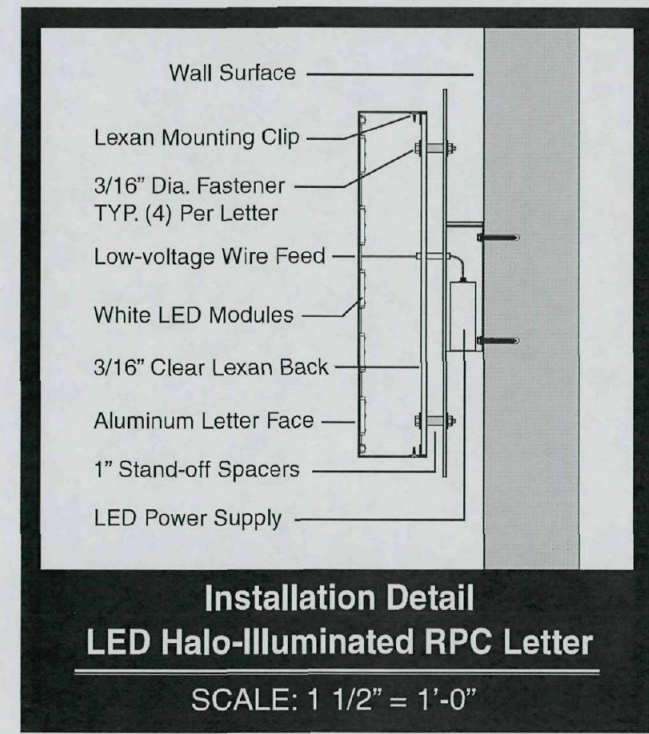
Tower Wall Display - Halo Illuminated Reverse Pan Channel Letter /Logo with Backer Panel

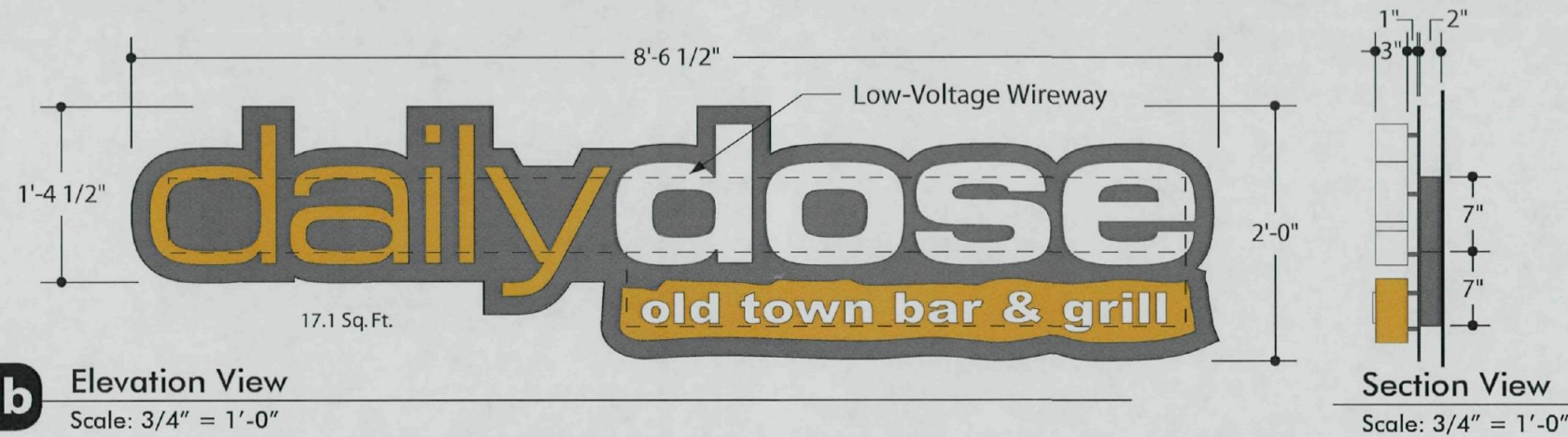
Manufacture one (1) LED illuminated reverse pan channel letter and logo display backed with 3/16" clear Lexan backs. Copy: 'Bank of America - Logo'.
Letter Material: .125 plate aluminum faces with 3" deep .063 welded aluminum returns. Paint Finish: Matthews MP 11477 White.
Illumination: ILT-2x2-W Quad LED modules wired to remote Low-Voltage UL power supplies located in rear wireway.

Backer Panel: .125 Plate aluminum with MAP painted finish.
Low-Voltage Wireway: 2" deep .063 aluminum with MAP paint finish.
Installation: Mount letters 1" from backer panel using 1" aluminum spacers with MAP painted finish. Attach display flush to wall surface using 1/2" dia. expandable fasteners.
 Customer to provide one (1) 20amp, 120v sign circuit to the display.



North Elevation
Scale: 1/8" = 1'-0"





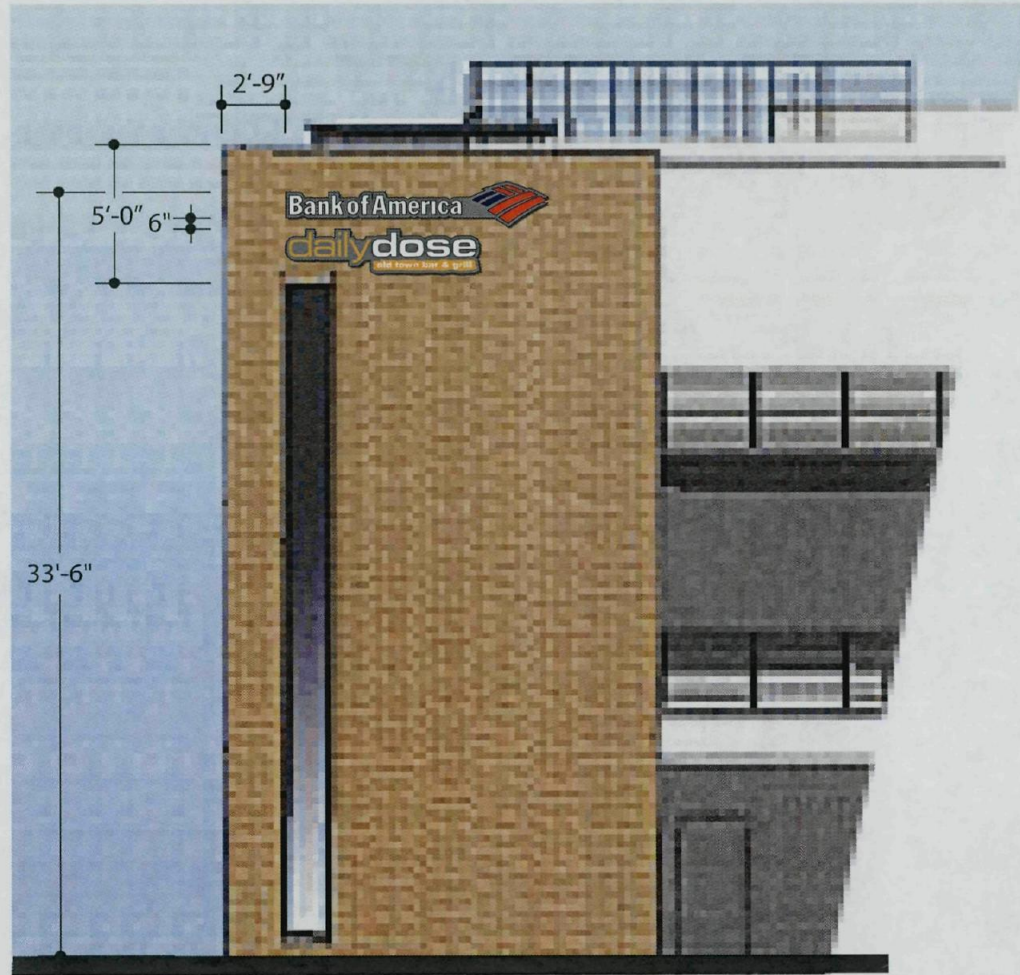
1b Elevation View
Scale: 3/4" = 1'-0"

Section View
Scale: 3/4" = 1'-0"

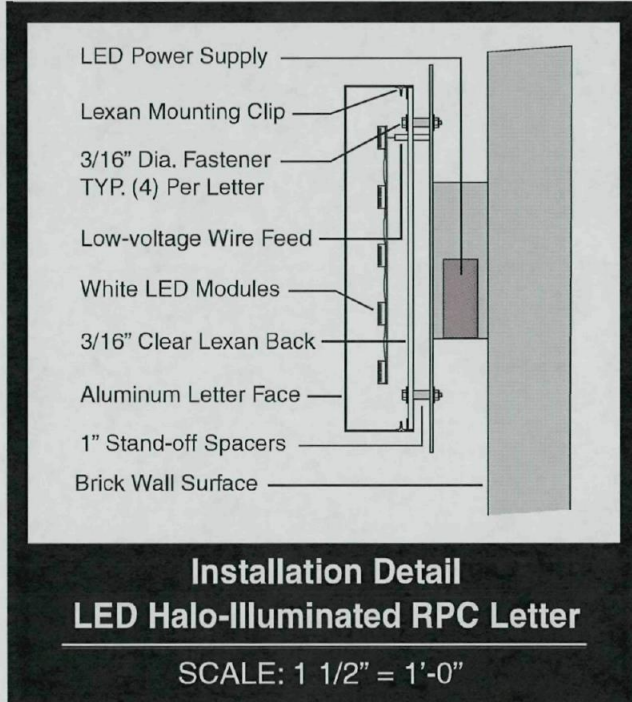
Tower Wall Display - Halo Illuminated Reverse Pan Channel Letter /Logo with Backer Panel

Manufacture one (1) LED illuminated reverse pan channel letter and logo display backed with 3/16" clear Lexan backs. Copy: 'dailydose - Logo'.
Letter Material: .125 plate aluminum faces with 3" deep .063 welded aluminum returns. Paint Finish: Matthews MP 11477 White.
Illumination: ILT-2x2-W Quad LED modules wired to remote Low-Voltage UL power supplies located in rear wireway.

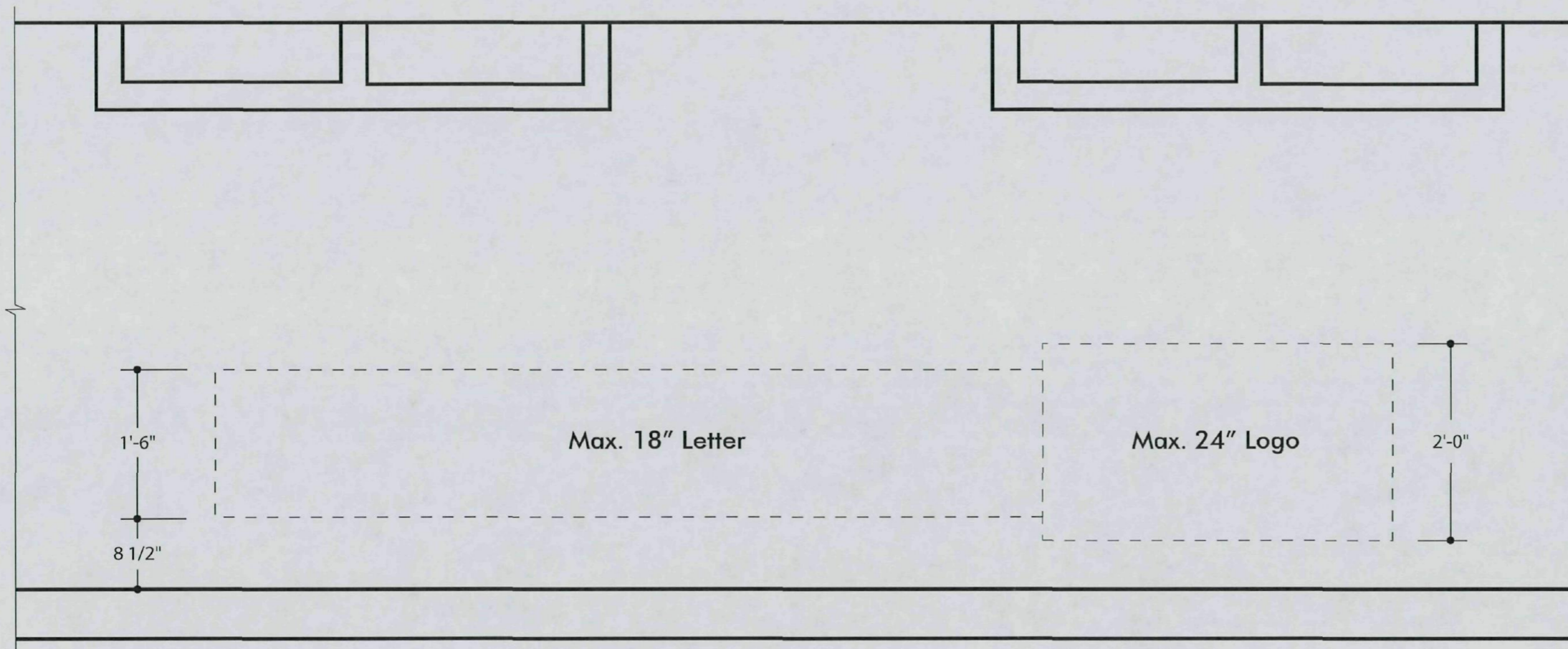
Backer Panel: .125 Plate aluminum with MAP painted finish.
Low-Voltage Wireway: 2" deep .063 aluminum with MAP paint finish.
Installation: Mount letters 1" from backer panel using 1" aluminum spacers with MAP painted finish. Attach display flush to wall surface using 1/2" dia. expandable fasteners.
 Customer to provide one (1) 20amp, 120v sign circuit to the display.



North Elevation
Scale: 1/8" = 1'-0"



Primary Sign Specifications



East Building Elevation

Scale: 3/4" = 1'-0"

Elevation

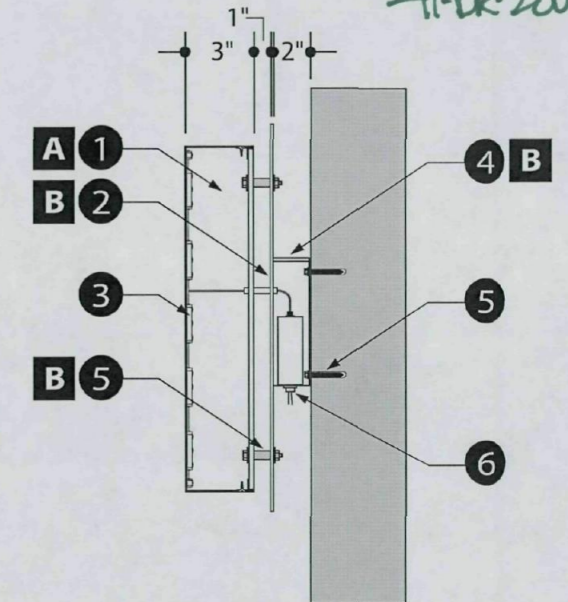
APPROVED

CITY OF SCOTTSDALE

INITIALS DATE

Chi *10/04/10*

41-DR-2007#3



Section View

Scale: 3/4" = 1'-0"

2 Primary Wall Sign - Halo Illuminated Reverse Pan Channel Letter /Logo with Backer Panel

- 1 Reverse Channel Letters:** Reverse pan channel letter/logo w/ paint finish.
Letter Face/Returns: .125 aluminum with 3" deep .063 aluminum returns.
Letter Backs: .150 waterjet-cut clear Lexan w/ perimeter alum. angle clips.

2 Backer Panel: .125 Plate aluminum with MAP paint finish.

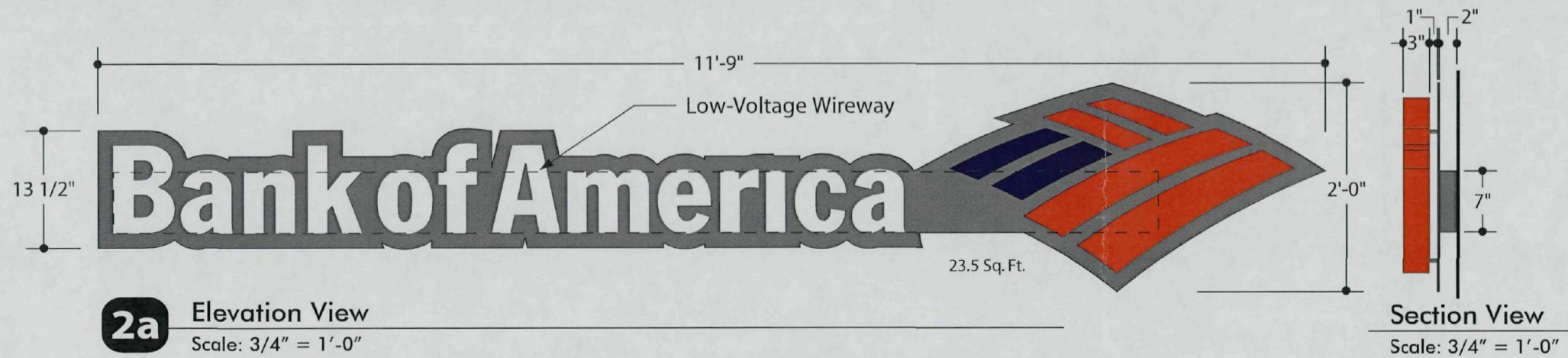
3 Illumination: ILT-2x2-W Quad LED modules wired to remote Low-Voltage UL power supplies located in rear wireway.
- 4 Low-Voltage Wireway:** 2" deep .063 aluminum with MAP paint finish.

5 Installation: Mount letters 1" from backer panel using 1" aluminum spacers with MAP painted finish. Attach display flush to wall surface using 1/2" dia. expandable fasteners.

6 Electrical Power Supply: Customer to provide one (1) 20amp, 120v sign circuit to the display.

Color Key

- A** Matthews - MP Custom Color TBD
- B** Matthews - MP 25843 Victorian Teal



2a Elevation View
Scale: 3/4" = 1'-0"

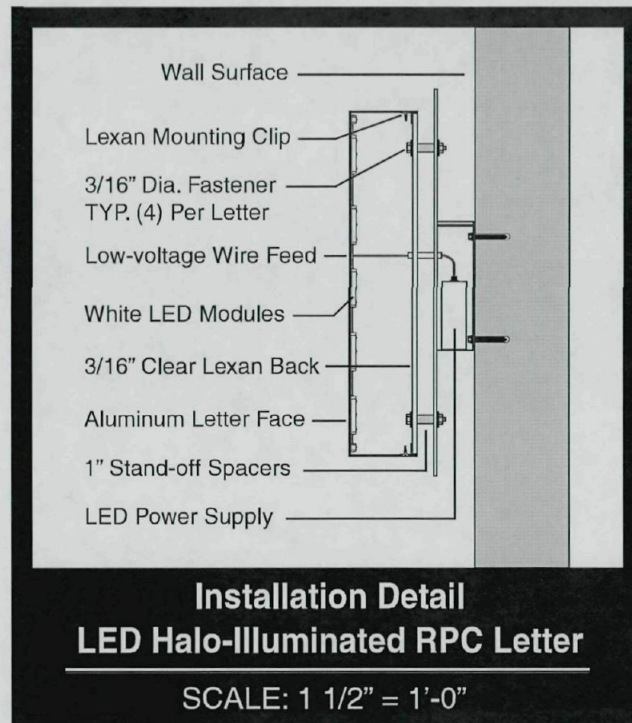
Section View
Scale: 3/4" = 1'-0"

Primary Tenant Display - Halo Illuminated Reverse Pan Channel Letter /Logo with Backer Panel

Manufacture one (1) LED illuminated reverse pan channel letter and logo display backed with 3/16" clear Lexan backs. Copy: 'Bank of America - Logo'.
Letter Material: .125 plate aluminum faces with 3" deep .063 welded aluminum returns. Paint Finish: Matthews MP 11477 White.
Illumination: ILT-2x2-W Quad LED modules wired to remote Low-Voltage UL power supplies located in rear wireway.

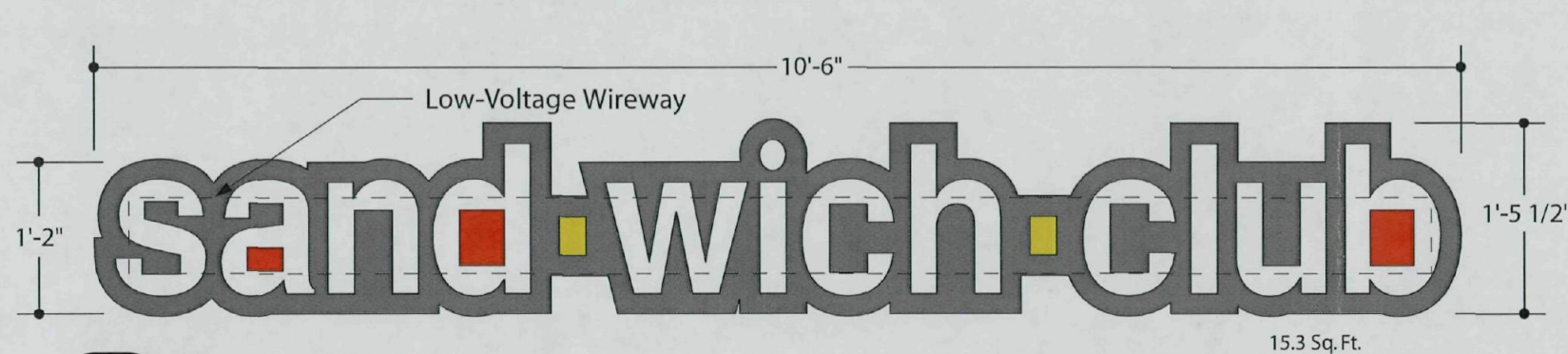
Backer Panel: .125 Plate aluminum with MAP painted finish.
Low-Voltage Wireway: 2" deep .063 aluminum with MAP paint finish.
Installation: Mount letters 1" from backer panel using 1" aluminum spacers with MAP painted finish. Attach display flush to wall surface using 1/2" dia. expandable fasteners.
 Customer to provide one (1) 20amp, 120v sign circuit to the display.

Example

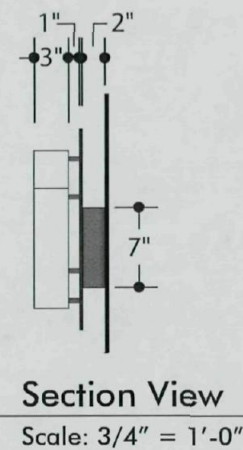


East Elevation - Scale: 1/8" = 1'-0"

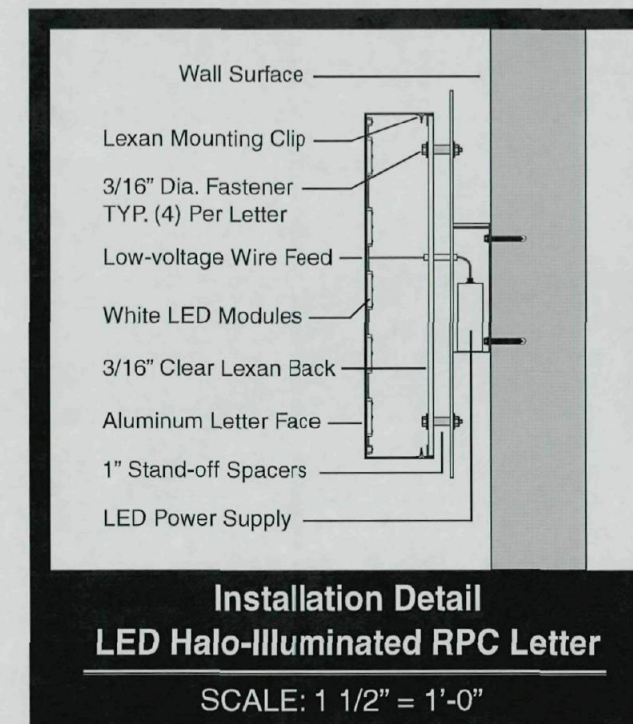
DESIGN NO. 06.22.10
 SHEET NUMBER .02a
 Date: 07/02/10 of
 Revisions:
 PROJECT: The 4020 Building
 4020 N. Scottsdale Rd., Suite 101
 Scottsdale, AZ 85251
 CUSTOMER:
 LANDLORD:
 FONT SELECTION: Custom
 This is an original unpublished drawing submitted solely for the project being planned. It is not to be reproduced in any manner or shown to persons outside your organization without the express written authorization of Precise Sign Company.
 3914 West Maitopka Street
 Phoenix, Arizona 85009
 602.278.2906
 fax 602.278.2523
 email: precise@precise.com
 P r e c i s e S i g n
 PCC 088713 L-38



2b Elevation View
Scale: 3/4" = 1'-0"



Section View
Scale: 3/4" = 1'-0"



Primary Tenant Display - Halo Illuminated Reverse Pan Channel Letter /Logo with Backer Panel

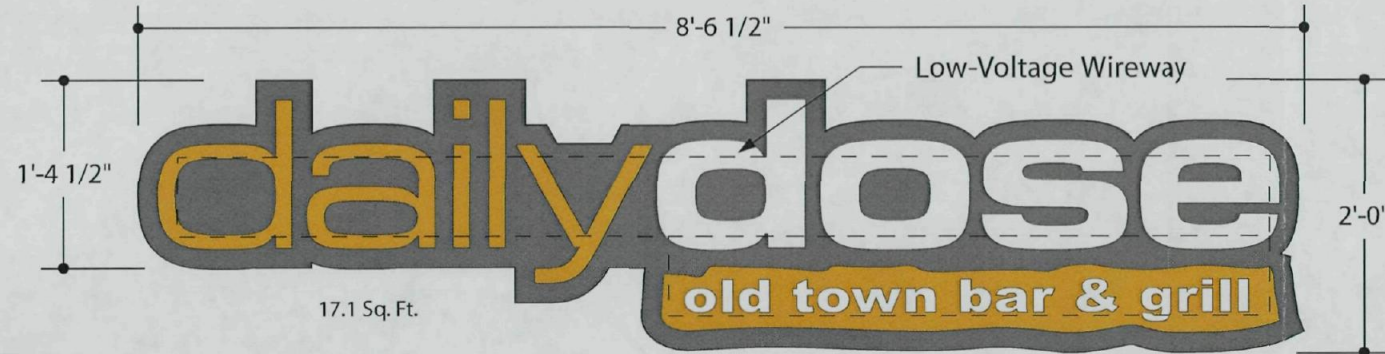
Manufacture one (1) LED illuminated reverse pan channel letter and logo display backed with 3/16" clear Lexan backs. Copy: 'Bank of America - Logo'.
Letter Material: .125 plate aluminum faces with 3" deep .063 welded aluminum returns. Paint Finish: Matthews MP 11477 White.
Illumination: ILT-2x2-W Quad LED modules wired to remote Low-Voltage UL power supplies located in rear wireway.

Backer Panel: .125 Plate aluminum with MAP painted finish.
Low-Voltage Wireway: 2" deep .063 aluminum with MAP paint finish.
Installation: Mount letters 1" from backer panel using 1" aluminum spacers with MAP painted finish. Attach display flush to wall surface using 1/2" dia. expandable fasteners.
 Customer to provide one (1) 20amp, 120v sign circuit to the display.



East Elevation - Scale: 1/8" = 1'-0"

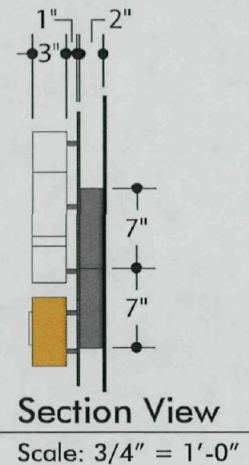
DESIGN NO. 08.04.10
 SHEET NUMBER .02b
 Date: 07/02/10
 Revisions:
 PROJECT: The 4020 Building
 4020 N. Scottsdale Rd., Suite 101
 Scottsdale, AZ 85251
 CUSTOMER:
 LANDLORD:
 FONT SELECTION: Custom
 This is an original unpublished drawing submitted solely for the project being planned. It is not to be reproduced in any manner or shown to persons outside your organization without the express written authorization of Precise Sign Company.
 3914 West Malibu Street
 Phoenix, Arizona 85009
 602.278.2906
 fax 602.278.2323
 email: precise@precise.com
 P r e c i s e S i g n
 P
 PDC 088713 L-38



2c

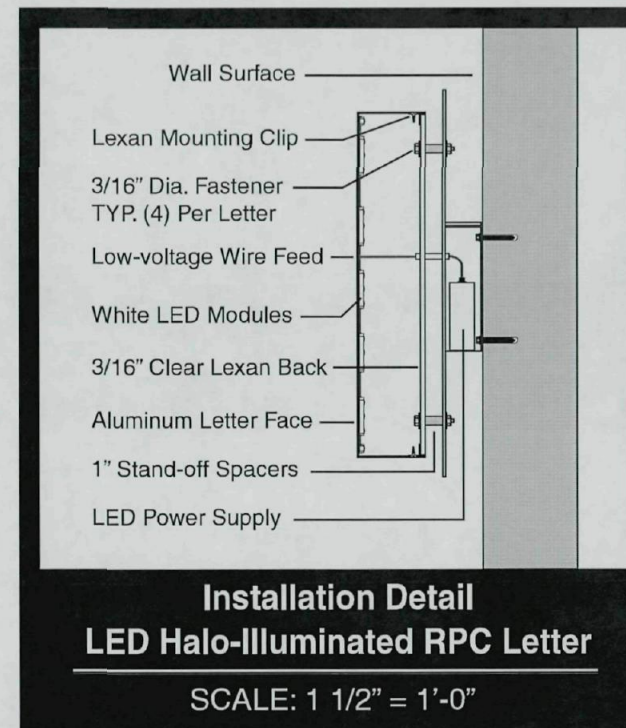
Elevation View

Scale: 3/4" = 1'-0"



Section View

Scale: 3/4" = 1'-0"



Primary Tenant Display - Halo Illuminated Reverse Pan Channel Letter /Logo with Backer Panel

Manufacture one (1) LED illuminated reverse pan channel letter and logo display backed with 3/16" clear Lexan backs. Copy: 'dailydose - Logo'.

Letter Material: .125 plate aluminum faces with 3" deep .063 welded aluminum returns. Paint Finish: Matthews MP 11477 White.

Illumination: ILT-2x2-W Quad LED modules wired to remote Low-Voltage UL power supplies located in rear wireway.

Backer Panel: .125 Plate aluminum with MAP painted finish.

Low-Voltage Wireway: 2" deep .063 aluminum with MAP paint finish.

Installation: Mount letters 1" from backer panel using 1" aluminum spacers with MAP painted finish. Attach display flush to wall surface using 1/2" dia. expandable fasteners.

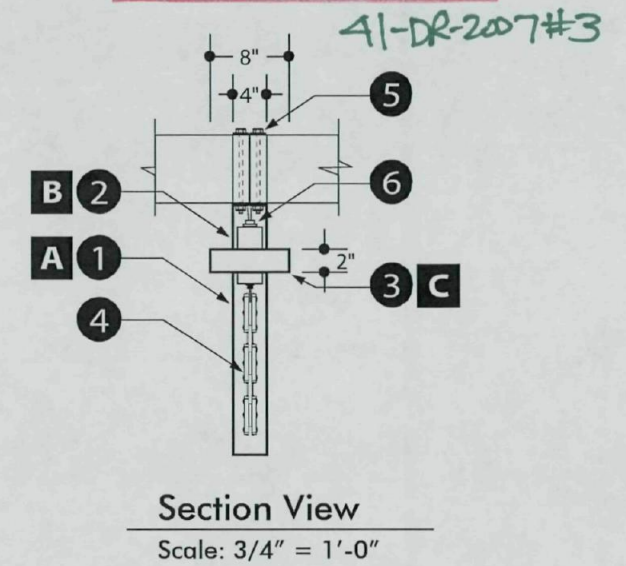
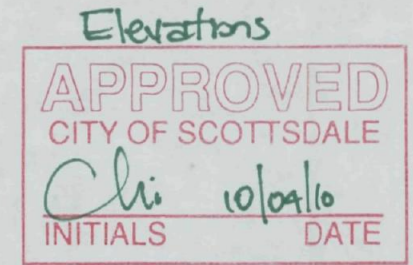
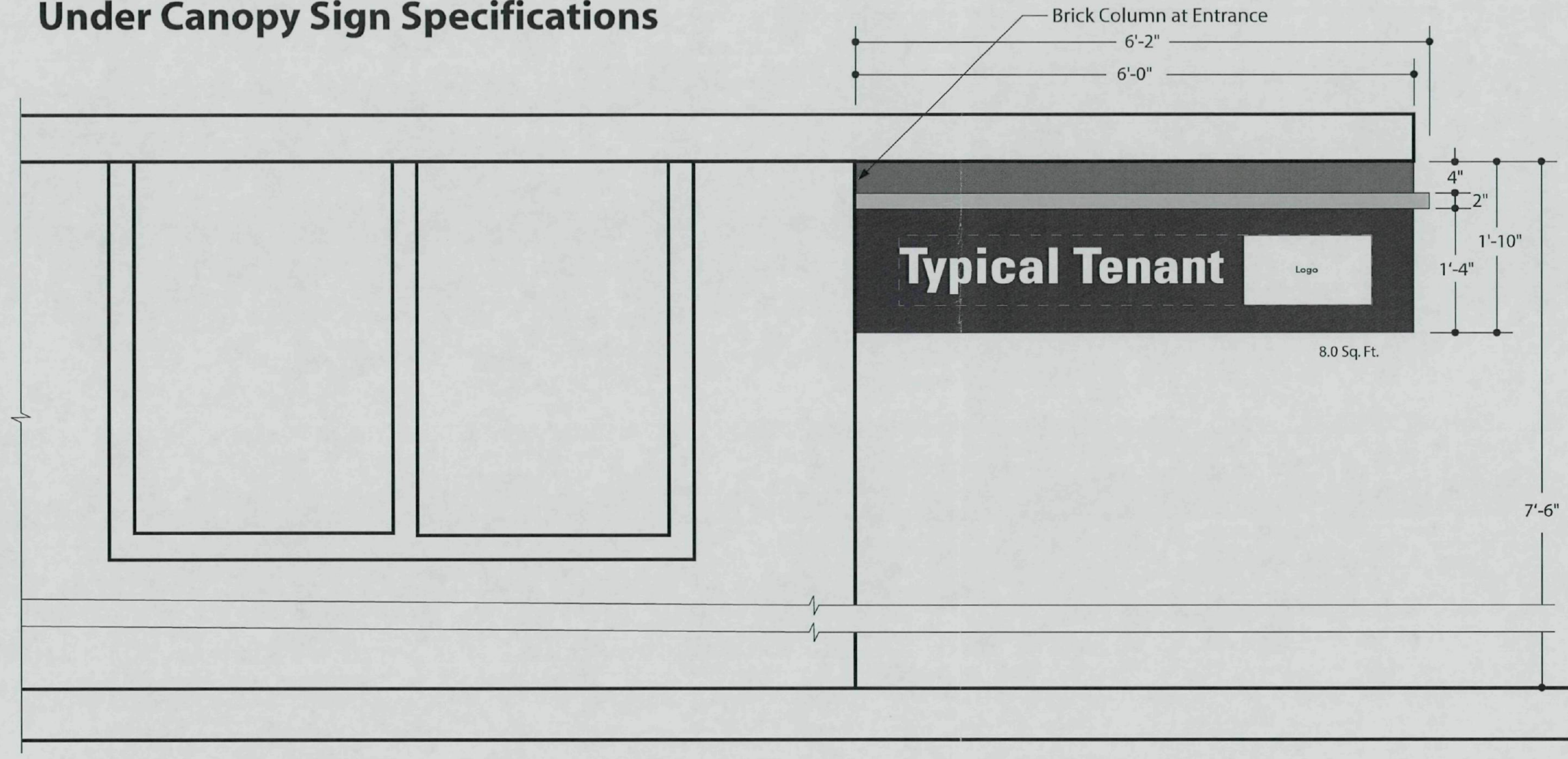
Customer to provide one (1) 20amp, 120v sign circuit to the display.



East Elevation - Scale: 1/8" = 1'-0"

DESIGN NO. 08.04.10
SHEET NUMBER .02c
Date: 07/02/10 of
Revisions:
PROJECT: The 4020 Building
4020 N. Scottsdale Rd., Suite 101
Scottsdale, AZ 85251
CUSTOMER:
LANDLORD:
FONT SELECTION: Custom
This is an original unpublished drawing submitted solely for the project being planned. It is not to be reproduced in any manner or form to persons outside your organization without the express written authorization of Precise Sign Company.
3914 West McDowell Street
Phoenix, Arizona 85009
602.278.2906
fax 602.278.2523
email: precise@precise.com
P r e c i s e S i g n
F O C 088713 L-58

Under Canopy Sign Specifications



South Building Elevation

Scale: 3/4" = 1'-0"

3

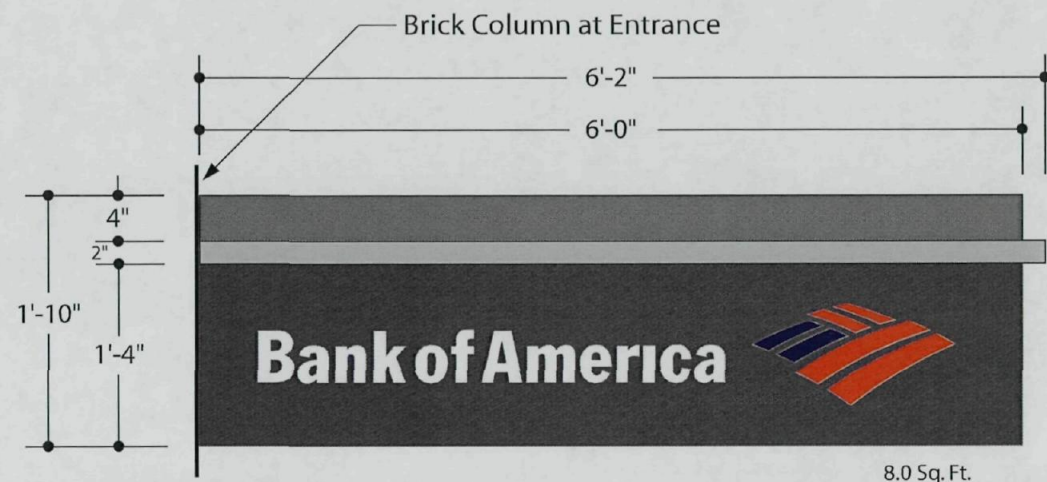
Under Canopy Sign - LED Illuminated D/F Channel Cabinet with Removable Tenant Panel

- 1 Cabinet:** D/F 3"x1 1/2"x3/16" wide channel with removable face panels.
Removable Face Panel: .125 aluminum with waterjet-cut graphics; paint finish.
Letter Backing: 3/16" Acrylic Plexiglas w/ 1/2" thick clear acrylic push-through Plexiglas. Overlay face of letter using 3M vinyl film per corporate colors.
- 2 Top Band:** .125 aluminum; paint finish.
- 3 Divider Bar:** 2" x 2" x 1/8" aluminum; paint finish.

- 4 Illumination:** ILT-2x2-W Quad LED modules wired to Low-Voltage UL power supplies located inside the cabinet.
- 5 Installation:** Mount display flush to brick column at entrance. Attach to under-side of the canopy frame using four (4) 3/8" dia. thru-bolt fasteners.
- 6 Electrical Power Supply:** Customer to provide one (1) 20amp, 120v sign circuit to the display.

Color Key

- A** Matthews - MP 26077 Dark Bronze
- B** Matthews - MP 25843 Victorian Teal
- C** Matthews - MP 30136 Brushed Aluminum



3a Elevation View
Scale: 3/4" = 1'-0"



Section View
Scale: 3/4" = 1'-0"

Under Canopy - Tenant Display

Manufacture two (2) 1'-4" x 6'-0" internally illuminated D/F under-canopy suspended sign display.

Mounting Collar: 4" x 6'-0" .125 removable panel with internal aluminum frame. Paint MAP - To match the building.

Divider Bar: 2" x 2" x 3/6" aluminum frame. Paint MAP - MP 30136 Brushed Aluminum.

Tenant Panel: 1'-4" x 6'-0" .125 removable face panel with internal aluminum frame. Paint MAP - MP 26077 Dark Bronze. Waterjet-cut graphics and back with 1/2" thick Clear acrylic push-through Plexiglas. Overlay face of letter using 3M vinyl film to allow for corporate colors, letter styles and logos.

Illumination: White LED modules wired to Low-Voltage UL labeled power supplies located inside the cabinet.

Installation: Mount display flush to brick column at entrance. Attach to under-side of the canopy frame using four (4) 3/8" dia. thru-bolt fasteners.

Customer to provide one (1) 20amp, 120v sign circuit to the display.

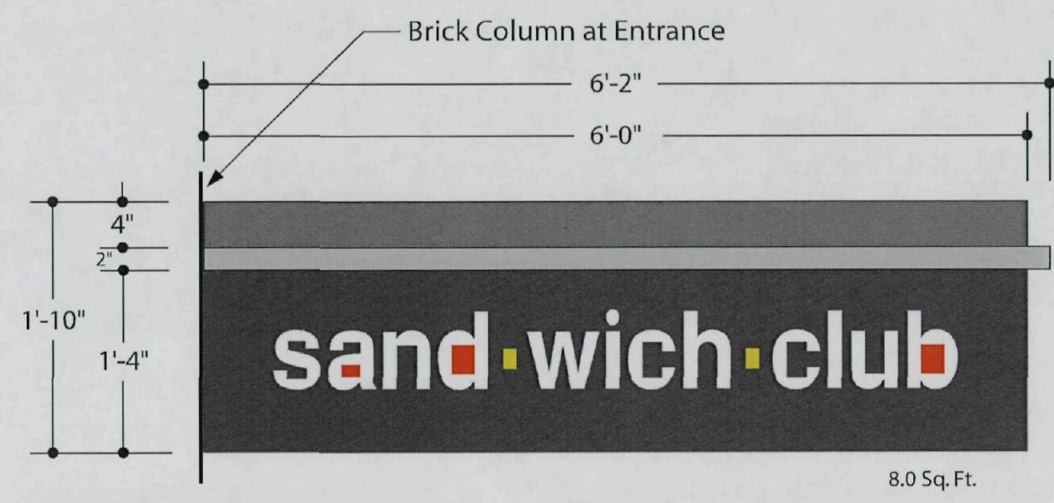


South Elevation
Scale: 3/32" = 1'-0"

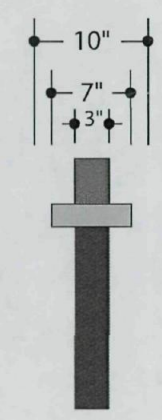


East Elevation
Scale: 3/32" = 1'-0"

Example



3b Elevation View
Scale: 3/4" = 1'-0"



Section View
Scale: 3/4" = 1'-0"

Under Canopy - Tenant Display

Manufacture two (2) 1'-4" x 6'-0" internally illuminated D/F under-canopy suspended sign display.

Mounting Collar: 4" x 6'-0" .125 removable panel with internal aluminum frame. Paint MAP - To match the building.

Divider Bar: 2" x 2" x 3/6" aluminum frame. Paint MAP - MP 30136 Brushed Aluminum.

Tenant Panel: 1'-4" x 6'-0" .125 removable face panel with internal aluminum frame. Paint MAP - MP 26077 Dark Bronze. Waterjet-cut graphics and back with 1/2" thick Clear acrylic push-through Plexiglas. Overlay face of letter using 3M vinyl film to allow for corporate colors, letter styles and logos.

Illumination: White LED modules wired to Low-Voltage UL labeled power supplies located inside the cabinet.

Installation: Mount display flush to brick column at entrance. Attach to under-side of the canopy frame using four (4) 3/8" dia. thru-bolt fasteners.

Customer to provide one (1) 20amp, 120v sign circuit to the display.

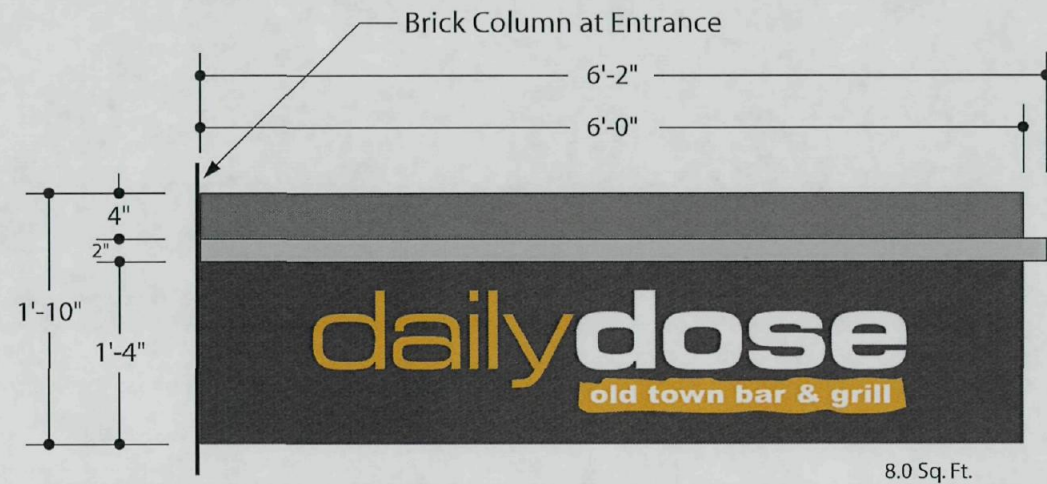


South Elevation
Scale: 3/32" = 1'-0"

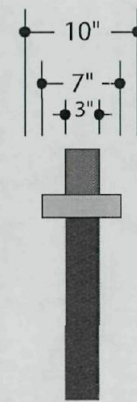


East Elevation
Scale: 3/32" = 1'-0"

Example



3c Elevation View
Scale: 3/4" = 1'-0"



Section View
Scale: 3/4" = 1'-0"

Under Canopy - Tenant Display

Manufacture two (2) 1'-4" x 6'-0" internally illuminated D/F under-canopy suspended sign display.

Mounting Collar: 4" x 6'-0" .125 removable panel with internal aluminum frame. Paint MAP - To match the building.

Divider Bar: 2" x 2" x 3/8" aluminum frame. Paint MAP - MP 30136 Brushed Aluminum.

Tenant Panel: 1'-4" x 6'-0" .125 removable face panel with internal aluminum frame. Paint MAP - MP 26077 Dark Bronze. Waterjet-cut graphics and back with 1/2" thick Clear acrylic push-through Plexiglas. Overlay face of letter using 3M vinyl film to allow for corporate colors, letter styles and logos.

Illumination: White LED modules wired to Low-Voltage UL labeled power supplies located inside the cabinet.

Installation: Mount display flush to brick column at entrance. Attach to under-side of the canopy frame using four (4) 3/8" dia. thru-bolt fasteners.

Customer to provide one (1) 20amp, 120v sign circuit to the display.



South Elevation
Scale: 3/32" = 1'-0"



East Elevation
Scale: 3/32" = 1'-0"

DESIGN NO. 06.22.10
SHEET NUMBER .03c

Date: 06/22/10
Revisions:

PROJECT: The 4020 Building
4020 N. Scottsdale Rd., Suite 101
Scottsdale, AZ 85251

CUSTOMER:

LANDLORD:

FONT SELECTION: Custom

This is an original unpublished drawing submitted solely for the project being planned. It is not to be reproduced in any manner or shown to persons outside your organization without the express written authorization of Precise Sign Company.
3914 West Maricopa Street
Phoenix, Arizona 85009
602.278.2906
fax 602.278.2523
email: precise@psigmc.com



P r e c i s e S i g n
FOC 08/13 L-38