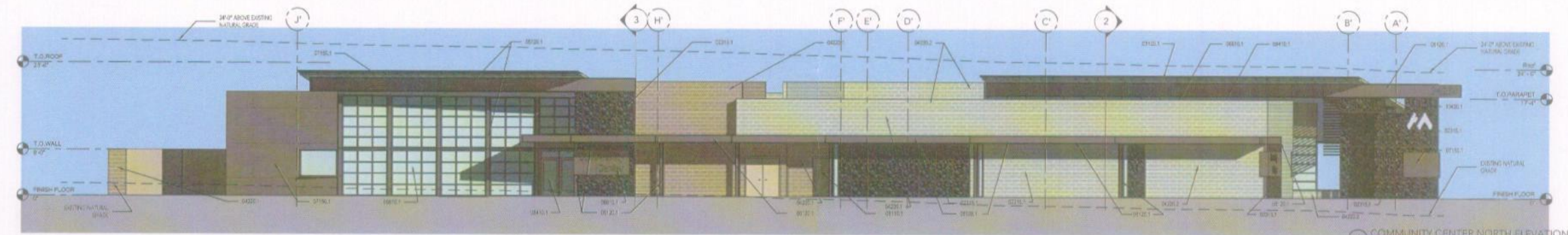


PROJECT TEAM
 ARCHITECT
 ARCHITEXTON
 1000 E. Main Street, Suite 100
 Bismarck, ND 58102
 VALLEY OF THE SUN ARCHITECTS
 1000 E. Main Street, Suite 100
 Bismarck, ND 58102
 ENGINEER
 GARDNER & THEOBALD ASSOCIATES, P.C.
 1000 E. Main Street, Suite 100
 Bismarck, ND 58102
 CONTRACTOR
 BROWN & CALDWELL
 1000 E. Main Street, Suite 100
 Bismarck, ND 58102
 INTERIOR ARCHITECT
 INTERIOR ARCHITECTURE
 1000 E. Main Street, Suite 100
 Bismarck, ND 58102
 THE ARCHITECTURE PARTNERSHIP
 1000 E. Main Street, Suite 100
 Bismarck, ND 58102

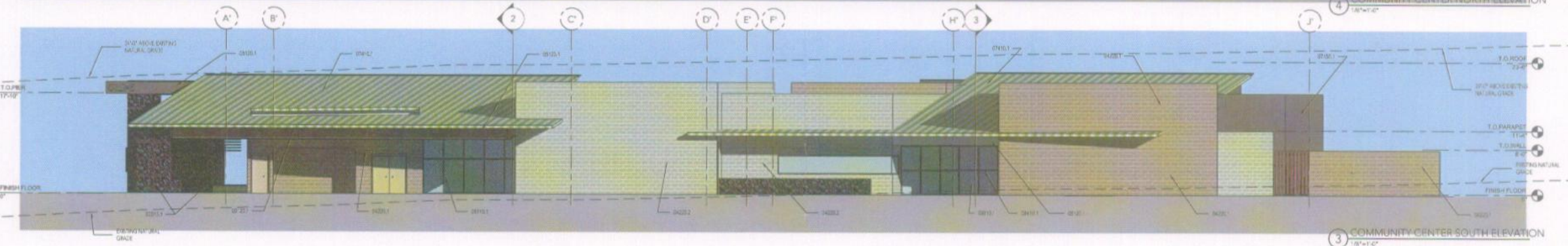
DESERT FOOTHILLS YMCA
 COMMUNITY CENTER & Paradise Valley
 Community College North at Black Mountain

PRE-APPLICATION # 542-PA-2006

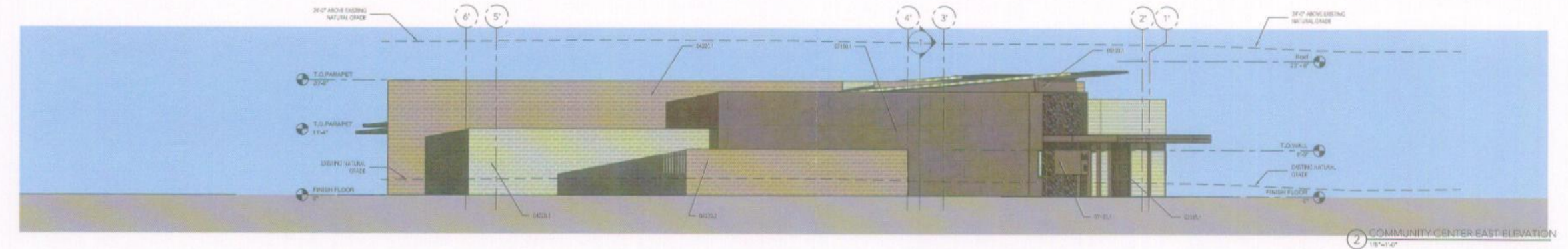
00122
EE.02
 COMM. CENTER
 EXT. ELEVATIONS
 REVISED



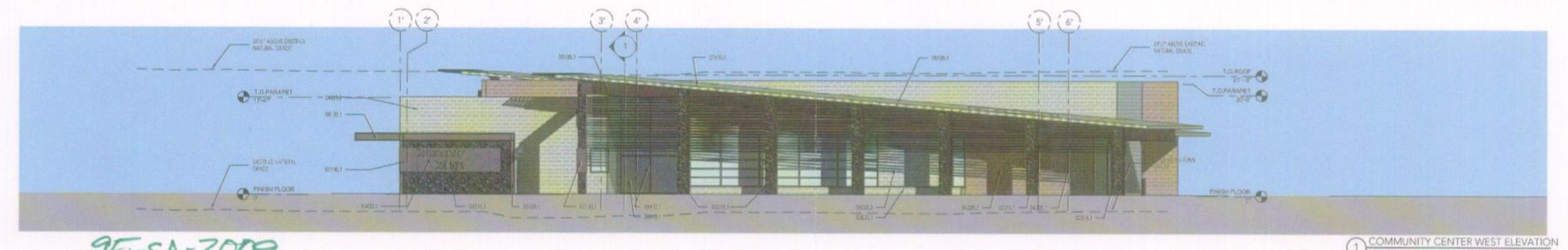
4 COMMUNITY CENTER NORTH ELEVATION
 1/8"=1'-0"



3 COMMUNITY CENTER SOUTH ELEVATION
 1/8"=1'-0"



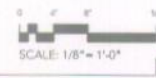
2 COMMUNITY CENTER EAST ELEVATION
 1/8"=1'-0"



1 COMMUNITY CENTER WEST ELEVATION
 1/8"=1'-0"

- 00101 BLACK RIVER ROCK GARNET
- 00102 1" CONCRETE TOPPING
- 00103 DOWN EXPOSED "RUSTIC WOOD" GROUND
- 00104 STAIN EDWARDS "ELEMENTAL" GROUND
- 00105 STEEL WITH NATURAL PATINA
- 00106 STEEL PANELS WITH NATURAL PATINA
- 00107 METAL ROOF
- 00108 YELLOW METAL DOOR AND FRAME - TO MATCH ADJACENT
- 00109 ARCADE "SMOKE BRICK" STOREFRONT
- 00110 1/2" LOWE INSULATED GLASS
- 00111 BALANCED STEEL SHIMANE

95-SA-2009
APPROVED
Joseph Hill 3-30-2009
 DATE
 *SEE STAFF APPROVAL LETTER FOR STIPULATIONS.

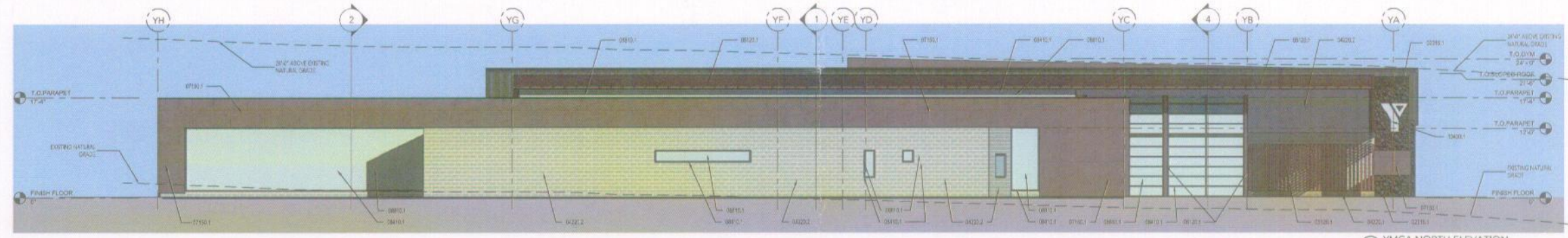


PROJECT TEAM
ARCHITECT:
VALLEY OF THE SUN ARCHITECTS
DESIGNER:
DAVID PARKS AND ASSOCIATES, INC.
GENERAL CONTRACTOR:
THE WOODS GROUP PARTNERSHIP

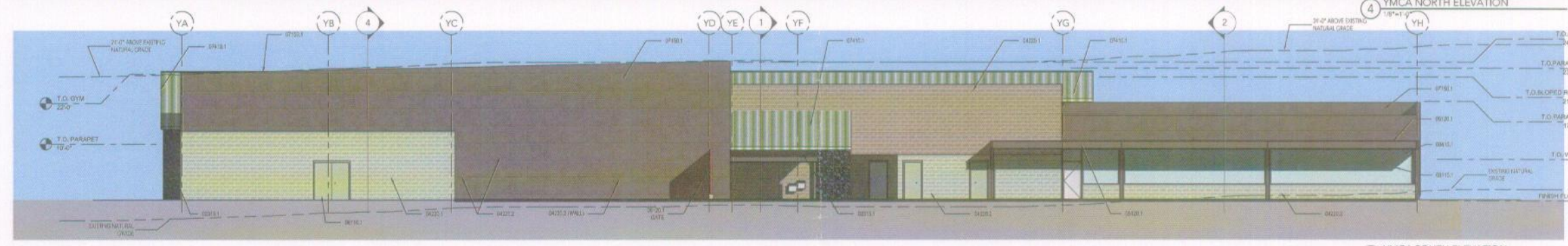
DESERT FOOTHILLS YMCA
COMMUNITY CENTER & Paradise Valley
Community College North at Black Mountain

PRE-APPLICATION # 542-PA-2006

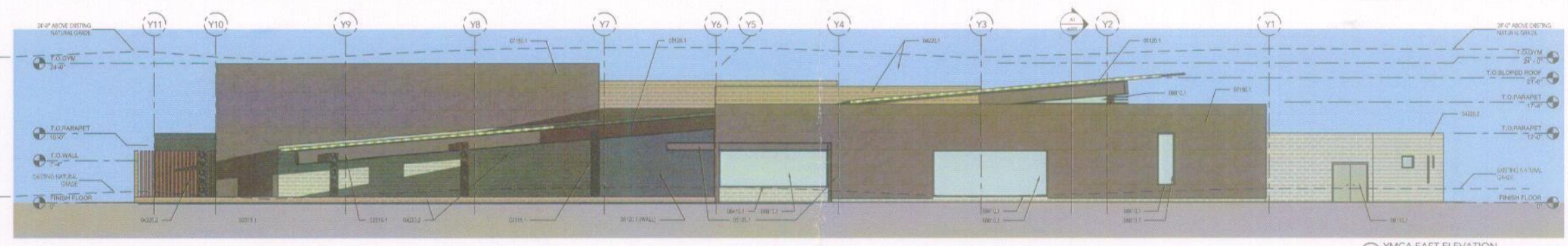
EE.01
YMCA EXTERIOR ELEVATIONS
REVISED



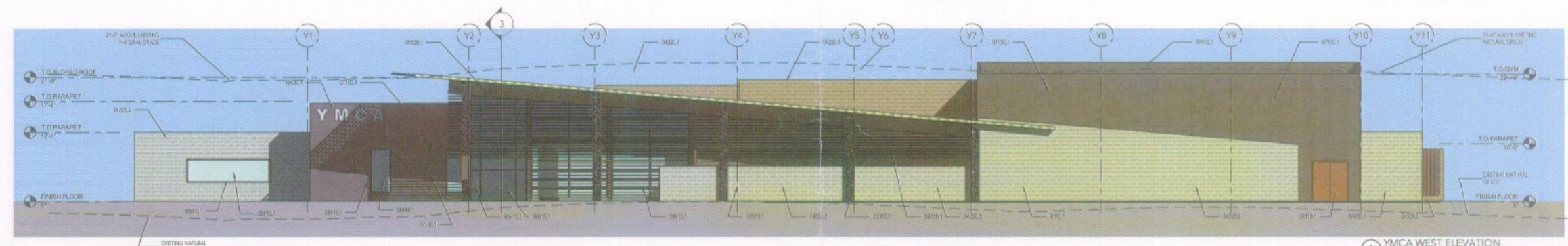
4 YMCA NORTH ELEVATION
1/8"=1'-0"



3 YMCA SOUTH ELEVATION
1/8"=1'-0"



2 YMCA EAST ELEVATION
1/8"=1'-0"



1 YMCA WEST ELEVATION
1/8"=1'-0"

95-SA-2009
APPROVED

Joseph L. Williams 3-30-2009
DATE

*SEE STAFF APPROVAL LETTER FOR STIPULATIONS.

- 02215.1 BLACK RIVER ROCK GARDEN
- 03350.1 2" CONCRETE TOPPING
- 04225.1 CLARK EDWARDS TUSCAN MOSAIC CERAMIC
- 04225.2 CLARK EDWARDS ELEGANTIC OREAN CERAMIC
- 05201.1 STEEL WITH NATURAL PATINA
- 07101.1 STEEL PANELS WITH NATURAL PATINA
- 08101.1 METAL ROOF
- 08110.1 HOLLOW METAL DOOR AND FRAME - TO MATCH ADJACENT
- 08410.1 ARCADIA DARK BRONZE STOREFRONT
- 08410.2 1/4" LOWE INSULATED GLASS
- 08430.1 GLAZERED STEEL SIGNAGE

