

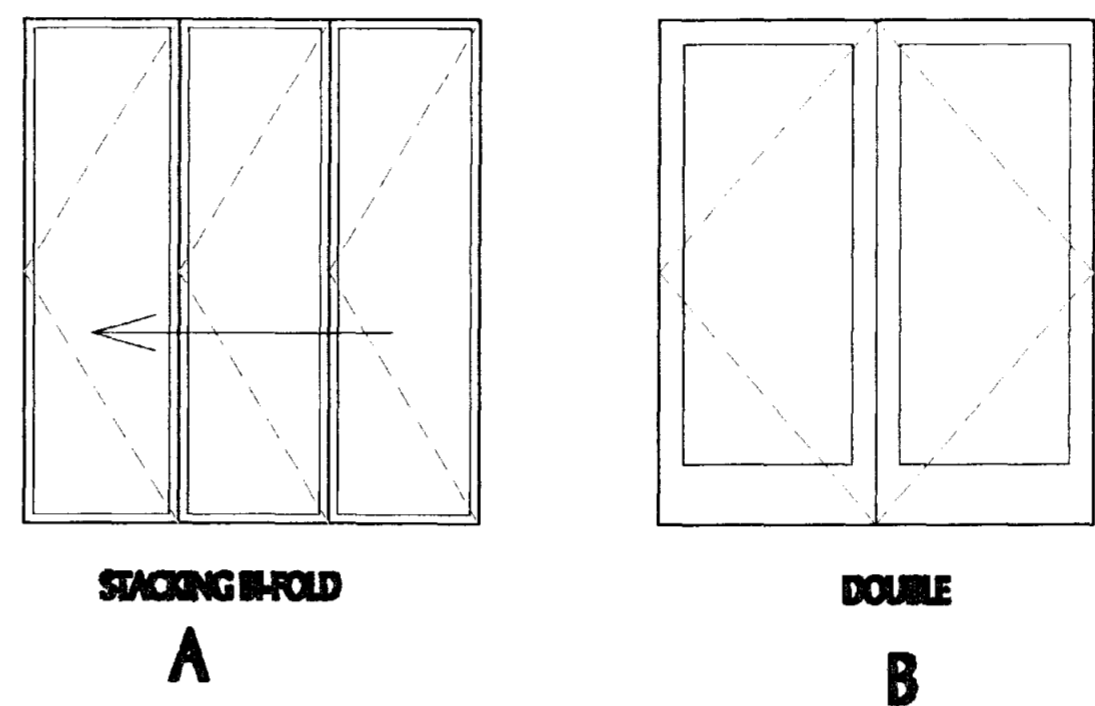
ROOM FINISH SCHEDULE										
ROOM #	ROOM NAME	BASE	FLOOR	NORTH WALL	SOUTH WALL	EAST WALL	WEST WALL	CEILING	WOOD TRIM	NOTES
129	GAZEBO	B-2	CPT-1	P-14	P-14	P-14	P-14	P-4	N/A	
133	LINK	B-4	T-1, T-2	P-14	P-14	P-14	P-14	P-4	N/A	

DOOR SCHEDULE									
DOOR #	ROOM NAME	WIDTH	HEIGHT	ELEVATION	DOOR MATERIAL	LABEL	FRAME MATERIAL	HARDWARE SET	NOTES
129a	GAZEBO	6'-8"	7'-0"	A	AL		AL	1	VERIFY OPENING IN FIELD
129b	GAZEBO	6'-8"	7'-0"	A	AL		AL	1	VERIFY OPENING IN FIELD
129c	GAZEBO	6'-8"	7'-0"	A	AL		AL	1	VERIFY OPENING IN FIELD
133a	LINK	6'-0"	7'-0"	B	AL		AL	2	
133b	LINK	6'-0"	7'-0"	B	AL		AL	2	

HARWARE SET 1
BY NANA WALL
MANUFACTURER OR EQUAL

HARDWARE SET 2
BUTTS
1 CARD READER LOCK
1 CLOSER
1 KICKPLATE
1 WALL STOP

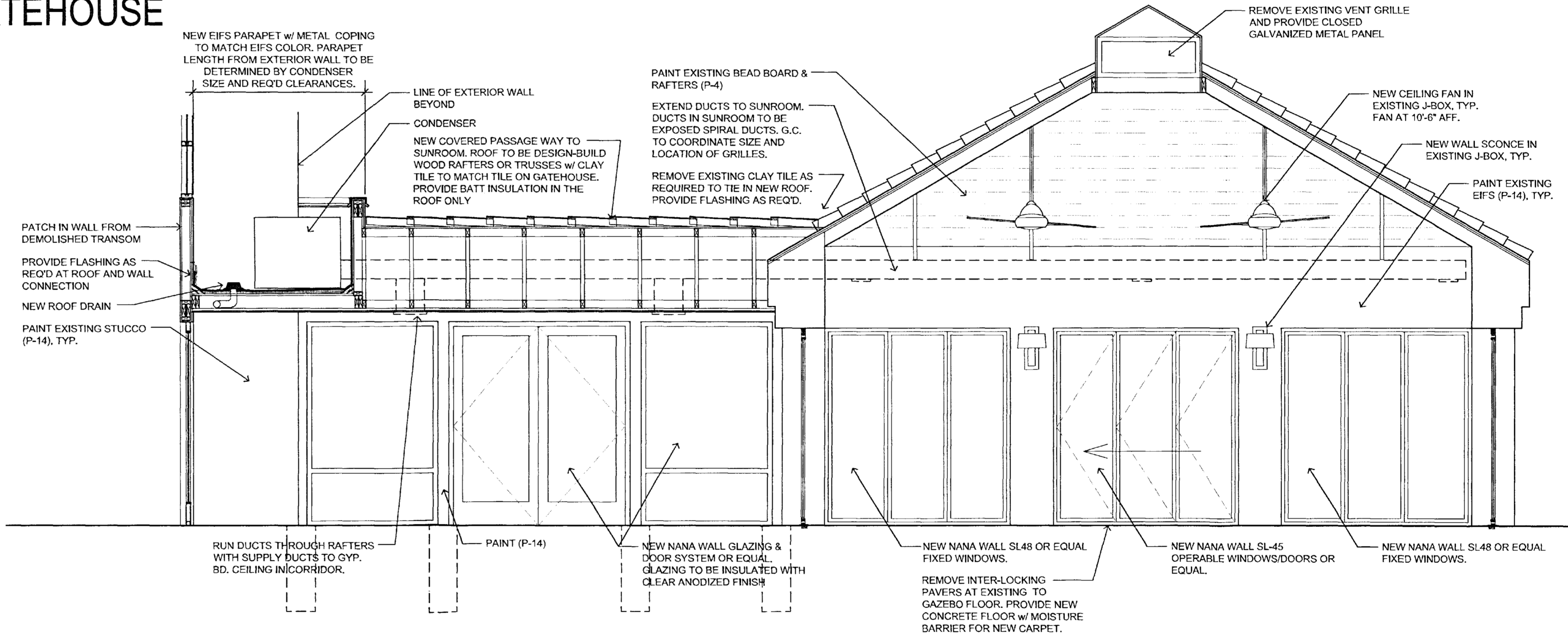
DOOR ELEVATIONS



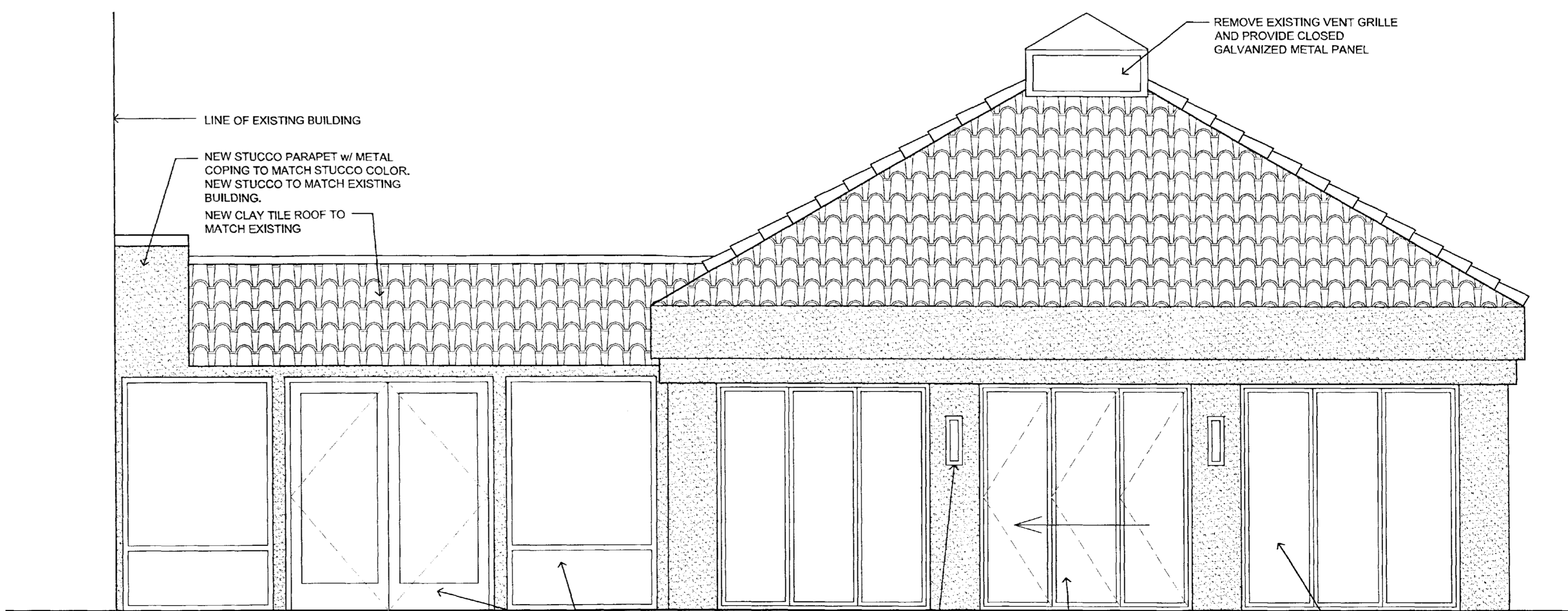
EXISTING
GAZEBO



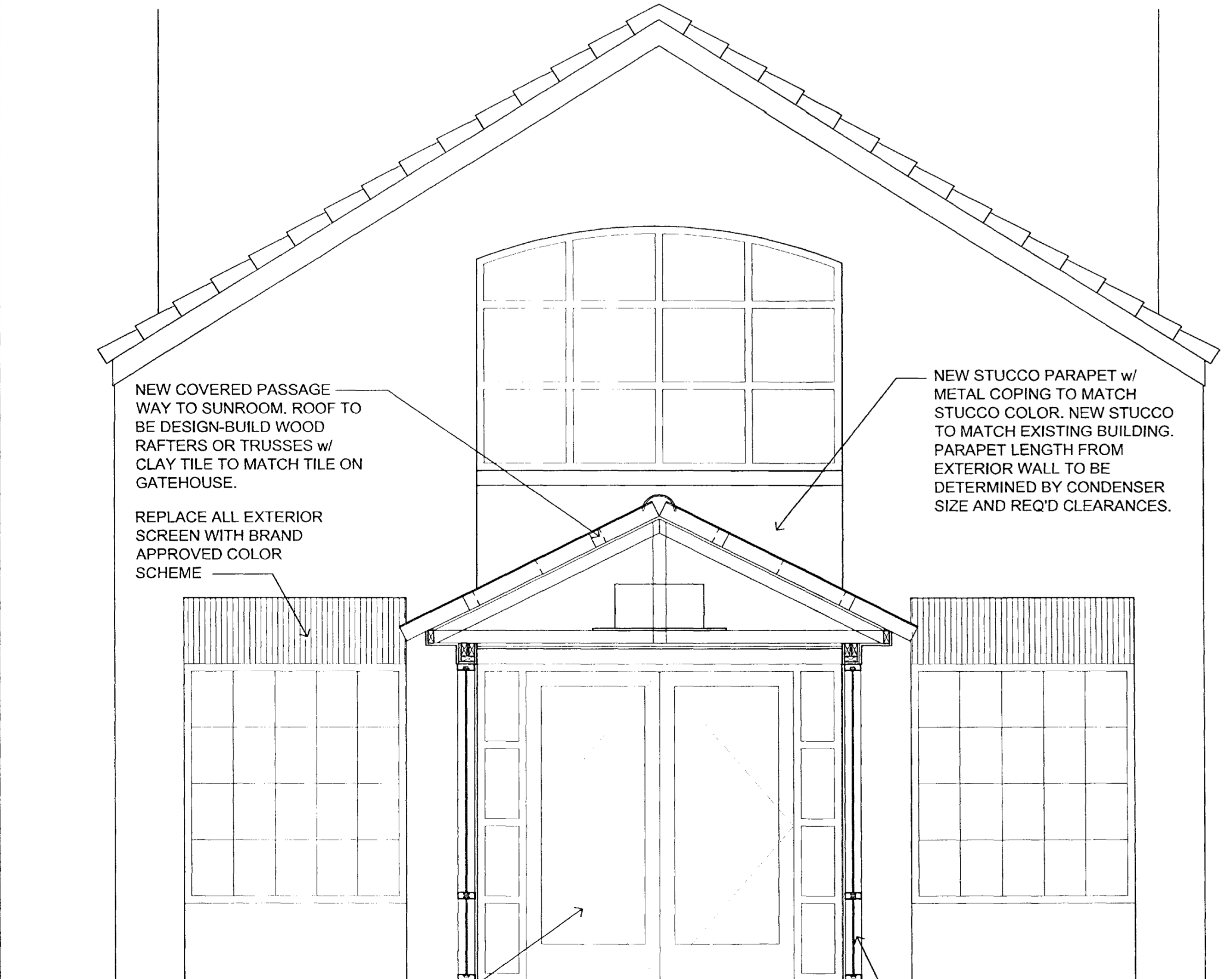
EXISTING
GATEHOUSE



2 | SECTION THRU LINK
3/8" = 1'-0"



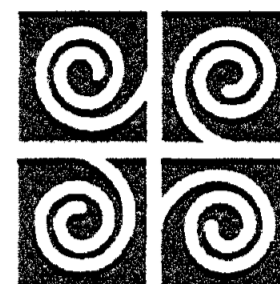
3 | ELEVATION
3/8" = 1'-0"



1 | SECTION THRU LINK
3/8" = 1'-0"

© NORR 2011

PROJECT



HYATT
SUMMERFIELD
SUITES™

4245 N. DRINKWATER BOULEVARD
SCOTTSDALE, ARIZONA

Alteration of Existing Gazebo
& Addition of New Link
Summerfield Suites Hotel

OWNER



Hersha Group

44 Hersha Drive
Harrisburg, PA 17102
p: 717 412 5500
f: 717 774 7383

ARCHITECT

NORR
ARCHITECTS PLANNERS

325 N. LaSalle St. | Suite 700 | Chicago, IL 60654
t 312.424.2400 | f 312.424.2424 | www.norr.com

CIVIL ENGINEER

STRUCTURAL ENGINEER

MEP ENGINEER

REVISIONS / SUBMITTALS

NO.	DATE	ISSUE
1	07-18-11	STAFF APPROVAL APPLICATION

SHEET INFORMATION

SHEET TITLE

SECTIONS & SCHEDULES

PROFESSIONAL STAMP SHEET NUMBER

A3.1

PAGE NUMBER

X OF Y