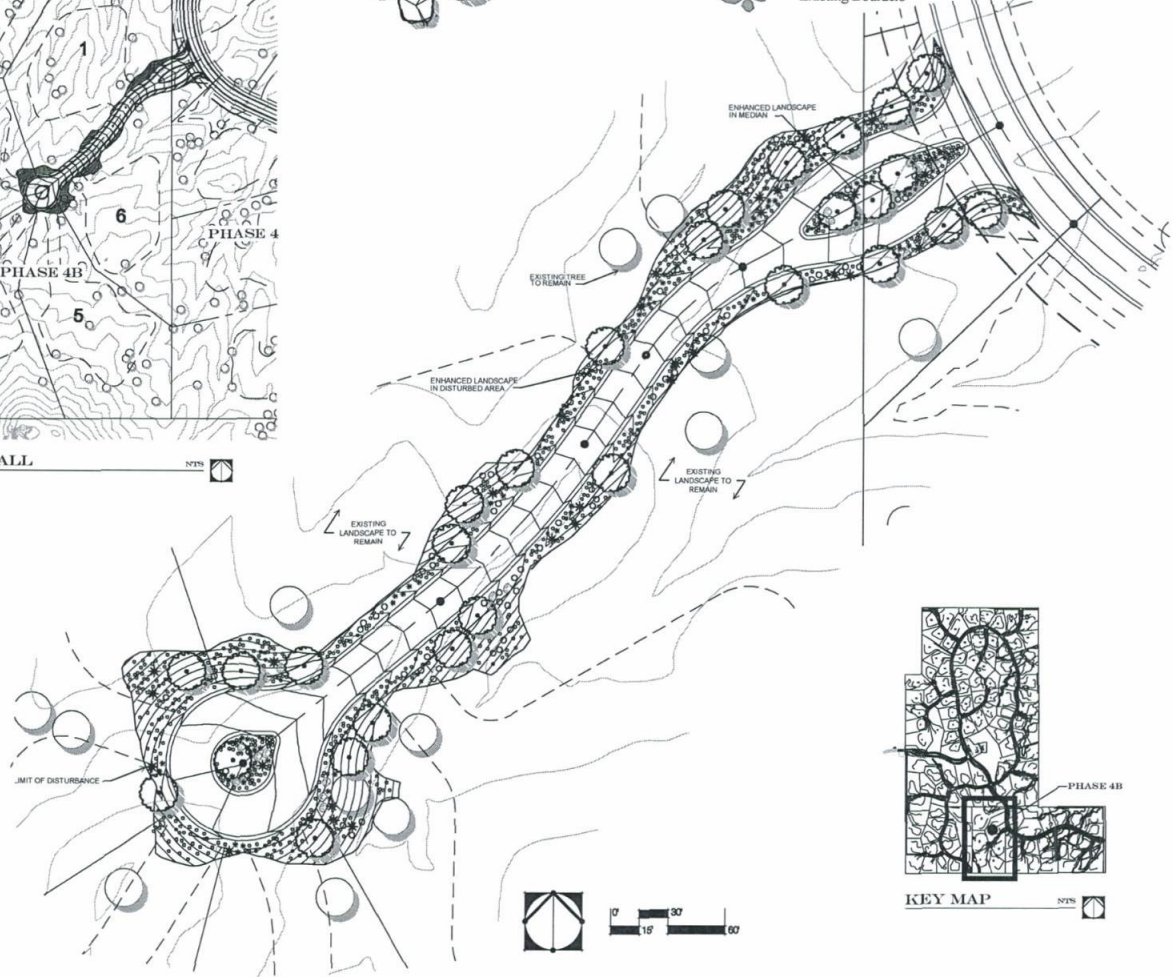


PHASE 4B OVERALL

LANDSCAPE LEGEND

- Existing Tree / Veg. to remain
- New Understory Vegetation (shrubs / cacti / grasses / etc.)
- New Landscape / Enhanced Veg.
- New Boulders (Large specimen type to blend with existing)
- Existing Boulders



KEY MAP

The following plant palette has been adapted from the City of Scottsdale's E.S.L.O. plant list. (All species shown below are in conformance with E.S.L.O. standards)

TREES

- Whitehorn Acacia
- Catclaw Acacia
- Cross-titan Thorn
- Hackberry
- Blue Palo Verde
- Foothill Palo Verde
- Desert Willow
- One-seeded Juniper
- Ironwood
- Cottonwood
- Arizona Mesquite
- Sarab Oak
- Sage Sumac
- Arizona Rosewood

SUCCULENTS / CACTI

- Saguaro
- Hedgehog Cactus
- Compass Barrel
- Barrel
- Fishhook Barrel
- Ocotillo
- Fishhook Cactus
- Cactus
- Staghorn Cholla
- Cholla
- Toddy Bear Cholla
- Engelmann's Prickly-pear
- Chainfruit Cholla
- Desert Christmas Cactus
- Night-Blooming Cereus
- Banana Yucca
- Sagepalm Yucca

SHRUBS / BUSHES

- Giant Bursage
- Triangle-leaf Bursage
- White Bursage
- Desert Honeyuckle
- Fourwing Salibush
- Quailbrush
- Desert Saltbush
- Red Barberry
- Fairy Duster
- Desert Shrub
- Desert Hackberry
- Hopbush
- Sagebrush
- Brittlebush
- Green Brittlebush
- Mormon Tea
- Turpentine Bush
- Flat-top Buckwheat
- Snakewood
- Desert Lavender
- Chuparosa
- Cresote Bush
- Deer Vetch
- Woolberry
- Arrow Weed
- Jojoba Bush
- Trixia
- Goldmeyer
- Greythorn

- Acacia constricta*
- Acacia greggii*
- Cercocarpus holocarpa*
- Celtis pallida*
- Cercidium floridanum*
- Cercidium microphyllum*
- Chilopsis linearis*
- Juniperus monosperma*
- Olneya tesota*
- Populus fremontii*
- Prosopis juliflora*
- Quercus turbinella*
- Rhus ovata*
- Yucca elata californica*

- Carnegia gigantea*
- Echinocereus engelmannii*
- Ferocactus cylindricus*
- Ferocactus wislizenii* Barrel
- Fouquieria splendens*
- Mammillaria microcarpa*
- Opuntia acanthocarpa*
- Opuntia bigelovii* Cholla
- Opuntia engelmannii*
- Opuntia jugoslavica*
- Opuntia leptocaulis*
- Panicum greggii*
- Tucca baccata*
- Tucca elata*

- Ambrosia ambrosioides*
- Ambrosia deltoidea*
- Ambrosia dumosa*
- Azorella thurberi*
- Atriplex canescens*
- Atriplex lentiformis*
- Atriplex polycarpa*
- Barbarea haematocarpa*
- Calliandra eriophylla*
- Cassia covillei*
- Celtis pallida*
- Dodonaea viscosa*
- Danara wrightii*
- Encelia farinosa*
- Encelia frutescens*
- Ephedra aspera*
- Ericameria laricina*
- Eriogonum fasciculatum*
- Gutierrezia sarothrae*
- Hypoxis emoryi*
- Jatropha californica*
- Larrea tridentata*
- Lonicera rigida*
- Lycium andersonii*
- Flourensia arida*
- Simmondsia chinensis*
- Trixia californica*
- Viguiera deltoidea*
- Ziziphium obtusifolia*

ANNUALS / PERENNIALS / VINES

- Abrus villosus*
- Amsinckia intermedia*
- Baileya multicalata*
- Cucurbita digitata*
- Dichelostemum pulchellum*
- Dysodia pentachaeta*
- Eriophyllum lanosum*
- Eschscholzia musciana*
- Gaillardia aristata*
- Gilia latifolia*
- Janusia gracilis*
- Lactuca chrysotoma*
- Lesquerella gordonii*
- upuna sparsiflora*
- Desert Lupine*
- Purple Aster*
- Blackfoot Daisy*
- Owl's Clover*
- Pennisetum parryi*
- Pennisetum pycnanthemum*
- Desert Bluebell*
- Scorpionweed*
- Cream Cape*
- Devil's Claw*
- Paper Flower*
- Indian Wheat*
- Desert Chicory*
- Desert Chia*
- Desert Globemallow*
- Desert Straw*

GRASSES

- Purple Threeawn*
- Needle grass*
- Sideoats grama*
- Curly mesquite*
- Fluffgrass*
- Aristida purpurea*
- Bouteloua orizabensis*
- Bouteloua curtipendula*
- Hilaria berlandieri*
- Eriogonum pulchellum*

The following plant palette is in addition to the above referenced list. The following species will be used in and around the developments clubhouse and connected common areas. (These areas will not be counted as irrigated NAGS)

TREES

- Casahuate*
- Desert Willow*
- Gregg Ash*
- Texas Ebony*
- Casahuate*
- Chilopsis linearis*
- Fraxinus greggii*
- Pithecolobium leucocarpum*

SUCCULENTS / CACTI

- Desert Milkweed*
- Agave*
- Golden Barrel*
- Giant Heperaloe*
- Senita*
- Organ Pipe Cactus*
- Anaclepis subulata*
- Agave Spicata*
- Echinocactus grusonii*
- Heperaloe funifera*
- Lephocercus schottii*
- Stenocereus thurberi*

SHRUBS / BUSHES

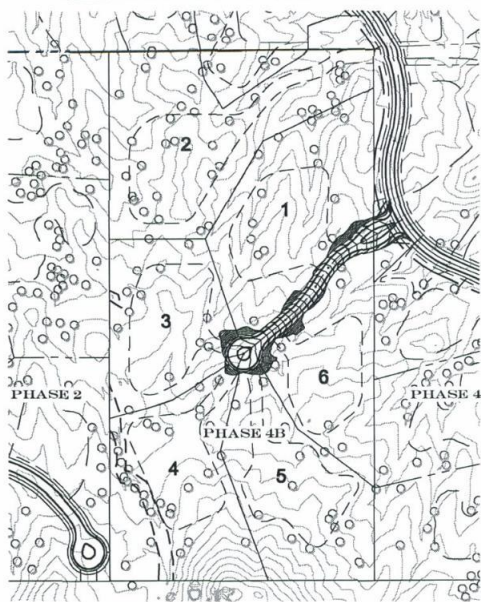
- Black Dalea*
- Sage*
- Baja Ruellia*
- Desert Ruellia*
- Autumn Sage*
- Dalea frutescens*
- Lanceophyllum species*
- Ruellia Brittoniana*
- Ruellia peninsularis*
- Salvia greggii*

ANNUALS / PERENNIALS / VINES

- Potted annual flowers*
- Angeltia Daisy*
- Yellow morning glory*
- By season*
- Hymenocallis acialis*
- Merrinia aurea*
- Nolina crumpeum*
- Hybrid bermuda lawn dactylon*
- (Tifway 419 or equal)*
- Cynodon dactylon*

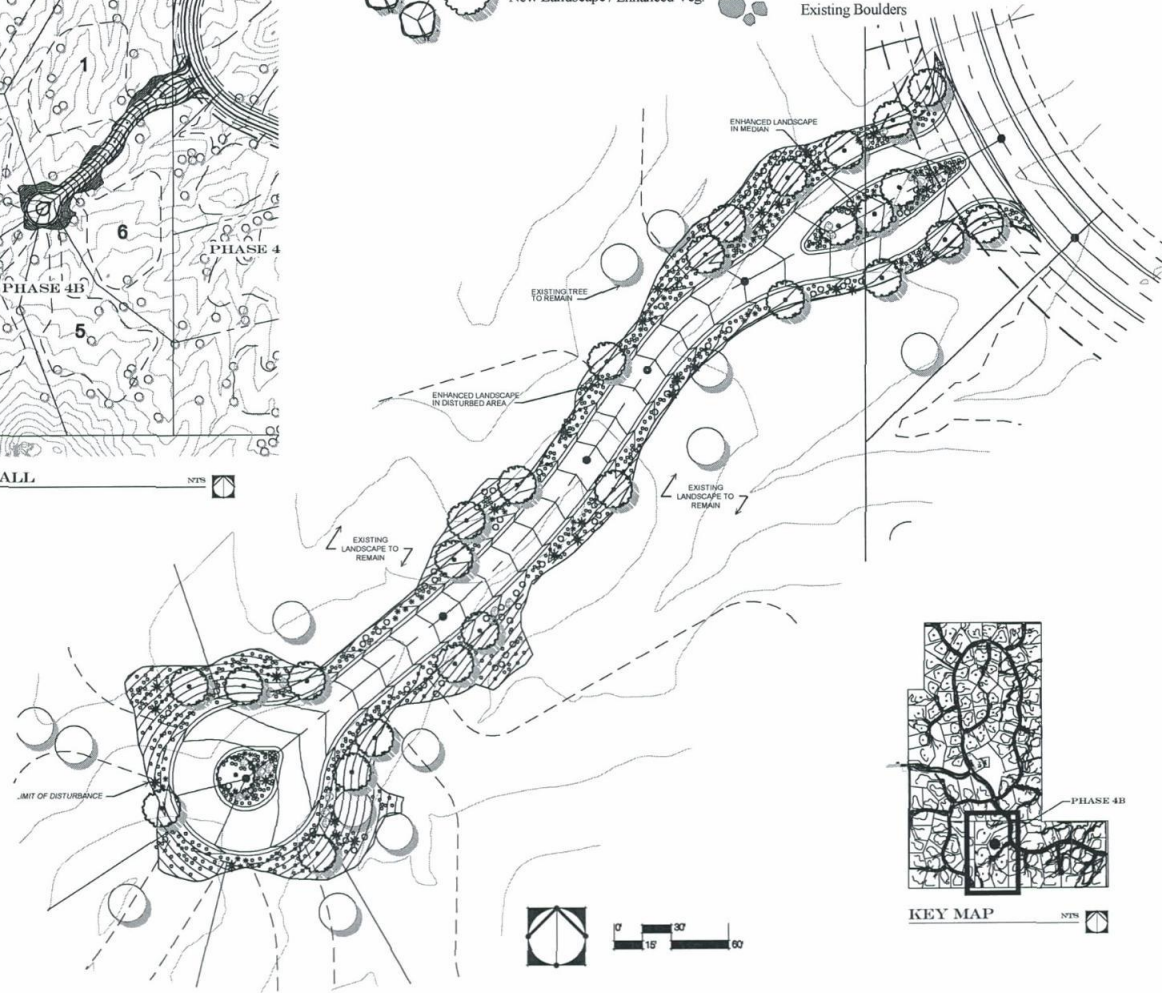
This list is intended as a guide and is subject to change. Any changes shall be approved by City staff as required.

2-PP-2008#2
1st: 4/22/11



LANDSCAPE LEGEND

- Existing Tree / Veg. to remain
- New Understory Vegetation (shrubs / cacti / grasses / etc.)
- New Landscape / Enhanced Veg.
- New Boulders (Large specimen type to blend with existing)
- Existing Boulders



The following plant palette has been adopted from the City of Scottsdale's E.S.L.O. plant list. (All species shown below are in conformance with E.S.L.O. standards)

- TREES**
- Whitehorn Acacia *Acacia constricta*
 - Catalaw Acacia *Acacia greggii*
 - Crucifixion Thorn *Canotia holocantha*
 - Hackberry *Celtis pallida*
 - Blue Palo Verde *Cercidium floridanum*
 - Foothill Palo Verde *Cercidium microphyllum*
 - Desert Willow *Chilopsis linearis*
 - One-seeded Juniper *Juniperus monosperma*
 - Ironwood *Olneya tesota*
 - Cottonwood *Populus fremontii*
 - Arizona Mesquite *Prosopis juliflora*
 - Scrub Oak *Quercus turbinella*
 - Sugar Sumac *Rhus ovata*
 - Arizona Rosewood *Vauquelinia californica*

- SUCCULENTS / CACTI**
- Saguaro *Carnegiea gigantea*
 - Hedgehog Cactus *Echinocactus engelmannii*
 - Compass Barrel *Ferocactus cylindraceus*
 - Barrel *Ferocactus wislizenii*
 - Fishhook Barrel *Ferocactus wislizenii*
 - Ocotillo *Fouquieria splendens*
 - Fishhook Cactus *Mammillaria microcarpa*
 - Cactus *Opuntia acanthocarpa*
 - Staghorn Cholla *Opuntia bigelovii*
 - Cholla *Opuntia engelmannii*
 - Toddy Bear Cholla *Opuntia engelmannii*
 - Engelmann's Prickly-pear *Opuntia ficifida*
 - Chinifruit Cholla *Opuntia leptocaulis*
 - Desert Christmas Cholla *Opuntia leptocaulis*
 - Night-Blooming Cereus *Peniocereus greggii*
 - Hanasa Yucca *Yucca baccata*
 - Sonitree Yucca *Yucca elata*

- SHRUBS / BUSHES**
- Giant Bursage *Ambrosia ambrosioides*
 - Triangle-leaf Bursage *Ambrosia deltoidea*
 - White Bursage *Ambrosia dumosa*
 - Desert Honeywuckle *Anticarsina thurberi*
 - Fourwing Saltbush *Atriplex canescens*
 - Quailbush *Atriplex lentiformis*
 - Desert Saltbush *Atriplex polycarpa*
 - Rod Barberry *Berberis haematoscarpa*
 - Fairy Duster *Calliandra eriophylla*
 - Desert Senna *Cassia covillei*
 - Desert Hackberry *Celtis pallida*
 - Hopbush *Dodonaea viscosa*
 - Sacred Datura *Datura wrightii*
 - Brittlebush *Encelia farinosa*
 - Green Brittlebush *Encelia frutescens*
 - Mormon Tea *Ephedra aspera*
 - Turpentine Bush *Eriogonum lutescens*
 - Flat-top Buckwheat *Eriogonum fasciculatum*
 - Snakeweed *Gutierrezia sarothrae*
 - Desert Lavender *Oryza ameryi*
 - Chaparral *Justicia californica*
 - Crocodile Bush *Larrea tridentata*
 - Deer Yucca *Lotus rigidus*
 - Wallberry *Lycium andersonii*
 - Arrow Weed *Pluchea sericea*
 - Jobba Bush *Simmondsia chinensis*
 - Trist *Tristis californica*
 - Goldeneye *Viguiera deltoidea*
 - Greythorn *Ziziphus obtusifolia*

- SUCCULENTS / CACTI**
- Desert Milkweed *Acletolepis subulata*
 - Agave *Agave Speciosus*
 - Golden Barrel *Echinocactus grusonii*
 - Giant Hesperaloe *Hesperaloe parviflora*
 - Senita *Lophocereus schottii*
 - Organ Pipe Cactus *Stenocereus thurberi*

- SHRUBS / BUSHES**
- Black Daka *Dalea frutescens*
 - Sage *Leucophyllum speciosum*
 - Baya Ruellia *Ruellia brittaniana*
 - Desert Ruellia *Ruellia peninsularis*
 - Autumn Sage *Salvia greggii*

- ANNUALS / PERENNIALS / VINES**
- Potted annual flowers *By season*
 - Angelsite Daisy *Hymenocallis acutilis*
 - Yellow morning glory *Merrima aurea*

- GRASSES**
- Beardgrass *Nolina strumosa*
 - Hybrid bermuda lawn *(Tifway 419 or equal)Cynodon dactylon*

- ANNUALS / PERENNIALS / VINES**
- Sand Verbena *Abronia villosa*
 - Fiddleneck *Amniculus intermedia*
 - Desert Marigold *Baileya multiradiata*
 - Coyote Gourd *Cucurbita digitata*
 - Desert Hyacinth *Dieckholtemmipulchellum*
 - Dogwood *Dryasida paniculata*
 - Woolly Daisy *Eriophyllum laemosum*
 - Mexican Gold Poppy *Eschscholzia mexicana*
 - Gaillardia *Gaillardia aratida*
 - Starflower *Gilia latifolia*
 - Slender Jamnia Vine *Jamnia gracilis*
 - Goldfields *Lasatheris chrysantha*
 - Bladdernut Mustard *Lesquerella Gordonii*
 - Desert Lupine *Lupinus sparsiflorus*
 - Purple Aster *Machaeranthera asteroides*
 - Blackfoot Daisy *Melampodium leucanthum*
 - Owl's Clover *Orelocarpus parsonsianus*
 - Parry's Penstemon *Penstemon parryi*
 - Arizona Penstemon *Penstemon pseudospectabilis*
 - Desert Hibiscus *Phacelia campanularia*
 - Scorpionwood *Phacelia crenulata*
 - Cream Cup *Platystemon californica*
 - Devil's Claw *Proboscidea purpuriflora*
 - Paper Flower *Prostanthera cooperi*
 - Indian Wheat *Plantago peruviana*
 - Desert Chairoy *Rafinesquina mexicanana*
 - Desert Chia *Salvia columbiana*
 - Desert Glandulifer *Sphaeralcea ambigua*
 - Desert Straw *Stephanomeria pauciflora*

- GRASSES**
- Purple threeawn *Arctostaphylos purpurea*
 - Needle grama *Bouteloua aristolobolia*
 - Sideoats grama *Bouteloua curtipendula*
 - Curly mesquite *Hilaria belangeri*
 - Fluffgrass *Eriogonum pulchellum*

The following plant palette is in addition to the above referenced list. The following species will be used in and around the developments clubhouse and connected common areas. (These areas will not be counted as revegetated NAGS)

- TREES**
- Casahuate *Casahuate calacalco*
 - Desert Willow *Chilopsis linearis*
 - Gregg Ash *Fraxinus greggii*
 - Texas Ebony *Pithecellobium flexicaule*

- SUCCULENTS / CACTI**
- Desert Milkweed *Acletolepis subulata*
 - Agave *Agave Speciosus*
 - Golden Barrel *Echinocactus grusonii*
 - Giant Hesperaloe *Hesperaloe parviflora*
 - Senita *Lophocereus schottii*
 - Organ Pipe Cactus *Stenocereus thurberi*

- SHRUBS / BUSHES**
- Black Daka *Dalea frutescens*
 - Sage *Leucophyllum speciosum*
 - Baya Ruellia *Ruellia brittaniana*
 - Desert Ruellia *Ruellia peninsularis*
 - Autumn Sage *Salvia greggii*

- ANNUALS / PERENNIALS / VINES**
- Potted annual flowers *By season*
 - Angelsite Daisy *Hymenocallis acutilis*
 - Yellow morning glory *Merrima aurea*

- GRASSES**
- Beardgrass *Nolina strumosa*
 - Hybrid bermuda lawn *(Tifway 419 or equal)Cynodon dactylon*

This list is intended as a guide and is subject to change. Any changes shall be approved by City staff as required.

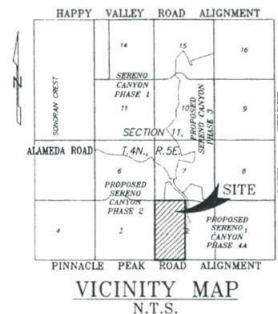
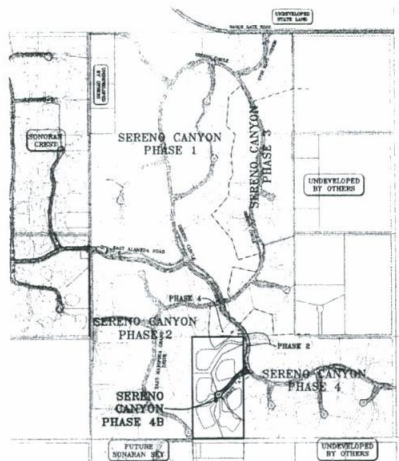
2-PP-2008#2
1st: 4/22/11

SERENO CANYON
PHASE 4B - CONCEPTUAL LANDSCAPE PLAN

PRELIMINARY PLAT FOR
SERENO CANYON PHASE 4B
 LYING WITHIN SECTION 11, TOWNSHIP 4 NORTH, RANGE 5 EAST, OF
 THE GILA AND SALT RIVER MERIDIAN, MARICOPA COUNTY, ARIZONA

TRACT AREAS		
LOT NUMBER	AREA (AC)	DESCRIPTION/USE
TRACT A	0.55 AC	RIGHT-OF-WAY
TRACT B	0.10 AC	RIGHT-OF-WAY TO BE DEDICATED BY SEPARATE INSTRUMENT
TRACT C	0.47 AC	TO BE DEDICATED BY SEPARATE INSTRUMENT AS PART OF LOT 1 OF SERENO CANYON PHASE 4

LOT AREAS	
LOT NUMBER	AREA (AC)
1	3.47 AC
2	4.26 AC
3	2.60 AC
4	3.43 AC
5	2.95 AC
6	2.32 AC



DEVELOPER
 CROWN COMMUNITY DEVELOPMENT
 3600 THAYER COURT, SUITE 100
 AURORA, IL 60504
 CONTACT: TERI FRANKIEWICZ
 (630) 566-2522 FAX: (630) 698-0480

CIVIL ENGINEER
 WOOD, PATEL AND ASSOCIATES
 2051 WEST NORTHERN, SUITE 100
 PHOENIX, AZ 85021
 CONTACT: CURTIS BROWN, P.E.
 (602) 335-8500 FAX: (602) 335-8580

LAND PLANNER
 LVA URBAN DESIGN STUDIO
 7502 E. MAIN STREET
 SCOTTSDALE, AZ 85251
 CONTACT: STEVEN J. VOSS
 (480) 944-0940 FAX: (480) 944-7332

LANDSCAPE ARCHITECT
 LVA URBAN DESIGN STUDIO
 7502 E. MAIN STREET
 SCOTTSDALE, AZ 85251
 CONTACT: STEVEN J. VOSS
 (480) 944-0940 FAX: (480) 944-7332

SHEET INDEX

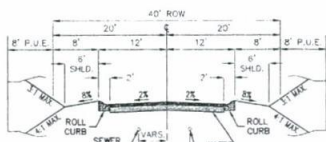
SHEET 1	COVER SHEET
SHEET 2-3	SITE PLAN
SHEET 4	PHASING PLAN
SHEET 5	TOPOGRAPHY MAP
SHEET 6	CROSS SECTION DETAIL
SHEET 7	CUT AND FILLS PLAN

SITE DATA

EXISTING ZONING R-130 ESL
 GROSS ACREAGE 20.05 AC
 NET ACREAGE 19.24 AC
 YIELD 6 LOTS
 DENSITY 0.30 UNIT/AC
 MIN LOT SIZE 101,059 SQ. FT.
 AVG. LOT SIZE 138,157 SQ. FT.
 SEWER CITY OF SCOTTSDALE
 WATER CITY OF SCOTTSDALE
 FIRE CITY OF SCOTTSDALE
 ELECTRIC ARIZONA PUBLIC SERVICE
 TELEPHONE COX COMMUNICATIONS
 CABLE COX COMMUNICATIONS
 GAS SOUTHWEST GAS

NOTES

- 1) AN 8' P.U.E. WILL BE PROVIDED ON BOTH SIDES OF FULL STREETS, UNLESS DETERMINED, IT IS NOT NEEDED.
- 2) THE STREETS DESIGNATED AS TRACTS "A" AND "B" ARE PRIVATE STREETS TO BE OWNED AND MAINTAINED BY THE PROPERTY OWNERS ASSOCIATION.
- 3) ALL STREETS AND TRACTS WILL BE MAINTAINED BY THE HOME OWNERS ASSOCIATION IN ACCORDANCE WITH APPLICABLE RECORDED RESTRICTIONS, AND DEVELOPMENT AGREEMENT AND STIPULATIONS.
- 4) DRAINAGE EASEMENTS WILL BE MAINTAINED BY THE HOMEOWNERS ASSOCIATION.
- 5) EACH LOT WILL CONTAIN A MAXIMUM BUILDING CONSTRUCTION ENVELOPE. THE AREA OUTSIDE THE BUILDING CONSTRUCTION ENVELOPE IS DESIGNATED AS N.A.O.S. AND SHALL BE PERMANENTLY MAINTAINED AS NATURAL DESERT OPEN SPACE.
- 6) CUTS AND FILLS - THERE ARE NO CUTS AND FILLS OVER 12" IN ACCORDANCE WITH CITY OF SCOTTSDALE ESL ORDINANCE.



LOCAL RESIDENTIAL STREET
 3' R-19 AC. OVER 6" A.B.C. PAVEMENT SECTION PER M.A.G. SPEC 702. CONTRACTOR TO SUPPLY 95% COMPACTION AT SUBGRADE.
 LOOKING UP STATION PRIVATE STREET

LEGEND

---	C.D.S.	CITY OF SCOTTSDALE
---	M.C.R.	MARICOPA COUNTY RECORDER
---	DOC.	DOCUMENT
---	P.U.E.	PUBLIC UTILITY EASEMENT
---	PUB. D.E.	PUBLIC DRAINAGE EASEMENT
---	D.E.	DRAINAGE EASEMENT
---	EX.	EXISTING
---	P.V.T.	PRIVATE
---	R.O.W.	RIGHT-OF-WAY
---	V.N.A.E.	VEHICULAR NON ACCESS EASEMENT
---	A.E.	ACCESS EASEMENT
---	S.D.L.	SIGHT DISTANCE EASEMENT
---	N.A.O.S.	NATURAL AREA AND OPEN SPACE EASEMENT
---		EASEMENTS AS NOTED
---		SUBDIVISION BOUNDARY
---		EASEMENTS AS NOTED
---		CENTERLINE
---		RIGHT-OF-WAY
---		PHASE LINE
---		BUILDING ENVELOPE
---		SEWER LINE
---		WATER LINE
---		DRAINAGE FLOW

SERENO CANYON - PHASE 4B
 PRELIMINARY PLAT
 COVER SHEET



WOOD/PATEL
 CURTIS BROWN, P.E.
 2051 WEST NORTHERN, SUITE 100
 PHOENIX, AZ 85021

2051 W. Northern Ave
 Phoenix, AZ 85021
 (602) 335-8500
 www.woodpatel.com

ENGINEER C. BROWN
 DESIGNER K. LOPEZ
 CAD TECHNICIAN K. LOPEZ
 SCALE (HORIZ) AS NOTED
 SCALE (VERT) AS NOTED
 DATE 12/06/07
 JOB NUMBER 073093
 SHEET 1 OF 7

2-PP-2008#2
 1st: 4/22/11

XXX-XX-99-0000-PP-XX-XX