

SERENO CANYON-PHASE 4B
 PRELIMINARY PLAN
 SITE PLAN

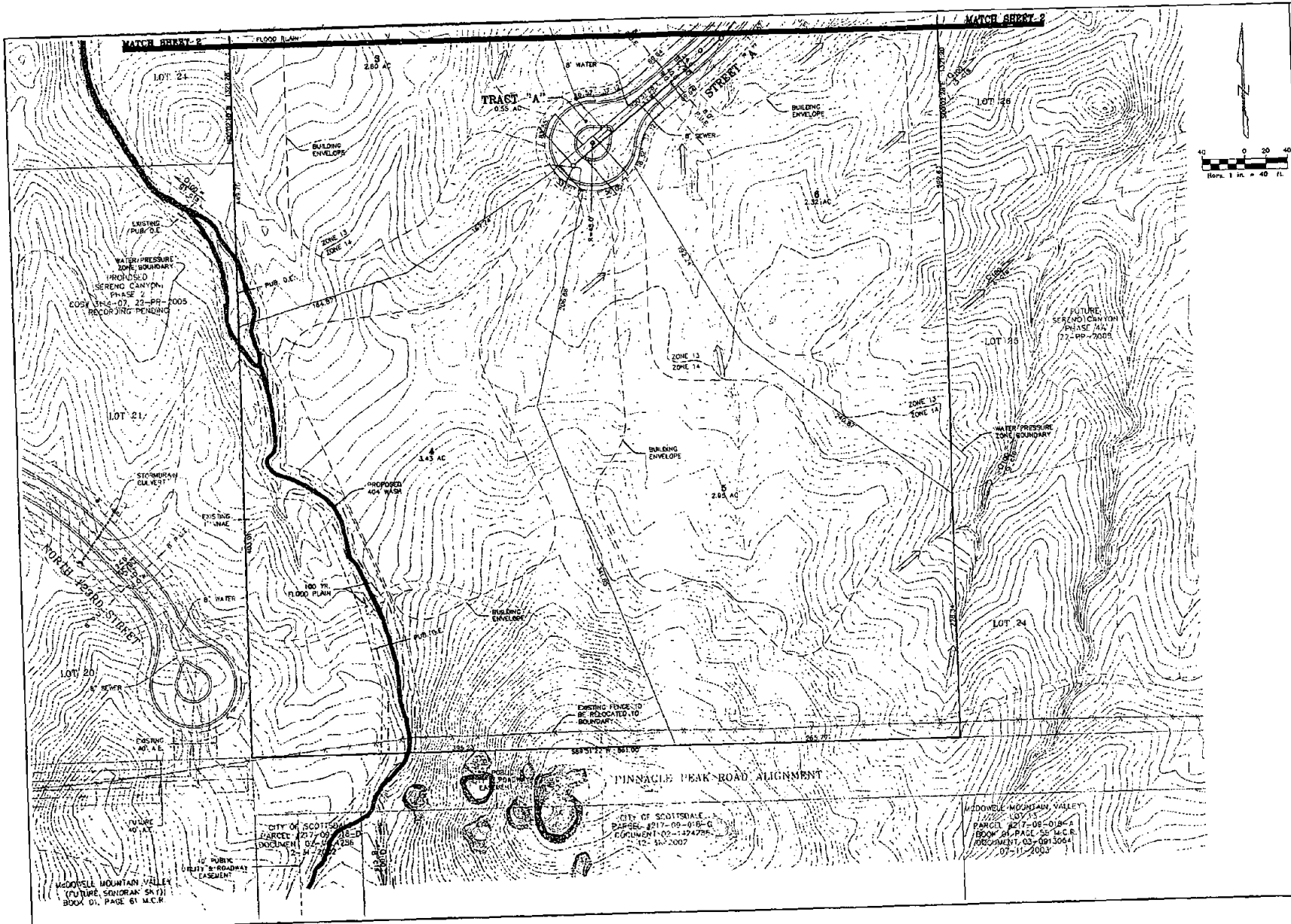


WOOD/PATEL
 LANDSCAPE ARCHITECTURE & WATER CONSTRUCTION
 2091 E. MacArthur Ave.
 Folsom, CA 95602
 (916) 938-4500
 www.woodpatel.com

OWNER	C. BROWN
DESIGNER	K. LOEFLER
CAD DESIGNER	K. LOEFLER
SCALE (GRAPH)	1" = 60'
SCALE (TEXT)	N/A
DATE	12/02/2011
DWG NUMBER	023003
SHEET	2 OF 7

12-PP-2003 (08) 6 X 10-000

MATCH SHEET 3
 2.00 AC
 100 FT FLOOD PLAN



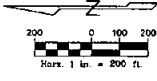
SERENO CANYON - PHASE 4B
PRELIMINARY PLAT
SITE PLAN



WOOD/PATEL
 LANDSCAPE ARCHITECTS & ENGINEERS
 2055 W. Northberg Ave.
 Phoenix, AZ 85021
 (602) 336-8606
 www.woodpatel.com

ENGINEER: C. BLOOM
 DESIGNER: L. LORCI
 SCALE (HORIZ): 1" = 40'
 SCALE (VERT): N/A
 DATE: 11/06/07
 JOB NUMBER: 075053
 SHEET: 3 OF 7

XX-PF-200X GSF# X-C-XI



LEGEND

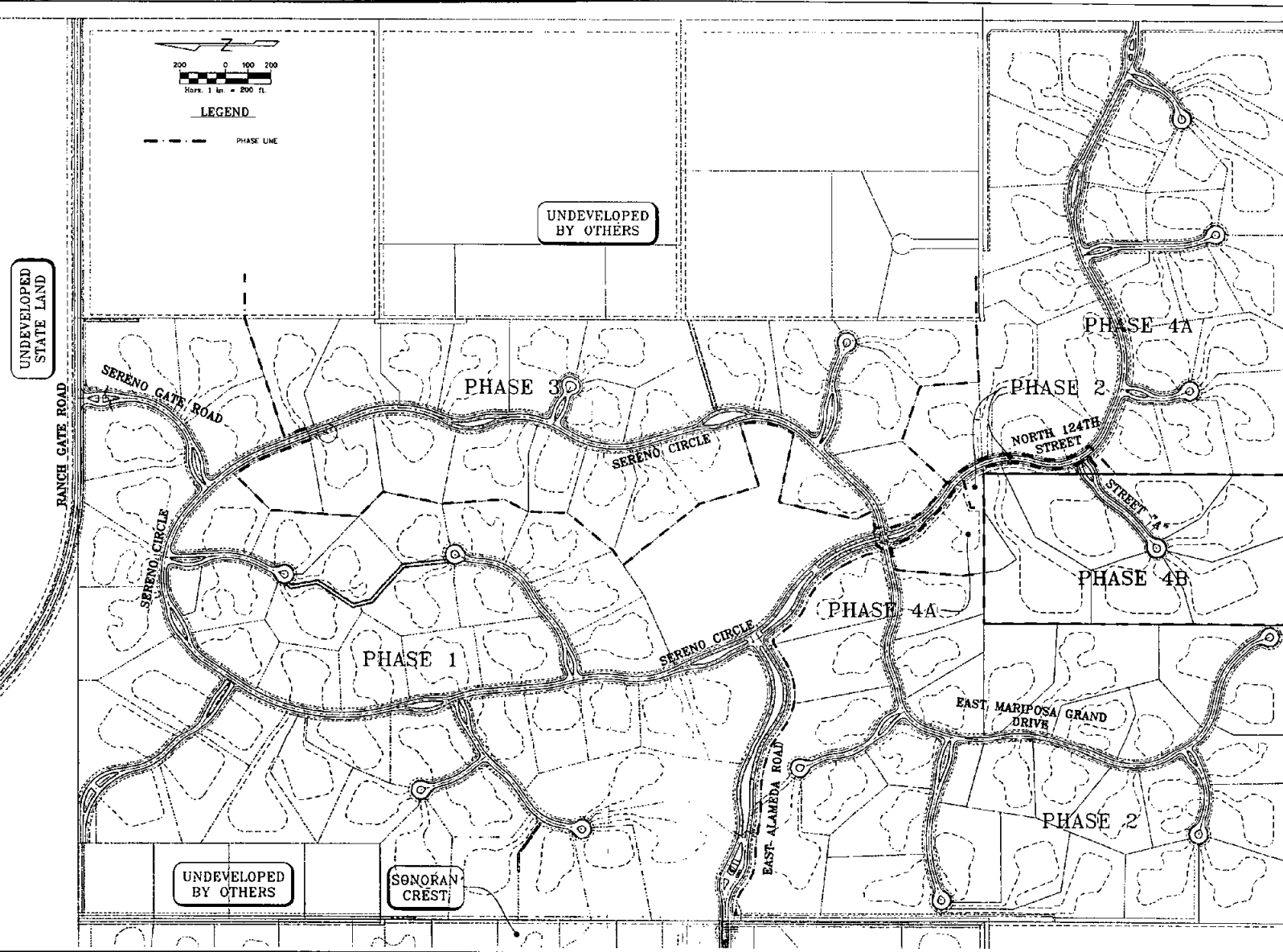
--- PHASE LINE

UNDEVELOPED STATE LAND

UNDEVELOPED BY OTHERS

UNDEVELOPED BY OTHERS

FUTURE SONORAN SKY



UNDEVELOPED BY OTHERS

SONORAN CREST

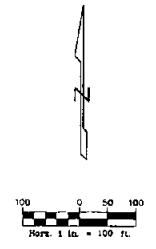
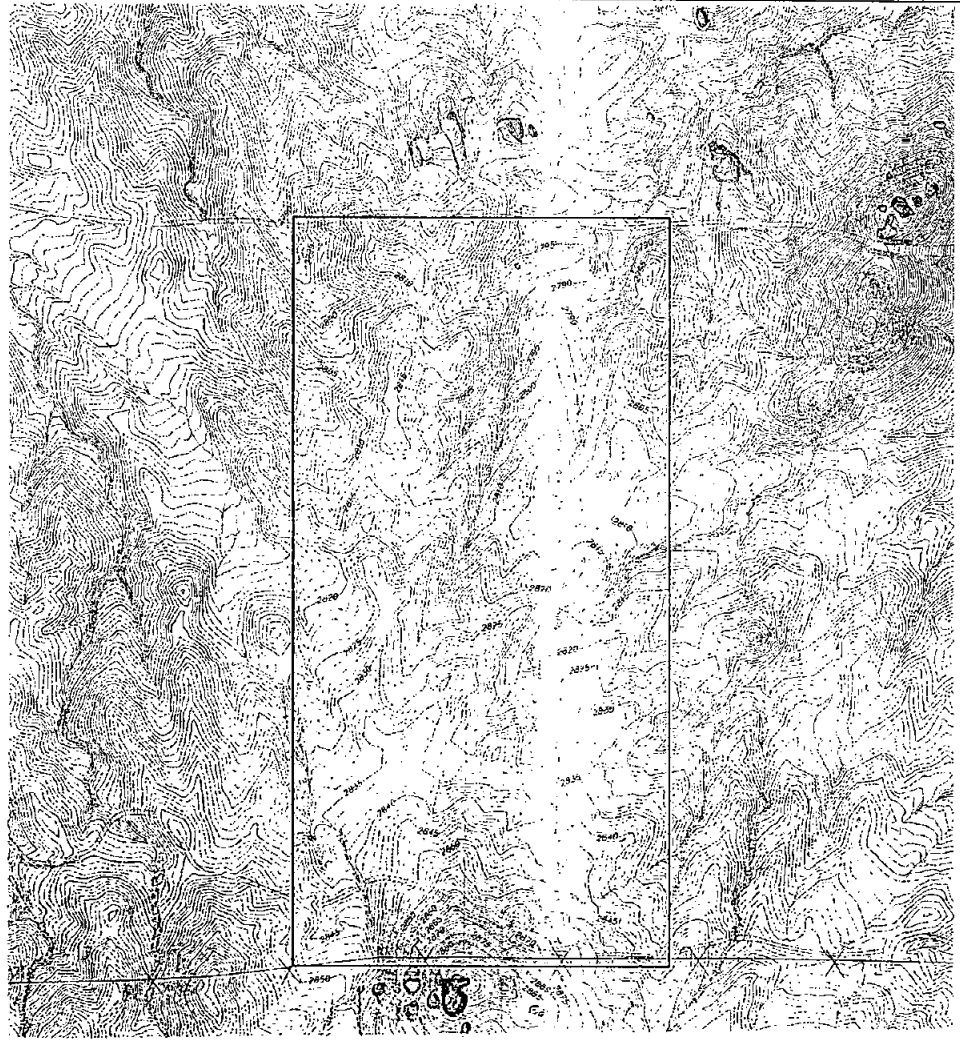


WOOD/PATEL

31101
 WOOD/PATEL
 ENGINEERS
 1000 W. MARIPOSA AVE.
 PHOENIX, AZ 85021
 (602) 325-1500
 www.woodpatel.com
 PROJECT: SERENO CANYON PHASE 4B
 ENGINEER: C. DESOBRI
 DESIGNER: L. LOPEZ
 CAD TECHNICIAN: L. LOPEZ
 SCALE (PLAN): 1" = 200'
 SCALE (VERT): N/A
 DATE: 12/08/02
 SHEET NUMBER: 07/0813
 SHEET: 4 OF 7

SERENO CANYON - PHASE 4B
 PRELIMINARY PLAT
 PHASING PLAN

XX-PF-200X (GS#S XX-XX)



SERENO CANYON - PHASE 4B
 PRELIMINARY PLAT
 TOPOGRAPHY MAP

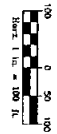
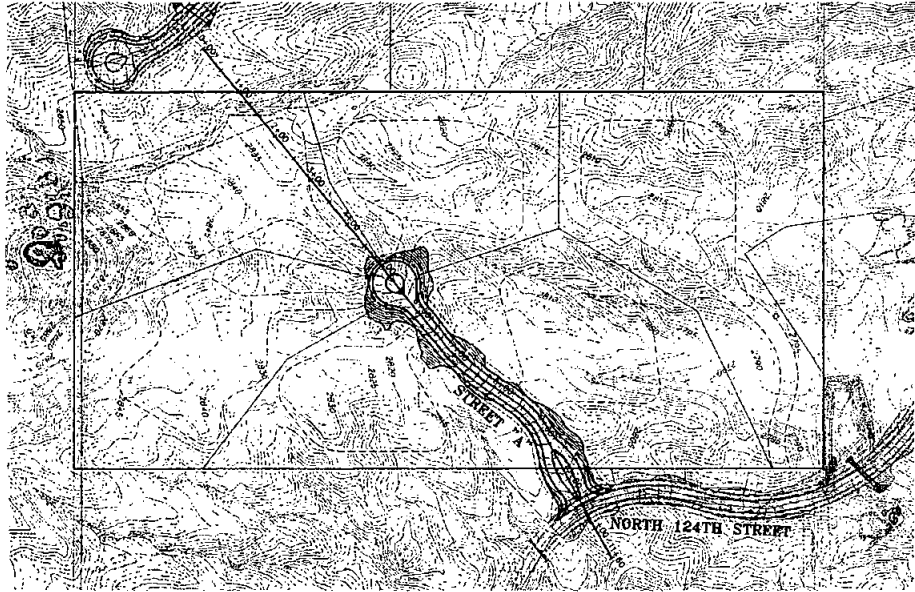
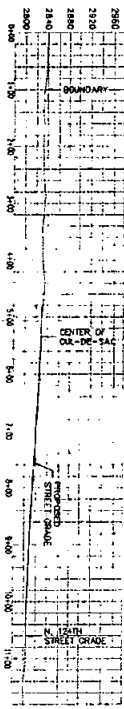


WOOD/PATEL
 LAND DEVELOPMENT ENGINEERS & ARCHITECTS
 2051 W. Northern Ave.
 Phoenix, AZ 85021
 (602) 235-8000
 www.woodpatel.com

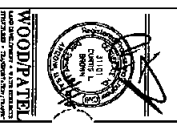
REGISTERED PROFESSIONAL ENGINEER - No. 062907
 REGISTERED PROFESSIONAL ARCHITECT - No. 062907

ENGINEER	G. BROWN
DESIGNER	K. LOPEZ
CAD TECHNICIAN	K. LOPEZ
SCALE (HORIZ)	1" = 200'
SCALE (VERT)	N/A
DATE	12/08/07
JOB NUMBER	073083
SHEET	5 OF 7

XX-PP-200X (CS# 5 XX-XX)



XX-PP-200X (CS) 5 XX-XX
 SHEET 8 OF 7
 DATE 12/09/07
 072003



SERENO CANYON-PHASE 4B
 PRELIMINARY PLAT
 CROSS SECTION DETAIL

