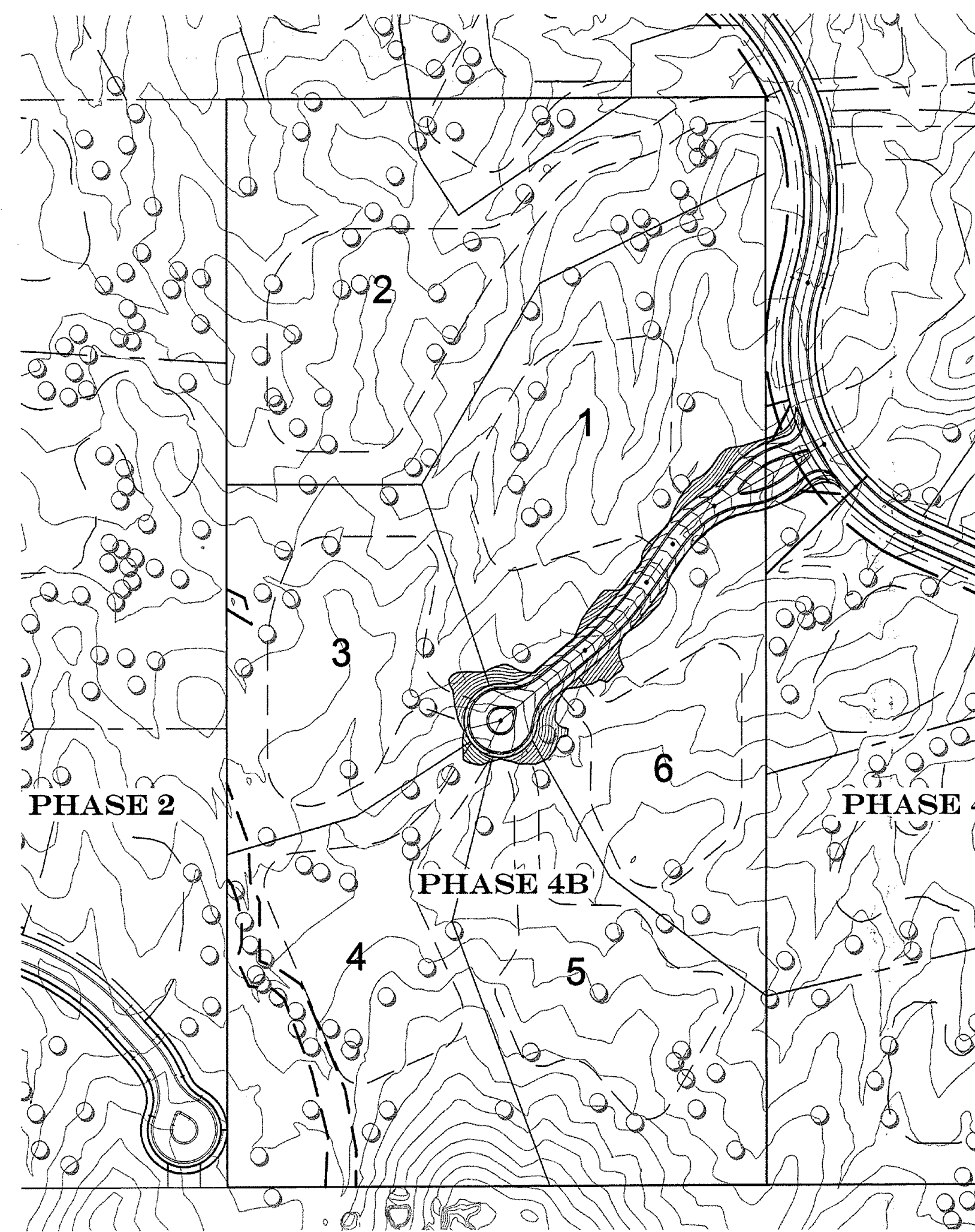
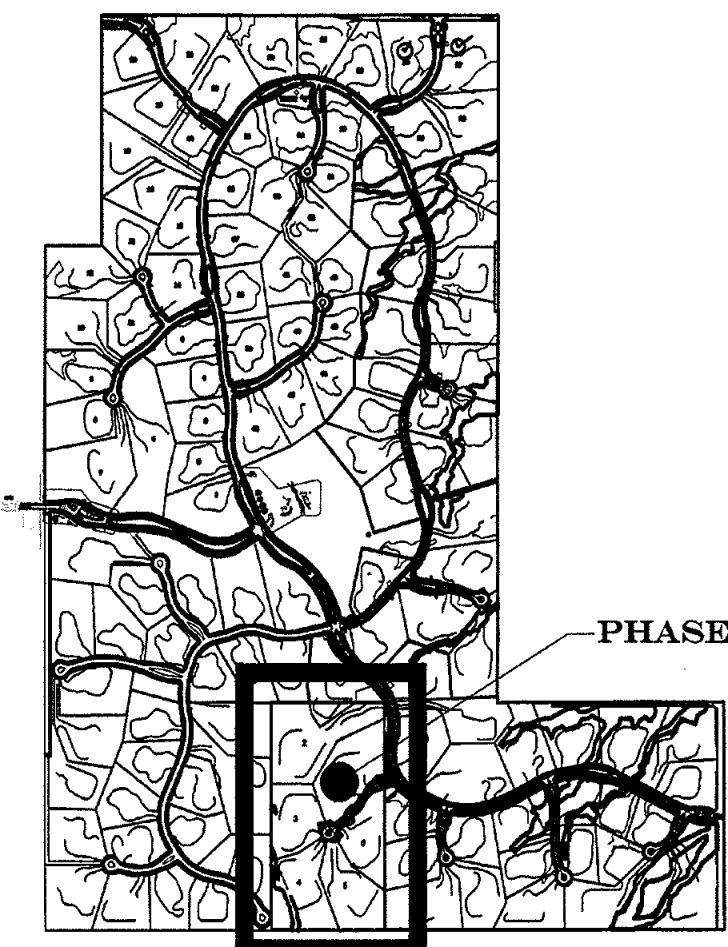
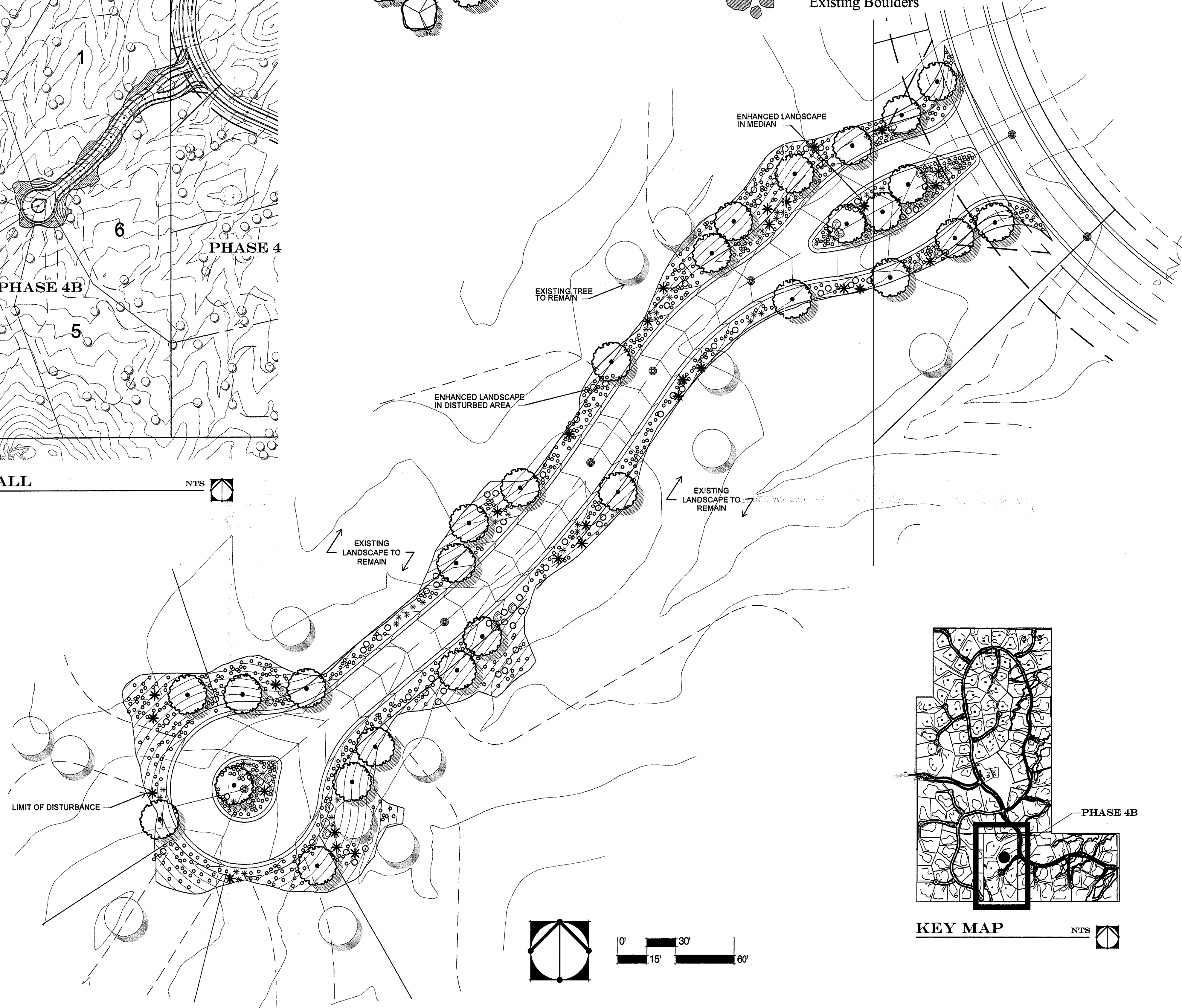


LANDSCAPE LEGEND

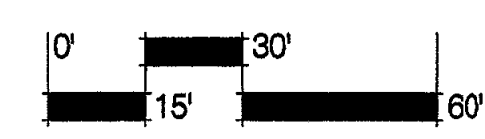
- Existing Tree / Veg. to remain
- New Understory Vegetation (shrubs / cacti / grasses / etc.)
- New Boulders (Large specimen type to blend with existing)
- New Landscape / Enhanced Veg.
- Existing Boulders



PHASE 4B OVERALL



KEY MAP



The following plant palette has been adopted from the City of Scottsdale's E.S.L.O. plant list. (All species shown below are in conformance with E.S.L.O. standards)

TREES

- | | |
|---------------------|--------------------------------|
| Whitethorn Acacia | <i>Acacia constricta</i> |
| Catclaw Acacia | <i>Acacia greggii</i> |
| Crucifixion Thorn | <i>Canotia holocantha</i> |
| Hackberry | <i>Celtis pallida</i> |
| Blue Palo Verde | <i>Cercidium floridum</i> |
| Foothill Palo Verde | <i>Cercidium microphyllum</i> |
| Desert Willow | <i>Chilopsis linearis</i> |
| One-seeded Juniper | <i>Juniperus monosperma</i> |
| Ironwood | <i>Olneya tesota</i> |
| Cottonwood | <i>Populus fremontii</i> |
| Arizona Mesquite | <i>Prosopis velutina</i> |
| Scrub Oak | <i>Quercus turbinella</i> |
| Sugar Sumac | <i>Rhus ovata</i> |
| Arizona Rosewood | <i>Vauquelinia californica</i> |

SUCCULENTS / CACTI

- | | |
|--------------------------|-------------------------------------|
| Saguaro | <i>Carnegiea gigantea</i> |
| Hedgehog Cactus | <i>Echinocereus engelmannii</i> |
| Compass Barrel | <i>Ferocactus cylindraceus</i> |
| Barrel | |
| Fishhook Barrel | <i>Ferocactus wislizenii</i> Barrel |
| Ocotillo | <i>Fouquieria splendens</i> |
| Fishhook Cactus | <i>Mammillaria microcarpa</i> |
| Cactus | |
| Staghorn Cholla | <i>Opuntia acanthocarpa</i> |
| Cholla | |
| Teddy Bear Cholla | <i>Opuntia bigelovii</i> Cholla |
| Engelmann's Prickly-pear | <i>Opuntia engelmannii</i> |
| Chainfruit Cholla | <i>Opuntia fulgida</i> |
| Desert Christmas Cholla | <i>Opuntia leptocaulis</i> |
| Night-Blooming Cereus | <i>Peniocereus greggii</i> |
| Banana Yucca | <i>Yucca baccata</i> |
| Soaptree Yucca | <i>Yucca elata</i> |

SHRUBS / BUSHES

- | | |
|-----------------------|-------------------------------|
| Giant Bursage | <i>Ambrosia ambrosioides</i> |
| Triangle-leaf Bursage | <i>Ambrosia deltoidea</i> |
| White Bursage | <i>Ambrosia dumosa</i> |
| Desert Honeysuckle | <i>Anisacanthus therberi</i> |
| Fourwing Saltbush | <i>Atriplex canescens</i> |
| Quailbrush | <i>Atriplex lentiformis</i> |
| Desert Saltbush | <i>Atriplex polycarpa</i> |
| Red Barberry | <i>Berberis haematocarpa</i> |
| Fairy Duster | <i>Calliandra eriophylla</i> |
| Desert Senna | <i>Cassia covesii</i> |
| Desert Hackberry | <i>Celtis pallida</i> |
| Hopbush | <i>Dodonaea viscosa</i> |
| Sacred Datura | <i>Datura wrightii</i> |
| Brittlebush | <i>Encelia farinosa</i> |
| Green Brittlebush | <i>Encelia frutescens</i> |
| Mormon Tea | <i>Ephedra aspera</i> |
| Turpentine Bush | <i>Ericameria laricifolia</i> |
| Flat-top Buckwheat | <i>Eriogonum fasciculatum</i> |
| Snakeweed | <i>Gutierrezia sarothrae</i> |
| Desert Lavender | <i>Hyptis emoryi</i> |
| Chuparosa | <i>Justicia californica</i> |
| Creosote Bush | <i>Larrea tridentata</i> |
| Deer Vetch | <i>Lotus rigidus</i> |
| Wolfberry | <i>Lycium andersonii</i> |
| Arrow Weed | <i>Pluchea sericea</i> |
| Jojoba Bush | <i>Simmondsia chinensis</i> |
| Trifix | <i>Trixis californica</i> |
| Goldeneye | <i>Viguiera deltoidea</i> |
| Greythorn | <i>Ziziphus obtusifolia</i> |

ANNUALS / PERENNIALS / VINES

- | | |
|----------------------|------------------------------------|
| Sand Verbena | <i>Abronia villosa</i> |
| Fiddleneck | <i>Amsinckia intermedia</i> |
| Desert Marigold | <i>Baileya multiradiata</i> |
| Coyote Gourd | <i>Cucurbita digitata</i> |
| Desert Hyacinth | <i>Dichelostemma pulchellum</i> |
| Dogweed | <i>Dyssodia pentachaeta</i> |
| Woolly Daisy | <i>Eriophyllum lanosum</i> |
| Mexican Gold Poppy | <i>Eschscholzia mexicana</i> |
| Gaillardia | <i>Gaillardia aristata</i> |
| Starflower | <i>Gilia latifolia</i> |
| Slender Janusia Vine | <i>Janusia gracilis</i> |
| Goldfields | <i>Lasthenia chrysostoma</i> |
| Bladderpod Mustard | <i>Lesquerella gordonii</i> |
| Desert Lupine | <i>upinus sparsiflorus</i> |
| Purple Aster | <i>Machaeranthera asteroides</i> |
| Blackfoot Daisy | <i>Melampodium leucanthum</i> |
| Owl's Clover | <i>Orthocarpus purpurascens</i> |
| Parry's Penstemon | <i>Penstemon parryi</i> |
| Arizona Penstemon | <i>Penstemon pseudospectabilis</i> |
| Desert Bluebell | <i>Phacelia campanularia</i> |
| Scorpionweed | <i>Phacelia crenulata</i> |
| Cream Cups | <i>Platystemon californicus</i> |
| Devil's Claw | <i>Proboscidea parviflora</i> |
| Paper Flower | <i>Psilostrophe cooperi</i> |
| Indian Wheat | <i>Plantago purshii</i> |
| Desert Chicory | <i>Rafinesquia neomexicana</i> |
| Desert Chia | <i>Salvia columbariae</i> |
| Desert Globemallow | <i>Sphaeralcea ambigua</i> |
| Desert Straw | <i>Stephanomeria pauciflora</i> |

GRASSES

- | | |
|-----------------|-------------------------------|
| Purple threeawn | <i>Aristida purpurea</i> |
| Needle grama | <i>Bouteloua aristidoides</i> |
| Sideoats grama | <i>Bouteloua curtipendula</i> |
| Curly mesquite | <i>Hilaria berlandieri</i> |
| Fluffgrass | <i>Erioneuron pulchellum</i> |

The following plant palette is in addition to the above referenced list. The following species will be used in and around the developments clubhouse and connected common areas. (These areas will not be counted as revegetated NAOS)

TREES

- | | |
|---------------|----------------------------------|
| Cascalote | <i>Caesalpinia cacalaco</i> |
| Desert Willow | <i>Chilopsis linearis</i> |
| Gregg Ash | <i>Fraxinus greggii</i> |
| Texas Ebony | <i>Pithecellobium flexicaule</i> |

SUCCULENTS / CACTI

- | | |
|-------------------|------------------------------|
| Desert Milkweed | <i>Asclepius subulata</i> |
| Agave | <i>Agave Species</i> |
| Golden Barrel | <i>Echinocactus grusonii</i> |
| Giant Hesperaloe | <i>Hesperaloe funifera</i> |
| Senita | <i>Lophocereus schottii</i> |
| Organ Pipe Cactus | <i>Stenocereus thurberi</i> |

SHRUBS / BUSHES

- | | |
|----------------|-----------------------------|
| Black Dalea | <i>Dalea frutescens</i> |
| Sage | <i>Leucophyllum species</i> |
| Baja Ruellia | <i>Ruellia brittoniana</i> |
| Desert Ruellia | <i>Ruellia peninsularis</i> |
| Autumn Sage | <i>Salvia greggii</i> |

ANNUALS / PERENNIALS / VINES

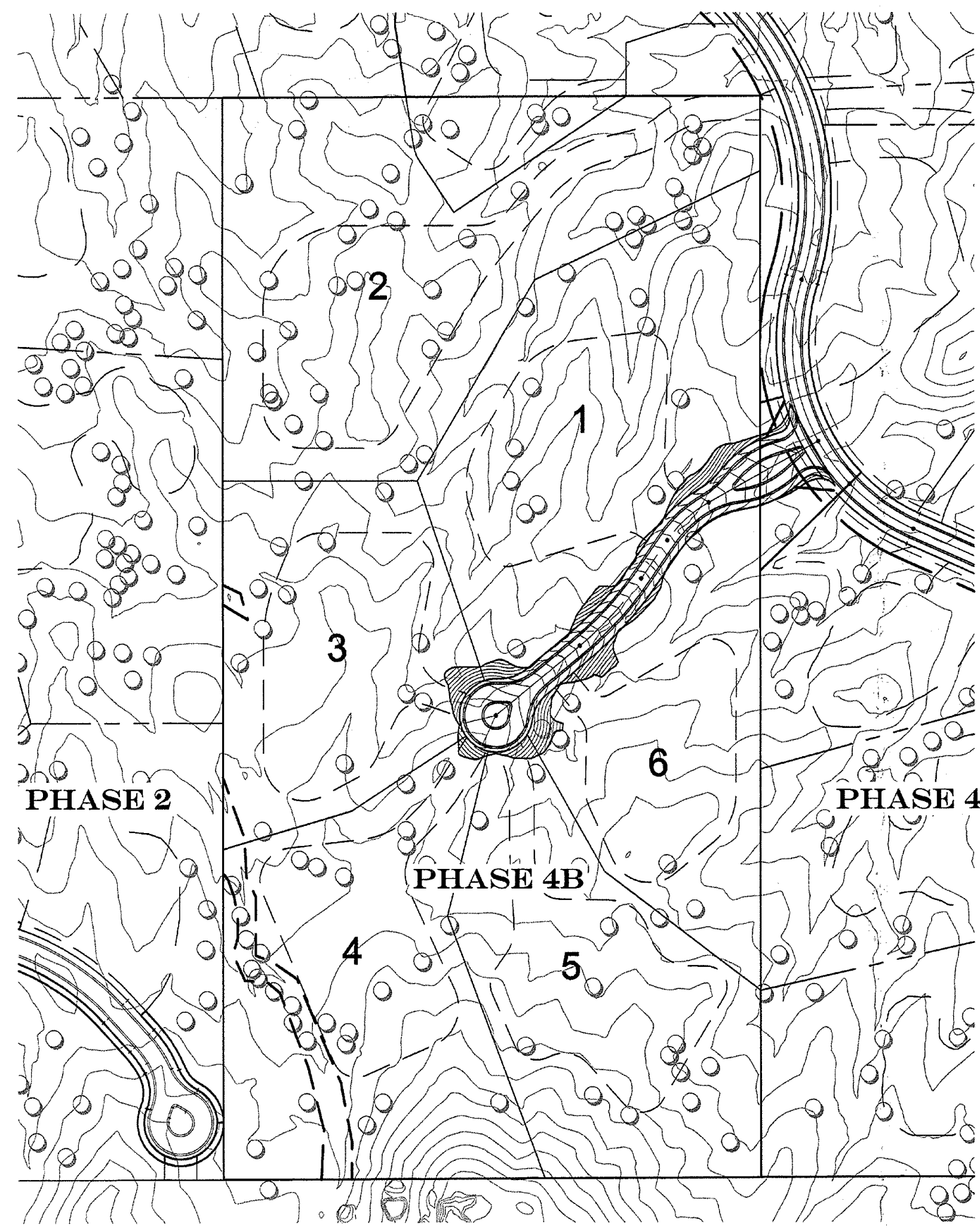
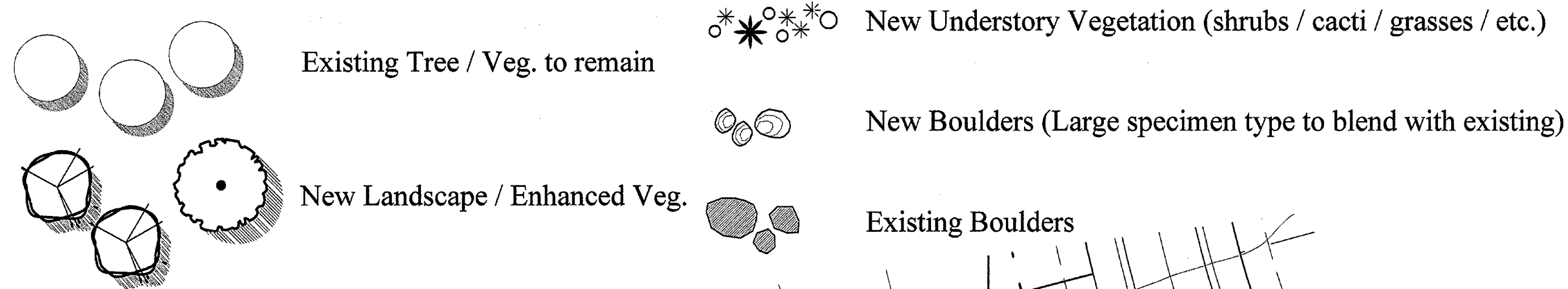
- | | |
|-----------------------|--------------------------|
| Potted annual flowers | By season |
| Angelita Daisy | <i>Hymenoxis acaulis</i> |
| Yellow morning glory | <i>Merrima aurea</i> |

GRASSES

- | | |
|---------------------|---------------------------------------|
| Beargrass | <i>Nolina erumpens</i> |
| Hybrid bermuda lawn | (Tifway 419 or equal)Cynodon dactylon |

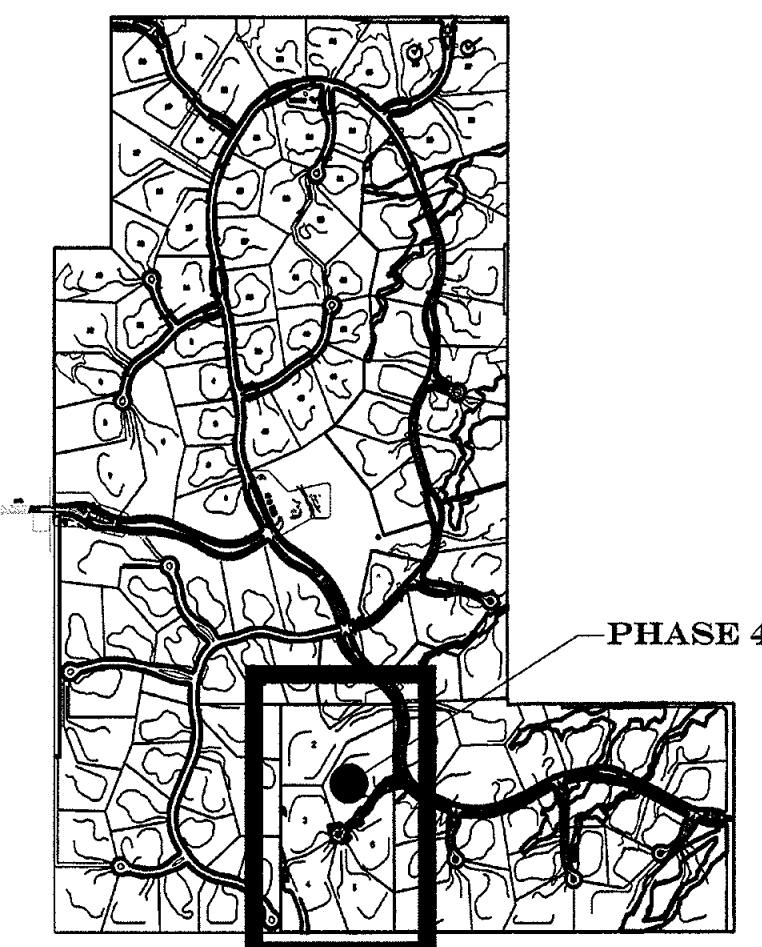
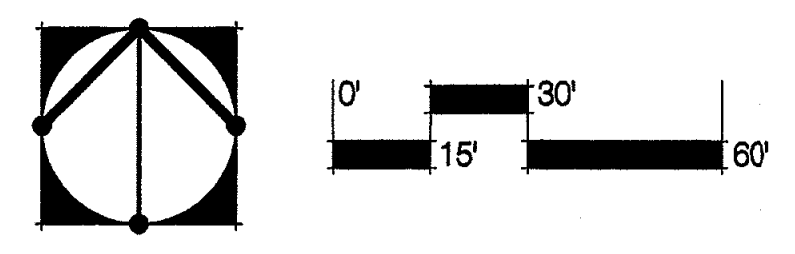
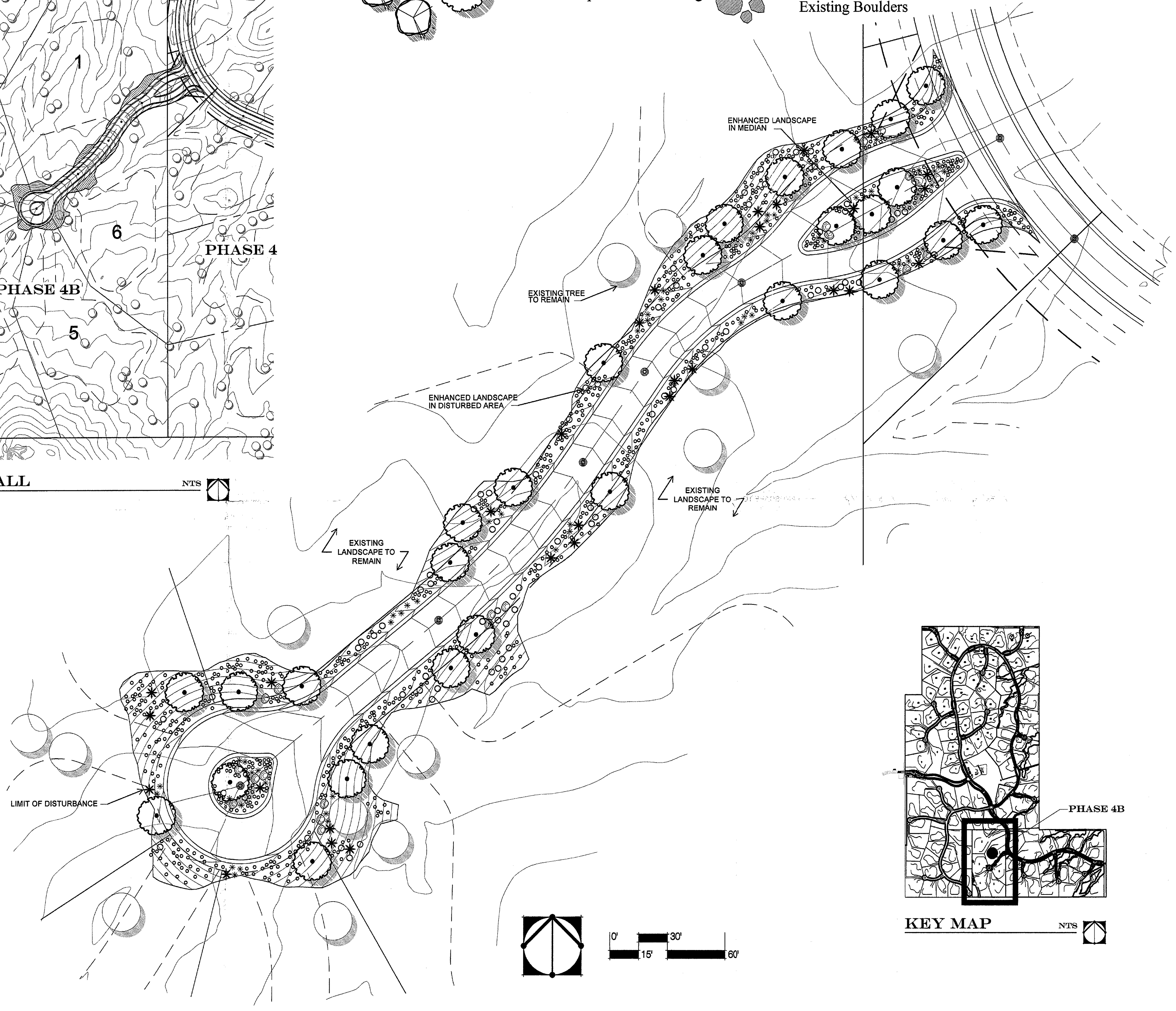
This list is intended as a guide and is subject to change. Any changes shall be approved by City staff as required.

LANDSCAPE LEGEND



PHASE 4B OVERALL

NTS



KEY MAP

PHASE 4B

The following plant palette has been adopted from the City of Scottsdale's E.S.L.O. plant list. (All species shown below are in conformance with E.S.L.O. standards)

- TREES**
- Whitethorn Acacia
 - Catclaw Acacia
 - Crucifixion Thorn
 - Hackberry
 - Blue Palo Verde
 - Foothill Palo Verde
 - Desert Willow
 - One-seeded Juniper
 - Ironwood
 - Cottonwood
 - Arizona Mesquite
 - Scrub Oak
 - Sugar Sumac
 - Arizona Rosewood

- SUCCULENTS / CACTI**
- Saguaro
 - Hedgehog Cactus
 - Compass Barrel
 - Barrel
 - Fishhook Barrel
 - Ocotillo
 - Fishhook Cactus
 - Cactus
 - Staghorn Cholla
 - Cholla
 - Teddy Bear Cholla
 - Engelmann's Prickly-pear
 - Chainfruit Cholla
 - Desert Christmas Cholla
 - Night-Blooming Cereus
 - Banana Yucca
 - Soaptree Yucca

- SHRUBS / BUSHES**
- Giant Bursage
 - Triangle-leaf Bursage
 - White Bursage
 - Desert Honeysuckle
 - Fourwing Saltbush
 - Quailbrush
 - Desert Saltbush
 - Red Barberry
 - Fairy Duster
 - Desert Senna
 - Desert Hackberry
 - Hopbush
 - Sacred Datura
 - Brittlebush
 - Green Brittlebush
 - Mormon Tea
 - Turpentine Bush
 - Flat-top Buckwheat
 - Snakeweed
 - Desert Lavender
 - Chuparosa
 - Creosote Bush
 - Deer Vetch
 - Wolfberry
 - Arrow Weed
 - Joboa Bush
 - Trixis
 - Goldeneye
 - Greythorn

- ANNUALS / PERENNIALS / VINES**
- Sand Verbena
 - Fiddleneck
 - Desert Marigold
 - Coyote Gourd
 - Desert Hyacinth
 - Dogweed
 - Woolly Daisy
 - Mexican Gold Poppy
 - Gaillardia
 - Starflower
 - Slender Janusia Vine
 - Goldfields
 - Bladderpod Mustard
 - Desert Lupine
 - Purple Aster
 - Blackfoot Daisy
 - Owl's Clover
 - Parry's Penstemon
 - Arizona Penstemon
 - Desert Bluebell
 - Scorpionweed
 - Cream Cup
 - Devil's Claw
 - Paper Flower
 - Indian Wheat
 - Desert Chicory
 - Desert Chia
 - Desert Globemallow
 - Desert Straw

- GRASSES**
- Purple threeawn
 - Needle grama
 - Sideoats grama
 - Curly mesquite
 - Fluffgrass

The following plant palette is in addition to the above referenced list. The following species will be used in and around the developments clubhouse and connected common areas. (These areas will not be counted as revegetated NAOS)

- TREES**
- Cascatote
 - Desert Willow
 - Gregg Ash
 - Texas Ebony
 - Caesalpinia cacalaco
 - Chilopsis linearis
 - Fraxinus greggii
 - Pithecellobium flexicaule

- SUCCULENTS / CACTI**
- Desert Milkweed
 - Agave
 - Golden Barrel
 - Giant Hesperaloe
 - Senita
 - Organ Pipe Cactus
 - Asclepius subulata
 - Agave Species
 - Echinocactus grusonii
 - Hesperaloe funifera
 - Lophocereus schottii
 - Stenocereus thurberi

- SHRUBS / BUSHES**
- Black Dalea
 - Sage
 - Baja Ruellia
 - Desert Ruellia
 - Autumn Sage
 - Dalea frutescens
 - Leucophyllum species
 - Ruellia Brittoniana
 - Ruellia peninsularis
 - Salvia greggii

- ANNUALS / PERENNIALS / VINES**
- Potted annual flowers
 - Angelita Daisy
 - Yellow morning glory
 - By season
 - Hymenoxis acaulis
 - Merrima aurea

This list is intended as a guide and is subject to change. Any changes shall be approved by City staff as required.