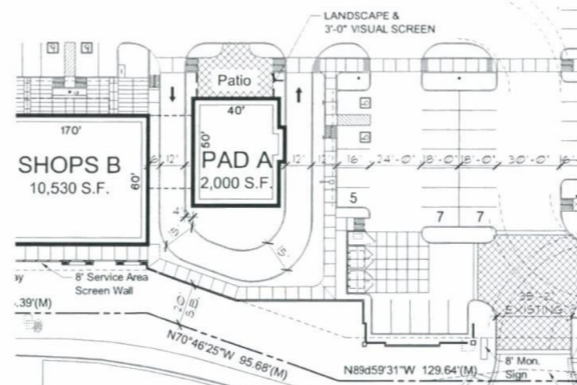
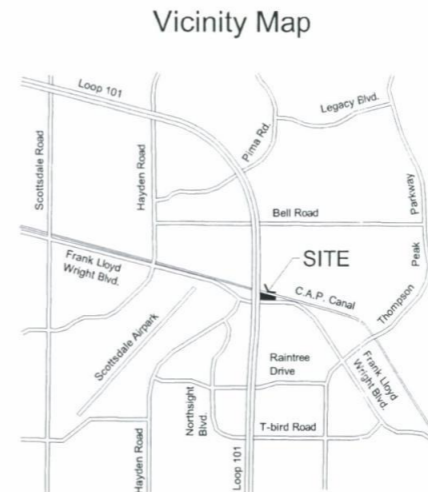


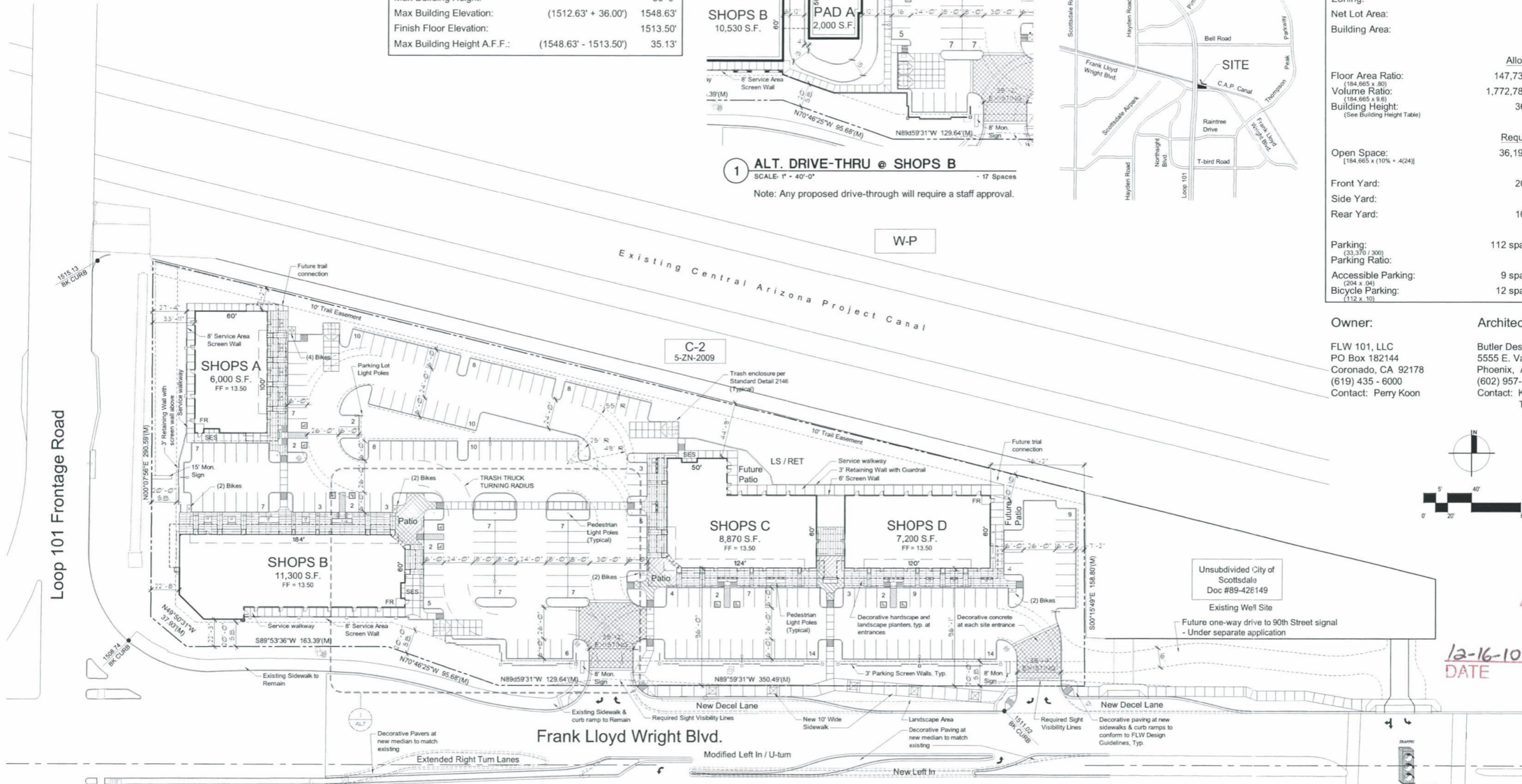
| Building Height | | |
|-----------------------------|-----------------------|----------|
| Average Curb Elevation: | | 1511.63' |
| Elevation Increase: | | 1.00' |
| F.F. Elevation Base Point: | (1511.63' + 1.00') | 1512.63' |
| Max Building Height: | | 36'-0" |
| Max Building Elevation: | (1512.63' + 36.00') | 1548.63' |
| Finish Floor Elevation: | | 1513.50' |
| Max Building Height A.F.F.: | (1548.63' - 1513.50') | 35.13' |



1 ALT. DRIVE-THRU @ SHOPS B
SCALE: 1" = 40'-0"
- 17 Spaces
Note: Any proposed drive-through will require a staff approval.

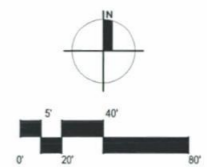


| Site Data | | |
|-----------------------|--------------|----------------------|
| Pre App. Case Number: | | 476-PA-10 |
| A.P.N.: | | 217-13-037B |
| Section: | | Section 6 T3N R5E |
| Zoning: | | C-2 |
| Net Lot Area: | | 184,665 sf (4.24 ac) |
| Building Area: | | 33,370 sf |
| | Allowed | Provided |
| Floor Area Ratio: | 147,732 sf | 33,370 sf |
| Volume Ratio: | 1,772,784 sf | 1,201,320 sf |
| Building Height: | 36'-0" | 36'-0" |
| | Required | Provided |
| Open Space: | 36,195 sf | 37,591 sf |
| Front Yard: | 20'-0" | 22'-3" |
| Side Yard: | -- | 76'-2" |
| Rear Yard: | 10'-0" | 17'-2" |
| Parking: | 112 spaces | 204 spaces |
| Parking Ratio: | | 6.1 / 1,000 |
| Accessible Parking: | 9 spaces | 10 spaces |
| Bicycle Parking: | 12 spaces | 12 spaces |



Owner: FLW 101, LLC
PO Box 182144
Coronado, CA 92178
(619) 435 - 6000
Contact: Perry Koon

Architect: Butler Design Group
5555 E. Van Buren, Ste 100
Phoenix, AZ 85008
(602) 957-1800
Contact: Korey Wilkes
Todd Lawrence



DRB APPROVED
92-DR-10
DATE 12-16-10
INITIAL KN

Gateway 101

FLW 101 LLC

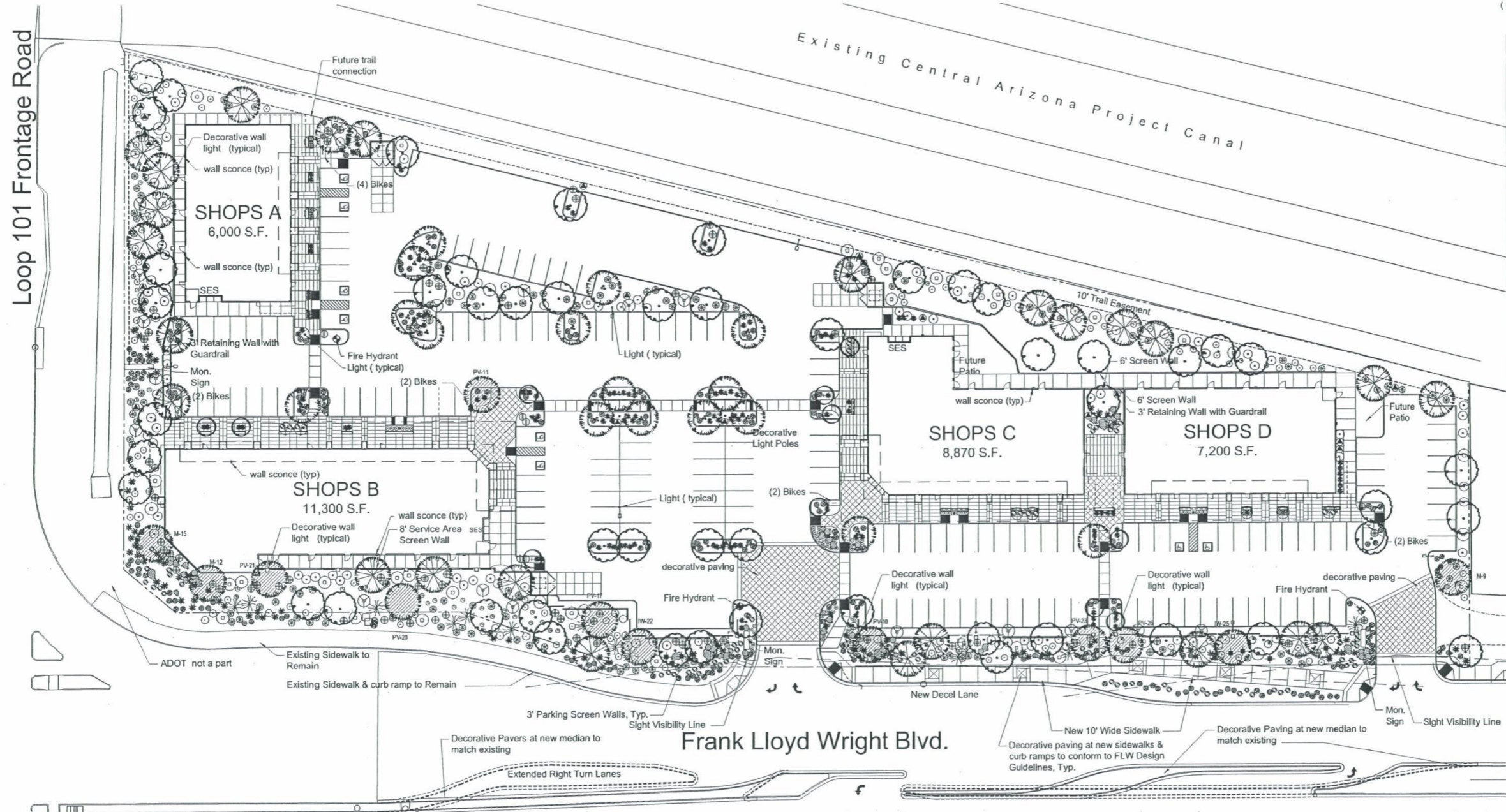
15815 E Frank Lloyd Wright Blvd.
Scottsdale, Arizona 85260

11-24-10 10086 ST-11R

92-DR-2010
2nd DATE: 11/24/10

Site Plan





LANDSCAPE LEGEND
ALL TREES TO MEET OR EXCEED A.N.A. SPECIFICATIONS (U.O.N. - UNLESS OTHERWISE NOTED)

| TREES | SIZE | CAL. |
|---|---|-----------|
| Cercidium floridum Blue Palo Verde | multi 36" box | 2.5" + |
| Carnegiea gigantea Saguaro | no holes or scars 8' spear u.o.n. | |
| Prosopis "Hybrid Phoenix" Hybrid Mesquite "Phoenix" | multi 36" box u.o.n. | 2.5" |
| Cercidium "Hybrid" "Desert Museum" | 24" box low break- std. | 1.5" |
| Caesalpinia mexicana Mexican Bird of Paradise | multi- tree form 24" box | 1.5" |
| Fouquieria splendens Ocotillo | 8' tall - 10 cane min | |
| Salvage Tree | Varies refer to tag id salvaged specimen from site | 8" + cal. |
| Carnegiea gigantea Saguaro | Salvaged from site Height and Arms varies refer to tag id | |

SHRUBS / ACCENTS 5 GAL u.o.n

| | |
|--|---------------|
| Ruellia penninsularis Ruellia | |
| Leucophyllum frutescens 'Green Cloud' Green Cloud Sage | |
| Caesalpinia Mexicana Mexican Bird of Paradise | |
| Echinocactus grusonii Golden Barrel Cactus | 10" dia. min. |
| Dasylirion wheeleri Desert Spoon | |
| Asclepias subulata Desert Milkweed | |
| Agave colorata, murpheyi, americana-marginata Mescal Ceniza, Murphy, Varigated Century Agaves equal number of species inter mix species into groupings | |
| Hesperaloe parviflora Red/Yellow Yucca | |
| Opuntia engelmannii Engelmann's Prickly Pear | 5 pad min. |
| Agave Geminiflora Twin Flower Agave | |
| Simmondsia chinensis Jojoba | |
| Leucophyllum langmaniae 'Rio Bravo' Rio Bravo Sage | |
| Vigulera deltoidea Goldeneye | |
| Encelia farinosa Brittlebush | |
| Larrea tridentata Creosote Bush | |

GROUNDCOVER 1 GAL.

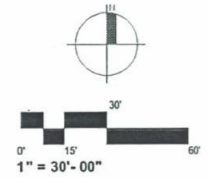
| | |
|--|---------------------------|
| Lantana montevidensis New Gold & Purple Trailing Lantana 50/50 Mix | |
| Convolvulus cneorum Bush Morning Glory | |
| Decomposed Granite - 1/2 minus Madison Gold Place in all landscape areas | |
| Surface Select Granite Boulders (bury 1/3 min. see detail) | 50% 3'x3'x3' 2700 lbs min |
| Salvaged and Stockpiled on site | 50% 4'x4'x4' 4800 lbs min |

Preliminary Landscape Plan General Notes:

The entire site will be maintained in accordance with City of Scottsdale Standards.
All trees will be 24" Box or larger.
An automatic irrigation system will be installed guaranteeing 100% coverage to all landscape areas.
Decomposed granite, 2" minimum thickness (submit sample to Landscape Architect for approval). Place in all non-river rock and non-lawn landscape
All earthwork will be done so that all water drains away from sidewalks, structures and will not impede natural drainage easements.
Structures and landscaping within a triangle measured back 10' from property line and 20' along property line on each side of the driveway entrance will be maintained at a maximum height of 3'.
All final landscape plans to meet or exceed City of Scottsdale minimum standards for quantity and type.

Landscape Calcs

Site Area: 184,665 sf (4.24 ac)
Open Space Required: 36" building height = 10% for 12' ht. + 0.4 per ea. ft over = 19.6%
184,665 sf x 0.196 = 36,195 sf
16,335 sf Provided (non-frontage open space)
37,790 sf Provided including Frontage Open Space = OK
Parking Landscape Area Required: 57,598 sf x 15% = 8,640 sf
10,876 sf Provided = OK



DRB APPROVED
92-DR-10

12-16-10
NOTE

KN INITIALS

Gateway 101

NEC Frank Lloyd Wright Blvd. & Loop 101
Scottsdale, Arizona 85260
rev. 11.24.10 10086 ST-10

Preliminary Landscape Plan

FLW 101 LLC



LASKIN & ASSOCIATES, INC.
LANDSCAPE ARCHITECTS
67 E. Weldon Ave.
Suite 230
Phoenix, Arizona 85012
P (602) 840-7771
F (602) 840-8821
www.laskindesign.com



92-DR-2010
and 11/24/10

Preliminary Landscape Plan