

Simulations
Records Packet
Photos
All Graphics (no plans)



Photo 1. Culvert west of 98th Street



Photo 2. Upstream view at culvert west of 98th Street (6ft)

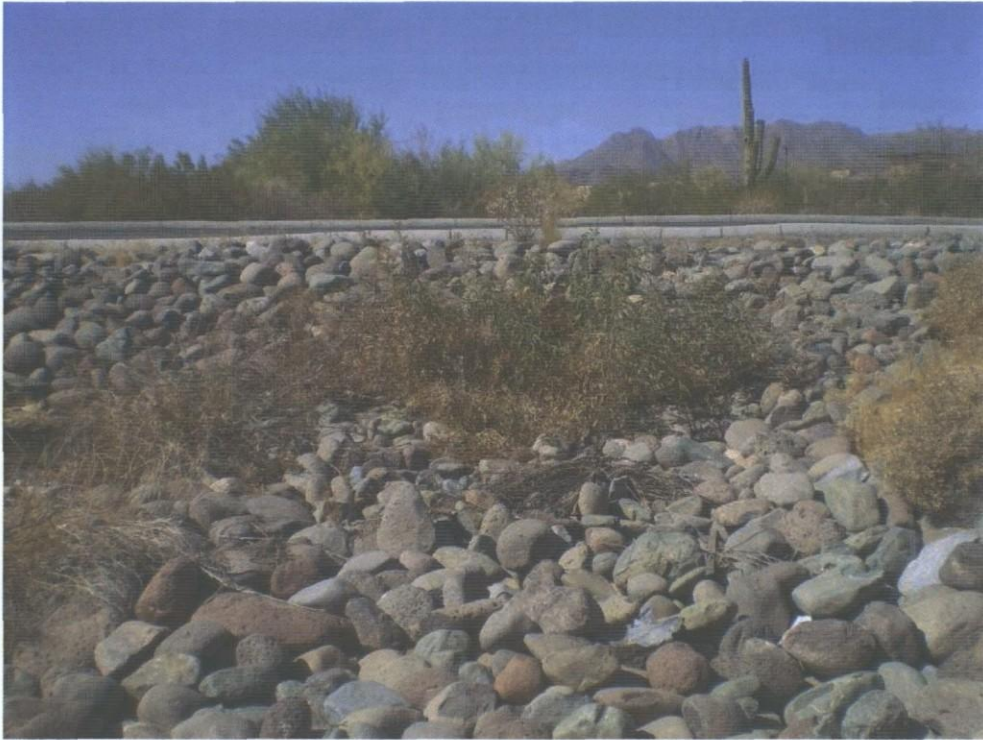


Photo 3. Upstream view at road crossing



Photo 4. Downstream view from road crossing (8 ft)



Photo 5. Upstream view of channel west of 98th Street (7 ft)



Photo 6. Downstream of channel west of 98th Street (7 ft)



Photo 7. Culvert at 98th Street & Bell Road



Photo 8. View southwest of culverts at Bell Road & 98th Street intersection



Photo 9. Upstream view at Bell Road



Photo 10 . View to north at Bell Road



Photo 11. Upstream view of Reata Pass Wash (6 ft)



Photo 12. Downstream view of Reata Pass Wash



Photo 13. Downstream view of Reata Pass Wash (9 ft)



Photo 14. Upstream view of Reata Pass Wash



Photo 15. Downstream view of small channel along Reata Pass Wash



Photo 16. Upstream view of small channels along Reata Pass Wash



Photo 17. Upstream view of Reata Pass Wash (10 ft)



Photo 18. Downstream view of Reata Pass Wash



Photo 19. Downstream view of Reata Pass Wash (8 ft)



Photo 20. Upstream view of Reata Pass Wash



Photo 21. Upstream view of channel (8 ft)



Photo 22. Downstream view of Reata Pass Wash



Photo 23. Upstream view of Reata Pass Wash (10 ft)



Photo 24. View to northwest of drainage channel parallel to Reata Pass Wash



Photo 25. Downstream view of converging drainages at Reata Pass Wash (12 ft)



Photo 26. Upstream view of converging drainages at Reata Pass Wash



Photo 27. Upstream view of Reata Pass Wash at converging point



Photo 28. Downstream view at convergence along Reata Pass Wash (12 ft)



Photo 29. Upstream view of drainage west of 98th Street (9 ft)



Photo 30. Downstream view of drainage west of 98th Street



Photo 31. Upstream view of drainage west of 98th Street (6 ft)



Photo 32. Downstream view of drainage west of 98th Street



Photo 33. Upstream view of drainage west of 98th Street (school on east side) (10 ft)



Photo 34. Downstream view of drainage west of 98th Street



Photo 35. Upstream view of drainage west of 98th Street (school on east side) (6 ft)



Photo 36. Downstream view of drainage west of 98th Street






Landscape Architecture
Environmental Compliance

Del Sol Group, LLC
649 N. 3rd Avenue
Phoenix, AZ 85003

PH: 480.642.9845
FAX: 480.642.9847
www.groupdelcsol.com

Legend

-  Photo Point
-  000 Site Planning Area
-  Proposed Preliminary Jurisdictional Delineation

NORTE DAME PREPARATORY HIGH SCHOOL

Scottsdale, AZ.



LOCATION:
Section 5, of Township 3N,
Range 5E

AERIAL DATE: 2012

SOURCE: ESRI, 2012

SHEET TITLE
PRELIMINARY
JURISDICTIONAL
MAP

SHEET NO.
P10.1



2-WM-2012
1st: 9/25/12



Notre Dame Prep. Catholic High School

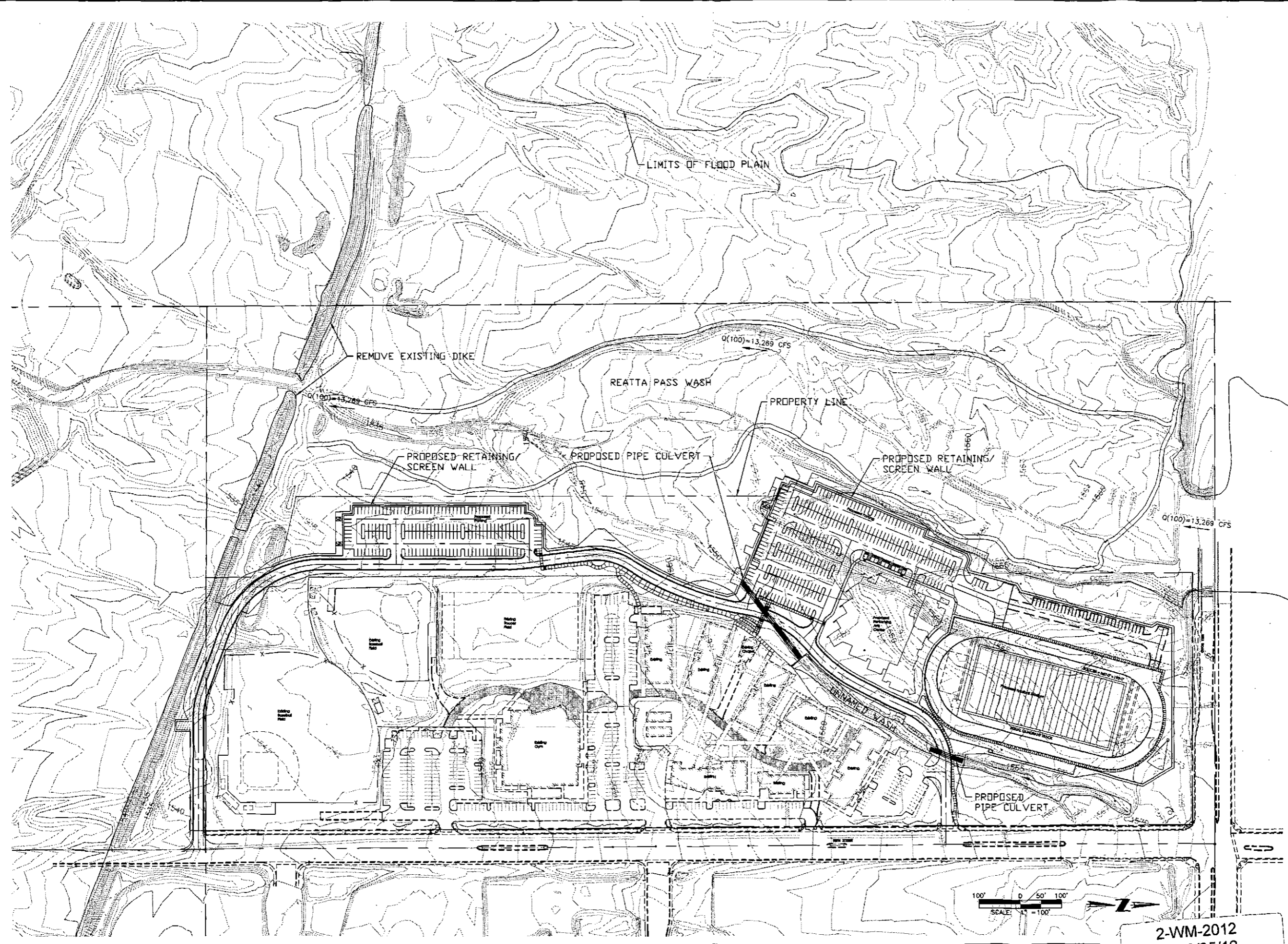
Site Location Map



13 August 2012
N:\01\0145702\graphics\exhibit\Site Location Map.indd



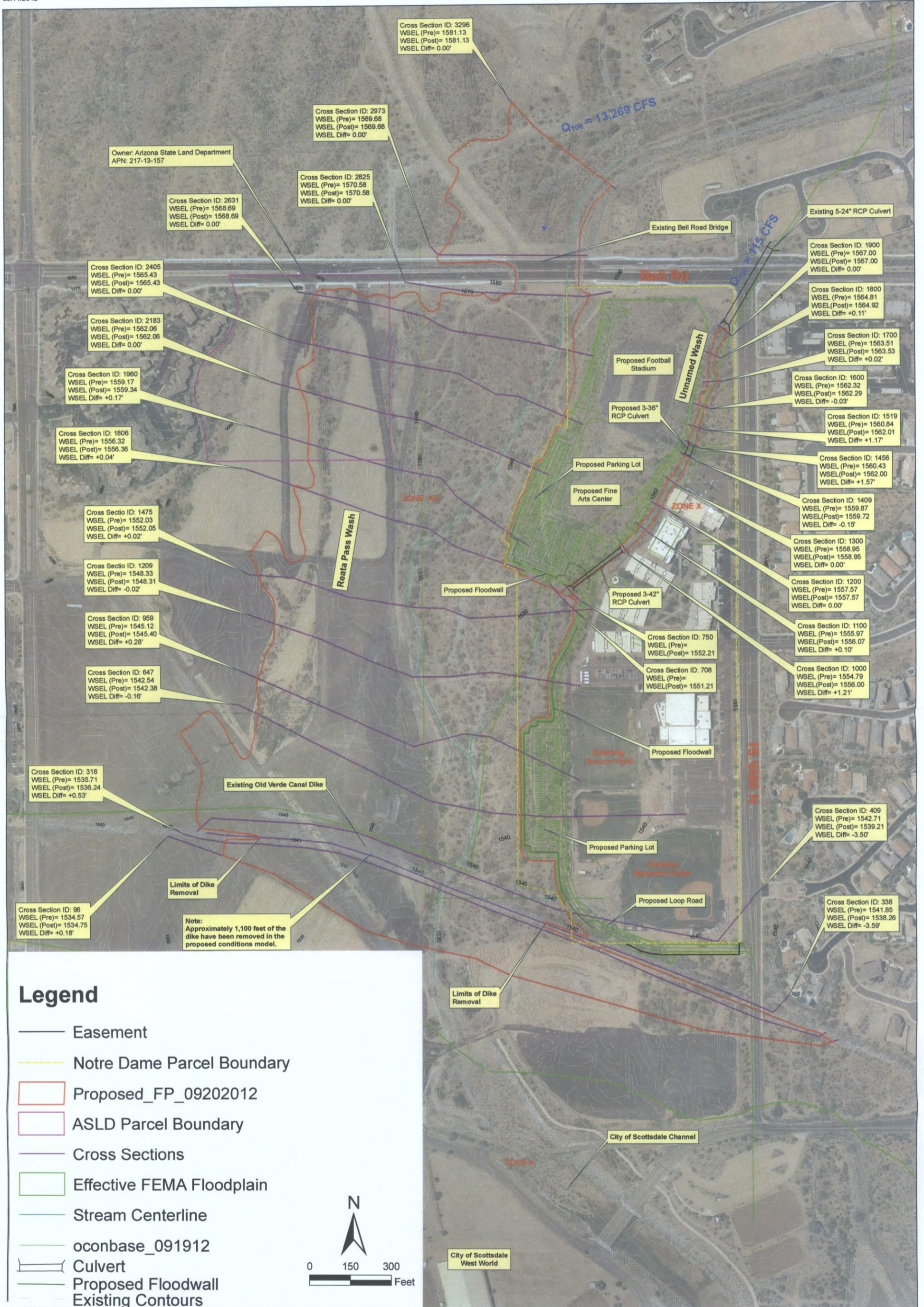
2-WM-2012
1st: 9/25/12

N:\01014570\CADD\005 SITE PLAN.dwg Mch. 21, 2012 - 2:20pm



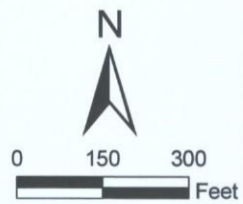
 4550 North 12th Street Phoenix, Arizona 85014 Telephone 602-284-6931 http://www.cvlci.com		DATE	
		REVISION	
NOTRE DAME PREPARATORY SCOTTSDALE, ARIZONA		NO.	
SITE PLAN		Coe & Van Loo Consultants, Inc.	
		1 OF 1	
		CVL Checked: R. WEED CVL Project #: 01-0145702 CVL File #:	

2-WM-2012
1st: 9/25/12



Legend

- Easement
- Notre Dame Parcel Boundary
- Proposed_FP_09202012
- ASLD Parcel Boundary
- Cross Sections
- Effective FEMA Floodplain
- Stream Centerline
- oconbase_091912
- Culvert
- Proposed Floodwall
- Existing Contours



PROPOSED FLOODPLAIN DELINEATIONS

4550 NORTH 12TH STREET
 PHOENIX, ARIZONA 85014
 TELEPHONE (602) 264-6831

NOTRE DAME

COE & VAN LOO
 PLANNING • ENGINEERING • LANDSCAPE ARCHITECTURE

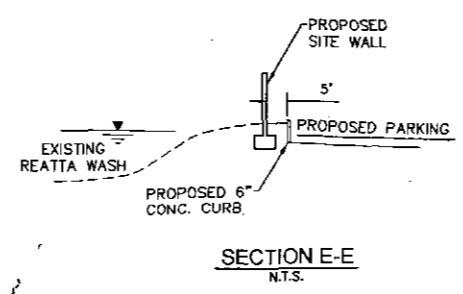
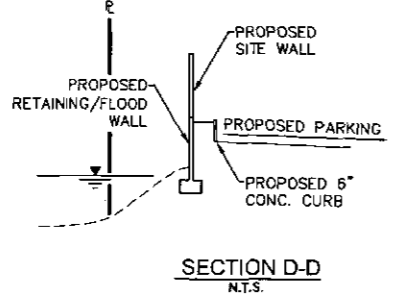
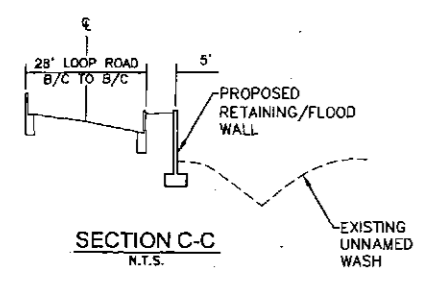
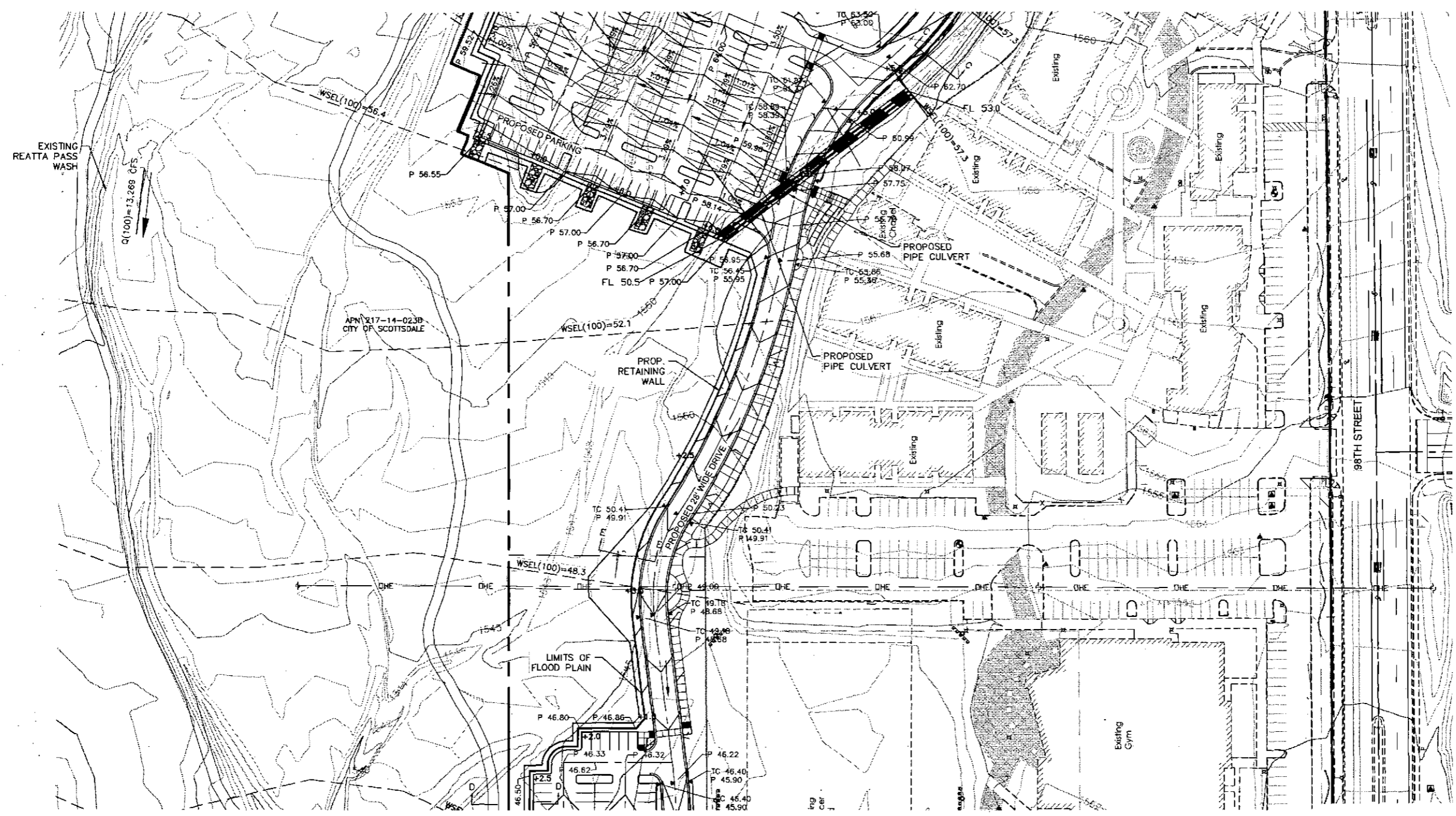
JOB NO.
 01-0145702

PLATE 2

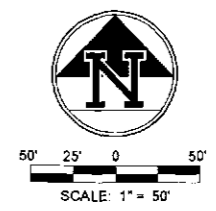
2-WM-2012
 1st: 9/25/12

NO.	REVISION	DATE

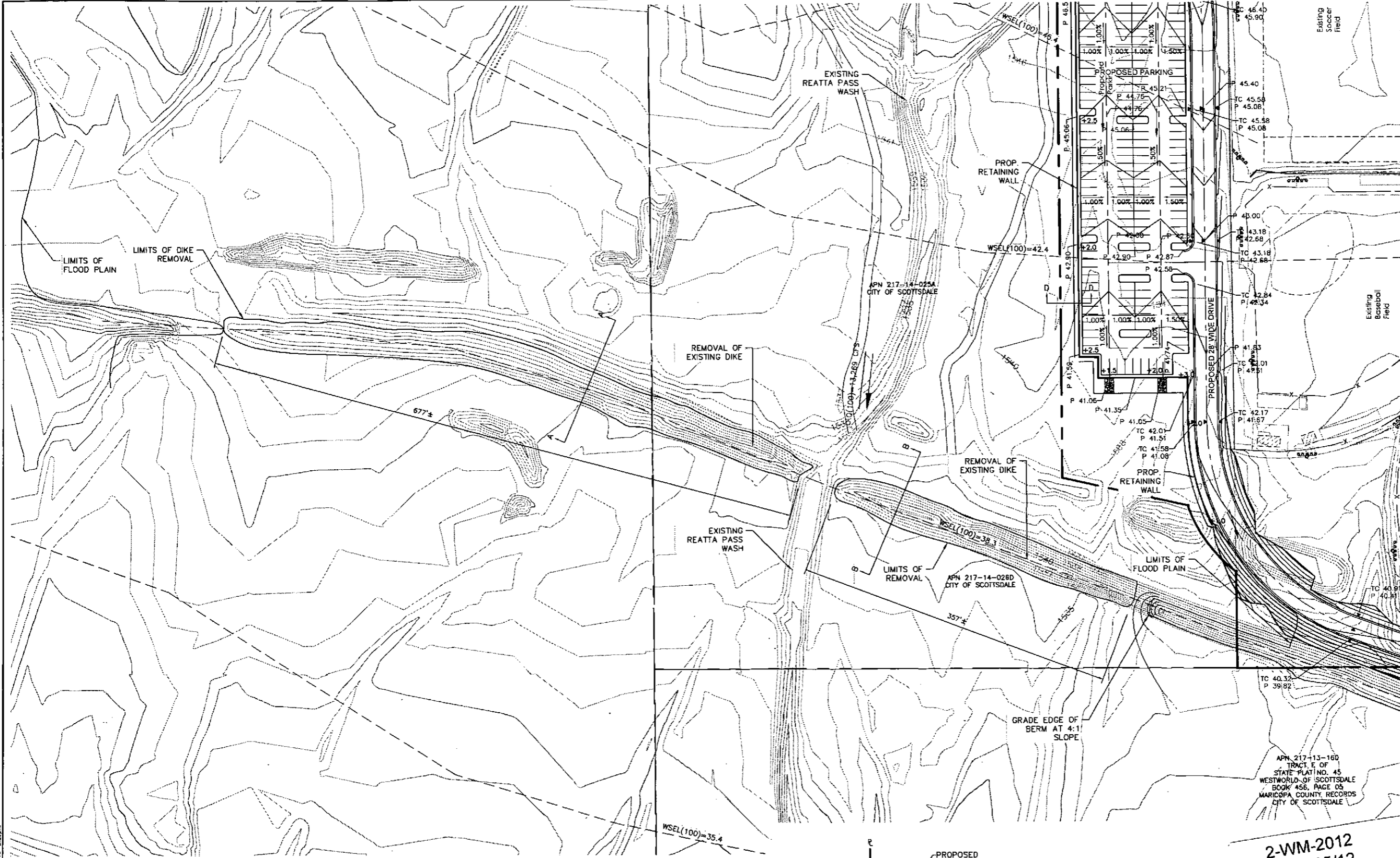
**NOTRE DAME PREPARATORY
 SCOTTSDALE, ARIZONA
 WASH MODIFICATION EXHIBIT**



2-WM-2012
 1st: 9/25/12



N:\010145702\CADD\DWG DRIVING.dwg N:\01_2012_2_26.dwg



CVL
 4550 North 12th Street
 Phoenix, Arizona 85014
 Telephone 602-264-6631
 http://www.cycl.com

NO.	REVISION	DATE

**NOTRE DAME PREPARATORY
 SCOTTSDALE, ARIZONA**

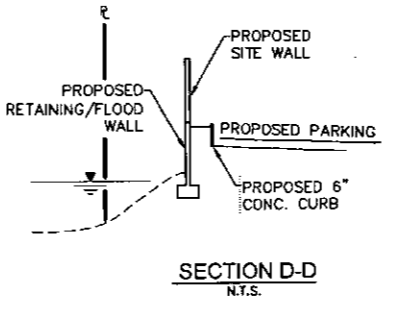
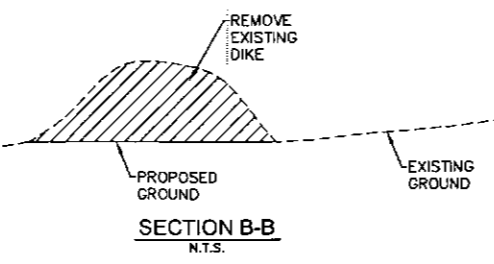
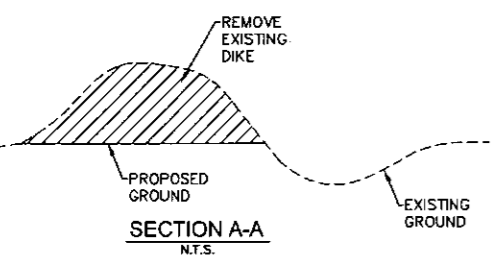
WASH MODIFICATION EXHIBIT

2-WM-2012
 1st: 9/25/12

SCALE: 1" = 50'

37325 RYAN WEED
 ARIZONA P.E.
 No. 2-31-2011

3 OF 3
 CVL Contact: R. WEED
 CVL Project #: 01-0145702
 CVL File #:



N:\010145702\CADD\CS.DRAWING.dwg Next: Sep 21, 2012 - 2:28pm