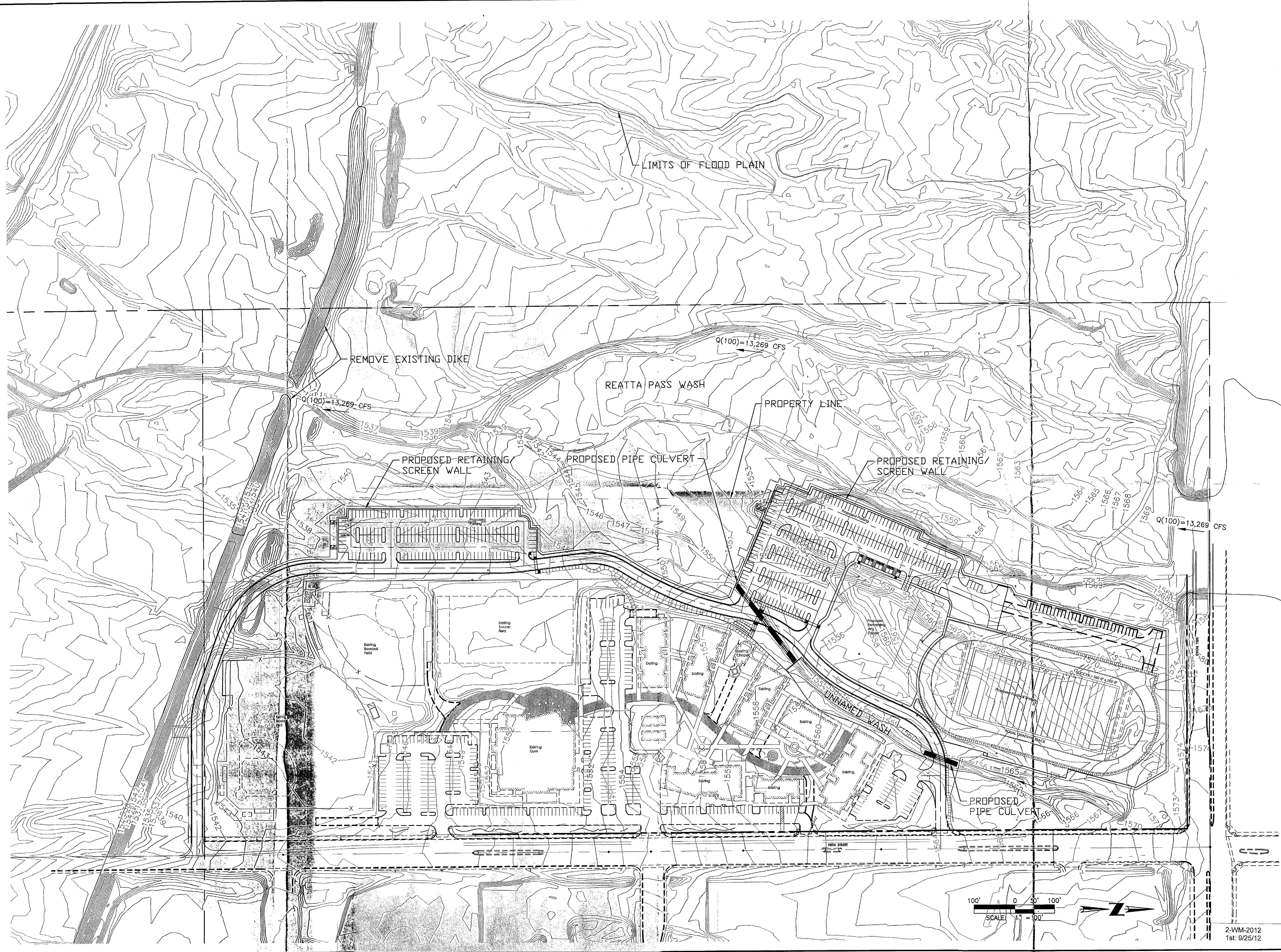


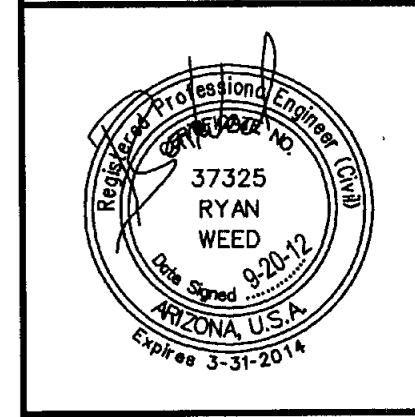
N:\010145702\CADD\DS\SITEP.dwg Neck, Sep 21, 2012 - 2:24pm



NO.	REVISION	DATE

NOTRE DAME PREPARATORY  
SCOTTSDALE, ARIZONA

SITE PLAN

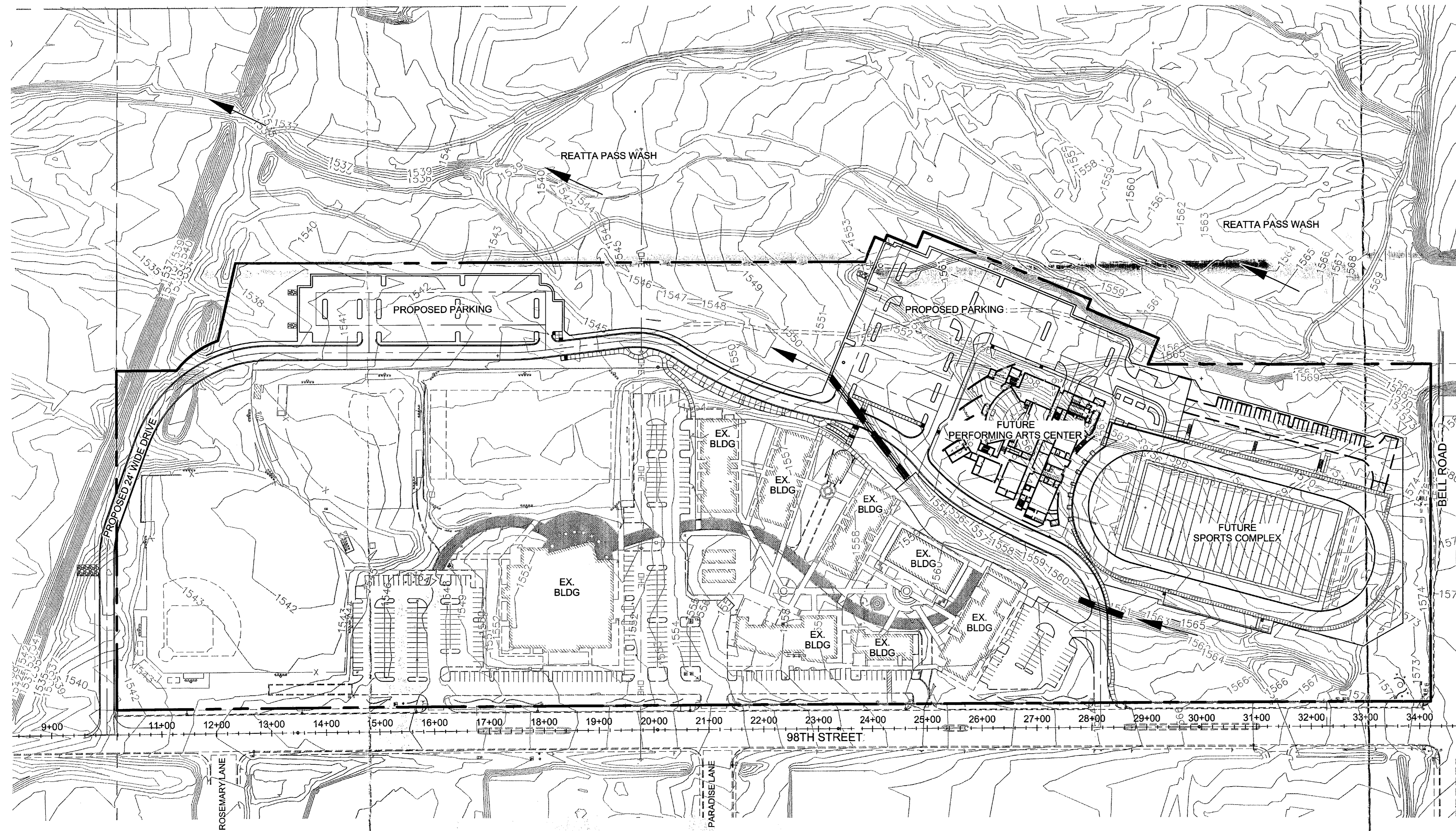


2-WM-2012  
1st: 9/25/12

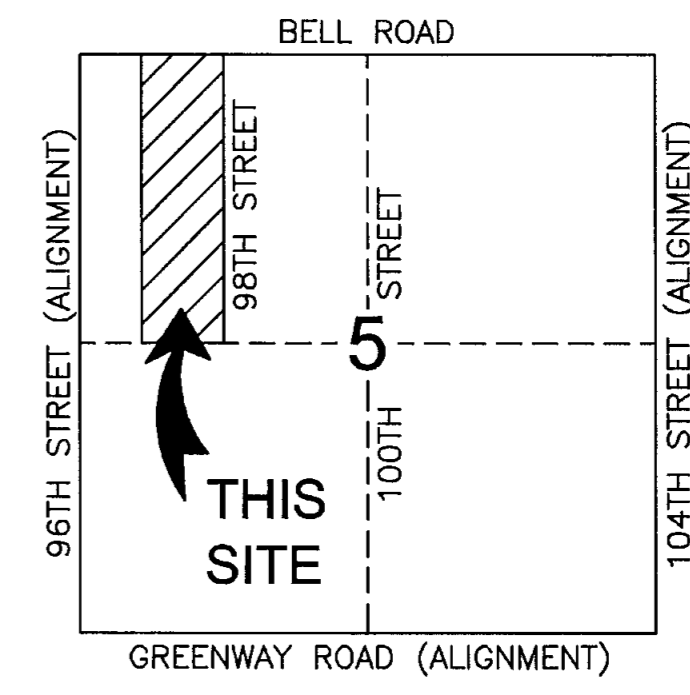
**Coe & Van Loo Consultants, Inc.**

# EXISTING TOPOGRAPHY FOR NOTRE DAME PREPARATORY HIGH SCHOOL

A PORTION OF THE NORTHWEST QUARTER OF SECTION 5, TOWNSHIP 3 NORTH, RANGE 5 EAST, OF THE GILA AND SALT RIVER BASE AND MERIDIAN, MARICOPA COUNTY, ARIZONA



NORTHWEST CORNER  
OF SECTION 5  
TOWNSHIP 3 NORTH  
RANGE 5 EAST  
NO MONUMENT FOUND



VICINITY MAP  
N.T.S.

**LAND SURVEYOR/ENGINEER**

COE & VAN LOO CONSULTANTS, INC.  
4550 N. 12TH STREET  
PHOENIX, ARIZONA 85014  
CONTACT: RYAN WEED, P.E.  
PHONE: 602.264.6831

**OWNER/DEVELOPER**

NOTRE DAME PREPARATORY  
CATHOLIC HIGH SCHOOL  
400 EAST MONROE  
PHOENIX, AZ 85004  
CONTACT: DAVID GONSALVES  
PHONE: 480.634.8200

**ARCHITECT/LANDSCAPE**

TODD AND ASSOCIATES  
4550 N. 12TH STREET  
PHOENIX, ARIZONA 85014  
CONTACT: BRAD WINKLER, RLA, ASLA  
PHONE: 602.952.8280



SCALE: 1" = 100'

NORTH QUARTER CORNER  
OF SECTION 5  
TOWNSHIP 3 NORTH  
RANGE 5 EAST  
FOUND CITY OF SCOTTSDALE  
BRASS CAP FLUSH

**CVL**  
4550 North 12th Street  
Phoenix, Arizona 85014  
Telephone 602-264-6831  
http://www.cvlci.com

**Coe & Van Loo Consultants, Inc.**

NOTRE DAME PREPARATORY  
SCOTTSDALE, ARIZONA  
EXISTING TOPOGRAPHY



N:\010145702\CADD\ext-topo.dwg, Jared Sep 17, 2012 - 8:08am

# Notre Dame Prep. Catholic High School Context Site Plan

