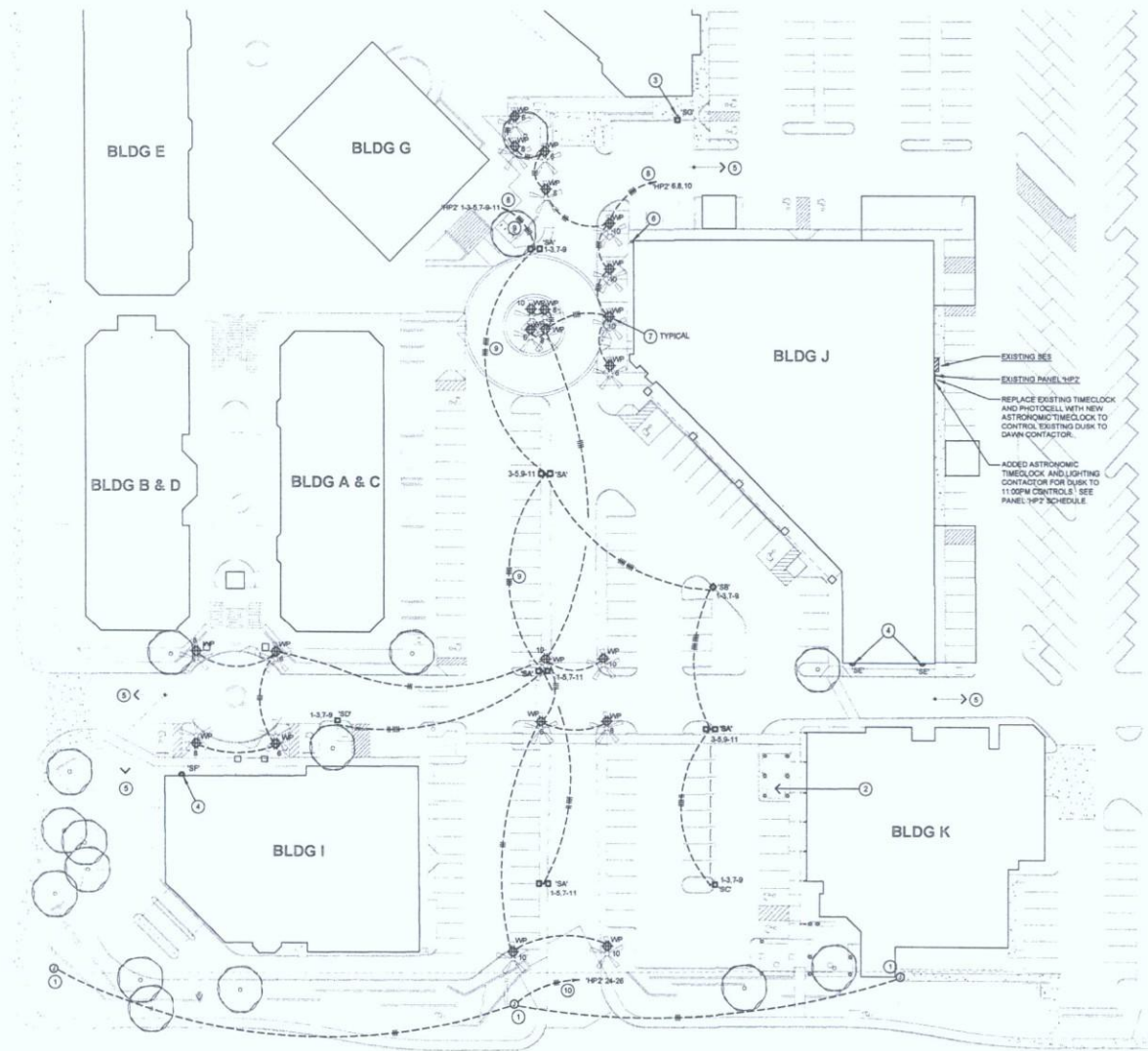


Simulations
Photos
All Graphics (no plans)

Parking Electrical



SITE PLAN GENERAL NOTES:
 1. CONTRACTOR TO PROVIDE ALL TRENCHING, BACKFILL, CONDUIT, PADS, ETC. PER THE SERVING UTILITY COMPANY SHOP DRAWINGS AND SPECIFICATIONS.
 2. MINIMUM CIRCUITRY THIS SHEET TO BE #10, 3/4" CONDUIT.

- ④ SITE PLAN KEYED NOTES:**
1. WP 2-BOX FOR CONNECTION TO MONUMENT SIGN. COORDINATE SIGN DISCONNECT TO BE PROVIDED BY SIGN MANUFACTURER.
 2. DEMO EXISTING SITE LIGHTING IN THE AREA OF CONSTRUCTION. REFER TO KEYED NOTES 5 FOR LIMITS. ALL EXISTING POLES (UNLESS NOTED TO REMAIN) (1) GRADE MOUNT LANDSCAPE UPLIGHTS, AND (5) LOUVERED DOME TOP CONCRETE BOLLARDS. COORDINATE SALVAGE WITH OWNER / PROPERTY MANAGEMENT.
 3. EXISTING SITE LIGHTING POLE TO REMAIN. REMOVE EXISTING HEAD AND REPLACE WITH NEW UNIT SHOWN. COORDINATE FUTURE MOUNT AND RE-DRILL / PATCH EXISTING POLE MOUNTING HOLES AS REQUIRED.
 4. EXISTING WALL MOUNT AREA LIGHT TO BE REMOVED AND REPLACED WITH NEW UNIT SHOWN.
 5. LIMITS OF CONSTRUCTION THIS PROJECT (UNLESS NOTED OTHERWISE). COORDINATE WITH ARCHITECTURAL PLANS.
 6. EXISTING PULS IN GRADE DISTRIBUTION / PULLBOX WITH ALL EXISTING CIRCUITS FOR THE SITE LIGHTING. THE EXISTING CIRCUITRY WOULD REMAIN FOR EXTENSION TO THE NEW DEVICES AND LAYOUTS. EXISTING CONDUIT AND CIRCUITRY MAY BE RE-USED WHERE POSSIBLE.
 7. WP, GFCI, DUPLEX RECEPTACLE AT APPROX. 8' AFO WITH WP-WHILE-IN-USE METAL COVER.
 8. ROUTE TO EXISTING GRADE PULLBOX (KEYED NOTE 6). SPLICE TO EXISTING CIRCUITRY BACK TO PANEL.
 9. 6 #6, 48 GROUND, 1" CONDUIT.
 10. 3 #6, 48 GROUND, 1" CONDUIT.

YOUNAN PROPERTIES
SITE IMPROVEMENTS
 For
Scottsdale Promenade
 7000 E Shea Boulevard
 Scottsdale, Arizona

JANUARY 30, 2014
RECORD
 DRAWING

NEWLYNN
GTAI
 GRABER TRAVIS
 ARCHITECTS INC.

602.864.0777
 4200 NORTH CENTRAL AVENUE
 PHOENIX, ARIZONA 85012
 FAX 602.864.0791
 WWW.GTAI.NET

Revisions	
1	
2	
3	
4	
5	
6	
7	
8	
9	
10	
11	
12	
13	
14	
15	
16	
17	
18	
19	
20	
21	
22	
23	
24	
25	
26	
27	
28	
29	
30	
31	
32	
33	
34	
35	
36	
37	
38	
39	
40	
41	
42	
43	
44	
45	
46	
47	
48	
49	
50	
51	
52	
53	
54	
55	
56	
57	
58	
59	
60	
61	
62	
63	
64	
65	
66	
67	
68	
69	
70	
71	
72	
73	
74	
75	
76	
77	
78	
79	
80	
81	
82	
83	
84	
85	
86	
87	
88	
89	
90	
91	
92	
93	
94	
95	
96	
97	
98	
99	
100	

Sheet Description

ELECTRICAL SITE PLAN

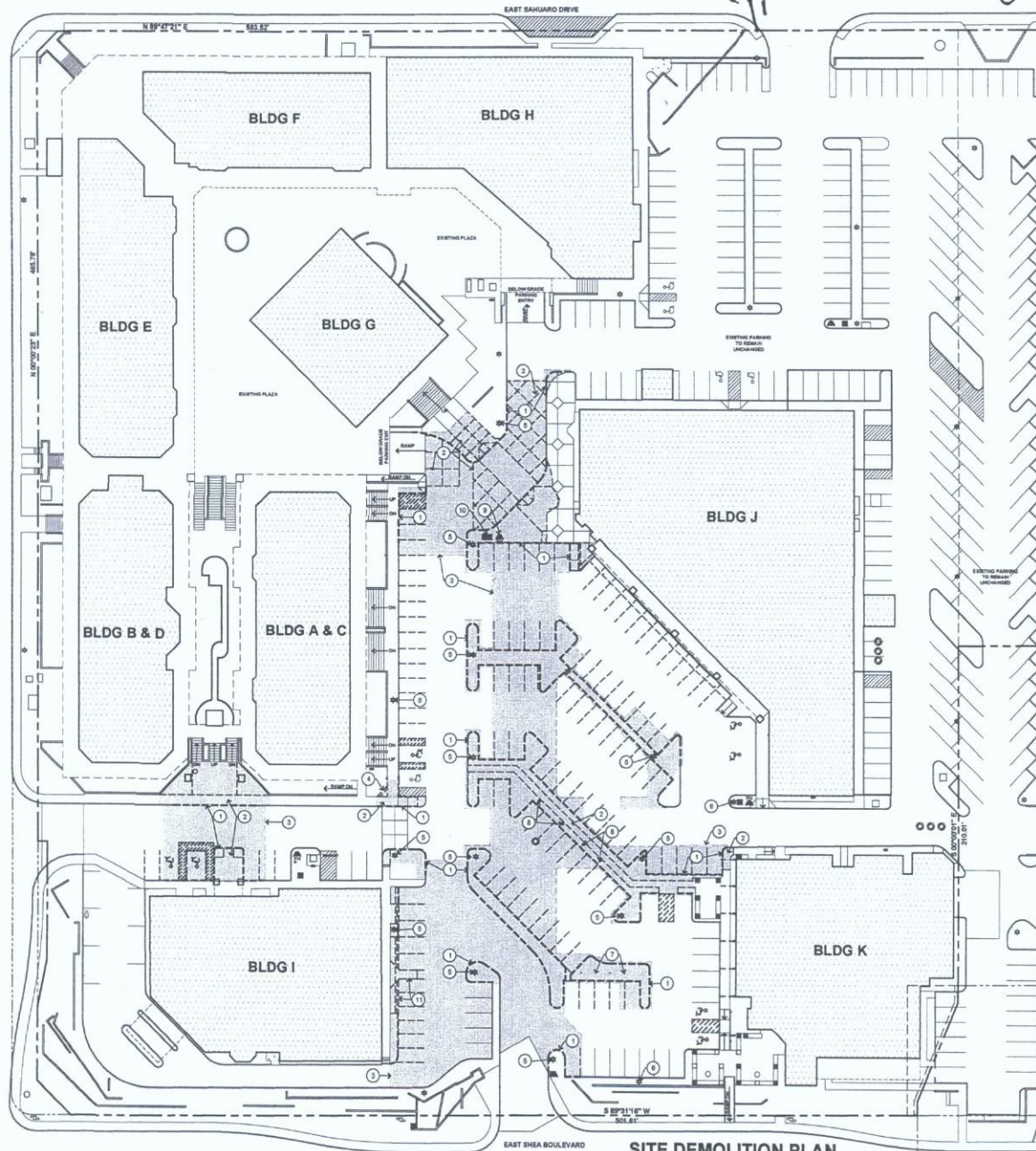
ELECTRICAL SITE PLAN
 SCALE: 1" = 30'-0"

WOODWARD ENGINEERING
 202 SOUTH BAYVIEW ROAD • SUITE 101 • TEMPE, AZ 85281
 480.884.4007 • 480.884.1000 • www.woodward-engineering.com

Sheet No. **E1.00**

6-UP-2014
5/28/2014

NORTH 75TH STREET



SITE DEMOLITION PLAN
SCALE: 1"=30'-0"

- KEY NOTES**
1. REMOVE EXISTING CONCRETE CURB, SAW-CUT AS REQUIRED
 2. REMOVE EXISTING CONCRETE PAVEMENT, SAW-CUT AS REQUIRED
 3. REMOVE EXISTING ASPHALT PAVEMENT, SAW-CUT AS REQUIRED
 4. REMOVE EXISTING FOUNDATION
 5. REMOVE EXISTING LIGHT POLE AND BASE
 6. REMOVE EXISTING LIGHT POLE, BASE TO REMAIN, CAP CONDUIT & GRIND OFF BOLTS, PATCH TOP
 7. REMOVE EXISTING FLAG POLLS
 8. REMOVE EXISTING LIGHT BOLLARDS
 9. REMOVE EXISTING FIRE HYDRANT FOR RELOCATION
 10. REMOVE EXISTING BACKFLOW PREVENTERS FOR RELOCATION
 11. REMOVE EXISTING CONCRETE CURB AND STEPS FOR REPLACEMENT, WALKWAY AT BUILDING TO REMAIN



GENERAL NOTES

A. SEE CIVIL, LANDSCAPING, AND ELECTRICAL PLANS FOR ADDITIONAL INFORMATION NOT COVERED ON THIS PLAN

B. PAVING DEMOLITION EXTENT SHOWN IS DIAGNOSTIC. FIELD CONDITIONS AND UNDERGROUND UTILITY ROUTING MAY AFFECT THE DEMOLITION EXTENT. IT IS THE CONTRACTOR'S RESPONSIBILITY TO DETERMINE THE EXACT EXTENT OF DEMOLITION.

C. LOCATE ALL UNDERGROUND UTILITIES PRIOR TO CONSTRUCTION AND TAKE PRECAUTIONS TO AVOID DAMAGE TO EXISTING UTILITIES INCLUDING UNDERGROUND IRRIGATION. ALL UTILITIES TO REMAIN IN GOOD WORKING ORDER THROUGHOUT THE PROJECT.

YOUNAN PROPERTIES
SITE IMPROVEMENTS
For
Scottsdale Promenade
7000 E Shea Boulevard
Scottsdale, Arizona

JANUARY 30, 2014
RECORD DRAWING
NEWLYNN
GTAI
GRABER TRAVIS
ARCHITECTS INC.
602.864.0777
4200 NORTH CENTRAL AVENUE
PHOENIX, ARIZONA 85012
FAX 602.864.0791
WWW.GTAI.NET

Revisions

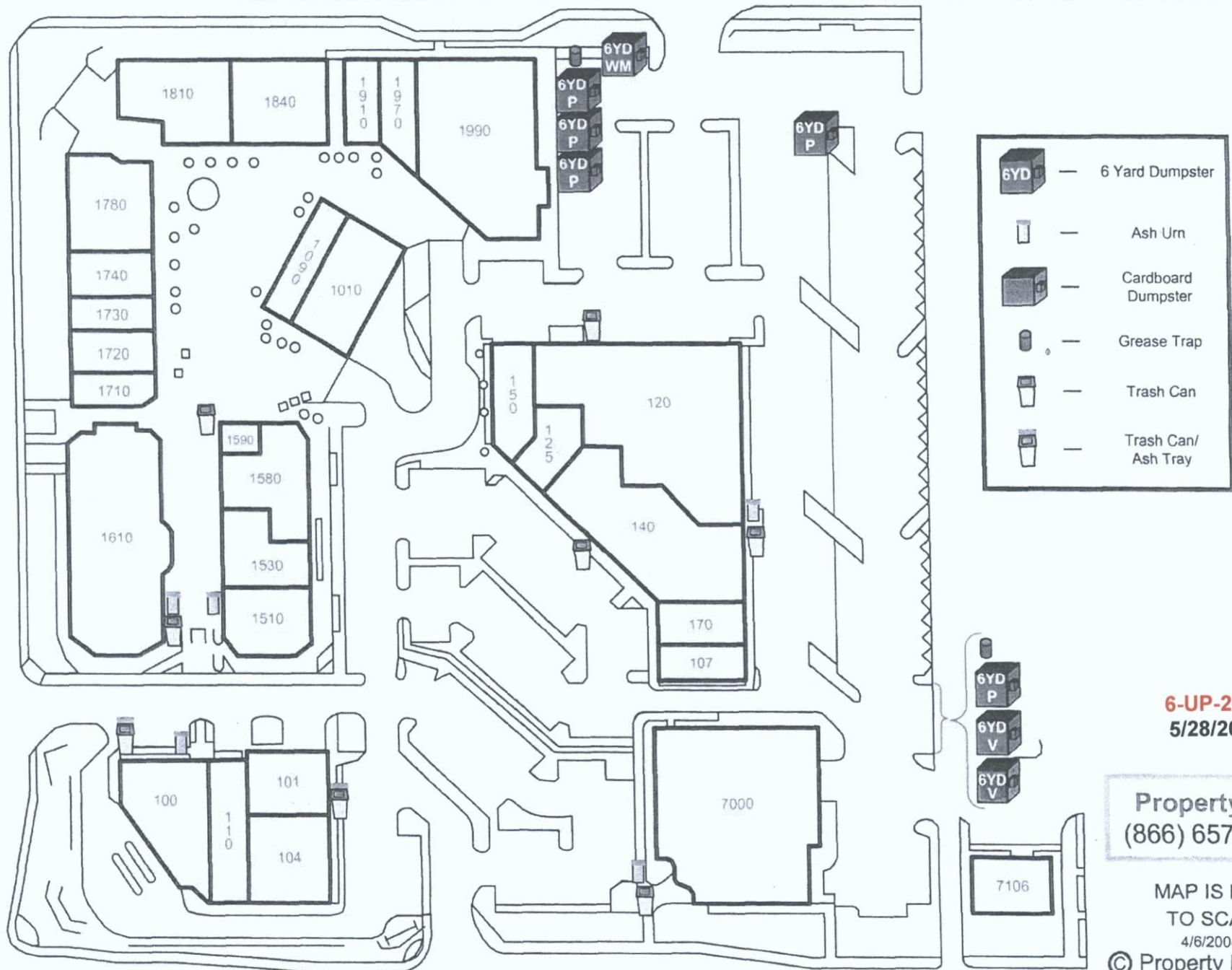
1	CITY COMMENTS 10/04/13
2	OWNER REVISION 11/13/13
3	OWNER REV-EL'S PLANTERS 12/18/13
Drawn	GKT
Checked	GKT
Date	08/20/13
Scale	1"=30'
Job No.	1324

Sheet Description
SITE DEMOLITION PLAN



Sheet No. **A101**

6-UP-2014
5/28/2014



6-UP-2014
5/28/2014

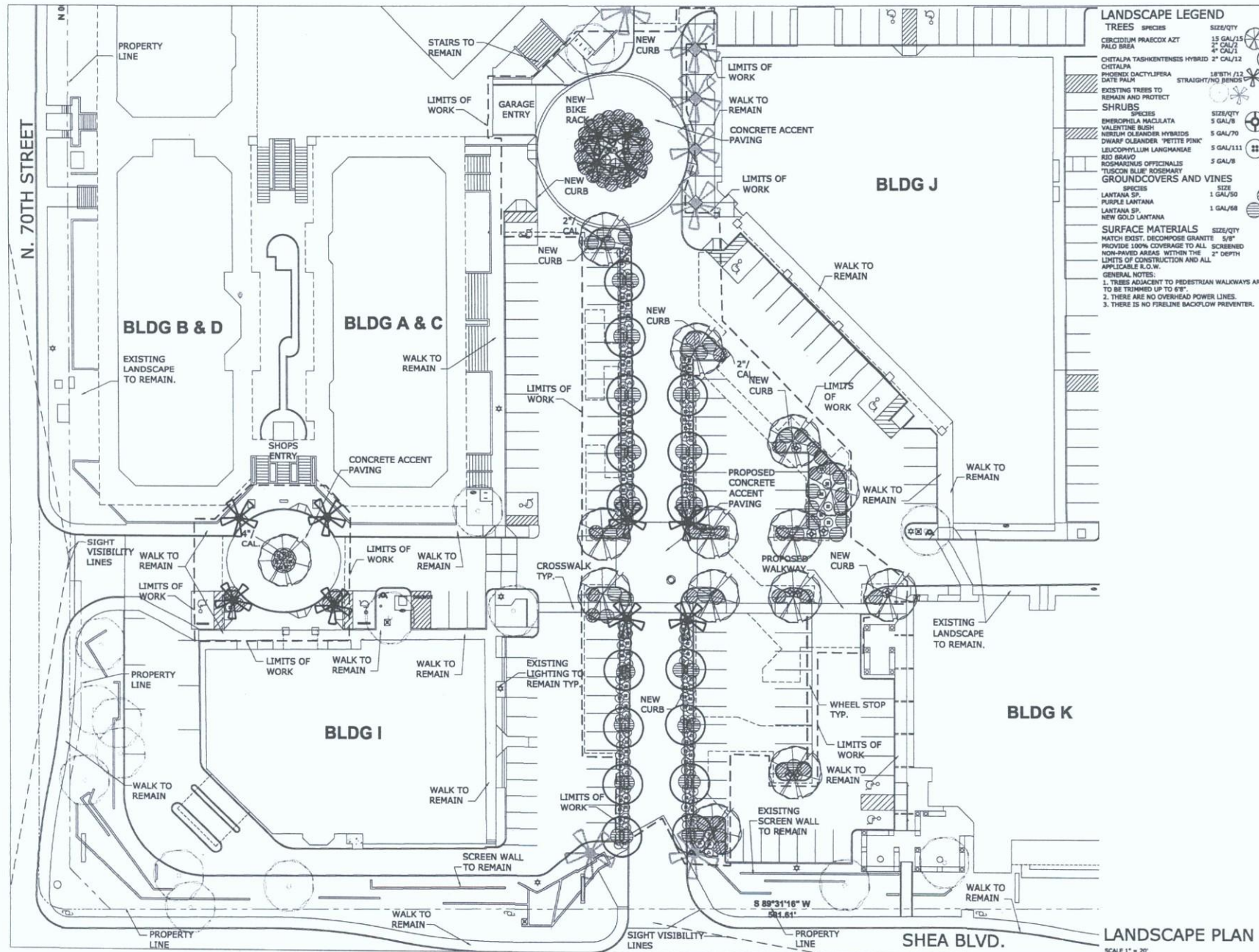
Property I.D.
(866) 657-2545

MAP IS NOT
TO SCALE

4/6/2004

© Property I.D. 2004

Land Scaping



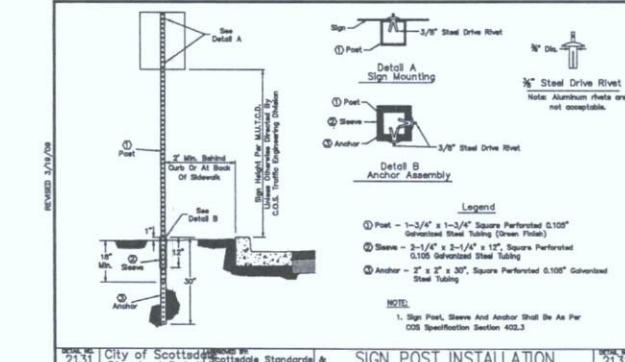
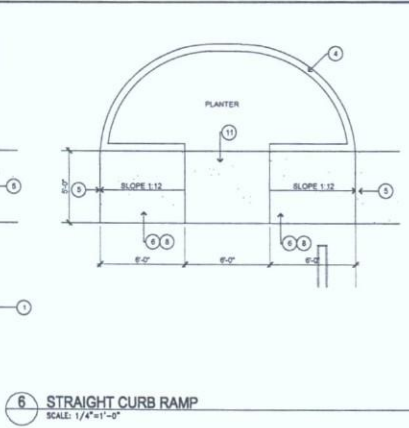
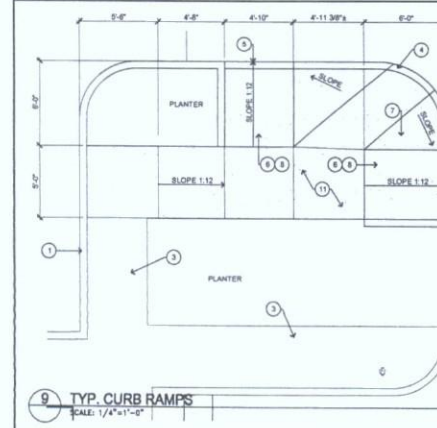
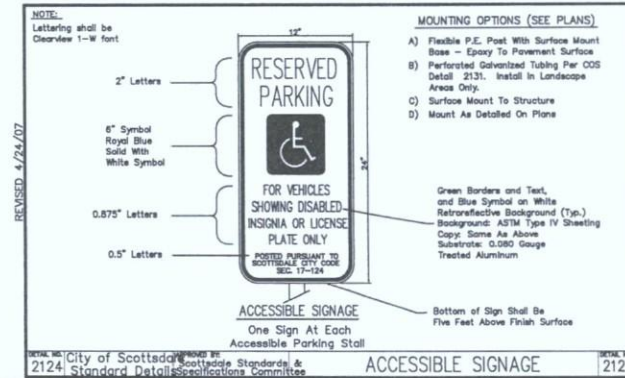
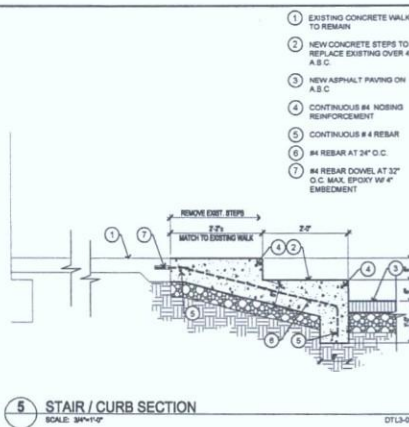
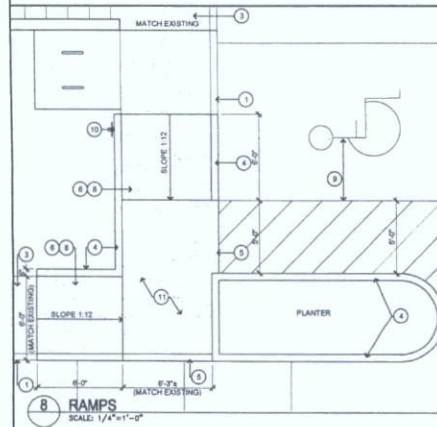
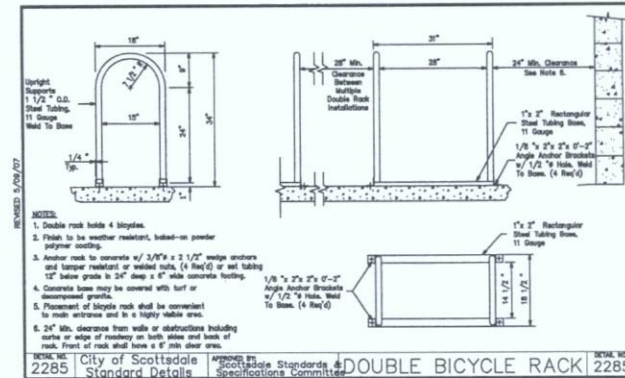
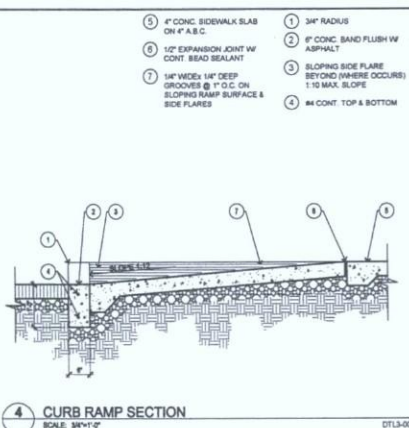
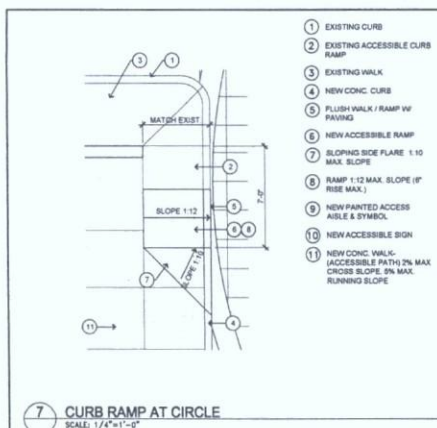
SITE DESIGN

YOUNAN PROPERTIES SITE IMPROVEMENTS FOR SCOTTSDALE PROMENADE
7000 E. SHEA BLVD SCOTTSDALE, ARIZONA

LAND. L2.5

6-UP-2014
5/28/2014

Landscaping



YOUNAN PROPERTIES
SITE IMPROVEMENTS
For
Scottsdale Promenade
7000 E Shea Boulevard
Scottsdale, Arizona

JANUARY 30, 2014
RECORD
DRAWING
NEWLYNN
GRABER TRAVIS
ARCHITECTS INC.

602.864.0777
4200 NORTH CENTRAL AVENUE
PHOENIX, ARIZONA 85012
FAX 602.664.0791
WWW.GTAL.NET

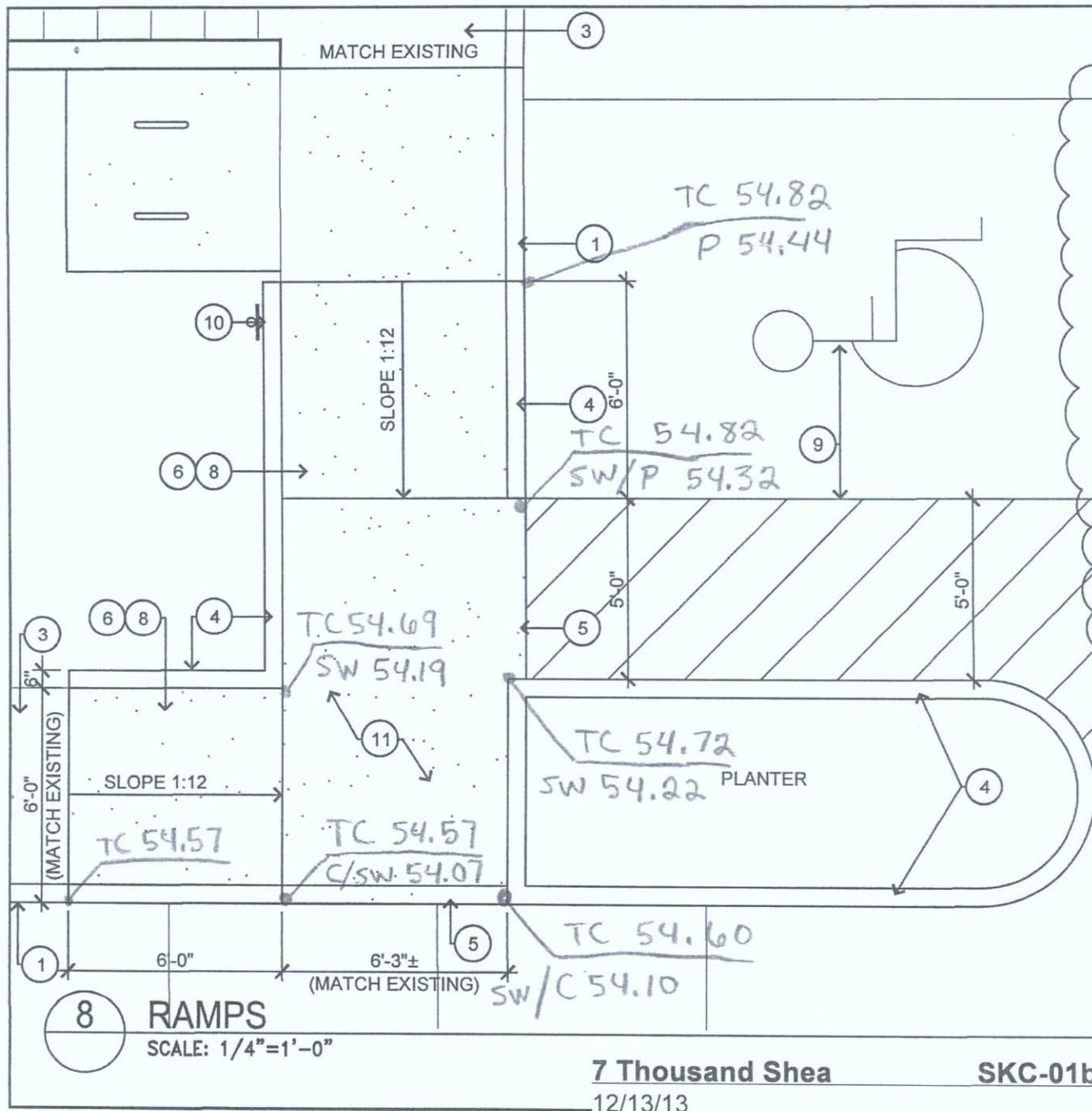
Revisions
1. OWNER COMMENTS 10/6/13
2. OWNER REVISION 11/13/13
3. OWNER REV-EL'S PLANTERS 12/19/13
Drawn: CKT
Checked: CKT
Date: 08/08/13
Scale: AS NOTED
Job No.: 1324

Sheet Description
DETAILS

Sheet No. **A8.00**

6-UP-2014
5/28/2014

Landscaping



6-UP-2014
5/28/2014

6-UP-2014
5/28/2014

Camp - Cert.



COMcheck Software Version 3.9.2
Exterior Lighting Compliance
Certificate

2012 IECC

Section 1: Project Information

Project Type: New Construction
Project Title: Exterior Lighting Zone 4 (High activity metropolitan commercial district)
Construction Site: Owner/Agent: Designer/Contractor: Doug Woodward
Woodward Engineering
200 S. 1st Ave
Tempe, AZ 85281
480-884-4027
doug@woodward-engineering.com

Section 2: Exterior Lighting Area/Surface Power Calculation

Exterior Area/Surface	Quantity	Allowed Watts (Watt)	Trickle Watts (Watt)	Allowed Watts (Watt)	Proposed Watts (Watt)
Parking area	9144 sq ft	0.15	0.00	1367	3842
Total "Trickle Watts"		0.00		1367	
Total Allowed Watts		0.15		1367	
Total Allowed Watts		0.15		1367	

* Watts/Watt are only allowed between 1000 and 1500 Watts per sq ft.

** A supplemental allowance when in 1500 Watts per sq ft may be applied based on compliance with the applicable and practice area/surface.

Section 3: Exterior Lighting Fixture Schedule

Fixture ID	Description / Lamp / Voltage / Watt / Subst	A	B	C	D	E
		Lamp	# of	Fixture	Fixture	(C X D)
		Fixture	Fixture	Watt		
Parking area (H440 50) Trickle Wattage						
LED 1 54" 100 W 120 V 100 W		1	13	275	3875	
LED 2 54" 100 W 120 V 100 W						
LED 3 54" 100 W 120 V 100 W						
LED 4 54" 100 W 120 V 100 W						
LED 5 54" 100 W 120 V 100 W						
LED 6 54" 100 W 120 V 100 W						
LED 7 54" 100 W 120 V 100 W						
LED 8 54" 100 W 120 V 100 W						
LED 9 54" 100 W 120 V 100 W						
LED 10 54" 100 W 120 V 100 W						
LED 11 54" 100 W 120 V 100 W						
LED 12 54" 100 W 120 V 100 W						
LED 13 54" 100 W 120 V 100 W						
LED 14 54" 100 W 120 V 100 W						
LED 15 54" 100 W 120 V 100 W						
LED 16 54" 100 W 120 V 100 W						
LED 17 54" 100 W 120 V 100 W						
LED 18 54" 100 W 120 V 100 W						
LED 19 54" 100 W 120 V 100 W						
LED 20 54" 100 W 120 V 100 W						
LED 21 54" 100 W 120 V 100 W						
LED 22 54" 100 W 120 V 100 W						
LED 23 54" 100 W 120 V 100 W						
LED 24 54" 100 W 120 V 100 W						
LED 25 54" 100 W 120 V 100 W						
LED 26 54" 100 W 120 V 100 W						
LED 27 54" 100 W 120 V 100 W						
LED 28 54" 100 W 120 V 100 W						
LED 29 54" 100 W 120 V 100 W						
LED 30 54" 100 W 120 V 100 W						
LED 31 54" 100 W 120 V 100 W						
LED 32 54" 100 W 120 V 100 W						
LED 33 54" 100 W 120 V 100 W						
LED 34 54" 100 W 120 V 100 W						
LED 35 54" 100 W 120 V 100 W						
LED 36 54" 100 W 120 V 100 W						
LED 37 54" 100 W 120 V 100 W						
LED 38 54" 100 W 120 V 100 W						
LED 39 54" 100 W 120 V 100 W						
LED 40 54" 100 W 120 V 100 W						
LED 41 54" 100 W 120 V 100 W						
LED 42 54" 100 W 120 V 100 W						
LED 43 54" 100 W 120 V 100 W						
LED 44 54" 100 W 120 V 100 W						
LED 45 54" 100 W 120 V 100 W						
LED 46 54" 100 W 120 V 100 W						
LED 47 54" 100 W 120 V 100 W						
LED 48 54" 100 W 120 V 100 W						
LED 49 54" 100 W 120 V 100 W						
LED 50 54" 100 W 120 V 100 W						
LED 51 54" 100 W 120 V 100 W						
LED 52 54" 100 W 120 V 100 W						
LED 53 54" 100 W 120 V 100 W						
LED 54 54" 100 W 120 V 100 W						
LED 55 54" 100 W 120 V 100 W						
LED 56 54" 100 W 120 V 100 W						
LED 57 54" 100 W 120 V 100 W						
LED 58 54" 100 W 120 V 100 W						
LED 59 54" 100 W 120 V 100 W						
LED 60 54" 100 W 120 V 100 W						
LED 61 54" 100 W 120 V 100 W						
LED 62 54" 100 W 120 V 100 W						
LED 63 54" 100 W 120 V 100 W						
LED 64 54" 100 W 120 V 100 W						
LED 65 54" 100 W 120 V 100 W						
LED 66 54" 100 W 120 V 100 W						
LED 67 54" 100 W 120 V 100 W						
LED 68 54" 100 W 120 V 100 W						
LED 69 54" 100 W 120 V 100 W						
LED 70 54" 100 W 120 V 100 W						
LED 71 54" 100 W 120 V 100 W						
LED 72 54" 100 W 120 V 100 W						
LED 73 54" 100 W 120 V 100 W						
LED 74 54" 100 W 120 V 100 W						
LED 75 54" 100 W 120 V 100 W						
LED 76 54" 100 W 120 V 100 W						
LED 77 54" 100 W 120 V 100 W						
LED 78 54" 100 W 120 V 100 W						
LED 79 54" 100 W 120 V 100 W						
LED 80 54" 100 W 120 V 100 W						
LED 81 54" 100 W 120 V 100 W						
LED 82 54" 100 W 120 V 100 W						
LED 83 54" 100 W 120 V 100 W						
LED 84 54" 100 W 120 V 100 W						
LED 85 54" 100 W 120 V 100 W						
LED 86 54" 100 W 120 V 100 W						
LED 87 54" 100 W 120 V 100 W						
LED 88 54" 100 W 120 V 100 W						
LED 89 54" 100 W 120 V 100 W						
LED 90 54" 100 W 120 V 100 W						
LED 91 54" 100 W 120 V 100 W						
LED 92 54" 100 W 120 V 100 W						
LED 93 54" 100 W 120 V 100 W						
LED 94 54" 100 W 120 V 100 W						
LED 95 54" 100 W 120 V 100 W						
LED 96 54" 100 W 120 V 100 W						
LED 97 54" 100 W 120 V 100 W						
LED 98 54" 100 W 120 V 100 W						
LED 99 54" 100 W 120 V 100 W						
LED 100 54" 100 W 120 V 100 W						
LED 101 54" 100 W 120 V 100 W						
LED 102 54" 100 W 120 V 100 W						
LED 103 54" 100 W 120 V 100 W						
LED 104 54" 100 W 120 V 100 W						
LED 105 54" 100 W 120 V 100 W						
LED 106 54" 100 W 120 V 100 W						
LED 107 54" 100 W 120 V 100 W						
LED 108 54" 100 W 120 V 100 W						
LED 109 54" 100 W 120 V 100 W						
LED 110 54" 100 W 120 V 100 W						
LED 111 54" 100 W 120 V 100 W						
LED 112 54" 100 W 120 V 100 W						
LED 113 54" 100 W 120 V 100 W						
LED 114 54" 100 W 120 V 100 W						
LED 115 54" 100 W 120 V 100 W						
LED 116 54" 100 W 120 V 100 W						
LED 117 54" 100 W 120 V 100 W						
LED 118 54" 100 W 120 V 100 W						
LED 119 54" 100 W 120 V 100 W						
LED 120 54" 100 W 120 V 100 W						
LED 121 54" 100 W 120 V 100 W						
LED 122 54" 100 W 120 V 100 W						
LED 123 54" 100 W 120 V 100 W						
LED 124 54" 100 W 120 V 100 W						
LED 125 54" 100 W 120 V 100 W						
LED 126 54" 100 W 120 V 100 W						
LED 127 54" 100 W 120 V 100 W						
LED 128 54" 100 W 120 V 100 W						
LED 129 54" 100 W 120 V 100 W						
LED 130 54" 100 W 120 V 100 W						
LED 131 54" 100 W 120 V 100 W						
LED 132 54" 100 W 120 V 100 W						
LED 133 54" 100 W 120 V 100 W						
LED 134 54" 100 W 120 V 100 W						
LED 135 54" 100 W 120 V 100 W						
LED 136 54" 100 W 120 V 100 W						
LED 137 54" 100 W 120 V 100 W						
LED 138 54" 100 W 120 V 100 W						
LED 139 54" 100 W 120 V 100 W						
LED 140 54" 100 W 120 V 100 W						
LED 141 54" 100 W 120 V 100 W						
LED 142 54" 100 W 120 V 100 W						
LED 143 54" 100 W 120 V 100 W						
LED 144 54" 100 W 120 V 100 W						
LED 145 54" 100 W 120 V 100 W						
LED 146 54" 100 W 120 V 100 W						
LED 147 54" 100 W 120 V 100 W						
LED 148 54" 100 W 120 V 100 W						
LED 149 54" 100 W 120 V 100 W						
LED 150 54" 100 W 120 V 100 W						
LED 151 54" 100 W 120 V 100 W						
LED 152 54" 100 W 120 V 100 W						
LED 153 54" 100 W 120 V 100 W						
LED 154 54" 100 W 120 V 100 W						
LED 155 54" 100 W 120 V 100 W						
LED 156 54" 100 W 120 V 100 W						
LED 157 54" 100 W 120 V 100 W						
LED 158 54" 100 W 120 V 100 W						
LED 159 54" 100 W 120 V 100 W						
LED 160 54" 100 W 120 V 100 W						
LED 161 54" 100 W 120 V 100 W						
LED 162 54" 100 W 120 V 100 W						
LED 163 54" 100 W 120 V 100 W						
LED 164 54" 100 W 120 V 100 W						
LED 165 54" 100 W 120 V 100 W						
LED 166 54" 100 W 120 V 100 W						
LED 167 54" 100 W 120 V 100 W						
LED 168 54" 100 W 120 V 100 W						
LED 169 54" 100 W 120 V 100 W						
LED 170 54" 100 W 120 V 100 W						
LED 171 54" 100 W 120 V 100 W						
LED 172 54" 100 W 120 V 100 W						
LED 173 54" 100 W 120 V 100 W						
LED 174 54" 100 W 120 V 100 W						
LED 175 54" 100 W 120 V 100 W						
LED 176 54" 100 W 120 V 100 W						
LED 177 54" 100 W 120 V 100 W						
LED 178 54" 100 W 120 V 100 W						
LED 179 54" 100 W 120 V 100 W						
LED 180 54" 100 W 120 V 100 W						
LED 181 54" 100 W 120 V 100 W						
LED 182 54" 100 W 120 V 100 W						
LED 183 54" 100 W 120 V 100 W						
LED 184 54" 100 W 120 V 100 W						
LED 185 54" 100 W 120 V 100 W						
LED 186 54" 100 W 120 V 100 W						
LED 187 54" 100 W 120 V 100 W						
LED 188 54" 100 W 120 V 100 W						
LED 189 54" 100 W 120 V 100 W						
LED 190 54" 100 W 120 V 100 W						
LED 191 54" 100 W 120 V 100 W						
LED 192 54" 100 W 120 V 100 W						
LED 193 54" 100 W 120 V 100 W						
LED 194 54" 100 W 120 V 100 W						
LED 195 54" 100 W 120 V 100 W						
LED 196 54" 100 W 120 V 100 W						
LED 197 54" 100 W 120 V 100 W						
LED 198 54" 100 W 120 V 100 W						
LED 199 54" 100 W 120 V 100 W						
LED 200 54" 100 W 120 V 100 W						
LED 201 54" 100 W 120 V 100 W						
LED 202 54" 100 W 120 V 100 W						
LED 203 54" 100 W 120 V 100 W						
LED 204 54" 100 W 120 V 100 W						
LED 205 54" 100 W 120 V 100 W						
LED 206 54" 100 W 120 V 100 W						
LED 207 54" 100 W 120 V 100 W						
LED 208 54" 100 W 120 V 100 W						
LED 209 54" 100 W 120 V 100 W						
LED 210 54" 100 W 120 V 100 W						
LED 211 54" 100 W 120 V 100 W						
LED 212 54" 100 W 120 V 100 W						
LED 213 54" 100 W 120 V 100 W						
LED 214 54" 100 W 120 V 100 W						
LED 215 54" 100 W 120 V 100 W						
LED 216 54" 100 W 120 V 100 W						

Section 4: Requirements Checklist

- Lighting Wattage:
1. Other than non-ventilation areas, total proposed watts must be less than or equal to total allowed watts. Across all install areas, total proposed watts must be less than or equal to total allowed watts.
 2. Controls, Switching, and Wiring:
 3. All exterior lighting must be controlled by a switch that is not a standard switch. The switch must be labeled "Exterior Lighting".
 4. Lighting equipment for dusk-to-dawn operation is controlled by an astronomical time switch or photoeye.

Project Title: Exterior Lighting Zone 4 (High activity metropolitan commercial district)
Date: 8/30/2013
Page 1 of 2

5. All exterior lighting must be controlled by a switch that is not a standard switch. The switch must be labeled "Exterior Lighting".
6. All exterior lighting must be controlled by a switch that is not a standard switch. The switch must be labeled "Exterior Lighting".

Section 5: Compliance Statement

Compliance Statement: The proposed exterior lighting design represented in this document is consistent with the building plans, specifications and other calculations submitted with this permit application. The proposed lighting system has been designed to meet the 2012 IECC requirements in COMcheck Version 3.9.2 and to comply with the regulatory requirements in the International Code.

Doug Woodard PE
Name: Title: Signature: Date: 08/30/2013

Project Title: Exterior Lighting Zone 4 (High activity metropolitan commercial district)
Date: 8/30/2013
Page 2 of 2

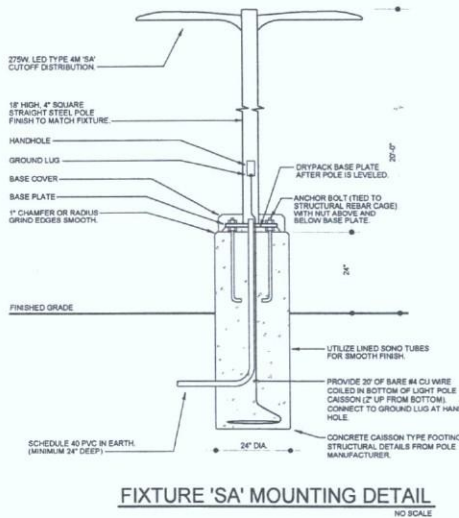
EXISTING SQUARE D:

PANELBOARD SCHEDULE					'HP2'		LOCATION: SEE POWER PLAN		
VOLT: 120/208V, 3Ø, 4W					MTG: SURFACE		FULLY RATED TO K.A.I.C.		
MAINS: 200A M.L.O.					TYPE: BOLT-ON W/ GROUND BUS		NEMA RATING: 3R		
CIRCUIT / BREAKER DESCRIPTION					CIRCUIT / BREAKER DESCRIPTION				
PARKING LOT POLES (HALF THE DRIVERS EACH HEAD)					EXISTING LTO BUILDING 1 EXTERIOR				
PARKING LOT POLES (HALF THE DRIVERS EACH HEAD)					PALM TREE RECEPTACLES				
EXISTING PARKING LOT POLES					SPARE				
EXISTING NORTH PARKING LOT POLES					EXISTING LIGHTING CONTROLLER				
EXISTING EAST PARKING LOT POLES					SPARE				
EXISTING IRRIGATION CONTROLLER					EXISTING LIGHTING				
SPACE					SIGNAGE				
SPACE					SPACE				
SPACE					SPACE				
SPACE					SPACE				
SPACE					SPACE				
SPACE					SPACE				
SPACE					SPACE				
SPACE					SPACE				
SPACE					SPACE				
SPACE					SPACE				
SPACE					SPACE				
SPACE					SPACE				
SPACE					SPACE				
SPACE					SPACE				
SPACE					SPACE				
SPACE					SPACE				
SPACE					SPACE				
SPACE					SPACE				
SPACE					SPACE				
SPACE					SPACE				
SPACE					SPACE				
SPACE					SPACE				
SPACE					SPACE				
SPACE					SPACE				
SPACE					SPACE				
SPACE					SPACE				
SPACE					SPACE				
SPACE					SPACE				
SPACE					SPACE				
SPACE					SPACE				
SPACE					SPACE				
SPACE					SPACE				
SPACE					SPACE				
SPACE					SPACE				
SPACE					SPACE				
SPACE					SPACE				
SPACE					SPACE				
SPACE					SPACE				
SPACE					SPACE				
SPACE					SPACE				
SPACE					SPACE				
SPACE					SPACE				
SPACE					SPACE				
SPACE					SPACE				
SPACE					SPACE				
SPACE					SPACE				
SPACE					SPACE				
SPACE					SPACE				
SPACE					SPACE				
SPACE					SPACE				
SPACE					SPACE				
SPACE					SPACE				
SPACE					SPACE				
SPACE					SPACE				
SPACE					SPACE				
SPACE					SPACE				
SPACE					SPACE				
SPACE					SPACE				
SPACE					SPACE				
SPACE					SPACE				
SPACE					SPACE				
SPACE					SPACE				
SPACE					SPACE				
SPACE					SPACE				
SPACE					SPACE				
SPACE					SPACE				
SPACE					SPACE				
SPACE					SPACE				
SPACE					SPACE				
SPACE					SPACE				
SPACE					SPACE				
SPACE					SPACE				
SPACE					SPACE				
SPACE					SPACE				
SPACE					SPACE				
SPACE					SPACE				
SPACE					SPACE				
SPACE					SPACE				
SPACE					SPACE				
SPACE					SPACE				
SPACE					SPACE				
SPACE					SPACE				
SPACE					SPACE				
SPACE					SPACE				
SPACE					SPACE				
SPACE					SPACE				
SPACE					SPACE				
SPACE					SPACE				
SPACE					SPACE				
SPACE					SPACE				
SPACE					SPACE				
SPACE					SPACE				
SPACE					SPACE				
SPACE					SPACE				
SPACE					SPACE				
SPACE					SPACE				
SPACE					SPACE				
SPACE					SPACE				
SPACE					SPACE				
SPACE					SPACE				
SPACE					SPACE				
SPACE					SPACE				
SPACE					SPACE				
SPACE					SPACE				
SPACE					SPACE				
SPACE					SPACE				
SPACE					SPACE				
SPACE					SPACE				
SPACE					SPACE				
SPACE					SPACE				
SPACE					SPACE				
SPACE					SPACE				
SPACE					SPACE				
SPACE					SPACE				
SPACE					SPACE				
SPACE					SPACE				
SPACE					SPACE				
SPACE					SPACE				
SPACE					SPACE				
SPACE					SPACE				
SPACE					SPACE				
SPACE					SPACE				
SPACE					SPACE				
SPACE					SPACE				
SPACE					SPACE				
SPACE					SPACE				
SPACE					SPACE				
SPACE					SPACE				
SPACE					SPACE				
SPACE					SPACE				
SPACE					SPACE				
SPACE					SPACE				
SPACE					SPACE				
SPACE					SPACE				
SPACE					SPACE				
SPACE					SPACE				
SPACE					SPACE				
SPACE					SPACE				
SPACE					SPACE				
SPACE					SPACE				
SPACE					SPACE				
SPACE					SPACE				
SPACE					SPACE				
SPACE					SPACE				
SPACE					SPACE				
SPACE					SPACE				
SPACE					SPACE				
SPACE					SPACE				
SPACE					SPACE				
SPACE					SPACE				
SPACE					SPACE				
SPACE					SPACE				
SPACE					SPACE				
SPACE					SPACE				
SPACE					SPACE				
SPACE					SPACE				
SPACE					SPACE				
SPACE					SPACE				
SPACE					SPACE				
SPACE					SPACE				
SPACE					SPACE				
SPACE					SPACE				
SPACE					SPACE				
SPACE					SPACE				
SPACE					SPACE				
SPACE					SPACE				
SPACE					SPACE				
SPACE					SPACE				
SPACE					SPACE				
SPACE					SPACE				
SPACE					SPACE				
SPACE					SPACE				
SPACE					SPACE				
SPACE					SPACE				
SPACE					SPACE				
SPACE					SPACE				
SPACE					SPACE				
SPACE					SPACE				
SPACE					SPACE				
SPACE					SPACE				
SPACE					SPACE				
SPACE					SPACE				
SPACE					SPACE				

ELECTRICAL SPECIFICATIONS

- PART 1.00 - GENERAL**
- 1.01 SCHEDULE AND COORDINATE WORK WITH THAT OF OTHER DIVISIONS AND SECTIONS.
 - 1.02 GUARANTEE IN WRITING THE ELECTRICAL INSTALLATION AND ALL WORK UNDER THIS SECTION, FOR A PERIOD OF ONE YEAR FROM THE DATE OF FINAL ACCEPTANCE BY THE OWNER AGAINST ALL EVIDENCE OF IMPERFECT WORKMANSHIP OR FAILURE OR MALFUNCTION OF MATERIALS.
- PART 2.00 - PRODUCTS**
- 2.01 MATERIALS AND EQUIPMENT
 - A. MATERIAL FURNISHED UNDER THIS CONTRACT, UNLESS OTHERWISE NOTED, SHALL BE NEW, FREE FROM DEFECTS AND SHALL CONFORM WITH THE STANDARDS OF MATERIALS NOT LISTED, THAT ARE REQUIRED TO COMPLETE THE ELECTRICAL INSTALLATION. SHALL BE OF FIRST CLASS QUALITY FOR USE INTENDED.
 - B. VOLTAGE, AMPERE, AND OTHER RATINGS OF EQUIPMENT SHALL BE BUT NOT EXCEED THE RATING OF THE EQUIPMENT. DISCONNECT SWITCHES SHALL BE PROPERLY RATED AND SUITABLE FOR VOLTAGE, AND AMPERE RATING OF THE LOAD.
 - C. THE DRAWINGS GENERALLY INDICATE THE RACEWAY SIZE, THE NUMBER, SIZE, AND INSULATION TYPE OF CONDUCTORS TO BE PROVIDED AND INSTALLED, WHERE THESE ITEMS DO NOT MEET MINIMUM APPLICABLE CODES, FOR EQUIPMENT BEING SERVED, COMPLY AS REQUIRED AT NO ADDITIONAL COST.
 - 2.02 RACEWAYS
 - A. GALVANIZED RIGID CONDUIT (RIG) INCLUDING ELBOWS AND COUPLINGS.
 - B. INTERMEDIATE METAL CONDUIT (IMC) INCLUDING ELBOWS AND COUPLINGS.
 - C. ELECTRIC METALLIC TUBING (EMT) WITH FITTINGS OF PRESTRESSED STEEL OR MALLEABLE IRON, COMPRESSION TYPE WITH INSULATED THROATS.
 - D. FLEXIBLE METAL CONDUIT (FLEX) WITH FITTINGS OF PRESTRESSED STEEL OR MALLEABLE IRON, COMPRESSION TYPE WITH INSULATED THROATS.
 - E. RIGID NON-METALLIC CONDUIT (PVC) U.L. LABELED SCHEDULE 40 P.V.C.
 - F. TYPE MC CABLE (METAL CLAD CABLE) WITH FULL SIZED INSULATED GROUND.
 - 2.03 OUTLET PULL AND JUNCTION BOXES: INCLUDE PLASTER RINGS, COVERS, BAR HANGERS AND NO SEALS AS REQUIRED.
 - 2.04 CONDUCTORS, UNLESS OTHERWISE NOTED, WIRE AND CABLE SHALL BE: SOFT DRAWN, ANNEALED COPPER, WIRE SIZES NO. 8 AND LARGER AND CONDUCTORS SERVING MOTORS AND SUBJECT TO VIBRATIONS SHALL BE STRANDED CABLE. INSULATION TO BE THINWALL, JACKETED 90C INSULATED WIRE, THROUGH NO. 8 LARGER SIZES TYPE THIN OR XHHW/INSULATION. PROVIDE WIRE COLOR IDENTIFICATION: NEUTRAL WIRE - WHITE, LIVE WIRE - BLACK, RED, BLUE ON 120/208 VOLT SYSTEM, NEUTRAL WIRE - GREY, LIVE WIRE - BROWN, CHARGE YELLOW ON 277/480 VOLT SYSTEM, GROUND - GREEN.
 - 2.05 ADDED PANELS TO BE PANELBOARDS - LOAD CENTERS ARE NOT ACCEPTABLE UNLESS SPECIFICALLY APPROVED.
 - 2.06 SERVICE ENTRANCE AND DISTRIBUTION EQUIPMENT: EXISTING, NOTIFY PER PLANS.
 - 2.07 SAFETY SWITCHES: FUSED, HEAVY DUTY, HORSEPOWER RATED.
 - 2.08 STARTERS, CONTACTORS AND CONTROL DEVICES: PROVIDE AS SHOWN AND AS REQUIRED BY CODE, FURNISH COMPLETE WITH PILOT LIGHTS, AUXILIARY CONTACTS, PUSH BUTTONS, HAND-OFF-ON SWITCHES, CONTROL DEVICES, AND OVERLOAD RELAYS THERMAL OVERLOADS TO BE SIZED PER MANUFACTURER'S RECOMMENDATIONS. AMBENT COMPENSATE ALL HEATERS EXPOSED TO HIGH TEMPERATURE OR INSTALLATION OUTSIDE.
 - 2.09 DRY TYPE TRANSFORMER: TRANSFORMERS TO HAVE 200 DEGREES C INSULATION WITH A TEMPERATURE RISE NOT TO EXCEED 150 DEGREES C. FOR 480V TRANSFORMERS AND LARGER, TEMPERATURE RISE NOT TO EXCEED 115 DEGREES C. FOR 300V TRANSFORMERS AND SMALLER. TEMPERATURE RISE BASED ON A 40 DEGREES C AMBIENT AND 30 DEGREES C HOT SPOT. ALL TRANSFORMERS TO HAVE CORE AND COIL MOUNTED ON VIBRATION MOUNTING RAILS. THE CORE AND COILS SHALL BE GROUND TO THE FRAME BY MEANS OF A FLEXIBLE GROUNDING STRAP. MINIMUM (1) 2 1/2" ABOVE NORMAL TAPS, AND (2) 12% BELOW NORMAL TAPS. TRANSFORMERS TO MEET NEMA TPL-1.
 - 2.10 PROVIDE BLACK LAMINATED NAMEPLATES WITH 3/16" HIGH WHITE ENGRAVED LETTERS ON PANELS, SWITCHBOARDS, MAINS AND SUBMANS, DISTRIBUTION EQUIPMENT, REMOTE SAFETY SWITCHES, CIRCUIT BREAKERS, TIME SWITCHES, CONTACTORS AND STARTERS.
 - 2.11 WIRING DEVICES
 - A. HUBBELL OR COMPARABLE LEVITON OR BRYANT AND WHITE IN COLOR, OR AS NOTED ON DRAWINGS. 15 AMP DEVICES ALLOWED ONLY WHEN SPECIFICALLY NOTED ON ELECTRICAL CONSTRUCTION DRAWINGS.
 - B. TOGGLE SWITCHES: SINGLE POLE - HUBBELL 1221-20A, 120/277V, THREE WAY - HUBBELL 1223-20A, 120/277V, FOUR WAY - HUBBELL 1224-20A, 120/277V.
 - C. RECEPTACLES: DUPLEX GROUNDING TYPE, SPECIFICATION GRADE, 125 VOLT, 20 AMPERES, SINGLE PHASE, HUBBELL NO. 5262 OR COMPARABLE.
 - D. GROUND FAULT INTERRUPTER TYPE RECEPTACLE, DUPLEX GROUNDING TYPE, SPECIFICATION GRADE, 125 VOLT, 20 AMPERES, SINGLE PHASE, 5-6A GROUND TRIP, FEED THROUGH CONSTRUCTION.
 - E. DEVICE PLATES: LEXAN (STYRENE), SMOOTH, FINISH IN WHITE (OR AS NOTED ON PLANS), PROVIDE NAMEPLATES OR ENGRAVED LETTERING ON DEVICE PLATES FOR ALL SPECIAL PURPOSE RECEPTACLES AND SWITCHES. MULTI-GANG OUTLET PLATES SHALL BE USED FOR MULTI-GANG BOXES.
 - 2.12 DIMMER SWITCHES: LUTRON, LINEAR SLIDE TYPE DIMMERS, DIMMERS ARE 1500 WATT UNLESS NOTED OTHERWISE ON DRAWINGS, 800 WATT, 120/240, 1500 WATT, 120/240, 1500 WATT, 120/240, 1500 WATT, 120/240.
 - 2.14 PROVIDE LIGHTING FIXTURES PER SCHEDULE WITH ALL PARTS INCLUDING PLASTER FRAMES FOR RECESSED FIXTURES AND FITTINGS NECESSARY TO COMPLETELY AND PROPERLY INSTALL FIXTURES, INCANDESCENT LAMPS BY O.E. SYLVANIA, OR WESTINGHOUSE, 120 VOLT, EXTENDED LIFE LAMPS, FLUORESCENT LAMPS BY G.E., SYLVANIA, PHILIPS OR WESTINGHOUSE, MINIMUM OF 80 WATTAGE AND TYPES AS REQUIRED BY FIXTURE.
- PART 3.00 - EXECUTION**
- 3.01 THE ENTIRE ELECTRICAL INSTALLATION SHALL BE MADE IN A NEAT, APPROVED WORKMANLIKE, FINISHED AND SAFE MANNER. INSPECT AND MAKE TIGHT ALL CONNECTIONS FOR ALL EQUIPMENT, INCLUDING FACTORY CONNECTIONS. TORQUE ALL CONNECTIONS PER MANUFACTURER'S RECOMMENDATIONS. ALL LIGHTING FIXTURES INSTALLED DURING CONSTRUCTION SHALL BE RELAMPED WITH NEW LAMPS JUST PRIOR TO FINAL ACCEPTANCE OF THE PROJECT. INSTALL SEISMIC RESTRAINT DEVICES FOR ALL CEILING MOUNTED EQUIPMENT, I.E. FLUORESCENT LAY-IN FIXTURES (GRIP CLIPS AND #12 BLACK WIRES FROM FIXTURE CORNERS TO STRUCTURES).
 - 3.02 RACEWAYS
 - A. INSTALL COMPLETE RACEWAY SYSTEMS FOR ALL ELECTRICAL CONDUCTORS, INCLUDING TELEPHONE, SIGNAL, CONTROL, AND OTHER SYSTEMS.
 - B. UNLESS OTHERWISE NOTED, INSTALL ALL RACEWAYS CONCEALED WHERE IT IS NOT FEASIBLE TO CONCEAL RACEWAYS, INSTALL AS DIRECTED BY ARCHITECT.
 - C. INSTALL EXPOSED RACEWAYS TO RUN PARALLEL OR AT RIGHT ANGLES TO STRUCTURAL BUILDING LINES WITH NEAT BENDS AND NEATLY OFFSET INTO TERMINATIONS.
 - D. IN EMPTY RACEWAY PROVIDE AND INSTALL A NO. 14 NYLON DRAG LINE.
 - E. INSTALL RACEWAYS WITH APPROVED HEAVY DUTY SUPPORTS, STRAPS, HANGERS, CONNECTORS, AND COUPLINGS AS REQUIRED TO MAINTAIN AN APPROVED INSTALLATION.
 - F. DO NOT INSTALL CONDUIT RACEWAY IN CONCRETE SLABS.
 - G. SUPPORT UNDERGROUND DUCT BANKS ON PREFORMED, NONMETALLIC SEPARATORS.
 - H. MINIMUM CONDUIT SIZE TO BE 3/4" U.O.
 - I. ALL CONDUITS TO BE SUPPLIED WITH EQUIPMENT GROUNDING CONDUCTOR PROPERLY SIZED PER CODE.
 - J. 501 GALVANIZED RIGID CONDUIT (RIG): ALL RACEWAYS SHALL BE GFC, EXCEPT AS NOTED OR SHOWN, CONDUIT, ELBOWS, STANDARD COUPLINGS SHALL BE HOT DIPPED GALVANIZED RIGID STEEL, IF PARTITIONS OR WALLS ARE SOLID CONCRETE OR ARE GROUTED SOLID WITH CONCRETE OR MORTAR, RIGID STEEL CONDUIT SHALL BE USED.
 - K. 504 INTERMEDIATE METAL CONDUIT (IMC): IMC RACEWAY AND APPROVED FITTINGS WHERE PERMITTED BY APPLICABLE CODES AND REGULATIONS MAY BE USED IN USE OF RIGID STEEL CONDUIT, WHERE INSTALLED ABOVE FINISH GRADE AND ABOVE CONCRETE SLABS OR GRADE.
 - 3.05 ELECTRIC METALLIC TUBING (EMT): EMT MAY BE USED WHERE CONCEALED IN AREAS ABOVE CEILING, PURRED SPACES, PARTITIONS OR WALLS. ALSO MAY BE EXPOSED WHEN NOT IN HAZARDOUS AREAS, AREAS SUBJECT TO PHYSICAL DAMAGE, OR WHEN DIRECTLY EXPOSED TO RAIN OR WASH-DOWN.
 - 3.06 FLEXIBLE METAL CONDUIT (FLEX): USE FLEXIBLE CONDUITS FOR CONNECTIONS TO MOTORS, WHERE SUBJECT TO MOVEMENT OR VIBRATION, AND LUGS TO BE EXPOSED TO MOISTURE OR OILS.
 - 3.07 RIGID NONMETALLIC CONDUIT: PVC SCHEDULE 40 MAY BE INSTALLED FOR DIRECT BURIAL RACEWAYS WHERE INSTALLED WITH MINIMUM COVERAGE PER NEC TABLE 300.4.
 - 3.08 OUTLET, PULL AND JUNCTION BOXES
 - A. UNLESS OTHERWISE SHOWN OR AS DIRECTED PRIOR TO INSTALLATION, OUTLET BOXES SHALL GENERALLY BE PLACED AT THE FOLLOWING HEIGHTS, CENTER OF BOX TO FINISHED FLOOR LEVEL:
 - B. WALL SWITCHES: 4'
 - C. CONVENIENCE RECEPTACLES: 18" (OR 4" ABOVE CORNERS) AND/OR AS NOTED (SIMILAR TYPE OUTLETS SHALL BE MOUNTED AT SAME HEIGHT IN EACH AREA). GROUNDING PIN AT TOP.
 - D. 150 CONDUCTORS (COPPER ONLY).
 - A. USE SPECIFIED COLOR SCHEDULE FOR ALL WIRING, WHERE LARGE CONDUCTORS ARE NOT AVAILABLE IN COLORS, IDENTIFY WITH PERMANENT COLORED TAPE AT ALL TERMINATIONS, JUNCTION BOXES, ETC. COLOR CODING PER NEC.
 - B. MAKE TAPS, JOINTS, SPICES, AND OTHER CONNECTIONS WITH FIXTURE, CONNECTORS.
 - C. DO NOT INSTALL WIRE OR TAPE ON ANY PART OF RACEWAY SYSTEM IS COMPLETELY CLEAN AND DRY AND FREE OF ALL FOREIGN MATERIALS. LUBRICATE AS REQUIRED WITH SPECIFIED LUBRICANT.
 - D. MINIMUM CONDUCTOR SIZE TO BE #12 CU THINW.
 - 3.10 LIGHTING FIXTURES
 - A. LEAVE FIXTURES AND LAMPS CLEAN OF ALL DIRT, DUST, GREASE SPOTS AND DEBRIS AND ALL GLASS, PLASTIC AND OTHER COMPONENTS, UNSCRATCHED AND UNBROKEN.
 - B. FIT AND ADJUST ALL FIXTURES WHERE STRUCTURAL CONDITIONS, PARTITIONS, FURNITURE, SHELVING, AND AIR CONDITIONING DIFFUSERS, INTERFERE WITH THE LIGHTING FIXTURES AT LOCATIONS SHOWN, NOTIFY ARCHITECT IN WRITING AND RELOCATE AT NO ADDITIONAL COST AS DIRECTED.
 - C. FIXTURES WITH FINISH TRIM OR LENS FRAMES SHALL BE GASKETED AND BAPFLED TO PREVENT LIGHT LEAKS. INSTALL SO THAT NO LIGHT LEAKS EXIST.
 - D. FIXTURES MOUNTED DIRECTLY ON COMBUSTIBLE LOW-DENSITY CEILING SHALL BE UL APPROVAL FOR THIS CONDITION AND BE PLAINLY MARKED SO INDICATING.
 - 3.11 GROUNDING FOR DISTRIBUTION EQUIPMENT, EQUIPMENT AND MATERIALS WITH ELECTRICAL CONNECTIONS, SECONDARY WIRING OF TRANSFORMER, TRANSFORMER ENCLOSURES, ELECTRIC MOTOR FRAMES, ELECTRIC RACEWAY AND RELATED EQUIPMENT, SHALL BE EFFECTIVELY AND PERMANENTLY GROUNDING IN ACCORDANCE WITH PERTINENT SECTIONS OF ARTICLE 250 OF NEC. RESISTANCE TO GROUND SHALL NOT EXCEED 10 OHMS. ALL RACEWAYS SHALL HAVE AN APPROVED SIZED, INSULATED, STRANDED COPPER GROUNDING TYPE CONDUCTOR, WHERE RACEWAYS CONNECT TO A CONCENTRIC K.O. PROVIDE GROUNDING LOCKWAT OR BUSBARS AND RIGID WIRE EXTENDED AND BOKED TO CONCENTRIC K.O. PROVIDE SIZED, INSULATED, STRANDED COPPER GROUNDING TYPE CONDUCTOR.
 - 3.12 FINAL INSPECTION TESTS: TEST SYSTEM FOR SHORTS AND GROUND, FAULTY WIRING SHALL BE REMOVED AND REPLACED AFTER TEST IS CONNECTED COMPLETE. TEST FOR INSULATION RESISTANCE, RESISTANCE LOWER THAN OUTLINED IN THE NEC. MANUFACTURER'S DATA, ETC. SHALL BE REMOVED AND REPLACED ANY DEVICE, APPARATUS OR FIXTURE UNDER THIS CONTRACT SHOWING SUBSTANTIAL DEFECTS SHALL BE REMOVED AND REPLACED AS DIRECTED BY THE ARCHITECT.
 - 3.13 LABEL ALL RECEPTACLES WITH 1/4" HIGH CAPTIVE LETTERING ON CLEAR TAPE. IF THE RECEPTACLE IS BLACK OR BROWN PROVIDE WHITE LETTERING ON CLEAR TAPE. LABEL TO BE NEATLY CENTERED IN THE TOP SPACE OF THE COVERPLATE, AND INDICATE THE SERVING PANEL AND CIRCUIT ORIGIN.

FIXTURE 'SA' MOUNTING DETAIL

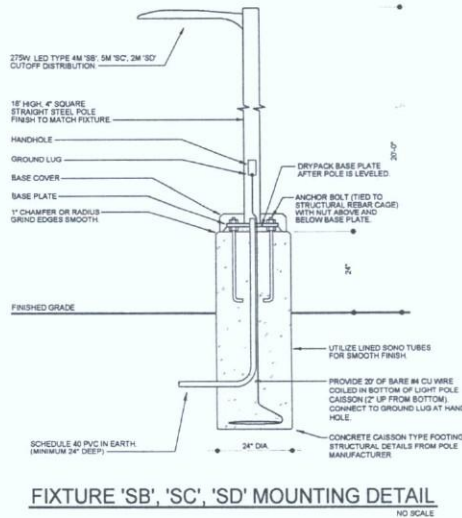


LIGHTING FIXTURE SCHEDULE

TAG	MTL	MANUFACTURER	CATALOG No.	VOLT	No.	LAMPS	REMARKS
1A1	POLE	LITHONIA	DSI DUAL LED 3000 1000 30K 14M 208 SPA OF COBLED	208	-	27WV LED	DARK BRONZE TWIN HEAD TYPE AM MOUNTED AT 30' AND 30' AS NOTED
1B1	POLE	LITHONIA	DSI DUAL LED 3000 1000 30K 14M 208 SPA OF COBLED	208	-	27WV LED	DARK BRONZE TYPE AM MOUNTED AT 30' AS NOTED
1C1	POLE	LITHONIA	DSI DUAL LED 3000 1000 30K 14M 208 SPA OF COBLED	208	-	27WV LED	DARK BRONZE TYPE SM MOUNTED AT 30' AS NOTED
1D1	POLE	LITHONIA	DSI DUAL LED 3000 1000 30K 14M 208 SPA OF COBLED	208	-	27WV LED	DARK BRONZE TYPE SM MOUNTED AT 30' AS NOTED
1E1	WALL	LITHONIA	DSI DUAL LED 3000 1000 30K 14M 208 SPA OF COBLED	120	-	100WV LED	DARK BRONZE TYPE TFFM MOUNTED AT APPROX 17' AND 17' AS NOTED
1F1	WALL	LITHONIA	DSI DUAL LED 3000 1000 30K 14M 208 SPA OF COBLED	120	-	100WV LED	DARK BRONZE TYPE TFFM MOUNTED AT APPROX 17' AND 17' AS NOTED
1G1	POLE	LITHONIA	DSI DUAL LED 3000 1000 30K 14M 208 SPA OF COBLED	208	-	27WV LED	DARK BRONZE TYPE TFFM MOUNTED ON EXISTING POLE AT 18' AS NOTED

- LIGHTING FIXTURE SCHEDULE GENERAL NOTES:**
1. ALL FLUORESCENT FIXTURES TO HAVE ELECTRONIC BALLASTS (T.H.D. 100%).
 2. ALL BATTERY BACKED FLUORESCENT BALLASTS TO BE RATED FOR MINIMUM 100 LUMENS.
 3. ALL PRISMATIC LENSES FOR LAY-IN FIXTURES TO BE 1/2" THICK, PATTERN 12.
 4. ALL FLUORESCENT AND PL LAMPS TO BE 30K MINIMUM OR OF 82, UNLESS NOTED OTHERWISE.
 5. ALL FLUORESCENT FIXTURES TO HAVE INTEGRAL DISCONNECTING MEANS PER 2009 NEC 410.73(D) AND 2008 NEC 410.130(D)(1).
 6. ALL METAL HALIDE FIXTURES TO BE SUPPLIED WITH PLUSE START LAMPS AND BALLASTS.
- LIGHTING FIXTURE SCHEDULE - 1/2 KWH NOTES:**
- REFER TO MOUNTING DETAIL SHEET FOR ADDITIONAL INFORMATION.

FIXTURE 'SB', 'SC', 'SD' MOUNTING DETAIL



YOUNAN PROPERTIES
SITE IMPROVEMENTS
For
Scottsdale Promenade
7000 E Shea Boulevard
Scottsdale, Arizona

JANUARY 30, 2014
RECORD
DRAWING
NEWLYNN
GTAI
GRABER TRAVIS
ARCHITECTS INC.

602.864.0777
4200 NORTH CENTRAL AVENUE
PHOENIX, ARIZONA 85012
FAX 602.864.0791
WWW.GTAI.NET

Revisions
-
-
-
-
Drawn **MSM**
Checked **DOW**
Date **8/30/13**
Scale **AS NOTED**
Job No. **1324**

Sheet Description
ELECTRICAL SPEC
and DETAILS

WOODWARD **W** ENGINEERING
200 SOUTH BAYVIEW ROAD • SUITE 101 • TEMPE, AZ 85281
1.800.884.4027 • 1.800.884.1000 • www.woodwardengineering.com

Sheet No. **E0.00**

6-UP-2014
5/28/2014

Grading & Drainage

SCOTTSDALE PROMENADE

PARKING LOT IMPROVEMENTS

7000 EAST SHEA BLVD.
SCOTTSDALE, ARIZONA

GRADING & DRAINAGE PLAN

GENERAL NOTES

- ALL CONSTRUCTION IN THE PUBLIC RIGHTS-OF-WAY OR IN EASEMENTS GRANTED FOR PUBLIC USE MUST CONFORM TO THE LATEST MARICOPA ASSOCIATION OF GOVERNMENTS (A.G.) UNIFORM STANDARD SPECIFICATIONS AND UNIFORM STANDARD DETAILS FOR PUBLIC WORKS CONSTRUCTION AS AMENDED BY THE LATEST VERSION OF THE CITY OF SCOTTSDALE (2005) SUPPLEMENTAL STANDARD SPECIFICATIONS AND SUPPLEMENTAL STANDARD DETAILS. IF THERE IS A CONFLICT, THE LATTER SHALL GOVERN.
- THE ENGINEERING STANDARDS ON THESE PLANS ARE ONLY APPROVED BY THE CITY OF SCOTTSDALE AND NOT IN DETAIL. IF CONSTRUCTION QUANTITIES ARE SHOWN ON THESE PLANS, THEY ARE NOT VERIFIED BY THE CITY.
- APPROVAL OF PLANS IS VALID FOR SIX (6) MONTHS. IF AN ENCROACHMENT PERMIT FOR THE CONSTRUCTION HAS NOT BEEN ISSUED WITHIN SIX MONTHS, THE PLANS SHALL BE RESUBMITTED TO THE CITY FOR RE-APPROVAL.
- A PUBLIC WORKS INSPECTOR WILL INSPECT ALL WORKS WITHIN THE CITY OF SCOTTSDALE RIGHTS-OF-WAY AND IN EASEMENTS. NOTIFY INSPECTION SERVICES 24 HOURS PRIOR TO STARTING OF CONSTRUCTION (TELEPHONE 312-5750).
- WHENEVER EXCAVATION IS TO BE DONE, CALL THE "BLUE STAKE CENTER", 263-1100, TWO WORKING DAYS BEFORE EXCAVATION IS TO BEGIN. THE CENTER WILL SEE THAT THE LOCATION OF THE UNDERGROUND UTILITY LINES IS IDENTIFIED FOR THE PROJECT. CALL "COLLECT" IF NECESSARY.
- ENCROACHMENT PERMITS ARE REQUIRED FOR ALL WORK IN PUBLIC RIGHTS-OF-WAY AND EASEMENTS GRANTED FOR PUBLIC PURPOSES. AN ENCROACHMENT PERMIT WILL BE ISSUED BY THE CITY UPON RECEIPT OF PAYMENT OF A BASE FEE PLUS A FEE FOR INSPECTION SERVICES TO BE PROVIDED BY THE CITY. COPIES OF ALL PERMITS SHALL BE RETAINED ON-SITE AND SHALL BE AVAILABLE FOR INSPECTION AT ALL TIMES. FAILURE TO PRODUCE THE REQUIRED PERMITS WILL RESULT IN IMMEDIATE WORK STOPPAGE UNTIL THE PROPER PERMIT DOCUMENTATION IS OBTAINED.
- ALL EXCAVATION AND GRADING WHICH IS NOT IN THE PUBLIC RIGHTS-OF-WAY OR NOT IN EASEMENTS GRANTED FOR PUBLIC USE MUST CONFORM TO CHAPTER 70, EXCAVATION AND GRADING, OF THE LATEST EDITION OF THE UNIFORM BUILDING CODE PREPARED BY THE INTERNATIONAL CONFERENCE OF BUILDING OFFICIALS. A PERMIT FOR THIS GRADING MUST BE SECURED FROM THE CITY FOR A FEE ESTABLISHED BY THE UNIFORM BUILDING CODE.
- SIGNS REQUIRE SEPARATE PERMITS AND APPROVALS.

BLUE STAKE

CALL THE BLUE STAKE CENTER (263-1100) 48 HOURS BEFORE YOU DIG FOR LOCATION OF ALL UNDERGROUND UTILITIES.

NOTE TO CONTRACTOR

BEFORE ANY CONSTRUCTION, THE CONTRACTOR IS TO VERIFY ELEVATION AND LOCATION OF EXISTING UTILITIES THAT ARE INVOLVED IN CONSTRUCTION OF THESE PLANS. ANY DISCREPANCIES SHALL BE NOTIFIED TO ONEILL ENGINEERING FOR ANY NEEDED ADJUSTMENTS.

LEGEND

---+---	PROPERTY CORNER	□	ELEC. PULL BOX
---	PROPERTY LINE	□	TELEPHONE RISER
---	2" VERT. CURB & GUTTER	□	TRAFFIC CONTROL BOX
---	6" CURB	□	GAS METER
---	MASONRY WALL	□	POWER POLE
○	SEWER MANHOLE	□	GUY WIRE
●	FIRE HYDRANT	□	HANDICAP PARKING
■	WATER METER	□	PROP. CONCRETE SURFACE
■	WATER VALVE	□	TOP OF CURB ELEV.
+	BACK-FLOW PREVENTER	□	GUTTER ELEV.
+	SITE LIGHT	□	FLOW LINE ELEV.
+	STREET LIGHT	□	CONCRETE ELEV.
⊗	ELEC. TRANS. PAD	□	PAVEMENT ELEV.
⊗	DRYWELL	□	GRADE ELEV.
⊗	CATCH BASIN	□	LOWEST FINISH FLOOR ELEV. PER 1988 NAVD
⊗	TRAFFIC SIGN	□	EXISTING SURFACE FLOW ARROW
		□	PROPOSED SURFACE FLOW ARROW

FEMA INFORMATION

FLOOD INSURANCE RATE MAP (FIRM) INFORMATION				
COMMUNITY NUMBER	PANEL NUMBER (INDEX DATE)	SUFFIX	DATE OF FIRM (INDEX DATE)	FIRM ZONE
040012	1685	F	9-30-05	N/A (SHADED)
ENGINEER'S CERTIFICATION: THE LOWEST FLOOR ELEVATION(S) AND/OR FLOODPROOFING ELEVATION(S) ON THIS PLAN ARE SUFFICIENTLY HIGH TO PROVIDE PROTECTION FROM FLOODING CAUSED BY A ONE-HUNDRED YEAR STORM AND ARE IN ACCORDANCE WITH CITY OF SCOTTSDALE, "FLOODWAYS & FLOODPLAIN" ORDINANCE (CHAPTER 37, S.R.C.)				

LEGAL DESCRIPTION

PANEL NO. 1
THE WEST 330.00 FEET OF THE EAST 330.00 FEET OF THE NORTH 450.00 FEET OF THE SOUTH 530.00 FEET OF THE WEST HALF OF THE SOUTHWEST QUARTER OF SECTION 22, TOWNSHIP 3 NORTH, RANGE 4 EAST OF THE GLA AND SALT RIVER BASE AND MERIDIAN, MARICOPA COUNTY, ARIZONA; EXCEPT THE EAST 210.00 FEET OF THE SOUTH 225.00 FEET OF SAID WEST HALF; EXCEPT THAT PORTION CONVEYED TO THE CITY OF SCOTTSDALE IN DEED RECORDED OCTOBER 14, 1994, IN DOCUMENT NO. 94-0741747, RECORDS OF MARICOPA COUNTY, ARIZONA.

PANEL NO. 2
THE WEST 190.00 FEET OF THE EAST 210.00 FEET OF THE NORTH 180.00 FEET OF THE SOUTH 225.00 FEET OF THE WEST HALF OF THE SOUTHWEST QUARTER OF SECTION 22, TOWNSHIP 3 NORTH, RANGE 4 EAST OF THE GLA AND SALT RIVER BASE AND MERIDIAN, MARICOPA COUNTY, ARIZONA; EXCEPT THE EAST 330.00 FEET; AND EXCEPT THE WEST 30.00 FEET; AND EXCEPT BEGINNING AT THE INTERSECTION OF THE EAST LINE OF THE WEST 30.00 FEET OF SAID WEST HALF WITH THE NORTH LINE OF THE SOUTH 65.00 FEET OF SAID WEST HALF; THENCE NORTHERLY ALONG SAID EAST LINE, 12.00 FEET TO THE BEGINNING OF A TANGENT CURVE NORTHEASTERLY; THENCE SOUTHEASTERLY ALONG THE ARC OF SAID CURVE TO A POINT OF TANGENCY IN SAID NORTH LINE, SAID POINT BEARS 12.00 FEET EASTERLY FROM THE POINT OF BEGINNING.

PANEL NO. 3
THAT PART OF THE WEST HALF OF THE SOUTHWEST QUARTER OF SECTION 22, TOWNSHIP 3 NORTH, RANGE 4 EAST OF THE GLA AND SALT RIVER BASE AND MERIDIAN, MARICOPA COUNTY, ARIZONA, BEING MORE PARTICULARLY DESCRIBED AS FOLLOWS: BEGINNING AT THE INTERSECTION OF THE WEST LINE OF THE EAST 100.00 FEET OF SAID WEST HALF WITH THE NORTH LINE OF THE SOUTH 140.00 FEET OF SAID WEST HALF; THENCE EASTERLY ALONG SAID NORTH LINE, A DISTANCE OF 30.00 FEET; THENCE SOUTHERLY ALONG SAID EAST LINE, A DISTANCE OF 10.00 FEET; THENCE SOUTHWESTERLY TO THE INTERSECTION OF THE WEST LINE OF THE EAST 94.00 FEET OF SAID WEST HALF WITH THE NORTH LINE OF THE SOUTH 75.00 FEET OF SAID WEST HALF; THENCE SOUTHERLY ALONG SAID NORTH LINE, A DISTANCE OF 6.00 FEET TO THE WEST LINE OF THE SOUTH 65.00 FEET OF SAID WEST HALF; THENCE NORTHERLY ALONG SAID WEST LINE, A DISTANCE OF 75.00 FEET TO THE POINT OF BEGINNING.

PANEL NO. 4
THAT PART OF THE WEST HALF OF THE SOUTHWEST QUARTER OF SECTION 22, TOWNSHIP 3 NORTH, RANGE 4 EAST OF THE GLA AND SALT RIVER BASE AND MERIDIAN, MARICOPA COUNTY, ARIZONA, LYING SOUTH OF THE FOLLOWING DESCRIBED LINE BEGINNING AT THE NORTHWEST CORNER OF SUNSHINE PLAZA, ACCORDING TO BOOK 65 OF MAPS, PAGE 40, RECORDS OF MARICOPA COUNTY; THENCE SOUTH 90 DEGREES 00 MINUTES 00 SECONDS EAST, 10.00 FEET; THENCE ALONG THE WEST LINE OF THE EAST 20.00 FEET OF SAID WEST HALF, A DISTANCE OF 99.85 FEET TO THE INTERSECTION OF SAID WEST LINE WITH THE CONTINUATION OF SALADAR DRIVE, AS RECORDED ON THE PLAT OF SAID SUNSHINE PLAZA AND THE TRUE POINT OF BEGINNING OF THE LINE HEREIN DESCRIBED; THENCE SOUTH 89 DEGREES 47 MINUTES 41 SECONDS WEST ALONG A LINE PARALLEL WITH THE NORTH LINE OF SAID WEST HALF, A DISTANCE OF 840.52 FEET TO A POINT ON THE WEST LINE OF SAID WEST HALF; AND THE TERMINUS OF THE LINE DESCRIBED HEREIN.

PANEL NO. 5
EXCEPT THE EAST 25.00 FEET; AND EXCEPT THE WEST 30.00 FEET; AND EXCEPT THE SOUTH 225.00 FEET; EXCEPT THE WEST 30.00 FEET; AND EXCEPT THE EAST 330.00 FEET OF SAID SOUTH 225.00 FEET.

PANEL NO. 6
AN EASEMENT FOR MOTOR VEHICLE PARKING AND INCIDENTAL VEHICULAR AND PEDESTRIAN ACCESS BY OR PURSUANT TO THAT CERTAIN "ORDINANCE OF EASEMENTS AND DECLARATION OF RESTRICTIONS" RECORDED OCTOBER 14, 1994, IN DOCUMENT NO. 94-0741748, AND THAT CERTAIN "AMENDED AND RESTATED DEED OF EASEMENTS AND DECLARATION OF RESTRICTIONS" RECORDED APRIL 25, 2000, IN DOCUMENT NO. 00-0000003, RECORDS OF MARICOPA COUNTY, ARIZONA, ACROSS THE FOLLOWING DESCRIBED PARCELS, A AND PARCEL B:

PANEL A
A PORTION OF THE WEST HALF OF THE SOUTHWEST QUARTER OF SECTION 22, TOWNSHIP 3 NORTH, RANGE 4 EAST OF THE GLA AND SALT RIVER BASE AND MERIDIAN, MARICOPA COUNTY, ARIZONA, BEING MORE PARTICULARLY DESCRIBED AS FOLLOWS: BEGINNING AT THE SOUTHEAST CORNER OF SAID SECTION 22; THENCE SOUTH 89 DEGREES 21 MINUTES 18 SECONDS WEST ALONG THE SOUTH SECTION LINE, 690.48 FEET; SAID LINE BEING THE MONUMENT LINE OF SHEA BOULEVARD; THENCE NORTH 00 DEGREES 00 MINUTES 00 SECONDS WEST, 65.02 FEET TO THE POINT OF BEGINNING; THENCE SOUTH 89 DEGREES 31 MINUTES 18 SECONDS WEST, 14.00 FEET ALONG THE NORTH RIGHT OF WAY LINE OF SHEA BOULEVARD; THENCE NORTH 00 DEGREES 00 MINUTES 00 SECONDS WEST, 6.00 FEET; THENCE NORTH 22 DEGREES 45 MINUTES 38 SECONDS EAST, 62.02 FEET; THENCE NORTH 00 DEGREES 00 MINUTES 00 SECONDS WEST, 10.00 FEET; THENCE NORTH 89 DEGREES 31 MINUTES 18 SECONDS EAST, 30.00 FEET TO A POINT ON THE WEST LINE OF A 30 FOOT WIDE PUBLIC ALLEY; THENCE SOUTH 00 DEGREES 00 MINUTES 01 SECONDS EAST, 75.00 FEET ALONG THE SAID WEST LINE TO THE POINT OF BEGINNING.

PANEL B
A PORTION OF THE WEST HALF OF THE SOUTHWEST QUARTER OF SECTION 22, TOWNSHIP 3 NORTH, RANGE 4 EAST OF THE GLA AND SALT RIVER BASE AND MERIDIAN, MARICOPA COUNTY, ARIZONA, BEING MORE PARTICULARLY DESCRIBED AS FOLLOWS: BEGINNING AT THE SOUTHWEST CORNER OF SAID SECTION 22; THENCE SOUTH 89 DEGREES 21 MINUTES 18 SECONDS WEST ALONG THE SOUTH SECTION LINE, 690.48 FEET; SAID LINE BEING THE MONUMENT LINE OF SHEA BOULEVARD; THENCE NORTH 00 DEGREES 00 MINUTES 00 SECONDS WEST, 140.02 FEET ALONG THE WEST LINE OF A 30 FOOT WIDE PUBLIC ALLEY TO THE POINT OF BEGINNING; THENCE SOUTH 89 DEGREES 31 MINUTES 18 SECONDS WEST, 50.00 FEET; THENCE NORTH 00 DEGREES 00 MINUTES 01 SECONDS WEST, 200.01 FEET; THENCE NORTH 89 DEGREES 31 MINUTES 18 SECONDS EAST, 30.00 FEET TO A POINT ON THE WEST LINE OF SAID 30 FOOT PUBLIC ALLEY; THENCE SOUTH 00 DEGREES 00 MINUTES 01 SECONDS EAST, 200.01 FEET ALONG SAID WEST LINE TO THE POINT OF BEGINNING.

UTILITY COMPANIES

WATER & SEWER: CITY OF SCOTTSDALE (480) 994-2366
9190 E. SAN SALVADOR DR.

ELECTRIC: ARIZONA PUBLIC SERVICE (602) 371-6438
2121 W. CHERYL DR. PHOENIX, AZ

GAS: SOUTHWEST GAS (480) 730-3627
5705 S. KYRONE RD. TEMPE, AZ 85283

TELEPHONE: CENTURY LINK (480) 330-0466
6350 S. MAPLE #125, TEMPE, AZ 85283

CABLE TV: COX COMMUNICATION (480) 948-6488
7861 E. GRAY RD.
SCOTTSDALE, AZ 85016



ASSESSOR'S PARCEL

175-42-156N
175-42-156H
175-42-136P
175-42-136O

AREA

363,647 S.F.

BENCHMARK

CITY OF SCOTTSDALE GPS POINT 3272, BEING A CITY OF SCOTTSDALE BRASS CHAIN HANDHOLE AT THE INTERSECTION OF SHEA BOULEVARD AND 72nd STREET. ELEV = 1351.261 (CITY OF SCOTTSDALE NAVD 88 DATUM)

I HEREBY CERTIFY THAT ALL ELEVATIONS REPRESENTED ON THIS PLAN ARE BASED ON THE ELEVATION DATUM FOR THE CITY OF SCOTTSDALE BENCHMARK PROVIDED ABOVE.

ENGINEER _____

DATE _____

ENGINEER'S CERTIFICATION

THE ENGINEER OF RECORD ON THESE PLANS HAS RECEIVED A COPY OF THE APPROVED SPECIFICATIONS FOR THIS PROJECT AND HAS DESIGNED THESE PLANS IN CONFORMANCE WITH THE APPROVED SPECIFICATIONS.

THIS ALSO CERTIFIES THAT THERE IS NO SIGNIFICANT INCREASE IN POTENTIAL FOR FLOOD DAMAGE TO THE SUBJECT PROPERTY OR ANY OTHER PROPERTY, DUE TO THIS DEVELOPMENT.

THE LOWEST FLOOR ELEVATION(S) AND/OR FLOODPROOFING ELEVATIONS ON THIS PLAN ARE SUFFICIENTLY HIGH TO PROVIDE PROTECTION FROM FLOODING CAUSED BY A ONE-HUNDRED YEAR STORM, AND ARE IN ACCORDANCE WITH CITY OF SCOTTSDALE FLOODWAYS & FLOODPLAIN ORDINANCE (CHAPTER 37, S.R.C.)

BY: _____

SHEET INDEX

C-1 COVER SHEET
C-2 GRADING & DRAINAGE PLAN
C-3 GRADING & DRAINAGE PLAN

OWNER

YOUNMAN PROPERTIES
5959 TOPANGA CANYON BLVD.
WOODLAND HILLS, CA 91367
TELE: 818-703-9600
CONTACT: JOY DEBACKER

ENGINEER

O'NEILL ENGINEERING, L.L.C.
CONTACT: DANIEL GONZALEZ
2001 W. CAMELBACK ROAD SUITE 200
PHOENIX, ARIZONA 85015
TEL: (602) 242-0020
FAX: (602) 242-5722

AS-BUILT CERTIFICATION

I HEREBY CERTIFY THAT THE "RECORD DRAWING" MEASUREMENTS AS SHOWN HEREON WERE MADE UNDER MY SUPERVISION OR AS NOTED AND ARE CORRECT TO THE BEST OF MY KNOWLEDGE AND BELIEF.

REGISTERED LAND SURVEYOR _____

DATE _____

REGISTRATION NUMBER _____

CIVIL APPROVAL

REVIEW & RECOMMENDED APPROVAL BY:

PAVING	TRAFFIC
G & D	PLANNING
W & S	FIRE
RET. WALLS	

ENGINEERING COORDINATION MANAGER (OR DESIGNER) _____

DATE _____

O'NEILL ENGINEERING, L.L.C.
Engineering • Planning • Surveying • SUE



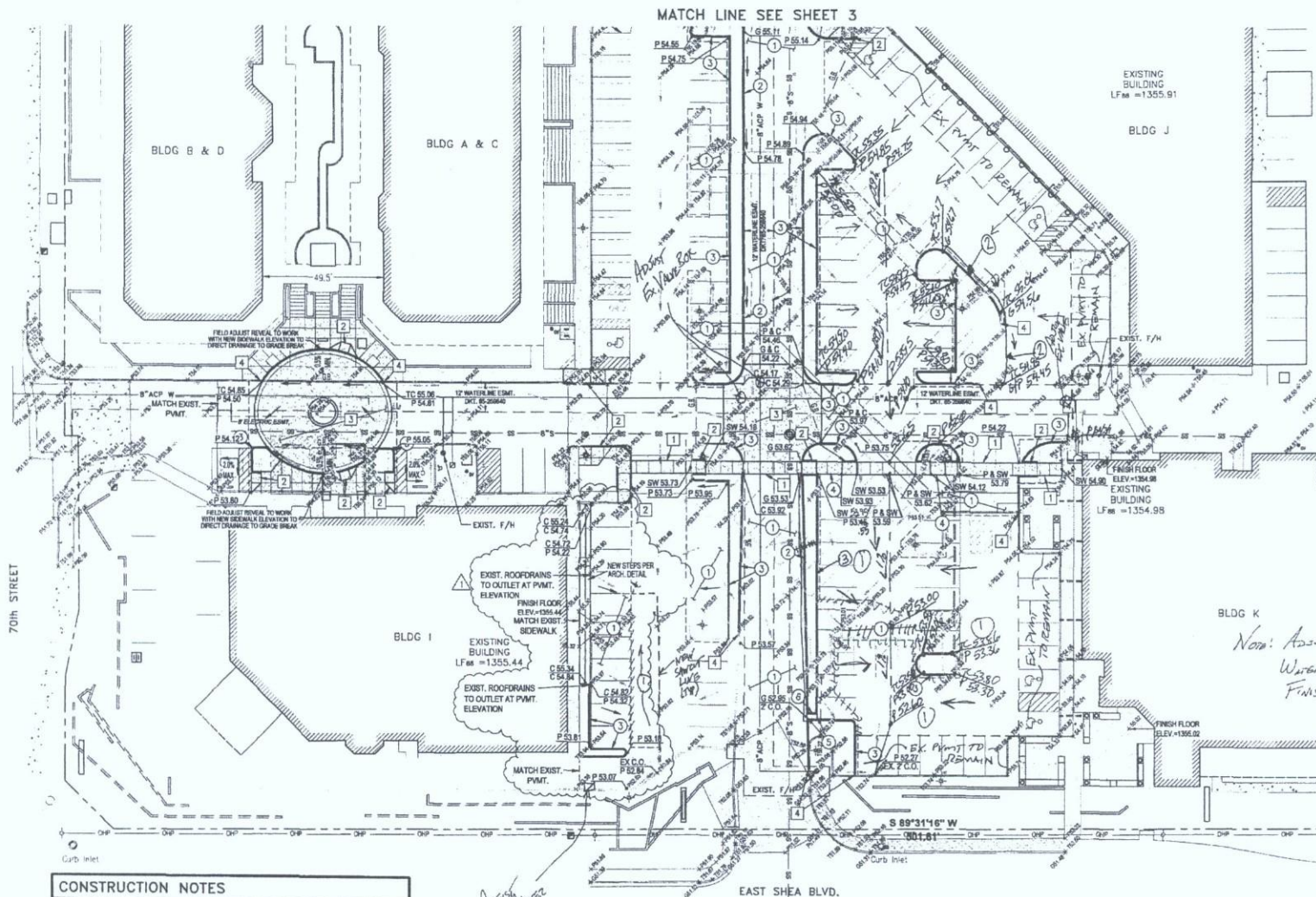
PROMENADE
7000 EAST SHEA BOULEVARD
SCOTTSDALE, ARIZONA

GRADING & DRAINAGE PLAN



Date	Drawn By	Checked By	Reviewed By	Scale	Sheet
2013.02.06	DAVID J. WILSON	DANIEL A. GONZALEZ	DANIEL A. GONZALEZ	1" = 40'	1 of 3

6-UP-2014
5/28/2014



CONSTRUCTION NOTES

1. INSTALL CONCRETE SIDEWALK PER MAG STD. DET. 230 AS SHOWN. SEE ARCHITECTURAL PLANS FOR DETAIL.
2. INSTALL ADA RAMP PER ARCHITECTURAL PLANS.
3. INSTALL "ENHANCED" CONCRETE PER ARCHITECTURAL PLANS.
4. MATCH EXISTING.
5. REMOVE AND RELOCATE EXISTING FIRE HYDRANT ASSEMBLY PER MAG STD. DET. 360-1, 360-3, AND 362. CONNECT ASSEMBLY TO EXISTING CAPPED TEE. IF TEE IS NOT LOCATED, INSTALL 8" x 6" TAPPING SLEEVE PER MAG STD. DET. 340. CAP TEE AFTER REMOVING EXISTING HYDRANT ASSEMBLY.
6. NEW LOCATION OF RELOCATED FIRE HYDRANT.

SEE SHEET 3 FOR DETAILS ① THRU ⑥.

NOTE: SEE ARCHITECTURAL PLANS FOR NEW STRIPING.

NOTE: SEE SITE DEMOLITION PLAN (ARCHITECTURAL SHEET A101) FOR LIMITS OF REMOVALS.

CONTRACTOR TO NOTIFY ENGINEER IF ANY DISCREPANCIES OCCUR BETWEEN DISCIPLINES PRIOR TO CONSTRUCTION.



O'NEILL ENGINEERING, L.L.C.
Engineering • Planning • Surveying • SUE



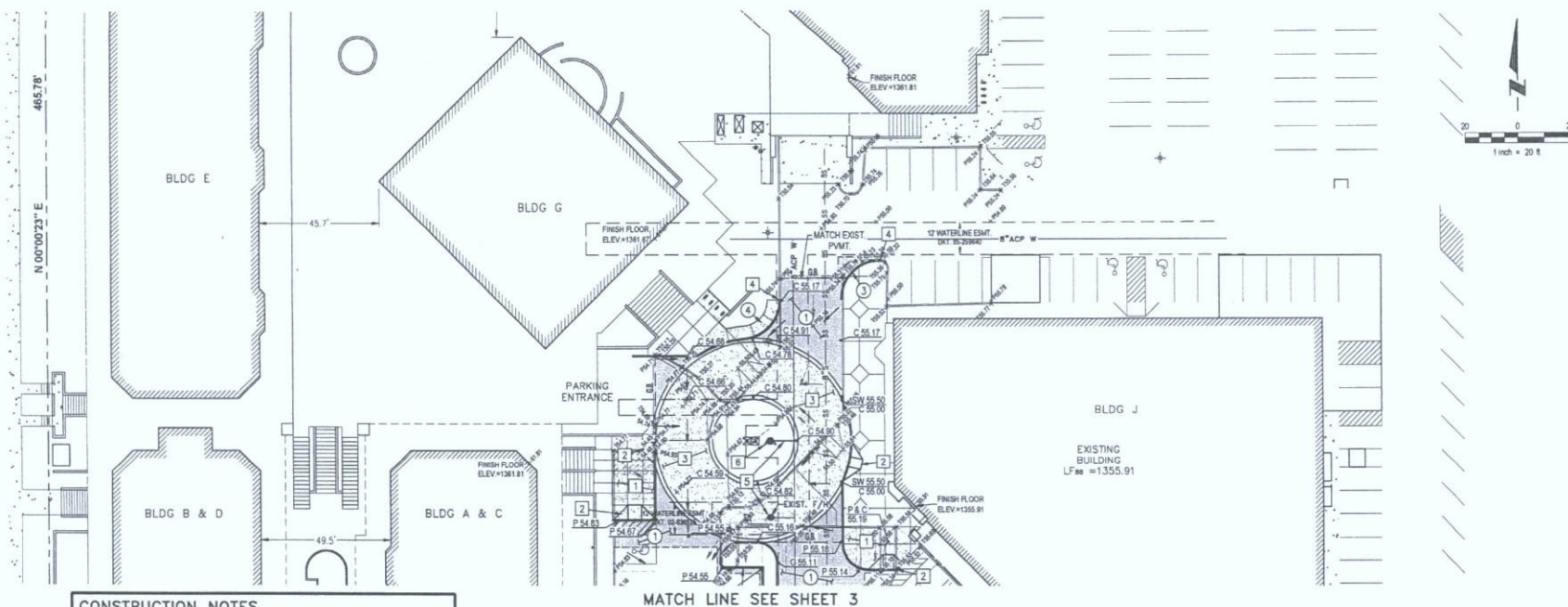
PROMENADE
7000 EAST SHEA BOULEVARD
SCOTTSDALE, ARIZONA

GRADING & DRAINAGE PLAN



Project No.	2013-001
Date	04/08/2014
Drawn By	CHINER HET/CDM FT
Checked By	
Scale	1" = 20'
Sheet No.	3 of 3

6-UP-2014
5/28/2014



CONSTRUCTION NOTES

- 1 INSTALL CONCRETE SIDEWALK PER MAG STD. DET. 230 AS SHOWN. SEE ARCHITECTURAL PLANS FOR DETAIL.
- 2 INSTALL ADA RAMP PER ARCHITECTURAL PLANS.
- 3 INSTALL "ENHANCED" CONCRETE PER ARCHITECTURAL PLANS.
- 4 MATCH EXISTING.
- 5 REMOVE AND RELOCATE EXISTING FIRE HYDRANT ASSEMBLY PER MAG STD. DET. 360-1, 360-3, AND 362. CONNECT ASSEMBLY TO EXISTING CAPPED TEE. IF TEE IS NOT LOCATED, INSTALL 6" x 6" TAPPING SLEEVE PER MAG STD. DET. 340. CAP TEE AFTER REMOVING EXISTING HYDRANT ASSEMBLY.
- 6 NEW LOCATION OF RELOCATED FIRE HYDRANT.

MATCH LINE SEE SHEET 3

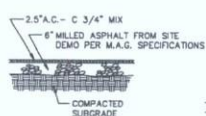
NOTE: SEE ARCHITECTURAL PLANS FOR NEW STRIPING.

NOTE: SEE SITE DEMOLITION PLAN (ARCHITECTURAL SHEET A101) FOR LIMITS OF REMOVALS.

CONTRACTOR TO NOTIFY ENGINEER IF ANY DISCREPANCIES OCCUR BETWEEN DISCIPLINES PRIOR TO CONSTRUCTION.

DETAILS ① THRU ⑥.

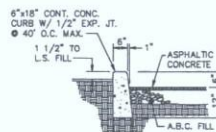
① TYP. PAVEMENT SECTION
N.T.S.



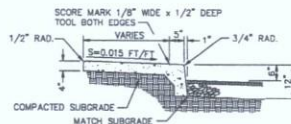
② CURB & GUTTER
N.T.S.



③ CAST IN PLACE CURB
N.T.S.

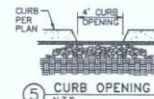


④ SIDEWALK TURNDOWN DET.
N.T.S.

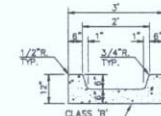


- NOTES:
1. SIDEWALK CONST. SHALL CONFORM TO SECT. 340.
 2. CONTRACTION JOINT SPACING @ 15' MAX.
 3. EXPANSION JOINT PER SECT. 340.

⑤ CURB OPENING
N.T.S.



⑥ CONCRETE CHANNEL
N.T.S.



CALL TWO WORKING DAYS
BEFORE YOU DIG
800-283-1100
1-800-STAKE-IT
(LIMITED WARRANTY - SEE NOTES)

O'NEILL ENGINEERING, L.L.C.
Engineering • Planning • Surveying • SUE



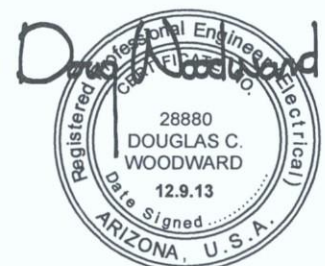
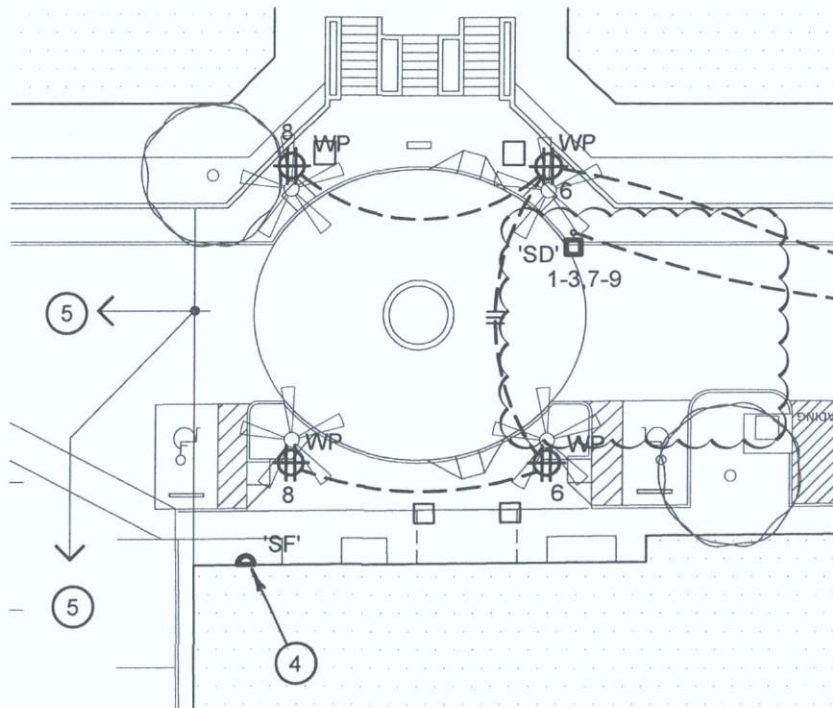
PROMENADE
3000 EAST WILSON BOULEVARD
SUITE 100
SCOTTSDALE, ARIZONA

GRADING & DRAINAGE PLAN



Project No.	Client	Scale	Sheet	Total
2013.021.001			1	1
Design Date	Design By	Drawn By	Check By	Scale
August 20, 2013				

6-UP-2014
5/28/2014



SHEET REVISED: E1.00

EXPIRES 03.31.2016

<p>WOODWARD ENGINEERING</p> <p>203 SOUTH SMITH ROAD • SUITE 101 • TEMPE, AZ. 85281 T 480.894.4057 • F 480.894.1063 • www.woodward-engineering.com</p>	<p>YOUNAN PROPERTIES SITE IMPROVEMENTS For Scottsdale Promenade 7000 E Shea Boulevard Scottsdale, Arizona</p>	<p>12.9.13 ARCH #1324 WE # 13086</p>	<p>ESK 01</p>
---	--	--	----------------------------------

6-UP-2014
5/28/2014



6-UP-2014
5/28/2014



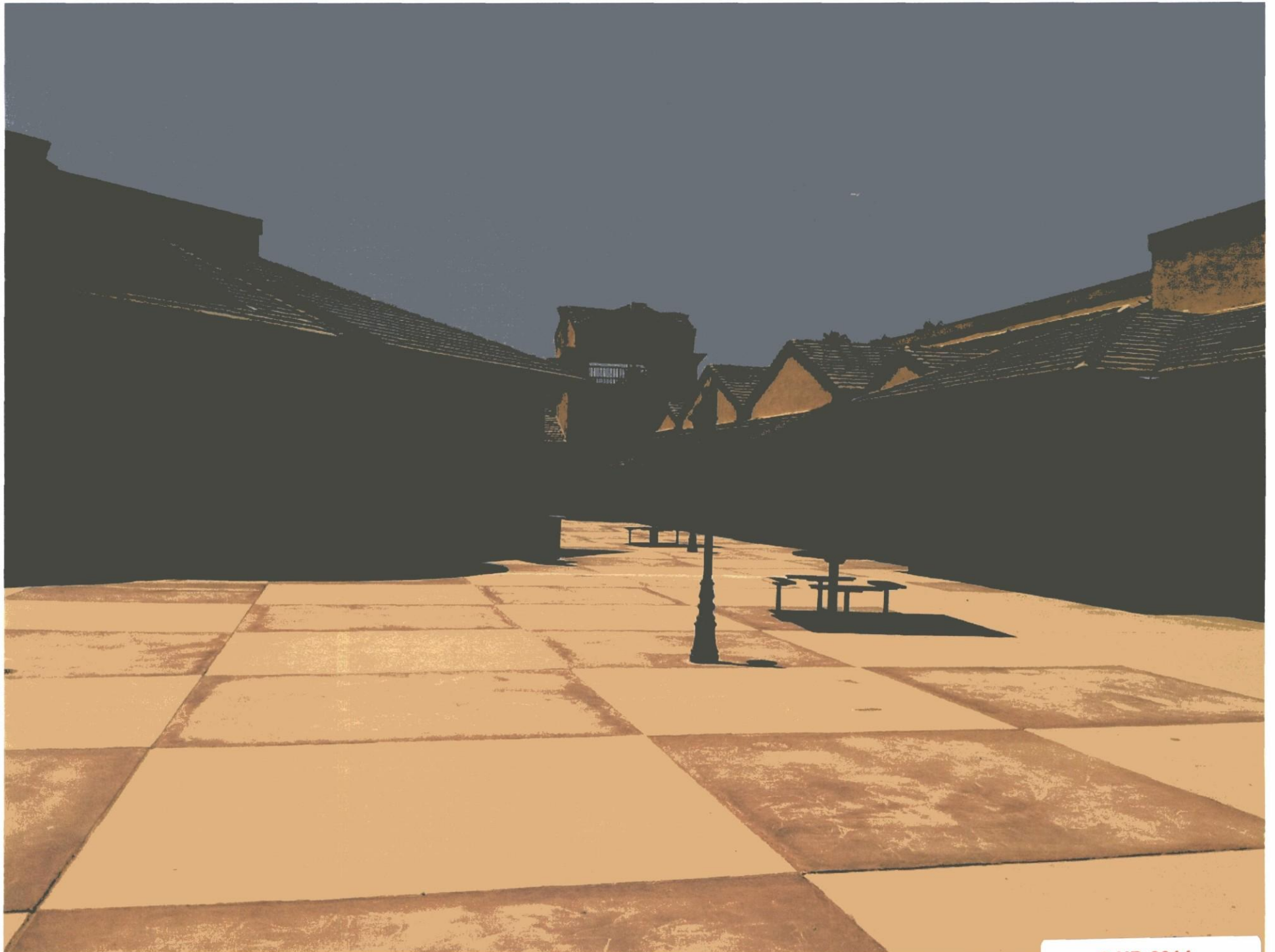
6-UP-2014
5/28/2014



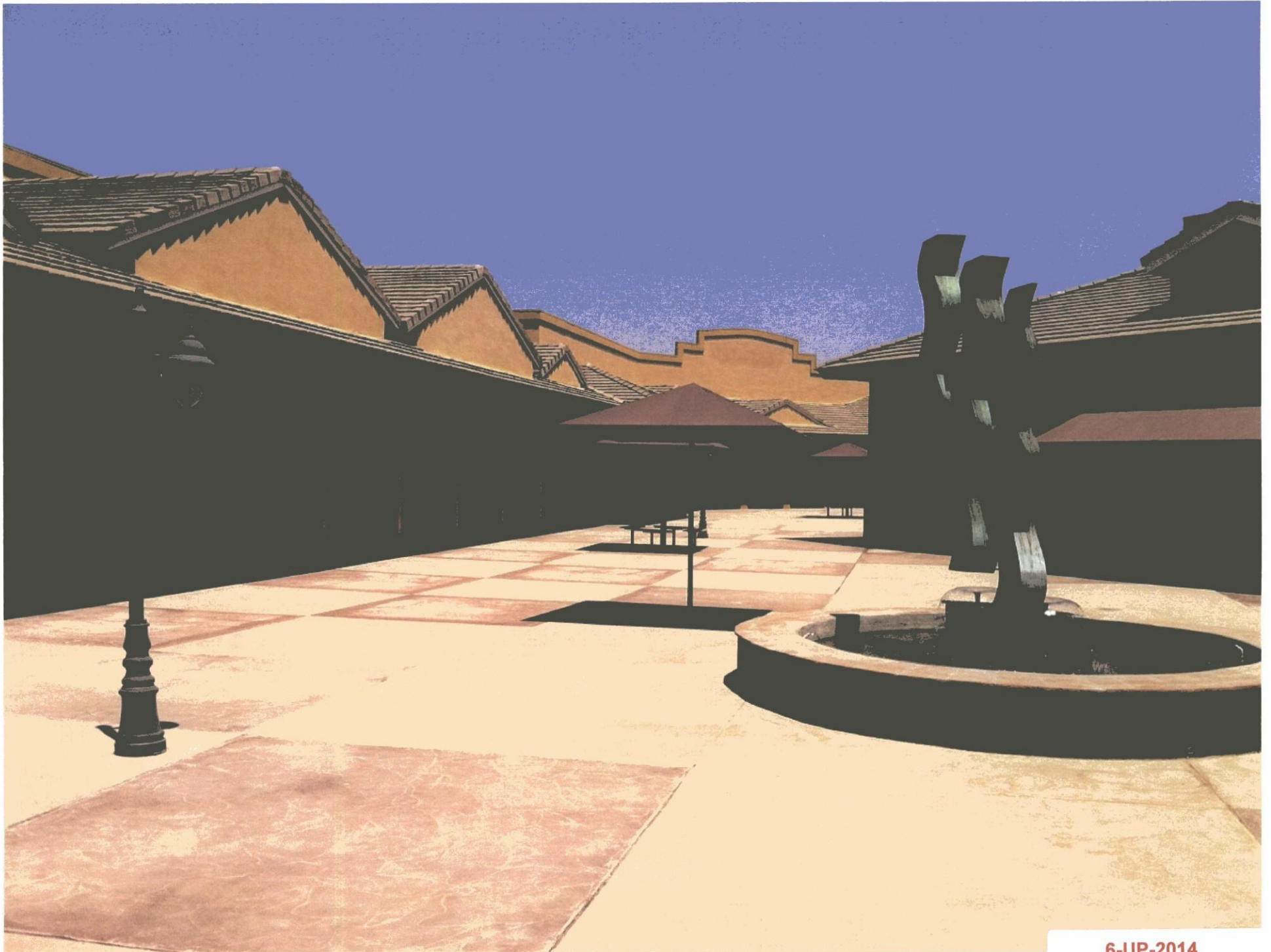
6-UP-2014
5/28/2014



6-UP-2014
5/28/2014



6-UP-2014
5/28/2014



6-UP-2014
5/28/2014