



at&t

SITE NAME: WASTE MANAGEMENT OPEN #2
CITY: SCOTTSDALE
STATE: ARIZONA
COUNTY: MARICOPA

PROJECT INFORMATION

ADDRESS

8082 E. PRINCESS DR.
 SCOTTSDALE, AZ 85255

LANDLORD

CITY OF SCOTTSDALE
 7447 E. INDIAN SCHOOL RD.
 SCOTTSDALE, AZ. 85251

LAND DESCRIPTION OF SUBJECT PARCEL

ZONING: R-4
 APN: 215-07-029-B

COORDINATES

LATITUDE: 33° 38' 36.82" N
 LONGITUDE: 111° 54' 25.25" W

PROJECT OWNER

AT&T MOBILITY
 1355 W. UNIVERSITY DRIVE
 MESA, AZ. 85201

APPLICANT / CONTACT

BENJAMIN FELDMAN
 PINNACLE CONSULTING, INC
 PHONE: (602) 819-4663

PROJECT DESCRIPTION

THIS PROJECT CONSISTS OF THE PLACEMENT OF A TEMPORARY TELECOMMUNICATIONS EQUIPMENT PLATFORM AND INSTALLATION OF DIRECT EMBEDDED WOOD POLE.

DEVELOPMENT AND CONSTRUCTION OF THIS PROJECT WILL COMPLY WITH ALL APPLICABLE CODES AND ORDINANCES

THIS PROJECT DOES NOT INCLUDE WATER OR SEWER. EXISTING PARKING LOT IS NOT AFFECTED BY THIS PROJECT.



CONSULTING TEAM

ARCHITECT

YOUNG DESIGN CORP.
 10245 E. VIA LINDA #211
 SCOTTSDALE, AZ. 85258
 CONTACT: JOHN SULTZBACH
 PHONE: (480) 451-9609

PROJECT MANAGER

ROBERT WALKER (AT&T MOBILITY)
 1355 W. UNIVERSITY DRIVE
 MESA, AZ. 85201
 PHONE: (480) 621-9276

SITE ACQUISITION

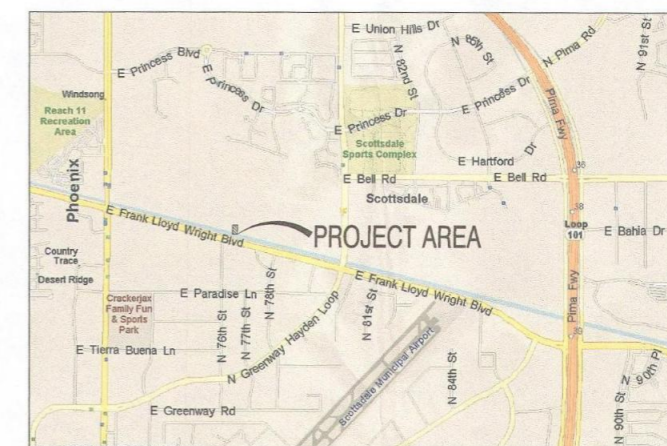
BENJAMIN FELDMAN
 PINNACLE CONSULTING, INC
 PHONE: (602) 819-4663

ZONING

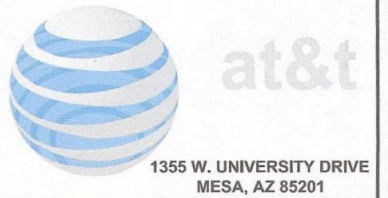
BENJAMIN FELDMAN
 PINNACLE CONSULTING, INC
 PHONE: (602) 819-4663

INDEX OF DRAWINGS

NUMBER	NAME OF SHEET	REV.
T-1	TITLE PAGE	
Z-1	OVERALL SITE PLAN	
Z-2	ENLARGED SITE PLAN	
Z-3	ELEVATIONS	
Z-4	4552-TD RFDS	
Z-5	4560-AA RFDS	
Z-6	2322-AA RFDS	
Z-7	PLUMBING DIAGRAM AND DETAILS	



CLIENT



PLANS PREPARED BY



architecture / project management
 10245 E. Via Linda, Scottsdale, AZ 85258
 ph: 480 451 9609 fax: 480 451 9608
 e mail: corp@ydcoffice.com

SEAL
 This drawing is copyrighted and the property of Young Design Corporation (YDC) & produced solely by YDC and affiliates. reproduction or use of this drawing and/or the information contained herein is forbidden without written permission by Young Design Corporation.



THIS DOCUMENT CONTAINS AN ELECTRONIC SIGNATURE PURSUANT TO A.R.S. TITLE 41 AND TITLE 44. IT IS A VIOLATION FOR ANY PERSON UNLESS UNDER THE DIRECT SUPERVISION OF THE REGISTRANT, TO MODIFY THIS DOCUMENT IN ANY WAY.

NO.	DATE	DESCRIPTION
1	9/2/14	REVIEW
2	10/9/14	REVIEW
3	10/21/14	SUBMITTAL

ARCHITECTS JOB NO.
YDC-6087

PROJECT INFORMATION

WASTE MANAGEMENT OPEN #2
 15TH GREEN
 SCOTTSDALE, AZ 85255

SHEET TITLE

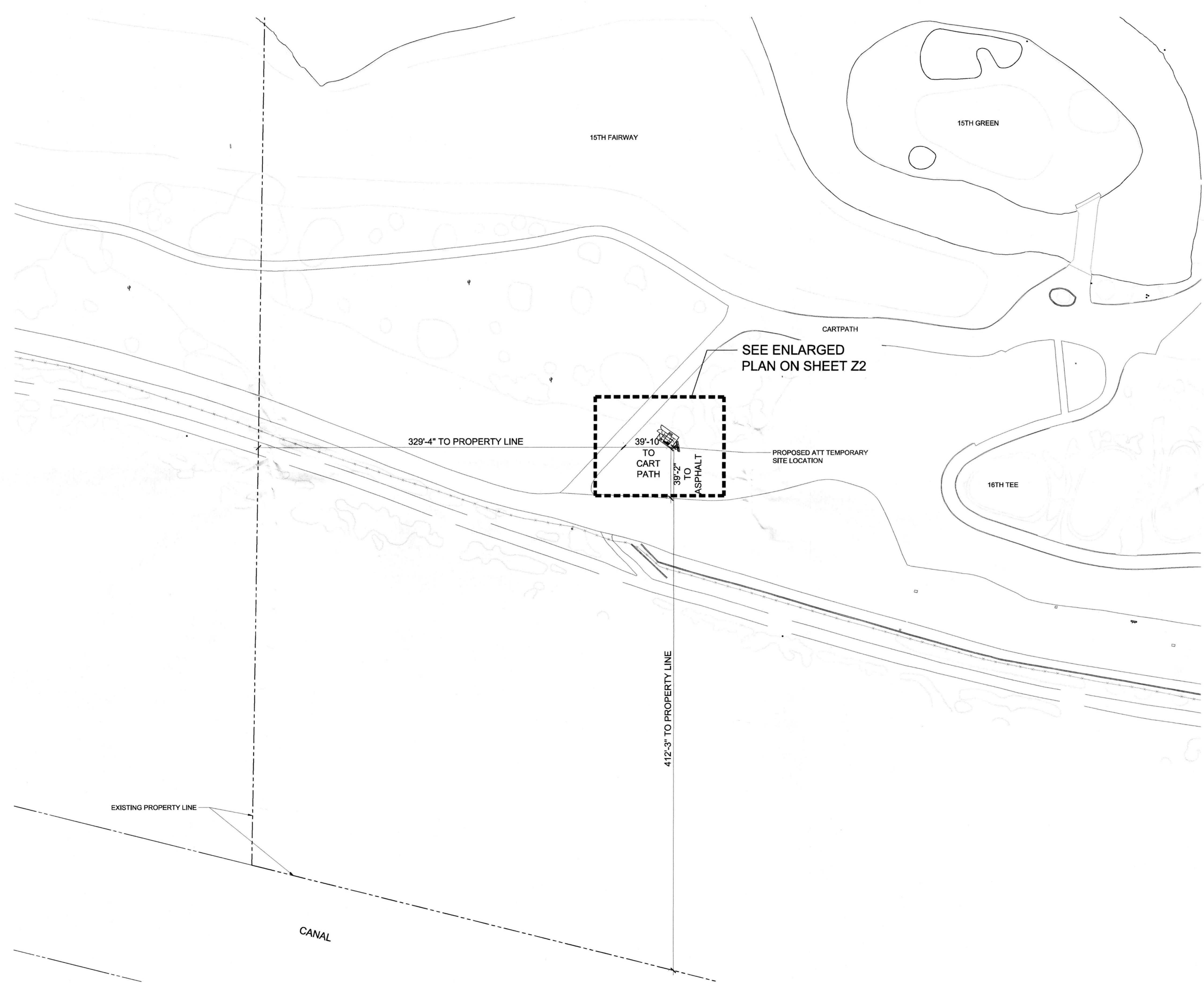
PROJECT INFORMATION

JURISDICTION APPROVAL

STIPULATION SET
 RETAIN FOR RECORDS
 APPROVED
 11-25-14 DATE KN INITIALS

SHEET NUMBER

T1



1
SITE PLAN

SCALE: 1" = 40'-0"

CLIENT

1355 W. UNIVERSITY DRIVE
 MESA, AZ 85201

PLANS PREPARED BY

architecture / project management
 10245 E. Via Linda, Scottsdale, AZ 85258
 ph: 480 451 9609 fax: 480 451 9608
 e mail: corp@ydcoffice.com

SEAL

This drawing is copyrighted and the property of Young Design Corporation (YDC) & produced solely by YDC and affiliates. reproduction or use of this drawing and/or the information contained hereon is forbidden without written permission by Young Design Corporation.

THIS DOCUMENT CONTAINS AN ELECTRONIC SIGNATURE PURSUANT TO A.R.S. TITLE 41 AND TITLE 44. IT IS A VIOLATION FOR ANY PERSON, UNLESS UNDER THE DIRECT SUPERVISION OF THE REGISTRANT, TO MODIFY THIS DOCUMENT IN ANY WAY.

NO.	DATE	DESCRIPTION
1	9/2/14	REVIEW
2	10/9/14	REVIEW
3	10/21/14	SUBMITTAL

ARCHITECTS JOB NO.
YDC-6087

PROJECT INFORMATION

WASTE MANAGEMENT OPEN #2

15TH GREEN
 SCOTTSDALE, AZ 85255

SHEET TITLE

OVERALL SITE PLAN

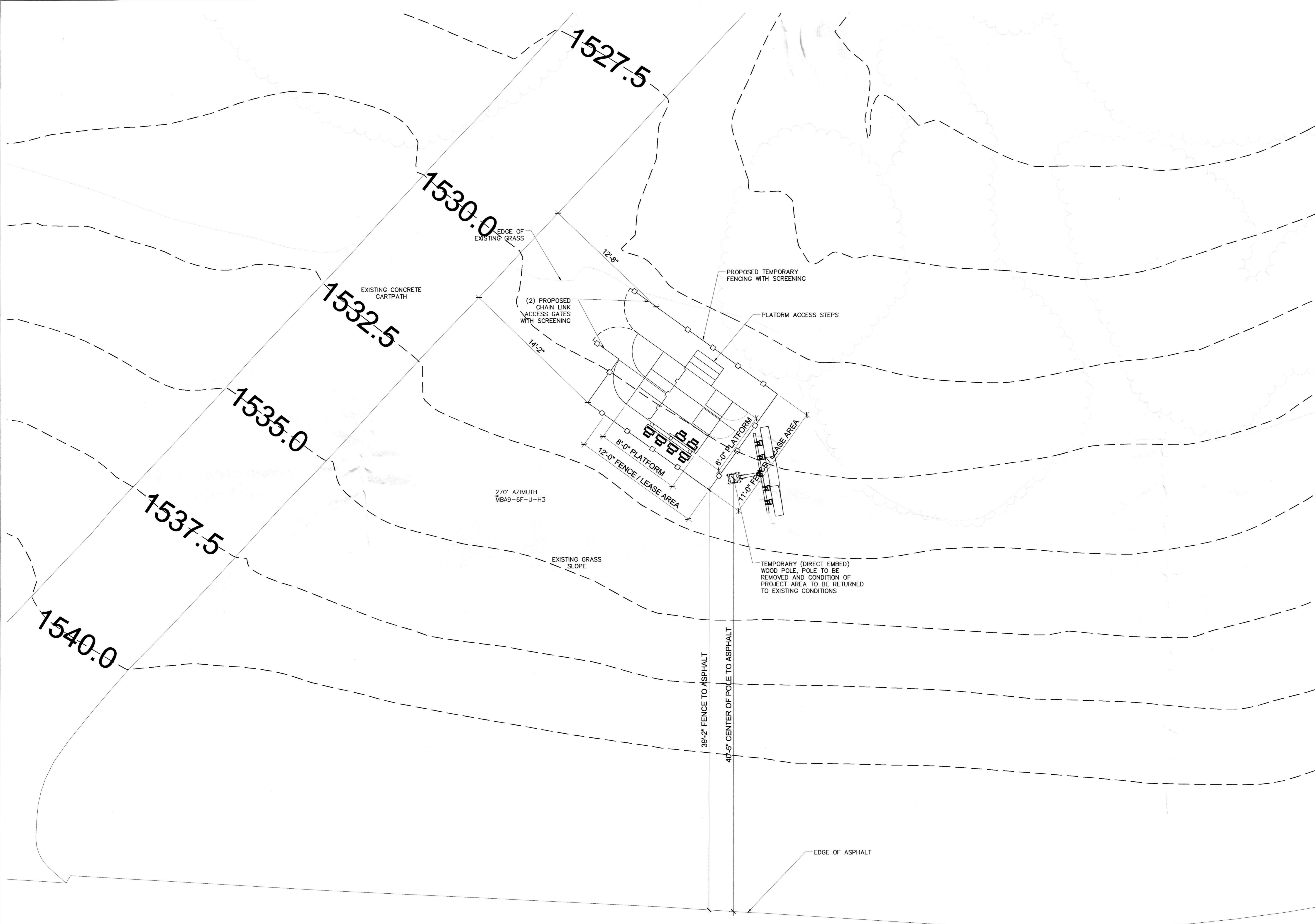
JURISDICTION APPROVAL

STIPULATION SET
 RETAIN FOR RECORDS
 APPROVED

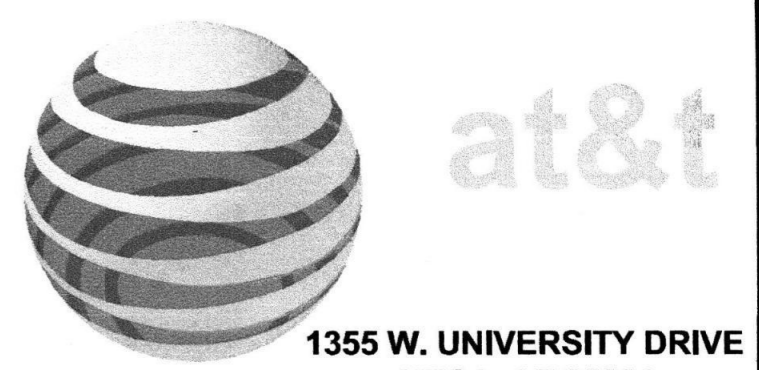
11-25-14 KN
 DATE INITIALS

SHEET NUMBER

Z-1



CLIENT



1355 W. UNIVERSITY DRIVE
MESA, AZ 85201


PLANS PREPARED BY



architecture / project management
10245 E. Via Linda, Scottsdale, AZ 85258
ph: 480 451 9609 fax: 480 451 9608
e mail: corp@ydcoffice.com

SEAL

This drawing is copyrighted and the property of Young Design Corporation (YDC) & produced solely by YDC and affiliates. reproduction or use of this drawing and/or the information contained hereon is forbidden without written permission by Young Design Corporation.



19382
RONALD C. YOUNG
LICENSED PROFESSIONAL ENGINEER
ARIZONA U.S.A.
EXP. 12/31/14

THIS DOCUMENT CONTAINS AN ELECTRONIC SIGNATURE PURSUANT TO A.R.S. TITLE 41 AND TITLE 44. IT IS A VIOLATION FOR ANY PERSON, UNLESS UNDER THE DIRECT SUPERVISION OF THE REGISTRANT, TO MODIFY THIS DOCUMENT IN ANY WAY.

NO.	DATE	DESCRIPTION
1	9/2/14	REVIEW
2	10/9/14	REVIEW
3	10/21/14	SUBMITTAL

ARCHITECTS JOB NO.
YDC-6087

PROJECT INFORMATION

WASTE MANAGEMENT OPEN #2

15TH GREEN
SCOTTSDALE, AZ 85255

SHEET TITLE

ENLARGED PLAN

JURISDICTION APPROVAL

STIPULATION SET
RETAIN FOR RECORDS
APPROVED

11-25-14 *KN*
DATE INITIALS

SHEET NUMBER
Z-2

1 ENLARGED SITE PLAN
Z-2

SCALE: 1/4" = 1'-0"



SCALE: 1/4" = 1'-0"

SEAL
This drawing is copyrighted and the property of Young Design Corporation (YDC) & produced solely by YDC and affiliates. reproduction or use of this drawing and/or the information contained hereon is forbidden without written permission by Young Design Corporation.



THIS DOCUMENT CONTAINS AN ELECTRONIC SIGNATURE PURSUANT TO A.R.S. TITLE 41 AND TITLE 44. IT IS A VIOLATION FOR ANY PERSON, UNLESS UNDER THE DIRECT SUPERVISION OF THE REGISTRANT, TO MODIFY THIS DOCUMENT IN ANY WAY.

NO.	DATE	DESCRIPTION
1	9/2/14	REVIEW
2	10/9/14	REVIEW
3	10/21/14	SUBMITTAL

ARCHITECTS JOB NO.
YDC-6087

PROJECT INFORMATION

WASTE MANAGEMENT OPEN #2

15TH GREEN
SCOTTSDALE, AZ 85255

SHEET TITLE

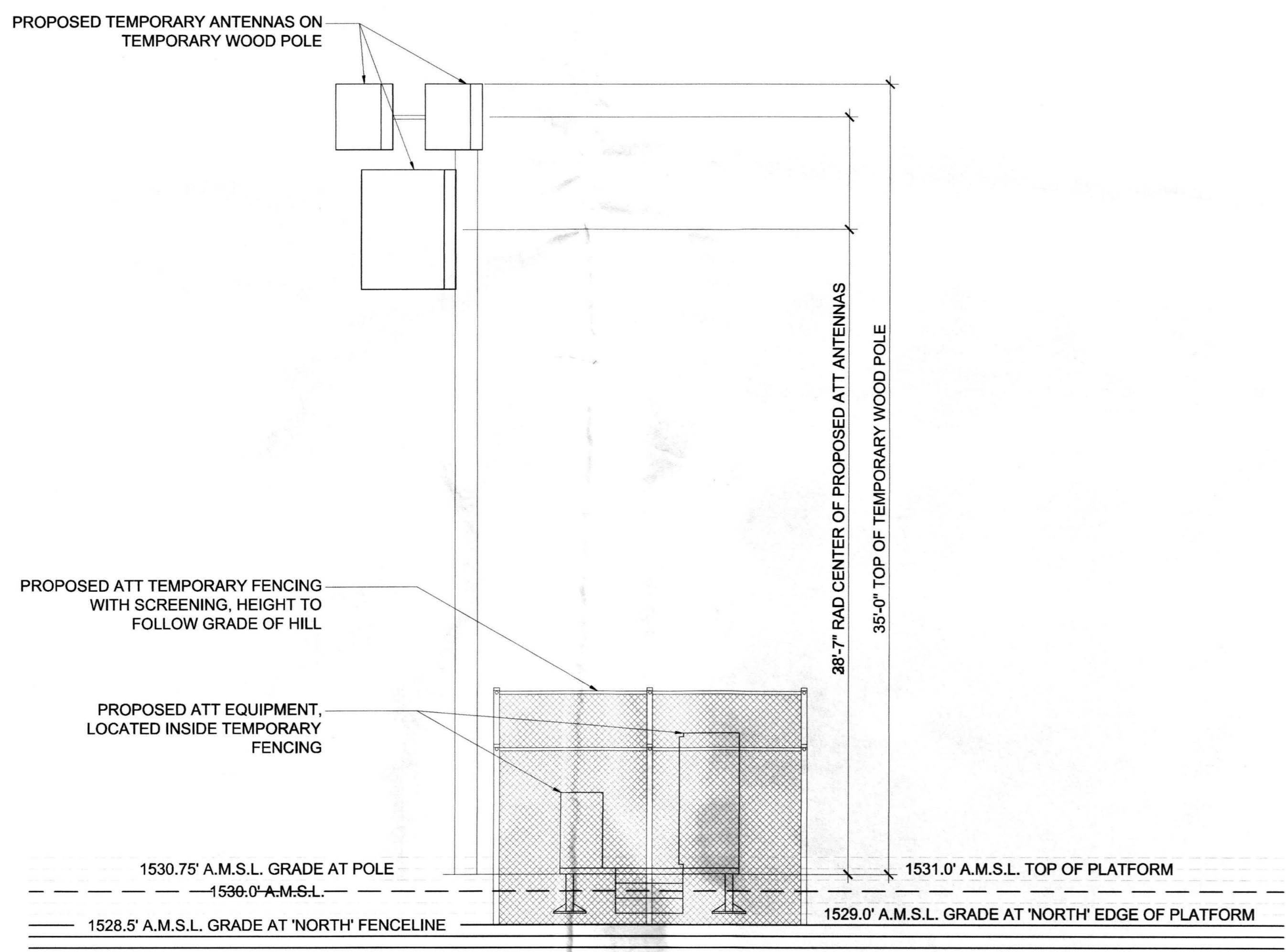
ELEVATIONS

JURISDICTION APPROVAL

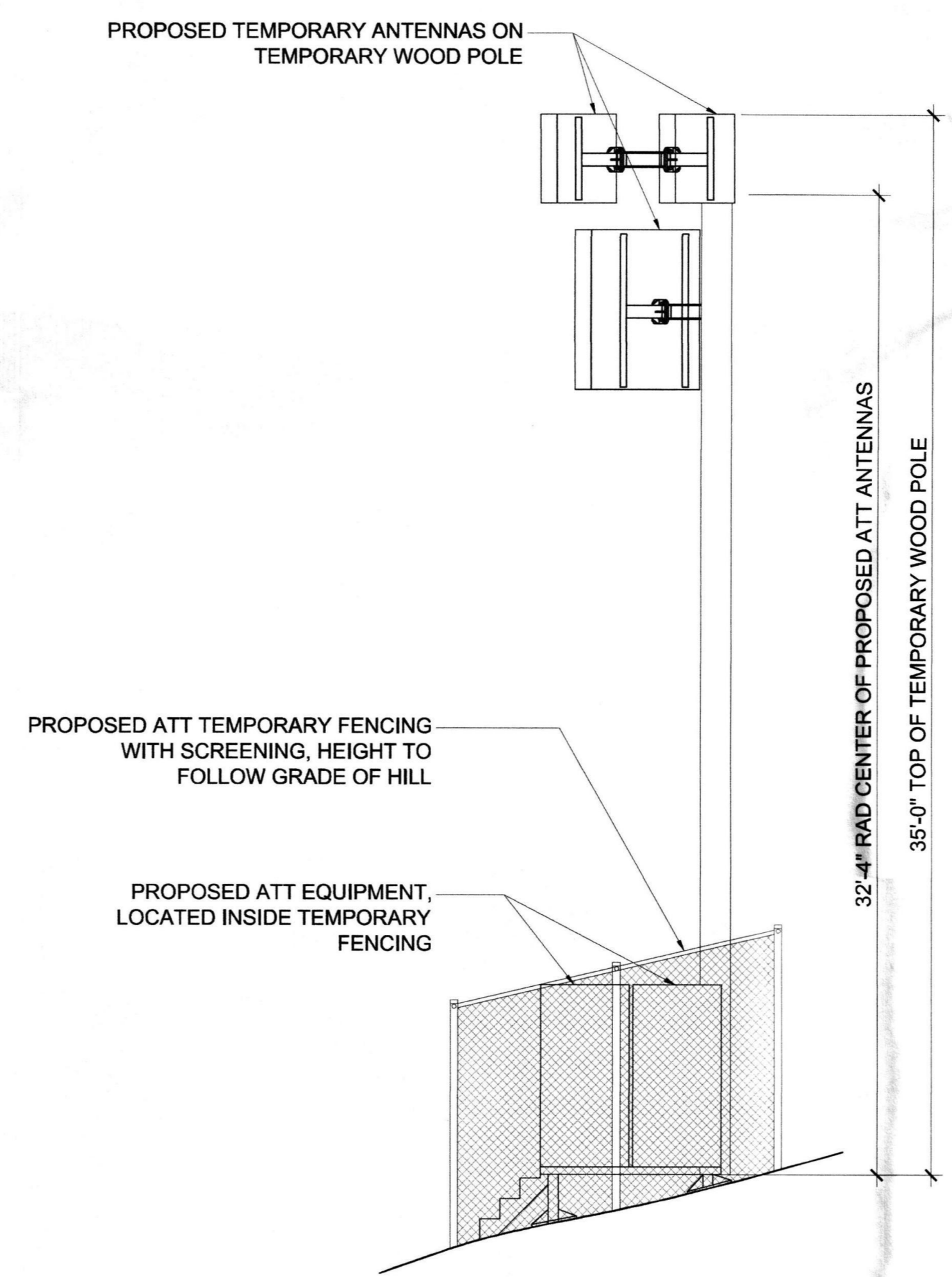
STIPULATION SET
RETAIN FOR RECORDS
APPROVED

11-25-14 *KN*
DATE INITIALS

SHEET NUMBER
Z-3



1 **NORTHEAST ELEVATION**
Z-3 SCALE: 1/4" = 1'-0"



1 **NORTHWEST ELEVATION**
Z-3 SCALE: 1/4" = 1'-0"

**RF Data Sheet
Zoning and Construction**

Version: **6**

Site # **4552-AA** Disaster Recovery Priority:
 Site Name: Waste Management_UMTS Cabinet 2
 Site Address: North East Corner of Princess Dr and Hayden Rd
 City: Scottsdale State: Arizo Zip: 85255
 Type of Site: Cow Latitude: 33 38 36.0 N Longitude: 111 54 25.1 W
 Software (Google): NAD 83
 Microcell Macrocell Site Equipment Type: MACRO Cell Config Type: Sectorized

GSM BSC: GSM Switch Name: LAC:
 RBS Vendor: NOKIA Number of GSM cabinets: 0 Number of GSM T1: 0
 GSM ID (CID minus sector): Equipment Type:

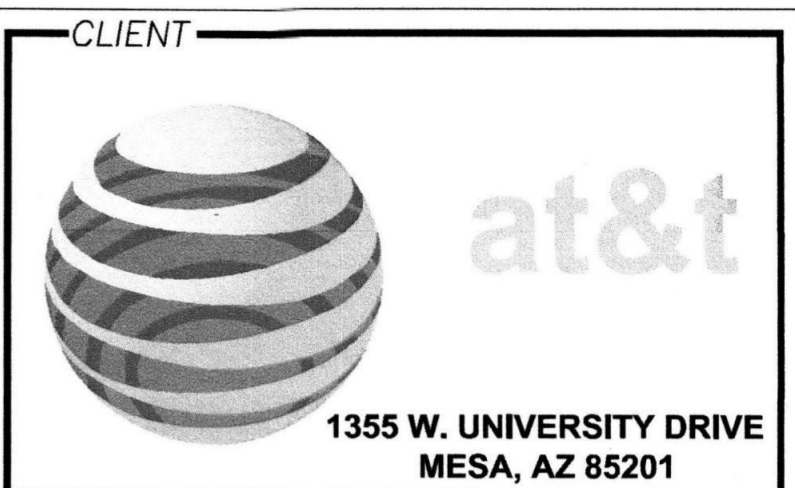
UMTS UMTS Switch Name: AZPHU4552 LAC: 48996 RNC: PHIXAZMACRAR02
 RBS Vendor: Lucent UMTS ID (CID minus sector): 4552 Equipment Type: Lucent Macro Indoor

Sector Number	Antenna Model	Azimuth	Mech. Down Tilt	Electrical Down Tilt	Antenna Length (in)	Rad Center	Antennas per Sector	TMA/GMA Model
A	2XSNPA2010F	200	0	0	58	0.1	1	COAX: 75 FL 240
1900 MHz ARGUS		Cell ID	Scram Code					
Soft Sectors: L, X		ModemGroup#:						
B	2XSNPA2010F	210	0	0	58	0.1	1	COAX: 75 FL 7/8"
1900 MHz ARGUS		Cell ID	Scram Code					
Soft Sectors: M, Y		ModemGroup#:						
C	2XSNPA2010F	220	0	0	58	0.1	1	COAX: 75 FL 7/8"
1900 MHz ARGUS		Cell ID	Scram Code					
Soft Sectors: N, Z		ModemGroup#:						

Number of UMTS cabinets: 1 Number of Initial UMTS T1: Number of Initial UMTS Carriers: 3 UMTS T1 protection kit
 Number of UCU Cards: 12 Number of New UMTS T1: Number of New UMTS Carriers: UMTS DS3
 ETTCS Needed UMTS # of UCU Cards Modem Group 1: 8 UMTS SIAD/DS3 Kit
 ETTCS Bandwidth UMTS Mb/s: 200 # of UCU Cards Modem Group 2: 4 UMTS Number of PVC:

LTE

Sector Number	Antenna Model	Azimuth	Mech. Down Tilt	Electrical Down Tilt	Antenna Length (in)	Rad Center	Antennas per Sector	TMA/GMA Model
A	SUPX0805F	200	0	0	75 FL	50	0.2	7/8" diameter
700 MHz Argus		2 COAX:						
B	SUPX0805F	215	0	0	75 FL	50	0.2	7/8" diameter
700 MHz Argus		2 COAX:						
C	SUPX0805F	230	0	0	75 FL	50	0.2	7/8" diameter
700 MHz Argus		2 COAX:						



PLANS PREPARED BY
Young design corp
 architecture / project management
 10245 E. Via Linda, Scottsdale, AZ 85258
 ph: 480 451 9609 fax: 480 451 9608
 e mail: corp@ydcoffice.com

SEAL
 This drawing is copyrighted and the property of Young Design Corporation (YDC) & produced solely by YDC and affiliates. reproduction or use of this drawing and/or the information contained hereon is forbidden without written permission by Young Design Corporation.

 THIS DOCUMENT CONTAINS AN ELECTRONIC SIGNATURE PURSUANT TO A.R.S. TITLE 41 AND TITLE 44. IT IS A VIOLATION FOR ANY PERSON, UNLESS UNDER THE DIRECT SUPERVISION OF THE REGISTRANT, TO MODIFY THIS DOCUMENT IN ANY WAY.

NO.	DATE	DESCRIPTION
1	9/2/14	REVIEW
2	10/9/14	REVIEW
3	10/21/14	SUBMITTAL

ARCHITECTS JOB NO.
YDC-6087

PROJECT INFORMATION
WASTE MANAGEMENT OPEN #2
 15TH GREEN
 SCOTTSDALE, AZ 85255

SHEET TITLE
4552-TD RFDS

JURISDICTION APPROVAL

SHEET NUMBER
Z-4

RF Data Sheet
Zoning and Construction

Version: **3**

Site # **4560-AA** Disaster Recovery Priority:
 Site Name: Waste_Management UMTS Cabinet 3
 Site Address: North East Corner of Princess Dr and Hayden Rd
 City: Scottsdale State: AZ Zip:
 Type of Site: Microcell Macrocell Site Equipment Type: MACRO Cell Config Type: Sectorized
 Latitude: 33 38 36.0 N Longitude: 111 54 25.1 W
 Software (Google): 33.64333 111.90697 NAD 83

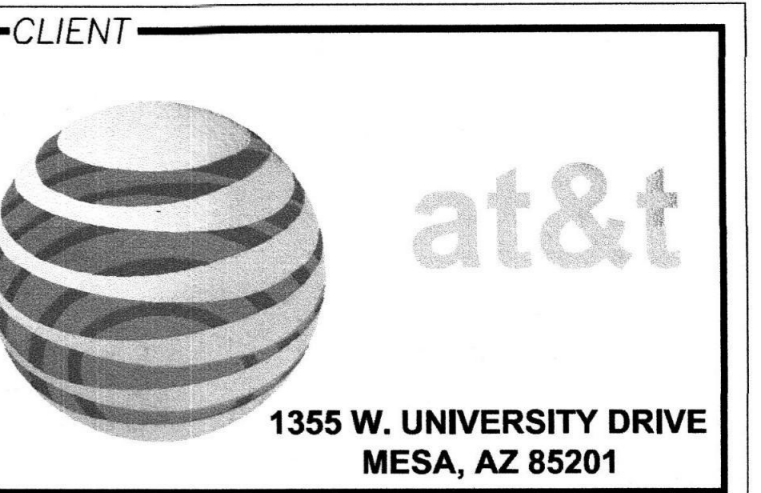
GSM BSC: GSM Switch Name: LAC:
 RBS Vendor: Number of GSM cabinets: Number of GSM T1:
 GSM ID (CID minus sector): Equipment Type: Ultra Site

UMTS UMTS Switch Name: AZPHU4560 LAC: 48996 RNC: PHNXAZMACRAR02
 RBS Vendor: ALU UMTS ID (CID minus sector): 4560 Equipment Type: Lucent Macro Outdoo

Sector Number	Antenna Model	Azimuth	Mech. Down Tilt	Electrical Down Tilt	Antenna Length (in)	Rad. Center	Antennas per Sector	TMA/GMA Model	
A	2X09PA2010F	230	0	0	0	58	0.1		
1900 MHz	ARGUS	Cell ID	Scram Code	1 COAX: 75 FL. 7/8"					
Soft Sectors: L, X ModemGroup#:									
B	2X09PA2010F	240	0	0	0	58	0.1		
1900 MHz	ARGUS	Cell ID	Scram Code	1 COAX: 75 FL. 7/8"					
Soft Sectors: M, Y ModemGroup#:									
C	2X09PA2010F	250	0	0	0	58	0.1		
1900 MHz	ARGUS	Cell ID	Scram Code	1 COAX: 75 FL. 7/8"					
Soft Sectors: N, Z ModemGroup#:									
Number of UMTS cabinets: 1			Number of Initial UMTS T1:			Number of Initial UMTS Carriers: 3			<input type="checkbox"/> UMTS T1 protection kit
Number of UCU Cards: 12			Number of New UMTS T1:			Number of New UMTS Carriers:			<input type="checkbox"/> UMTS DS3
<input checked="" type="checkbox"/> ETTCS Needed UMTS			# of UCU Cards Modem Group 1: 8			<input checked="" type="checkbox"/> UMTS SIAD/DS3 Kit			
ETTCS Bandwidth UMTS Mb/s: 60			# of UCU Cards Modem Group 2: 4			UMTS Number of PVC:			

LTE

Sector Number	Antenna Model	Azimuth	Mech. Down Tilt	Electrical Down Tilt	Antenna Length (in)	Rad. Center	Antennas per Sector	TMA/GMA Model
A	5UPX0805F	245	0	0	0	50	0.2	
700 MHz	Argus	2 COAX:		75 FL.		7/8" diameter		
B	5UPX0805F	260	0	0	0	50	0.2	
700 MHz	Argus	2 COAX:		75 FL.		7/8" diameter		
C	5UPX0805F	275	0	0	0	50	0.2	
700 MHz	Argus	2 COAX:		75 FL.		7/8" diameter		



PLANS PREPARED BY
Young design corp
 architecture / project management
 10245 E. Via Linda, Scottsdale, AZ 85258
 ph: 480 451 9609 fax: 480 451 9608
 e mail: corp@ydcoffice.com

SEAL
 This drawing is copyrighted and the property of Young Design Corporation (YDC) & produced solely by YDC and affiliates. reproduction or use of this drawing and/or the information contained hereon is forbidden without written permission by Young Design Corporation.



THIS DOCUMENT CONTAINS AN ELECTRONIC SIGNATURE PURSUANT TO A.R.S. TITLE 41 AND TITLE 44. IT IS A VIOLATION FOR ANY PERSON, UNLESS UNDER THE DIRECT SUPERVISION OF THE REGISTRANT, TO MODIFY THIS DOCUMENT IN ANY WAY.

NO.	DATE	DESCRIPTION
1	9/2/14	REVIEW
2	10/9/14	REVIEW
3	10/21/14	SUBMITTAL

ARCHITECTS JOB NO.
YDC-6087

PROJECT INFORMATION
WASTE MANAGEMENT OPEN #2
 15TH GREEN
 SCOTTSDALE, AZ 85255

SHEET TITLE
4560-AA RFDS

JURISDICTION APPROVAL

SHEET NUMBER
Z-5

RF Data Sheet
Zoning and Construction

Version: **8**

Site # **2322-AA**

Disaster Recovery Priority:

Site Name: Waste Management _UMTS Cabinet 1

Site Address: NE corner of Princess Dr. and Hayden Rd.

New Site Trident Number:

City: Scottsdale State: Arizo Zip

Type of Site: Cow Latitude: 33 38 36.0 N Longitude: 111 54 25.1 W 33.64333 111.90697 GPS NAD 83

Microcell Macrocell Site Equipment Type: MACRO Cell Config Type: Sectorized

GSM BSC: GSM Switch Name: LAC:

RBS Vendor: Number of GSM cabinets: Number of GSM T1:

GSM ID (CID minus sector): Equipment Type: Ultra Site

UMTS

UMTS Switch Name: AZPHU2322 LAC: 48996 RNC: PHNXAZMACRAR02
RBS Vendor: Lucent UMTS ID (CID minus sector): 2322 Equipment Type: Lucent Macro Indoor

Sector Number	Antenna Model	Azimuth	Mech. Down Tilt	Electrical Down Tilt	Antenna Length (in)	Rad Center	Antennas per Sector	TMA/GMA Model
A	2X9NPA2010F	170	0	0	0	58	0.5	
1900 MHz	ARGUS	Cell ID	Scram Code 160	1 COAX: 65 FL 7/8"				

Soft Sectors: L, X ModemGroup#:

B	2X9NPA2010F	180	0	0	0	58	0.5	
1900 MHz	ARGUS	Cell ID	Scram Code 162	1 COAX: 65 FL 7/8"				

Soft Sectors: M, Y ModemGroup#:

C	2X9NPA2010F	190	0	0	0	58	0.5	
1900 MHz	ARGUS	Cell ID	Scram Code 170	1 COAX: 65 FL 7/8"				

Soft Sectors: N, Z ModemGroup#:

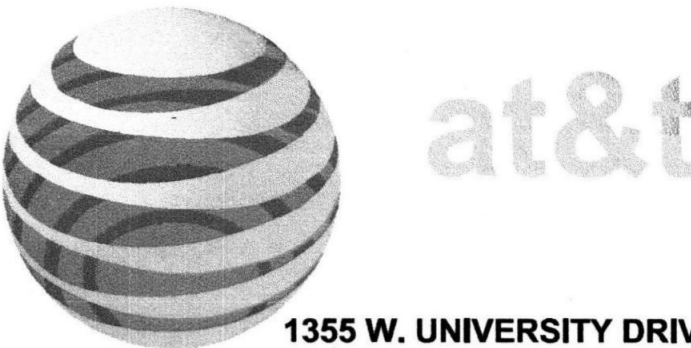
Number of UMTS cabinets: 1 Number of Initial UMTS T1: 14 Number of Initial UMTS Carriers: 3 UMTS T1 protection kit
Number of UCU Cards: 12 Number of New UMTS T1: Number of New UMTS Carriers: UMTS DS3

ET TCS Needed UMTS # of UCU Cards Modem Group 1: 8 UMTS SIADDS3 Kit
ET TCS Bandwidth UMTS Mbit/s: 200 # of UCU Cards Modem Group 2: 4 UMTS Number of PVC: 7

LTE


Sector Number	Antenna Model	Azimuth	Mech. Down Tilt	Electrical Down Tilt	Antenna Length (in)	Rad Center	Antennas per Sector	TMA/GMA Model
A	SUPX0805F	155	0	0	0	50	0.2	
700 MHz	Argus	2 COAX:		65 FL	7/8" diameter			
B	SUPX0805F	170	0	0	0	50	0.2	
700 MHz	Argus	2 COAX:		65 FL	7/8" diameter			
C	SUPX0805F	185	0	0	0	50	0.2	
700 MHz	Argus	2 COAX:		65 FL	7/8" diameter			

CLIENT




1355 W. UNIVERSITY DRIVE
MESA, AZ 85201

PLANS PREPARED BY



architecture / project management
10245 E. Via Linda, Scottsdale, AZ 85258
ph: 480 451 9609 fax: 480 451 9608
e mail: corp@ydcoffice.com

SEAL



19382
RONALD C. YOUNG
Professional Engineer
STATE OF ARIZONA U.S.A.
EXP. 12/31/14

THIS DOCUMENT CONTAINS AN ELECTRONIC SIGNATURE PURSUANT TO A.R.S. TITLE 41 AND TITLE 44. IT IS A VIOLATION FOR ANY PERSON, UNLESS UNDER THE DIRECT SUPERVISION OF THE REGISTRANT, TO MODIFY THIS DOCUMENT IN ANY WAY.

NO.	DATE	DESCRIPTION
1	9/2/14	REVIEW
2	10/9/14	REVIEW
3	10/21/14	SUBMITTAL

ARCHITECTS JOB NO.
YDC-6087

PROJECT INFORMATION

WASTE MANAGEMENT OPEN #2

15TH GREEN
SCOTTSDALE, AZ 85255

SHEET TITLE

2322-AA RFDS

JURISDICTION APPROVAL

SHEET NUMBER
Z-6

Product Specifications

COMMSCOPE®

POWERED BY ANDREW

5NPX1006F

Argus® Multibeam Antenna, 1710-2170 MHz, 5x 10-14° horizontal beamwidth, fixed electrical tilt

ARGUS

Electrical Specifications

Frequency Band, MHz	1710-1920	1920-2170
Gain, dBi	22.0	23.0
Beamwidth, Horizontal, degrees	12	11
Beamwidth, Vertical, degrees	12.0	11.0
Beam Tilt, degrees	6	6
USLS, dB	18	18
Front-to-Back Ratio at 180°, dB	30	30
Isolation, dB	25	25
VSWR Return Loss, dB	1.43 15.0	1.43 15.0
PIM, 3rd Order, 2 x 20 W, dBc	-150	-150
Input Power per Port, maximum, watts	300	300
Polarization	+45°	+45°
Impedance	50 ohm	50 ohm

General Specifications

Antenna Brand	Argus®
Antenna Type	DualPol® multibeam
Band	Single band
Brand	Argus® DualPol®
Operating Frequency Band	1710 - 2170 MHz

Mechanical Specifications

Color	Gray
Lightning Protection	dc Ground
Radome Material	ASA, UV stabilized
RF Connector Interface	7-16 DIN Female
RF Connector Location	Bottom
RF Connector Quantity, total	10
Wind Loading, maximum	1060.0 N @ 160 km/h 238.3 lbf @ 160 km/h

Dimensions

Depth	250.0 mm 9.8 in
Length	890.0 mm 35.0 in
Width	865.0 mm 34.1 in
Net Weight	30.0 kg 66.1 lb

©2014 ComScope, Inc. All rights reserved. All trademarks identified by ® or ™ are registered trademarks, respectively, of ComScope. All specifications are subject to change without notice. See www.comscope.com for the most current information. Revised: June 11, 2014

Page 1 of 2
July 9, 2014

Product Specifications

COMMSCOPE®

POWERED BY ANDREW

5UPX0805F

Argus® Multibeam Antenna, 698-894 MHz, 5 x 13.5° horizontal beamwidth, fixed electrical tilt. Ships with two T-041-GL-E mounting kits.

ARGUS

Electrical Specifications

Frequency Band, MHz	698-894
Gain, dBi	20.0
Beamwidth, Horizontal, degrees	14
Beamwidth, Vertical, degrees	13.6
Beam Tilt, degrees	6
USLS, dB	18
Front-to-Back Ratio at 180°, dB	25
Isolation, dB	25
VSWR Return Loss, dB	1.43 15.0
PIM, 3rd Order, 2 x 20 W, dBc	-150
Input Power per Port, maximum, watts	300
Polarization	+45°
Impedance	50 ohm

General Specifications

Antenna Brand	Argus®
Antenna Type	DualPol® multibeam
Band	Single band
Brand	Argus® DualPol®
Operating Frequency Band	698 - 894 MHz
Number of Ports	10

Mechanical Specifications

Connector Interface	7-16 DIN Female
Connector Location	Bottom
Connector Quantity, total	10
Lightning Protection	dc Ground
Radome Material	Polyester fiberglass pultrusion
Wind Loading, maximum	2700.0 N @ 160 km/h 607.0 lbf @ 160 km/h
Wind Speed, maximum	140.0 km/h 87.0 mph

Dimensions

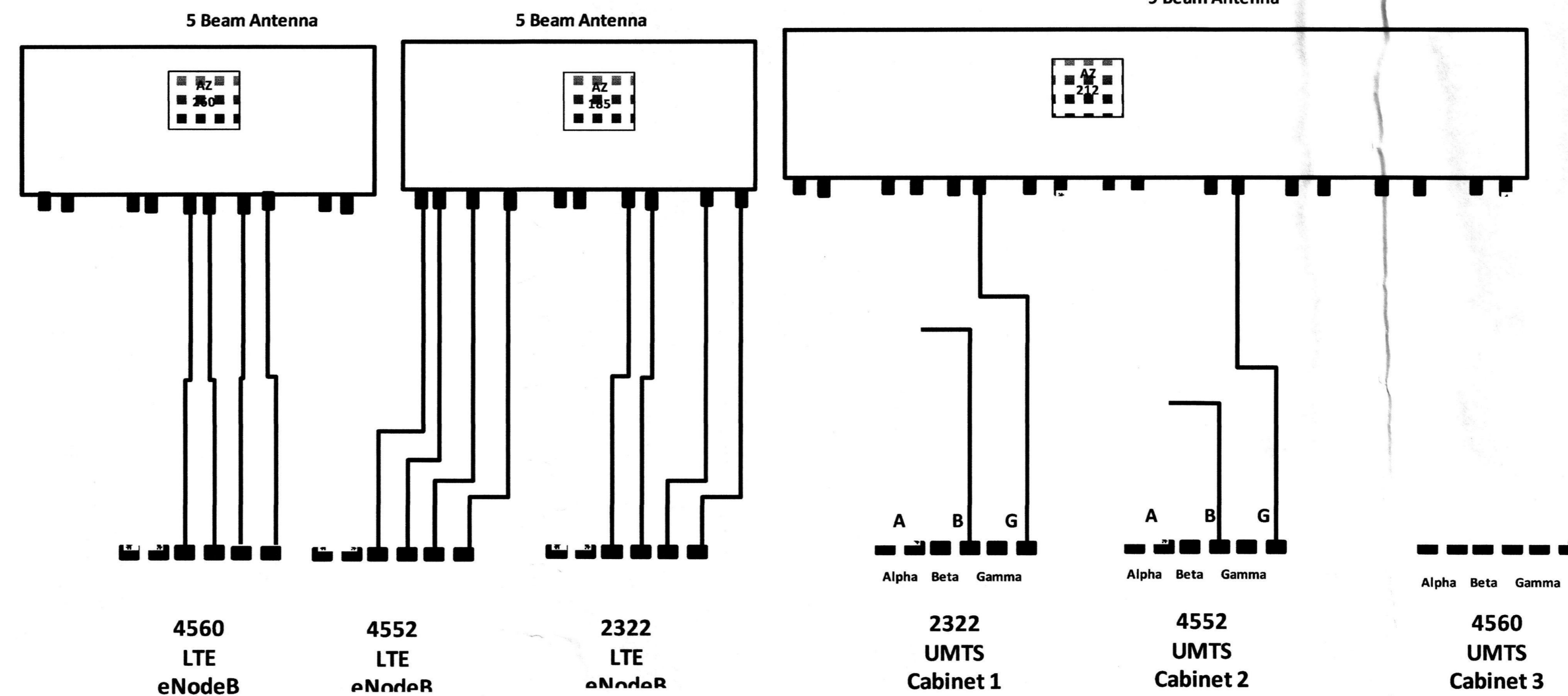
Depth	282.0 mm 11.1 in
Length	1617.0 mm 63.7 in
Width	1574.0 mm 62.0 in
Net Weight	85.0 kg 187.4 lb

Included Products

T-041-GL-E — Argus® Adjustable Tilt Pipe Mounting Kit for 2.0"-4.5" (50-115mm) OD round members for panel antennas. Includes 2 clamp sets.

©2014 ComScope, Inc. All rights reserved. All trademarks identified by ® or ™ are registered trademarks, respectively, of ComScope. All specifications are subject to change without notice. See www.comscope.com for the most current information. Revised: October 9, 2013

Page 1 of 2
January 2, 2014



Antenna / Coax:
 UMTS: (1) Argus 9 beam / 9 Coax (Please connect to the Low Beam)
 LTE: (2) 5 Beam Antenna / 10 Coax

CLIENT

1355 W. UNIVERSITY DRIVE
MESA, AZ 85201

PLANS PREPARED BY

architecture / project management
 10245 E. Via Linda, Scottsdale, AZ 85258
 ph: 480 451 9609 fax: 480 451 9608
 e mail: corp@ydcoffice.com

SEAL
 This drawing is copyrighted and the property of Young Design Corporation (YDC) & produced solely by YDC and affiliates. reproduction or use of this drawing and/or the information contained hereon is forbidden without written permission by Young Design Corporation.

19382 DONALD C. YOUNG
 10/2/14
 ARIZONA U.S.A.
 EXP. 12/31/14

THIS DOCUMENT CONTAINS AN ELECTRONIC SIGNATURE PURSUANT TO A.R.S. TITLE 41 AND TITLE 44. IT IS A VIOLATION FOR ANY PERSON, UNLESS UNDER THE DIRECT SUPERVISION OF THE REGISTRANT, TO MODIFY THIS DOCUMENT IN ANY WAY.

NO.	DATE	DESCRIPTION
1	9/2/14	REVIEW
2	10/9/14	REVIEW
3	10/21/14	SUBMITTAL

ARCHITECTS JOB NO.
YDC-6087

PROJECT INFORMATION

WASTE MANAGEMENT OPEN #2

15TH GREEN
SCOTTSDALE, AZ 85255

SHEET TITLE

PLUMBING DIAGRAM AND DETAILS

JURISDICTION APPROVAL

SHEET NUMBER
Z-7