

Simulations
Records Packet
Photos
All Graphics (no plans)



Dolce Salon & Spa at Scottsdale Quarter

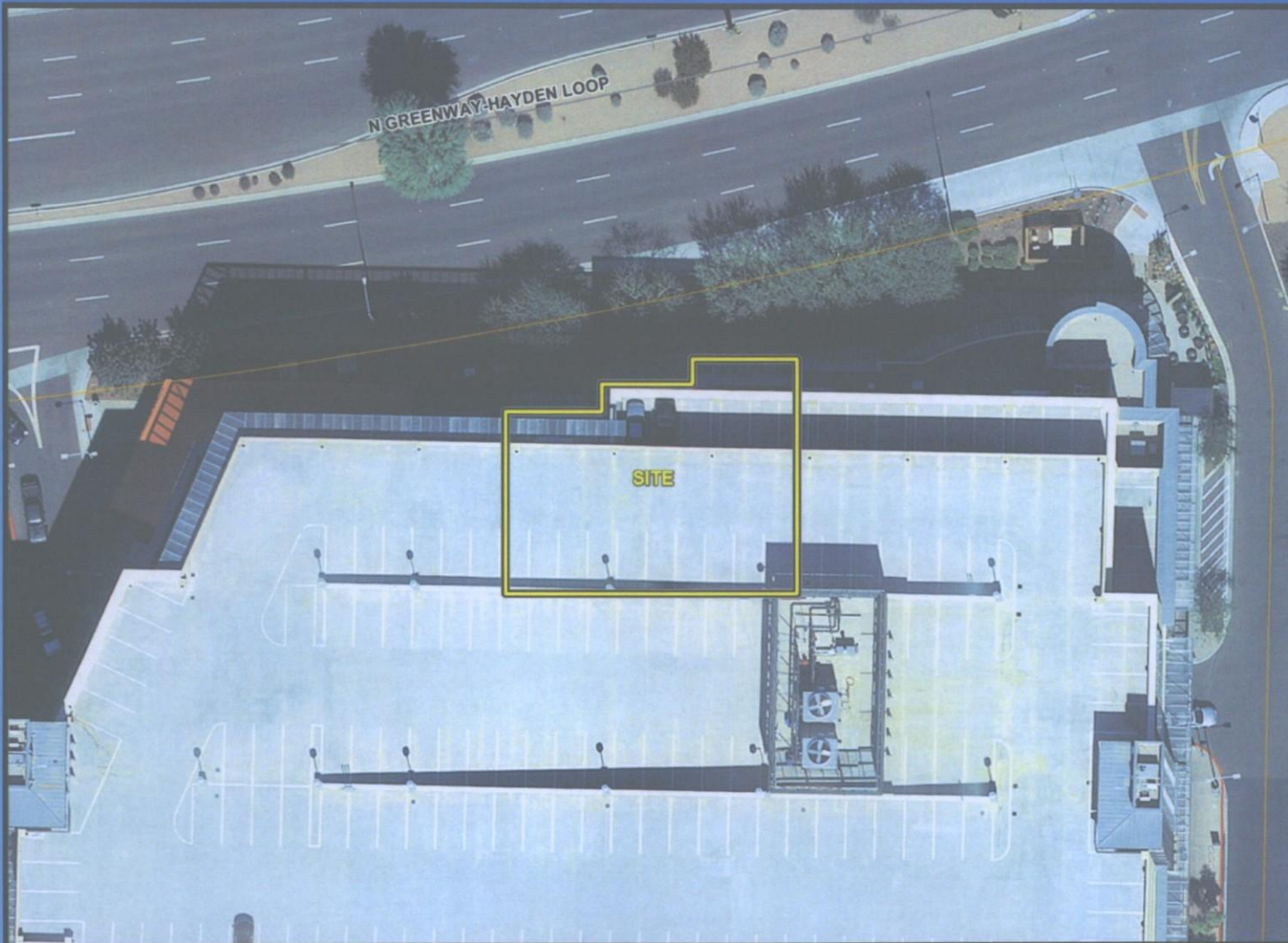
34-DR-2013

Development Review Board

Coordinator: Bryan Cluff

Date: August 15, 2013

Dolce Salon & Spa at Scottsdale Quarter



CLOSE AERIAL

34-DR-2013

Dolce Salon & Spa at Scottsdale Quarter



ZONING

34-DR-2013

Dolce Salon & Spa at Scottsdale Quarter



OVERVIEW

34-DR-2013

Dolce Salon & Spa at Scottsdale Quarter



ELEVATIONS EXISTING

34-DR-2013

Dolce Salon & Spa at Scottsdale Quarter



ELEVATIONS PROPOSED

34-DR-2013

Dolce Salon & Spa at Scottsdale Quarter



- Discourage stylizing buildings in an attempt to identify a particular tenant or user
- Encourage solid/single color awnings
- Encourage function



Dolce Salon & Spa at Scottsdale Quarter



- Based on the direction provided in the City of Scottsdale Commercial Design Guidelines, staff recommends that the DRB deny the request for striped awnings with the intent of utilizing the existing shade canopies.

OR

- Approve, with a stipulation that a solid color awning be used.

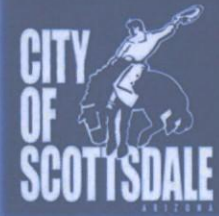
Dolce Salon & Spa at Scottsdale Quarter



ELEVATIONS PROPOSED

34-DR-2013

Dolce Salon & Spa at Scottsdale Quarter



Dolce Salon & Spa at Scottsdale Quarter



Dolce Salon & Spa at Scottsdale Quarter



Mayo Clinic

