

Exterior Building Color & Material Samples

Color Drawdowns

Drainage Reports

TIMA

Abbreviated Water & Sewer Need Report

Archaeological Resources

Airport Vicinity Development Checklist

Parking Study

Trip Generation Comparison

Parking Master Plan

Water Study

Wastewater Study

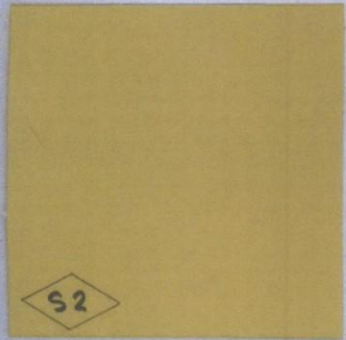
Stormwater Waiver Application



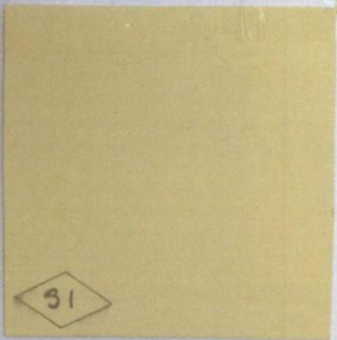
RI
PI



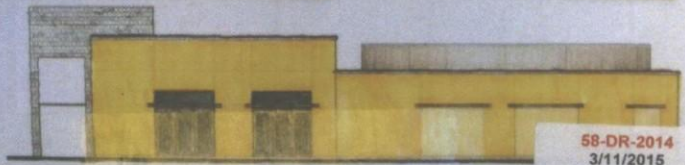
MI



S2



S1



58-DR-2014
3/11/2015

SITE IMPROVEMENT
7025 RETAIL
7025 East First Avenue
Scottsdale, Arizona 85251
58-DR-2014
12/17/2014

PRELIMINARY
SIGN REVIEW
Andrea Lee
Forman
AZ 20118

Copyright ©2015 by Forman Architects
LLC. This drawing, as an instrument of
professional service, is and shall remain
the property of Forman Architects LLC.
No part of this drawing may be
reproduced, stored in a retrieval system
or transmitted in any form, without the
prior written approval of Forman
Architects LLC.



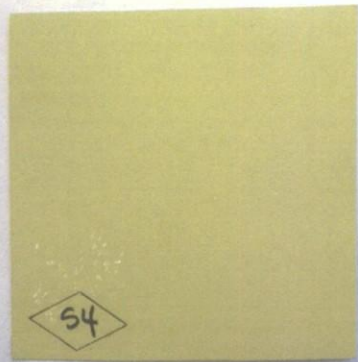
FORMAN
ARCHITECTS
L.L.C.

4739 East Virginia Avenue
Phoenix, Arizona 85008
T 602/456-9132
M 602/339-9084

info@formanarchitects.com

DO NOT SCALE
DRAWINGS
JOB NO: 1305
DATE: 10/12/14
REV: 3/3/15

E

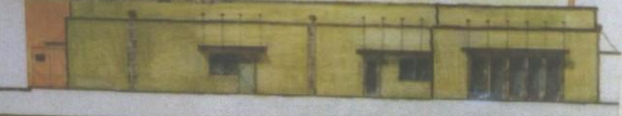
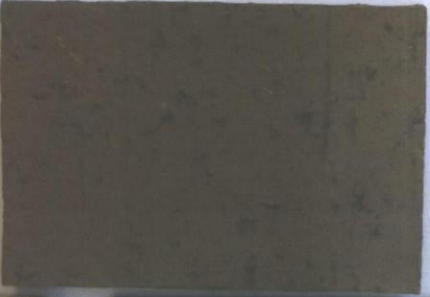


S4



S3

BI
PI
MI
AT STEEL



58-DR-2014
3/11/2015

SITE IMPROVEMENT
7025 RETAIL
7025 East First Avenue
Scottsdale, Arizona 85251
58-DR-2014
12/17/2014

PRELIMINARY
DESIGN REVIEW
Andrea Lee
Forman
AZ 20118

Copyright ©2015 by Forman Architects
LLC. This drawing, as an instrument of
professional service, is and shall remain
the property of Forman Architects LLC.
No part of this drawing may be
reproduced, stored in a retrieval system
or transmitted in any form, without the
prior written approval of Forman
Architects LLC.



FORMAN
ARCHITECTS
L.L.C.

4739 East Virginia Avenue
Phoenix, Arizona 85008
T 602/456-9132
M 602/339-9084

info@formanarchitects.com

DO NOT SCALE
DRAWINGS
JOB NO: 1305
DATE: 10/12/14
REV: 3/3/15

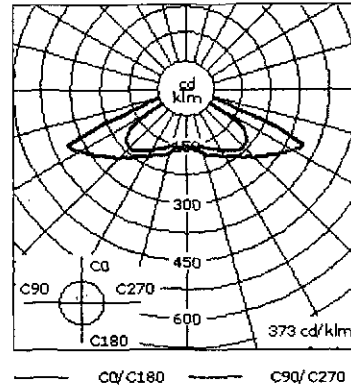
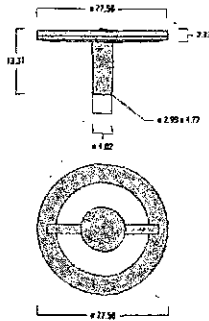
W

CFT540 LED (700mA)

659-6724

2/2

we-ef



Additional Specifications

MATERIALS:

Marine grade aluminum alloy. 5CE superior protection, including PCS hardware. PMMA RFC® Reflection Free Contour technology. Silicone rubber gasket.

ELECTRICAL:

Integral [ECG] electronic LED driver, in 120 or 277 volt. Specify voltage. Ambient temperature: $T_a < 25^\circ \text{C}$.

For complete range of dimming options, contact WE-EF factory.

Luminaire is factory wired and supplied with 20 feet of black, 3 conductor, flexible SEOW cord for power connection at pole base hand hole. Specify other lengths if required.

MOUNTING:

Suitable for pole mounting. Refer to mounting accessories for complete range of accessories. Weight: 29.3 lbs. E.P.A.: 0.8 sq ft.

FINISH:

Powder coat finish in Black RAL9004, White RAL9016, and Grey Metallic RAL9007. Specify finish. Consult WE-EF color chart for other color options.

LISTINGS:

UL, c UL listed. Suitable for Wet locations. International Protection Classification: IP66.

OLV334 LED

622-6723


3/3



Mounting accessories

Surface Collar

Missing Image

 **622-9321** Surface Collar

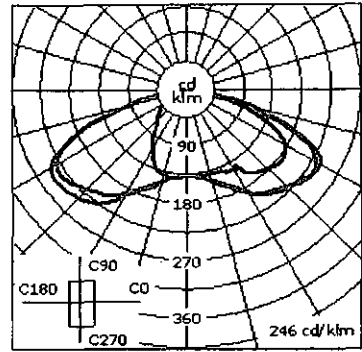
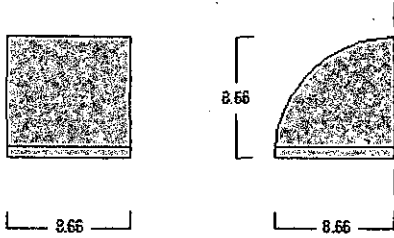
WE-EF LIGHTING USA LLC

410-D Keystone Drive | Warrendale PA 15086 | U.S.A. | Tel +1 724 742 0030 | Fax +1 724 742 0035 | info.usa@we-ef.com | www.we-ef.com

OLV334 LED

622-6723

2/3



Additional Specifications

MATERIALS:

Luminaire body and lens frame constructed in die cast aluminum. Tempered glass lens. PCS hardware. Silicone rubber gasket. Factory-installed LED circuit board. LED boards can be easily removed for upgrading. PMMA LED lens array.

ELECTRICAL:

Integral [ECG] electronic LED driver in 120 or 277 volt. Specify voltage.

Ambient Temperature: $T_a < 25^\circ \text{C}$

MOUNTING:

Suitable for installation over a standard 4" recessed junction box. Luminaire can be mounted as an uplight, or downlight. Weight: 14.6 lbs.

FINISH:

Powder coat finish in Black RAL9004, White RAL9016, and Grey Metallic RAL9007. Specify finish. Consult WE-EF color chart for other color options.

LISTINGS:

UL, c UL listed. Suitable for Wet locations.

International Protection Classification: IP65.

MOUNTING ACCESSORIES:

622-9321. Surface collar constructed of fabricated aluminum to match luminaire housing.

Supplied with (4) 1/2" knockout tabs for conduit entry. Suited for installations that require a surface mounted junction box & conduit. Surface j-box and conduit to be supplied by others. See details: www.we-ef.com



COLOR SUBMITTAL

**THE #1 CHOICE OF
PAINTING PROFESSIONALS®**

Job Name:

JOB 7025

Date:

April 8, 2015

Product:

ACRI-HUES 10

Painting Contractor:

ALD, INC.

Color:

MONTEREY CLIFFS ICI 463

General Contractor: **ALEXANDER BUILDING COMP**

Area / Sheen:

FLAT

Architect/Designer:

FORMAN ARCHITECTS

D.E. Contact:

BRANDON LOWE

This submittal is intended for color and sheen approval and may not have been produced from the actual product specified. Dunn-Edwards recommends following the procedures outlined in PDCA Std. P5-09 Sample Procedures.



463

DUNN-EDWARDS

SCOTTSDALE 065 4:16:20 PM 4/8/2015

IC 453

MONTEREY CLIFFS

ACHS10-0 ACRY-HUES EXT FLAT

1 GALLON:

BASE:U

Y NOTATION /48

JOB ID: 0

04-4Y32.75 14-3Y41.625 REV. DATE

08-46.25

4/8/2015

13-2Y23.5

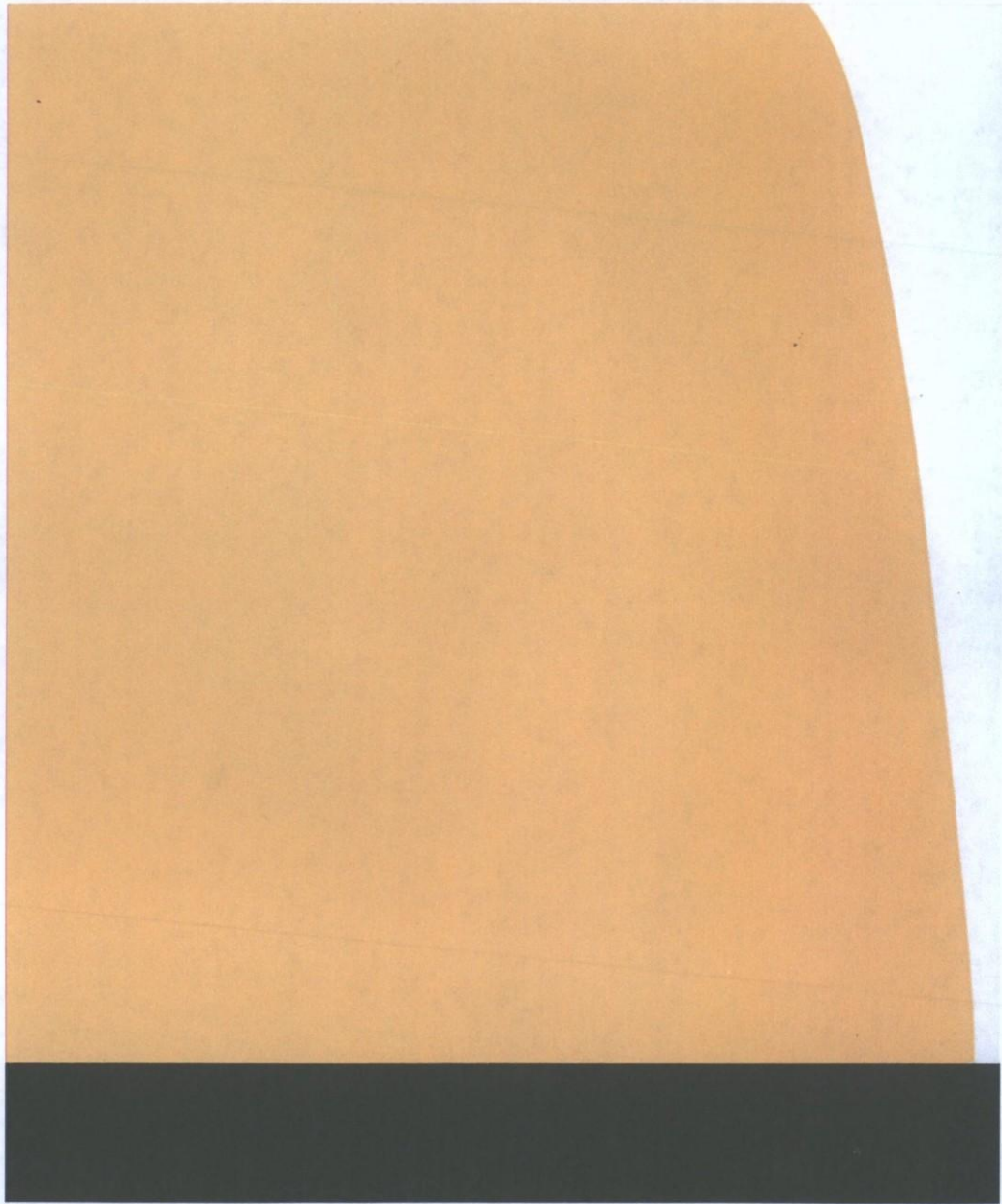
CUSTOM-TINTED PAINT - NOT RETURNABLE FOR
EXCHANGE OR REFUND.

COLOR MAY VARY SLIGHTLY FROM A COLOR CHIP
OR CONTAINER TO CONTAINER. CHECK FOR
CORRECT COLOR MATCH AND CONFIRM COLOR
BEFORE APPLICATION. DUNN-EDWARDS ACCEPTS NO
RESPONSIBILITY FOR ANY MIS-MATCHED PAINT
AFTER IT HAS BEEN APPLIED.

COLOR SUBMITTAL

OB 7025	Date:	April 8, 2015
.D, INC.	Product:	ACRI-HUES 10
BUILDING COMP	Color:	CORAL SPICE 383
ARCHITECTS	Area / Sheen:	FLAT
	D.E. Contact:	BRANDON LOWE

have been produced from the actual product specified. Dunn-Edwards recommends following the procedures outlined in PDCA Std. P5-09 Sample Procedures.



383

DUNN-EDWARDS

SCOTT RTC 65B 4:11:51 PM 4/8/2015

IC 383

CORAL SPICE

ACHS10-0 ACRI-HUES EXT FLAT

1 GALLON

BASE: M

Y NOTATION /48

JOB ID: 0

04-2Y6.75

REV. DATE

07-9.875

4/8/2015

18-25.625

(A), (

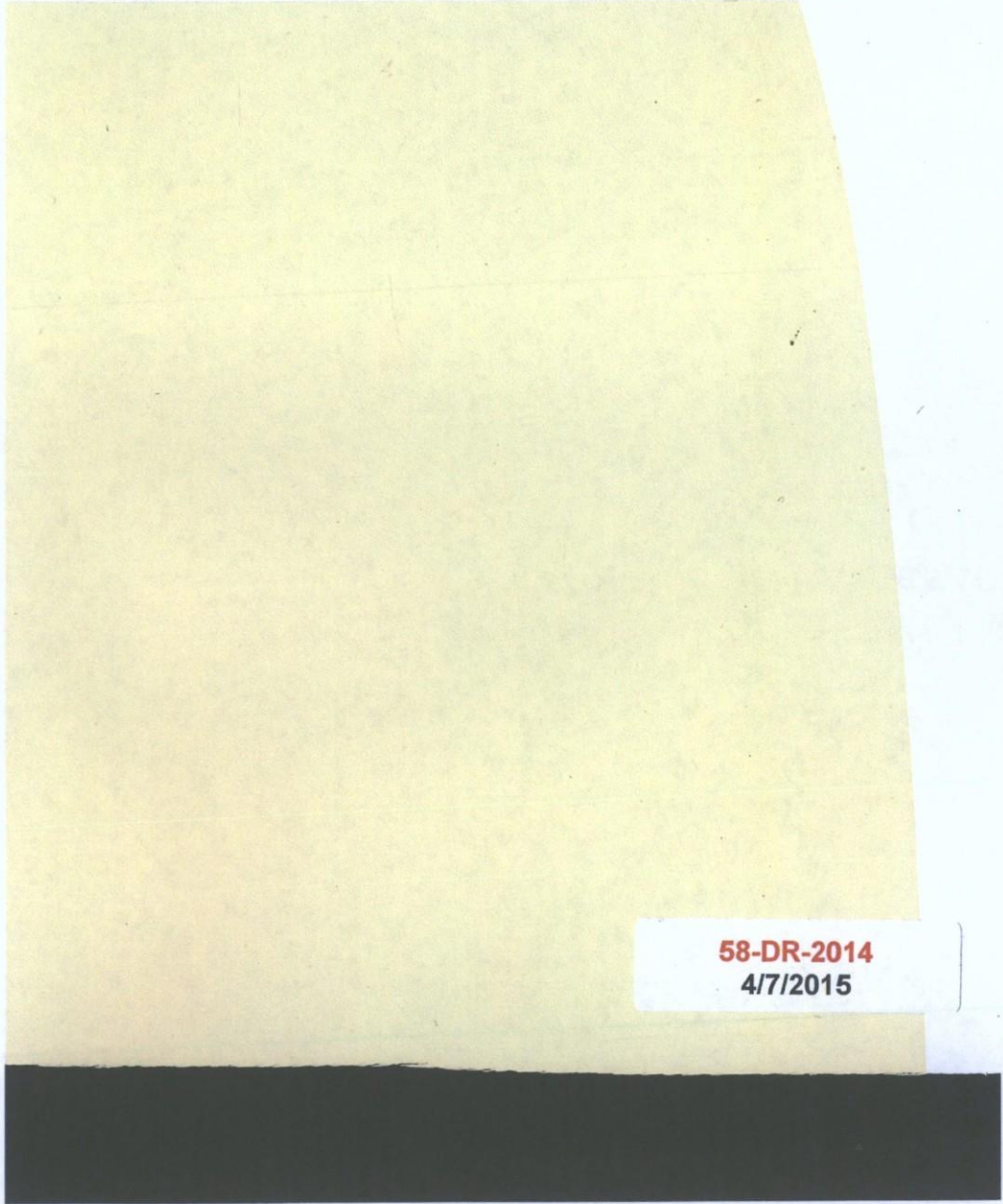
**CUSTOM-TINTED PAINT - NOT RETURNABLE FOR
EXCHANGE OR REFUND.**

COLOR MAY VARY SLIGHTLY FROM A COLOR CHIP
OR CONTAINER TO CONTAINER. CHECK FOR
CORRECT COLOR MATCH AND CONFIRM COLOR
BEFORE APPLICATION. DUNN-EDWARDS ACCEPTS NO
RESPONSIBILITY FOR ANY MIS-MATCHED PAINT
AFTER IT HAS BEEN APPLIED.

COLOR SUBMITTAL

Date: **November 14, 2014**
Product: **W6250 VERSA SATIN**
Color: **ICI 667 MACADAMIA WHITE**
Area / Sheen: **EGGSHELL**
D.E. Contact: **BRANDON LOWE**

1 produced from the actual product specified. Dunn-Edwards recommends following the procedures outlined in PDCA Std. P5-09 Sample Procedures.



58-DR-2014
4/7/2015

mw

DUNN-EDWARDS

SCOTTSDALE 065

6:09:24 AM

11/14/2014

MACADAMIA WHITE

667 ICI

W6250E VERSASATIN

1 GALLON

Y NOTATION /48

04-26.5

08-0.75

13-0.875

MORRISON PTG

CUSTOM-TINTED PAINT

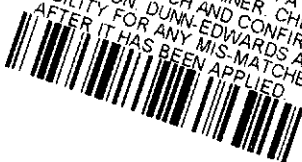
BASE: L

JOB ID: 897465

REV DATE

11/13/2014

EXCHANGE - NOT RETURNABLE FOR
COLOR MAY VARY SLIGHTLY FROM A COLOR CHIP
OR CONTAINER TO CONTAINER. CHECK FOR
CORRECT COLOR MATCH AND CONFIRM COLOR
BEFORE APPLICATION. DUNN-EDWARDS ACCEPTS NO
RESPONSIBILITY FOR ANY MIS-MATCHED PAINT
AFTER IT HAS BEEN APPLIED.





COLOR SUBMITTAL

**THE #1 CHOICE OF
PAINTING PROFESSIONALS®**
Job Name:

KOSLOW OLD TOWN

Painting Contractor:

ALD, INC.

General Contractor:

Architect/Designer:

Date:

November 14, 2014

Product:

W6250 VERSA SATIN

Color:

127 JUNIPER BERRY

Area / Sheen:

EGGSHELL

D.E. Contact:

BRANDON LOWE

This submittal is intended for color and sheen approval and may not have been produced from the actual product specified. Dunn-Edwards recommends following the procedures outlined in PDCA Std. P5-09 Sample Procedures.

58-DR-2014
4/7/2015

DUNN-EDWARDS

SCOTTSDALE 065 6:10:00 AM 11/14/2014

JUNIPER BERRY

GL 90YY 59/127

W6250E VERSASATIN

1 GALLON

BASE: L

Y NOTATION /48

JOB ID: 897477

01-1Y1

REV. DATE

04-6.6

11/14/2014

13-7.975

**CUSTOM-TINTED PAINT - NOT RETURNABLE FOR
EXCHANGE OR REFUND.
COLOR MAY VARY SLIGHTLY FROM A COLOR CHIP
OR CONTAINER TO CONTAINER. CHECK FOR
CORRECT COLOR MATCH AND CONFIRM COLOR
BEFORE APPLICATION. DUNN-EDWARDS ACCEPTS NO
RESPONSIBILITY FOR ANY MIS-MATCHED PAINT
AFTER IT HAS BEEN APPLIED.**





COLOR SUBMITTAL

**THE #1 CHOICE OF
PAINTING PROFESSIONALS®**

Job Name: **KOSLOW OLD TOWN**
Painting Contractor: **ALD, INC.**
General Contractor:
Architect/Designer:

Date: **November 14, 2014**
Product: **W6250 VERSA SATIN**
Color: **ICI 652 HAZELWOOD**
Area / Sheen: **EGGSHELL**
D.E. Contact: **BRANDON LOWE**

This submittal is intended for color and sheen approval and may not have been produced from the actual product specified. Dunn-Edwards recommends following the procedures outlined in PDCA Std. P5-09 Sample Procedures.

58-DR-2014
4/7/2015

DUNN-EDWARDS

SCOTTSDALE 065 6:08:54 AM 11/14/2014

HAZELWOOD

ICI 652

W6250E VERSASATIN

1 GALLON

BASE L

Y NOTATION /48

JOB ID: 897466

04-2Y32

REV. DATE

13-1.75

11/13/2014

MORRISON PTG

**CUSTOM-TINTED PAINT - NOT RETURNABLE FOR
EXCHANGE OR REFUND**

COLOR MAY VARY SLIGHTLY FROM A COLOR CHIP
OR CONTAINER TO CONTAINER. CHECK FOR
CORRECT COLOR MATCH AND CONFIRM COLOR
BEFORE APPLICATION. DUNN-EDWARDS ACCEPTS NO
RESPONSIBILITY FOR ANY MIS-MATCHED PAINT
AFTER IT HAS BEEN APPLIED.

